

# To get the most out of your valuable products

## Nutsch filters for kilolab and pilot plant



- Büchi quality
- modular and compact
- safe and reliable
- ATEX / CE / cGMP
- «büchiflex» connections
- corrosion resistant
- easy handling
- turn-key
- extensive accessories



# Nutsch filter Nutsche Filter

## Features

- -1.0 to +1.0 bar (depending on volume)
- -60°C (-90°C) to +150°C
- ATEX / CE / cGMP
- Dry running mechanical seal
- FDA conform, highly corrosion resistant materials: Glass / PTFE / PFA
- Lift for easy cleaning and filter change
- Optional glass overhead
- Compact design
- CIP capable

## System setup

- Glass filter vessel 10 – 300 l
- PFA-coated cover plate
- PTFE filter plate
- Stainless steel scaffolding
- Custom glass overhead, e.g. for drying (optional)

## Applications

- Filtration
- Crystallization
- Drying
- Solidphase synthesis
- Chromatography
- Ion exchange



2-step lowering device



Swing-out mechanism for removal of filter cake



Cover plate with accessories



10 Litre



30 Litre



50 Litre



160 Litre  
Pneumatic lifting / lowering of stirrer, ATEX

### Filter change and cleaning / various mesh sizes



Filter plate with lowering device for easy filter change



Height adjustable stirrer for optimal loosening, pressing and flattening of filter cake

# Options



Motor agitator (ATEX)



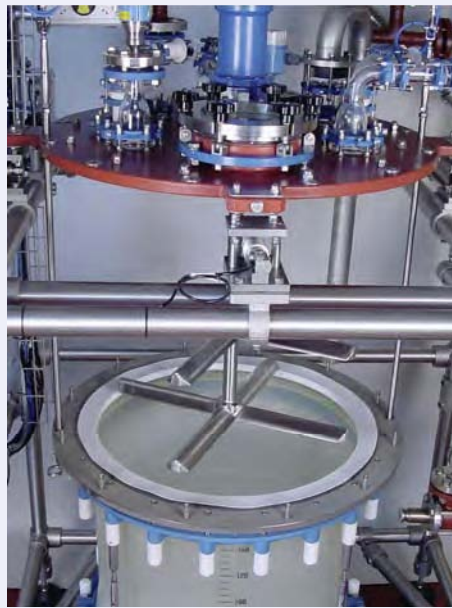
Various stirrer shapes and materials



Heating / Cooling jacket



5l miniSolidphase reactor / filter, with heating jacket and anchor stirrer in glass / PTFE



150 l solidphase reactor with filter, stirrer and load cells



High containment filter with glove nozzle, for inert conditions in cGMP facilities



**KEN KIMBLE (Reactor Vessels) Ltd**  
 Unit 85, Thomas Way, Lakesview International Business Park  
 Hersden, Canterbury, Kent. CT3 4NH  
 Tel: 01227 710274 Fax: 01227 258840  
 Email: general@kenkimble.co.uk Web: www.kenkimble.com

 **büchiglasuster**  
 Pilot Plant and Reactor Systems  
 switzerland