



NORBAR TORQUE WRENCH



DIGITAL CATALOGUE





CONTENTS

- Introduction
- Torque Screwdrivers
- Torque Wrenches
- Electronic Torque Wrenches
- Service & Spares



ISO 9001:2015



ENMS 621748



A GLOBAL, LOCAL BUSINESS

From our humble beginnings over 75 years ago, in a small workshop in North Bar, Banbury, to our latest purpose built factory on Wildmere Road, Norbar has pioneered many of today's solutions for torque control. Our offices around the world are excellent at taking core Banbury product and developing it for your use in your application. From manual torque wrenches to sophisticated control systems we are still dedicated to being the best at what we do. Norbar is now a member of the Snap-on Incorporated family of companies and is proud to be part of a business which has beliefs, values and a vision closely aligned with those that Norbar was founded on. We still strive to be "The best torque tool company in the world. Respected, profitable and a great place to work."





GLOBAL SERVICE



+ 44 (0)1295 753600
sales@norbar.com



+ 1 866 667 2272
inquiry@norbar.us



+ 1 281 449 6466
esales@fastorq.com



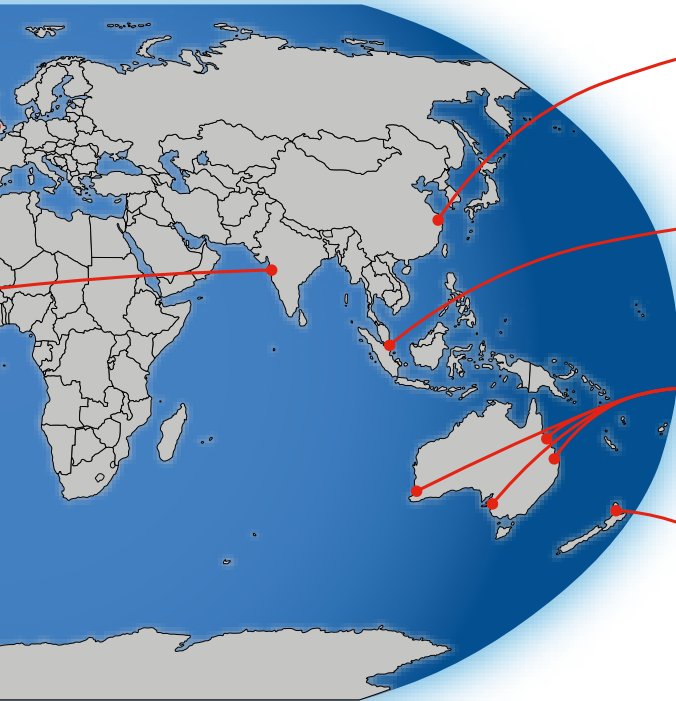
+ 91 22 2778 8480
enquiry@norbar.in



We are the world's leading specialist in torque control and we production of torque tightening and measuring equipment.

Our customers include manufacturers and engineering service mining and sub-sea.

There are sales and service branches as shown above. In addition more than 60 countries around the world.



China



+ 86 21 6145 0368
sales@norbar.com.cn



Singapore



+ 65 6841 1371
enquiries@norbar.sg



Australia



+ 61 (0)8 8292 9777
norbar@norbar.com.au



New Zealand



+ 64 (0)9 579 8653
norbarnz@norbar.com.au



are engaged solely in the design, development and

s in such diverse sectors as aerospace, energy, oil and gas,

ion, we have distributors of our torque control products in



FASTORQ - THE SPEED OF INNOVATION

We are ex
now a par
a global pr
a range of
range. FAS
design, ma
and specia
challenges
engineers
knowledge



cited to inform you that the well-regarded brand FASTORQ is
t of the Norbar family. Based in New Caney, Texas, FASTORQ are
rovider of precision bolt loading and removal solutions and offer
products well suited to complement Norbar's existing product
TORQ are a pioneer in the hydraulic tools industry and today
anufacture and sell a revolutionary line of bolting solutions
alty bolting lubricants delivering timely resolutions to bolting
s of all sizes on land or sea. FASTORQ's highly skilled team of
and bolting technicians have over 100 combined years of bolting
e.

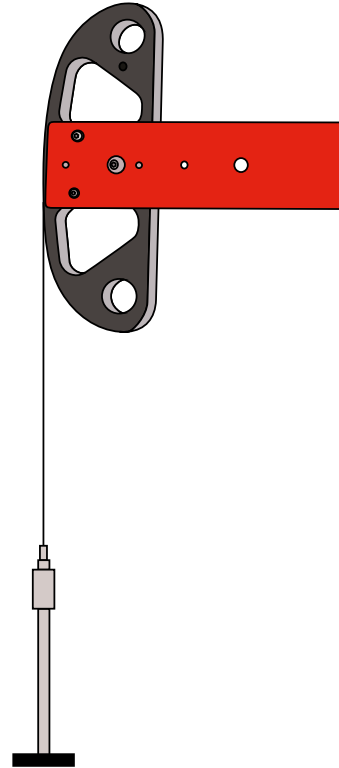


WHAT IS TORQUE

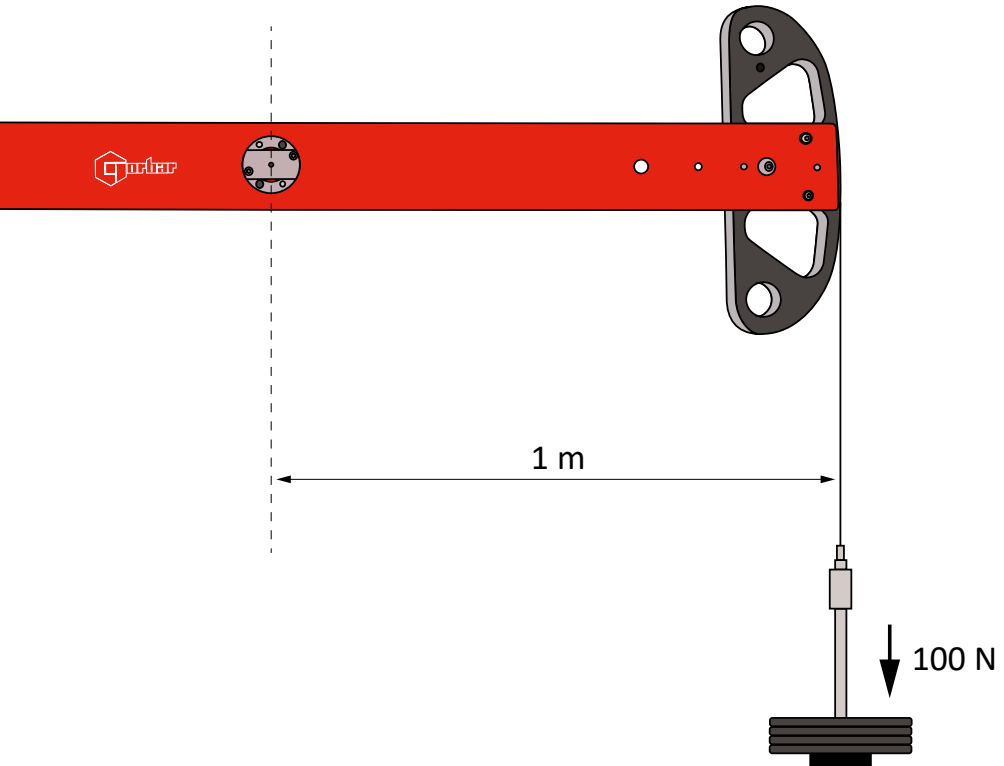
Torque is any force or system of forces that tends to cause rotation about an axis.

Imagine someone tightening a bolt using a socket attached to a meter (m) long bar. If they apply 10 kg of force (kgf) perpendicular to the bar they will produce a torque of 10 kgf·m at the axis (the centre of the bolt).

However, under the S.I. system of measurement, force is expressed in Newtons (N) rather than kgf. The conversion between kgf and N is $\times 9.807$ so the person is applying 98.07 N·m of torque.



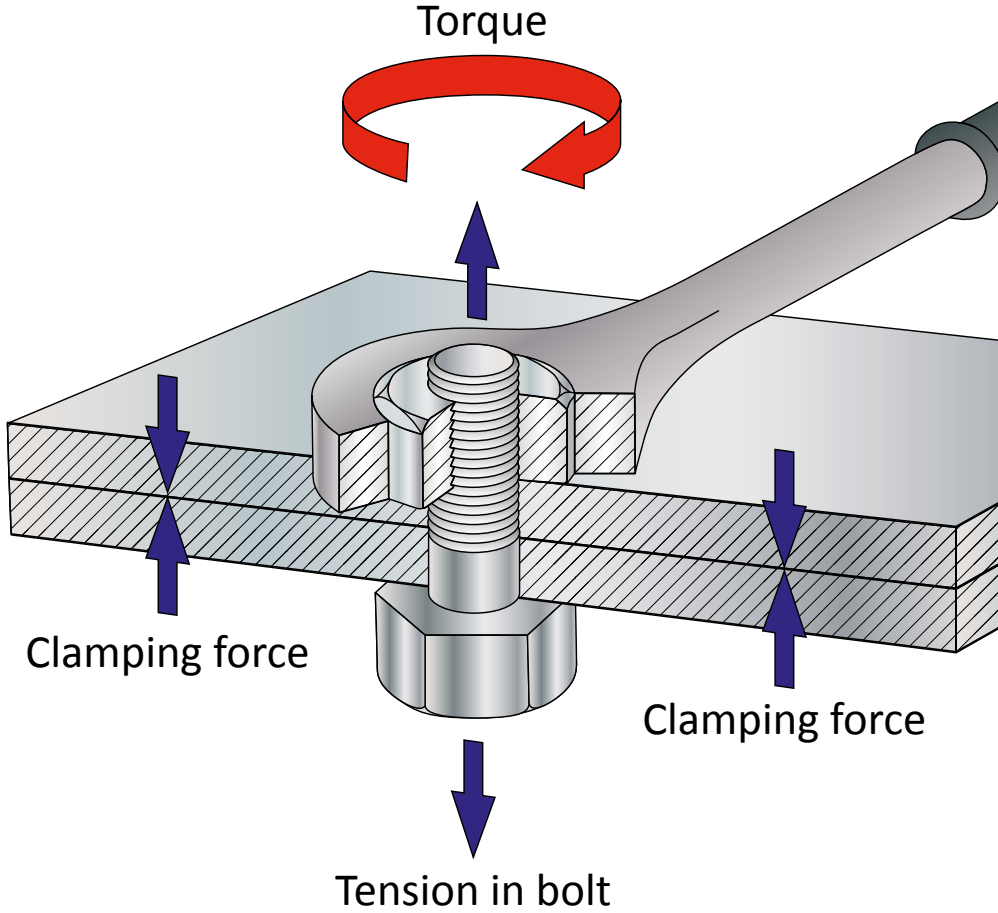
The Importance

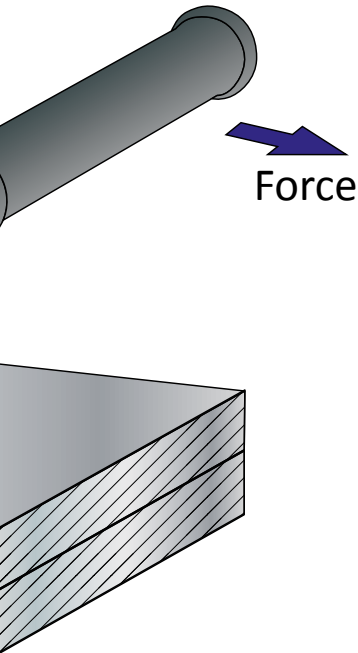


e of Torque Control



BOLT TENSION





When an assembly is clamped by tightening a nut and bolt, the induced tension causes the bolt to stretch. An equal force acts to compress the parts which are thus clamped.

The proof load of a bolt, normally established by test, is the load which just starts to induce permanent set – also known as the yield point. Typically bolts are tightened to between 75% and 90% of yield.



FRICION IN THE BOLTED JOINT

When a threaded fastener is tightened, the induced tension is distributed between the head of the bolt and in the threads. It is generally accepted that the applied torque is expended in overcoming friction between the abutting surface and another 30% to 40% is lost to friction in the threads. Only 30% of the applied torque results in useful work to tension the bolt.

results in friction under
d that as much as 50% of
n the bolt head and the
he threads. As little as 10%
t.



More info



TIGHTENING TO YIELD

Bolts tightened to yield provide consistently higher preloads from reduces the fatigue loading to which the bolt is subjected under connecting rods.

In theory, a bolt tightened to its yield point will provide the strongest physical limitations of the bolt material and manufacturing process.

The downside of this method is the cost of the sophisticated equipment.

Calculated Maximum Torque		Calculated Maximum Load	
N.m.: 0.05		kN: 0.15	
lbf. ft.: 0.04		lbf: 34.7	

Bolt Properties	
Bolt Diameter	1.6
Yield Stress	180
Pitch	0.35
Pitch Diameter	1.373
Root Diameter	1.171
Hex A/f Diameter	3.2

These torque and load values are for guidance only! Always check with the manufacturer.



Torque Ten

smaller diameter bolts. The reduced fastener stiffness
repeated external load reversals, e.g. cylinder heads and

longest and most fatigue-resistant joint possible, within the
stress.

equipment necessary to determine when the bolt goes into yield.

The screenshot shows the Norbar Torque Tools Torque Conversion Calculator interface. It features a sidebar on the left with input fields for various units (mm, N/mm², mm, mm, mm, mm). The main area contains the Norbar logo and two sections: 'Standard Parameters' and 'Friction Coefficients'. The 'Standard Parameters' section includes dropdown menus for Bolt Type (Metric Coarse), Bolt Dia. (1.6), and Grade (3.6). The 'Friction Coefficients' section includes input fields for Thread (0.14) and Head (0.14), along with a 'Defaults' button. A footer at the bottom of the interface reads 'with equipment/bolt manufacturer'.

Torque Conversion Calculator





RECOMMENDED MAXIMUM TORQUE VALUES

The information supplied here is intended to be an acceptable guide for normal conditions. For critical applications, further information and research will be necessary. The following basic assumptions have been made:

- a. Bolts are new, standard finish, uncoated and not lubricated (other than the normal protective oil film)
- b. The load will be 90% of the bolt yield strength
- c. The coefficient of friction is 0.14
- d. The final tightening sequence is achieved smoothly and slowly

If lubrication is to be applied to the nut/bolt, multiply the recommended torque by the appropriate factor. Alternatively, use the Torque/Tension Calculator on the Norbar website which enables fastener and friction conditions to be modified with ease.

 M	BOLT GRADE									 mm
	3.6	4.6	5.6	5.8	6.8	8.8	9.8	10.9	12.9	
	Torque in N·m									
M 1.6	0.05	0.07	0.09	0.11	0.14	0.18	0.21	0.26	0.31	3.2
M 2	0.11	0.14	0.18	0.24	0.28	0.38	0.42	0.53	0.63	4
M 2.5	0.22	0.29	0.36	0.48	0.58	0.78	0.87	1.09	1.31	5
M 3	0.38	0.51	0.63	0.84	1.01	1.35	1.52	1.9	2.27	5.5
M 4	0.71	0.95	1.19	1.59	1.91	2.54	2.86	3.57	4.29	7
M 5	1.71	2.28	2.85	3.8	4.56	6.09	6.85	8.56	10.3	8
M 6	2.94	3.92	4.91	6.54	7.85	10.5	11.8	14.7	17.7	10
M 8	7.11	9.48	11.9	15.8	19	25.3	28.4	35.5	42.7	13
M 10	14.3	19.1	23.8	31.8	38.1	50.8	57.2	71.5	85.8	17
M 12	24.4	32.6	40.7	54.3	65.1	86.9	97.9	122	147	19
M 14	39	52	65	86.6	104	139	156	195	234	22
M 16	59.9	79.9	99.8	133	160	213	240	299	359	24
M 18	82.5	110	138	183	220	293	330	413	495	27
M 20	117	156	195	260	312	416	468	585	702	30
M 22	158	211	264	352	422	563	634	792	950	32
M 24	202	270	337	449	539	719	809	1,011	1,213	36
M 27	298	398	497	663	795	1,060	1,193	1,491	1,789	41
M 30	405	540	675	900	1,080	1,440	1,620	2,025	2,430	46
M 33	550	734	917	1,223	1,467	1,956	2,201	2,751	3,301	50
M 36	708	944	1,180	1,573	1,888	2,517	2,832	3,540	4,248	55
M 39	919	1,226	1,532	2,043	2,452	3,269	3,678	4,597	5,517	60
M 42	1,139	1,518	1,898	2,530	3,036	4,049	4,555	5,693	6,832	65
M 45	1,425	1,900	2,375	3,167	3,800	5,067	5,701	7,126	8,551	70
M 48	1,716	2,288	2,860	3,813	4,576	6,101	6,864	8,580	10,296	75
M 52	2,210	2,947	3,684	4,912	5,895	7,859	8,842	11,052	13,263	80
M 56	2,737	3,650	4,562	6,083	7,300	9,733	10,950	13,687	16,425	85
M 60	3,404	4,538	5,673	7,564	9,076	12,102	13,614	17,018	20,422	90
M 64	4,100	5,466	6,833	9,110	10,932	14,576	16,398	20,498	24,597	95
M 68	4,963	6,617	8,271	11,029	13,234	17,646	19,851	24,814	29,777	100



TORQUE CONVERSION FACTORS

Units to be converted	S.I. Units		Imperial Units			Metric
	cN·m	N·m	ozf·in	lbf·in	lbf·ft	kgf·cm
1 cN·m =	1	0.01	1.416	0.088	0.007	0.102
1 N·m =	100	1	141.6	8.851	0.738	10.20
1 ozf·in =	0.706	0.007	1	0.0625	0.005	0.072
1 lbf·in =	11.3	0.113	16	1	0.083	1.152
1 lbf·ft =	135.6	1.356	192	12	1	13.83
1 kgf·cm =	9.807	0.098	13.89	0.868	0.072	1
1 kgf·m =	980.7	9.807	1389	86.8	7.233	100

Formula for Calculating the Effect of Torque Wrench Extensions

$$M1 = M2 \times L1/L2$$

Where L1 is the normal length and L2 is the extended length, M1 is the set torque and M2 the actual torque applied to the nut.

Example

The required torque on the fastener is 130 N·m (M2) but what do you set on the torque wrench scale?

L1 = 500 L2 = 650
(units of length not important, this is ratio)

$$M1 = 130 \times 500/650$$

$$M1 = 100$$

Units
kgf·m
0.001
0.102
0.0007
0.0115
0.138
0.01

FORCE
 lbf x 4.45 = N
 N x 0.225 = lbf

FLOW
 l/s x 2.119 = cu·ft/min
 cu·ft/min x 0.472 = l/s

PRESSURE
 lbf/in² x 0.069 = bar
 bar x 14.504 = lbf/in²

POWER
 hp x 0.746 = kW
 $kW = \frac{N \cdot m \times rev/min}{9,546}$

Formulae

Accepted formulae relating torque and tension, based on many tests are:-

For Imperial Sizes

$M = \frac{P \times D}{60}$
 M = torque lbf·ft
 P = bolt tension lbf
 D = bolt diameter (ins)

For Metric Sizes

$M = \frac{P \times D}{5000}$
 M = torque N·m
 P = bolt tension Newtons
 D = bolt diameter (mm)

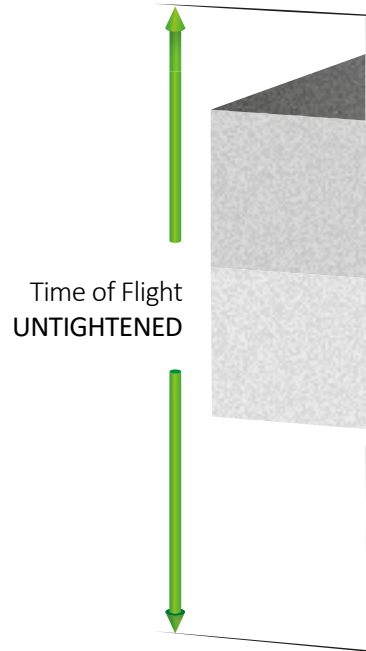
These formulae may be used for bolts outside the range of the tables.

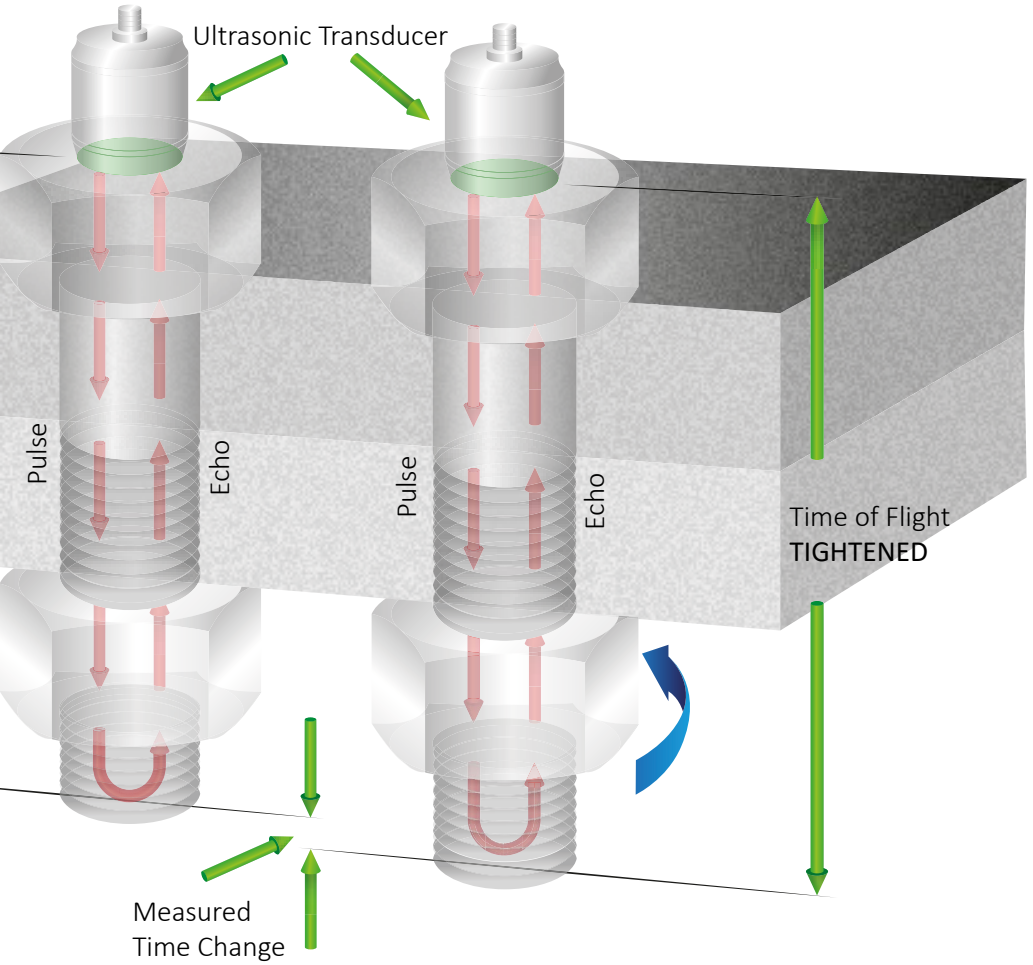


WHEN TORQUE DOESN'T EQUAL TIGHT

As we have established, it is the tension in a fastener rather than the torque that is the critical factor. Torque is an indirect means of establishing tension and in a correctly engineered joint and with a controlled tightening process, it is a satisfactory method under the majority of circumstances.

However, in joints that are highly critical due to safety or the cost and implications of machine down-time, a more direct means of establishing tension is needed. Various methods exist including several types of load indicating bolts or washers. However, one of the most versatile methods is to measure the extension of the bolt due to the tightening process using ultrasound.







TTS TORQUE SCREWDRIVERS

Versatile, accurate and easy torquing for smaller fasteners and restricted spaces

Key Features





ADJUSTABLE N·m

13850	TTs1.5, ¼", 0.3 - 1.5 N·m
13851	TTs3.0, ¼", 0.6 - 3 N·m
13852	TTs6.0, ¼", 1.2 - 6 N·m

ADJUSTABLE lbf·in

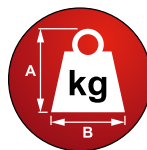
13853	TTs13, ¼", 2.5 - 13 lbf·in
13854	TTs26, ¼", 5 - 26 lbf·in
13855	TTs53, ¼", 10 - 53 lbf·in

PRODUCTION 'P' TYPE

13856	TTs1.5, ¼", 0.3 - 1.5 N·m, 2.5 - 13 lbf·in
13857	TTs3.0, ¼", 0.6 - 3 N·m, 5 - 26 lbf·in
13858	TTs6.0, ¼", 1.2 - 6 N·m, 10 - 53 lbf·in
SQ2222	Pre-set, etch and certify (Allow 3 days delivery for this service)

ADJUSTABLE N·m KIT

13700	TTs0.3 - 1.5 N·m Kit with 12 piece bit set and case
13701	TTs0.6 - 3 N·m Kit with 12 piece bit set and case
13702	TTs1.2 - 6 N·m Kit with 12 piece bit set and case
28937	12 Piece ¼", Hex bit set







CONTENTS

- TT Torque Wrenches
- TTi Non-Magnetic Torque Wrenches
- NorTorque®
- NorTorque® Tethered Torque Wrenches
- Slimline™ Torque Wrenches
- Professional Torque Wrenches Model 5
- Professional Torque Wrenches
- Professional ‘P’ Type Torque Wrenches
- Professional Torque Wrenches NLD Series
- Industrial Torque Wrenches- New Generation
- Industrial Torque Wrench- Bi-Square
- Electrode Wrenches
- Open End Fittings for 16 mm Torque Handles
- Ring End Fittings for 16 mm Torque Handles
- Flare End Fittings for 16 mm Torque Handles
- Spigot Accessories
- Manufactured to Order Large End Fittings



TORQUE WRENCHES

Norbar Torque Tools manufacture an extensive range of high quality torque wrenches to cover torque values from 1 N·m to 2000 N·m. They are designed and manufactured to meet international standards for accuracy.

In addition to the normal 'adjustable' torque wrenches, Norbar offer Production 'P' Type versions which can be pre-set and dedicated to a particular application. This setting system is designed to discourage unauthorised alteration.

All Norbar torque wrenches are offered as standard with a quality ratchet. For applications where interchangeable end fittings are required, 'Torque Handles' are also available in various models up to 650 N·m.



ISO 6789:2017

TORQUE WRENCHES





TT TORQUE WRENCHES



For no-nonsense torquing
- comfortable, accurate and
easy to use



Key Features

TORQUE WRENCHES





TT TORQUE WRENCHES

RATCHET ADJUSTABLE - DUAL SCALE

13830	TTi20, ¼", 4 - 20 N·m, 35 - 180 lbf·in
13831	TTi20, ⅜", 4 - 20 N·m, 35 - 180 lbf·in
13841	TTi50, ⅜", 10 - 50 N·m, 8 - 35 lbf·ft
13842	TTi50, ½", 10 - 50 N·m, 8 - 35 lbf·ft

RATCHET ADJUSTABLE

13832	TTi20, ¼", 4 - 20
13833	TTi20, ⅜", 4 - 20
13843	TTi50, ⅜", 10 - 5
13844	TTi50, ½", 10 - 5





- N·m ONLY

- 0 N·m
- 0 N·m
- 50 N·m
- 50 N·m

FEMALE TORQUE HANDLE ADJUSTABLE

13839	TTfth 20, 9 x 12 mm, 4 - 20 N·m, 35 - 180 lbf·in
13847	TTfth 50, 9 x 12 mm, 10 - 50 N·m, 8 - 35 lbf·ft
13840	TTfth 20, 9 x 12 mm, 4 - 20 N·m (N·m ONLY)
13848	TTfth 50, 9 x 12 mm, 10 - 50 N·m (N·m ONLY)



TTi Reversible Ratchet



TTfth Torque Handle





TTI NON-MAGNETIC TORQUE WRENCHES



Carefully selected and tested materials replace the ferrous components present in standard torque wrenches, thereby giving an extremely low magnetic footprint. Being based on the TT range of torque wrenches means that they also retain the high standards of Norbar's other torque wrenches. Perfect for MRI scanner applications.



Key Features



ADJUSTABLE - DUAL

13900	TTi20, 3/8" N
13901	TTi20, 1/2" N
13902	TTi50, 3/8" N
13903	TTi50, 1/2" N

TORQUE WRENCHES



SCALE

- Non-Mag, 4 - 20 N·m, 35 - 180 lbf·in
- Non-Mag, 4 - 20 N·m, 35 - 180 lbf·in
- Non-Mag, 10 - 50 N·m, 8 - 35 lbf·ft
- Non-Mag, 10 - 50 N·m, 8 - 35 lbf·ft

ADJUSTABLE - N·m ONLY

- | | |
|--------|----------------------------------|
| 130503 | TTi20, 3/8" Non-Mag, 3 - 20 N·m |
| 130504 | TTi20, 1/2" Non-Mag, 3 - 20 N·m |
| 13906 | TTi50, 3/8" Non-Mag, 10 - 50 N·m |
| 13907 | TTi50, 1/2" Non-Mag, 10 - 50 N·m |



NORTORQUE®



enquiry@norbar.com | www.norbar.com



The NorTorque® utilises Norbar's proven mechanism and internal components and incorporates them into a purposeful and attractive torque wrench that will delight a wide range of users from professional mechanics to hobby enthusiasts



Key Features



NORTORQUE®



enquiry@norbar.com | www.norbar.com



RATCHET ADJUSTABLE - DUAL SCALE

130101 ⁺	Model 60, $\frac{3}{8}$ " , 12 - 60 N·m, 10 - 45 lbf·ft
130103 ⁻	Model 100, $\frac{1}{2}$ " , 20 - 100 N·m, 20 - 80 lbf·ft
130104	Model 200, $\frac{1}{2}$ " , 40 - 200 N·m, 30 - 150 lbf·ft
130105	Model 300, $\frac{1}{2}$ " , 60 - 300 N·m, 45 - 220 lbf·ft
130106	Model 340, $\frac{1}{2}$ " , 60 - 340 N·m, 45 - 250 lbf·ft

RATCHET ADJUSTABLE - N·m ONLY

130111 ⁺	Model 60, $\frac{3}{8}$ " , 12 - 60 N·m
130113 ⁻	Model 100, $\frac{1}{2}$ " , 20 - 100 N·m
130114	Model 200, $\frac{1}{2}$ " , 40 - 200 N·m
130115	Model 300, $\frac{1}{2}$ " , 60 - 300 N·m
130116	Model 340, $\frac{1}{2}$ " , 60 - 340 N·m

⁺ Supplied with $\frac{1}{2}$ " sq. dr. adaptor

⁻ Supplied with $\frac{3}{8}$ " sq. dr. adaptor



NORTORQUE®



16 mm Spigot End



TORQUE HANDLE ADJUSTABLE 16 mm SPIGOT - DUAL SCALE

130141	Model 60, 16 mm spigot, 12 - 60 N·m, 10 - 45 lbf·ft
130142	Model 100, 16 mm spigot, 20 - 100 N·m, 20 - 80 lbf·ft
130143	Model 200, 16 mm spigot, 40 - 200 N·m, 30 - 150 lbf·ft
130144	Model 300, 16 mm spigot, 60 - 300 N·m, 45 - 220 lbf·ft

TORQUE HANDLE ADJUSTABLE 16 mm SPIGOT - N·m ONLY

130161	Model 60, 16 mm spigot, 12 - 60 N·m
130162	Model 100, 16 mm spigot, 20 - 100 N·m
130163	Model 200, 16 mm spigot, 40 - 200 N·m
130164	Model 300, 16 mm spigot, 60 - 300 N·m





Female Torque Handle



FEMALE TORQUE HANDLE ADJUSTABLE - DUAL SCALE

130121	Model 60, 9 x 12 mm, 12 - 60 N·m, 10 - 45 lbf·ft
130123	Model 100, 9 x 12 mm, 20 - 100 N·m, 20 - 80 lbf·ft
130125	Model 200, 9 x 12 mm, 40 - 200 N·m, 30 - 150 lbf·ft
130126	Model 200, 14 x 18 mm, 40 - 200 N·m, 30 - 150 lbf·ft
130127	Model 300, 14 x 18 mm, 60 - 300 N·m, 45 - 220 lbf·ft
130128	Model 340, 14 x 18 mm, 60 - 340 N·m, 45 - 250 lbf·ft

FEMALE TORQUE HANDLE ADJUSTABLE - N·m ONLY

130131	Model 60, 9 x 12 mm, 12 - 60 N·m
130133	Model 100, 9 x 12 mm, 20 - 100 N·m
130135	Model 200, 9 x 12 mm, 40 - 200 N·m
130136	Model 200, 14 x 18 mm, 40 - 200 N·m
130137	Model 300, 14 x 18 mm, 60 - 300 N·m
130138	Model 340, 14 x 18 mm, 60 - 340 N·m



NORTORQUE® TETHERED TORQUE WRENCHES





Features inbuilt tethering point to secure the tool for safe work at height and double-sided locking plunger square.



Tethering Point



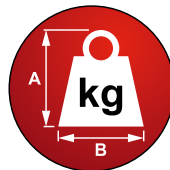
Double-Sided Locking Plunger Square



Key Features

RATCHET ADJUSTABLE - DUAL SCALE

130178	Model 100, ½", 20 - 100 N·m, 20 - 80 lbf·ft
130179	Model 200, ½", 40 - 200 N·m, 30 - 150 lbf·ft
130180	Model 300, ½", 60 - 300 N·m, 45 - 220 lbf·ft





SLIMLINE™ TORQUE WRENCHES



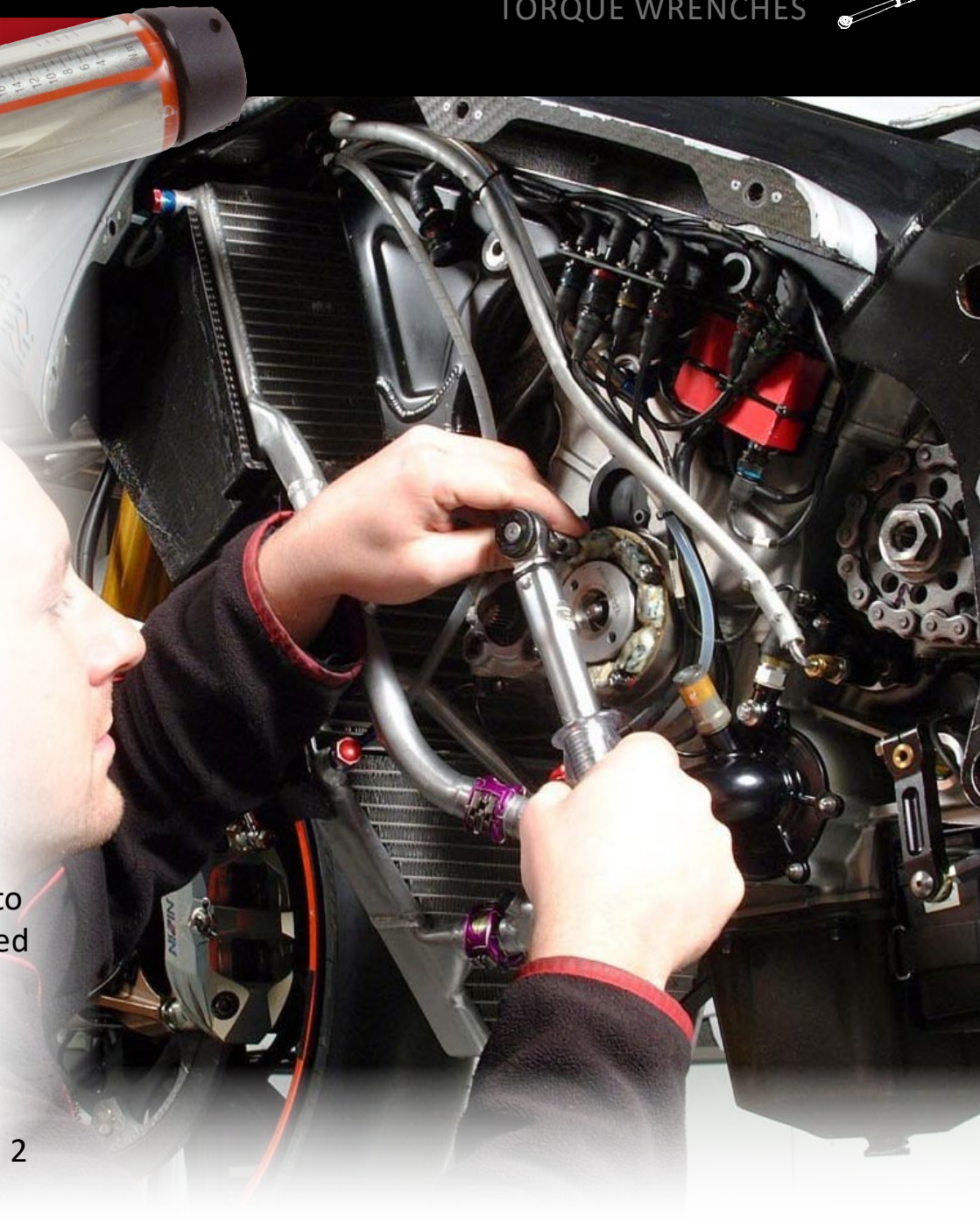
The accuracy of the Norbar SL0 torque wrenches exceed all international standards and can be supplied with a fixed head, 16 mm spigot or 9 x 12 mm Female end.

Key Features



Production 'P' type versions are designed to discourage unauthorised alteration. They have no scale and so must be set against a torque measuring device such as Norbar's TruCheck™

TORQUE WRENCHES

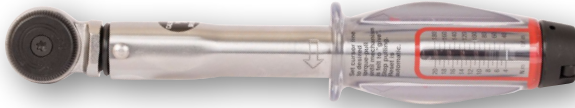


co
ed

2



SLIMLINE™ TORQUE WRENCHES



ADJUSTABLE RATCHET - DUAL SCALE

11123 SLO, 1/4", 4 - 20 N·m, 40 - 180 lbf·in

11087 SLO, 3/8", 4 - 20 N·m, 40 - 180 lbf·in



PRODUCTION 'P' TYPE

(Must be set using a Torque Tester)

11085 SLO, 1/4", 4 - 20 N·m, 40 - 180 lbf·in

11086 SLO, 3/8", 4 - 20 N·m, 40 - 180 lbf·in

SQ2222 Pre-set, etch and certify
(Allow 3 days delivery for this service)



ADJUSTABLE - FIXED HEAD- DUAL SCALE

11125 SLO, 3/8" Fixed Head, 4 - 20 N·m, 40 - 180 lbf·in



PRODUCTION 'P' TYPE (Must be set using a Torque Tester)

11089 SLO, 3/8" Fixed Head, 4 - 20 N·m, 40 - 180 lbf·in

SQ2222 Pre-set, etch and certify
(Allow 3 days delivery for this service)



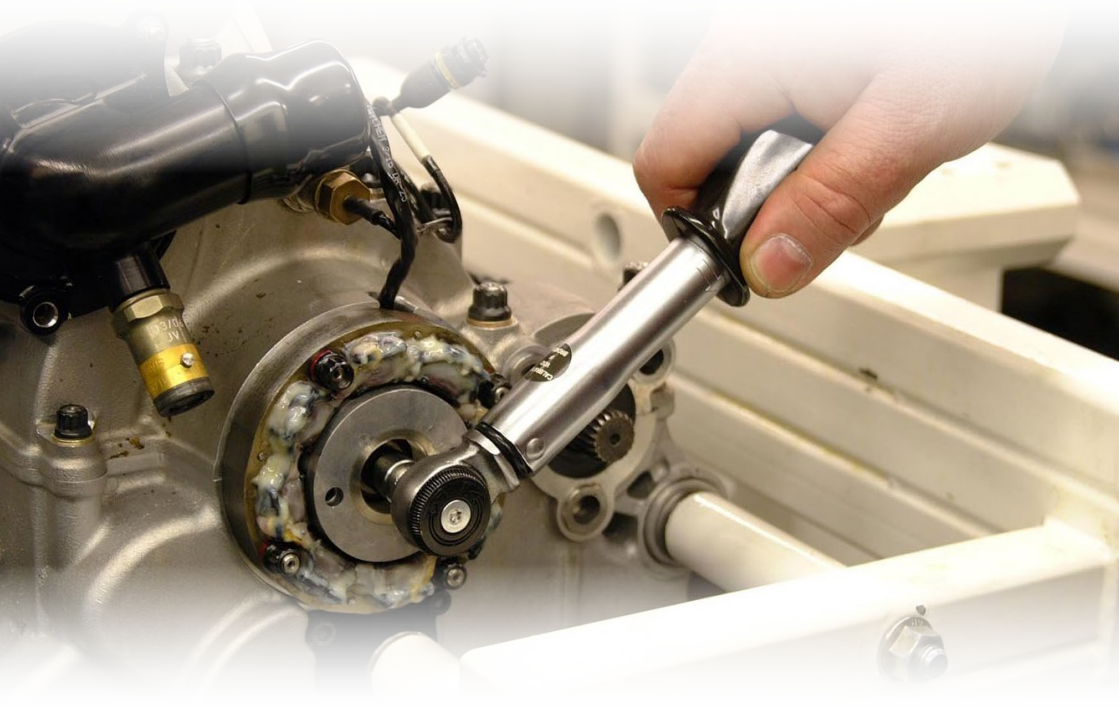
TORQUE HANDLE ADJUSTABLE - DUAL SCALE

11126	SLO 16 mm spigot, 4 - 20 N·m, 40 - 180 lbf·in
11122	SLO 9 x 12 mm female, 4 - 20 N·m, 40 - 180 lbf·in



PRODUCTION 'P' TYPE (Must be set using a Torque Tester)

11090	SLO, 16 mm spigot, 4 - 20 N·m, 40 - 180 lbf·in
11088	SLO, 9 x 12 mm female, 4 - 20 N·m, 40 - 180 lbf·in
SQ2222	Pre-set, etch and certify (Allow 3 days delivery for this service)





PROFESSIONAL TORQUE WRENCHES MODEL 5





The Model 5 is a unique torque wrench that offers the convenience of interchangeable $\frac{1}{4}$ " hexagon bits. (ISO 1173:2001 Form C drive bits).

Key Features

ADJUSTABLE

13001	Pro 5, $\frac{1}{4}$ " female hex, 1 - 5 N·m
13002	Pro 5, $\frac{1}{4}$ " female hex, 10 - 50 lbf·in
13003	Pro 5, $\frac{1}{4}$ " female hex, 10 - 50 kgf·cm



PRODUCTION 'P' TYPE

13004	Pro 5, $\frac{1}{4}$ " female hex, 1 - 5 N·m
13005	Pro 5, $\frac{1}{4}$ " female hex, 10 - 50 lbf·in
13006	Pro 5, $\frac{1}{4}$ " female hex, 10 - 50 kgf·cm



MODEL 5 SPARES

28900	$\frac{1}{4}$ " Hex to $\frac{1}{4}$ " male square drive
-------	--



PROFESSIONAL TORQUE WRENCHES

Since its original, award winning launch in 1984, Norbar's Professional torque wrench range has become one of the most popular wrench ranges available worldwide. In this re-engineered version, the core principles of accuracy, durability and comfort are carried over but almost every component part is new and improved.



Key Features



Timestrip®



Professional Scale



Unlocked



Compared with other torque wrenches

TORQUE WRENCHES



Locked



PROFESSIONAL TORQUE WRENCHES

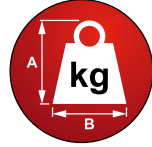




Industrial Ratchet



*'Mushroom'
Square Drive*



INDUSTRIAL RATCHET - DUAL SCALE

15002 ⁺	Pro 50, $\frac{3}{8}$ " , 10 - 50 N·m, 7.5 - 37.5 lbf·ft
15003 ⁻	Pro 100, $\frac{1}{2}$ " , 20 - 100 N·m, 15 - 75 lbf·ft
15004	Pro 200, $\frac{1}{2}$ " , 40 - 200 N·m, 30 - 150 lbf·ft
15005	Pro 300, $\frac{1}{2}$ " , 60 - 300 N·m, 44 - 222 lbf·ft
15006	Pro 340, $\frac{1}{2}$ " , 60 - 340 N·m, 44 - 250 lbf·ft
15007 [*]	Pro 400, $\frac{3}{4}$ " , 80 - 400 N·m, 60 - 300 lbf·ft

INDUSTRIAL RATCHET - N·m ONLY

15042 ⁺	Pro 50, $\frac{3}{8}$ " , 10 - 50 N·m
15043 ⁻	Pro 100, $\frac{1}{2}$ " , 20 - 100 N·m
15044	Pro 200, $\frac{1}{2}$ " , 40 - 200 N·m
15045	Pro 300, $\frac{1}{2}$ " , 60 - 300 N·m
15046	Pro 340, $\frac{1}{2}$ " , 60 - 340 N·m
15047 [*]	Pro 400, $\frac{3}{4}$ " , 80 - 400 N·m

INDUSTRIAL RATCHET - lbf·ft ONLY

15172 ⁺	Pro 50, $\frac{3}{8}$ " , 7.5 - 37.5 lbf·ft
15173 ⁻	Pro 100, $\frac{1}{2}$ " , 15 - 75 lbf·ft
15174	Pro 200, $\frac{1}{2}$ " , 30 - 150 lbf·ft
15175	Pro 300, $\frac{1}{2}$ " , 44 - 220 lbf·ft
15176	Pro 340, $\frac{1}{2}$ " , 45 - 250 lbf·ft
15177 [*]	Pro 400, $\frac{3}{4}$ " , 60 - 300 lbf·ft

INDUSTRIAL RATCHET - lbf·in ONLY

15052 ⁺	Pro 50, $\frac{3}{8}$ " , 90 - 440 lbf·in
15053 ⁻	Pro 100, $\frac{1}{2}$ " , 200 - 900 lbf·in
15054	Pro 200, $\frac{1}{2}$ " , 400 - 1,800 lbf·in
15055	Pro 300, $\frac{1}{2}$ " , 500 - 2,500 lbf·in
15056	Pro 340, $\frac{1}{2}$ " , 500 - 3,000 lbf·in
15057 [*]	Pro 400, $\frac{3}{4}$ " , 700 - 3,500 lbf·in

⁺ Supplied with $\frac{1}{2}$ " sq. dr. adaptor

⁻ Supplied with $\frac{3}{8}$ " sq. dr. adaptor

^{*} Model 400 supplied with a Stepped Square



PROFESSIONAL TORQUE WRENCHES

AUTOMOTIVE RATCHET - DUAL SCALE

15008	Pro 15, ¼", 3 - 15 N·m, 27 - 132 lbf·in
15009	Pro 15, ⅜", 3 - 15 N·m, 27 - 132 lbf·in
15010	Pro 25, ¼", 5 - 25 N·m, 44 - 220 lbf·in
15011	Pro 25, ⅜", 5 - 25 N·m, 44 - 220 lbf·in
15012	Pro 50, ⅜", 10 - 50 N·m, 7.5 - 37.5 lbf·ft
15013	Pro 50, ½", 10 - 50 N·m, 7.5 - 37.5 lbf·ft
15014	Pro 100, ⅜", 20 - 100 N·m, 15 - 75 lbf·ft
15015	Pro 100, ½", 20 - 100 N·m, 15 - 75 lbf·ft
15016	Pro 200, ½", 40 - 200 N·m, 30 - 150 lbf·ft

AUTOMOTIVE RATCHET - N·m ONLY

15018	Pro 15, ¼", 3 - 15 N·m
15019	Pro 15, ⅜", 3 - 15 N·m
15020	Pro 25, ¼", 5 - 25 N·m
15021	Pro 25, ⅜", 5 - 25 N·m
15022	Pro 50, ⅜", 10 - 50 N·m
15023	Pro 50, ½", 10 - 50 N·m
15024	Pro 100, ⅜", 20 - 100 N·m
15025	Pro 100, ½", 20 - 100 N·m
15026	Pro 200, ½", 40 - 200 N·m

AUTOMOTIVE RATCHET - lbf·ft ONLY

15142	Pro 50, ⅜", 7.5 - 37.5 lbf·ft
15143	Pro 50, ½", 7.5 - 37.5 lbf·ft
15144	Pro 100, ⅜", 15 - 75 lbf·ft
15145	Pro 100, ½", 15 - 75 lbf·ft
15146	Pro 200, ½", 30 - 150 lbf·ft

AUTOMOTIVE RATCHET - lbf·in ONLY

15028	Pro 15, ¼", 27 - 132 lbf·in
15029	Pro 15, ⅜", 27 - 132 lbf·in
15030	Pro 25, ¼", 44 - 220 lbf·in
15031	Pro 25, ⅜", 44 - 220 lbf·in
15032	Pro 50, ⅜", 90 - 440 lbf·in
15033	Pro 50, ½", 90 - 440 lbf·in
15034	Pro 100, ⅜", 200 - 900 lbf·in
15035	Pro 100, ½", 200 - 900 lbf·in
15036	Pro 200, ½", 400 - 1,800 lbf·in



TORQUE WRENCHES





PROFESSIONAL TORQUE WRENCHES





TORQUE HANDLE ADJUSTABLE 16 mm SPIGOT - DUAL SCALE

15060	Pro 15, 16 mm spigot, 3 - 15 N·m, 27 - 132 lbf·in
15061	Pro 25, 16 mm spigot, 5 - 25 N·m, 44 - 220 lbf·in
15062	Pro 50, 16 mm spigot, 10 - 50 N·m, 7.5 - 37.5 lbf·ft
15063	Pro 100, 16 mm spigot, 20 - 100 N·m, 15 - 75 lbf·ft
15064	Pro 200, 16 mm spigot, 40 - 200 N·m, 30 - 150 lbf·ft
15065	Pro 300, 16 mm spigot, 60 - 300 N·m, 44 - 222 lbf·ft

TORQUE HANDLE ADJUSTABLE 16 mm SPIGOT - N·m ONLY

15070	Pro 15, 16 mm spigot, 3 - 15 N·m
15071	Pro 25, 16 mm spigot, 5 - 25 N·m
15072	Pro 50, 16 mm spigot, 10 - 50 N·m
15073	Pro 100, 16 mm spigot, 20 - 100 N·m
15074	Pro 200, 16 mm spigot, 40 - 200 N·m
15075	Pro 300, 16 mm spigot, 60 - 300 N·m

TORQUE HANDLE ADJUSTABLE 16 mm SPIGOT - lbf·ft ONLY

15082	Pro 50, 16 mm spigot, 7.5 - 37.5 lbf·ft
15083	Pro 100, 16 mm spigot, 15 - 75 lbf·ft
15084	Pro 200, 16 mm spigot, 30 - 150 lbf·ft
15085	Pro 300, 16 mm spigot, 44 - 220 lbf·ft

TORQUE HANDLE ADJUSTABLE 16 mm SPIGOT - lbf·in ONLY

15090	Pro 15, 16 mm spigot, 27 - 132 lbf·in
15091	Pro 25, 16 mm spigot, 44 - 220 lbf·in
15092	Pro 50, 16 mm spigot, 90 - 440 lbf·in
15093	Pro 100, 16 mm spigot, 200 - 900 lbf·in
15094	Pro 200, 16 mm spigot, 400 - 1,800 lbf·in
15095	Pro 300, 16 mm spigot, 500 - 2,500 lbf·in

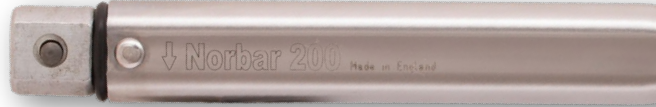


16 mm Spigot End





PROFESSIONAL TORQUE WRENCHES



FEMALE TORQUE HANDLE ADJUSTABLE - DUAL SCALE

15100	Pro 15, 9 x 12 mm, 3 - 15 N·m, 27 - 132 lbf·in
15101	Pro 25, 9 x 12 mm, 5 - 25 N·m, 44 - 220 lbf·in
15102	Pro 50, 9 x 12 mm, 10 - 50 N·m, 7.5 - 37.5 lbf·ft
15103	Pro 100, 9 x 12 mm, 20 - 100 N·m, 15 - 75 lbf·ft
15104	Pro 200, 9 x 12 mm, 40 - 200 N·m, 30 - 150 lbf·ft
15105	Pro 200, 14 x 18 mm, 40 - 200 N·m, 30 - 150 lbf·ft
15106	Pro 300, 14 x 18 mm, 60 - 300 N·m, 44 - 222 lbf·ft
15107	Pro 340, 14 x 18 mm, 60 - 340 N·m, 44 - 250 lbf·ft
15108	Pro 400, 14 x 18 mm, 80 - 400 N·m, 60 - 300 lbf·ft

FEMALE TORQUE HANDLE ADJUSTABLE - N·m ONLY

15110	Pro 15, 9 x 12 mm, 3 - 15 N·m
15111	Pro 25, 9 x 12 mm, 5 - 25 N·m
15112	Pro 50, 9 x 12 mm, 10 - 50 N·m
15113	Pro 100, 9 x 12 mm, 20 - 100 N·m
15114	Pro 200, 9 x 12 mm, 40 - 200 N·m
15115	Pro 200, 14 x 18 mm, 40 - 200 N·m
15116	Pro 300, 14 x 18 mm, 60 - 300 N·m
15117	Pro 340, 14 x 18 mm, 60 - 340 N·m
15118	Pro 400, 14 x 18 mm, 80 - 400 N·m



FEMALE TORQUE HANDLE ADJUSTABLE - lbf·ft ONLY

15122	Pro 50, 9 x 12 mm, 7.5 - 37.5 lbf·ft
15123	Pro 100, 9 x 12 mm, 15 - 75 lbf·ft
15124	Pro 200, 9 x 12 mm, 30 - 150 lbf·ft
15125	Pro 200, 14 x 18 mm, 30 - 150 lbf·ft
15126	Pro 300, 14 x 18 mm, 44 - 220 lbf·ft
15127	Pro 340, 14 x 18 mm, 45 - 250 lbf·ft
15128	Pro 400, 14 x 18 mm, 60 - 300 lbf·ft

FEMALE TORQUE HANDLE ADJUSTABLE - lbf·in ONLY

15130	Pro 15, 9 x 12 mm, 27 - 132 lbf·in
15131	Pro 25, 9 x 12 mm, 44 - 220 lbf·in
15132	Pro 50, 9 x 12 mm, 90 - 440 lbf·in
15133	Pro 100, 9 x 12 mm, 200 - 900 lbf·in
15134	Pro 200, 9 x 12 mm, 400 - 1,800 lbf·in
15135	Pro 200, 14 x 18 mm, 400 - 1,800 lbf·in
15136	Pro 300, 14 x 18 mm, 500 - 2,500 lbf·in
15137	Pro 340, 14 x 18 mm, 500 - 3,000 lbf·in
15138	Pro 400, 14 x 18 mm, 700 - 3,500 lbf·in



PROFESSIONAL 'P' TYPE TORQUE WRENCHES

For production line applications requiring a sealed torque setting, 'P' Type wrenches have no scale and must be set against a suitable torque measuring device

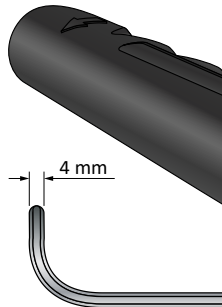


Key

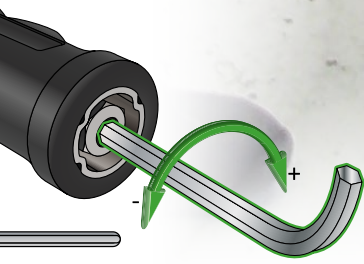
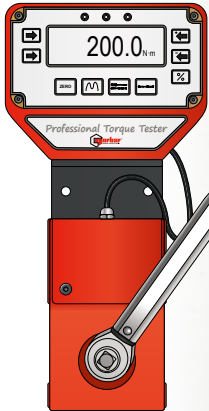
Features



Must be set against a suitable torque measuring device



TORQUE WRENCHES





PROFESSIONAL 'P' TYPE TORQUE WRENCHES



INDUSTRIAL RATCHET (Push-through square)

13051	Pro 60, $\frac{3}{8}$ ", 12 - 60 N·m, 5 - 45 lbf·ft
13052	Pro 60, $\frac{1}{2}$ ", 12 - 60 N·m, 5 - 45 lbf·ft
13053	Pro 100, $\frac{3}{8}$ ", 20 - 100 N·m, 15 - 75 lbf·ft
13054	Pro 100, $\frac{1}{2}$ ", 20 - 100 N·m, 15 - 75 lbf·ft
13055	Pro 200, $\frac{1}{2}$ ", 40 - 200 N·m, 30 - 150 lbf·ft
13057	Pro 300, $\frac{1}{2}$ ", 60 - 300 N·m, 45 - 220 lbf·ft
13056	Pro 400, $\frac{3}{4}$ ", 80 - 400 N·m, 60 - 300 lbf·ft
11698	Calibration Kit Professional 'P' Type

AUTOMOTIVE RATCHET (Reversible)

11164	Pro 60, $\frac{3}{8}$ ", 12 - 60 N·m, 5 - 45 lbf·ft
11171	Pro 60, $\frac{1}{2}$ ", 12 - 60 N·m, 5 - 45 lbf·ft
11138	Pro 100, $\frac{3}{8}$ ", 20 - 100 N·m, 15 - 75 lbf·ft
11139	Pro 100, $\frac{1}{2}$ ", 20 - 100 N·m, 15 - 75 lbf·ft
11140	Pro 200, $\frac{1}{2}$ ", 40 - 200 N·m, 30 - 150 lbf·ft
SQ2222	Pre-set, etch and certify (Allow 3 days delivery for this service)

SQ2222 Pre-set, etch and certify
(Allow 3 days delivery for
this service)



*Colour-coded
adjustment seals*



TORQUE HANDLE - 16 mm SPIGOT

11167	Pro 60, 16 mm spigot, 12 - 60 N·m, 5 - 45 lbf·ft
11143	Pro 100, 16 mm spigot, 20 - 100 N·m, 15 - 75 lbf·ft
11144	Pro 200, 16 mm spigot, 40 - 200 N·m, 30 - 150 lbf·ft
11117	Pro 300, 16 mm spigot, 60 - 300 N·m, 45 - 220 lbf·ft
SQ2222	Pre-set, etch and certify (Allow 3 days delivery for this service)

FEMALE TORQUE HANDLE

11170	Pro 60, 9 x 12 mm, 12 - 60 N·m, 5 - 45 lbf·ft
11150	Pro 100, 9 x 12 mm, 20 - 100 N·m, 15 - 75 lbf·ft
11151	Pro 200, 9 x 12 mm, 40 - 200 N·m, 30 - 150 lbf·ft
11152	Pro 200, 14 x 18 mm, 40 - 200 N·m, 30 - 150 lbf·ft
11153	Pro 300, 14 x 18 mm, 60 - 300 N·m, 45 - 220 lbf·ft
13068	Pro 400, 14 x 18 mm, 80 - 400 N·m, 60 - 300 lbf·ft
SQ2222	Pre-set, etch and certify (Allow 3 days delivery for this service)



*Professional 'P' Type torque
wrenches organised ready for use*



PROFESSIONAL TORQUE WRENCHES NLD SERIES

For precision applications
up to 1,500 Nm



Key Features



All models supplied in carry case

TORQUE WRENCHES





PROFESSIONAL TORQUE WRENCHES NLD SERIES

ADJUSTABLE RATCHET - DUAL SCALE

14037	Pro 650, $\frac{3}{4}$ ", 130 - 650 N·m, 100 - 480 lbf·ft
14015	Pro 800, $\frac{3}{4}$ ", 200 - 800 N·m, 150 - 600 lbf·ft
14016	Pro 800, 1", 200 - 800 N·m, 150 - 600 lbf·ft
14002	Pro 1000, $\frac{3}{4}$ ", 300 - 1,000 N·m, 220 - 750 lbf·ft
14003	Pro 1000, 1", 300 - 1,000 N·m, 220 - 750 lbf·ft
14004	Pro 1500, $\frac{3}{4}$ ", 500 - 1,500 N·m, 370 - 1,100 lbf·ft
14005	Pro 1500, 1", 500 - 1,500 N·m, 370 - 1,100 lbf·ft



*Push-Through
Ratchet*

ADJUSTABLE RATCHET - N·m ONLY

14038	Pro 650, $\frac{3}{4}$ ", 130 - 650 N·m
14024	Pro 800, $\frac{3}{4}$ ", 200 - 800 N·m
14025	Pro 800, 1", 200 - 800 N·m
14026	Pro 1000, $\frac{3}{4}$ ", 300 - 1,000 N·m
14027	Pro 1000, 1", 300 - 1,000 N·m
14028	Pro 1500, $\frac{3}{4}$ ", 500 - 1,500 N·m
14029	Pro 1500, 1", 500 - 1,500 N·m

RATCHET PRODUCTION 'P' TYPE

(Must be set using a Torque Tester)

14039	Pro 650, $\frac{3}{4}$ ", 130 - 650 N·m, 100 - 480 lbf·ft
14017	Pro 800, $\frac{3}{4}$ ", 200 - 800 N·m, 150 - 600 lbf·ft
14018	Pro 800, 1", 200 - 800 N·m, 150 - 600 lbf·ft
14007	Pro 1000, $\frac{3}{4}$ ", 300 - 1,000 N·m, 220 - 750 lbf·ft
14008	Pro 1000, 1", 300 - 1,000 N·m, 220 - 750 lbf·ft
14009	Pro 1500, $\frac{3}{4}$ ", 500 - 1,500 N·m, 370 - 1,100 lbf·ft
14010	Pro 1500, 1", 500 - 1,500 N·m, 370 - 1,100 lbf·ft
SQ2222	Pre-set, etch and certify (Allow 3 days delivery for this service)

ADJUSTABLE RATCHET - lbf·ft ONLY

14044	Pro 650, $\frac{3}{4}$ ", 100 - 480 lbf·ft
14045	Pro 800, $\frac{3}{4}$ ", 150 - 600 lbf·ft
14046	Pro 800, 1", 150 - 600 lbf·ft
14047	Pro 1000, $\frac{3}{4}$ ", 220 - 750 lbf·ft
14048	Pro 1000, 1", 220 - 750 lbf·ft
14049	Pro 1500, $\frac{3}{4}$ ", 370 - 1,100 lbf·ft
14050	Pro 1500, 1", 370 - 1,100 lbf·ft



TORQUE WRENCHES

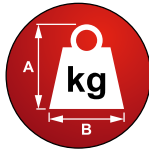




PROFESSIONAL TORQUE WRENCHES NLD SERIES

TORQUE HANDLE ADJUSTABLE - DUAL SCALE

14040 Pro 650, 22 mm spigot, 130 - 650 N·m,
100 - 480 lbf·ft

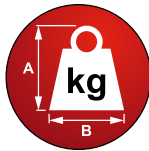


TORQUE HANDLE PRODUCTION 'P' TYPE

(Must be set using a Torque Tester)

14042 Pro 650, 22 mm spigot, 130 - 650 N·m,
100 - 480 lbf·ft

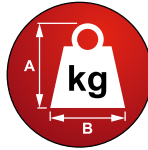
SQ2222 Pre-set, etch and certify
(Allow 3 days delivery for this service)





FEMALE TORQUE HANDLE ADJUSTABLE - DUAL SCALE

14041 Pro 650, 14 x 18 mm, 130 - 650 N·m,
100 - 480 lbf·ft

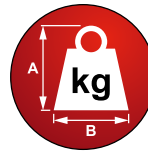


FEMALE TORQUE HANDLE PRODUCTION 'P' TYPE

(Must be set using a Torque Tester)

14043 Pro 650, 14 x 18 mm, 130 - 650 N·m,
100 - 480 lbf·ft

SQ2222 Pre-set, etch and certify
(Allow 3 days delivery for this service)



PRO 650 - 1500 ACCESSORY

14142 Extension Handle (included with Pro 800
- 1500 as standard)



INDUSTRIAL TORQUE WRENCHES - NEW GENERATION



A long-time customer favourite for their unmistakable signal and robustness but now simple to accurately set and split for ease of storage and transportation.



Key Features

TORQUE WRENCHES



ION





INDUSTRIAL TORQUE WRENCHES - NEW GENERATION



RATCHET ADJUSTABLE - DUAL SCALE

120101	3AR-N, $\frac{3}{4}$ ", 120 - 600 N·m, 100 - 450 lbf·ft
120101.01	3AR-N, 1", 120 - 600 N·m, 100 - 450 lbf·ft
120110	4AR-N, $\frac{3}{4}$ ", 200 - 800 N·m, 150 - 600 lbf·ft
120110.01	4AR-N, 1", 200 - 800 N·m, 150 - 600 lbf·ft
120115	5R-N, $\frac{3}{4}$ ", 300 - 1,000 N·m, 200 - 750 lbf·ft
120115.01	5R-N, 1", 300 - 1,000 N·m, 200 - 750 lbf·ft
120118	5AR-N, $\frac{3}{4}$ ", 700 - 1,500 N·m, 500 - 1,000 lbf·ft
120118.01	5AR-N, 1", 700 - 1,500 N·m, 500 - 1,000 lbf·ft
120120	6R-N, 1", 900 - 2,000 N·m, 700 - 1,500 lbf·ft

RATCHET ADJUSTABLE - N·m ONLY

120107	3AR-N, $\frac{3}{4}$ ", 120 - 600 N·m
120107.01	3AR-N, 1", 120 - 600 N·m
120114	4AR-N, $\frac{3}{4}$ ", 200 - 800 N·m
120114.01	4AR-N, 1", 200 - 800 N·m
120117	5R-N, $\frac{3}{4}$ ", 300 - 1,000 N·m
120117.01	5R-N, 1", 300 - 1,000 N·m
120119	5AR-N, $\frac{3}{4}$ ", 700 - 1,500 N·m
120119.01	5AR-N, 1", 700 - 1,500 N·m
120121	6R-N, 1", 900 - 2,000 N·m



TORQUE WRENCH DUAL SCALE

120102	3AR-N, $\frac{3}{4}$ "
120102.01	3AR-N, 1"

TORQUE WRENCH N·m ONLY

120108	3AR-N, $\frac{3}{4}$ "
--------	------------------------

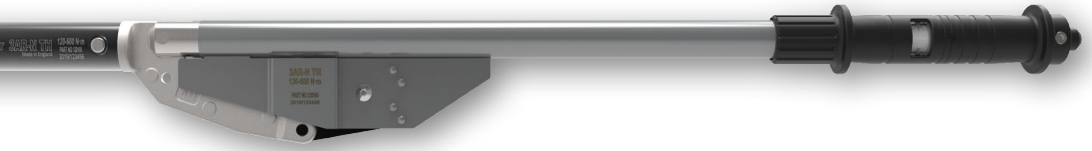
RATCHET PRODUCT

(Must be set using a Torque Wrench)

120104	3AR-N, $\frac{3}{4}$ "
120104.01	3AR-N, 1"
120111	4AR-N, $\frac{3}{4}$ "
120111.01	4AR-N, 1"
120116	5R-N, $\frac{3}{4}$ "
120116.01	5R-N, 1"
120130	5AR-N, $\frac{3}{4}$ "
120130.01	5AR-N, 1"



TION



HANDLE ADJUSTABLE - LE

3AR-N, 22 mm Spigot, 120 - 600 N·m,
100 - 450 lbf·ft

HANDLE ADJUSTABLE - N·m ONLY

3AR-N, 22 mm Spigot, 120 - 600 N·m



DUCTION 'P' TYPE

(Must be set using a Torque Tester)

3AR-N, 3/4", 120 - 600 N·m, 100 - 450 lbf·ft

3AR-N, 1", 120 - 600 N·m, 100 - 450 lbf·ft

6R-N, 3/4", 200 - 800 N·m, 150 - 600 lbf·ft

6R-N, 1", 200 - 800 N·m, 150 - 600 lbf·ft

6R-N, 3/4", 300 - 1,000 N·m, 200 - 750 lbf·ft

6R-N, 1", 300 - 1,000 N·m, 200 - 750 lbf·ft

6R-N, 3/4", 700 - 1,500 N·m, 500 - 1,000 lbf·ft

6R-N, 1", 700 - 1,500 N·m, 500 - 1,000 lbf·ft



TORQUE HANDLE PRODUCTION 'P' TYPE

(Must be set using a Torque Tester)

120105

3AR-N, 22 mm Spigot,
120 - 600 N·m, 100 - 450 lbf·ft



*5AR-N adjusting nut (left)
alongside the double-barrelled
6R-N adjusting nuts*

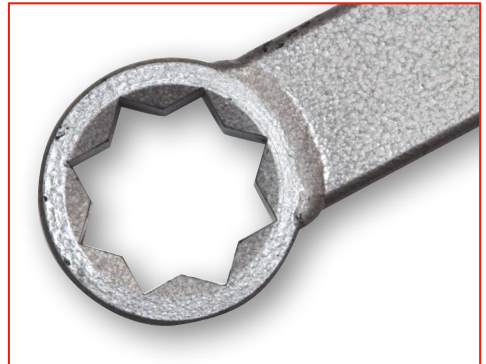
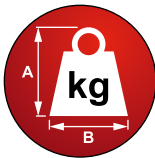


INDUSTRIAL TORQUE WRENCH - BI-SQUARE



BI-SQUARE - DUAL SCALE

12026 | $1\frac{11}{16}$ " Bi-Square,
300 - 1,000 N·m, 200 - 750 lbf·ft





The 1 $\frac{1}{16}$ " Bi-square version of the Industrial Torque Wrench was developed specifically with rail track maintenance in mind. The critical need of the rail industry is to reduce the chance of any object being left on the track. Fitting directly onto rail fishplate bolts means that no socket or square drive is required, two components that could potentially be separated from the regular version of the Industrial Torque Wrench.

Other versions of this tool are available on request.





ELECTRODE WRENCHES



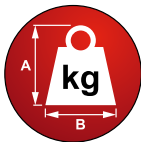
LOW RANGE

12506	8" (200 mm) 312 N·m
12530	10" (250 mm) 542 N·m
12531	12" (300 mm) 780 N·m

Other models available on request.

HIGH RANGE

12532	14" (350 mm) 1,140 N·m
12533	16" (400 mm) 1,300 N·m
12535	18" (450 mm) 1,500 N·m
12536	20" (500 mm) 2,000 N·m
12537	22" (550 mm) 2,370 N·m
12538	24" (600 mm) 2,370 N·m
12538.HD	24" (600 mm) 3,200 N·m





The correct tightening of carbon/graphite electrodes is known to increase the energy efficiency of electric arc furnaces and prevents electrode sections from being lost in the furnace. Norbar Electrode wrenches are based on two well proven torque wrench designs; electrodes up to 8 inches use the 'Professional' type, 9 inches and upwards are based on the 'Industrial' wrench.

Key Features





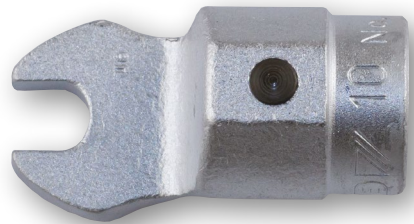
OPEN END FITTINGS FOR 16 mm TORQUE HANDLE

OPEN ENDS METRIC

29841	7 mm, 9 N·m*
29842	8 mm, 13 N·m*
29843	9 mm, 19 N·m*
29844	10 mm, 25 N·m*
29845	11 mm, 32 N·m*
29846	12 mm, 41 N·m*
29847	13 mm, 51 N·m*
29848	14 mm, 63 N·m*
29849	15 mm, 77 N·m*
29850	16 mm, 92 N·m*
29851	17 mm, 107 N·m*
29876	18 mm, 128 N·m*
29877	19 mm, 149 N·m*
29852	20 mm, 172 N·m*
29853	21 mm, 198 N·m*
29854	22 mm, 225 N·m*
29855	23 mm, 255 N·m*
29856	24 mm, 287 N·m*
29857	25 mm, 322 N·m*
29858	26 mm, 330 N·m*
29878	27 mm, 330 N·m*
29860	29 mm, 330 N·m*
29861	30 mm, 330 N·m*
29863	32 mm, 330 N·m*
297100	36 mm, 330 N·m*

OPEN ENDS IMPERIAL

29701	$\frac{1}{4}$ " , 7 N·m*
29702	$\frac{5}{16}$ " , 13 N·m*
29703	$\frac{3}{8}$ " , 21 N·m*
29704	$\frac{7}{16}$ " , 32 N·m*
29705	$\frac{1}{2}$ " , 48 N·m*
29706	$\frac{9}{16}$ " , 67 N·m*
29707	$\frac{5}{8}$ " , 90 N·m*
29708	$\frac{11}{16}$ " , 118 N·m*
29709	$\frac{3}{4}$ " , 150 N·m*
29710	$\frac{13}{16}$ " , 187 N·m*
29711	$\frac{7}{8}$ " , 230 N·m*
29712	$\frac{15}{16}$ " , 281 N·m*
29713	1" , 330 N·m*
29714	1 $\frac{1}{16}$ " , 330 N·m*
29715	1 $\frac{1}{8}$ " , 330 N·m*
29716	1 $\frac{3}{16}$ " , 330 N·m*
29717	1 $\frac{1}{4}$ " , 330 N·m*
29718	1 $\frac{5}{16}$ " , 330 N·m*



* Max torque values listed are proof torques quoted in BS 192:1982 & BS 3555:1982 (tested on hardened hexagon test stud).

TORQUE WRENCHES



ES



988



RING END FITTINGS FOR 16 mm TORQUE HANDLE



RING E

- 29881
- 29882
- 29883
- 29884
- 29885
- 29886
- 29887
- 29888
- 29889
- 29890
- 29891
- 29913
- 29914
- 29892
- 29893
- 29894
- 29895
- 29896
- 29915

* Max t
(teste



S

ENDS METRIC

7 mm, 25 N·m*
8 mm, 35 N·m*
9 mm, 45 N·m*
10 mm, 52 N·m*
11 mm, 73 N·m*
12 mm, 89 N·m*
13 mm, 107 N·m*
14 mm, 128 N·m*
15 mm, 150 N·m*
16 mm, 175 N·m*
17 mm, 201 N·m*
18 mm, 230 N·m*
19 mm, 261 N·m*
20 mm, 294 N·m*
21 mm, 330 N·m*
22 mm, 330 N·m*
23 mm, 330 N·m*
24 mm, 330 N·m*
27 mm, 330 N·m*

RING ENDS IMPERIAL

29726	1/4", 25 N·m*
29727	5/16", 35 N·m*
29728	3/8", 42 N·m*
29729	7/16", 73 N·m*
29730	1/2", 115 N·m*
29731	9/16", 170 N·m*
29732	5/8", 226 N·m*
29733	11/16", 260 N·m*
29734	3/4", 305 N·m*
29735	13/16", 330 N·m*
29736	7/8", 330 N·m*
29737	15/16", 330 N·m*
29738	1", 330 N·m*
29739	1 1/16", 330 N·m*



*Torque values listed are proof torques quoted in BS 192:1982 & BS 3555:1988 (based on hardened hexagon test stud).



FLARE END FITTINGS FOR 16 mm TORQUE HANDLE



FLARE ENDS METRIC

29921	7 mm, 7 N·m*
29922	8 mm, 6 N·m*
29923	9 mm, 5 N·m*
29924	10 mm, 26 N·m*
29926	12 mm, 13 N·m*
29927	13 mm, 34 N·m*
29928	14 mm, 24 N·m*
29929	15 mm, 18 N·m*
29930	16 mm, 66 N·m*

FLARE ENDS METRIC

29931	17 mm, 56 N·m*
29953	18 mm, 45 N·m*
29954	19 mm, 80 N·m*
29932	20 mm, 60 N·m*
29933	21 mm, 43 N·m*
29934	22 mm, 172 N·m*
29935	23 mm, 153 N·m*
29936	24 mm, 118 N·m*
29955	27 mm, 76 N·m*

* Max torque values listed are proof torques quoted in BS 192:1982 & BS 3555:1988 (tested on hardened hexagon test stud).

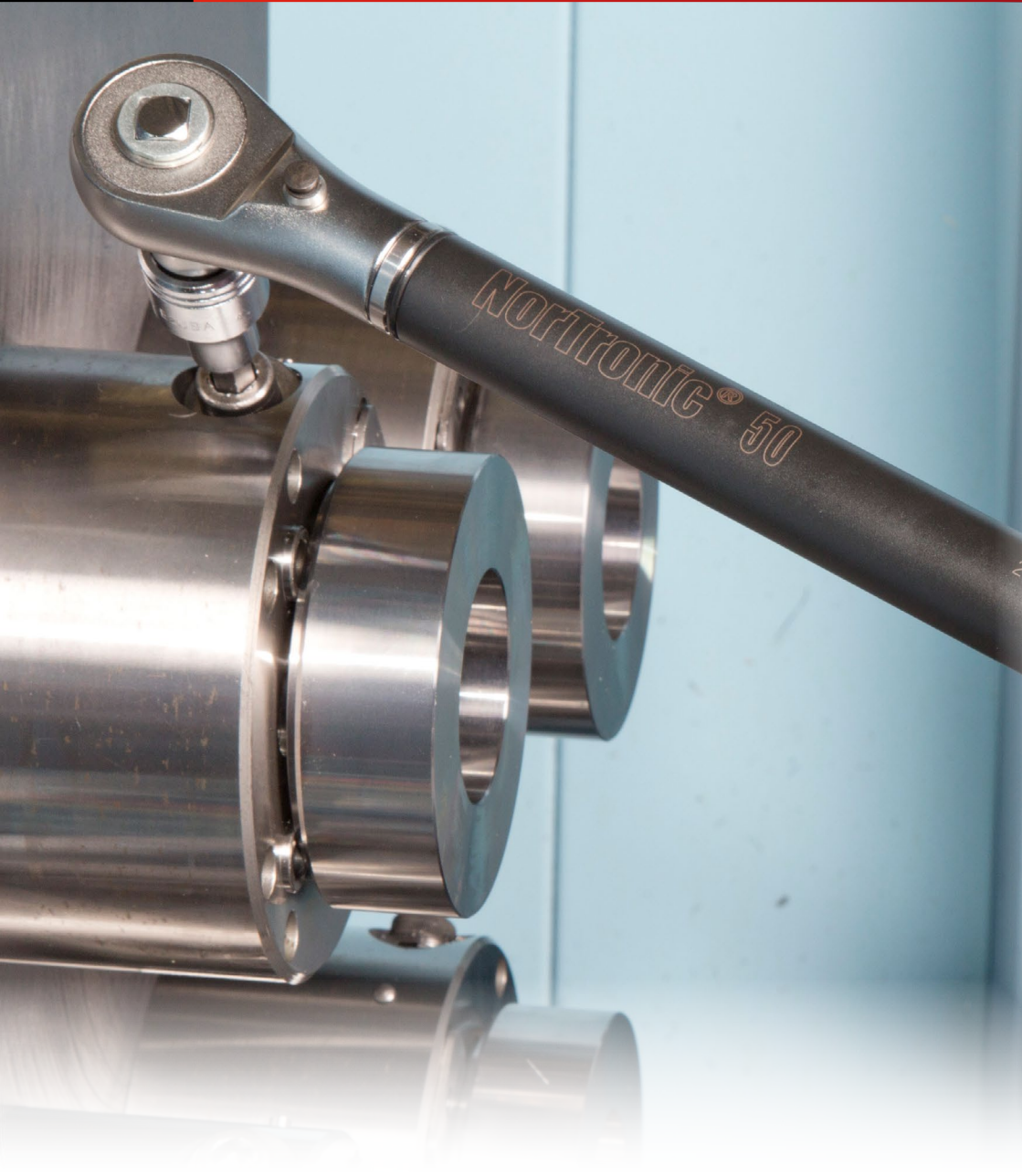
ES

TORQUE WRENCHES





SPIGOT ACCESSORIES





16 mm SPIGOT ACCESSORIES

44509	3/8" Ratchet with Push-through square
29825	1/2" Ratchet with Push-through square
44510	1/2" Ratchet with Push-through square for NorTronic
29828	3/8" Fixed Square Drive
29827	1/2" Fixed Square Drive
29829	3/8" Reversible Ratchet Head
29830	1/2" Reversible Ratchet Head
29832	Blank End Fitting
85242	Blank End Fitting for Open End
11343	Blank End Fitting for Ring End
72000	Spigot Adaptor 16 mm female to 22 mm male

22 mm SPIGOT ACCESSORIES

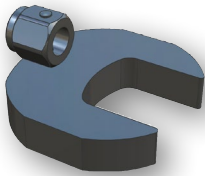
29969	3/4" Square Drive Fixed Head
29972	3/4" Ratchet with Push-through square
85719	Blank End Fitting for Open End
85720	Blank End Fitting for Ring End



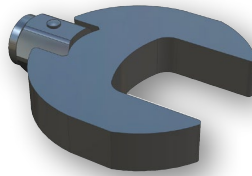


MANUFACTURED TO ORDER LARGE END FITTINGS

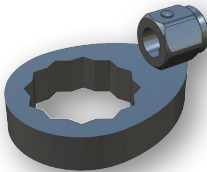
Where standard product do not fit the needs of a specific requirements Norbar are able to manufacture a wide range of different styled end fittings to better suit.



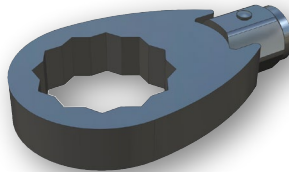
Open Offsets



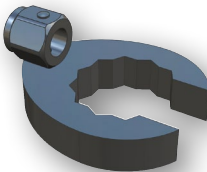
Open Inline



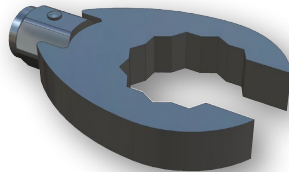
Ring Offsets



Ring Inline



Flare Offsets



Flare Inline



TORQUE WRENCHES





Norbar Torque Tools offers a range of high-precision electronic torque tools including a screwdriver and an extensive selection of torque wrenches to cover torque values from 0.45 to 800 N.m.

Many of the options in this section have the capability to connect to software that more easily manages data and configures settings. The highly accurate electronic torque and angle tools are the perfect solution for applications that require precision and control.



CONTENTS

- ProTronic® Electronic Torque Wrenches
-ProTronic® Plus Electronic Torque Wrenches
- ProTronic® Plus Electronic Screwdriver
- ProTronic® Plus Model 10 and Model 30
-ProTronic® Plus Torque App
-NorTronic® Electronic Torque Wrenches



orque

to
these
olution



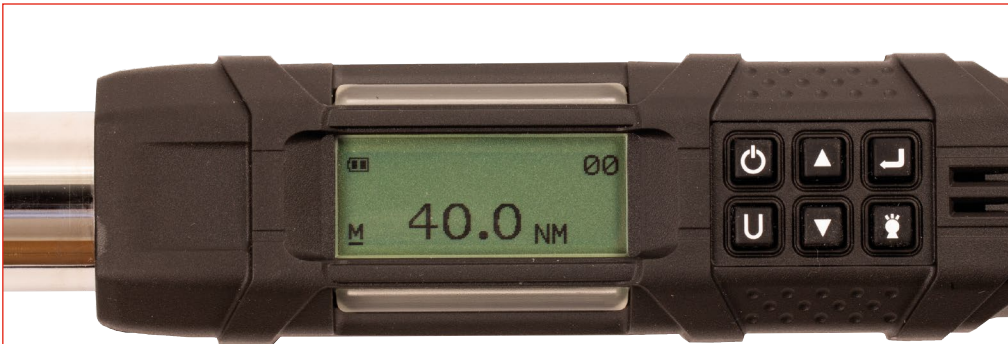
PROTRONIC® ELECTRONIC TORQUE WRENCHES



The ProTronic® is a high precision electronic torque wrench with a large backlit LCD display, that measures accurate and consistent torque readings. It also features an audible alarm when pre-set torque/angle value is reached.



Key Features



Large backlit LCD display

ELECTRONIC TORQUE WRENCHES



Dual progressive LEDs positioned both sides of the wrench provide an easy visual representation of torque progress

wrench
rate and
e buzzer





PROTRONIC® ELECTRONIC TORQUE WRENCHES

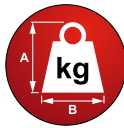


ELECTRONIC TORQUE WRENCHES



PROTRONIC

130517	ProTronic 100, $\frac{3}{8}$ " 5 - 100 N·m
130518	ProTronic 100, $\frac{1}{2}$ " 5 - 100 N·m
130519	ProTronic 200, $\frac{1}{2}$ " 10 - 200 N·m
130520	ProTronic 340, $\frac{1}{2}$ " 17 - 340 N·m





PROTRONIC® PLUS ELECTRONIC TORQUE WRENCH



The ProTronic® Plus retains all the features available in the ProTronic® standard versions and then adds more. Equipped with Bluetooth®, the ProTronic® Plus works alongside a specially created app that allows uploading of wrench configurations and logging of streamed torque and angle readings.



Key Features

ELECTRONIC TORQUE WRENCHES



HES





PROTRONIC® PLUS ELECTRONIC TORQUE WRENCH

Dual progressive LEDs positioned both sides of the wrench provide an easy visual representation of torque progress



ELECTRONIC TORQUE WRENCHES



HES



Large backlit LCD display

PROTRONIC PLUS

130512	ProTronic Plus 100, $\frac{3}{8}$ ", 5 - 100 N·m
130513	ProTronic Plus 100, $\frac{1}{2}$ ", 5 - 100 N·m
130514	ProTronic Plus 200, $\frac{1}{2}$ ", 10 - 200 N·m
130515	ProTronic Plus 340, $\frac{1}{2}$ ", 17 - 340 N·m
130516	ProTronic Plus 800, $\frac{3}{4}$ ", 40 - 800 N·m



ProTronic® Plus 100 shown with an open end fitting attached (not included)





PROTRONIC® PLUS ELECTRONIC SCREWDRIVER



The ProTronic® Plus Screwdriver retains all the features of the ProTronic® standard and Plus Wrench in a smaller package with flush fitted buttons to avoid accidental activation during use.



Key Features

PROTRONIC PLUS

130524 ProTronic Plus 9,
1/4" Female Hex, 0.45 - 9 N·m



*ProTronic® Plus 9 comes supplied with L shaft
for easier torque application*

ELECTRONIC TORQUE WRENCHES



shaped handle



PROTRONIC® PLUS MODEL 10 AND MODEL 30





The ProTronic® Plus Model 10 and Model 30 retain all the features of the ProTronic® standard and Plus Wrench in a more compact design allowing for lower torque and access to more space limited applications.



Key Features



PROTRONIC PLUS

130522	ProTronic Plus 10, 1/4", 0.5 - 10 N·m
130523	ProTronic Plus 30, 1/4", 1.5 - 30 N·m



PROTRONIC® PLUS TORQUE APP



TorqApp™ is a free, mobile application that connects to ProTronic® Plus, allowing the user to intuitively change tool settings and download results. Currently available on Android devices with iOS to follow.



Key Features



ELECTRONIC TORQUE WRENCHES





NORTRONIC® ELECTRONIC TORQUE WRENCHES



The NorTronic®, Norbar's electronic torque wrench, sets the benchmark with its unique Torque Data System (TDS) software and combination of accuracy, wireless capability and angle measurement, in a versatile, robust and easy to use package.

➤ Key Features



Compatible with Norbar's huge range of spanner end fittings



Unique Torque Data System software enables data management and archiving to a PC



Production Line Control Software

NorTronic® DLL Plugin Software



ELECTRONIC TORQUE WRENCHES



- NorTronic® Tool
- NorTronic® Tool
- NorTronic® Tool
- NorTronic® Tool

DLL



NORTRONIC ELECTRONIC TORQUE WRENCHES



ELECTRONIC TORQUE WRENCHES



NORTRONIC 868 MHZ

43500	NorTronic 50, $\frac{3}{8}$ ", 868 MHz, 5 - 50 N·m
43501	NorTronic 50, $\frac{1}{2}$ ", 868 MHz, 5 - 50 N·m
43502	NorTronic 200, $\frac{1}{2}$ ", 868 MHz, 20 - 200 N·m
43503	NorTronic 330, $\frac{1}{2}$ ", 868 MHz, 33 - 330 N·m
43508	USB Wireless Adaptor, 868 MHz

For UK, Europe, Singapore and India

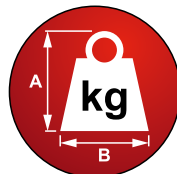
NORTRONIC 915 MHZ

43504	NorTronic 50, $\frac{3}{8}$ ", 915 MHz, 5 - 50 N·m
43505	NorTronic 50, $\frac{1}{2}$ ", 915 MHz, 5 - 50 N·m
43506	NorTronic 200, $\frac{1}{2}$ ", 915 MHz, 20 - 200 N·m
43507	NorTronic 330, $\frac{1}{2}$ ", 915 MHz, 33 - 330 N·m
43509	USB Wireless Adaptor, 915 MHz

For USA, Canada, Australia and New Zealand


NORTRONIC BLUETOOTH®


43534	NorTronic 50, $\frac{3}{8}$ ", Bluetooth®, 5 - 50 N·m
43535	NorTronic 50, $\frac{1}{2}$ ", Bluetooth®, 5 - 50 N·m
43536	NorTronic 200, $\frac{1}{2}$ ", Bluetooth®, 20 - 200 N·m
43537	NorTronic 330, $\frac{1}{2}$ ", Bluetooth®, 33 - 330 N·m
43513	USB Wireless Adaptor, Bluetooth®





Our aim is to give you the fastest possible service when you send in a wrench for repair. Therefore, our policy is that all Norbar wrenches will, at Norbar's discretion, either be repaired or a 'service replacement' tool will be offered. This policy may be extended to wrenches from other manufacturers sent to Norbar for repair/replacement.

 Repair

 Service Replacement



CONTENTS

..... Torque Screwdriver Spares

..... TT & Non-Magnetic Torque Wrench Spares

..... NorTorque Torque Wrench Spares

..... Model 5 & Professional Torque Wrench Spares

..... Professional NLD Series Torque Wrench Spares

..... Slimline Torque Wrench Spares

..... Industrial Torque Wrench Spares

..... Calibration Services

..... Declaration of Conformance

..... UKAS Accredited Calibration Certification



TORQUE SCREWDRIVER SPARES





TORQUE SCREWDRIVER SPARES

13593.001NM	TTs Handle Repair Kit for 1.5 N·m Tool
13593.003NM	TTs Handle Repair Kit for 3.0 N·m Tool
13593.006NM	TTs Handle Repair Kit for 6.0 N·m Tool
13593.013LBI	TTs Handle Repair Kit for 13 lbf·in Tool
13593.026LBI	TTs Handle Repair Kit for 26 lbf·in Tool
13593.053LBI	TTs Handle Repair Kit for 53 lbf·in Tool
13593.P	TTs Handle Repair Kit for P Type Tool
13594	TTs Adjusting Screw & Retention Clip Repair Kit
13595	TTs Body Tube & Cam Assembly Repair Kit
13596	TTs End Knob Assembly Repair Kit
13597	TTs ¼" Blade Repair Kit
13609	TTs P Type Locking Knob Repair Kit



TT & NON-MAGNETIC TORQUE WRENCH SPARES

TT WRENCHES UP TO 50 N·m / 35 lbf·ft

13425	¼" Ratchet Repair Kit, Mdl 20 N·m, 180 lbf·in
13426	⅜" Ratchet Repair Kit, Mdl 20 N·m, 180 lbf·in, 50 N·m, 35 lbf·ft
13427	½" Ratchet Repair Kit, Mdl 50 N·m, 35 lbf·ft
13636.020NLF	Handle Repair Kit, 20 N·m/lbf·in Scale
13636.020NM	Handle Repair Kit, 20 N·m Scale
13636.180LBI	Handle Repair Kit, 180 lbf·in Scale
13636.050NLF	Handle Repair Kit, 50 N·m/lbf·ft Scale
13636.050NM	Handle Repair Kit, 50 N·m Scale
13636.035LBF	Handle Repair Kit, 35 lbf·ft Scale
13417	Adjusting Knob Repair Kit
13637	Thrust Washer Repair Kit
11762	Rivet Repair Kit

TT WRENCHES 100 N·m / 75 lbf·ft TO 300 N·m / 250 lbf·ft

13411	Adjusting Knob Repair Kit
13415	Thrust Washer Repair Kit
13414	Rivet Repair Kit





TTi WRENCHES

13693	TTi20 ¼" Ratchet Lever Arm Assemblies
13694	TTi20 ⅜" Ratchet Lever Arm Assemblies
13690	TTi50 ⅜" Ratchet Lever Arm Assemblies
13691	TTi50 ½" Ratchet Lever Arm Assemblies
13212	Ratchet Repair Kit, ⅜" sq. dr., 60/100
13214	Ratchet Repair Kit, ½" sq. dr., 200
13215	Ratchet Repair Kit, ½" sq. dr., Mdl 250/300 N·m, 185/220 lbf·ft
13491	Ratchet Replacement Kit, ⅜" sq. dr., 60/100
13492	Ratchet Replacement Kit, ½" sq. dr., 50 - 200
13493	Ratchet Replacement Kit, ½" sq. dr. Mdl 250/300 N·m, 185/220 lbf·ft)

For Handle Repair Kits please see TT section to the left.

TTft_h WRENCHES

13695	TTft _h 20 9 x 12 mm Female End Repair Kit
13692	TTft _h 50 9 x 12 mm Female End Repair Kit

NON-MAGNETIC RATCHET REPAIR KITS

13769	Ratchet Repair Kit for 13900, 13902, 13904 & 13906
13770	Ratchet Repair Kit for 13901, 13903, 13905 & 13907



NORTORQUE TORQUE WRENCH SPARES

NORTORQUE TORQUE WRENCHES SQUARE DRIVE REPAIR KITS

13235	Sq. Dr. Repair Kit $\frac{3}{8}$ " (Mdl60)
13236	Sq. Dr. Repair Kit $\frac{1}{2}$ " (Mdl100)
13237	Sq. Dr. Repair Kit $\frac{1}{2}$ " (Mdl200/300/340)

NORTORQUE TORQUE WRENCHES RATCHET REPAIR KITS

13212	Ratchet Repair Kit $\frac{3}{8}$ " (Mdl60)
13213	Ratchet Repair Kit $\frac{1}{2}$ " (Mdl100)
13214	Ratchet Repair Kit $\frac{1}{2}$ " (Mdl200)
13215	Ratchet Repair Kit $\frac{1}{2}$ " (Mdl300/340)

NORTORQUE TORQUE WRENCHES OTHER REPAIR KITS

130500.K	Locking Knob Kit
150103.K	Thrust Washer and Screw Kit



13212 Repair Kit





NORTORQUE TORQUE WRENCHES HANDLE KITS

130501.060NLF	Handle Repair Kit, 60 N·m/lbf·ft Scale
130501.060NM	Handle Repair Kit, 60 N·m Scale
130501.100NLF	Handle Repair Kit, 100 N·m/lbf·ft Scale
130501.100NM	Handle Repair Kit, 100 N·m Scale
130501.200NLF	Handle Repair Kit, 200 N·m/lbf·ft Scale
130501.200NM	Handle Repair Kit, 200 N·m Scale
130501.300NLF	Handle Repair Kit, 300 N·m/lbf·ft Scale
130501.300NM	Handle Repair Kit, 300 N·m Scale
130501.340NLF	Handle Repair Kit, 340 N·m/lbf·ft Scale
130501.340NM	Handle Repair Kit, 340 N·m Scale



MODEL 5 & PROFESSIONAL TORQUE WRENCH SPARES

MODEL 5

- 13123 Spares Kit Model 5 Adjustable
- 13124 Calibration Kit Model 5 'P' Type

PROFESSIONAL TORQUE WRENCHES MODELS 60 - 400 (pre March 2015)

- 11598 'Automotive Ratchet' Repair Kit $\frac{3}{8}$ " (Pro 60 & 100)
- 11618 'Automotive Ratchet' Repair Kit $\frac{1}{2}$ " (Pro 60 & 100)
- 11622 'Automotive Ratchet' Repair Kit $\frac{1}{2}$ " Rev (Pro 200 & 300)
- 11623 Push-Through Beta 72 Tooth Repair Kit $\frac{1}{2}$ "
- 13212 'Industrial Ratchet' Repair Kit $\frac{3}{8}$ " (Pro 60/100)
- 13213 'Industrial Ratchet' Repair Kit $\frac{1}{2}$ " (Pro 60/100)
- 13214 'Industrial Ratchet' Repair Kit $\frac{1}{2}$ " (Pro 200)
- 13215 'Industrial Ratchet' Repair Kit Mdl 300/330 $\frac{1}{2}$ " for 13047, 13049 & 13057
- 13216 'Industrial Ratchet' Repair Kit Pro 400 $\frac{3}{4}$ " for 13050 & 13056
- 13190 Pro 400 $\frac{3}{4}$ " sq. dr. to 17 mm Hex.
- 13235 Sq. Dr. Repair Kit $\frac{3}{8}$ " (Pro 60/100)
- 13236 Sq. Dr. Repair Kit $\frac{1}{2}$ " (Pro 60/100)
- 13237 Sq. Dr. Repair Kit $\frac{1}{2}$ " Pro 200/300/330
- 13157 Spares Kit Prof. Handle (post 1st Jan 2001)
- 13217 Replacement Professional Handle Kit
- 11807 Handle Spares Kit Professional 'P' Type
- 11698 Calibration Kit Professional 'P' Type

WQA
AVIATION





MODEL 5 & PROFESSIONAL TORQUE WRENCH SPARES

PROFESSIONAL TORQUE WRENCHES PRO 15 - 25 SPARES KITS

15395	'Automotive Ratchet' Repair Kit, 1/4" sq. dr.
15396	'Automotive Ratchet' Repair Kit, 3/8" sq. dr.
15397.K	Handle Repair Kit
15398.K	Scale Mechanism Repair Kit
15399.K	Locking Knob Repair Kit
15400.K	Thrust Washer and Screw Kit
15401.K	Spring Repair Kit

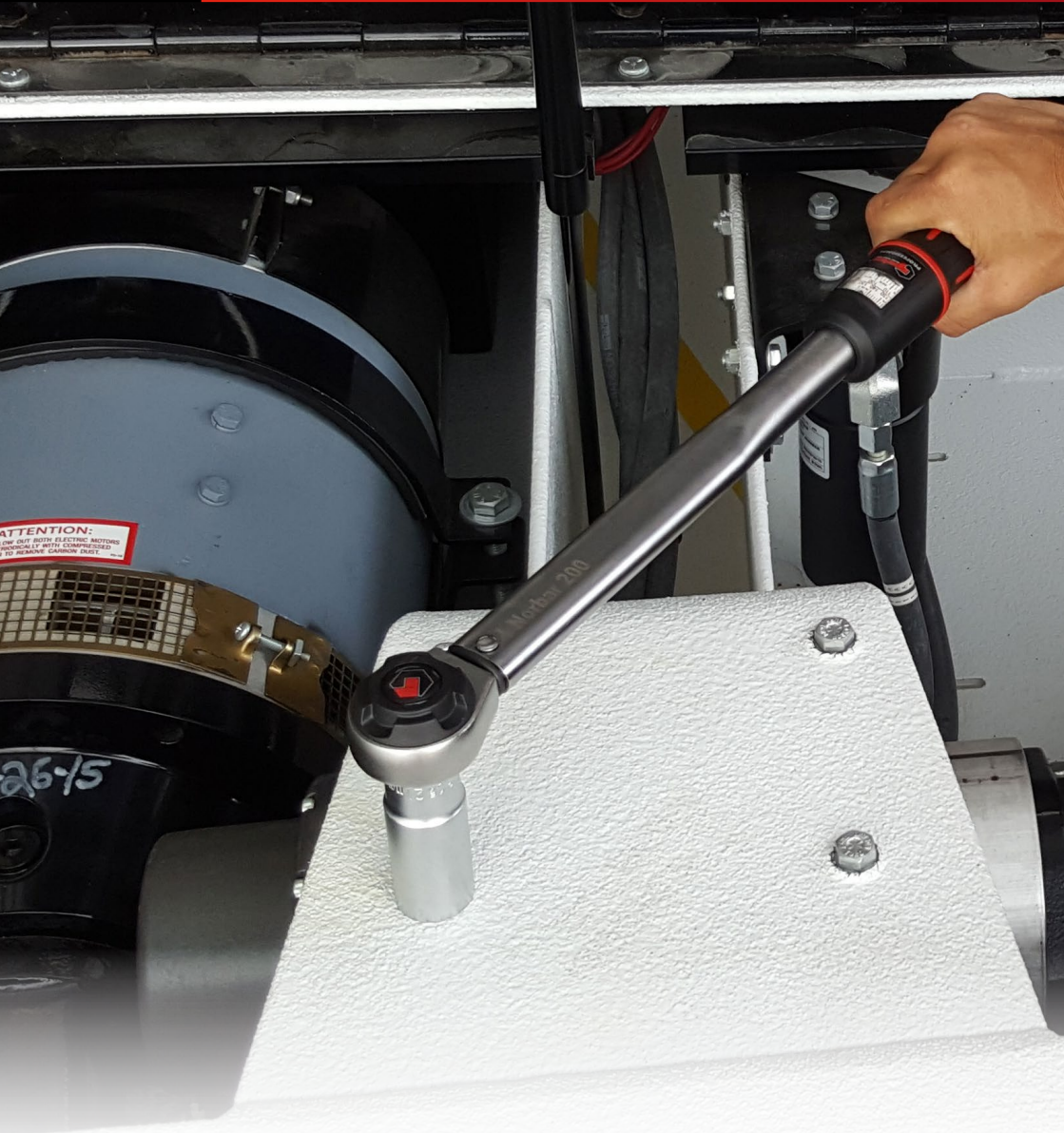
PROFESSIONAL TORQUE WRENCHES SPARES PACKS

10628.PK	Label TimeStrip - Pack of 50
10640.PK	TimeStrip Adhesive Gasket - Pack of 50
11521.PK	Shaped Washer - Pack of 20
11522.PK	End Stop - Pack of 10
15312.PK	End Cap - Pack of 25
25496.PK	SCR:SKT Grub M5 x 6 LG Oval - Pack of 50
25497.PK	SCR:SKT Grub M5 x 5 LG Dog Point - Pack of 50
254100.PK	SCR:SKT Grub M5 x 8 LG Oval Point - Pack of 50
25746.PK	M3 Dog Point Grub SCR - Pack of 50
25938.PK	Washer M4 STD.Flat - Pack of 100
26033.PK	Pivot Pin - Pack of 20
27029.PK	Steel Ball 3.8 mm Dia - Pack of 50
25351.10.PK	SHCS M4 x 10 LG - Pack of 50





MODEL 5 & PROFESSIONAL TORQUE WRENCH SPA





PROFESSIONAL TORQUE WRENCHES SPARES KITS

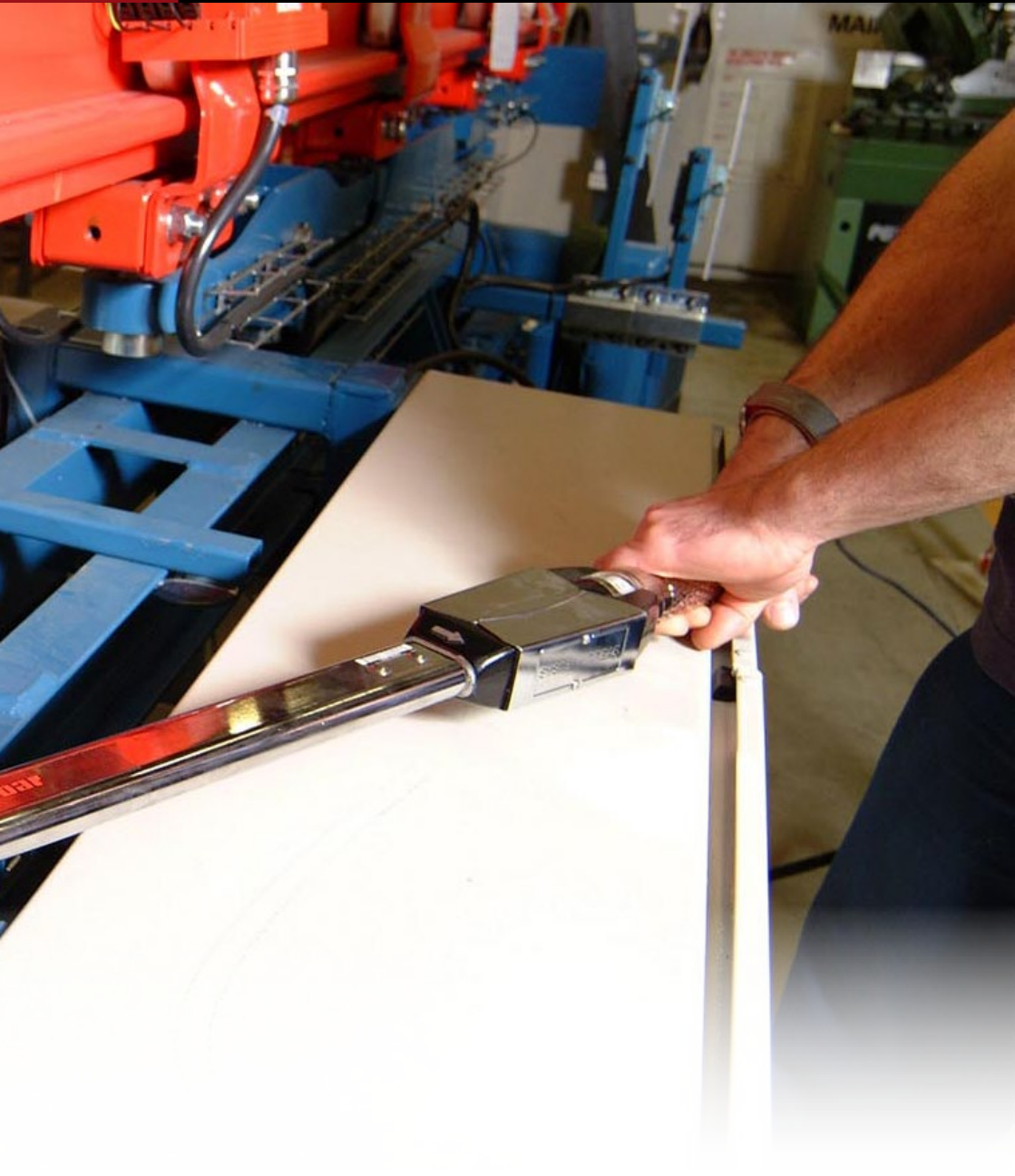
150100.K	Handle Repair Kit
150101.K	Scale Mechanism Repair Kit
150102.K	Locking Knob Repair Kit
150103.K	Thrust Washer and Screw Kit
150104.K	Spring Repair Kit
150105.K	½" sq. dr. Mushroom Kit
150106.K	¾" sq. dr. Mushroom Kit
150112.K	'Industrial Ratchet' Repair Kit, ¾" sq. dr. (Pro 50)
254100.PK	SKT Grub M5 x 8 LG Oval Point - Pack of 50
150113.K	'Industrial Ratchet' Repair Kit, ½" sq. dr. (Pro 100 - 200)
150114.K	'Industrial Ratchet' Repair Kit, ½" sq. dr. (Pro 300 - 340)
150115.K	'Industrial Ratchet' Repair Kit, ¾" sq. dr. (Pro 400)
11598	'Automotive Ratchet' Repair Kit ¾" sq. dr. (Pro 50 & 100)
11618	'Automotive Ratchet' Repair Kit ½" sq. dr. (Pro 50 & 100)
150111.K	'Automotive Ratchet' Repair Kit, ½" sq. dr. (Pro 200)



PROFESSIONAL NLD SERIES TORQUE WRENCH SP

PROFESSIONAL TORQUE WRENCHES NLD SERIES

14195	Ratchet Repair Kit Mdl 550/650 ¾"
14196	Ratchet Repair Kit Mdl 800/1000/1500 ¾"
14197	Ratchet Repair Kit Mdl 800/1000/1500 1"
14162	Ratchet Assembly Mdl 550/650
14163	Ratchet Assembly Mdl 1000
12297	Replacement Square Drive Mdl 550/650 ¾"
12299	Replacement Square Drive Mdl 550 1"
14157	Replacement Square Drive Mdl 800 - 1500 ¾"
14165	Replacement Square Drive Mdl 800 - 1500 1"
14185	Cover Kit for all Models
14218	Secondary Lever and Support Block Assy Upgrade kit for all Models pre 2004/169391
14217	Secondary Lever and Support Block Assy for all Models post 2004/169391
14220	Secondary Lever Assembly
14187	Screw Adjustable Kit for all Models
14166	Calibration Kit 'P' Type for all Models
13242	Rivet Repair Kit





SLIMLINE TORQUE WRENCH SPARES





SLIMLINE TORQUE WRENCHES

11831	Ratchet Repair Kit SLO 1/4" (post Jan 2008)
11832	Ratchet Repair Kit SLO 3/8" (post Jan 2008)
11806	Spares Kit - SLO Adj Knob
11914	3/8" sq.dr for SLO Fixed Head
11762	Rivet Repair Kit



INDUSTRIAL TORQUE WRENCH SPARES

INDUSTRIAL TORQUE WRENCHES

12307	Ratchet Repair Kit Industrial (except 6R & 6R-N)
12373	Ratchet Repair Kit (6R & 6R-N only)
12297	¾" Square Drive Assy for 3AR - 5AR & 3AR-N - 5AR-N
12299	1" Square Drive Assy for 3AR - 5AR & 3AR-N - 5AR-N
18492	1" Square Drive Assy for 6R & 6R-N
12374	1" Square Drive Repair Kit (6R & 6R-N only)
12355	Industrial Thrust Washer Spares Kit
12360	End Caps - Plastic 10 pack (Industrial)
121125	Replacement Rod/Plunger & Nut Assy. for 3AR
121126	Replacement Rod/Plunger & Nut Assy. for 4R
121127	Replacement Rod/Plunger & Nut Assy. for 4AR
121128	Replacement Rod/Plunger & Nut Assy. for 5R
121129	Replacement Rod/Plunger & Nut Assy. for 5AR
121130	Replacement Rod/Plunger & Nut Assy. for 6R
121094	5AR-N Adjusting Nut
121079	6R-N Adjusting Nut

In order for Norbar to supply the correct adjusting nut, we need to know the correct scale length for the tool being repaired. The scale length is denoted by a number on the nut being replaced and will be of the form e.g. 159/60.





CALIBRATION SERVICES

Accredited Calibration Laboratory No. 0256

The hallmark of Norbar's high standard of workmanship is clearly seen in our products. As a manufacturer to have an in-house UKAS accredited calibration laboratory is a source of pride that we still provide the most comprehensive service available.

Norbar's laboratory has approval for torques between 0.005 and 1000 Nm. We set standards for the technical competence of the laboratory. This accreditation, which relates only to a laboratory's quality management systems.





seen in the fact that we were the first torque equipment laboratory. We have no intention of resting on our laurels and take pride in the quality of our products and services, ensuring we evolve to continue to meet your needs.

08,500 N·m and operates to BS EN ISO/IEC 17025:2017, which should not be confused with laboratories claiming ISO 9001



Devices sent in for UKAS accredited calibration certification will be calibrated and the 'As Found' readings recorded. The calibration will be performed to the appropriate standard as specified in our schedule of accreditation.



More info

A calibration 'priority booking' service is available, please contact the Customer Relations Department a minimum of one month prior to the required recalibration due date.

- Tel: +44 (0)1295 753635
- Fax: +44 (0)1295 753636
- Email: service@norbar.com





DECLARATION OF CONFORMANCE

ONE DIRECTION

DOC1.CW	Up to 400 N·m / 300 lbf·ft
DOC2.CW	Up to 1,000 N·m / 750 lbf·ft
DOC3.CW	Up to 1,500 N·m / 1,100 lbf·ft

ONE DIRECTION & REPAIR COMBO

RCDOC1.CW	NorTorque and Professional wrenches up to 400 N·m
RCDOC2.CW	Industrial wrenches 2R - 5R & 3AR-N - 5R-N
RCDOC3.CW	Industrial wrench 5AR & 5AR-N
RCDOC4.CW	Large Professional 550 & 650 N·m
RCDOC5.CW	Large Professional 800 - 1,500 N·m

TWO DIRECTIONS

DOC1.CW+CCW	Up to 400 N·m / 300 lbf·ft
DOC2.CW+CCW	Up to 1,000 N·m / 750 lbf·ft
DOC3.CW+CCW	Up to 1,500 N·m / 1,100 lbf·ft

TWO DIRECTIONS & REPAIR COMBO

RCDOC1.CW+CCW	NorTorque and Professional wrenches up to 400 N·m
RCDOC2.CW+CCW	Industrial wrenches 2R - 5R & 3AR-N - 5R-N
RCDOC3.CW+CCW	Industrial wrench 5AR & 5AR-N
RCDOC4.CW+CCW	Large Professional 550 & 650 N·m
RCDOC5.CW+CCW	Large Professional 800 - 1,500 N·m





ISO 6789-1:2017
(Part 1)



UKAS ACCREDITED CALIBRATION CERTIFICATION



ISO 6789-2:2017
(Part 2)

enquiry@norbar.com | www.norbar.com



Newly Purchased Torque Wrenches

ONE DIRECTION

TWCC4.CW	Up to 400 N·m / 300 lbf·ft
TWCC5.CW	Up to 1,000 N·m / 750 lbf·ft
TWCC6.CW	Up to 3,000 N·m / 2,200 lbf·ft

TWO DIRECTIONS

TWCC4.CW+CCW	Up to 400 N·m / 300 lbf·ft
TWCC5.CW+CCW	Up to 1,000 N·m / 750 lbf·ft
TWCC6.CW+CCW	Up to 3,000 N·m / 2,200 lbf·ft



More info

Previously Purchased Customer Torque Wrenches

ONE DIRECTION

TWCC1.CW	Up to 400 N·m / 300 lbf·ft
TWCC2.CW	Up to 1,000 N·m / 750 lbf·ft
TWCC3.CW	Up to 3,000 N·m / 2,200 lbf·ft

TWO DIRECTIONS

TWCC1.CW+CCW	Up to 400 N·m / 300 lbf·ft
TWCC2.CW+CCW	Up to 1,000 N·m / 750 lbf·ft
TWCC3.CW+CCW	Up to 3,000 N·m / 2,200 lbf·ft



More info

NORTRONIC ONE DIRECTION & ANGLE

NTCC1.CW	NorTronic all sizes
----------	---------------------

NORTRONIC TWO DIRECTIONS & ANGLE

NTCC1.CW+CCW	NorTronic all sizes
--------------	---------------------

CUSTOMER RELATIONS

OFFICE OPENING HOURS

Monday - Thursday 07:30 - 17:30
Friday 07:30 - 16:15

CONTACT DETAILS

New Sales

Direct Tel +44 (0)1295 753600
Email sales@norbar.com

After Sales Service

+44 (0)1295 753635
service@norbar.com

NORBAR PRODUCT PORTFOLIO



Torque Screwdrivers



Torque Wrenches



Electronic Torque Wrenches



Manual Torque Multipliers



Pneumatic Torque Tools



Electronic Torque Tools



Battery Torque Tools



Torque Measurement Instruments



Torque Transducers



Calibration Services