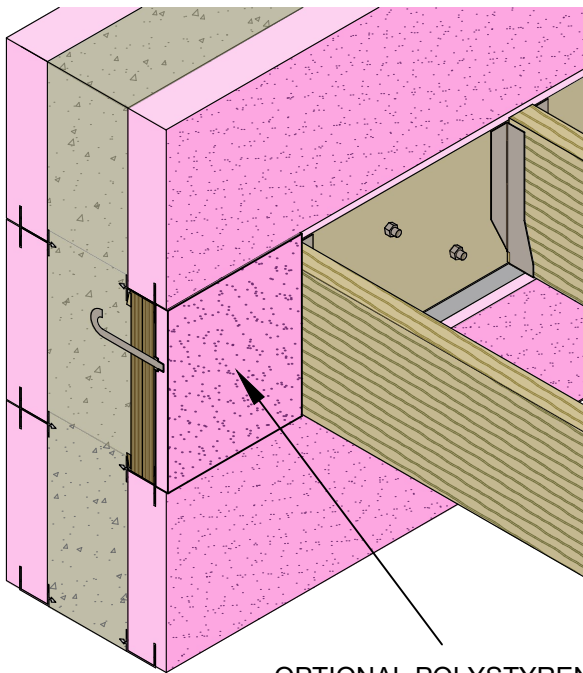
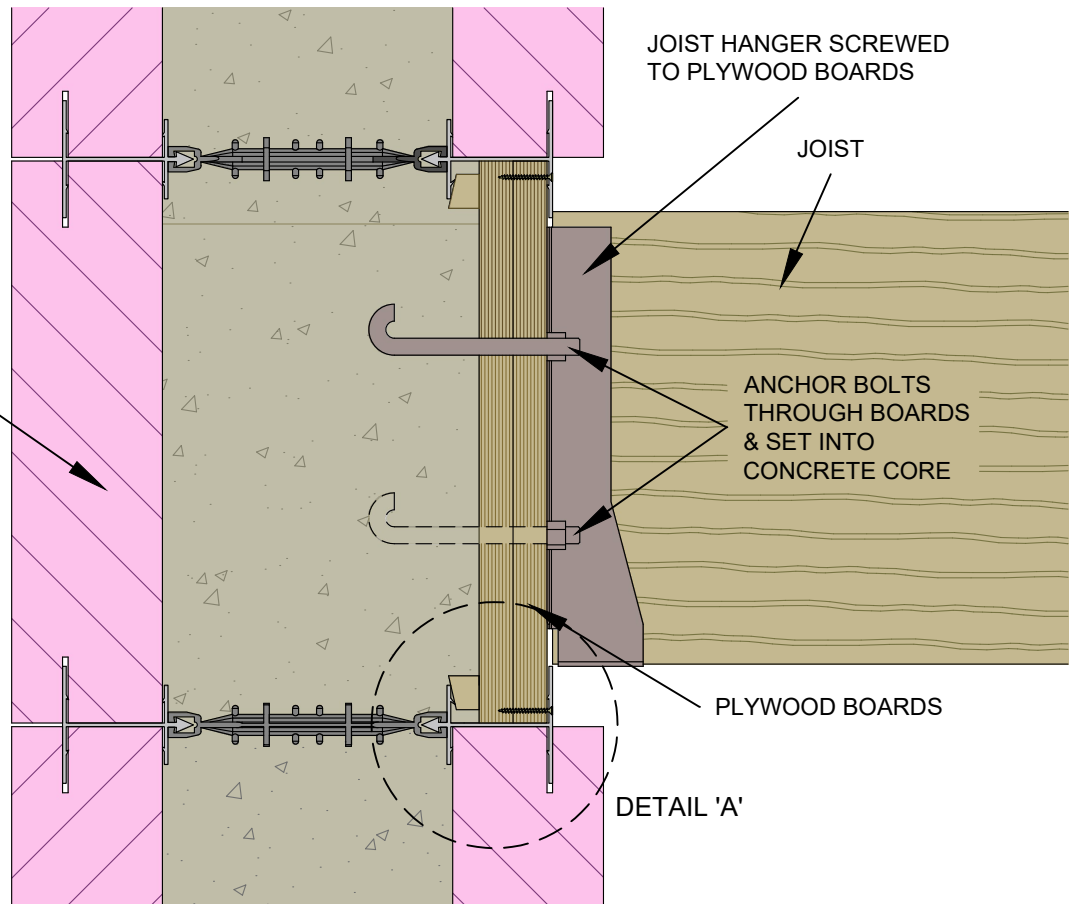


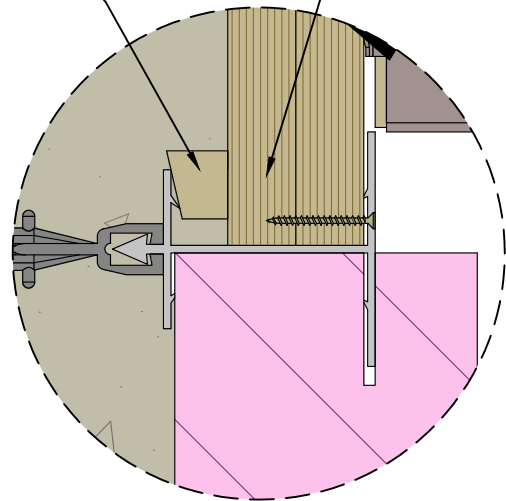
EXTRUDED POLYSTYRENE BOARD TO BE TRIMMED ACCORDINGLY IF PLYWOOD BOARD IS LESS THAN 300mm



OPTIONAL POLYSTYRENE FILLER CAN BE PLACED BETWEEN JOISTS

PLYWOOD BOARDS WITH WEDGES TO PUSH BOARDS TO FRONT OF RAIL.

SCREW INTO WOOD TO PULL BOARD TO FRONT OF RAIL.



DETAIL 'A' SHOWING WEDGE & SCREW

polarwall

4, EXE UNITS
COFTON ROAD
MARSH BARTON
EXETER
EX2 8QW

TELEPHONE 01392 823300

WWW.POLARWALL.CO.UK

TITLE

TIMBER FLOOR WALL PLATE
DETAIL

THIS DRAWING AND THE INFORMATION CONTAINED IN
IT IS © POLARWALL LIMITED 2018.

DRAWN

FWJ SIMPSON

CHECKED

A WHEELER

DATE

06/09/2018

REVISION

0

DRG. No.

C-004