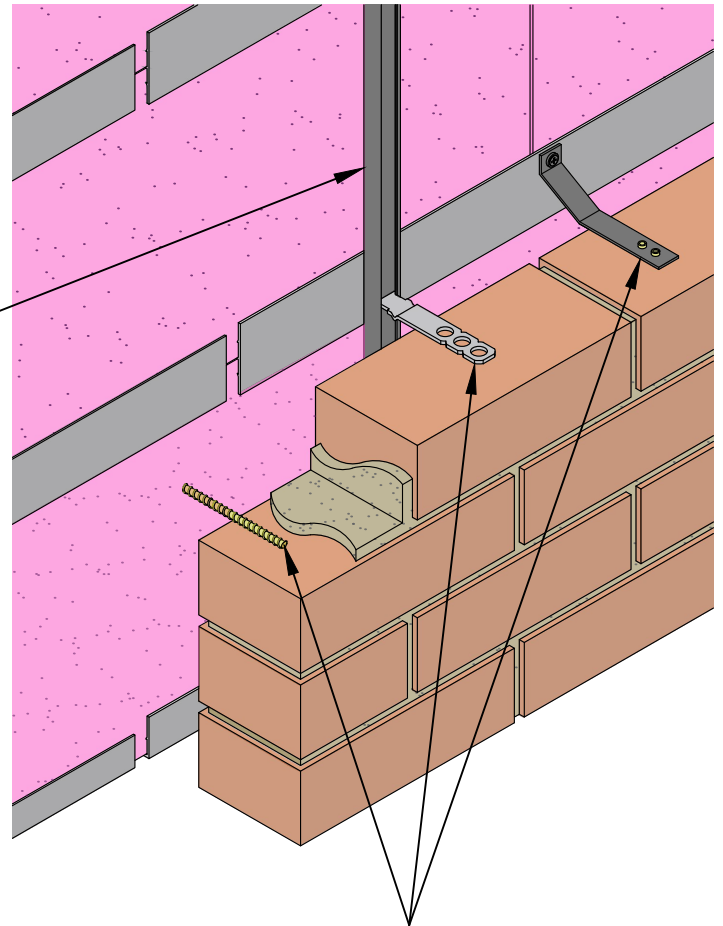


VERTICAL STAINLESS
STEEL C-SECTIONS
(E.G. ANCON 25/14)
SCREWED INTO H-RAILS
IN SEVERAL PLACES
ON EACH COURSE

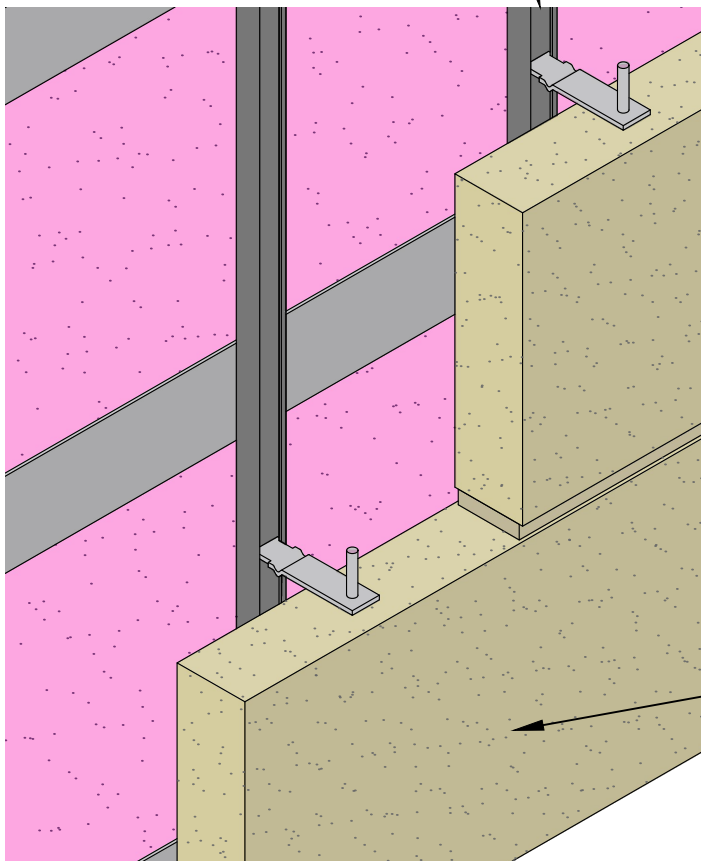


FOR BRICK OR STONE A VARIETY OF
METHODS MAY BE USED. SEEN HERE
(FROM LEFT TO RIGHT):

~HELICAL SCREW (SCREWED INTO
CONCRETE CORE SO CAN BE PLACED
ANYWHERE)

~SLIDING WALL TIES IN C-SECTION RAIL

~FRAMING TIE SCREWED TO PLASTIC
H-RAILS (OR CONCRETE IF NECESSARY)



FOR AN ASHLAR CLADDING
DOWELS ARE USED WITH
PRE-DRILLED HOLES IN THE
STONE

polarwall

4, EXE UNITS
COFTON ROAD
MARSH BARTON
EXETER
EX2 8QW

TELEPHONE 01392 823300

WWW.POLARWALL.CO.UK

TITLE

COMMON METHODS OF
ATTACHING MASONRY
CLADDING TO POLARWALL

THIS DRAWING AND THE INFORMATION CONTAINED IN
IT IS © POLARWALL LIMITED 2018.

DRAWN
FWJ SIMPSON

CHECKED
A WHEELER

DATE
11/09/2018

REVISION
0

DRG. No.
B-002