



SUNBELT[®]
RENTALS

SURVEY



WE ARE AN INDUSTRY-LEADING SUPPLIER OF LAND SURVEY AND PRECISION MEASUREMENT TECHNOLOGIES, BASED IN THE UK.



We hire and sell new and reconditioned equipment and provide comprehensive servicing, training and technical support.

We help customers like you across a range of industries including Construction, Archaeology, Utilities and Education. Our people are some of the most knowledgeable specialists in the industry, so we provide a technical support line to answer any questions you have.

We offer a large range of precision survey equipment, including Total Stations, 3D Laser Scanners, UAV's, Theodolites, GPS Surveying Equipment, Construction Lasers, Levels, Utility Detectors, Safety and Used Survey Equipment.

You can depend on us for properly serviced and inspected equipment. We're a fully accredited authorised distributor and service partner of Leica Geosystems, and a channel distribution partner of both FARO Technologies and SPX Radiodetection.

opti:cal
Survey Equipment

Opti-cal
Survey Equipment
are now
Sunbelt Rentals Survey



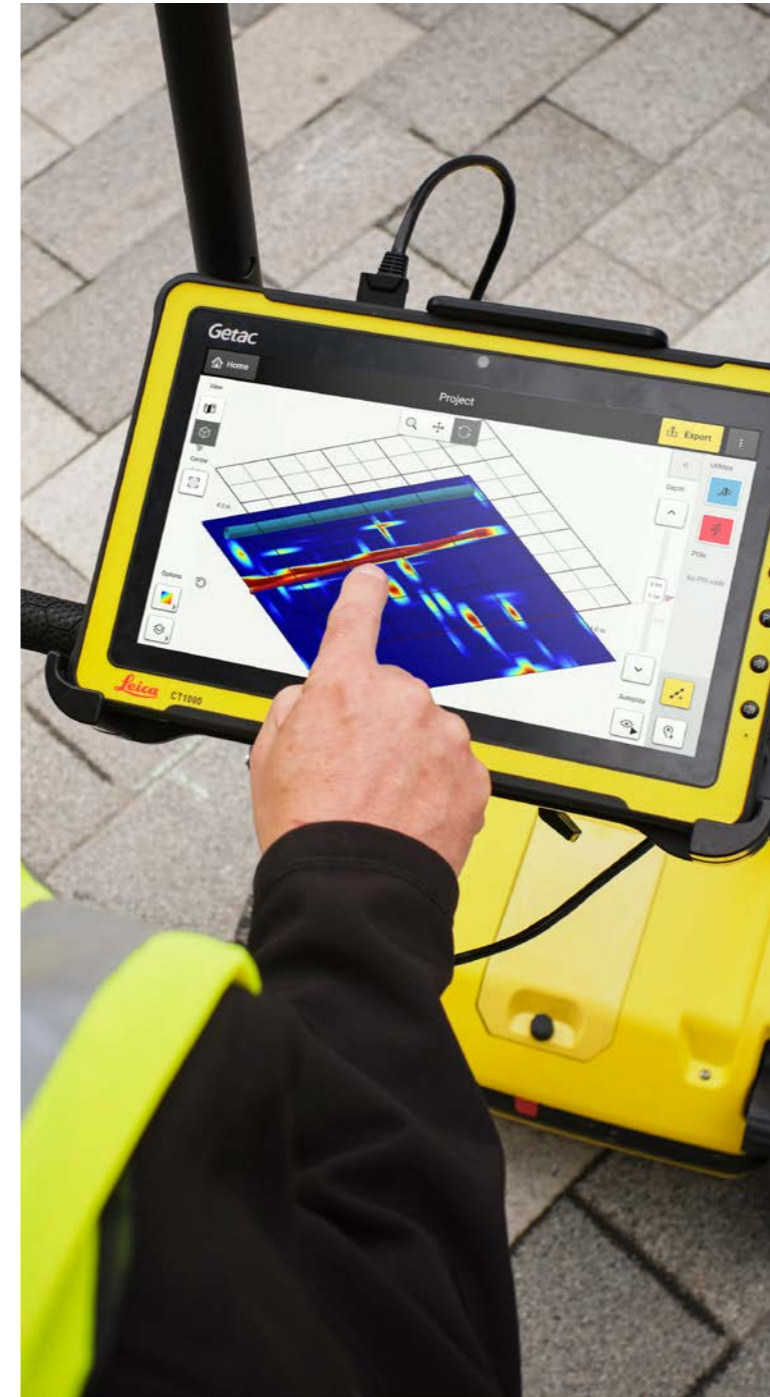


SERVICING, CALIBRATION AND REPAIRS

We are a fully accredited authorised service and distribution partner of Leica Geosystems. This means that we can offer full instrument calibration, servicing and repairs on a wide range of Leica equipment.

Our service technicians are trained to the highest standards and undertake regular professional training on a wide range of our equipment, across many manufacturers.

We understand how inaccurate instruments can affect your work, and how regular maintenance for your equipment can ensure your instruments are performing accurately and reliably. We would be very pleased to book in your instruments for scheduled maintenance.



TECHNICAL SUPPORT

We believe that your level of technical expertise should not be a limiting factor in what you can achieve within your projects. Accessibility is important, so we provide you with all the documentation and software you need to get started.

Our equipment specialists are experienced in supporting everyone from absolute beginners to certified technical experts and can guide you through your project from initial point of contact, all the way through to project completion.

Our experts can support across all of our product range. If you would like to speak to one of our technical support team, please call the number below.

**Dedicated Technical Support Number:
01293 565 565**

TRAINING

We understand that training and expert technical support are both vital to unlocking the full potential of your survey equipment. We offer structured training programs that enable you to stay up to date with the latest advances, take full advantage of equipment capabilities and help to improve workflow.

We offer courses on a wide range of our products, including Total Stations, Laser Scanners, GNSS Systems, Digital Levels and Cable Avoidance to ensure your employees are trained, developed, and supported. We also offer Machine Control Simulator training at our training centres.

All published courses can be customised, allowing you to get the most from your training investments. Choose between training on-site, at your office or our locations. Alternatively, let us know your training requirements and we will do our best to accommodate.

**Dedicated Technical Support Number:
01293 565 565**





CASE STUDY

BALFOUR BEATTY TRAINING WORKSHOP

As a tier 1 approved supplier to Balfour Beatty for surveying equipment, Sunbelt Rentals Survey work closely with Balfour Beatty. We don't just supply them with product, we also provide training on our instruments, helping to improve productivity in the field. We regularly attend innovation days arranged by Balfour Beatty to showcase our range of equipment and provide insight into our instruments and provide training for their employees.

Our workshops with Balfour Beatty are designed to benefit all engineers, including graduates, trainees, site Engineers, section and senior engineers. When looking at innovative and cost-effective setting out and surveying solutions, our workshops also benefit site managers, project managers and quantity surveyors.

It began with a survey sent to Balfour Beatty engineers in the southern region asking them about the type of products they would be interested in learning more about and resulted in a workshop tailored specifically to their responses, whilst also covering a wider scope to ensure well-rounded knowledge.

The workshop included presentations concerning:

- The use of total stations and GPS equipment
- Machine control
- 3D laser scanning, mounted and handheld
- Different types of drone equipment and UAV surveying techniques
- Solving earthworks volumes and recording progress using drones and photogrammetry
- Viva and Captivate instrument software
- Desktop software
- Survey monitoring equipment and solutions

We provided a range of kit including the latest digital levels, total stations, GPS receivers and controllers. Where possible, there was one piece of equipment available for each Engineer that attended, so everyone could get the most out of the session.

Practical demonstrations and training in the classroom and outdoors included:

- Uploading, downloading and backing-up data from instruments
- Time-saving shortcut keys on instruments and controllers
- Using the latest GPS rover equipment and software
- A comparison demonstrating the increased efficiency of the new GPS equipment

A great many benefits were gained from this workshop. Engineers and survey equipment hirers grew their understanding of the equipment available for a project and therefore can make cost savings based on their correct choice of equipment.

With the extra training, the engineers learned more efficient ways of using the equipment, which can result in increased productivity on site. Getting to meet our training team face to face makes those on-site technical issue phone calls easier, and existing technical and equipment use issues were resolved with a question and answer session.

Goody bags were given to each participant, which included promotional items alongside useful items for the Engineers to use in their everyday jobs. They also included personal USB sticks to each Engineer for uploading and downloading survey information, which also contained a wealth of equipment information and contact information to act as support when they need it.

Feedback from this workshop was extremely positive - even the most experienced Engineers commented on how much they learnt on the day.

MACHINE CONTROL SOLUTIONS

The use of Machine Control is growing among contractors who realise the need for greater productivity on work sites when excavating, grading, dredging or piling.

Machine Control improves efficiency, accuracy and productivity whilst reducing need for time-consuming and costly re-engineering works. The number of people needed to be around the machine is also reduced, making it much safer.

Accuracy is improved when the solution is placed directly on the machine, which helps operators move earth faster and for longer. Operating costs are in turn lowered as machinery is on site for less time.

We provide you with a complete machine control solution from initial consultation through to installation, training and technical support.

Sunbelt Rentals Survey are the most up-to-date Hire Fleet of Machine Control equipment. Our range includes Leica, Topcon and Trimble machine control solutions that you can hire or buy.





3D LASER SCANNING

Laser Scanning is an increasingly popular tool for collecting vast amounts of accurate spatial data within a short amount of time. This makes laser scanners a popular piece of equipment within surveying, film and archaeology companies where on site time may be restricted.

Mobile Mapping equipment uses laser scanning technology to capture Survey Grade 3D point clouds and calibrated 360° imagery while travelling. Mobile mapping allows land surveyors to survey roads and difficult to reach areas quickly and without interrupting day-to-day life. These devices can be mounted to vehicles and are available as backpacks or as handheld devices.

AIRBORNE SURVEYING

The use of Unmanned Aerial Vehicles (UAV's) to carry out survey and inspection work has become increasingly widespread due to significant advances in UAV and photogrammetry technology.

The range and specification of cameras and sensors available has risen along with payload capacity. Improved photogrammetry software allows the images to be processed into orthomosaic photographs and digital terrain models. UAV's have applications for large scale mapping projects, building inspections, stockpile monitoring, search and rescue and erosion monitoring, and much more.

We have the knowledge and skills to be able to support your entry into the world of Aerial Survey work. We can advise you which UAV and sensors you will need for your work and provide full training and support when it comes to processing your data into 2D and 3D models.

To legally fly a small unmanned aerial system in the UK the Operator is legally required to hold a Permission for Commercial Operations (PfCO) from the UK Civil Aviation Authority (CAA). Before a PfCO is issued the Operator must write and have approved an Operations Manual. Also any pilots who are to fly for that Operator must hold a CAA approved NQE issued qualification demonstrating their operating competence and flying capability.





TOTAL STATIONS

17

Offering a complete site solution, Total Stations allow professionals of all technical abilities to perform accurate, efficient measurements with minimal fuss.

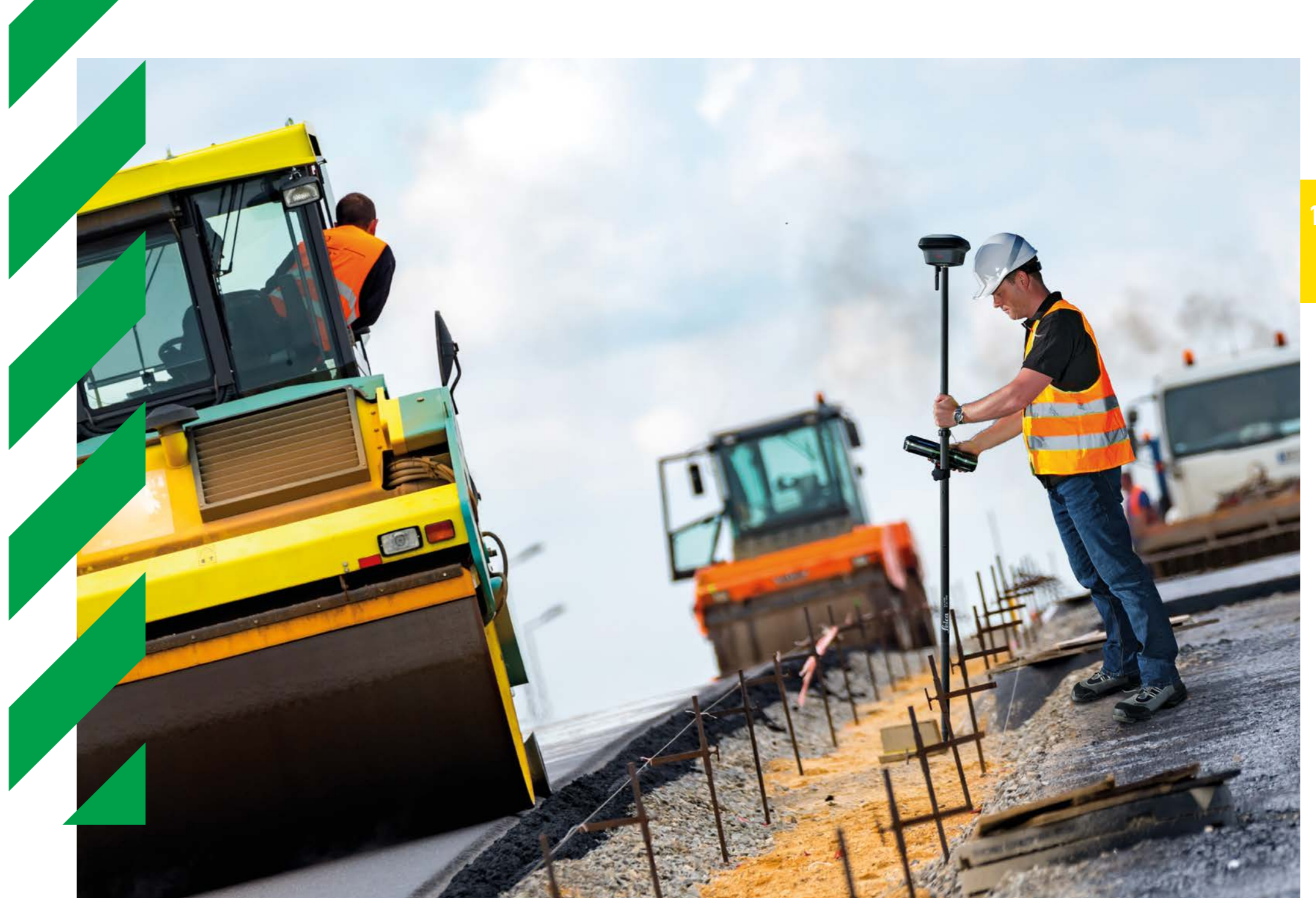
Take advantage of a range of accurate and reliable Total Stations, equipped with unsurpassed angle, distance and reflectorless technology, and with a powerful suite of onboard programs makes any surveying task easy.

We offer a full range of models to suit all levels of project requirements – from manual total stations to robotic one-man kits.

GNSS SYSTEMS

GNSS surveying systems combine state-of-the-art technology with powerful data management capability to receive and process satellite signals for highly accurate geographic positioning.

Leica GNSS is a complete range of versatile solutions that offers both fully integrated and totally modular systems. To provide ultimate flexibility, the Leica Viva range takes advantage of four major satellite constellations: GPS (American), GLONASS (Russian), Galileo (European) and BeiDou (Chinese).





LASERS

Construction lasers, single or dual grade lasers, line and dot lasers, pipe lasers - we offer the full range of construction and civils lasers for use across a diverse range of applications and industries.

These instruments have aided in the success of ventures in construction, utilities, interior fittings and many other sectors, increasing productivity and aiding the efficiency of workflows to deliver projects on time and to specification.

Recent developments have seen the introduction of upgradeable rotating lasers, allowing the capability to adapt to any application need through software upgrades.

LEVELS

We stock the most comprehensive range of surveying levels available on the market today in order to give you the widest choice when it comes to selecting the right instrument for your project. We offer Leica Geosystems automatic (optical) levels, dumpy levels and precise levels, all at extremely competitive prices – and with their ease of use there is no need to spend significant time in training.





DETECTION

Whether you are looking for Cable Avoidance or Precision Location equipment, we have a wide range of instrument options to suit your project needs. As a partner of SPX Radiodetection, we stock high quality CAT and Genny cable and pipe avoidance kits that are crucial to a wide range of excavation work, ensuring maximum site safety for ground workers.

We stock a comprehensive range of ground penetrating radar and detection equipment.

HISTORIC ENGLAND

Historic England are the public body that helps care for and celebrate England's historic places including buildings, sites and monuments.

THE CHALLENGE

Historic England wanted to have a day where their decision-makers and end-users could get up to date with the latest in survey equipment and techniques specifically for their sector. It was designed to enable them to network with other people in the sector, allowing them to share knowledge. Our ties within the Heritage and Archaeology sector, as well as our excellent product knowledge, made us the perfect candidates to set up a demonstration day with.

THE SOLUTION

The Heritage Open Day was planned. The day was planned in conjunction with the National Trust and was held at Fountains Abbey in North Yorkshire, a monastic ruin and world heritage site, complete with lecture theatre and cafe facilities.

The event was designed to only include equipment that the Heritage and Archaeology sector would find useful.

The morning consisted of lectures given by experts from Historic England and the National Trust, alongside presentations given by our product specialists, and from supplier GeoSLAM. All lectures were directed at the end-user Archaeology and Heritage audience, giving context and clarity while explaining exactly how they could achieve the best quality data outputs.

After lunch, the winner of the prize draw was announced and then the group were led to the demonstrations, which began with the flight of a WingtraOne, a vertical take-off and landing UAV.

The day was concluded in an outdoor demonstration area right next to the ruins, where many products were on display and our product experts were available to speak to. Those products included Ground Penetrating Radar, Total Stations, Mobile Mapping Systems, GNSS, Laser Scanners and Laser Measures.

THE RESULTS

The day was very well received by both the customer and the attendees. "I thought the programme worked very well indeed and provided a lot of information and 'food for thought' on what geospatial survey can offer the heritage sector these days. I personally learned a lot today, from the quality and quantity of data that can be captured for a heritage site within only a few hours to the application of GPR technology for adding a 'beneath the surface' layer of information. I thought this was an excellent presentation and pitched at just the right level for such a mixed audience." Paul Bryan, Geospatial Survey Manager for Historic England. We surveyed the attendees of the event, and the results were very positive. Over 90% of the attendees rated the event very good and excellent. 75% said that the event was very organised, with the other 25% saying it was extremely organised. When attendees were asked if they would attend one of our events in the future, 83.3% said they would be likely or extremely likely to do so. The lectures were the best received part of the day, being described as "informative, concise, [and] a good length." The demonstration part of the day also had good feedback from attendees, with one person saying: "There was a good variety of different technology available to view [and] the team were very helpful."



0370 050 0792
www.sunbeltrentals.co.uk