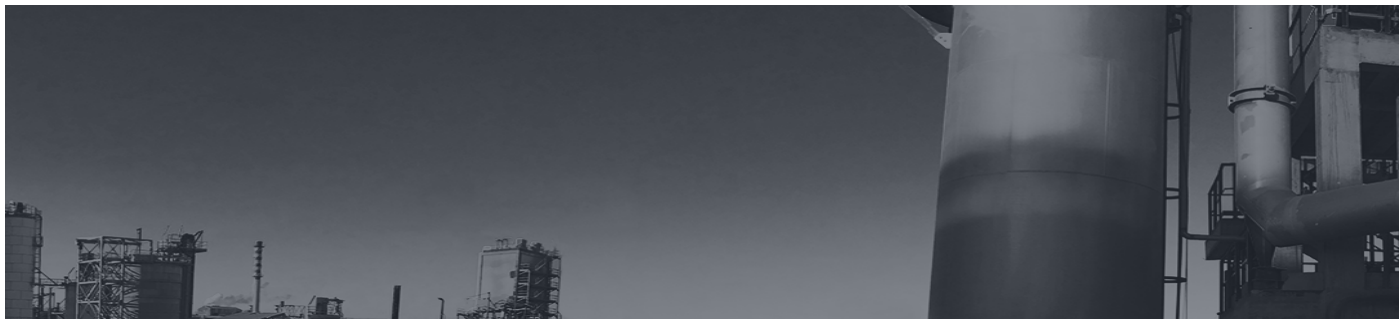




BEGG COUSLAND ENVIROTEC LTD.

Pulp & Paper Industry › Evaporator & Scrubber Exits



PROCESS INFORMATION

In Pulp & Paper plants there are various applications for Chevron Vane, BlueFil® Structured Thermoplastic Meshpad or Knitted Wire Demister droplet separators to prevent liquid carry over from an evaporator or scrubber tower, or to recover chemicals used in the pulping process – e.g.

- Bleaching Plant Scrubber
- Black Liquor Evaporator
- Chlorine Dioxide Absorber
- Evaporator Cooling Tower

These scrubbers and absorbers are installed to absorb the noxious gases that would pollute the air if emitted to atmosphere, and they can also capture solid matter that needs to be prevented from causing pollution. They use a contact liquid which can be entrained with the exiting gas. Packed beds of saddles can be replaced with BlueFil® in some absorbing tower duties, with better results.

Evaporators use steam as the heat source, multiple effect in series, and want to improve the purity of the steam condensate emitted. Cooling Tower emissions can also be improved.

PROBLEMS TO SOLVE

- Air pollution
- Steam condensate purity



BEGG COUSLAND ENVIROTEC LTD.

DESIGN SOLUTIONS

1. Becovane STV series Chevron Vane pack in horizontal or vertical orientation.
2. Becovane DPV series Chevron Vane pack in vertical orientation.

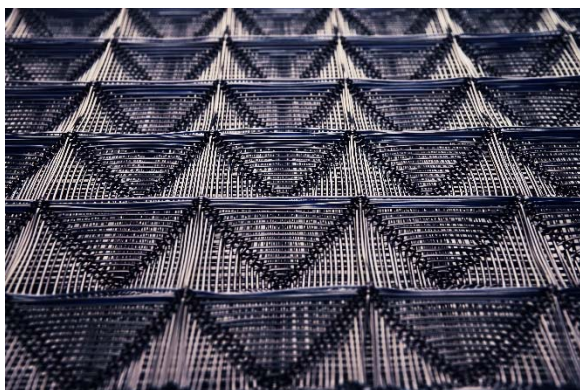


Becovane STV Style

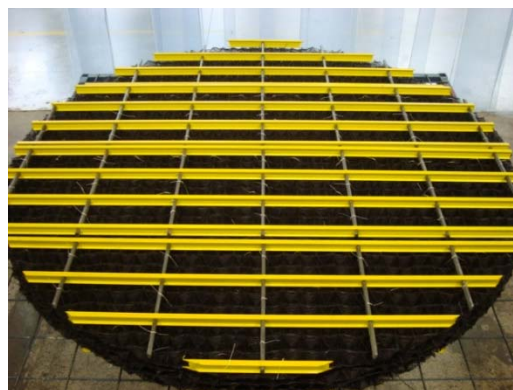


Becovane DPV Style

3. Benvitec 'BlueFil®' thermoplastic meshpad in horizontal or vertical orientation



BlueFil® MX095 Mesh in PP



BlueFil® Horizontal Pad & Grids

4. Becoil Knitted Wire demister in horizontal orientation.

Please contact us for further information or to request a visit or proposal.