



 **Vital-Parts**
We mould around you

The Vital Parts
Product Brochure



At Vital Parts Ltd we aim to provide a professional, stress free experience through a selection of top quality industrial products and an easy to use website.

It is our attention to detail and exemplary customer service that has proved to be the defining characteristic for our operations, and is why we have adopted the slogan, **we mould around you.**

“I was impressed by the massive range of products available on the easy to follow website, delivery was prompt the day after dispatch, and all the parts ordered arrived in good condition, well labelled and of high quality. I will definitely use this company again.” ~ G. Alker

- ✓ Over 1,000,000 Parts In Stock
- ✓ Fast, Friendly, Efficient Service
- ✓ Next Day Delivery Available
- ✓ Trusted By FTSE 100 Companies





End Caps



Plugs & Stoppers



Furniture & Chair Feet



Tube Inserts



High Temp Masking



Adjustable Feet



Cable Management



Fixings & Fasteners



Edging Strips



Bushes, Spacers
& Washers



Gaskets & Rubber
Seals



Industrial Hardware



Knobs, Grips &
Handwheels



Pipe & Flange
Protection



Scaffold Protection

End Caps or 'covers' are versatile products coming mainly in **Plastic & Rubber** styles, designed for **Finishing, Masking, Protection and Sealing**. Manufactured with both industrial and household uses in mind, you can rest assured we have a cap that meets your needs.



Size	mm	cm	Inches
M5	5	0.5	0.19
M6	6	0.6	0.23
M8	8	0.8	0.31
M10	10	1.0	0.39
M12	12	1.2	0.47
M14	14	1.4	0.55
M16	16	1.6	0.62
M18	18	1.8	0.70
M20	20	2.0	0.78



Silicone Caps



PVC Caps



EPDM Caps



Nut Caps



Secure Nut Caps



Screw Caps



Tapered Caps



Threaded Caps



Threaded Sealing Caps



Rebar Safety Caps



Pull Tab Caps



Grease Nipple Caps



Heatshrink Caps



Post Caps



Pipe Caps

Silicone Caps (315°C)

Round Silicone Caps

Product Code: **SIC**

0.89mm - 53.47mm

- ✓ High temperature resistant up to 315°C
- ✓ Flexible for quick and easy installation
- ✓ Perfect for all masking purposes
- ✓ Resistant Silicone Rubber



Silicone Cone Caps

Product Code: **SCC**

3.3mm - 16mm

- ✓ High temperature resistant up to 315°C
- ✓ Caps to protect an object / thread
- ✓ Durable, can use multiple times
- ✓ Resistant Silicone Rubber



Silicone Eze Caps

Product Code: **EZE**

6mm - 21mm

- ✓ High temperature resistant up to 315°C
- ✓ Cost effective covering solution
- ✓ Flange for ease of removal
- ✓ Resistant Silicone Rubber



PVC Caps

Round PVC Caps

Product Code: **CAP**

2.8mm - 200mm

- ✓ Manufactured using a premium form of PVC
- ✓ Comes with a glossy finish as standard
- ✓ Ideal for protection during transport
- ✓ Shock absorption properties



Square PVC Caps

Product Code: **SCAP**

10.7mm - 60mm

- ✓ Manufactured using a premium form of PVC
- ✓ Comes with a glossy finish as standard
- ✓ End caps for general protection uses
- ✓ Shock absorption properties



Rectangular PVC Caps

Product Code: **RCAP**

3mm - 40mm

- ✓ Manufactured using a premium form of PVC
- ✓ Comes with a glossy finish as standard
- ✓ Perfect grip for rectangular bars
- ✓ Pad printing compatible



Pull Tab PVC Caps

Product Code: **PTC**

3.6mm - 41.3mm

- ✓ Manufactured using a premium form of PVC
- ✓ 'Pull' tab for quick and easy removal
- ✓ Multiple resistive properties
- ✓ Ideal for thread protection



High Temp PVC Caps

Product Code: **HCAP**

2mm - 50.8mm

- ✓ Manufactured from a high temperature PVC
- ✓ High temperature resistant up to 210°C
- ✓ For use in high temp environments
- ✓ Bright Yellow finish



Stud PVC Caps

Product Code: **CAP**

3.8mm - 11.9mm

- ✓ Manufactured using a premium form of PVC
- ✓ Metric and imperial standard sizing
- ✓ Covers for exposed threads / studs
- ✓ Glossy Black finish



EPDM Caps

Product Code: **EPC**

0.89mm - 53.47mm

- ✓ Manufactured from a high grade EPDM
- ✓ High temperature resistant up to 230°C
- ✓ Resistant to acids and alkali's
- ✓ Versatile, can be stretched



EPDM Eze Caps

Product Code: **EZE**

7.2mm - 36mm

- ✓ Manufactured from a high grade EPDM
- ✓ High Temperature resistant up to 230°C
- ✓ Resistant to acids and alkali's
- ✓ Ribbed for tight fitting



Nut Caps

Product Code: **NC**

M4 - M24

- ✓ Manufactured from strong and reliable LDPE
- ✓ Strong resistive properties, UV resistant
- ✓ Made to fit industry standard nuts
- ✓ Covers for nut and bolt heads



Secure Nut Caps

Product Code: **SNC**

M6 - M12

- ✓ Manufactured from a strong Polypropylene
- ✓ Ideal for use with inside playgrounds
- ✓ Locking covering cap included
- ✓ Available in 5 colours



Screw Caps

Product Code: **CAP**

6 to 8 - 10 to 12

- ✓ Manufactured from a strong Polypropylene
- ✓ Comes with matching washers
- ✓ Easily cover screw heads
- ✓ Available in 10 colours



Tapered Caps

Product Code: **TAC**

3mm - 263 mm

- ✓ Manufactured from a strong and reliable LDPE
- ✓ Reversible cap / plug to protect or cover
- ✓ Built in flange around its head
- ✓ Huge selection of sizes



Threaded Caps

Product Code: **THC**

Metric/BSP/UNF

- ✓ Manufactured from a strong and reliable LDPE
- ✓ Ergonomic head for easy removal
- ✓ Easily protects exposed threads
- ✓ Screw on installation



Threaded Sealing Caps

Product Code: **THC**

Metric/BSP/UNF

- ✓ Manufactured using a strong form of HDPE
- ✓ Built in Neoprene disc for sealing
- ✓ To protect exposed threads
- ✓ Ideal for fluid or gas uses



Rebar Safety Caps

Product Code: **SAFE**

8mm - 50mm

- ✓ Manufactured from a strong and reliable LDPE
- ✓ Used to cover exposed poles / rebar
- ✓ Temperature and UV Resistant
- ✓ Industry standard sizes



Grease Nipple Caps

Product Code: **GNC**

6mm

- ✓ Manufactured from strong and reliable LDPE
- ✓ Easily fits over grease nipple
- ✓ Prevents build up of debris
- ✓ Industry standard design



Heat Shrink Caps

Product Code: **HSC**

12mm - 160mm

- ✓ Made from durable Polyolefin
- ✓ Good resistive properties
- ✓ Ideal for repairing cables
- ✓ Shrink to fit caps



Post Caps

Product Code: **POST**

60mm - 273mm

- ✓ Available in both LDPE and PVC styles
- ✓ Caps to protect an internal section
- ✓ Great for finishing off post ends
- ✓ Grey finish from standard



Pipe Caps

Product Code: **PIP**

37.7mm - 1642mm

- ✓ Manufactured from a resistant Polyethylene
- ✓ Easily fits over the face and lip of a pipe
- ✓ Ribbed for a tight and secure fitting
- ✓ Covers and protects against ingress



Plugs & Stoppers come in many shapes, types and sizes each designed for a selection of uses including **Masking, Sealing & Protection**. Manufactured from **high strength, resilient** materials we've carefully selected our range based on feedback from our customers.



Uses	Silicone	EPDM	PVC	Nylon	LDPE	HDPE
Masking	✓	✓	-	✗	✗	✗
Finishing	✗	✗	✓	✓	✓	✓
Protection	-	-	✓	✓	✓	✓
Sealing	✓	✓	✗	✗	✗	✗



Silicone Plugs



EPDM Tapered Plugs



Blanking Plugs



Door Stoppers



Tapered Plugs



Flanged Barrel Plugs



Threaded Plugs



Threaded Sealing
Plugs



Pipe End Plugs



Fir Tree Plugs



Finned Hole Plugs



Snap Fit Plugs

Silicone Plugs (315°C)

Silicone Tapered Plugs

Product Code: **STP**

0,8mm - 127mm

- ✓ Manufactured from a high grade of Silicone
- ✓ Easily seals and protects excess holes
- ✓ Durable, can be used multiple times
- ✓ Tapered to fit a range of widths



Silicone Ribbed Plugs

Product Code: **SRP**

2mm - 32mm

- ✓ Manufactured from a high grade of Silicone
- ✓ To mask off and protect threaded holes
- ✓ Durable, can be used multiple times
- ✓ Ideal for high temperature masking



Silicone Plugs With Handle

Product Code: **STPH**

4.8mm - 56mm

- ✓ Manufactured from a high grade of Silicone
- ✓ Handle for easy removal / installation
- ✓ Useful alternative to standard plugs
- ✓ Plugs to mask off and cover holes



Silicone Pull Plugs

Product Code: **SPP**

1.6mm - 25.9mm

- ✓ Manufactured from a high grade of Silicone
- ✓ Ideal for high temperature Masking
- ✓ Large selection of colours available
- ✓ Pull tab for efficient removal



Silicone Washer Plugs

Product Code: **SWP**

6.4mm - 24mm

- ✓ Manufactured from a high grade of Silicone
- ✓ Excellent for high temperature masking
- ✓ All in one plug and washer
- ✓ Comes in a natural finish



EPDM Tapered Plugs

Product Code: **ETP**

1.6mm - 127mm

- ✓ Manufactured from resilient EPDM
- ✓ Temperature resistant up to 215°C
- ✓ Able to provide an air tight seal
- ✓ Tapered to fit range of sizes



Door Stoppers

Product Code: **SCOF**

15.9mm - 35mm

- ✓ Manufactured from durable Rubber or TPR
- ✓ Counter sunk 'hidden' screw head design
- ✓ Prevents damage to walls and doors
- ✓ Perfect for absorbing shock



Tapered Plugs

Product Code: **TAP**

2.9mm - 298mm

- ✓ Manufactured from strong and reliable LDPE
- ✓ Reversible plug / cap to protect or cover
- ✓ Resistant against acids and alkalis
- ✓ Huge selection of sizes



Flanged Barrel Plugs

Product Code: **BAP**

2.1mm - 85mm

- ✓ Manufactured from a strong and reliable LDPE
- ✓ Flanged for easy installation and removal
- ✓ Acid and alkali resistant
- ✓ Great for sealing



Flexible Blanking Plugs

Product Code: **BLA**

4.7mm - 51.5mm

- ✓ Manufactured from both PVC or TPE
- ✓ Acid and temperature resistant
- ✓ Flexible for ease of fitting
- ✓ Versatile component



Body Plugs

Product Code: **BLA**

10mm - 45mm

- ✓ Manufactured from a premium TPR
- ✓ Temperature resistant up to 135°C
- ✓ Tapered shank for easy fitting
- ✓ Provides a clean finish



Domed Blanking Plugs

Product Code: **BLA**

4.8mm - 51mm

- ✓ Manufactured using a heat stabilized Nylon
- ✓ Available in Black or White finishes
- ✓ Built in fixing clips, locks into place
- ✓ Thin domed head



Vent Plugs

Product Code: **BLA**

22.2mm - 25.4mm

- ✓ Manufactured using a heat stabilized Nylon
- ✓ Temperature resistant up to 160°C
- ✓ Built in fixing clips for easy fitting
- ✓ Ideal for ventilation systems



Threaded Plugs

Product Code: **THP**

Metric/BSP/UNF

- ✓ Manufactured from a durable Polyethylene
- ✓ Screw in thread protection solution
- ✓ Protects internal threads
- ✓ Ergonomic head



Threaded Sealing Plugs

Product Code: **THP**

Metric/BSP/UNF

- ✓ Manufactured from a strong form of HDPE
- ✓ Useful with oils, liquids and gases
- ✓ Built in Nitrile O-Ring for sealing
- ✓ Provides a high quality seal



Fir Tree Plugs

Product Code: **FTP**

3mm - 10mm

- ✓ Manufactured from a strong Nylon 6/6
- ✓ Durable and long lasting solution
- ✓ Locks panels into place
- ✓ One way barbed



Snap Fit Plugs

Product Code: **SFP**

M10 - M42

- ✓ Manufactured from a strong LDPE
- ✓ Easy to install and remove
- ✓ For filling in excess holes
- ✓ Ergonomic design



Washer Masking Plugs

Product Code: **WMP**

3.2mm - 47mm

- ✓ Manufactured from high quality TPR
- ✓ Temperature resistant up to 125°C
- ✓ Masks off hole and washer area
- ✓ Acid and alkali resistant



Pipe End Plugs

Product Code: **RPP**

10mm - 114.3mm

- ✓ Manufactured using a resistant LDPE
- ✓ Seals for the end of a tube or pipe
- ✓ Prevents ingress and wear
- ✓ Ribbed for a secure fit



Finned Hole Plugs

Product Code: **FIN**

9.5mm - 28.6mm

- ✓ Manufactured from strong a bright Blue LDPE
- ✓ Pull tab for easy installation and removal
- ✓ Finned ribs for tight and secure fitting
- ✓ Seals of excess holes



Tube End Plugs

Product Code: **TUBE**

1" - 10"

- ✓ Manufactured from a reliable LDPE
- ✓ Designed for use with packing tubes
- ✓ Industry standard tube sizes
- ✓ Available in Black and White



Being one of the **UK's largest supplier of Chair & Furniture Feet**, our selection is vast and includes products designed for all kinds of uses, from **School Chairs**, to **Sofas**. Manufactured from carefully selected **anti marking materials**, we aim to provide quality every time.



Surface	Glide Material	Feet Material
Carpet	PTFE / Metal	Plastic
Wood	Felt / PTFE	Rubber / Plastic
Vinyl	PTFE / Nylon	Plastic
Tile	Felt /PTFE	Rubber
Stone	PTFE / Nylon	Plastic
Concrete	Metal	Plastic
Rubber	Metal / Nylon	Plastic / Rubber



Plastic & Rubber
Ferrules



Slides & Gliders



Chair & Furniture
Castors



Screw On Feet



Saddle Feet



Push In Feet



Sofa Feet



Stick On Feet

Plastic & Rubber Ferrules

Round Tapered Ferrules

Product Code: **FERR**

9.5mm - 19mm

- ✓ Manufactured from anti-marking LDPE
- ✓ Black finish from standard
- ✓ For angled or flat legs
- ✓ Tapered base



Round Flat Ferrules

Product Code: **FERR**

19mm - 114.3mm

- ✓ Manufactured from anti-marking LDPE
- ✓ Ideal for large furniture or desks
- ✓ Highly durable option
- ✓ Replacement ferrules



Round Angled Ferrules

Product Code: **FERR**

16mm - 22mm

- ✓ Manufactured from anti-marking LDPE
- ✓ Designed for angled chairs / furniture
- ✓ Glossy Black finish
- ✓ Angled base



Square Plastic Ferrules

Product Code: **FERR**

19mm - 60mm

- ✓ Manufactured from anti-marking LDPE
- ✓ Suitable for hard or wooden flooring
- ✓ Black and White options stocked
- ✓ Fits a wide range of furniture



Styled Rubber Ferrules

Product Code: **FERR**

12mm - 32mm

- ✓ Manufactured from a durable Neoprene
- ✓ Compatible with walking sticks / crutches
- ✓ Great for chairs and furniture
- ✓ Comes in 3 different styles



Crutch Style Rubber Ferrules

Product Code: **FERR**

16mm - 25mm

- ✓ Manufactured from a heavy duty Rubber
- ✓ Ferrules for walking sticks or crutches
- ✓ Grey or Black versions in stock
- ✓ Metal washer reinforced base



Furniture & Chair Glides

Nail On Glides

Product Code: **NAI**

19mm - 37mm

- ✓ Available in Metal, PTFE & Nylon styles
- ✓ Perfect for all flooring types
- ✓ Hard wearing product
- ✓ Great as feet or glides



Screw On Glides

Product Code: **NAI**

19mm - 60mm

- ✓ Manufactured from a premium PTFE (Teflon®)
- ✓ Screw in feet for chairs and furniture
- ✓ Ideal for heavy / moderate uses
- ✓ Reinforced steel washer base



Adhesive Glides

Product Code: **PADS**

10mm - 65mm

- ✓ Helps furniture glide across a floor / surface
- ✓ Strong and reliable adhesive backing
- ✓ Available in a variety of shapes
- ✓ Available in felt or PTFE



Insert Glides

Product Code: **RO**

16mm - 32mm

- ✓ Available with a PTFE or Felt base
- ✓ Ribbed for a tight and secure fitting
- ✓ Perfect for gliding across a surface
- ✓ Easily installed into tubes



Metal Spring Insert Glides

Product Code: **RO**

19mm - 38mm

- ✓ Manufactured from a premium Steel
- ✓ Glides for heavy furniture or appliances
- ✓ For hard and soft floors
- ✓ Ideal for metal tubing



Tilting Felt Glides

Product Code: **RO**

14mm - 22mm

- ✓ Manufactured from premium Polyethylene and Felt
- ✓ Suitable for tubular Chairs and Appliances
- ✓ Comes with a ball joint tilting base
- ✓ Felt base to reduce friction



Round Chair Feet

Product Code: **RO**

10mm - 47.5mm

- ✓ Manufactured from a durable LDPE
- ✓ Long lasting and durable
- ✓ Simple push fit design
- ✓ Ideal for tubular legs



Round Coloured Chair Feet

Product Code: **RO**

19mm

- ✓ Manufactured from a durable LDPE
- ✓ Available in 5 bright colours
- ✓ Easy to fit replacement feet
- ✓ Provides stability and grip



Round Angled Chair Feet

Product Code: **RO**

16mm - 25mm

- ✓ Manufactured from a durable LDPE
- ✓ Designed for angled tubular legs
- ✓ Strong external shank for fitting
- ✓ Available in 6 different colours



Round Domed Chair Feet

Product Code: **RO**

16mm - 76.2mm

- ✓ Manufactured from a durable LDPE
- ✓ For use with angled or uneven flooring
- ✓ Ribbed for ease of fitting
- ✓ Domed head



Wide Base Feet

Product Code: **RO**

26mm - 36mm

- ✓ Manufactured from a durable LDPE
- ✓ Perfect for heavy furniture and chairs
- ✓ Spreads weight across its base
- ✓ Ideal heavy duty upgrades



Thick Base Feet

Product Code: **RO**

15mm - 38mm

- ✓ Manufactured from a Black Polyethylene
- ✓ For adding height to chairs and
- ✓ Ribbed for a secure installation
- ✓ Thick base for height



Square Chair Feet

Product Code: **SQ**

10mm - 90mm

- ✓ Manufactured from a durable LDPE
- ✓ Weight distribution properties
- ✓ Ribbed for tight fitting
- ✓ Fits box sections



Square Angled Chair Feet

Product Code: **SQ**

15mm - 25mm

- ✓ Manufactured from a durable LDPE
- ✓ Good for weight distribution and grip
- ✓ Ideal for angled chair and desk legs
- ✓ Prevents scratched floors



Square Domed Chair Feet

Product Code: **SQ**

20mm - 25.4mm

- ✓ Manufactured from a durable LDPE
- ✓ Ribbed for a tight secure fitting
- ✓ For use with angled flooring
- ✓ Multi-purpose domed head



Square Coloured Chair Feet

Product Code: **SQ**

19mm

- ✓ Manufactured from a durable LDPE
- ✓ Available in 5 bright colours
- ✓ Provides grip and stability
- ✓ Ribbed for secure fitting



Rectangular Chair Feet

Product Code: **REC**

10mm - 50.8mm

- ✓ Manufactured from a durable LDPE
- ✓ For use with a range of surfaces
- ✓ Weight resistant design
- ✓ Ribbed for tight fitting



Rectangular Angled Chair Feet

Product Code: **REC**

15mm - 50mm

- ✓ Manufactured from a durable LDPE
- ✓ For angled chair and furniture legs
- ✓ Ribbed for a secure fitting
- ✓ Angled base



Hard Castor Wheels

Product Code: **CST**

10mm / 11mm

- ✓ Manufactured from Polyamide and Steel
- ✓ Replacement wheels for Office Chairs
- ✓ Recommended for soft surfaces
- ✓ Swivel base for movement



Soft Castor Wheels

Product Code: **CST**

10mm / 11mm

- ✓ Manufactured from TPE Rubber and Steel
- ✓ Prevents vibrations and noise
- ✓ Reduces noise during use
- ✓ Anti-marking



Castor Cups

Product Code: **CST**

60mm

- ✓ Manufactured from a Black Polypropylene
- ✓ Designed to fit common castor wheel
- ✓ Prevents movement of a wheel
- ✓ Perfect for Office Chairs



Tower Castor Glides

Product Code: **CST**

50mm

- ✓ Manufactured from Polyamide and Steel
- ✓ Aids movement of heavy applications
- ✓ Replacements for castor wheels
- ✓ Provides a sturdy base



Screw On Rubber Feet

Product Code: **SCOF**

15.9mm - 35mm

- ✓ Manufactured from strong resistant Rubber
- ✓ Counter sunk 'hidden' screw head area
- ✓ Ideal for use with wooden furniture
- ✓ Feet for heavy furniture



Screw On Plastic Feet

Product Code: **SCOF**

20mm - 40mm

- ✓ Manufactured from a strong Polypropylene
- ✓ Great for use with soft surfaces
- ✓ Prevents damage to surfaces
- ✓ Aids movement of furniture



Tube Saddle Feet

Product Code: **SAD**

14mm - 30mm

- ✓ Manufactured from LDPE or Nylon 6/6
- ✓ Available with / without fixing peg
- ✓ For tubular Chairs and Furniture
- ✓ Runs parallel to floor



Tube Saddle Glides

Product Code: **SAD**

1mm - 53mm

- ✓ Specifically designed for tubular Furniture
- ✓ Reduces friction and prevents scratching
- ✓ Easily installed via screw / peg
- ✓ Available in 8 styles



Tube Saddle Bases

Product Code: **SAD**

22mm - 30mm

- ✓ Manufactured from a durable LDPE
- ✓ Fixes onto tubular chairs and furniture
- ✓ Acts as feet for parallel tubes
- ✓ Fixing pegs as standard



Push In Feet

Product Code: **PIF**

7.9mm - 25.3mm

- ✓ Manufactured from a strong and durable PVC
- ✓ Prevents scratching of surfaces
- ✓ Quick and easy to fit
- ✓ Available in 8 styles



Sofa Feet

Product Code: **SOFA**

35mm - 90mm

- ✓ Manufactured from high strength materials
- ✓ Upgrades or replacement Sofa Feet
- ✓ Tested across many surfaces
- ✓ Available in 3 different styles



Stick On Feet

Product Code: **SOF**

6.4mm - 45.7mm

- ✓ Manufactured from a high quality Rubber
- ✓ Recommended as appliance feet
- ✓ Strong self adhesive backing
- ✓ Installed in seconds



Tube Inserts or '**Tube End Caps**' are popular for a variety of uses from **Chair Feet**, to **End Caps** for tubes. Stocked in almost **every size and shape imaginable**, you can guarantee that we have the **perfect option** for your desired application.



Are you unsure of what size insert you need?

16mm

19mm

22mm

25mm

30mm

Match the outside diameter of your tube to the outside diameter of our Tube inserts.

Please note wall thicknesses may vary

For more information visit our fitting guide here:
www.vital-parts.co.uk/measurement



Threaded Tube
Inserts



Round Tube Inserts



Square Tube Inserts



Rectangular Tube
Inserts



Oval Tube Inserts



Chromed Tube Inserts



Domed Tube Inserts



Thin Head Tube
Inserts



Tube Connectors

Threaded Tube Inserts

Round Threaded Tube Inserts

Product Code: **ROT**

M6 - M12

- ✓ Manufactured from a quality LDPE
- ✓ Compatible with machine feet
- ✓ Adds functionality to a tube
- ✓ Ribbed shank for fitting



Square Threaded Tube Inserts

Product Code: **SQT**

M6 - M12

- ✓ Manufactured from a quality LDPE
- ✓ Ribs for tight fitting and stability
- ✓ Compatible with male threads
- ✓ Fits into box sections



Rect. Threaded Tube Inserts

Product Code: **RECT**

M6 - M10

- ✓ Manufactured from a quality LDPE
- ✓ Ribbed for tight fitting
- ✓ Multi-purpose design
- ✓ Variety of sizes



Heavy Duty Threaded Tube Inserts Product Code: **SQT/ROT**

M10 - M20

- ✓ Manufactured from a reinforced Nylon
- ✓ Nickel plated Brass or SS thread
- ✓ Ribbed for secure fit
- ✓ Heavy-duty solution



Metal Threaded Tube Inserts Product Code: **MTI**

M10 - M12

- ✓ Manufactured from strong Aluminium
- ✓ Coming in round, square or rectangular
- ✓ Ideal for use with threaded feet
- ✓ Excellent weight rating



Spring Threaded Tube Inserts Product Code: **SPR**

M6 - M10

- ✓ Manufactured from a strong Spring Steel
- ✓ Simple to fit and install option
- ✓ Secure internal fitting
- ✓ Prevents flow-drilling



Tube Inserts

Round Tube Inserts

Product Code: **RO**

10mm - 195mm

- ✓ Manufactured from a quality LDPE
- ✓ Ribbed to promote tight fitting
- ✓ Ideal for finishing tubes
- ✓ Prevents ingress



Round Angled Tube Inserts

Product Code: **RO**

16mm - 25mm

- ✓ Manufactured from a quality LDPE
- ✓ Available in 6 different colours
- ✓ For angled tubular legs
- ✓ Strong external shank



Round Heavy Duty Tube Inserts

Product Code: **RO**

15mm - 38mm

- ✓ Manufactured from a Black Polyethylene
- ✓ Equipped with an extended base
- ✓ Supports heavy applications
- ✓ Easily installed



Square Tube Inserts

Product Code: **SQ**

10mm - 150mm

- ✓ Manufactured from a quality LDPE
- ✓ Designed for box sections
- ✓ Ribs for a stable fitting
- ✓ Flush fitting



Square Angled Tube Inserts

Product Code: **SQ**

15mm - 25mm

- ✓ Manufactured from a quality LDPE
- ✓ Ribbed for tight and secure fitting
- ✓ Angled base from standard
- ✓ Prevents ingress into a tube



Rectangular Tube Inserts

Product Code: **REC**

15mm - 150 mm

- ✓ Manufactured from a quality LDPE
- ✓ For use with Tubes, Pipes & Posts
- ✓ Ribbed for a secure fitting
- ✓ Great for blanking



Rectangular Angled Tube Inserts

Product Code: **REC**

15mm - 50mm

- ✓ Manufactured from a quality LDPE
- ✓ Ribbed for a secure fitting
- ✓ Multi purpose design
- ✓ Angled base



Oval Tube Inserts

Product Code: **OV**

10mm - 60mm

- ✓ Manufactured from a quality LDPE
- ✓ Great for finishing oval tubes
- ✓ Ribbed for a tight fitting
- ✓ Multi-purpose part



Tube Inserts

Oval Angled Tube Inserts

Product Code: **OV**

30mm x 15mm

- ✓ Manufactured using a hard wearing LDPE
- ✓ Oval shaped with angled head
- ✓ For use with oval tubes
- ✓ Ribbed for a secure fit



Chromed Tube Inserts

Product Code: **RO/SQ/REC/OV**

13mm - 80mm

- ✓ Manufactured from a quality LDPE
- ✓ Comes in round, square or oval
- ✓ Ideal for finishing off holes
- ✓ Clean chromed finish



Domed Tube Inserts

Product Code: **RO/SQ**

16mm - 76.2mm

- ✓ Manufactured from a quality LDPE
- ✓ Fitted with ribs for tight fitting
- ✓ Comes in round and square
- ✓ Provides an aesthetic finish



Thin Head Tube Inserts

Product Code: **RO/SQ/REC**

10mm - 88.9mm

- ✓ Manufactured from a quality LDPE
- ✓ Comes in round and square
- ✓ Ribbed shank for security
- ✓ Discrete application



Tube Connectors

Product Code: **TC**

20mm - 30mm

- ✓ Manufactured from a high quality Nylon
- ✓ Perfect for all kinds of metal tubing
- ✓ Comes in 7 different styles
- ✓ For Box Sections



Saddle Tube Connectors

Product Code: **TC**

15mm - 32mm

- ✓ Manufactured from Nylon 6/6 and Zinc Steel
- ✓ For use with round tubes or sections
- ✓ Threaded insert for fixing
- ✓ Expanding ribs



Round Straight Tube Connectors

Product Code: **TC**

15mm - 40mm

- ✓ Manufactured from both Nylon and Zinc Steel
- ✓ Provides a straight or 180° connection
- ✓ Great for extending tubing
- ✓ Suitable for round tubes



Plastic Threaded Tube Inserts

Product Code: **ROT/SQT/RECT**

M6 - M12

- ✓ Manufactured from a quality LDPE
- ✓ Available in round, square or rectangular
- ✓ Cheaper alternative to steel thread
- ✓ Easy to fit



As a **UK High Temperature Masking Supplier** we have a variety of solutions carefully designed for masking uses, put through **rigorous tests to ensure high performance**. Offering many products from High Temp Tapes, to Pre-Cut Discs for wheels, see why we're one of the **most trusted masking suppliers**.



Tape	Temp Resistance	Thickness	Adhesive	Property
Polyester	230°C	50 μ (micron)	Silicone	Flexible
25 micron Polyester	180°C	25 μ (micron)	Silicone	Precision
Polyimide	260°C	60 μ (micron)	Silicone	High Temp
Anti-static Polyimide	260°C	60 μ (micron)	Silicone	Anti-Static
Aluminium	120°C	110 μ (micron)	Acrylic	Conductive
Glass Cloth	180°C	180 μ (micron)	Silicone	Strong
Crepe	170°C	180 μ (micron)	Rubber	Malleable
Matte Cloth	80°C	0.3mm	Rubber	Strong
PTFE	180°C	80 μ (micron)	Silicone	Frictionless



Alloy Wheel
Masking Discs



Masking Kits



Masking Caps



Masking Plugs



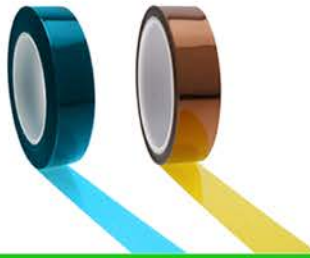
Masking Hooks



Masking Discs



Custom Die Cut
Shapes



Masking Tapes

Alloy Wheel Masking Discs

Product Code: **ALLOY**

145mm - 200mm

- ✓ Manufactured from High Temp Crepe Paper
- ✓ Temperature tested up to 160°C+
- ✓ Rubber pressure adhesive backing
- ✓ Covers the rear wheel hub during coating



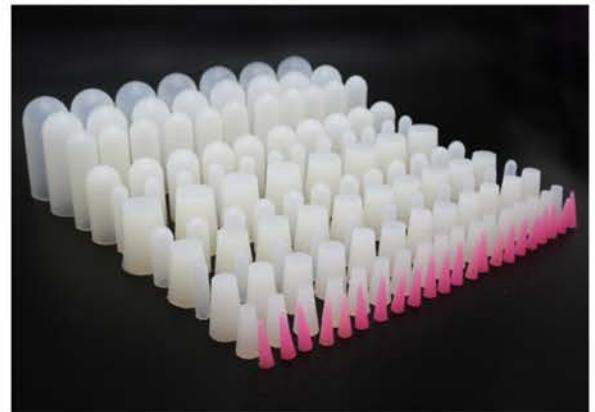
High Temp Masking Kits

Starter Kit

Product Code: **KIT003**

2.7mm - 18.54mm

- ✓ Selection of Silicone Caps and Plugs
- ✓ Temperature resistant up to 315°C
- ✓ 12 different sizes in one kit
- ✓ Great starter option



Complete Kits

Product Code: **KIT**

1.6mm - 38mm

- ✓ Selection of Caps, Plugs and Tapes
- ✓ Temperature resistant Silicone to 315°C
- ✓ Precision or Complete Kits available
- ✓ Great value for money

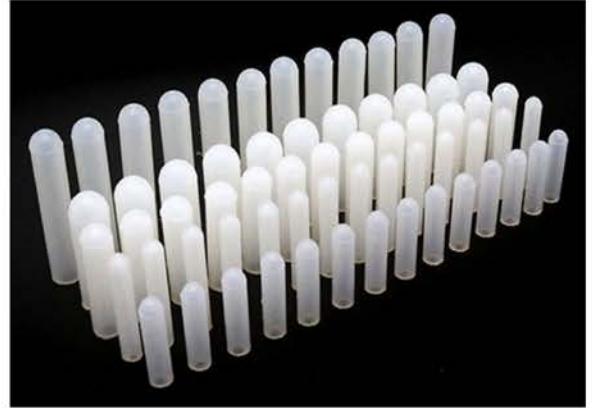


Cap Kits

Product Code: **KIT**

2.3mm - 18.54mm

- ✓ 80pc, 100pc and 150pc options
- ✓ Temperature resistant Silicone to 315°C
- ✓ Best selling solution
- ✓ Range of sizes

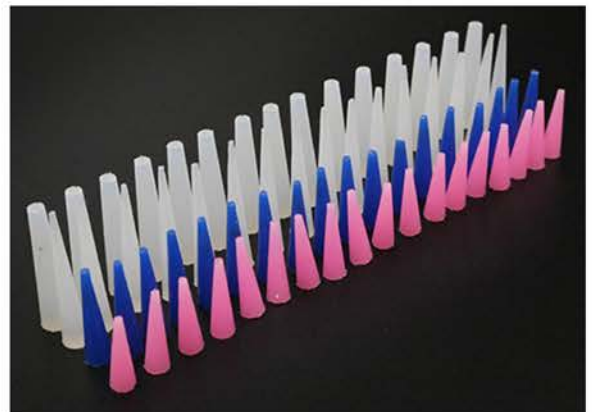


Plug Kits

Product Code: **KIT**

1.6mm - 53.98mm

- ✓ 7 different options of Plug Kits
- ✓ Temperature resistant up to 315°C
- ✓ Great for masking off holes
- ✓ EPDM Plug Kit available



Tape Kits

Product Code: **KIT**

3.2mm - 50mm

- ✓ Available with Polyester or Polyimide Tape
- ✓ General and Precision Kits available
- ✓ General Kit: 12.7mm - 50mm
- ✓ Precision Kit: 3.2mm - 12.7mm



Silicone Caps

Product Code: **SIC**

0.89mm - 53.47mm

- ✓ Temperature resistant up to 315°C
- ✓ Perfect for all masking purposes
- ✓ Resistant Silicone
- ✓ Versatile solution



EPDM Caps

Product Code: **EPC**

0.89mm - 53.47mm

- ✓ Manufactured from a premium EPDM
- ✓ Temperature resistant up to 215°C
- ✓ Resistant to acids and alkalis
- ✓ Versatile, can be stretched



Silicone Plugs

Product Code: **STP**

2.54mm - 127mm

- ✓ High temperature resistant up to 315°C
- ✓ Easily seals and protects excess holes
- ✓ Tapered to fit a range of widths
- ✓ Perfect for masking



EPDM Plugs

Product Code: **ETP**

1.6mm - 127mm

- ✓ Manufactured from a premium EPDM
- ✓ High temperature resistant up to 215°C
- ✓ Resistant to acids and alkalis
- ✓ Tapered to fit range of sizes



Masking Hooks

Product Code: **C/V/S**

1.2mm - 10mm

- ✓ Manufactured from a Copper Plated Steel
- ✓ Range of sizes, lengths and widths
- ✓ Excellent for painting, coating etc
- ✓ Available in C, V and S variations

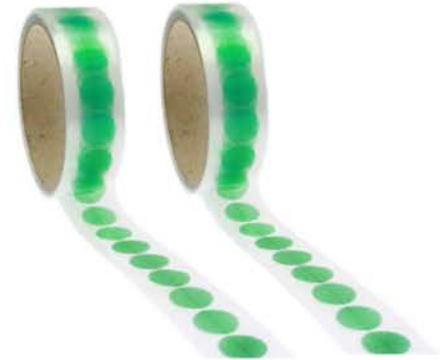


Polyester Discs

Product Code: **HID**

3mm - 150mm

- ✓ Manufactured from Green Polyester Film
- ✓ High temperature resistant up to 220°C
- ✓ Specially formulated adhesive
- ✓ Ideal for masking

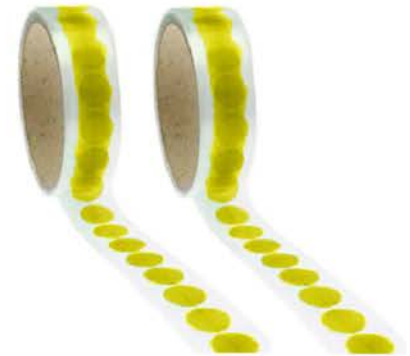


Polyimide Discs

Product Code: **ULD**

3mm - 150mm

- ✓ Ultra high temperature resistant up to 260°C
- ✓ Strong and versatile physical properties
- ✓ Perfect for all kinds of masking uses
- ✓ Can be cut to fit



Custom Die Cut Shapes

1mm+

- ✓ We have the ability in house to cut to your requirements
- ✓ Available across our full range of Masking Tapes
- ✓ Cut to any shape you require
- ✓ Call us now to enquire on 01233 713 581

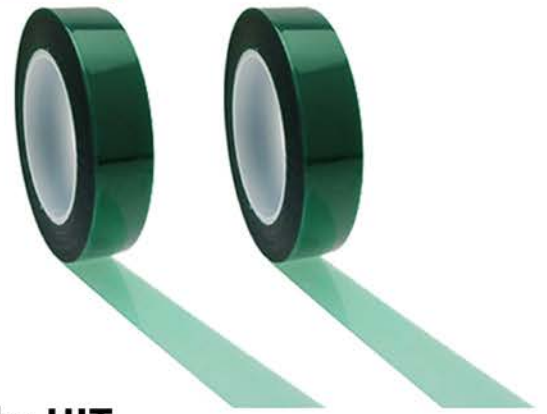


Green Polyester Tape

Product Code: **HIT**

3.2mm - 250mm

- ✓ High temperature resistant up to 230°C
- ✓ Ideal for high temperature masking
- ✓ Available as lightweight 25 micron
- ✓ Specialized Silicone adhesive

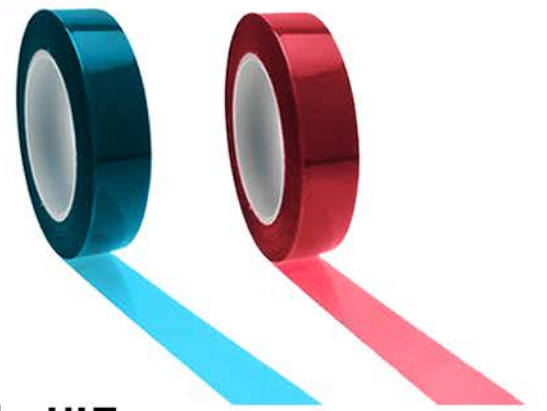


Blue & Red Polyester Tape

Product Code: **HIT**

3.2mm - 250mm

- ✓ Manufactured from Blue or Red Polyester
- ✓ High temperature resistant up to 230°C
- ✓ Silicone adhesive backing
- ✓ For all masking uses

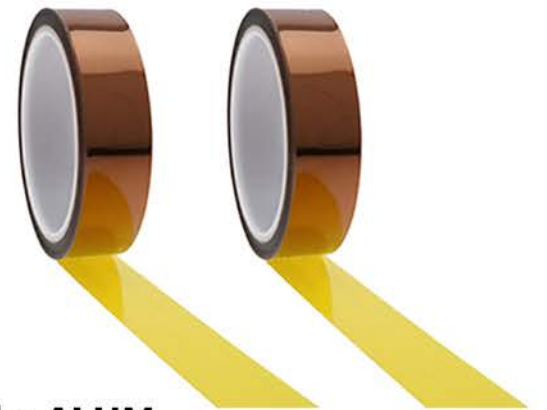


Amber Polyimide Tape

Product Code: **ULT**

3.2mm - 250mm

- ✓ Ultra high temperature resistant up to 260°C
- ✓ Versatile form of masking tape
- ✓ Strong adhesive backing
- ✓ Can be used with coils



Aluminium Foil

Product Code: **ALUM**

3mm - 250mm

- ✓ Chemical and moisture resistant Aluminium
- ✓ Reflects both light and heat
- ✓ For specialist applications
- ✓ Thermally conductive



Glass Cloth Tape

Product Code: **SHOT**

3mm - 250mm

- ✓ High temperature resistant up to 180°C+
- ✓ Robust blasting and fabrication tape
- ✓ Backed with a Silicone adhesive
- ✓ Abrasion resistant

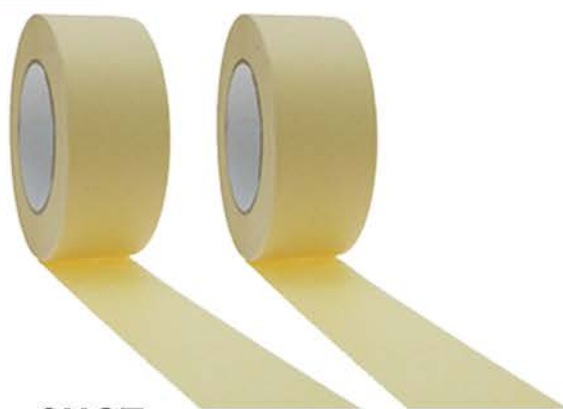


High Temp Crepe Tape

Product Code: **CRP**

3mm - 50mm

- ✓ Manufactured from a strong Crepe Paper
- ✓ High temperature resistant up to 170°C
- ✓ Strong Silicone adhesive
- ✓ No residue



Matte Cloth Tape

Product Code: **SHOT**

50mm

- ✓ Reliable closely woven saturated Polythene
- ✓ For Sandblasting or Grit-blasting
- ✓ Premium high bonding adhesive
- ✓ Multiple resistance properties



PTFE Masking Tape

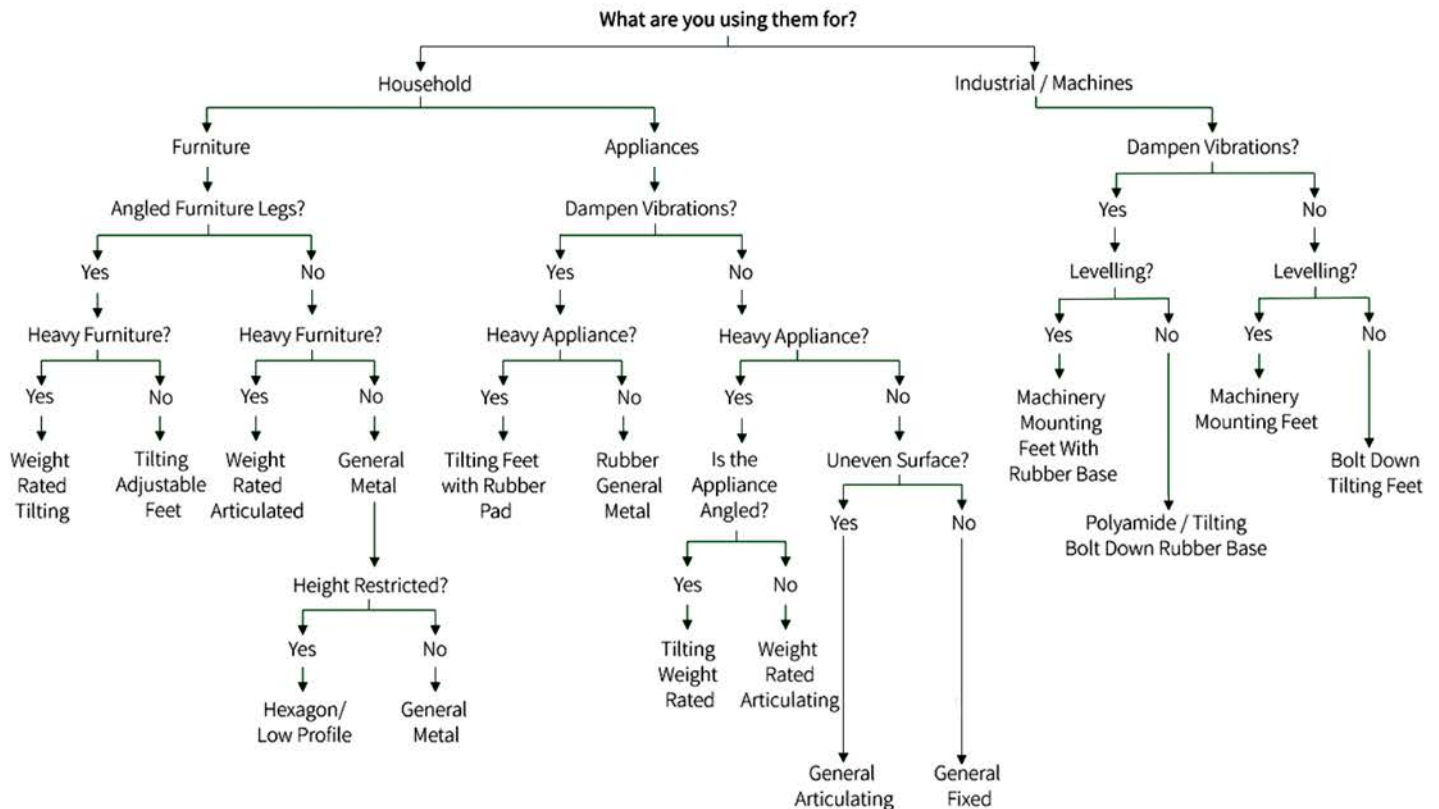
Product Code: **HIT**

5mm - 50.8mm

- ✓ Manufactured from frictionless PTFE
- ✓ High temperature resistant up to 180°C
- ✓ Silicone adhesive backing
- ✓ High tensile strength



Adjustable Feet are offered in over **17 different styles** with unique properties, from **Anti Vibration** to a **Tilting Base**. We understand that sometimes too much choice is confusing, which is why we offer a selection of **ready to install sets** for easy match up with your application, along with a number of useful resources.





General Adjustable Feet



Slotted Head Adjustable Feet



Low Profile Adjustable Feet



Weight Rated Articulating Feet



Rubber Adjustable Feet



Weight Rated Tilt Feet



Polyamide Adjustable Feet



One Piece Adjustable Feet



Metal Adjustable Feet



Tilting Adjustable Feet



Machinery Mounting Feet



Stainless Adjustable Feet



Washing Machine Feet



Hexagon Adjustable Feet



Ready To Install Sets

General Adjustable Feet

Product Code: **ADJ**

M6 - M12

- ✓ Manufactured with a reinforced Nylon Base
- ✓ Articulating or fixed bases available
- ✓ Ideal for medium to heavy uses
- ✓ Cost effective solution



Slotted Head Adjustable Feet

Product Code: **GAMF/GFMF**

M6 - M12

- ✓ Manufactured with a reinforced Nylon Base
- ✓ Articulating or fixed bases available
- ✓ Ideal for medium to heavy uses
- ✓ Slotted head for adjustment



Low Profile Adjustable Feet

Product Code: **LOW**

M5 - M10

- ✓ Manufactured with a Nylon or Polyethylene base
- ✓ Available in a range of small thread lengths
- ✓ For use with height restricted applications
- ✓ Good level of grip strength



Weight Rated Articulating Feet

Product Code: **WFMF**

M8 - M12

- ✓ Heavy duty reinforced Nylon base
- ✓ As mounts for machinery and conveyors
- ✓ Steel alloy male threaded stud
- ✓ Weight rating of up to 2000kg



Rubber Adjustable Feet

Product Code: **ADJ**

M6 - M12

- ✓ Manufactured with a Rubber or Nitrile base
- ✓ Excellent vibration and shock dampening properties
- ✓ Available in Tapered, Straight or Octagonal bases
- ✓ For stabilizing Furniture or Machinery



Weight Rated Tilting Feet

Product Code: **WAMF**

M6 - M12

- ✓ Produced with a reinforced Nylon base
- ✓ Premium Steel alloy thread and Stud
- ✓ Ball joint base allows for tilt
- ✓ Weight rated up to 2000kg



Polyamide Adjustable Feet

Product Code: **ADJ**

M8 - M10

- ✓ Manufactured with a quality Polyamide base
- ✓ Available in Zinc or Stainless Steel threads
- ✓ Allen key height adjustment from above
- ✓ Excellent weight rating 500 - 600kg



One Piece Adjustable Feet

Product Code: **OPF**

25mm - 80mm

- ✓ Manufactured using a quality reinforced Nylon
- ✓ Height adjustable to meet requirements
- ✓ Available for round and square tubes
- ✓ One piece solution



Metal Adjustable Feet

Product Code: **ADJ**

M8 - M10

- ✓ Manufactured from a strong Zinc Plated Steel
- ✓ Available in Standard or Bolt-down variants
- ✓ Ideal for machinery or appliances
- ✓ Weight rated up to 650kg per foot



Tilting Adjustable Feet

Product Code: **ADJ**

M8 - M20

- ✓ Available in Standard or Bolt-down variants
- ✓ Excellent for use with Machinery & Conveyors
- ✓ Allows for a thread tilt up to 20°
- ✓ Good for angled applications



Machinery Mounting Feet

Product Code: **MMF**

M16 - M20

- ✓ Manufactured using a strong galvanized Steel
- ✓ Comes with bolt holes for securing
- ✓ Rubber padded base available
- ✓ Allows for 8° of articulation



Stainless Adjustable Feet

Product Code: **ADJ**

M10 - M30

- ✓ Manufactured using Stainless Steel & Rubber
- ✓ Meets USDA food hygiene guidelines
- ✓ Rubber base for additional grip
- ✓ Levelling base up to 5°



Washing Machine Feet

Product Code: **ADJ**

M10

- ✓ Manufactured from a premium EPDM Shore A 70
- ✓ Screw in replacement for washing machines
- ✓ Helps to reduce vibration and noise
- ✓ Ideal load rating of 200kg



Hexagon Adjustable Feet

Product Code: **ADJ**

M8 - M12

- ✓ Manufactured from a strong HDPE or Nylon
- ✓ Unique six point hexagon base
- ✓ Ideal for medium weights
- ✓ Excellent level of stability



Ready To Install Sets

Product Code: **SET**

M6 - M12

- ✓ Quick solution for common Adjustable Feet uses
- ✓ For Tubes: Threaded Insert & Matching Feet
- ✓ For Wood: Wood Fixings & Matching Feet
- ✓ For Mounting: Brackets & Matching Feet



Cable Management products are popular for use by a range of professionals, from Electricians, to DIY Enthusiasts looking to **renovate a home**. Offering a **high quality finish and aesthetic designs** we offer a solution for almost every eventuality, from 4 styles of Rubber Grommets to 7 different Desk Cable Tidies.



Product	Used For
Cable Glands	Providing strain relief and holding cable position
Rubber Grommets	Managing, protecting and sealing cables from damage
Snap Fit Bushes	Managing and protecting cables from damage
Blanking Plugs	Blanking off holes in a wall or panel
Desk Cable Tidies	Organising and threading desk cables
Cable Clamps	Organising wires in dense areas
Heatshrink Tubing	Protecting / joining wires or concealing exposed connections
Heatshrink Caps	Sealing off frayed cable connections



Cable Glands



Rubber Grommets



Snap Fit Bushes



Desk Cable Tidies



Cable Clamps



Heatshrink Tubing 2:1



Heatshrink Tubing 3:1



Adhesive Lined
Heatshrink



Heatshrink Caps

Metric / PG Cable Glands

Product Code: **CBG**

M12 - M32

- ✓ Manufactured from quality Nylon and Nitrile
- ✓ Resistant Nitrile wire sealing area
- ✓ Metric and PG type threads
- ✓ Great for strain relief



Flexible Cable Glands

Product Code: **CBG**

M12 - M25

- ✓ Manufactured from quality Nylon and Nitrile
- ✓ Available in both Black and Grey RAL
- ✓ Flexible area for cable guidance
- ✓ Comes with lock nuts



Closed Rubber Grommets

Product Code: **CLG**

6.4mm - 42mm

- ✓ Manufactured from resistant TPE or PVC
- ✓ Closed mid section to prevent ingress
- ✓ Provides an air-tight seal
- ✓ Flame retardant



Open Rubber Grommets

Product Code: **OPG**

5mm - 52mm

- ✓ Manufactured from a highly resistant EPDM
- ✓ Ideal for protecting and threading cables
- ✓ Provides a quality air tight fitting
- ✓ Flame retardant properties



Quick Fit Rubber Grommets

Product Code: **GRM**

10mm - 28mm

- ✓ Manufactured from resistant TPE or PVC
- ✓ Quick solution for cable management
- ✓ Simple push fitting Grommet
- ✓ Perfect for Electronics uses



Stepped Rubber Grommets

Product Code: **GRM**

12.7mm - 26mm

- ✓ Manufactured from a premium Black PVC
- ✓ Protects wires, cables and pipes
- ✓ Fits a range of diameters
- ✓ Durable and resistant



Snap Fit Bushes

Product Code: **SFB**

4.7mm - 101.6mm

- ✓ Manufactured from a heat stabilized Nylon
- ✓ Ideal for threading and managing cables
- ✓ Protects a panel or cable
- ✓ Fixing clips as standard



Open / Closed Bushes

Product Code: **SFB**

7mm - 38.1mm

- ✓ Manufactured from a high quality Nylon 6/6
- ✓ Fits a range of cable widths
- ✓ Protects exposed wires
- ✓ Open/Closed design



Universal Bushes

Product Code: **UNB**

12.7mm - 38.1mm

- ✓ Manufactured from a high quality Nylon
- ✓ Fits a range of cable widths
- ✓ Fixing clips for security
- ✓ Protects cables / wires



Universal Open / Closed Bushes

Product Code: **UNB**

15.9mm - 38.1mm

- ✓ Manufactured from a high quality Nylon
- ✓ Universal sizing fits range of widths
- ✓ Fixing clips for easy installation
- ✓ Perfect for cable protection



Desk Cable Tidies

Product Code: **DCT**

60mm - 80mm

- ✓ Manufactured from a strong LDPE
- ✓ Perfect for protecting / organizing
- ✓ Ideal for offices and desks
- ✓ Easy to fit design



Cable Clamps

Product Code: **PCL**

1/8" - 5/8"

- ✓ Manufactured from a high quality Nylon 6/6
- ✓ Aids cost effective cable management
- ✓ Perfect for clamping cables or wires
- ✓ Holds cable in position



Heat Shrink Tubing 2:1

Product Code: **HST**

1.2mm - 25.4mm

- ✓ Manufactured from a high quality Polyolefin
- ✓ Sleeves to join or connect two wires
- ✓ Shrinks to fit at a ratio of 2:1
- ✓ Multiple uses per unit



Heat Shrink Tubing 3:1

Product Code: **HST**

1.5mm - 39mm

- ✓ Manufactured from high quality Polyolefin
- ✓ Shrinks to fit all applications at 3:1
- ✓ Multi purpose product
- ✓ Insulates and protects



Adhesive Lined Heatshrink

Product Code: **AHST**

3mm - 40mm

- ✓ Manufactured from a high quality Polyolefin
- ✓ Adhesive lined internal section
- ✓ Insulates and protects
- ✓ Shrinks down to fit



Heat Shrink Caps

Product Code: **HSC**

12mm - 160mm

- ✓ Made from durable Polyolefin
- ✓ Ideal for sealing off cables
- ✓ Good resistive properties
- ✓ Shrink to fit caps



Fixings & Fasteners are stocked in a variety of **threaded and non-threaded options**, often manufactured from **Zinc Coated Steel**, or **Nylon 6/6**. Designed specifically for use with a variety of Furniture & DIY uses, you can rest assured that **we have the best option for your application.**



Product	Used For
Furniture Connector Nuts	Connecting furniture
Furniture Connector Bolts	Connecting furniture
Cross Dowel Barrel Nuts	Connecting and increasing the strength of furniture joints
Cam Bolt Fixing	Connecting with lock nuts to offer connection points
Cam Lock Nuts	Locking cam bolts into place
Furniture Fixing Brakes	Supporting heavy furniture
E-Nuts, D-Nuts & T-Nuts	Adding a thread to wooden furniture
Fir Tree Plugs	Offers lightweight fixings to secure / finish
P-Clip	Organising cables or holding them in position
Locking Wing Nut	Fixing threaded components in position
Nylon Thumbscrews	Screws to fix an object in position or tighten an application



Furniture Connector Nuts



Furniture Connector Bolts



Cross Dowel Barrel Nuts



Cam Bolt Fixings



Cam Lock Nuts



Furniture Fixing Brackets



Cone Shaped E-Nuts



D-Nuts



T-Nuts



Fir Tree Plugs



P-Clips



Locking Wing Nuts



Nylon Thumbscrews

Furniture Connector Nuts

Product Code: **JCN**

M6 - M8

- ✓ Manufactured from a premium Steel Alloy
- ✓ Perfect pairing with connector bolts
- ✓ Simple to use threaded nut
- ✓ For connecting Furniture



Furniture Connector Bolts

Product Code: **JCB**

M6 - M8

- ✓ Manufactured from a premium Steel Alloy
- ✓ Simple screw fixing solution
- ✓ Excellent pairing with nuts
- ✓ For connecting furniture



Cross Dowel Barrel Nuts

Product Code: **BNUT**

M6 - M8

- ✓ Manufactured from a Zinc Plated Steel
- ✓ Nuts to increase the strength in a joint
- ✓ Cross dowel adjustable head
- ✓ Adjustable from above



Cam Bolt Fixings

Product Code: **CAM**

34mm

- ✓ Manufactured from a cost effective Turned Steel
- ✓ Available in metric and euro thread types
- ✓ Replacements for old or ineffective bolts
- ✓ For pairing with cam lock nuts



Cam Lock Nuts

Product Code: **CAM**

16mm - 19mm

- ✓ Manufactured from a premium Zinc Alloy
- ✓ Locks a matching bolt in position
- ✓ For replacing old or worn cam nuts
- ✓ Cross screw head



Furniture Fixing Brackets

Product Code: **ADJ**

M8 - M10

- ✓ Manufactured from a Zinc Finished Steel
- ✓ Brackets to fix Adjustable Feet in position
- ✓ Supports heavy furniture or appliances
- ✓ Rust and weathering resistant



Cone Shaped E-Nuts

Product Code: **MTI**

M6 - M8

- ✓ Manufactured from a premium Silver Zinc Alloy
- ✓ Used with both curved and flat surfaces
- ✓ Easily inserted in to wood or similar
- ✓ Compatible with male threads

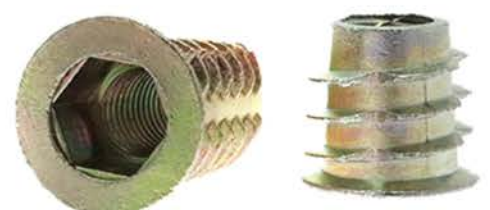


D-Nuts

Product Code: **MTI**

M4 - M10

- ✓ Manufactured from a premium Zinc Alloy
- ✓ Perfect for use as wood furniture inserts
- ✓ Good pairing with threaded feet
- ✓ Knock in for quick fixing



T-Nuts

Product Code: **MTI**

M6 - M10

- ✓ Manufactured from a premium Steel Alloy
- ✓ For use with threaded components
- ✓ Pronged for a secure fitting
- ✓ Suitable for wood



Fir Tree Plugs

Product Code: **FTP**

3mm - 10mm

- ✓ Manufactured from a premium Nylon 6/6
- ✓ Durable and long lasting solution
- ✓ Locks panels into place
- ✓ Barbed for security



P-Clips

Product Code: **PCL**

1/8" - 5/8"

- ✓ Manufactured from a premium Nylon 6/6
- ✓ To organize or thread exposed wires
- ✓ Perfect for clamping cables or wires
- ✓ Available in both Natural & Black



Locking Wing Nuts

Product Code: **WING**

M4 - M6

- ✓ Manufactured from a premium Nylon 6/6
- ✓ Available in both Natural & Black
- ✓ Locks in position for security
- ✓ Metric threaded

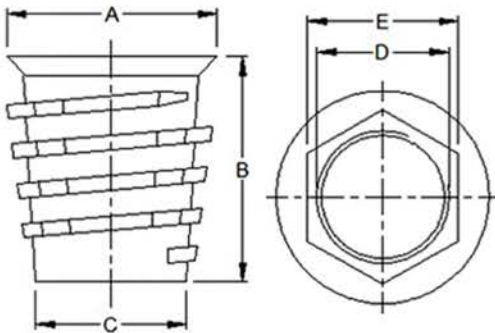


Nylon Thumbscrews

Product Code: **THUM**

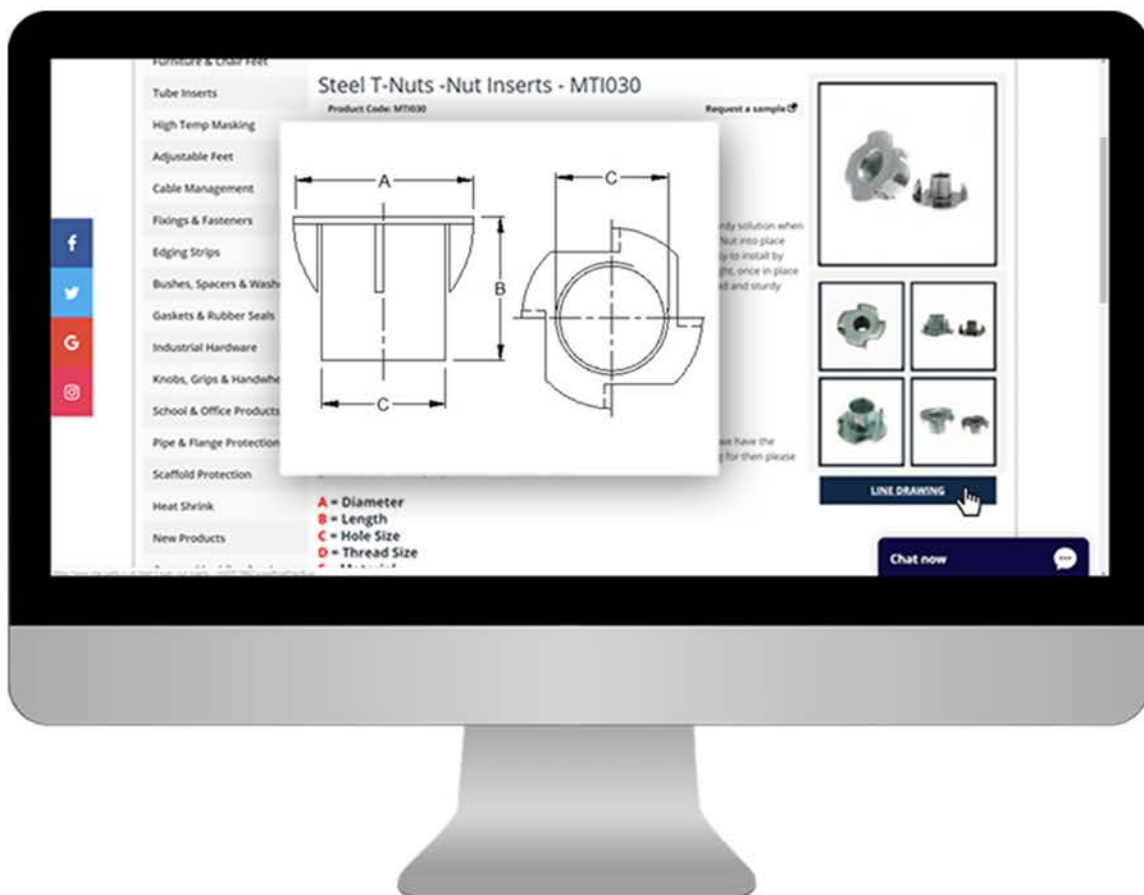
M3 - M6

- ✓ Manufactured from a strong Nylon 6/6
- ✓ Can be used to tighten panels
- ✓ Available in Black or Natural
- ✓ Metric threaded

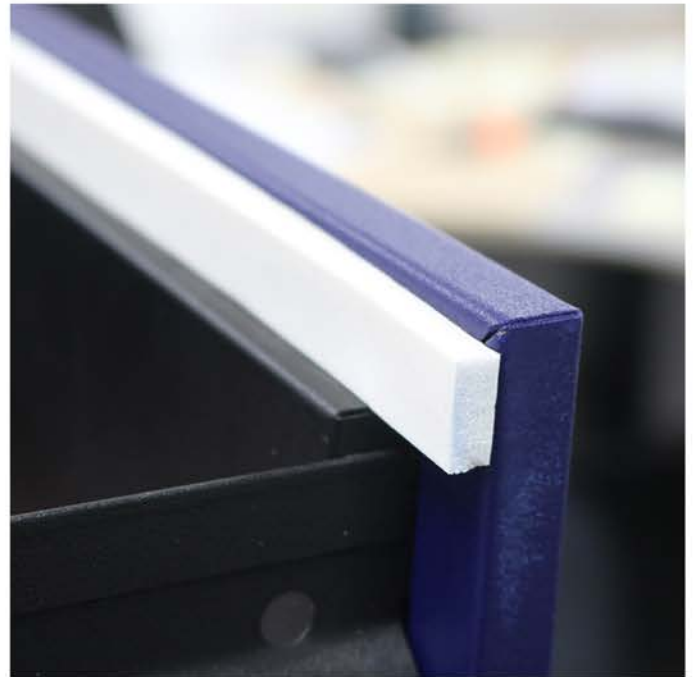






Need guidance on sizing?

We have **thousands of line drawings** on our website which can be found on the relevant product page by clicking on the **line drawing button**.



We offer a **vast array of Rubber Profiles** for both commercial and consumer uses, manufactured from high strength, resilient materials to offer **optimal properties**. From generic U Profiles to **custom made** Door Trims with Steel Reinforced ribs, we keep a large stock of these solutions.



Profile	Material	Properties
	EPDM Rubber	'U' channel for easy push fit application
	EPDM Rubber	Square channel for box sections and square bars
	PVC, EPDM Rubber & Steel	Creates compressed seal to prevent leakages
	PVC & Steel	Reinforced with steel ribs for added strength



U-Channel Edging



Square Edging



Door Trim



Reinforced Edge Trim



EPDM Self Adhesive Edging



Silicone Self Adhesive Edging

U Channel Edging

Product Code: **EDGE**

1mm - 2-4mm

- ✓ Manufactured from a solid black EPDM
- ✓ Protects exposed metal edges
- ✓ Self gripping to your object
- ✓ Versatile U channel profile



Square Edging

Product Code: **EDGE**

3mm - 25mm

- ✓ Manufactured from a solid EPDM Rubber
- ✓ Excellent resistance and strength
- ✓ Good for protection uses
- ✓ Prevents injury



Door Trim

Product Code: **EDGE**

1-3mm - 2-4mm

- ✓ Manufactured from both EPDM and Steel
- ✓ Perfect for sealing door areas and surroundings
- ✓ Prevents leakage through door gaps
- ✓ Excellent resistance against shock



Reinforced Edging

Product Code: **EDGE**

0.8mm - 6-8mm

- ✓ Manufactured from high end PVC with Steel ribs
- ✓ Prevents exposed metal from causing injury
- ✓ Reinforced with steel for added strength
- ✓ Useful inside industry and commerce



EPDM Self Adhesive Edging

Product Code: **SAES**

6mm - 50mm

- ✓ Manufactured from a pressurized EPDM
- ✓ Prevents damage to exposed panels
- ✓ Strong pressure adhesive backing
- ✓ Versatile and resistant product



Silicone Self Adhesive Edging

Product Code: **SAES**

6mm - 50mm

- ✓ Manufactured from an expanded Silicone
- ✓ High temperature resistant up to 315°C
- ✓ Silicone pressure adhesive backing
- ✓ Insulates and protects



We hold a large variety of **Edging Strip** in stock, however, we also offer **custom sizing** where required for your specific needs.

If you require a **custom profile** give us a call on **01233 713 581**

Or visit our website www.vital-parts.co.uk/edging

Supplying a huge array of **Bushes, Spacers & Washers** our range has been developed for a selection of industries and uses, from inside the household, to during manufacturing. Offering over **10 different styles of Washers**, made up of 6 **highly resistant materials**, look no further for your requirements!



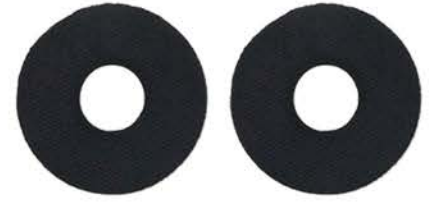
Material	Properties	Washers
Nylon	Strong, reliable, lightweight	
HDPE	Durable, good level of resistance to chemicals	
Peek	Heat resistant up to 180°C, flame resistance - UL94 V-0	
TPR Rubber	Vibration dampening, provides air tight seal	
LDPE	Strong, reliable	



Spacers & Washers



Nylon Washers



Rubbber Washers



Anti-Loss Washers



Peek Washers



Finishing Washers



Headboard Washers



Saddle Washers

Bushes & Spacers

Product Code: **NYS/NYB**

3mm - 50mm

- ✓ Manufactured from high strength Nylon 6/6
- ✓ Available with or without flange
- ✓ Great for spacing uses
- ✓ Black or Natural finish



Nylon Washers

Product Code: **WASH**

M2 - M39

- ✓ Manufactured from a durable Nylon 6/6
- ✓ Seals and prevents movement in mechanisms
- ✓ Dampens vibrations between components
- ✓ Available in Black or Natural finishes

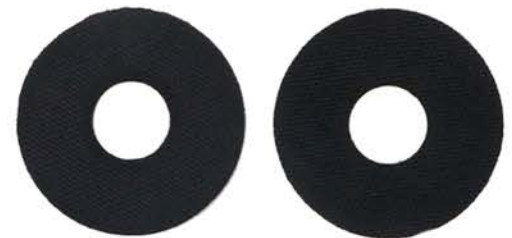


Rubber Washers

Product Code: **WASH**

3.2mm - 21mm

- ✓ Manufactured from high quality TPR
- ✓ Dampens vibrations and noise
- ✓ Prevents ingress or spillage
- ✓ Provides an air tight seal



Anti-Loss Washers

Product Code: **WASH**

M2 - M16

- ✓ Manufactured from Nylon 6/6 or HDPE
- ✓ 'Anti-Loss' teeth to grip screw / screwdriver
- ✓ Reduces vibrations between components
- ✓ High strength product

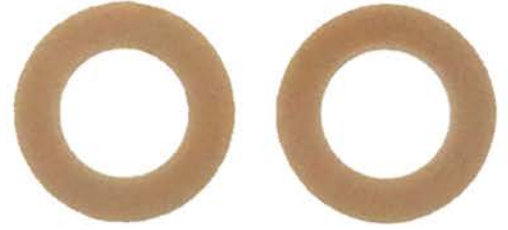


Peek Washers

Product Code: **WASH**

2.7mm - 10.5mm

- ✓ Manufactured from premium Peek sheeting
- ✓ Temperature resistant up to 180°C
- ✓ High specification washer solution
- ✓ Flame resistance: UL94 V-0



Finishing Washers

Product Code: **FWA**

M2.5 - M8

- ✓ Manufactured from Black / Natural Nylon 6.6
- ✓ Excellent protection and insulation properties
- ✓ Prevent excess movement
- ✓ Available in 5 styles



Headboard Washers

Product Code: **WASH**

8.4mm

- ✓ Manufactured from a premium LDPE
- ✓ Improves spacing between wall / headboard
- ✓ Connect a headboard to a wall
- ✓ To fit 36mm outside diameter



Saddle Washers

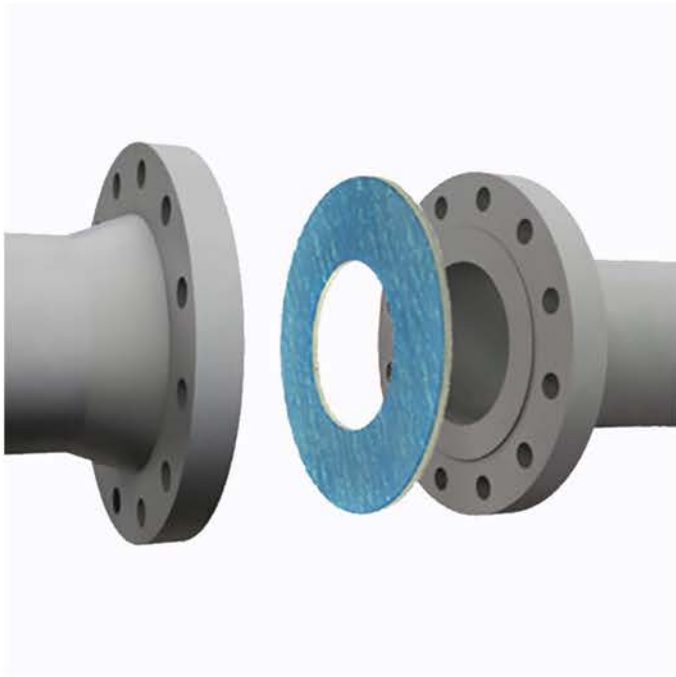
Product Code: **WASH**




12-14mm - 50-60mm

- ✓ Manufactured from a quality Nylon 6/6
- ✓ Available in Black or Natural finishes
- ✓ Support tubular frames or objects
- ✓ Ideal for tube assembly uses



Gaskets & Seals are an essential product within industry, commonly used within Oil, Water & Gas to **protect, cover and seal** pipe and fluid systems. Offered in many different materials and specifications, we supply both **custom** gaskets, and **standard** rubber seal sizes for varied uses.



Material	Resistant to...	Full Face / Insertion
EPDM	Acids, Alkalis	 
Graphite	Extreme Temperatures	
Nitrile	Oils, Gases, Petroleum Fluids	 
Non Asbestos X	Natural Gases, High Temperatures	
Non Asbestos Y	Oils, Brake Fluids, Cooling Fluids	
SBR	Water, Air	 



Full Face EPDM
Gaskets



Full Face Graphite
Gaskets



Full Face Nitrile
Gaskets



Full Face Non Asbestos
X Gaskets



Full Face Non Asbestos
Y Gaskets



Full Face SBR
Gaskets



Insertion EPDM
Gaskets



Insertion Nitrile
Gaskets



Insertion SBR
Gaskets



Solid / Sponge
Neoprene Cording



Custom Cording



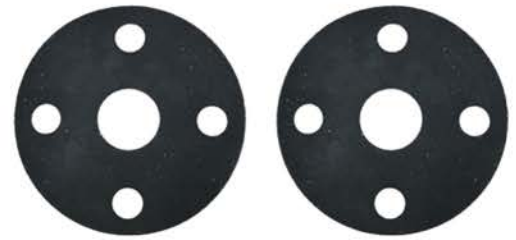
O-Ring Kits

Full Face EPDM Gaskets

Product Code: **EPDM**

Made to order

- ✓ Excellent resistance against acids and alkalis
- ✓ High continuous temperature (100°C)
- ✓ Range of pressure ratings
- ✓ Perfect for hygienic uses



Full Face Graphite Gaskets

Product Code: **GRAPHITE**

Made to order

- ✓ Manufactured from Reinforced Graphite
- ✓ Resistant against extreme temperatures
- ✓ BAM & DVGW approved material
- ✓ Range of pressure ratings

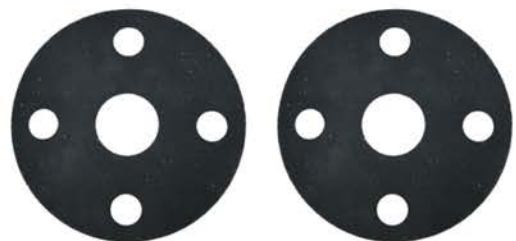


Full Face Nitrile Gaskets

Product Code: **NITRILE**

Made to order

- ✓ Resistant to oils, gases and petroleum fluids
- ✓ Resistant to aromatic hydrocarbons
- ✓ Good level of shore hardness
- ✓ Range of pressure ratings



Full Face Non Asbestos X Gaskets

Product Code: **NON ASBESTOS X**

Made to order

- ✓ Manufactured from ground-breaking AF400
- ✓ High peak temperature of 400°C
- ✓ For uses with natural gases
- ✓ Range of pressure ratings

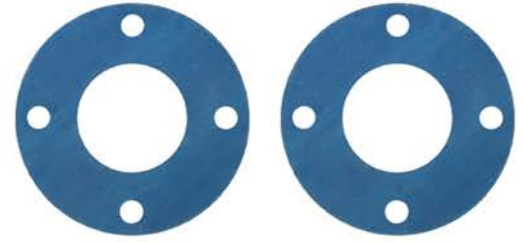


Non Asbestos Y Gaskets

Product Code: **Non Asbestos Y**

Made to order

- ✓ Manufactured from medium-duty AF300
- ✓ Recommended for steam and water systems
- ✓ Flexible for use with uneven flanges
- ✓ Range of pressure ratings

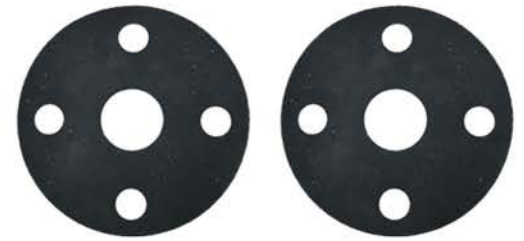


Full Face SBR Gaskets

Product Code: **SBR**

Made to order

- ✓ Manufactured from a high end SBR
- ✓ Excellent water and air resistance
- ✓ High level of tensile strength
- ✓ Range of pressure ratings



Insertion EPDM Gaskets

Product Code: **EPDM**

Made to order

- ✓ Manufactured from a high quality EPDM
- ✓ WRAS approved for use with drinking water
- ✓ Inner bolt circle type gasketing solution
- ✓ Range of pressure ratings



Insertion Nitrile Gaskets

Product Code: **NITRILE**

Made to order

- ✓ Manufactured from a high end Nitrile
- ✓ Resistant to many chemicals and solvents
- ✓ Suited for automotive industries
- ✓ Range of pressure ratings



Insertion SBR Gaskets

Product Code: **SBR**

Made to order

- ✓ Manufactured from high end SBR
- ✓ Excellent water and air resistance
- ✓ High level of tensile strength
- ✓ Range of pressure ratings



Solid / Sponge Neoprene Cording

Product Code: **CORD**

3mm - 25mm

- ✓ Manufactured from a Solid or Sponge Neoprene
- ✓ Buffer to absorb vibrations and shock
- ✓ Compression seal to prevent ingress
- ✓ High level of general resistances



Custom Cording

Product Code: **CORD**

Made to order

- ✓ Available in a range of materials
- ✓ Made to requirements
- ✓ Custom lengths
- ✓ Call to enquire on 01233 713 581



O-Ring Kits

Product Code: **ORI**

4.1mm - 39.5mm

- ✓ Available in Nitrile or FPM from standard
- ✓ Ideal for sealing off an application
- ✓ Metric or imperial sizing stocked
- ✓ All in one Kit



Gasket Specification Form

If you require a custom size Gasket please fill out the form below with your required type and sizing of Gasket and post it to us. Alternatively head over to www.vital-parts.co.uk/gaskets to download an electronic version of the form and email it to sales@vital-parts.co.uk.

A member of our sales team will then get in contact with you.

Name / Company	
Email Address	
Telephone No.	
Gasket Type	
Gasket Material	
Specification <i>Please provide clear details around your project including any measurements and key points.</i>	
Comments <i>Please provide any extra details for your project, examples include quantity and lead time.</i>	

If you have any technical drawings for your project then please send / attach them with this form.



Our selection of **Industrial Hardware** Products includes many **high quality** solutions manufactured from materials such as Stainless Steel, Duroplast & Reinforced Nylon. Useful for **locking, positioning, clamping and operating** both basic and advanced functions, we have carefully picked each product for the properties that they provide.



Material	Hygienic	Rust Proof	Lightweight	Cost Effective
Nylon	✓	✓	✓	✓
Steel	✗	✗	✗	✓
Duroplast	✓	✓	✗	-
Stainless Steel	✓	✓	✗	-
Aluminium	✓	✓	✓	✓

*Please note that these are only a few of the properties of each material



Bridge Handles



Index Plungers



Clamping Handles



Control Handwheels

Aluminium Bridge Handles

Product Code: **HAND**

113mm - 209mm

- ✓ Manufactured from a Matte Black Aluminium
- ✓ Machined threads for installation from below
- ✓ For household and industrial appliances
- ✓ Provides a high end finish



Chrome Steel Bridge Handles

Product Code: **HAND**

93mm - 245mm

- ✓ Manufactured from a Polished Chrome Plated Steel
- ✓ Machined threads for installation from below
- ✓ Includes dress rings, screws and washers
- ✓ Adds to the aesthetic of an appliance



Duroplast Bridge Handles

Product Code: **HAND**

140mm - 185mm

- ✓ Manufactured from a Glossy Black Duroplast
- ✓ For installation onto industrial appliances
- ✓ Threaded inserts for fixing from below
- ✓ Resistant to chemicals, rust and heat



Nylon Bridge Handles

Product Code: **HAND**

120mm - 213mm

- ✓ Manufactured from a resistant Glass Reinforced Nylon
- ✓ Fixed from below, cover caps included
- ✓ Finished in an attractive Matte Black
- ✓ Good for basic operations



Stainless Steel Bridge Handles

Product Code: **HAND**

220mm - 325mm

- ✓ Manufactured from a polished Stainless Steel
- ✓ Machined threads for fixing from below
- ✓ Supplied with welded base plate
- ✓ Perfect for hygienic uses



Cam Index Plungers

Product Code: **IND**

47mm - 69mm

- ✓ Manufactured from Burnished or Stainless Steel
- ✓ Spring loaded mechanism and threaded body
- ✓ Comes with locking notch from standard
- ✓ Lockable positional element



Fixing Plate Index Plungers

Product Code: **IND**

25mm - 31mm

- ✓ Manufactured from Zinc Plated Steel and Thermoplastic
- ✓ Available with or without a locking rest position
- ✓ Lockable positional element
- ✓ Comes with fixing plate



Lock Position Index Plungers

Product Code: **IND**

21mm - 31mm

- ✓ Available in Stainless Steel or Burnished Steel
- ✓ Complete with impact resistant Thermoplastic Knob
- ✓ Standard 90 degree locking rest position
- ✓ Threaded body



Metal Body Index Plungers

Product Code: **IND**

18mm - 24mm

- ✓ Available in Stainless or Zinc Plated Steel
- ✓ Comes with/without locking rest position
- ✓ Zinc plated die cast head from standard
- ✓ Threaded body



Retractable Index plungers

Product Code: **IND**

14mm - 17mm

- ✓ Manufactured from a high quality Aluminium
- ✓ Finished in either Chrome or Black
- ✓ Includes locking rest position
- ✓ Great for contained spaces



Ring Pull Index Plungers

Product Code: **IND**

14mm - 30mm

- ✓ Manufactured from Zinc Plated and Stainless Steel
- ✓ Complete with ring pull for release
- ✓ Comes with locking nut
- ✓ Threaded body



Threaded Ball Index Plungers

Product Code: **IND**

1.5mm - 12mm

- ✓ Available in either Burnished Steel or Stainless Steel
- ✓ Threaded body with spring loaded bearing
- ✓ For locking or catching uses
- ✓ High load strength



Ergonomic Clamping Handles

Product Code: **HW**

M5 - M16

- ✓ Manufactured from Nylon and Stainless Steel
- ✓ Comes with matching button cap
- ✓ Great for generic clamping uses
- ✓ Ergonomic design for comfort



Metal Clamping Handles

Product Code: **HW**

M4 - M16

- ✓ Manufactured from a Black Coated Die Cast Zinc Steel
- ✓ Heavy duty option for industrial clamping uses
- ✓ Allen key slot for fixing in position
- ✓ Ratchet button for rotation



Nylon Clamping Handles

Product Code: **HW**

M5 - M12

- ✓ Manufactured from a Glass Reinforced Nylon & Steel Stud
- ✓ Comes with push button ratchet for rotation
- ✓ For clamping or adjusting objects
- ✓ Allen key slot for adjustment



Stainless Steel Clamping Handles

Product Code: **HW**

M5 - M16

- ✓ Manufactured from hygienic Stainless Steel
- ✓ For adjusting or clamping machinery
- ✓ Comes with push button ratchet
- ✓ Allen key adjustment slot



Stainless Control Handwheels

Product Code: **HW**

160mm - 250mm

- ✓ Manufactured from Pressed Stainless Steel
- ✓ Great for manual control operations
- ✓ Keyway slot for ease of installation
- ✓ Hygienic material properties



Steel Control Handwheels

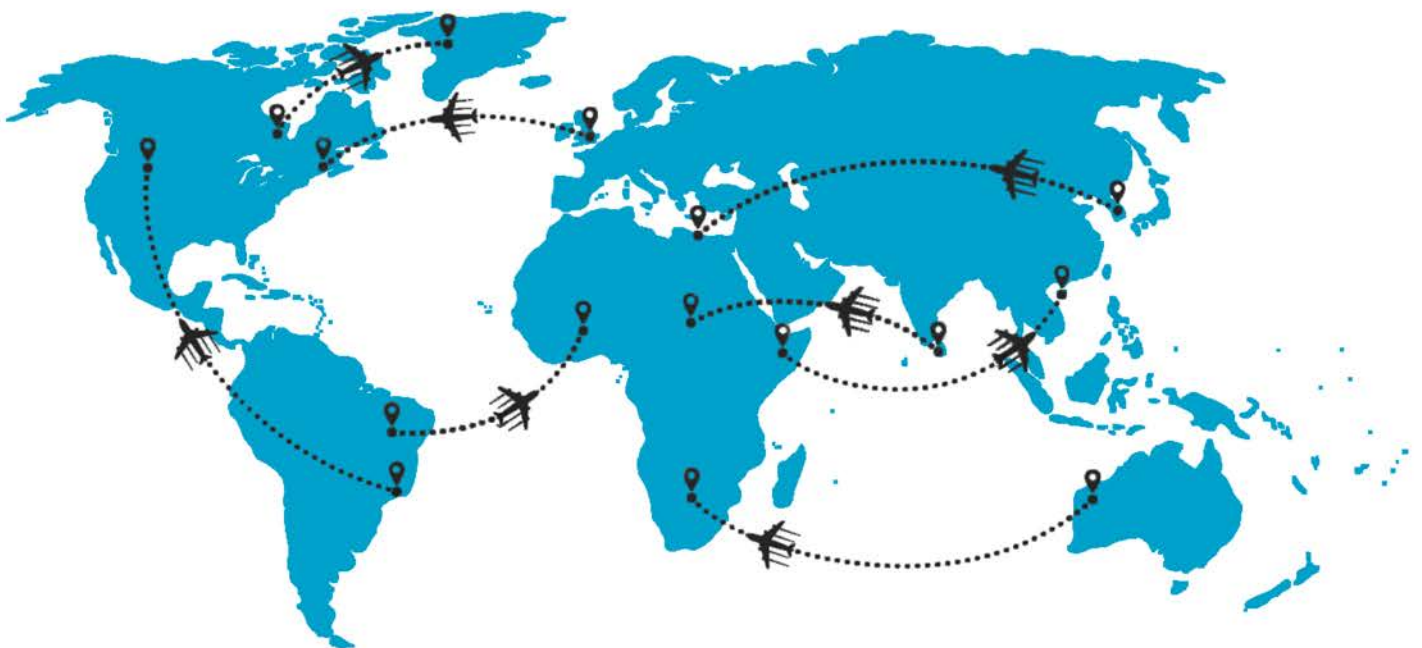
Product Code: **HW**

125mm - 250mm

- ✓ Manufactured from Black Pressed Steel
- ✓ Resistant to many chemicals and acids
- ✓ To assist in manual control operations
- ✓ Keyway slot for ease of installation



We Ship **Worldwide!**



Free Postage on all orders over **£15** to the UK!

Looking for specific data about our products?

We've got hundreds of data sheets available on our website. If you can't find the one you need email marketing@vital-parts.co.uk and we'll send it across.

Product Code: IND031

Ring Pull Index Plunger

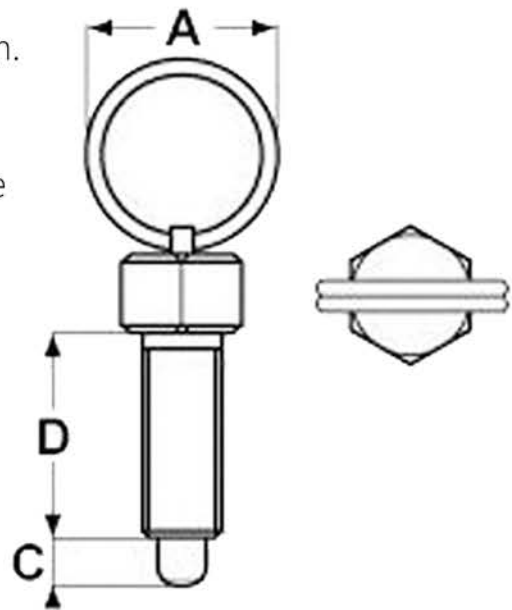
Our Ring Pull Index Plungers are a unique form of plunger, operated via lift ring and locking nut to activate a retractable spring loaded mechanism. Manufactured from a Zinc Plated Steel threaded body and paired with a Stainless Steel Pin, these are designed for moderately weighted uses where load bearing is minimal, to release a catch which can be used to lock or position an application.

Materials:

- Zinc Plated Steel

Key Product Features:

- Complete with ring pull for release
- Comes with locking nut
- Threaded body



Product Code	Head Diameter	Thread Size	Plunger Diameter	Length	Material
IND031	14mm	M6	4mm	12mm	Zinc Plated Steel



Knobs, Grips & Handwheels are generic forms of hardware used both within household, and industrial settings. Great for **adjustment, control and finishing**, each product has varying properties which offer an **upgrade on existing solutions**, or a high quality option during manufacturing.



Style	Properties / Used For
Style 1	Used on standard round bars
Style 2	Used on round bars, ribbed for shock absorbing properties
Style 3	Good for both fixed and turning uses
Style 4	Slightly ribbed for added grip
Style 5	Finger nubs for extra grip
Style 6	Ergonomic design for strength
Style 7	Good for general uses
Style 8	Finger nubs for comfort, can be used as end stopper
Style 9	Used as replacement grips for prams and strollers
Style 10	Used on round bars as replacement handles
Style 11	Used as lever grips
Style 12	Ergonomic hand design



Standard Handwheels



Premium Handwheels



Soft Touch Handwheels



Control Handwheels



Silver Ball Knobs



Black Ball Knobs



Round Grips



Square PVC Grips



Flat PVC Grips

Standard Lobe Handwheels

Product Code: **HW**

45mm

- ✓ Manufactured from a high end Black Nylon
- ✓ As control knobs to adjust
- ✓ Zinc plated metal thread
- ✓ Ergonomic design



Standard Scalloped Handwheels

Product Code: **HW**

30mm - 60mm

- ✓ Manufactured from Nylon and Zinc Plated Steel
- ✓ Available in both male and female thread types
- ✓ Excellent for machinery and appliances
- ✓ As handles to clamp or fasten



Standard Star Handwheels

Product Code: **HW**

40mm - 60mm

- ✓ Manufactured from a high end Thermoplastic
- ✓ Lightweight and durable product
- ✓ To control or adjust machinery
- ✓ 4 point 'star' design



Standard Triangle Handwheels

Product Code: **HW**

40mm - 60mm

- ✓ Manufactured from a high end Black Nylon
- ✓ As handles to control a basic function
- ✓ Male and Female available
- ✓ Zinc Plated Steel thread



Premium Star Handwheels

Product Code: **HW**

32mm - 80mm

- ✓ Manufactured from a high quality Phenolic
- ✓ As handles to clamp or fasten heavy machinery
- ✓ Male, Female & Through thread types
- ✓ Ergonomic 4 point design



Premium Scalloped Handwheels

Product Code: **HW**

32mm - 60mm

- ✓ Manufactured from a glossy Phenolic
- ✓ Excellent for adjusting or clamping
- ✓ Handwheels to adjust appliances
- ✓ Plated Steel thread



Soft Touch Lobe Style

Product Code: **HW**

28mm - 60mm

- ✓ Manufactured from a Matte Black Polypropylene
- ✓ Replacements to enhance grip and comfort
- ✓ Soft touch Elastomer coating
- ✓ Best in class for grip



Handwheels For Machinery

Product Code: **HW**

125mm - 250mm

- ✓ For industrial and professional uses
- ✓ Designed for operational functions
- ✓ Keywayed and plain bore available
- ✓ Variety of heavy duty materials



Aluminium Ball Knobs

Product Code: **HK**

16mm - 44mm

- ✓ Manufactured from DIN 319 Aluminium Alloy
- ✓ Provides a high end finish
- ✓ Threaded / Knock In styles
- ✓ To act as a handle or grip knob



Stainless Steel Ball Knobs

Product Code: **HK**

16mm - 44mm

- ✓ Manufactured from a premium Stainless Steel
- ✓ Highly polished 'chrome' finish
- ✓ Threaded / Knock In styles
- ✓ To finish off a piece of furniture



Thermoplastic Ball Knobs

Product Code: **HK**

15mm - 50mm

- ✓ Manufactured from a high quality Thermoplastic
- ✓ Finished in matte black from standard
- ✓ Threaded / Knock In styles
- ✓ Brass or standard thread



Duroplast Ball Knobs

Product Code: **HK**

16mm - 51mm

- ✓ Manufactured from a high end Duroplast
- ✓ Glossy black finish from standard
- ✓ Brass and standard styles
- ✓ Add aesthetics to an object



Flat PVC Sleeves

Product Code: **RCAP**

3mm - 25.4mm

- ✓ Manufactured from a high quality PVC
- ✓ To enhance the comfort properties of a lever
- ✓ Comfortable slip on grip solution
- ✓ High gloss finish



Square PVC Sleeves

Product Code: **SCAP**

Made to order

- ✓ Produced from a quality Dip Moulded PVC
- ✓ Glossy Black finish from standard
- ✓ Comfortable PVC Grip Solution
- ✓ To cover a square handle or lever



Round Grips

Product Code: **GRIP**

Sizes depend on style

- ✓ Manufactured from a dip moulded Vinyl / PVC
- ✓ Perfect for adding comfort to a metal bar
- ✓ Push fits onto round objects
- ✓ Available in 12 different styles



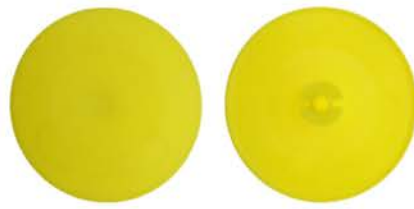
Go to www.vital-parts.co.uk/grips to view all 12 styles of Round Grips.

Pipe & Flange Protection is an essential process within many industries, especially Oil & Gas where large pipes and flanges may regularly be transported to external sites. Offering best in class properties, each product has been carefully designed to offer excellent coverage to meet your requirements.





Stick On Flange
Disc



Full Face Flange
Protectors



Flange Stud Covers



Corrugated Flange
Protectors



Flange Cover Caps



Pipe Caps



Pipe End Plugs

Stick On Flange Discs

Product Code: **FD**

36mm - 857.2mm

- ✓ Manufactured from Neoprene Rubber
- ✓ Resistant against acids, alkalis and heat
- ✓ Low-tack adhesive from standard
- ✓ Ideal for temporary flange protection



Full Face Flange Protectors

Product Code: **FFP**

86mm - 450mm

- ✓ Manufactured from a high quality LDPE
- ✓ Prevents damage during transport and storage
- ✓ Flexible ribs for tight fitting to the bore
- ✓ Covers the full face of the flange



Flange Stud Covers

Product Code: **FLC**

1" - 12"

- ✓ Manufactured from a high quality LDPE
- ✓ Protects during storage or transport
- ✓ Prevents excess wear and damage
- ✓ Push fits into defined bore holes



Corrugated Flange Protectors

Product Code: **FPD**

75mm - 1168.4mm

- ✓ Manufactured from a high quality Polycor
- ✓ Resistant, durable and long lasting
- ✓ Prevents damage during transit
- ✓ Protect the full face of a flange



Flange Cover Caps

Product Code: **FCC**

75mm - 1041.4mm

- ✓ Manufactured from a resistant Polyethylene
- ✓ Easily covers the full face of the flange
- ✓ Excellent for protecting during storage
- ✓ Impact and moisture resistant



Pipe Caps

Product Code: **PIP**

37.7mm - 1642mm

- ✓ Manufactured from a resistant Polyethylene
- ✓ Easily fits over the face and lip of a pipe
- ✓ Ribbed for a tight and secure fitting
- ✓ Flexibility for ease of installation



Pipe End Plugs

Product Code: **RPP**

10mm - 114.3mm

- ✓ Manufactured using a hard wearing LDPE
- ✓ Multiple ribs to promote a secure fit
- ✓ Plugs in the end of a tube or pipe
- ✓ Ideal pipe protection solution



Priority Free Samples



Priority Free Delivery



Bulk Trade Pricing

Enjoy all these benefits when you set up a **Business Account** with us!

Our selection of **Scaffold Protection** products have been carefully chosen to adhere to **Health & Safety requirements** on-site. Each option has been carefully designed, using high visibility colours and heavy duty materials to offer a **well rounded solution**.



Manufactured to meet strict **EN74/BS1139** Industry Standards
Adheres to **BS EN 12811-1** European Standards
Offered in bright and high visibility colours



Rebar Safety Caps



Scaffold Base Plates



Scaffold End Caps



Scaffold Inserts



Scaffold Stud Bolt
Caps

Rebar Safety Caps

Product Code: **SAFE**

8mm - 50mm

- ✓ Manufactured from a premium LDPE
- ✓ Covers exposed poles and rebars
- ✓ Temperature and UV Resistant
- ✓ Industry standard sizing



Scaffold Base Plates

Product Code: **SCAF**

220mm

- ✓ Manufactured from a high quality HDPE
- ✓ Supports the base of scaffold
- ✓ Prevents damage to the floor
- ✓ Heavy duty design



Scaffold End Caps

Product Code: **SCAF**

48.3mm

- ✓ Manufactured from a premium LDPE
- ✓ Meets health and safety guidelines
- ✓ Prevents damage and ingress
- ✓ Industry standard sizing



Scaffold Inserts

Product Code: **RO**

47.7mm - 48.4mm

- ✓ Designed to fit perfectly into Scaffold Poles
- ✓ Adheres to health and safety regulations
- ✓ Protects from weathering and damage
- ✓ Quick and easy to fit product

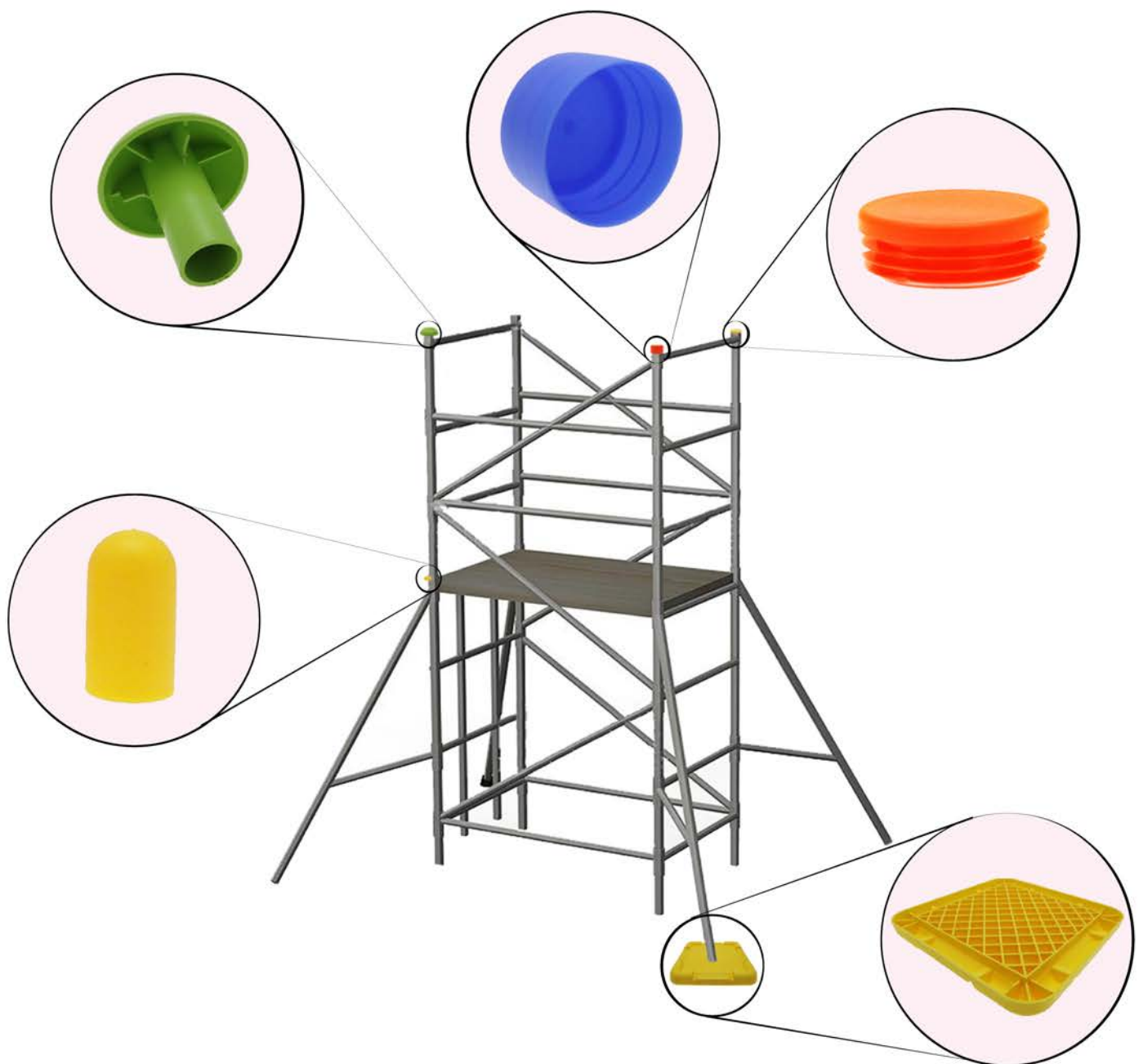


Scaffold Stud Bolt Caps

Product Code: **SCAF**

13mm

- ✓ Manufactured using a premium LDPE
- ✓ Meets all Health and Safety guidelines
- ✓ Durable re-usable product
- ✓ Covers exposed scaffold studs



Finding Us

Based in Maidstone, Kent we keep over 1,000,000 components in stock ready for next day delivery at all times, ensuring we have the product you require, when you need it.

 www.vital-parts.co.uk

 01233 713 581



Or visit us at -
Unit 17 Palace Industrial Estate - ME15 9XU

 **Vital-Parts**
We mould around you

