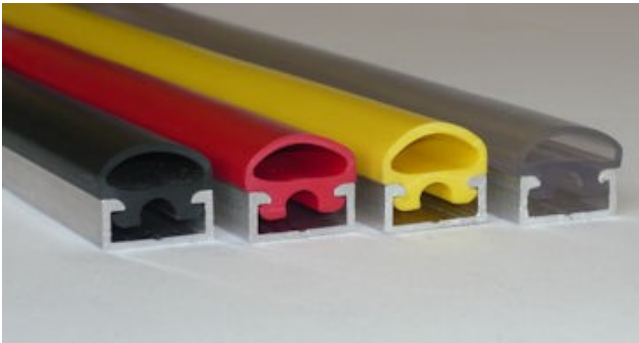


Features



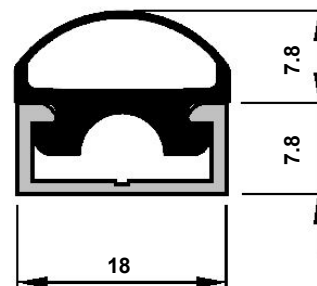
- Custom configurations
- Choice of colours
- Variety of mounting options
- Immediate activation
- Easy installation
- Fail-safe wiring available
- Durable construction
- Sealed switch compartment
- End caps available

TS6 is a low profile, mini edge designed for pinch point applications which require the features of a pressure-sensitive switch but with added cushioning. It snaps easily into a choice of aluminium or plastic mounting channel, and the small profile ensures easy installation where space is restricted. The tough, extruded polymer housing is available in a choice of colours and can be supplied with end caps fitted to provide a dust-proof seal.

Typical Applications:

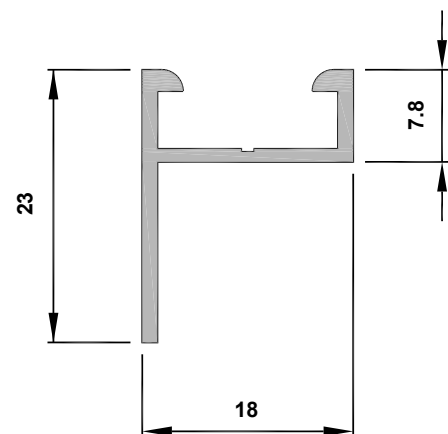
- Personnel lifts
- Sliding doors
- Conveyor systems
- Dumbwaiter doors
- Disabled facilities
- Medical tables

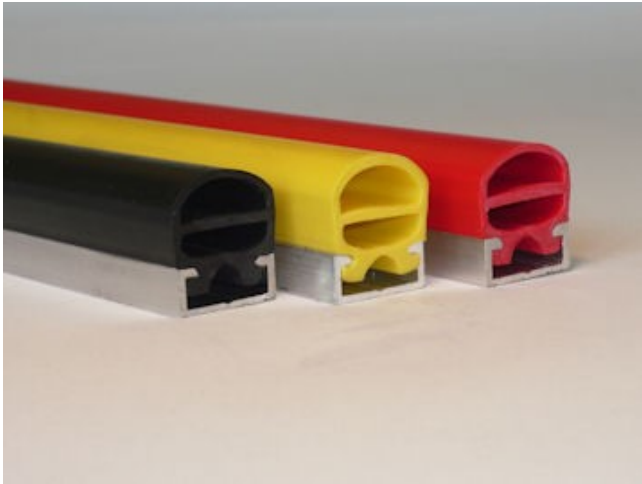
Dimensions



Technical Specification

Actuating force (80mmØ test piece)	<55N (5.5kg)
Overtravel movement to 250N	1mm
Actuating distance (80mmØ test piece)	approx. 3.5mm
Housing material	PVC
Housing colour	Black, red, yellow or clear
Channel material	Aluminium or plastic
Ingress protection	IP65
Operating temperature	-20°C to + 50°C
Typical weight	300g/m
Recommended max voltage	30V d.c.
Switching current @ 30Vdc	1A





Features

- Custom configurations
- Choice of colours
- Variety of mounting options
- Immediate activation
- Easy installation
- Fail-safe wiring available
- Durable construction
- Sealed switch compartment
- End caps available

TS16S is a small, easily installed sensing edge which is ideal for both control and safety based applications. The small profile and snap-in channel make it suitable for installations where space is restricted. The integral Tapeswitch is in the upper compartment of the PVC housing to give immediate activation and allow for some over travel.

TS16S is one of the most versatile edges in the Tapeswitch range and can be bent around smoothly curved corners when mounted in plastic channel. The tough, extruded polymer housing is available in a choice of colours and can be supplied with end caps fitted to provide a dust-proof seal.

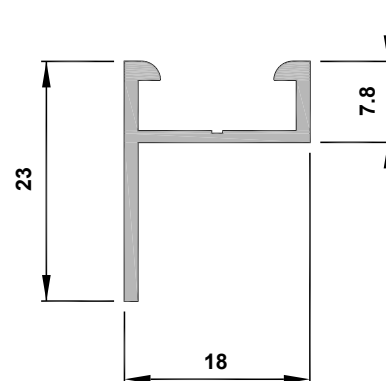
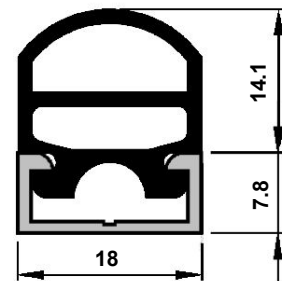
Typical Applications:

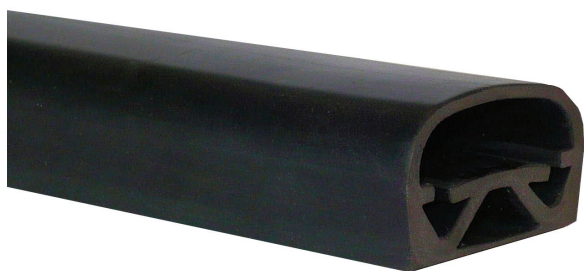
- Remote TV cameras
- Moving storage systems
- Robot positioning sensors
- Lift doors
- Stair lifts

Dimensions

Technical specification

Actuating force (80mm Ø test piece)	<120N (12kg)
Overtravel movement to 250N	2mm
Actuating distance (80mm Ø test piece)	Approx. 3.5mm
Housing material	PVC
Housing colour	Black, red or yellow
Channel material	Aluminium or plastic
Ingress protection	IP65
Operating temperature	-20°C to +50°C
Typical weight	350g/m
Recommended maximum voltage	30Vdc
Switch current @ 30Vdc	1A





Features

- Custom configurations
- Variety of mounting options
- Immediate activation
- Easy installation
- Fail-safe wiring available
- Durable construction
- End caps available

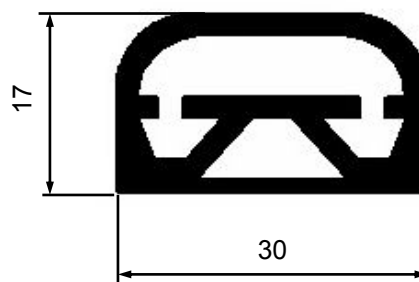
The TS19 is a very versatile sensing edge. It is ideal for control and automation functions as well as safety applications. The TS19 does not use mounting channel but instead can be fixed using adhesives or double-sided adhesive tape. This makes the edge easy to use in applications where the sensing edge has to be fitted around a curve.

The inner ribbon-switch is situated in the upper half of the housing, ensuring quick activation and good overtravel for such a low profile. End caps are also available.

Typical Applications

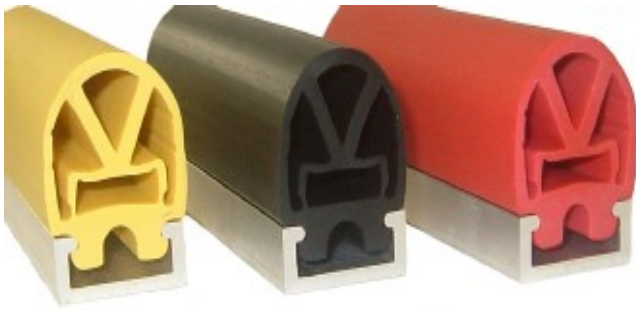
- Pallet stackers
- Advanced guided vehicles (AGVs)
- Rise-fall theatre stages
- Travelling storage systems
- Powered furniture

Dimensions



Technical Specification

Actuating force	<55N (5,5kg)
Overtravel movement to 250N	4mm
Actuation distance (80mmø test piece)	Approx. 3.5mm
Housing material	EPDM
Colour	Black
Ingress protection	IP65
Operating temperature	-20°C-+60°C
Typical weight	400g/m
Recommended max voltage	30Vdc
Switching current @ 30Vdc	1A
Means of mounting	Adhesive or double sided tape



Features

- Custom configurations
- Choice of colours
- Choice of housing materials
- Variety of mounting options
- Immediate activation
- Easy installation
- Fail-safe wiring available
- Durable construction
- Sealed switch compartment

TS26C is a compact and durable sensing edge which is ideal for a wide range of safety applications. Responding to both head-on and side impact, TS26C can be supplied in custom configurations to provide increased flexibility. The exterior housing is available in a choice of popular colours, housing materials and is supplied with either flat or angled aluminium channel to satisfy any mounting arrangement.

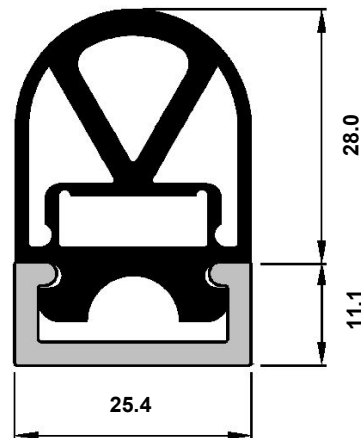
Typical Applications:

- Moving doors
- Stage lifts
- Lift doors
- Side bumpers on AGV's

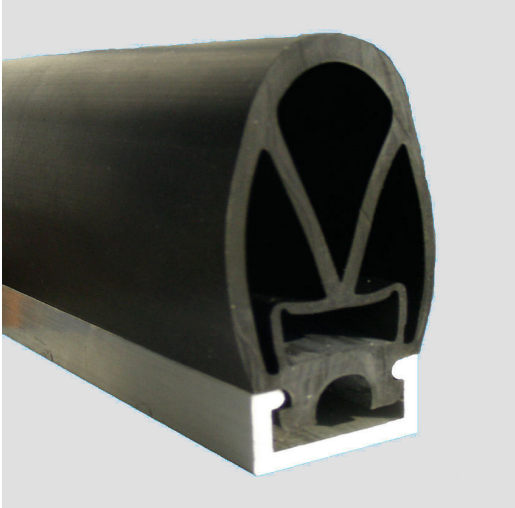
Dimensions

Technical Specification

Actuating force (80mmø test piece)	<140N (14.0kg)	
Overtravel movement to 250N	8mm	
Actuating distance (80mmø test piece)	approx. 2mm	
Housing material/Colour	Black	EPDM
	Black	NBR *Special
	Red	PVC
	Yellow	Santoprene *Special
	White	EPDM *Special
Lead Times:	Black-EPDM	Ex Stock
	Black-NBR	*Special
	Red	Ex Stock
	Yellow	*Special
	White	*Special
Channel material	Flat - aluminium or plastic Angled - aluminium	
Ingress protection	IP65	
Operating temperature range	-20°C to + 50°C	
Typical weight	700g/m	
Recommended max voltage	30V d.c.	
Switching current @ 30Vdc	1A	



* Special order—price by quotation—lead times may be up to 10 weeks.



Features

- Custom Configurations
- Variety of mounting options
- Durable construction
- Easy Installation
- Sealed switch compartment
- Fail-safe wiring available
- Immediate activation

TS28 is an extremely robust sensing edge that responds to both head-on and side activation, making it ideal for a range of personnel safety applications. The edge benefits from having a snap-in mounting channel which makes it particularly suited to installations where space is restricted. TS28 can be supplied with flat or angled aluminium mounting channel as well as the flat plastic channel.

Like all Tapeswitch sensing edges, TS28 uses a reliable ribbon switch operation principle and can be supplied with fail-safe wiring.

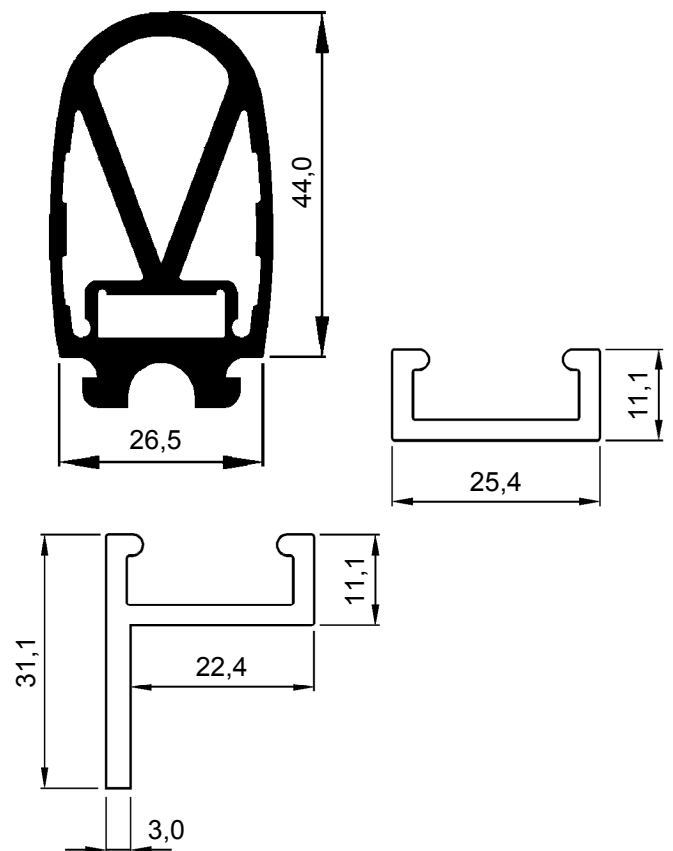
Typical Applications:

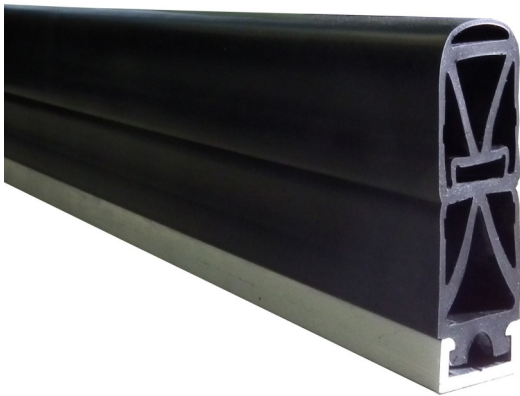
- Moving partitions
- Side bumpers on AGV's
- Lift doors
- Stage lifts
- Moving doors

Technical Specification

Actuating force (80mmØ test piece)	<60N (6.0 kg)
Over-travel movement to 250N	21mm
Actuating distance (80mmØ test piece)	7mm
Housing material	EPDM
Housing colour	Black
Channel material	Flat-aluminium or plastic Angled-aluminium
Ingress protection	IP65
Operating temperature	-20°C to + 50°C
Typical weight	1100g / m
Recommended maximum voltage	30Vdc
Switching current max. @ 30Vdc	1A

Dimensions





Features

- Custom configurations
- Variety of mounting options
- Immediate activation
- Large overtravel
- Fail-safe wiring available
- Durable construction
- Sealed switch compartment

TS29 is a very versatile sensing edge that responds to both head-on and side activation, making it ideal for a range of personnel safety applications. The ribbon-switch sensing-element can be mounted in either the top or centre of the housing allowing the sensing characteristics to be tailored to suit the application. The sensing edge can be configured for immediate activation and has considerable over-travel in relation to its width, making it ideal for fast-moving, slow-stopping applications. The edge benefits from having a snap-in mounting channel available in both flat and right-angle profile.

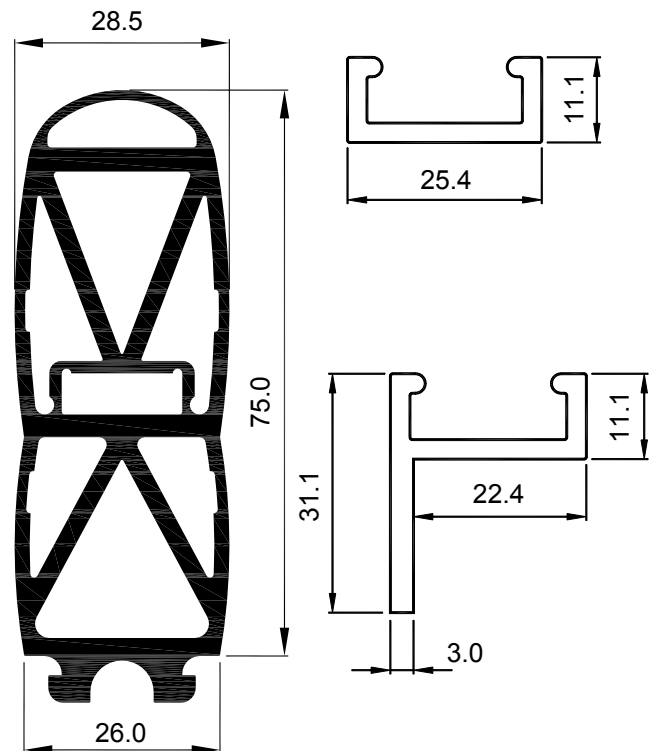
Typical Applications

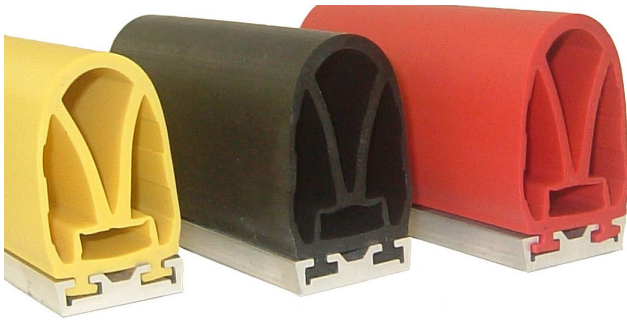
- Lift tables and platforms
- Moving partitions
- High-speed doors
- Transport doors

Technical Specification

Actuating force (80mmØ test piece)	<18N (1.8kg)
Overtravel movement to 250N	51mm
Actuating distance (80mmØ test piece)	Approx. 2mm
Housing material	EPDM
Housing colour	Black
Ingress protection	IP65
Operating temperature	-20°C to +50°C
Typical weight	1390g/m
Recommended max voltage	30V d.c.
Switching current @ 30Vdc	1A

Dimensions





Features

- Custom configurations
- Choice of colours
- Variety of mounting options
- Immediate activation
- Easy installation
- Fail-safe wiring available
- Durable construction
- Sealed switch compartment
- BIA approved

TS46D is a durable sensing edge that responds to both head-on and side impact making it ideal for a wide range of personnel safety applications. It is available in a choice of popular colours and can be supplied flat or angled channel to suit and mounting arrangement. TS46D can be supplied in custom configurations to provide increased flexibility.

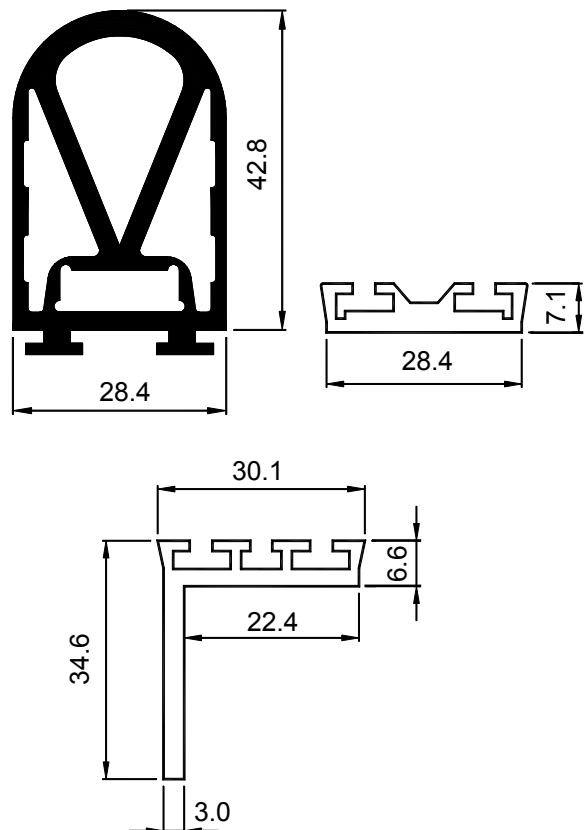
Typical Applications:

- Lift tables
- Cargo loading vehicles
- Public transport doors
- Machinery doors
- Powered gates

Technical specification

Actuating force (80mm Ø test piece)	<140N (14.0kg)
Overtravel movement to 250N	21mm
Actuating distance (80mm Ø test piece)	Approx. 7mm
Housing material	TPE
Housing colour	Black, red or yellow
Channel material	Flat-aluminium or plastic Angled-aluminium
Ingress protection	IP65
Operating temperature	-20°C to +50°C
Typical weight	1100g/m
Recommended max voltage	30Vdc
Switching current @ 30Vdc	1A

Dimensions





Features

- Custom configurations
- Variety of mounting options
- Immediate activation
- Easy installation
- Fail-safe wiring available
- Durable construction
- Sealed switch compartment

TS47 is a highly sensitive, durable sensing edge which is typically used in applications which require immediate activation with considerable overtravel. It is ideal for a variety of safety applications where personnel injury could occur from high-speed powered doors or other fast moving equipment. Available in black or red exterior housing, TS47 snaps easily into a choice of PVC or aluminium mounting channel and is available in custom configurations.

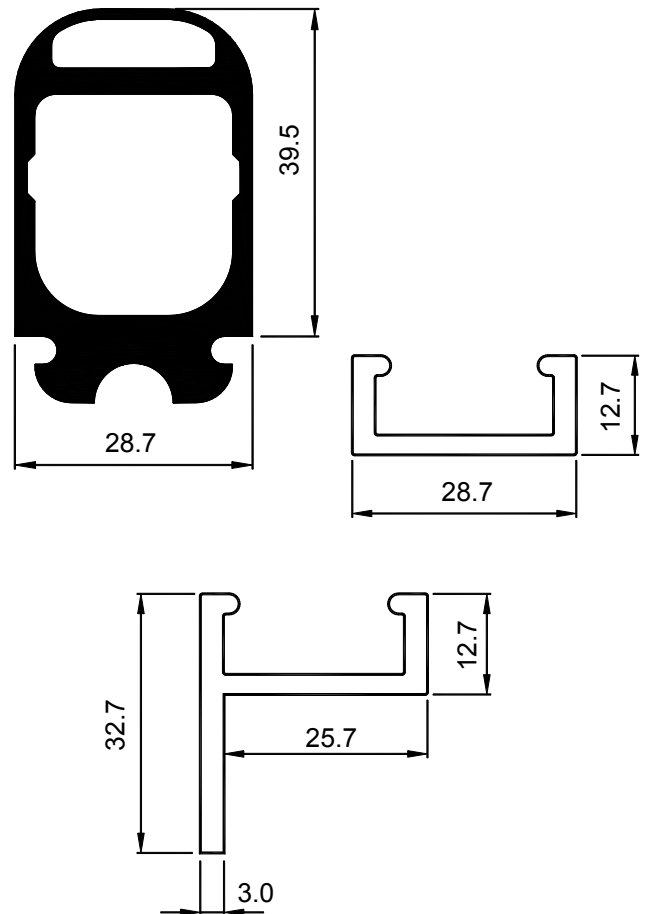
Typical Applications:

- Lift/lower barriers
- Moving partitions
- High-speed doors
- Transport doors

Technical specification

Actuating force (80mmø test piece)	<120N (12.0kg)
Overtravel movement to 250N	24mm
Actuating distance (80mmø test piece)	Approx. 2mm
Housing material	TPE
Housing colour	Black or red
Channel material	Flat-aluminium or plastic Angled-aluminium
Ingress protection	IP65
Operating temperature	-20°C to +50°C
Typical weight	1100g/m
Recommended max voltage	30V d.c.
Switching current @ 30Vdc	1A

Dimensions





Features

- Custom configurations
- Choice of colours
- Variety of mounting options
- Immediate activation
- Easy installation
- Fail-safe wiring available
- Durable construction
- Sealed switch compartment

TS48 is an extremely robust sensing edge that responds to both head-on and side activation making it ideal for a range of personnel safety applications. The edge benefits from having a snap-in mounting channel which makes it particularly suited to places where space is restricted. TS48 is available in a range of popular colours and can be supplied with flat or angled mounting channel to suit the application. Like all Tapeswitch sensing edges, TS48 uses a reliable ribbon switch operating principle and can be supplied with fail-safe wiring.

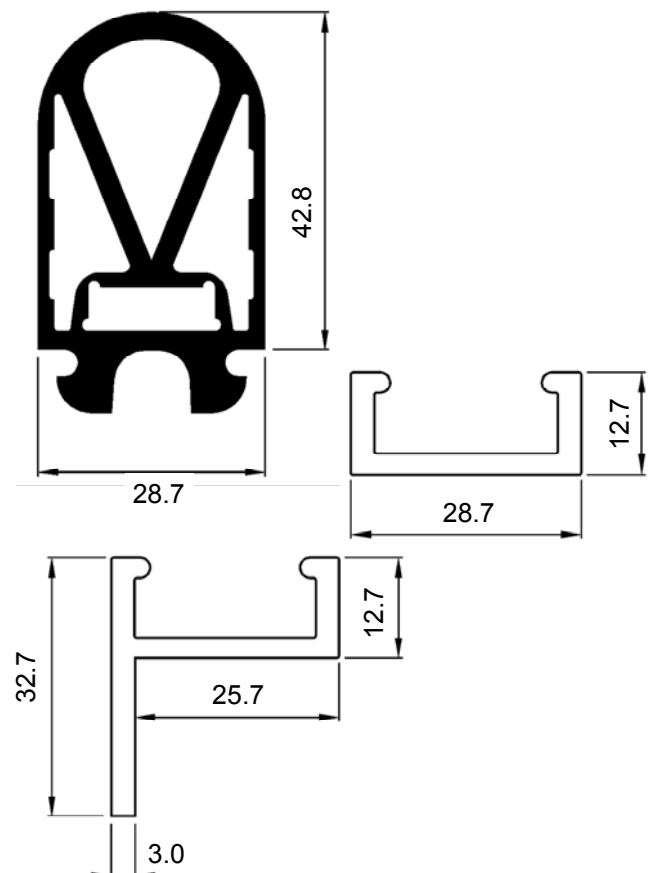
Typical Applications:

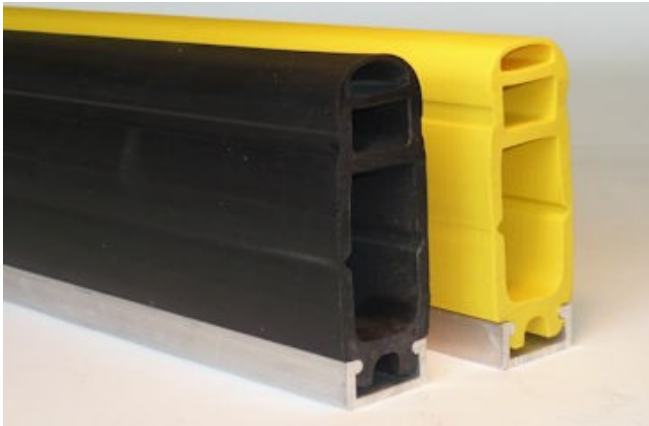
- Power operated doors and gates
- Lift tables and platforms
- Machinery doors
- Cargo loading vehicles
- Moving partitions

Technical Specification

Actuating force (80mm \varnothing test piece)	<120N (12.0kg)
Overtravel movement to 250N	21mm
Actuating distance (80mm \varnothing test piece)	Approx 7mm
Housing material	TPE
Housing colour	Black or yellow
Channel material	Flat-aluminium or plastic Angled-aluminium
Ingress protection	IP65
Operating temperature	-20 $^{\circ}$ c to +50 $^{\circ}$ c
Typical weight	1100g/m
Recommended maximum voltage	30V d.c.
Switching current @ 30Vdc	1A

Dimensions





Features

- Custom configurations
- Variety of mounting options
- Immediate activation
- Easy installation
- Fail-safe wiring available
- Durable construction
- Sealed switch compartment

TS57 is a highly sensitive, durable sensing edge which is typically used in applications which require immediate activation with considerable overtravel. It is ideal for a variety of safety applications where personnel injury could occur from high-speed powered doors or other fast moving equipment. Available in black or yellow exterior housing, TS57 snaps easily into a choice of PVC or aluminium mounting channel and is available in custom configurations.

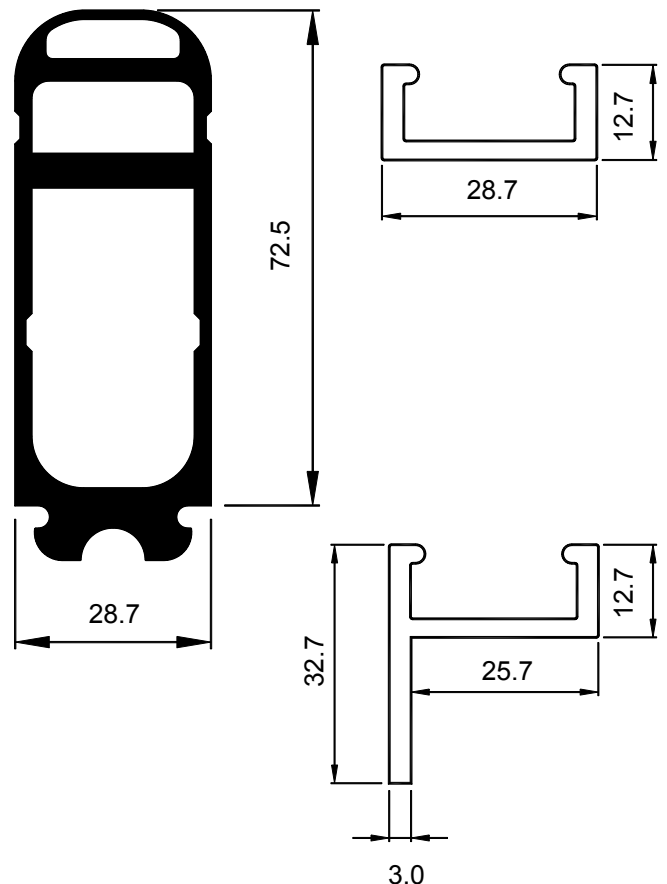
Typical Applications:

- Lift/lower barriers
- Moving partitions
- High-speed doors
- Transport doors

Technical Specification

Actuating force (80mmØ test piece)	<120N (12.0kg)
Overtravel movement to 250N	45mm
Actuating distance (80mmØ test piece)	Approx 2mm
Housing material	TPE
Housing colour	Black or yellow
Ingress protection	IP65
Operating temperature	-20°C to +50°C
Typical weight	2200g/m
Recommended maximum voltage	30V d.c.
Switching current @ 30Vdc	1A

Dimensions



Sensing Edges - Fail-safe single lead—SLZ Option

Information Sheet



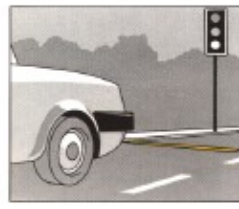
Features

- Standards - EN1760-2 & EN-13849-1
- Single-Lead
- Custom configurations
- Wide range of models
- Choice of colours
- Optional sensitivities
- Variety of mounting options
- TÜV approved
- Easy installation
- Durable construction
- Customised profiles to suit customer specification
- Volt-free, normally closed contacts
- 24v dc supply

Tapeswitch sensing edges are press-at-any-point, momentary, normally-open contacts designed to protect personnel and equipment. They are typically mounted on the leading edge of a moving object, such as a powered door, such that the sensor is activated when it meets an obstruction. As the sensing edge deforms, a stop signal is initiated and the edge acts as a 'cushion' to allow the moving parts to come to rest without exerting excessive force on the obstruction. The depth of this cushion is known as the over-travel of the sensing edge. It is essential to ensure that the dangerous parts are brought to rest within the over-travel of the sensing edge.

The fail-safe single-lead sensing edges are used in combination with the PSSZ-2 control unit. This option means that the sensing edge is monitored through a single 2 core lead.

**In order to achieve the above standards, the sensing edge must be used with a Tapeswitch PSSZ-2 control unit.*



Typical Applications:

- **Automated factory environments**
- **Car Plants**
- **Conveyors**
- **Scissor Lifts**
- **Access control**

KS2002 Sensing Edge



Features

- Custom configurations
- Aluminium mounting channel
- Immediate activation
- Easy installation
- Fail-safe wiring available
- Durable construction
- Sealed switch compartment

KS2002 is a durable sensing edge which is suitable for a range of personnel safety applications. It is typically used on the edges of high-speed powered doors, and the fins on the profile provide a seal when the door is closed. It is available in custom configurations up to 5m in one continuous length. Longer lengths consist of a single continuous ribbon switch with several sections of housing and channel. The exterior housing snaps easily into aluminium mounting channel making it ideal for installations where space is restricted.

Typical Applications:

- High-speed doors
- Transport doors
- Powered doors

Technical specification

Actuating force (80mm \varnothing test piece)	<180N (18.0g)
Overtravel movement to 250N	15mm
Actuating distance (80mm \varnothing test piece)	2mm
Housing material	EPDM
Housing colour	Black
Ingress protection	IP65
Operating temperature	-20 $^{\circ}$ c to +50 $^{\circ}$ c
Typical weight	1250g/m
Recommended max voltage	30V d.c.
Switching current @ 30Vdc	1A

Dimensions

