



SOCOMATE

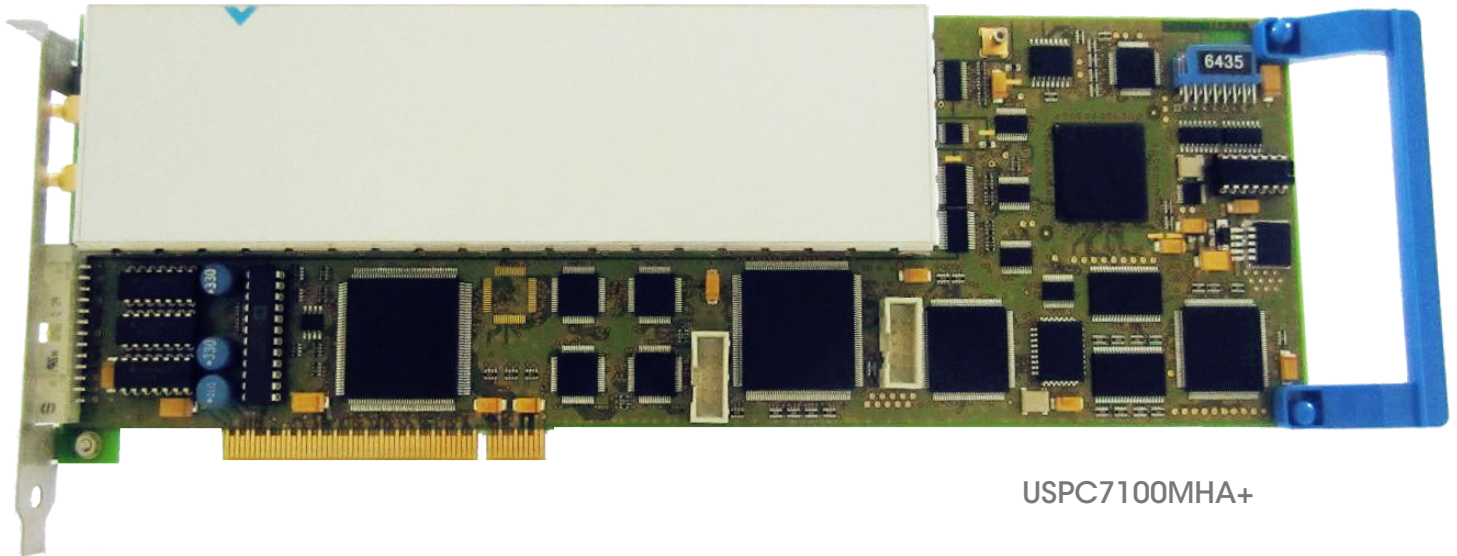
INTERNATIONAL

PCRCPP7101HA+

Single Channel Unit with Receiver
PCI Card & Remote Pulser Board RCPP



Cost effective solution for single and multiple channel UT system



USPC7100MHA+

USPC Combined
with 1 Channel RCPP

Main Features:

Remote pulser
& Pre-amplifier board

Max PRF: 20kHz

Analogue & Alarm Outputs
from USPC7100MHA+ PCI card



RCPP - 1 Channel

PCRCPP7101HA+
with Real Time
A & C-SCAN Data Acquisition

Zone Industrielle • 8, rue des Abbesses • 77580 CRECY LA CHAPELLE • FRANCE

Phone : +33 1 6463 8109 • Fax : +33 1 6463 6021

www.socomate.com • email : contact@socomate.fr

S.A.S au capital de 200.000,-€ - RC Meaux 92B17 - N° Siret 383 926 490 00020 - Code APE 2651B - TVA intracommunautaire FR27 383 926 490





SOCOMATE

INTERNATIONAL

MAIN SPECIFICATIONS

Advanced NDT Limited
 Unit 4 Elgar Business Centre
 Moseley Road
 Hallow, Worcester
 WR2 6NJ, England
 Tel: 01905 371460



Advanced NDT
 Web: www.advanced-ndt.co.uk
 Email: sales@advanced-ndt.co.uk

RCPP - 1 CHANNEL

Remote Pulser :

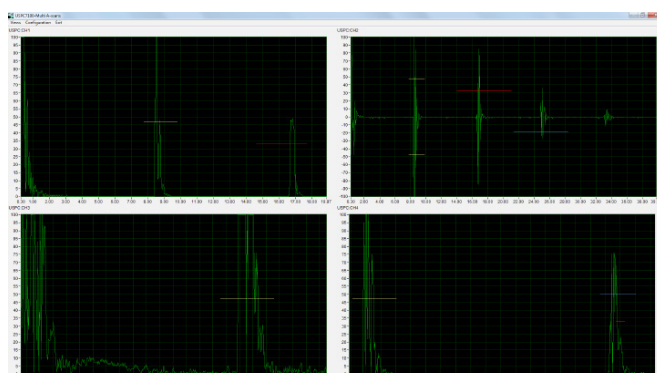
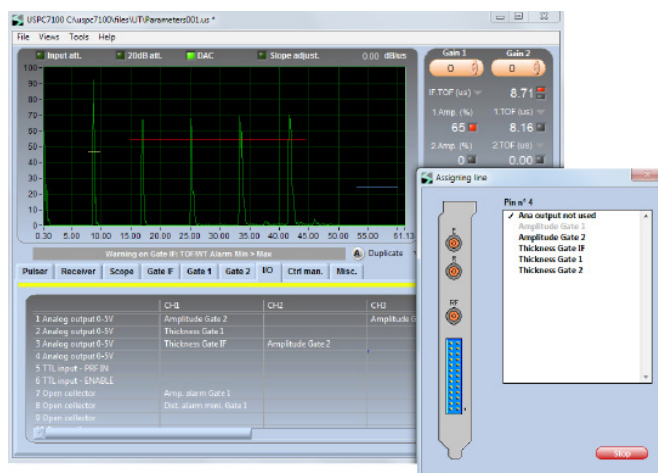
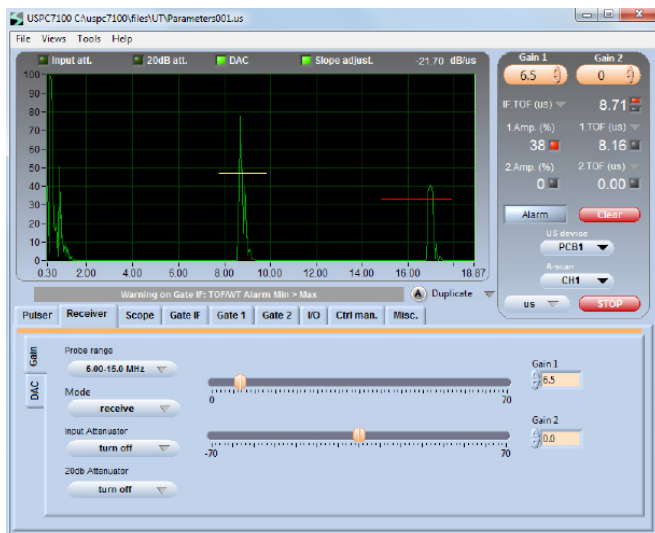
- Square Wave
 - 5 ns fall time - 7.5 ns rise time
 - 125/ 250 Volts power
 - 25 ns to 1000 ns width
- Max pulse repetition rate: 20kHz
- Remote input attenuator: 0/ 15 dB
- Preamplifier: 12 dB
- External triggers from USPC card:
 - PRF In
 - Start IN

Inputs/ Outputs connectors:

- One TX SMB
- One RX SMB
- One RF SMB for sequential A-Scans output to USPC card RX SMB input
- One RS232 SubD for pulser/ attenuator setting
- One 10-Pin HE10 for external trigger input
- Supply: 5V - 1Amp/ 12V - 1Amp/ Ground

For RECEIVER (Analogic to digital converter), SOFTWARE and SDK, please consult our USPC7100MHA+ specifications.

Dimension: 250x84x20mm - (10x 3.31x 0.79 inch)
 Weight: 0.3 kg (0.67 Lb)
 Operating temperature: 0° to 50°C - (32° to 122° F)



Socomate International maintains the right to modify the specification of their equipments, at any time and in whatever manner, in order to improve their performances.



Zone Industrielle • 8, rue des Abbesses • 77580 CRECY LA CHAPELLE • FRANCE

Phone : +33 1 6463 8109 • Fax : +33 1 6463 6021

www.socomate.com • email : contact@socomate.fr

S.A.S au capital de 200.000,-€ - RC Meaux 92B17 - N° Siret 383 926 490 00020 - Code APE 2651B - TVA intracommunautaire FR27 383 926 490

