



SOCOMATE

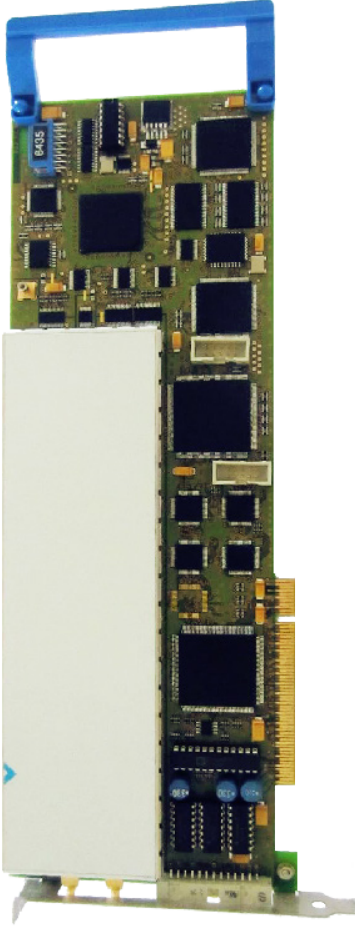
INTERNATIONAL

PCMUX7108HA+

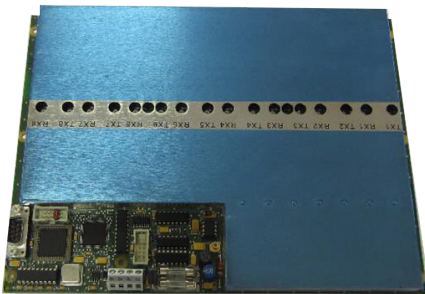
8 Channel Unit with Receiver
PCI Card & Remote Pulser Board MUX8H



USPC7100MHA+



USPC Combined
with 8 Channels MUX



MUX8H - 8 Channels

Cost effective solution for
multiple channel UT System.

Main Features:

8 Independent Remote Pulsers
& Preamplifier

Max PRF: $20\text{kHz} \div \text{Number of active channels}$

All settings
fully independent
per channel

DAC
fully independent
per channel

PCMUX7108HA+
comes with Real Time
A & C-SCAN Data Acquisition



Zone Industrielle • 8, rue des Abbesses • 77580 CRECY LA CHAPELLE • FRANCE

Phone : +33 1 6463 8109 • Fax : +33 1 6463 6021

www.socomate.com • email : contact@socomate.fr

S.A.S au capital de 200.000,-€ - RC Meaux 92B17 - N° Siret 383 926 490 00020 - Code APE 2651B - TVA intracommunautaire FR27 383 926 490





SOCOMATE

INTERNATIONAL

MAIN SPECIFICATIONS

Advanced NDT Limited
 Unit 4 Elgar Business Centre
 Moseley Road
 Hallow, Worcester
 WR2 6NJ, England
 Tel: 01905 371460

Advanced NDT
 Web: www.advanced-ndt.co.uk
 Email: sales@advanced-ndt.co.uk

MUX8H - 8 CHANNELS

Remote pulsers and preamplifier:

- Square wave:
 - 5 ns fall time - 7.5 ns rise time
 - 125/ 250 Volts power common to all channels
 - 25 ns to 1000 ns width
- Max pulse repetition rate:
 - 20kHz divided per number of active channels (up to 8)
- Remote input attenuator: 0/ 15 dB
- Preamplifier: 12 dB
- External triggers from USPC card:
 - PRF IN to trigger each channel firing
 - Start IN to trigger sequential cycle of tests

Inputs/ Outputs connectors:

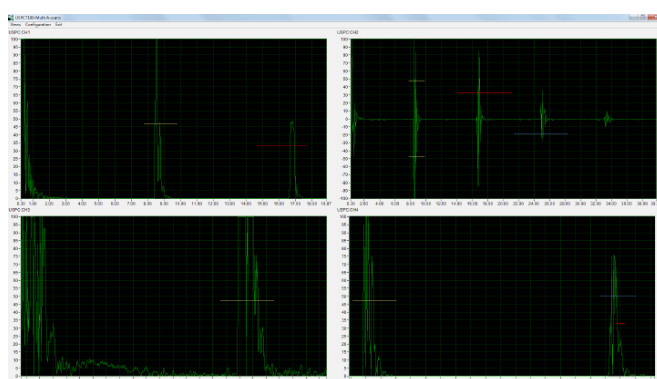
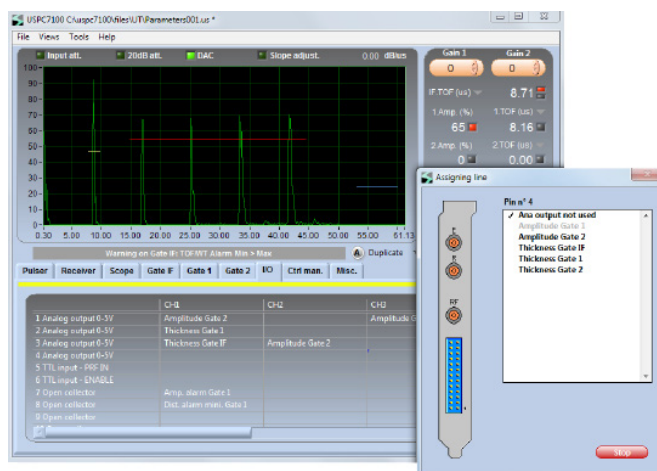
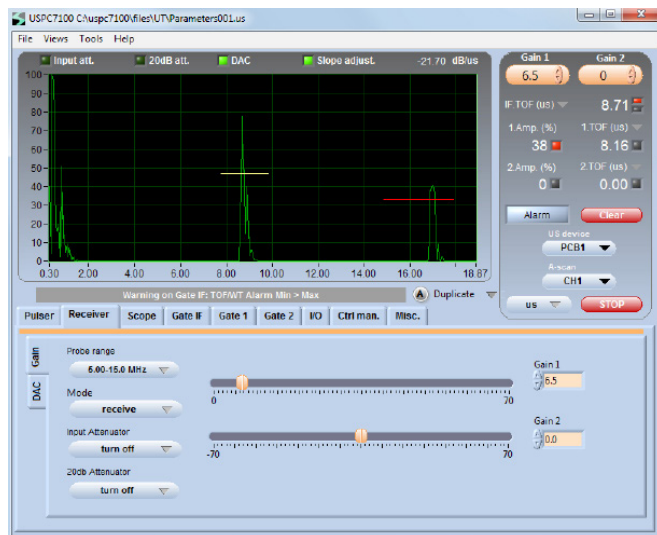
- One TX SMB per channel
- One RX SMB per channel
- One RF SMB for sequential A-Scans output to USPC card RX SMB input
- One RS232 SubD for pulser/ attenuator setting
- One 10-Pin HE10 for external triggers
- Supply: 5V - 1Amp/ 12V - 1Amp/ Ground

API SOFTWARE

- Standard for all PCI cards
- One setting test per channel
- Selection of active tests/channels
- Sequential cycle from channel start up to channel end
- All settings fully independent per channel
- TOF and WT process: Enable
- Back echo tracking: Enable
- DAC fully independent per channel
- PRF setting independent per channel

For RECEIVER (Analogic to digital converter), SOFTWARE and SDK, please consult our USPC7100MHA+ specifications.

Dimension: 250x190x20mm - (10x 7.5x 0.79 inch)
Weight: 0.8 kg (1.76 Lb)
Operating temperature: 0° to 50°C - (-32° to 122° F)



Up to 8 A-Scans screen

STANDARDS & APPROVALS

European: EN 12668-1 / Russian: GOST / Chinese: JJG 746 - 2004 UT / GE: DFO for P29TF82 Class A,B,C and P3TF31 / RR: RPS 70 5 - QCTP 6265

Socomate International maintains the right to modify the specification of their equipments, at any time and in whatever manner, in order to improve their performances.

Zone Industrielle • 8, rue des Abbesses • 77580 CRECY LA CHAPELLE • FRANCE

Phone : +33 1 6463 8109 • Fax : +33 1 6463 6021

www.socomate.com • email : contact@socomate.fr

S.A.S au capital de 200.000,-€ - RC Meaux 92B17 - N° Siret 383 926 490 00020 - Code APE 2651B - TVA intracommunautaire FR27 383 926 490

