

# KEL-FG-A

Flange enclosures for cable entry



Slit grommets

1

Description	Type	Order No.	Grommets		PU
			small	large	

## Product description

The cable entry frames KEL-FG-A are suited for installation, sealing and strain relief of cables with connectors and conduits at an angle of 90° to the cabinet, enclosure or machine wall. For routing cables and conduits up to 35 mm in diameter. The KEL-FG-A frame matches exactly the cut-out dimensions for 24-pin standard industrial connectors. A flat rubber gasket is included in the shipment.

## Advantages & benefits

- Installation at an angle of 90° to the wall
- Mechanical protection of cable directly at the place of entry
- Protection against water spray and drips
- Warranty on pre-terminated cables remains
- Strain relief according to EN 62444
- High stability, vibration resistant

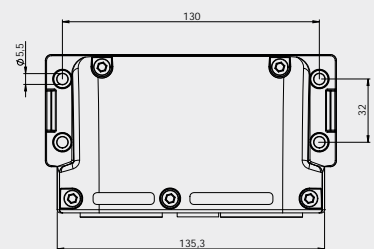
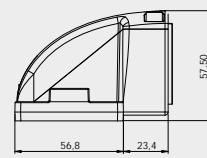
## Specifications

Material	Polyamide (PA)
Flame class	UL94-Vo, self-extinguishing
IP rating	IP54, with gasket and correct selection of the cable grommets
Temperature	- 40°C to + 140°C (static)
Properties	Halogen-free, silicone-free
Cut-out dimensions	36 × 112 mm, Page 192 - 193

## Accessories

Cable grommets	44 - 48
KEL-SNAP Mounting frames	36 - 37
KEL-EMC Cable collectors	122 - 124

	<b>KEL-FG-A10</b>	<b>42320</b>	<b>10 -</b>	<b>1</b>
	<b>KEL-FG-A10</b> with V2A screws	<b>42320.200</b>	<b>10 -</b>	<b>1</b>
	<b>KEL-FG-A7</b>	<b>42322</b>	<b>6 1</b>	<b>1</b>
	<b>KEL-FG-A7</b> with V2A screws	<b>42322.200</b>	<b>6 1</b>	<b>1</b>
	<b>KEL-FG-A4</b>	<b>42324</b>	<b>2 2</b>	<b>1</b>
	<b>KEL-FG-A4</b> with V2A screws	<b>42324.200</b>	<b>2 2</b>	<b>1</b>





# KEL-FG-B

## Flange enclosures for cable entry



V2A anti-corrosive  
Also available with stainless steel screws (V2A).



Slit grommets



Type	Order No.	Grommets small   large	PU	Description
------	-----------	---------------------------	----	-------------

KEL-FG-B4	42330	4 -	1	
KEL-FG-B4 with V2A screws	42330.200	4 -	1	
KEL-FG-B1	42332	- 1	1	
KEL-FG-B1 with V2A screws	42332.200	- 1	1	

### Product description

The cable entry frames KEL-FG-B are suited for installation, sealing and strain relief of cables with connectors and conduits at an angle of 90° to the cabinet, enclosure or machine wall. For routing cables and conduits up to 35 mm in diameter. A flat rubber gasket is included in the shipment.

### Advantages & benefits

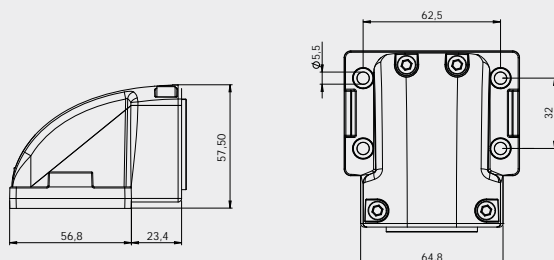
- Installation at an angle of 90° to the wall
- Mechanical protection of cable directly at the place of entry
- Protection against water spray and drips
- Warranty on pre-terminated cables remains
- Space saving shape
- Strain relief according to EN 62444
- High stability, vibration resistant

### Specifications

Material	Polyamide (PA)
Flame class	UL94-Vo, self-extinguishing
IP rating	IP54, with gasket and correct selection of the cable grommets
Temperature	- 40°C to + 140°C (static)
Properties	Halogen-free, silicone-free
Cut-out dimensions	46 × 36 mm, Page 192 - 193

### Accessories

Cable grommets	44 - 48
KEL-EMC Cable collectors	122 - 124



# KEL-FG-E

Flange enclosures for cable entry



Slit grommets

1

Description	Type	Order No.	Grommets		PU
			small	large	

## Product description

The cable entry frames KEL-FG-E are suited for installation, sealing and strain relief of cables with connectors and conduits at an angle of 90° to the cabinet, enclosure or machine wall. For routing cables and conduits up to 17 mm in diameter.

The KEL-FG-E version is particularly suited for flat connectors. The small frame is ideal for applications with limited space. A flat rubber gasket is included in the shipment.

## Advantages & benefits

- Installation at an angle of 90° to the wall
- Mechanical protection of cable directly at the place of entry
- Protection against water spray and drips
- Warranty on pre-terminated cables remains
- Space saving shape
- Optimal for D-Sub connectors
- Strain relief according to EN 62444
- High stability, vibration resistant

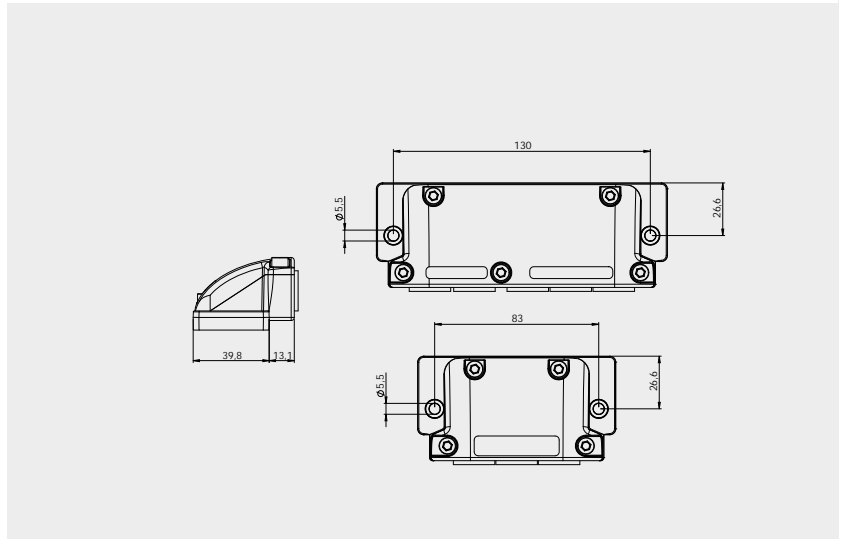
## Specifications

Material	Polyamide (PA)
Flame class	UL94-Vo, self-extinguishing
IP rating	IP54, with gasket and correct selection of the cable grommets
Temperature	- 40°C to + 140°C (static)
Properties	Halogen-free, silicone-free
Cut-out dimensions	E3: 65 × 24 mm E5: 112 × 24 mm

## Accessories

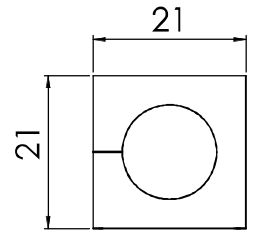
Cable grommets	44 - 48
KEL-EMC Cable collectors	122 - 124

	KEL-FG-E3	42334	3 -	5
	KEL-FG-E3 with V2A screws	42334.200	3 -	5
	KEL-FG-E5	42336	5 -	5
	KEL-FG-E5 with V2A screws	42336.200	5 -	5



# KT

## Grommets, small, single



1

Description	Type	Order No grey	Order No black	Clamping range	PU
-------------	------	------------------	-------------------	----------------	----

### Product description

Cable grommets KT small are used with the following cable entry frames:

KEL-U/KEL-ER/KEL (8 - 34) | KVT (38 - 42)

The model range KT small is designed for cable diameters from 2 to 17 mm.

### Assembly note








When installing the grommets, the flat side should be facing the middle of the frame. This allows the flat sides of adjacent grommets to match up and provide a secure seal.

#### Specifications KT grey

Material	Elastomer
Flame class	UL94-Vo, self-extinguishing
IP rating	KT round, single: up to IP65 (in combination with KEL-ER frame) KT special/blank: IP54
NEMA type rating	up to NEMA type 4X (acc. to UL 50E)
Temperature	- 40°C to + 90°C (static)
Properties	Halogen-free, silicone-free

#### Specifications KT black

Material	Elastomer
Flame class	UL94-HB
IP rating	KT round, single: up to IP65 (in combination with KEL-ER frame) KT special/blank: IP54
NEMA type rating	up to NEMA type 4X (acc. to UL 50E)
Temperature	- 30°C to + 90°C (static)
Properties	Higher chemical resistance

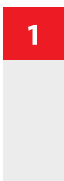
BTK		BTK	<input type="checkbox"/> 41251	<input checked="" type="checkbox"/> 41351	Blank grommet	10		
KT round		KT 2	<input type="checkbox"/> 39934	<input checked="" type="checkbox"/> 41302	2 - 3 mm	10		
		KT 3	<input type="checkbox"/> 41203	<input checked="" type="checkbox"/> 41303	3 - 4 mm	10		
		KT 4	<input type="checkbox"/> 41204	<input checked="" type="checkbox"/> 41304	4 - 5 mm	10		
		KT 5	<input type="checkbox"/> 41205	<input checked="" type="checkbox"/> 41305	5 - 6 mm	10		
		KT 6	<input type="checkbox"/> 41206	<input checked="" type="checkbox"/> 41306	6 - 7 mm	10		
		KT 7	<input type="checkbox"/> 41207	<input checked="" type="checkbox"/> 41307	7 - 8 mm	10		
		KT 8	<input type="checkbox"/> 41208	<input checked="" type="checkbox"/> 41308	8 - 9 mm	10		
		KT 9	<input type="checkbox"/> 41209	<input checked="" type="checkbox"/> 41309	9 - 10 mm	10		
		KT 10	<input type="checkbox"/> 41210	<input checked="" type="checkbox"/> 41310	10 - 11 mm	10		
		KT 11	<input type="checkbox"/> 41211	<input checked="" type="checkbox"/> 41311	11 - 12 mm	10		
		KT 12	<input type="checkbox"/> 41212	<input checked="" type="checkbox"/> 41312	12 - 13 mm	10		
		KT 13	<input type="checkbox"/> 41213	<input checked="" type="checkbox"/> 41313	13 - 14 mm	10		
		KT 14	<input type="checkbox"/> 41214	<input checked="" type="checkbox"/> 41314	14 - 15 mm	10		
		KT 15	<input type="checkbox"/> 41215	<input checked="" type="checkbox"/> 41315	15 - 16 mm	10		
		KT oval		KTs 16	<input type="checkbox"/> 39901	<input checked="" type="checkbox"/> 39912	16 mm	10
				KTs 17	<input type="checkbox"/> 39900	<input checked="" type="checkbox"/> 39913	17 mm	10
		KT S1		KT oval	<input type="checkbox"/> 39930	-	approx. 8 x 4 mm	10
KT tele		KT S1	<input type="checkbox"/> 39931	-		10		
KT tele1		KT tele	<input type="checkbox"/> 39929	-	Telephone cable	10		
KT tele2		KT tele1	<input type="checkbox"/> 41257	-	Data cable RJ12	10		
		KT tele2	<input type="checkbox"/> 41258	-	Data cable RJ10 / RJ45	10		

\*Only valid for grey product types



### Accessories



# KT Grommets, small, multi



Type	Order No grey	Order No black	Clamping range	PU	Description
------	---------------	----------------	----------------	----	-------------

KT 2 2	39935	39936	2× Ø 2 mm	10	 KT 2 x
KT 2 3	39939	39940	2× Ø 3 mm	10	
KT 2 4	39906	39907	2× Ø 4 mm	10	
KT 2 5	41200	39904	2× Ø 5 mm	10	
KT 2 6	41201	39905	2× Ø 6 mm	10	
KT 2 7	41202	39916	2× Ø 7 mm	10	
KT 2 8	39917	39918	2× Ø 8 mm	10	
KT 4 2	39937	39938	4× Ø 2 mm	10	
KT 4 3	39914	39915	4× Ø 3 mm	10	
KT 4 4	39909	39911	4× Ø 4 mm	10	
KT 4 5	39908	39910	4× Ø 5 mm	10	
KT 4 6	39932	39933	4× Ø 6 mm	10	
KT-ASI	39902	39903	1 ASI-cable	10	 KT ASI2 rl
KT-ASI2 rl	39922	39924	2 ASI-cables	10	
KT-ASI2 ll	39921	39923	2 ASI-cables	10	

## Product description

Cable grommets KT small are used with the following cable entry frames:

KEL-U/KEL-ER/KEL (8 - 34) | KVT (38 - 42)

The model range KT small is designed for cable diameters from 2 to 17 mm.

## Assembly note

When installing the grommet, the smooth side of the grommet faces the middle of the cable entry frame.

### Specifications KT grey

Material	Elastomer
Flame class	UL94-Vo, self-extinguishing
IP rating	KT round, multi: IP54 KT special, multi: IP54
NEMA type rating	NEMA type 12 (acc. to UL 50E)
Temperature	- 40°C to + 90°C (static)
Properties	Halogen-free, silicone-free

### Specifications KT black

Material	Elastomer
Flame class	UL94-HB
IP rating	KT round, multi: IP54 KT special, multi: IP54
NEMA type rating	NEMA type 12 (acc. to UL 50E)
Temperature	- 30°C to + 90°C (static)
Properties	Higher chemical resistance

## Accessories

ST Plugs 49

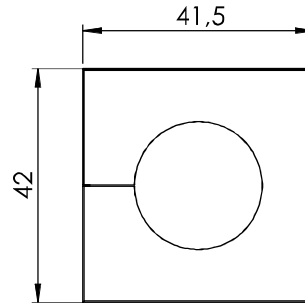
\*Only valid for grey product types

# KT

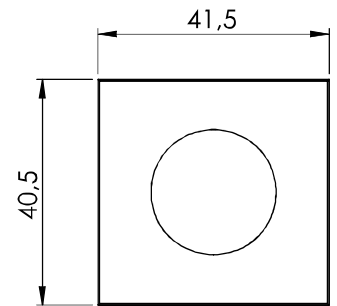
## Grommets, large



IP54 IP65



KT / KT-DPF large



KTMB large

1

### Product description

Cable grommets KT large accept a wide range of cable diameters from 16 to 35 mm. They are used with the following cable entry frames:

KEL-U/KEL-ER/KEL (8 - 34) | KVT (38 - 42)

ATG adapter grommets provide the possibility to hold a small KT grommet to reduce the clamping range down to 2 mm.




### Specifications KT grey

**Material** Elastomer  
**Flame class** UL94-Vo, self-extinguishing  
**IP rating** KT round, single: up to IP65 (in combination with KEL-ER frame) ATG/BTG: IP54  
**NEMA type rating** up to NEMA type 4X (acc. to UL 50E)  
**Temperature** - 40°C to + 90°C (static)  
**Properties** Halogen-free, silicone-free

### Specifications KT black

**Material** Elastomer  
**Flame class** UL94-HB  
**IP rating** KT round, single: up to IP65 (in combination with KEL-ER frame) ATG/BTG: IP54  
**NEMA type rating** up to NEMA type 4X (acc. to UL 50E)  
**Temperature** - 30°C to + 90°C (static)  
**Properties** Higher chemical resistance

Description	Type	Order No. grey	Order No. black	Clamping range	PU
-------------	------	----------------	-----------------	----------------	----

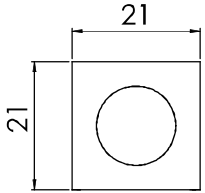
ATG		ATG	<input type="checkbox"/> 41253 <input checked="" type="checkbox"/> 41353	Adapter grommet	10
BTG		BTG	<input type="checkbox"/> 41252 <input checked="" type="checkbox"/> 41352	Blank grommet or 5 - 20 mm	10
KT round		KT 16	<input type="checkbox"/> 41216 <input checked="" type="checkbox"/> 41316	16 - 17 mm	10
		KT 17	<input type="checkbox"/> 41217 <input checked="" type="checkbox"/> 41317	17 - 18 mm	10
		KT 18	<input type="checkbox"/> 41218 <input checked="" type="checkbox"/> 41318	18 - 19 mm	10
		KT 19	<input type="checkbox"/> 41219 <input checked="" type="checkbox"/> 41319	19 - 20 mm	10
		KT 20	<input type="checkbox"/> 41220 <input checked="" type="checkbox"/> 41320	20 - 21 mm	10
		KT 21	<input type="checkbox"/> 41221 <input checked="" type="checkbox"/> 41321	21 - 22 mm	10
		KT 22	<input type="checkbox"/> 41222 <input checked="" type="checkbox"/> 41322	22 - 23 mm	10
		KT 23	<input type="checkbox"/> 41223 <input checked="" type="checkbox"/> 41323	23 - 24 mm	10
		KT 24	<input type="checkbox"/> 41224 <input checked="" type="checkbox"/> 41324	24 - 25 mm	10
		KT 25	<input type="checkbox"/> 41225 <input checked="" type="checkbox"/> 41325	25 - 26 mm	10
		KT 26	<input type="checkbox"/> 41226 <input checked="" type="checkbox"/> 41326	26 - 27 mm	10
		KT 27	<input type="checkbox"/> 41227 <input checked="" type="checkbox"/> 41327	27 - 28 mm	10
		KT 28	<input type="checkbox"/> 41228 <input checked="" type="checkbox"/> 41328	28 - 29 mm	10
		KT 29	<input type="checkbox"/> 41229 <input checked="" type="checkbox"/> 41329	29 - 30 mm	10
		KT 30	<input type="checkbox"/> 41230 <input checked="" type="checkbox"/> 41330	30 - 31 mm	10
		KT 31	<input type="checkbox"/> 41231 <input checked="" type="checkbox"/> 41331	31 - 32 mm	10
		KT 32	<input type="checkbox"/> 41232 <input checked="" type="checkbox"/> 41332	32 - 33 mm	10
		KT 33	<input type="checkbox"/> 41233 <input checked="" type="checkbox"/> 41333	33 - 34 mm	10
		KT 34	<input type="checkbox"/> 41234 <input checked="" type="checkbox"/> 41334	34 - 35 mm	10

\*Only valid for grey product types



# KT-DPF | KTMB

## Grommets, multi-range



KT-DPF / KTMB small



KT-DPF-B



Type	Order No.	Size KT	Clamping range	PU	Description
KT-DPF-A	41260	KT small	3 - 12 mm	10	 KT-DPF-A
	41360				
KT-DPF-B	41261	KT large	4 - 18 mm	10	 KT-DPF-C
	41361				
KT-DPF-C	41262	KT large	14 - 26 mm	10	 KT-DPF-C
	41362				
KTMB-A	41432	KT small	2.5 - 6.5 mm	10	 KTMB-D
KTMB-B	41434	KT small	4 - 7.5 mm	10	
KTMB-C	41436	KT small	6.5 - 10 mm	10	
KTMB-D	41438	KT small	9.5 - 13 mm	10	
KTMB-E	41440	KT small	13 - 16 mm	10	
KTMB-G	41460	KT large	13 - 18 mm	10	 Cross section KTMB
KTMB-H	41465	KT large	18 - 23 mm	10	 KTMB-I
KTMB-I	41470	KT large	23 - 28 mm	10	
KTMB-J	41475	KT large	28 - 33 mm	10	
KTMB-K	41480	KT large	2x 13 - 18 mm	10	 KTMB-K

\*Only valid for grey product types

### Product description

The KT-DPF / KTMB grommets accept a wide range of cable diameters. A great benefit when the exact cable diameter is not known in advance. The KTMB grommets are not split and therefore only usable for cables without connectors. Cutting of KT-DPF grommets: Cable diameter less 20%.

### Specifications grey

Material	Elastomer
Flame class	UL94-Vo, self-extinguishing
IP rating	IP54
NEMA type rating	NEMA type 12 (acc. to UL 50E)
Temperature	- 40°C to + 90°C (static)
Properties	Halogen-free, silicone-free

### Specifications black

Material	Elastomer
Flame class	UL94-HB
IP rating	IP54
NEMA type rating	NEMA type 12 (acc. to UL 50E)
Temperature	- 30°C to + 90°C (static)
Properties	Higher chemical resistance

### KMS Cable template

The correct size of the KT grommets can easily be determined by using the stainless steel cable template.

- Determining the diameter of the cable using the cable template
- Selecting the KT grommets according to the data on the cable template

Order No. 39800



# DT

## Membrane cable grommets



1

### Product description

The DT cable grommets are designed for cables without preassembled connectors. A large number of cables can be routed utilising minimal space.

DT grommets are designed to fit in KT large grommet spaces of the following products:

KEL-U/KEL-ER/KEL (8 - 34) | KVT (38 - 42)

The DT grommets are also perfectly suitable for the assembly of subsequently terminated cable harnesses.

### Advantages & benefits

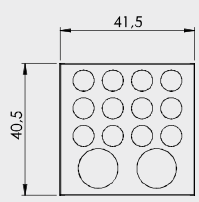
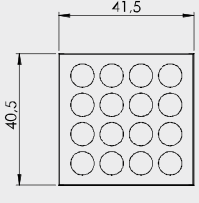
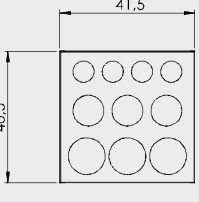
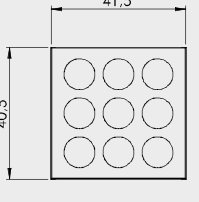
- Combination of routing pre-terminated cables and cables without connectors with one cable entry frame
- Enables sub-assembly of cable harnesses
- High cable density

### Specifications

Material	Elastomer
Flame class	UL94-V0, self-extinguishing
IP rating	IP54
NEMA type rating	NEMA type 12 (acc. to UL 50E)
Temperature	- 40°C to + 90°C (static)
Properties	Halogen-free, silicone-free

### Accessories

ST-B Plugs 76


Description	Type	Order No.	Number of cables	PU
	DT 1	41500	12× max. 6.5 mm 2× max. 12.2 mm	10
	DT 2	41510	16× max. 7.1 mm	10
	DT 3	41520	4× max. 6.5 mm 3× max. 9.5 mm 3× max. 11.3 mm	10
	DT 4	41530	9× max. 9.5 mm	10

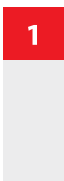


# ST

## Plugs for cable grommets



Type	Order No.	Diameter D	Length L	PU	Description
ST 2	42909	2 mm	25 mm	25	
ST 3	42901	3 mm	25 mm	25	
ST 4	42908	4 mm	25 mm	25	
ST 5	42906	5 mm	25 mm	25	
ST 6	42903	6 mm	25 mm	25	
ST 7	42905	7 mm	25 mm	25	
ST 8	42899	8 mm	20 mm	25	
ST 9	42897	9 mm	20 mm	25	
ST 10	42895	10 mm	20 mm	25	
ST 11	42893	11 mm	20 mm	25	
ST 12	42891	12 mm	20 mm	25	
ST 13	42889	13 mm	20 mm	25	
ST 14	42887	14 mm	20 mm	25	
ST 15	42885	15 mm	20 mm	25	
ST 16	42883	16 mm	20 mm	25	
ST 17	42881	17 mm	20 mm	25	
ST ASI	42877	-	25 mm	25	
<b>NEW</b> Plug for KEL threaded bushings	99142	10 mm	4 mm	100	



### Product description

Plugs are used to close either KT or QT grommets which are not equipped with cables. IP ratings of the grommets remain.

Perfect for applications where cables have been removed or might be routed at a later stage.

### Advantages & benefits

- Sealing unused cable grommets

### Specifications

Material	Polyamide (PA), white
Flame class	UL94-Vo, self-extinguishing
IP rating	IP rating of grommets remains
NEMA type rating	NEMA type 12 (acc. to UL 50E)
Temperature	- 40°C to + 120°C
Properties	Halogen-free, silicone-free

### Compatible with

KT Cable grommets	44 - 46
QT Cable grommets	56