

# Solutex Water Treatment Systems

## ECONOMICAL

These economical machines provide a great way to treat your wastewater without chemicals.

Reduce your waste and save on disposal costs.

## TWO VERSIONS

Standard Ci series use a recbag for collection of waste residue.

CiQ series has rotating boiler scraper system that keeps walls and base free of solid build-up and requires no

Recbag.

## ENVIRONMENT FRIENDLY

Treat wastewater and reduce waste. Less waste for removal from site. No emissions from plant. Can be part of ISO 14000.

## SAFE AND EASY TO USE

All machines CE approved.

Simple controls for ease of use.

## FREE TEST ANALYSIS OF YOUR WASTE WATER

Send us a sample of your waste water for laboratory testing. We will provide analysis results and recommend suitable equipment.



## Economic Wastewater Concentrators



- ◆ Quiet in operation
- ◆ No air pollution
- ◆ Saves money
- ◆ Helps the environment
- ◆ Reduce waste disposal costs
- ◆ Easy to install
- ◆ Simple to operate
- ◆ Leasing plans available

The Ci series is based on the well proven range of solvent distillers and works in the same way. Unlike the solvent distillers, the Ci series is not required to be explosion-proof and because water requires more energy to evaporate it, the units are fitted with additional heating power and a timer that works up to 24 hours.



The automatic units are easy to install and simple to use.

Recycled water for reuse or disposal to drain.

# Ci Series

# Solutex Water Treatment Systems

## Economic Wastewater Concentrators

### TECHNICAL SUPPORT

Help and advice is available free before, during and after purchase.

We will help you select the right machine and advise on installation.

We can also install, commission and train operators if required.

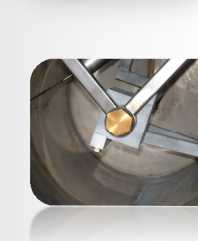
### SERVICE

Like any machinery, our concentrators require servicing periodically. Our engineers are equipped to perform services at your premises if required.

Consumable items and spare parts are readily available from stock.

### TURNKEY SOLUTIONS

For those requiring a turnkey solution to their recycling needs, we can design and install everything required to meet your demands.



The Standard Ci series models are fitted with stainless steel boiler and condensers. The standard concentrators use air cooled condensers but water cooled versions are available as a no cost option in most cases.

The concentrators are available in load capacities of 15, 30, 60, 120 and 160 litres. The actual load capacity should not be confused with the total boiler capacity which is always greater. Our distillers are constructed in a way that always provides sufficient free space inside the boiler to ensure efficient operation. The model number denotes the load capacity, a Ci15 holds 15 litres but the overall capacity is 20 litres.



### OPTION

Recbag for collection of solid residues



All models are equipped with an LCD with memory function timer, total time, remaining process time and service due



### OPTION

Manual valve for liquid residue unloading from the boiler.

### Distatic CiQ series option

Rotating Scraper system inside boiler requires no Recbags.

Available on 60 and 120 models.

# Ci Series

# Solutex Water Treatment Systems

## ROTATING BOILER

All models feature a boiler that can easily be rotated. This allows user's to unload liquid residues or perform maintenance easily. On large models power assistance is provided.

## OPTIONS

A wide range of options are available including:

- Semi-automatic loading
- Manual valve for residue unload
- Load pipe for connecting to a pump
- Anti-foam discs
- Boiler viewing glass
- Collection tanks

## REFERENCES

With 38,000 units installed worldwide you can be sure that there is a unit working in a similar application to yours. Many of the worlds leading companies can testify to the quality, reliability and cost effectiveness of the equipment.

## Technical Information

### WORKING PRINCIPLE

The units use the principle of distillation to produce purified water for re-use or disposal. Through this simple distillation process, they separate the contaminants (resins, pigments, paints, oils inks, etc.) from water. The boiling of the polluted water takes place in a boiler made of stainless steel that forms a unique unit together with a heating jacket filled with diathermic oil that is heated by one or more electrical heating elements. The vapours are conveyed to a condenser cooled by air or water. The treated water flows into a container. There are no emissions from the unit during operation.

### CLEANING

Cleaning of the unit is quick and easy. For liquid residues, the boiler is easily rotated to discharge the contents (5). In the case of solid residues (paints, resins, polymers, pigments etc.) the concentrate is collected inside a special disposable bag named *Recbag*.

This avoids manual cleaning of the boiler surface. Liquid residues can also be discharged via the optional manual unload valve.

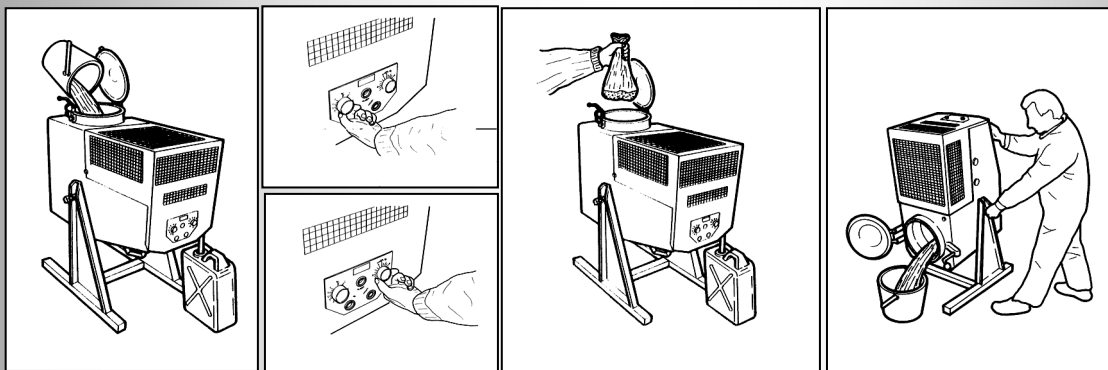
### SAFETY

The unit operates at atmospheric pressure. Safety devices monitor heating and distillate temperatures and the machine stops automatically if a fault is detected. All units are manufactured in accordance with European standards and are CE marked.

### OPERATING

The distillation cycle is fully automatic. The simply loads the wastewater (1), setting the distillation time and temperature (2). The water automatically discharges into a Can or tank (3). Finally, unloading the solid or liquid residues (4-5).

# Ci Series



MODEL	BOILER CAPACITY	LOADING CAPACITY	POWER	PROTECTION	DIMENSIONS	WEIGHT
	LITRES	LITRES	kW		mm	kg
Ci15 Ax	20	15	1.62	AD-T IP44	550 x 650 x 1300	54
Ci30 Ax	40	30	3.22	AD-T IP44	600 x 1000 x 1160	110
Ci60Ax	103	60	6.60	AD-T IP44	690 x 1100 x 1600	180
Ci120Ax	210	120	13.60	AD-T IP44	1510 x 1140 x 2060	361
Ci160 Ax	250	160	22	AD-T IP44	1510 x 1200 x 2100	433



# Wastewater Concentration Systems

## TECHNICAL SUPPORT

Help and advice is available free before, during and after purchase. We will help you select the right machine and advise on installation. We can also install, commission and train operators if required.

## SERVICE

Like any machinery, our concentrators require servicing periodically. Our engineers are equipped to perform services at your premises if required.

Consumable items and spare parts are readily available from stock.

## TURNKEY SOLUTIONS

For those requiring a turnkey solution to their recycling needs, we can design and install everything required to meet your demands.

For more information on any of our products or services please contact us :



Solutex Ltd

Unit 1, Ellesmere Business Park

Ellesmere SY12 0EW United Kingdom

Tel: (0) 1691 622225 Fax: (0) 1691 622277

Email: [sales@solutex.co.uk](mailto:sales@solutex.co.uk)

Web: [www.solutex.co.uk](http://www.solutex.co.uk)