

# HPR Series Vacuum Evaporation Systems

with internal boiler scraper System

Water treatment made easy!

**From 240 to 2,400 litres per day**

**Evaporators for the treatment of industrial wastewater.**

Recognised as BAT (Best Available Technology) under European Directives for wastewater treatment. Evaporators are completely automatic with microprocessor control for continuous operation with minimum operator assistance. Evaporators provide high concentration ratios with a high quality distillate, good levels of separation with the option to recycle. Waste volumes for disposable can be reduced significantly with up to 98% of wastewater for re-use.



- ◆ Fully automatic
- ◆ Energy efficient
- ◆ Easy to install
- ◆ Easy to operate
- ◆ Saves money
- ◆ Helps the environment
- ◆ Instant reuse of recycled water
- ◆ Reduce waste disposal costs
- ◆ Meet consent limits for discharge
- ◆ Suitable for numerous applications
- ◆ Wide range of options available
- ◆ Leasing plans available

*The easy way to treat industrial wastewater*

## SAVES MONEY

Can reduce water consumption and waste disposal costs.

## ENVIRONMENT FRIENDLY

Recycle water and reduce waste. Less waste for removal from site. Reduce storage of waste liquids on site. Can be part of ISO 14000.

## SAFE AND EASY TO USE

All machines CE approved. Simple controls for ease of use.

## FREE TEST ANALYSIS OF YOUR WASTE WATER

Send us a sample of your waste water for laboratory testing. We will provide analysis results and recommend suitable equipment.



## FREE CONSULTATION

We can visit site, assess your processes and advise on the best way to treat your waste water.



# Technology Overview

## MICROPROCESSOR CONTROL



Total process control with fault find function.

## HEAT PUMP (HP) SYSTEM



Heating and cooling in one single unit with low energy consumption.

## QUALITY

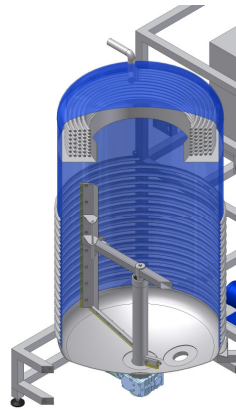
High quality robust construction



with worldwide parts availability.

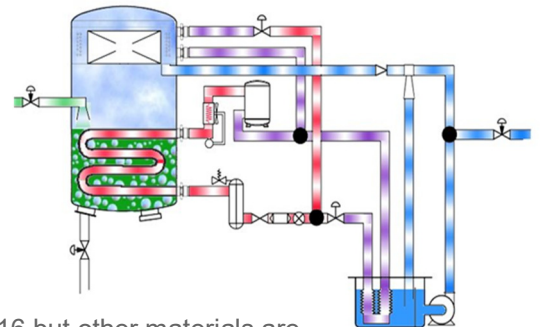
## SAFE TO USE

All machines CE approved.



HPR series Vacuum evaporators feature an internal boiler rotating scraper with brushes that keep boiler surfaces free from the build up of encrustations and help maintain efficient heat transfer. This produces a highly concentrated residue. Some ideal applications include wastewater from painting, printing or any water containing encrusting products. Evaporators can remove suspended solids, heavy metals, colour pigments and other non volatile products producing a distillate that in most cases can go the sewer system without further treatment in compliance with local regulation or be recycled.

By exploiting the technologies of heat pump and vacuum distillation a maximum yield can be achieved with low energy consumption. Under vacuum the boiling point of water is reduced to 35 – 40° C, using heat pump technology the same circuit is used for heating and cooling and the amount of energy required is reduced considerably.



Standard units constructed in stainless steel 316 but other materials are available depending on the application.

Versions available with a boiler opening top for easy cleaning and Maintenance.

Controlled by a programmable PLC with easy process control.

Evaporators are fully automatic and can operate 24/7 unattended and only minimal intervention by personnel is required. They require no pumps for waste loading or distillate unloading. Process residues are unloaded by valve or optional pump.

A synoptic panel shows all process functions. On larger models a touch screen PLC provides even greater control.

Wastewater Evaporators are supplied fully assembled and only need connection to services making them easy to install.



## HIGH QUALITY DISTILLATE



All models produce a high quality distillate.



## HEAT PUMP TECHNOLOGY

## COMPACT, SKID MOUNTED

Supplied ready to connect to your services.

## INDUSTRIES

Health Care  
Chemicals  
Mechanical surface treatment  
Biogas  
Food  
Oil & Gas  
Power  
Mining  
Landfill  
Printing  
Painting

For more information on any of our products or services please contact us :

Email: [info@solutex.co.uk](mailto:info@solutex.co.uk)

Telephone:

+44 (0) 1691 622225

Web:

[www.solutex.co.uk](http://www.solutex.co.uk)

# Standard Models

WT 0010-HP-R	240 litres per day	1,2,3,4,5,6	Equipped with cycle timer Opening boiler top
WT 0020-HP-R	480 litres per day	1,2,3,4,5,6	Equipped with microprocessor and synoptic display panel
WT 0030-HP-R	720 litres per day	1,2,3,4,6,	Equipped with microprocessor and synoptic display panel
WT 0055-HP-R	1200 litres per day	2,3,4,6,	Equipped with microprocessor and synoptic display panel
WT 0100-HP-R	2160 litres per day	2,3,4,6	Equipped with PLC Siemens S7-1200 touch screen 5.7" Opening boiler top
WT 0100-HP-R	2160 litres per day	2,3,4,6	Equipped with PLC Siemens S7-1200 touch screen 5.7"

## Options

- 1 Automatic waste discharge pump with DN 15
- 2 Automatic waste discharge pump with DN 25
- 3 Anti-foam Pump
- 4 Higher frame for discharge of residue
- 5 Microprocessor and synoptic display panel
- 6 Automatic cleaning system
- 7 PLC Siemens S7-1200 touch screen 5.7"

\* based on mains water +/- 10%

## EASY INSTALLATION



Machines are delivered fully assembled, skid mounted and ready to work. Connection to services is all that is required in most cases. If you prefer, we can install, commission and train operators providing a turnkey package.