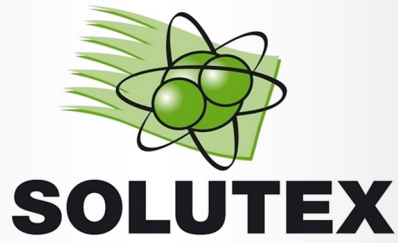


Paint Spray Gun Washer Catalogue



High quality equipment for your paint facility, accept nothing less

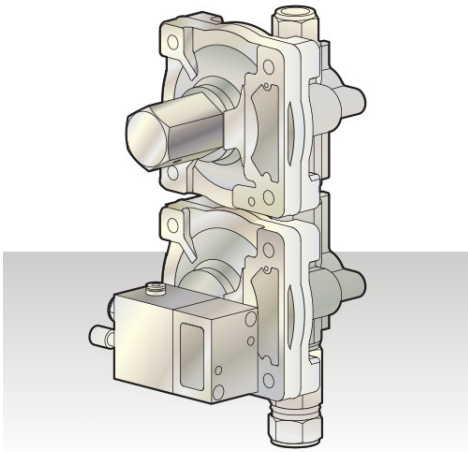
FOR WATER BASED PAINTS

English 2018



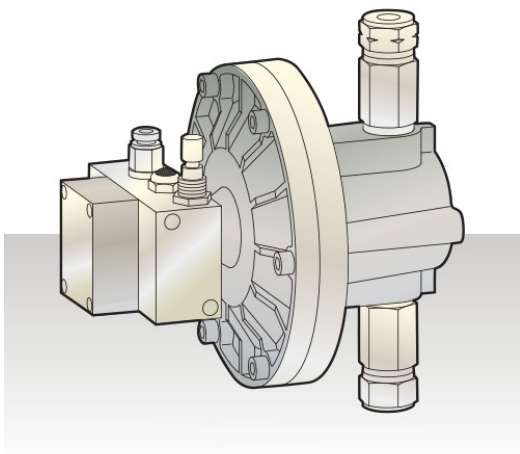
OPTION KIT M

- Kit made up of diaphragm MP pump, liquid fed brush and hoses
- For washing with brush fed recirculating liquid
- Factory fit option only



OPTION KIT F

- Kit made up of diaphragm pump PA, push button and hoses
- For final wash with clean thinner
- Set up in factory and before unit delivery only



P11 Manual



- Manual wash of waterborne paint
- Perfect for disposable cup system
- Venturi pump for washing with recirculating liquid
- Nebulizer for clean water final rinse
- Absorbent cloth collects paint sludge
- Air gun for final drying
- 100% stainless steel
- ATEX II 2G



OPTIONAL: KIT M

Dimensions	Weight	Operation	Air Pressure
490 x 690 x 1490 mm	38 kg	pneumatic	Min 6 - max 10 bar

177X Mini Water



- Manual wash of waterborne paint
- Pre-wash with brush fed by pump with recirculating fluid
- Nebulizer for clean water final rinse
- Brush can be connected to water supply
- Air gun for final drying
- Water / paint separation kit included
- 100% stainless steel
- ATEX II 2G

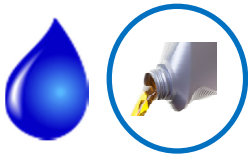


Dimensions	Weight	Operation	Air Pressure
450 x 660 x 1335 mm	44 kg	pneumatic	Min 6 - max 10 bar

182CX Multi Water



II 2G



- Manual and automatic wash of water-borne paint
- Vapour exhaust system
- Automatic wash with recirculating liquid fed by diaphragm pump
- Final rinse with clean water fed by venturi pump and nebulizer
- Brush can be connected to water supply
- Air gun for final drying
- Water / paint separation kit included
- Colour tests allowed
- 100% stainless steel
- ATEX II 2G

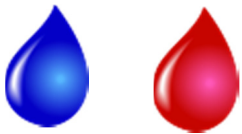


Dimensions	Weight	Operation	Air Pressure	Exhaust duct
450 x 685 x 1500 mm	49 kg	pneumatic	Min 6 - max 10 bar	120 mm

250Ax—250BX Paint Work Bench



II 2G



- Work bench
- 100% stainless steel
- Ideal for mixing, stirring and diluting waterborne and solvent based paint
- **Model 250BX only:** Vapour extraction From work area and 2 venturi pumps for dosing the thinner or liquid to be diluted
- ATEX II 2G

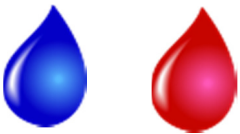


Dimensions	Weight	Operation	Air Pressure	Exhaust duct
1090 x 690 x 1465 mm	62 kg	Pneumatic	Min 6 - max 10 bar	150 mm

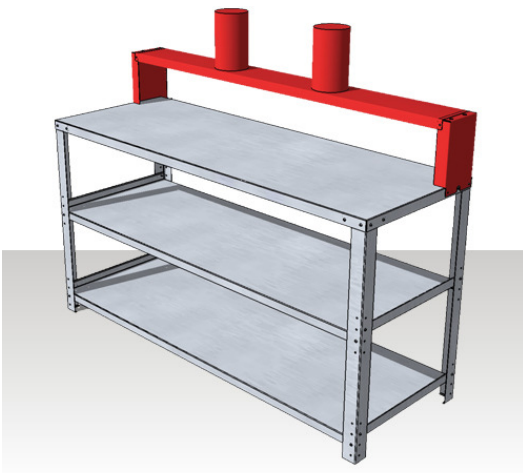
255 Paint Work Bench



II 2G



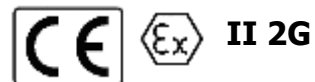
- Workbench
- 100% stainless steel
- Ideal for placing, mixing, stirring and diluting waterborne and solvent based paint
- Vapour exhaust from work area
- Two shelves adjustable in height
- Possibility to work in one or both



Self assembly
Ducting not included

Dimensions	Weight	Operation	Air Pressure	Exhaust duct
1800 x 645 x 1210 mm	60 kg	Pneumatic	8 bar	2 x 150 mm

110 Water Paint Separation Kit



- Ideal for paint / water separation
- Includes a plastic container and a perforated container to support filters
- Air mixer to stir water with coagulating powder



Dimensions	Weight	Tank capacity
600 x 400 x 500 mm	4.5 kg	50 litres

189 Active Carbon Filter

- Designed for the removal of exhausted vapours
- Can be adapted to all spray gun washers
- Active carbon can be replaced when exhausted
- Abatement percentage >50%



Dimensions	Weight	Carbon content
310 x 310 x 780 mm	28 kg	12 kg

REMOVER RE-5/RE-10 Remover Detergent

- Concentrated detergent for diluting with water
- New formulation with very low foam
- Used cold: it improves spray gun washing also with dry paint
- Used hot: it halves washing time and allows a thorough cleaning with dried paint too
- Keeps pump, hoses and washing nozzles clean
- Prevents dirt forming inside spray gun washer body
- Product is re usable after coagulation
- 5-15% dilution with water



5 and 10 litre packs

Flock Coagulating Powder

- Coagulating powder for water / paint separation
- 2 kg or 25 kg packs





Solutex Ltd

Unit 1, Ellesmere Business Park

Ellesmere, SY12 0EW United Kingdom

Tel: +44 (0) 1691 622225 Fax: +44 (0) 1691 622277

www.solutex.co.uk info@solutex.co.uk

