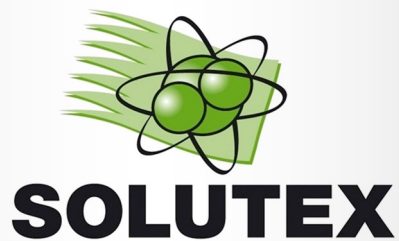


Paint Spray Gun Washer Catalogue



High quality equipment for your paint facility, accept nothing less

FOR SOLVENT PAINTS

English 2018



INTRODUCTION

Our range of paint spray gun washers are robust and manufactured to a high quality. We use our own high quality pumps designed and built for long life and trouble free operation. Many Washers are built completely in stainless steel to provide long life. You are sure to find a washer in our extensive range that meet your requirements.

The solvent spray gun washers are designed specifically for use with thinners or gunwash solvents and are ATEX certified for use in flammable zones such as car body shops. Unlike many washers on the market many of our Washers come with inbuilt air extraction systems that help protect the operator when in use. Most of our Washers can be used for colour tests too making them truly versatile.

Choose from the following types:

Manual and automatic washers for use with solvent

Combi washer for solvent with inbuilt solvent distiller

Dual Washers for use with solvent and water based paints. See separate brochure.

OPTIONAL: KIT M (for thinner) diaphragm pump type MP for manual wash with brush fed with cleaner

If you need any assistance in choosing your Washer, simply phone or email us and we can recommend the best way to clean your parts.



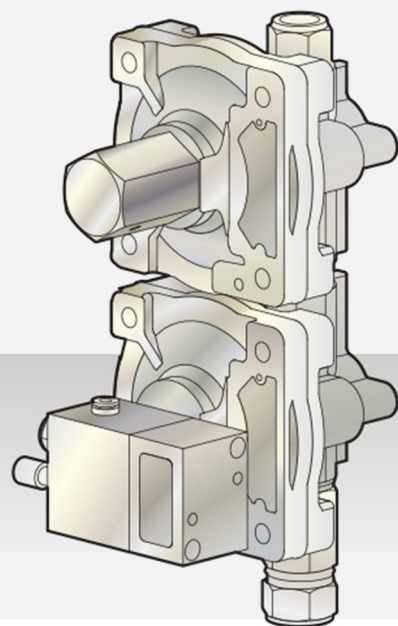
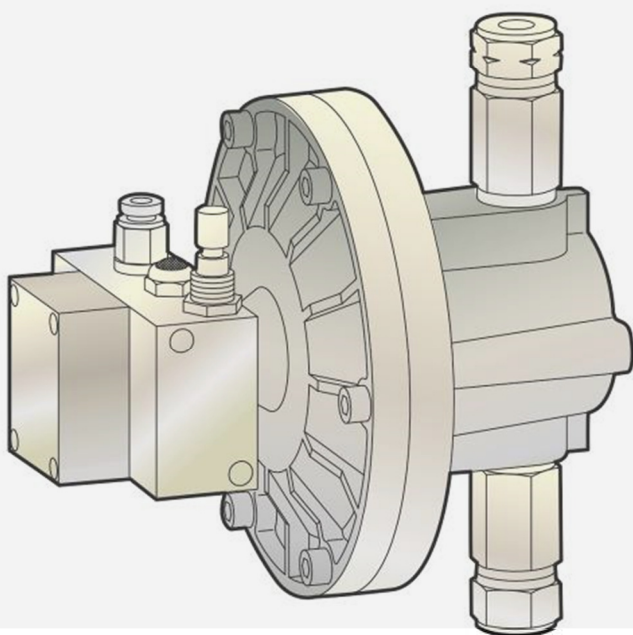
+44 (0) 1691 622225



sales@solutex.co.uk

Diaphragm Pump

The heart of our machines



Diaphragm pump with enhanced flow

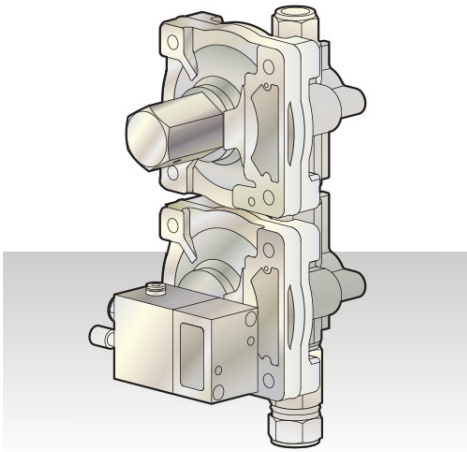
Reliable and easy to maintain

High quality construction designed for long life

Certified CE and ATEX II 2 G

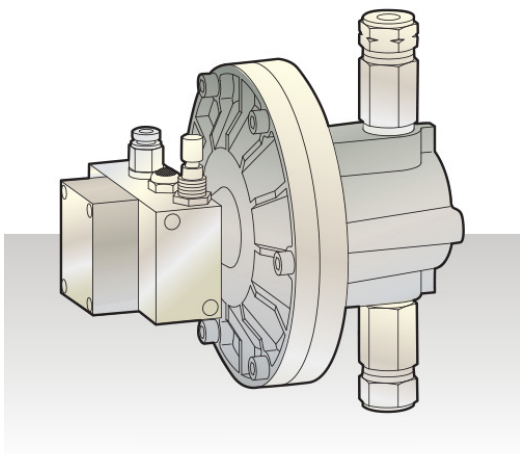
OPTION KIT M

- Kit made up of diaphragm MP pump, liquid fed brush and hoses
- For washing with brush fed recirculating liquid
- Factory fit option only



OPTION KIT F

- Kit made up of diaphragm pump PA, push button and hoses
- For final wash with clean thinner
- Set up in factory and before unit delivery only



P10 Manual



II 2G

- All stainless steel
- Manual wash of solvent based paint
- Automatic vapour extraction
- Pre-wash with venturi pump feeding recirculating thinner
- Venturi pump feeding clean thinner
- Final rinse with nebulizer and clean thinner
- Colour tests allowed
- ATEX II 2G

OPTIONAL: KIT M



Dimensions	Weight	Operation	Air Pressure	Exhaust duct
490 x 690 x 1490 mm	42 kg	Pneumatic	Min 6 - max 10 bar	120 mm

M10 Manual



II 2G



- Manual wash of solvent based paint
- Automatic vapour extraction
- Pre-wash with venturi pump feeding recirculating thinner
- Venturi pump feeding clean thinner
- Final rinse with nebulizer and clean thinner
- Colour tests allowed
- ATEX II 2G
- 100% stainless steel



OPTIONAL: KIT M



Dimensions	Weight	Operation	Air Pressure	Exhaust duct
690 x 690 x 1490 mm	54 kg	Pneumatic	Min 6 - max 10 bar	120 mm

173B—173C Automatic



II 2G



- Automatic and manual wash of solvent based paint
- Automatic vapour extraction
- Automatic wash with recirculating thinner fed by diaphragm pump
- **Model 173C only** final wash with clean thinner fed by extra diaphragm pump
- Final rinse with nebulizer and clean thinner
- ATEX II 2G



Dimensions	Weight	Operation	No of guns	Air Pressure	Exhaust duct
450 x 660 x 1100 mm	42 kg	Pneumatic	1	Min 6 - max 10 bar	120 mm

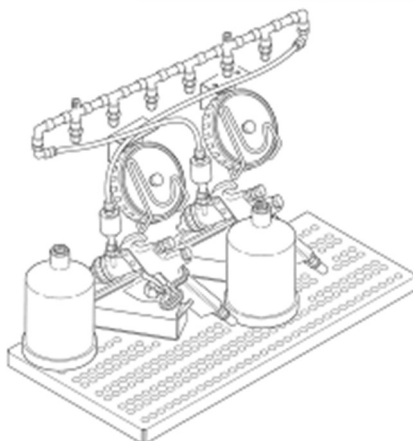
163AX—163 DX Automatic



II 2G



- Automatic and manual wash with thinner
- Automatic vapour extraction
- Can wash up 2 spray guns per cycle
- Automatic wash with recirculating liquid fed by diaphragm pump
- For gravity feed guns only
- Venturi pump feeding clean liquid
- Final rinse with nebulizer and clean thinner
- Colour tests allowed
- Very compact unit
- 100% stainless steel
- ATEX II 2G



Dimensions	Weight	Operation	No of guns	Air Pressure	Exhaust duct
500 x 720 x 1480 mm	49 kg	Pneumatic	2	Min 6 - max 10 bar	120 mm

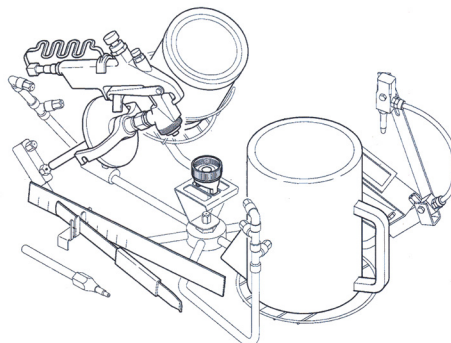
M30 and M30F Manual



II 2G



- Automatic and manual wash of solvent based paint
- Automatic vapour exhaust from work area
- Automatic wash with diaphragm pump feeding recirculating liquid
- Wash with Venturi pump feeding recirculating thinner
- Pump stopped if lid opened during automatic washing cycle
- Venturi pump feeding clean liquid
- Nebulizer for final rinse with clean thinner
- Air pressure regulator for colour testing
- 100% stainless steel
- ATEX II 2G
- Option KIT M



Model M30 F only

Dimensions	Weight	Operation	No of guns	Air Pressure	Exhaust duct
690 x 690 x 1490 mm	67 kg	Pneumatic	2	Min 6 - max 10 bar	120 mm

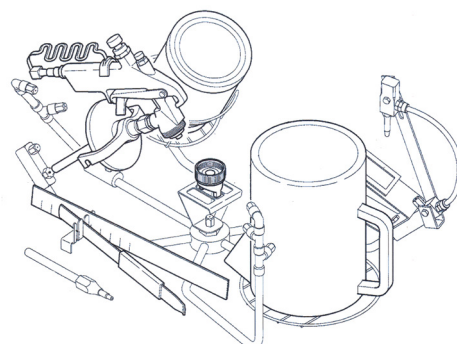
1801B Washer Distiller



II 2G



- Automatic and manual wash of solvent based Paint with solvent recycling
- Automatic vapour extraction
- Automatic wash with recirculating liquid fed by diaphragm pump
- **Model 180B / 180BX only** : Final wash with clean thinner fed by extra diaphragm pump operated by push-button
- **Model 180CX only**: Final wash with clean thinner fed by diaphragm pump operated by timer
- Wash with recirculating liquid fed by venturi pump (except 180A)
- Venturi pump feeding clean liquid
- Final rinse with nebulizer and clean thinner
- Air pressure regulator for colour tests
- Models 180BX / 180CX 100% stainless steel
- ATEX II 2G

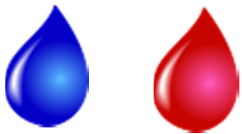


Dimensions	Weight	Operation	No of guns	Air Pressure	Exhaust duct
510 x 720 x 1380 mm	150 kg	Pneumatic	2	Min 6 - max 10 bar	150 mm

250Ax—250BX Paint Work Bench



II 2G



- Work bench
- 100% stainless steel
- Ideal for mixing, stirring and diluting waterborne and solvent based paint
- **Model 250BX only:** Vapour extraction From work area and 2 venturi pumps for dosing the thinner or liquid to be diluted
- ATEX II 2G

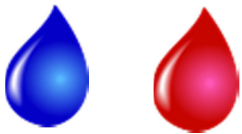


Dimensions	Weight	Operation	Air Pressure	Exhaust duct
1090 x 690 x 1465 mm	62 kg	Pneumatic	Min 6 - max 10 bar	150 mm

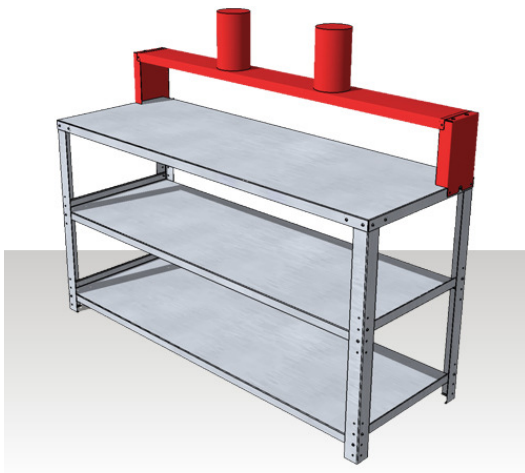
255 Paint Work Bench



II 2G



- Workbench
- 100% stainless steel
- Ideal for placing, mixing, stirring and diluting waterborne and solvent based paint
- Vapour exhaust from work area
- Two shelves adjustable in height
- Possibility to work in one or both



Self assembly

Ducting not included

Dimensions	Weight	Operation	Air Pressure	Exhaust duct
1800 x 645 x 1210 mm	60 kg	Pneumatic	8 bar	2 x 150 mm



Solutex Ltd

Unit 1, Ellesmere Business Park

Ellesmere, SY12 0EW United Kingdom

Tel: +44 (0) 1691 622225 Fax: +44 (0) 1691 622277

www.solutex.co.uk info@solutex.co.uk

