

# Paint Spray Gun Washer Catalogue



**SOLUTEX**

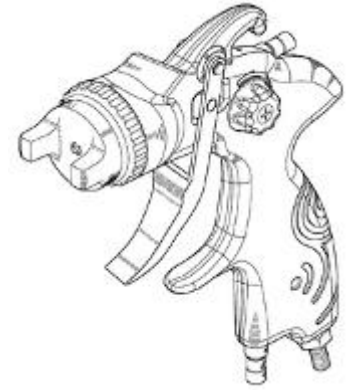


High quality equipment for your paint facility, accept nothing less

English 2018



# INDEX



**Introduction**.....3

The pump.....4

Optional Kits.....5

## **Spray Gun Washers for Water borne paints**

P11..... 6

177X..... 7

182CX..... 8

## **Spray Gun Washers Combined for water borne and solvent paints**

135..... 9

L10..... 10

L20 M..... 11

G40 M..... 12

G60 F..... 13

## **Spray Gun Washers for Solvent paints**

P10..... 14

M10..... 15

173B—173C..... 16

163AX..... 17

M30—M30F..... 18

1801B..... 19

## **Automatic Can Washer for Water based detergents or solvent**

174B..... 20

## **Equipment and consumables**

250AX—250BX..... 21

255 ..... 22

110—189..... 23



WATER



THINNER



REMOVER DETERGENT

## INTRODUCTION

Our range of paint spray gun washers are robust and manufactured to a high quality. We use our own high quality pumps designed and built for long life and trouble free operation. Some Washers are built completely in stainless steel while others feature all liquid contacts parts made in stainless steel, all designed to provide long life. You are sure to find a washer in our extensive range that meet your requirements.

The solvent spray gun washers are designed specifically for use with thinners or gunwash solvents and are ATEX certified for use in flammable zones such as car body shops. Unlike many washers on the market many of our Washers come with inbuilt air extraction systems that help protect the operator when in use. Most of our Washers can be used for colour tests too making them truly versatile.

The water based Paint spray gun washers are designed specifically for use with water and can be used with our additive REMOVER for outstanding results. Many of the water washers have an inbuilt water treatment kit for water recycling and waste reduction.

### **Choose from the following types:**

Manual and automatic washers for use with solvent

Manual and automatic washers for use with water.

Dual Washers for use with water and solvent

Multi Washers for use with water OR solvent

Combi washer for solvent with inbuilt solvent distiller

To make identification simple, look for the following symbols when selecting your Washer:

**OPTIONAL: KIT M (for thinner) diaphragm pump type MP for manual wash with brush fed with cleaner**

**OPTIONAL: KIT F extra diaphragm pump type PA for final automatic wash in tank**



Suitable for washing with water.



Suitable for washing with solvent

If you need any assistance in choosing your Washer, simply phone or email us and we can recommend the best way to clean your parts.



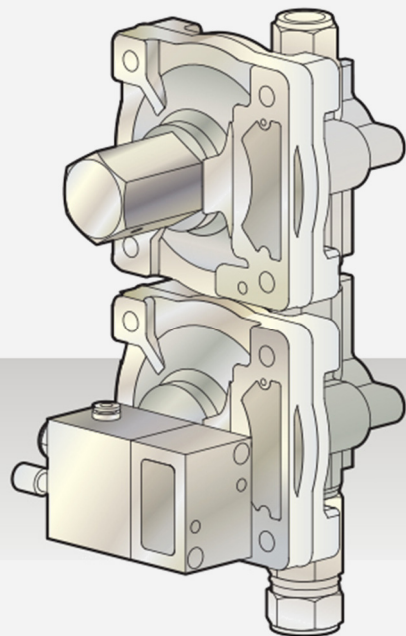
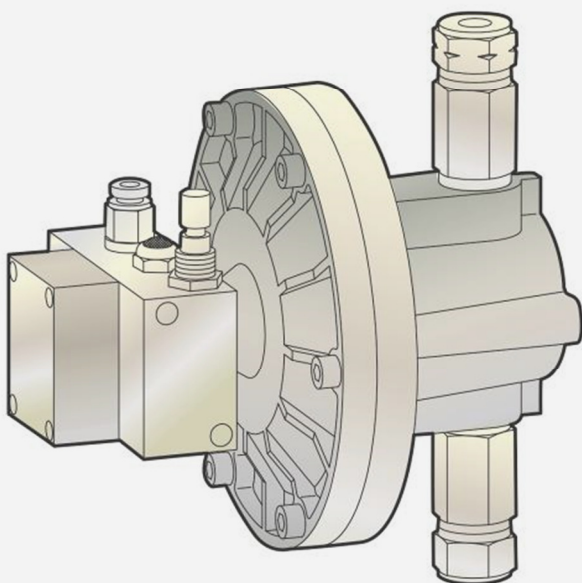
**+44 (0) 1691 622225**



**sales@solutex.co.uk**

# Diaphragm Pump

**The heart of our machines**



**Diaphragm pump with enhanced flow**

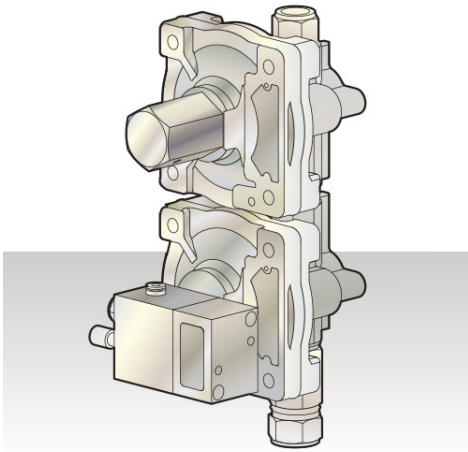
**Reliable and easy to maintain**

**High quality construction designed for long life**

**Certified CE and ATEX**

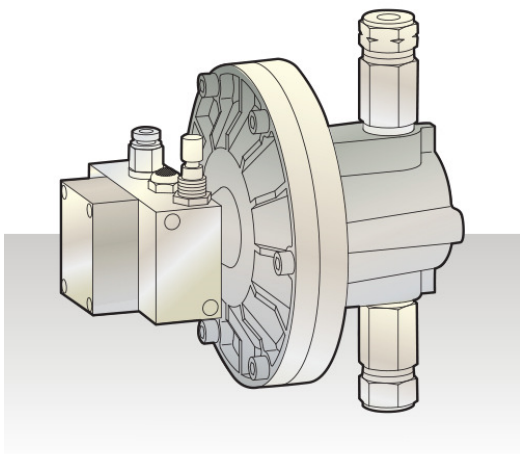
## OPTION KIT M

- Kit made up of diaphragm MP pump, liquid fed brush and hoses
- For washing with brush fed recirculating liquid
- Factory fit option only



## OPTION KIT F

- Kit made up of diaphragm pump PA, push button and hoses
- For final wash with clean thinner
- Set up in factory and before unit delivery only



## P11 Manual with water



- Manual wash of waterborne paint
- Perfect for disposable cup system
- Venturi pump for washing with recirculating liquid
- Nebulizer for clean water final rinse
- Absorbent cloth collects paint sludge
- Air gun for final drying
- 100% stainless steel
- ATEX II 2G

### OPTIONAL: KIT M



Dimensions	Weight	Operation	Air Pressure
490 x 690 x 1490 mm	38 kg	pneumatic	Min 6 - max 10 bar

## 177X Manual with Water



- Manual wash of waterborne paint
- Pre-wash with brush fed by pump with recirculating fluid
- Nebulizer for clean water final rinse
- Brush can be connected to water supply
- Air gun for final drying
- Water / paint separation kit included
- 100% stainless steel
- ATEX II 2G



Dimensions	Weight	Operation	Air Pressure
450 x 660 x 1335 mm	44 kg	pneumatic	Min 6 - max 10 bar

## 182CX Automatic with Water



- Manual and automatic wash of water-borne paint
- Vapour exhaust system
- Automatic wash with recirculating liquid fed by diaphragm pump
- Final rinse with clean water fed by venturi pump and nebulizer
- Brush can be connected to water supply
- Air gun for final drying
- Water / paint separation kit included
- Colour tests allowed
- 100% stainless steel
- ATEX II 2G



Dimensions	Weight	Operation	Air Pressure	Exhaust duct
450 x 685 x 1500 mm	49 kg	pneumatic	Min 6 - max 10 bar	120 mm



## 135 Speedy Clean combined. Manual with water and solvent



II 2G



- Very compact unit, simply hang on the wall.
- 4 tanks of 5 litres each
- One pump with dirty fluid for both zones (pre-wash)
- One nebulizer with clean fluid for both zones
- Brush for manual washing
- Works with water plus detergent and thinner
- Washes whole spray guns, nozzles, paint cup, stirrers, paint filters etc..
- Produces very low vapours
- Exhaust system built in
- Air gun for drying
- Can be used inside or outside spray booth
- 100% stainless steel
- ATEX II 2G



Dimensions	Weight	Operation	Air Pressure
450 x 310 x 830 mm	10 kg	Pneumatic	Min 6 - max 10 bar

## L10 Combined. Manual with water and solvent



II 2G



**OPTIONAL: KIT M**

- Combi unit for manual wash of waterborne and solvent based paint
- Automatic vapour exhaust from work area
  - **Water zone**
- Venturi pump for washing with recirculating liquid
- Nebulizer for clean water final rinse
- Air gun for final drying
- Water / paint separation kit **not included**
- **Solvent zone**
- Pre-wash with Venturi pump fed recirculating thinner
- Venturi pump feeding clean thinner
- Nebulizer for final rinse with clean thinner
- Colour tests allowed
- 100% Stainless steel
- ATEX II 2G

Dimensions	Weight	Operation	Air Pressure	Exhaust duct
990 x 690 x 1490 mm	72 kg	Pneumatic	Min 6 - max 10 bar	120 mm

## L20 M Combined. Manual with water and solvent



II 2G



- Combi unit for manual wash of waterborne and solvent based paint
- Automatic vapour exhaust from work area
  - **Water zone**
- Pre-wash with brush and pump fed with recirculating liquid
- Nebulizer for final rinse with clean water
- Air gun for final drying
- Water/paint separation kit included
- 
- **Solvent zone**
- Pre-wash with Venturi pump fed with recirculating thinner
- Venturi pump feeding clean thinner
- Nebulizer for final rinse with clean thinner
- Colour tests allowed
- 100% Stainless steel
- ATEX II 2G



**OPTIONAL: KIT M**

Dimensions	Weight	Operation	Air Pressure	Exhaust duct
990 x 690 x 1490 mm	85 kg	Pneumatic	Min 6 - max 10 bar	120 mm

## G40 M Combined. Manual with water and automatic with solvent



II 2G



- Combi unit, automatic and manual wash of waterborne and solvent based paint
- Automatic vapour exhaust from work area
  - **Water zone**
- Pre-wash with brush and pump fed recirculating liquid
- Nebulizer for final rinse with clean water
- Air gun for final drying
- Water/paint separation kit included
- 
- **Solvent zone**
- Automatic wash with diaphragm pump feeding recirculating thinner
- Mechanical block of the lid during automatic washing cycle
- Venturi pump feeding clean thinner
- Nebulizer for final rinse with clean thinner
- Air pressure regulator for colour testing
- Colour tests allowed
- 100% Stainless steel
- ATEX II 2G



Dimensions	Weight	Operation	No of spray guns	Air Pressure	Exhaust duct
1190 x 690 x 1490 mm	107 kg	Pneumatic	2	Min 6 - max 10 bar	150 mm

## G60 F Combined. Automatic with water and solvent



II 2G



- Combi unit, automatic and manual wash of waterborne and solvent based paint
- Automatic vapour exhaust from work area
  - **Water zone**
- Pre-wash with brush and pump fed recirculating liquid
- Nebulizer for final rinse with clean water
- Air gun for final drying
- Water/paint separation kit included
- 
- **Solvent zone**
- Automatic wash with diaphragm pump feeding recirculating thinner
- Mechanical block of the lid during automatic washing cycle
- Venturi pump feeding clean thinner
- Nebulizer for final rinse with clean thinner
- Air pressure regulator for colour testing
- Colour tests allowed
- 100% Stainless steel
- ATEX II 2G



**OPTIONAL: KIT M**



Dimensions	Weight	Operation	No of spray guns	Air Pressure	Exhaust duct
1190 x 690 x 1490 mm	107 kg	Pneumatic	2	Min 6 - max 10 bar	150 mm

## P10 Manual with solvent



II 2G



- All stainless steel
- Manual wash of solvent based paint
- Automatic vapour extraction
- Pre-wash with venturi pump feeding recirculating thinner
- Venturi pump feeding clean thinner
- Final rinse with nebulizer and clean thinner
- Colour tests allowed
- ATEX II 2G



**OPTIONAL: KIT M**

Dimensions	Weight	Operation	Air Pressure	Exhaust duct
490 x 690 x 1490 mm	42 kg	Pneumatic	Min 6 - max 10 bar	120 mm

## M10 Manual with solvent



II 2G



- Manual wash of solvent based paint
- Automatic vapour extraction
- Pre-wash with venturi pump feeding recirculating thinner
- Venturi pump feeding clean thinner
- Final rinse with nebulizer and clean thinner
- Colour tests allowed
- ATEX II 2G
- 100% stainless steel



**OPTIONAL: KIT M**

Dimensions	Weight	Operation	Air Pressure	Exhaust duct
690 x 690 x 14900 mm	54 kg	Pneumatic	Min 6 - max 10 bar	120 mm

## 173B—173C Automatic with solvent



II 2G



- Automatic and manual wash of solvent based paint
- Automatic vapour extraction
- Automatic wash with recirculating thinner fed by diaphragm pump
- **Model 173C only** final wash with clean thinner fed by extra diaphragm pump
- Final rinse with nebulizer and clean thinner
- ATEX II 2G



Dimensions	Weight	Operation	No of guns	Air Pres-	Exhaust duct
450 x 660 x 1100 mm	42 kg	Pneumatic	1	Min 6 - max 10 bar	120 mm



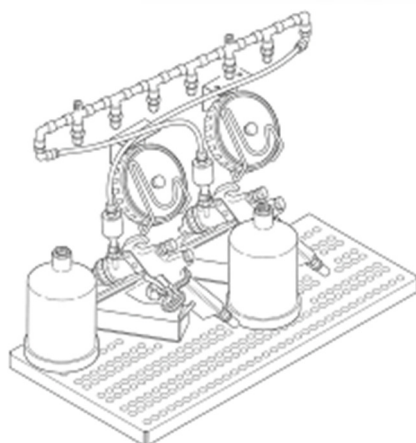
## 163AX Automatic with solvent



II 2G



- Automatic and manual wash with thinner or water
- Automatic vapour extraction
- Can wash up 2 spray guns per cycle
- Automatic wash with recirculating liquid fed by diaphragm pump
- For gravity feed guns only
- **Model 163DX only** manual wash with brush and recirculating liquid fed by pump (ideal for water)
- Venturi pump feeding clean liquid
- Final rinse with nebulizer and clean thinner
- Colour tests allowed
- Very compact unit
- 100% stainless steel
- ATEX II 2G



Dimensions	Weight	Operation	No of guns	Air Pres-	Exhaust duct
500 x 720 x 1480 mm	49 kg	Pneumatic	2	Min 6 - max 10 bar	120 mm

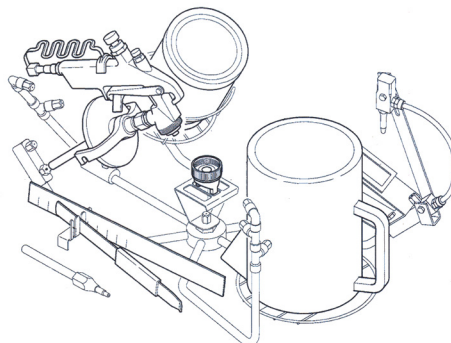
## M30 and M30F Automatic with solvent



II 2G



- Automatic and manual wash of solvent based paint
- Automatic vapour exhaust from work area
- Automatic wash with diaphragm pump feeding recirculating liquid
- Wash with Venturi pump feeding recirculating thinner
- Pump stopped if lid opened during automatic washing cycle
- Venturi pump feeding clean liquid
- Nebulizer for final rinse with clean thinner
- Air pressure regulator for colour testing
- 100% stainless steel
- ATEX II 2G
- Option KIT M



Model M30 F only

Dimensions	Weight	Operation	No of guns	Air Pressure	Exhaust duct
690 x 690 x 1490 mm	67 kg	Pneumatic	2	Min 6 - max 10 bar	120 mm

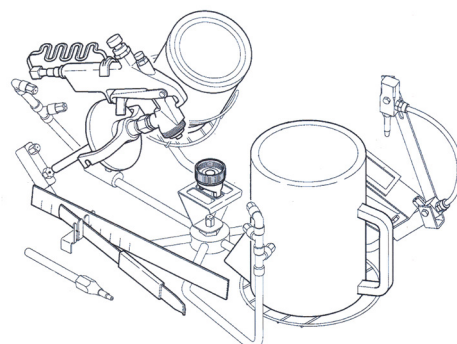
## 1801B Washer Distiller



II 2G

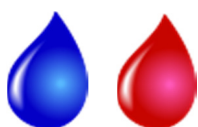


- Automatic and manual wash of solvent based Paint with solvent recycling
- Automatic vapour extraction
- Automatic wash with recirculating liquid fed by diaphragm pump
- **Model 180B / 180BX only** : Final wash with clean thinner fed by extra diaphragm pump operated by push-button
- **Model 180CX only**: Final wash with clean thinner fed by diaphragm pump operated by timer
- Wash with recirculating liquid fed by venturi pump (except 180A)
- Venturi pump feeding clean liquid
- Final rinse with nebulizer and clean thinner
- Air pressure regulator for colour tests
- Models 180BX / 180CX 100% stainless steel
- ATEX II 2G

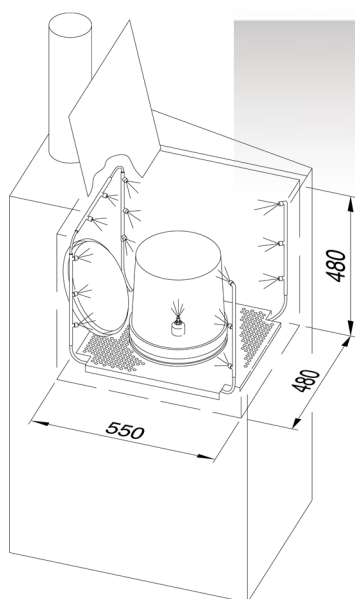


Dimensions	Weight	Operation	No of guns	Air Pressure	Exhaust duct
510 x 720 x 1380 mm	150 kg	Pneumatic	2	Min 6 - max 10 bar	150 mm

## 174 B Automatic Can Washer



- Automatic wash with solvent or water based detergents for cans up to 30 litres
- Automatic wash provided by fixed nozzles and cleaner fed by diaphragm pump
- Vapour extraction system
- ATEX II 2G



### Specific for solvent!

The Can washer has been designed for automatically washing cans up to 30 litre capacity. It consists of steel container housing fixed spray nozzles to effectively clean inside and outside cans. This pneumatically driven equipment is controlled by a timer and can be operated with solvents and water-based detergents.

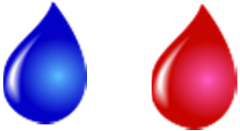
Vapour extractor guarantees safe working conditions.

Dimensions	Weight	Wash chamber dimensions	Operation	Air Pressure	Exhaust Duct
530 x 710 x 1320 mm	60 kg	480 x 550 x 480 H mm	pneumatic	Min 6 - max 10 bar	120 mm

## 250A—250B Paint Work Bench



II 2G



- Work bench
- 100% stainless steel
- Ideal for mixing, stirring and diluting waterborne and solvent based paint
- **Model 250B only:** Vapour extraction From work area and 2 venturi pumps for dosing the thinner or liquid to be diluted
- ATEX II 2G

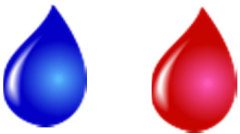


Dimensions	Weight	Operation	Air Pressure	Exhaust duct
1090 x 690 x 1465 mm	62 kg	Pneumatic	Min 6 - max 10 bar	150 mm

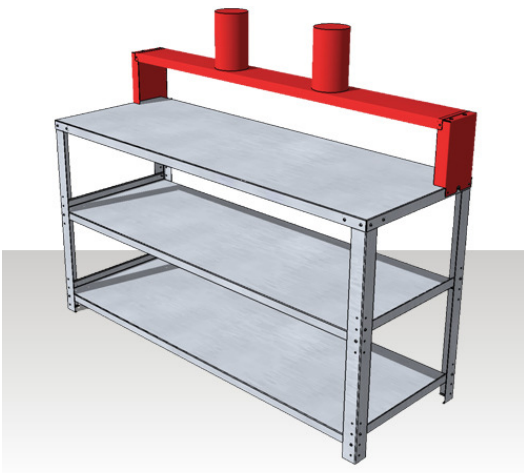
## 255 Paint Work Bench



II 2G



- Workbench
- 100% stainless steel
- Ideal for placing, mixing, stirring and diluting waterborne and solvent based paint
- Vapour exhaust from work area
- Two shelves adjustable in height
- Possibility to work in one or both sides of the table



Self assembly

Ducting not included

Dimensions	Weight	Operation	Air Pressure	Exhaust duct
1800 x 645 x 1210 mm	60 kg	Pneumatic	8 bar	2 x 150 mm

## 110 Water Paint Separation Kit



II 2G

- Ideal for paint / water separation
- Includes a plastic container and a perforated container to support filters
- Air mixer to stir water with coagulating powder



Dimensions	Weight	Tank capacity
600 x 400 x 500 mm	4.5 kg	50 litres

## 189 Active Carbon Filter

- Designed for the removal of exhausted vapours
- Can be adapted to all spray gun washers
- Active carbon can be replaced when exhausted
- Abatement percentage >50%



Dimensions	Weight	Carbon content
310 x 310 x 780 mm	28 kg	12 kg

## RE-5 RE-10 Remover Detergent

- Concentrated detergent for diluting with water
- New formulation with very low foam
- Used cold: it improves spray gun washing also with dry paint
- Used hot: it halves washing time and allows a thorough cleaning with dried paint too
- Keeps pump, hoses and washing nozzles clean
- Prevents dirt forming inside spray gun washer body
- Product is re usable after coagulation
- 5-15% dilution with water



5 and 10 litre packs

---

## Flock Coagulating Powder

- Coagulating powder for water / paint separation
- 2 kg or 25 kg packs







Solutex Ltd

Unit 1, Ellesmere Business Park

Ellesmere, SY12 0EW United Kingdom

Tel: +44 (0) 1691 622225 Fax: +44 (0) 1691 622277

[www.solutex.co.uk](http://www.solutex.co.uk) [info@solutex.co.uk](mailto:info@solutex.co.uk)

