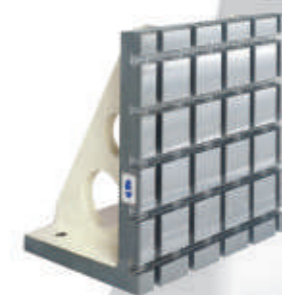


BASE SERIES

BP01~BP37, BP-SPECIAL



M/C BASE PLATE M/C CLAMPING CUBE M/C DOUBLE-SIDED ANGLE PLATE

BP01

M/C BASE PLATE



- Material / Finish:
Material: Cast Iron FC300(JIS) / GG30(DIN)
Heat treated (Normalized)
- Application: Vertical Machining Center.
- Features: Ready to accept a hole pattern for your special jig.

BP02

M/C BASE PLATE



- Material / Finish:
Material: Cast Iron FC300(JIS) / GG30(DIN)
Heat treated (Normalized)
Alignment Bushing: SUJ2(JIS) / 100Cr6(DIN) heat treated.
Threaded Insert: S45C (JIS)/ CK45 (DIN), heat treated.
MTP hole spacing: 50 ± 0.02
- Application: Vertical Machining Center.
- Features: Alignment bushing & thread insert at every hole location, easily adapts to standardized jig components.

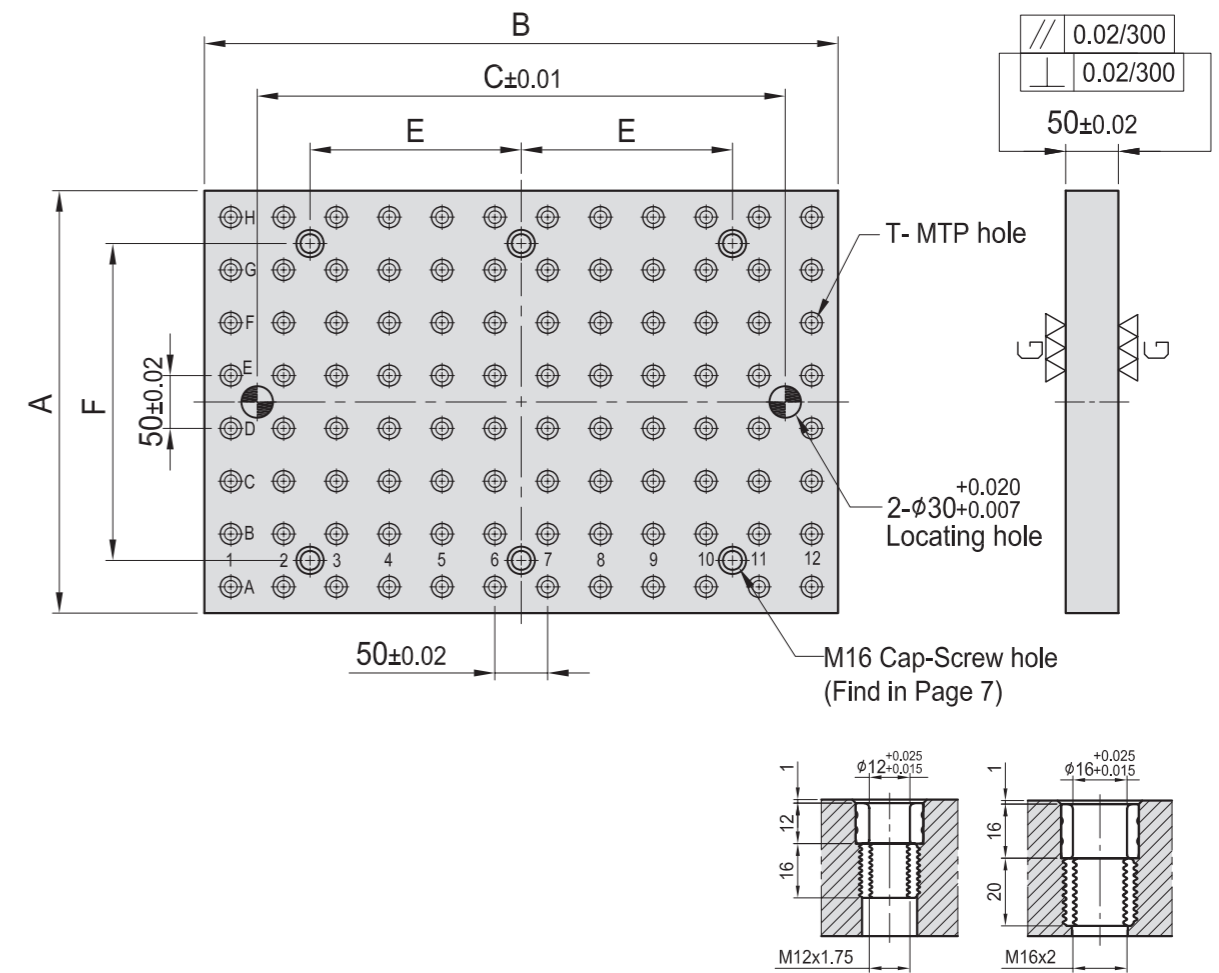
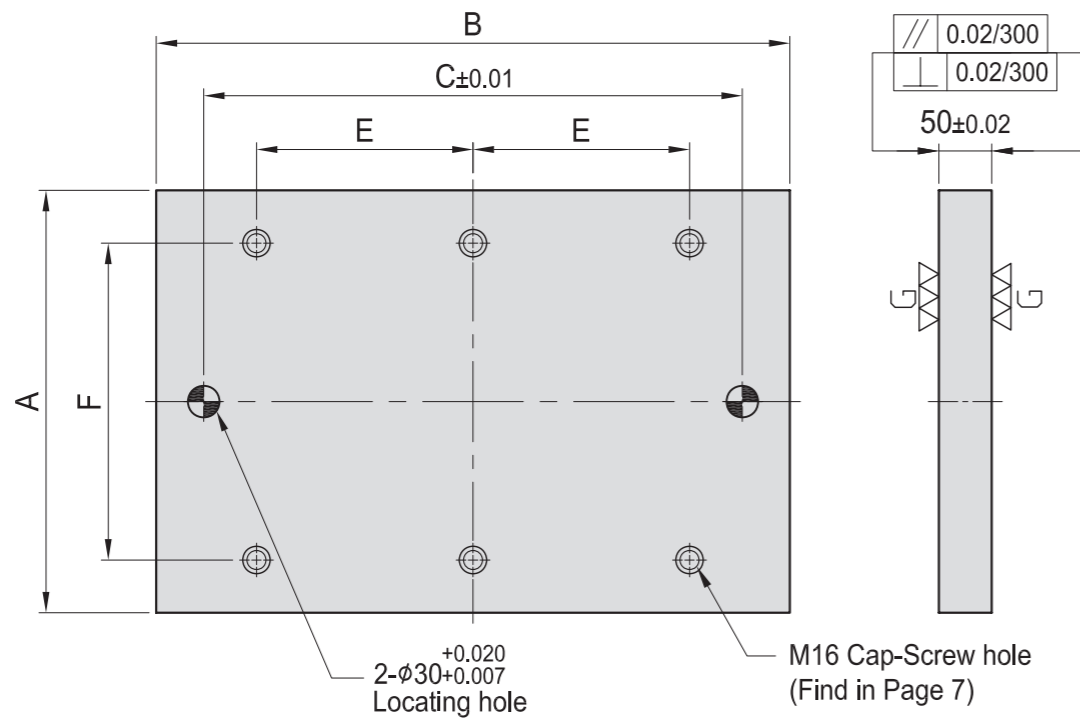


Figure T

MODEL NO.	A	B	C	E	F	kg
BP01-50400-0600	400	600	-	-	-	88
BP01-50500-0600	500					106
BP01-50600-0600	600					127
BP01-50400-0800	400	800	-	-	-	113
BP01-50450-0900	450	900				142
BP01-50500-1000	500	1000	-	-	-	176
BP01-50600-1200	600	1200				256

*Special Design Welcome !

MODEL NO.	A	B	C	E	F	T	MTP	kg
BP02-50400-0600-12	400	600	-	-	-	φ 12	M12	96 90
BP02-50500-0600-12	500							120 112
BP02-50600-0600-12	600							144 134
BP02-50400-0800-12	400	800	-	-	-	φ 12	M12	128 109
BP02-50450-0900-12	450	900						158 138
BP02-50500-1000-12	500	1000	-	-	-	φ 12	M12	200 165
BP02-50600-1200-12	600	1200						288 244

*Special Design Welcome !

MODEL NO.	A	B	C	E	F	T	MTP	kg
BP02-50400-0600-16	400	600	-	-	-	φ 16	M16	96 89
BP02-50500-0600-16	500							120 108
BP02-50600-0600-16	600							144 120
BP02-50400-0800-16	400	800	-	-	-	φ 16	M16	128 108
BP02-50450-0900-16	450	900						158 134
BP02-50500-1000-16	500	1000	-	-	-	φ 16	M16	200 164
BP02-50600-1200-16	600	1200						288 240

BP

BPA

BC

CP

SU

PT

SVF

ALV

OK-
VISE

JER-
GENS

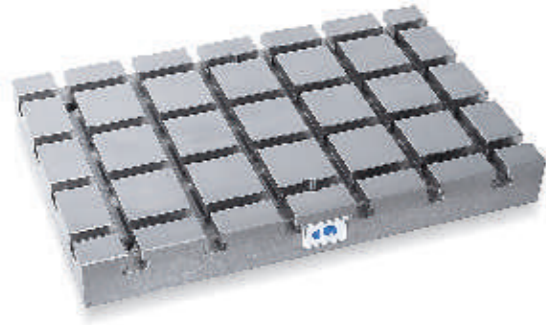
OTHER

Column
for
Technical
Data

BP03

M/C BASE PLATE

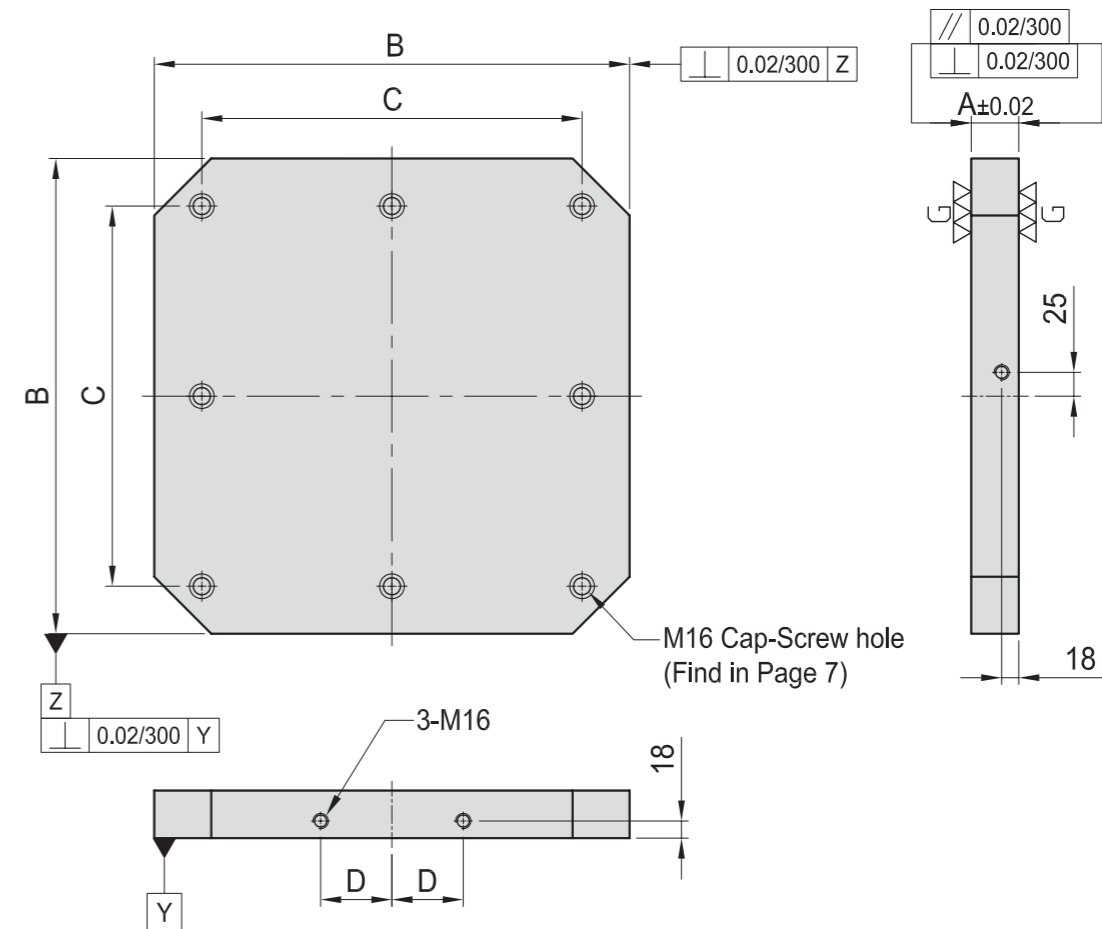
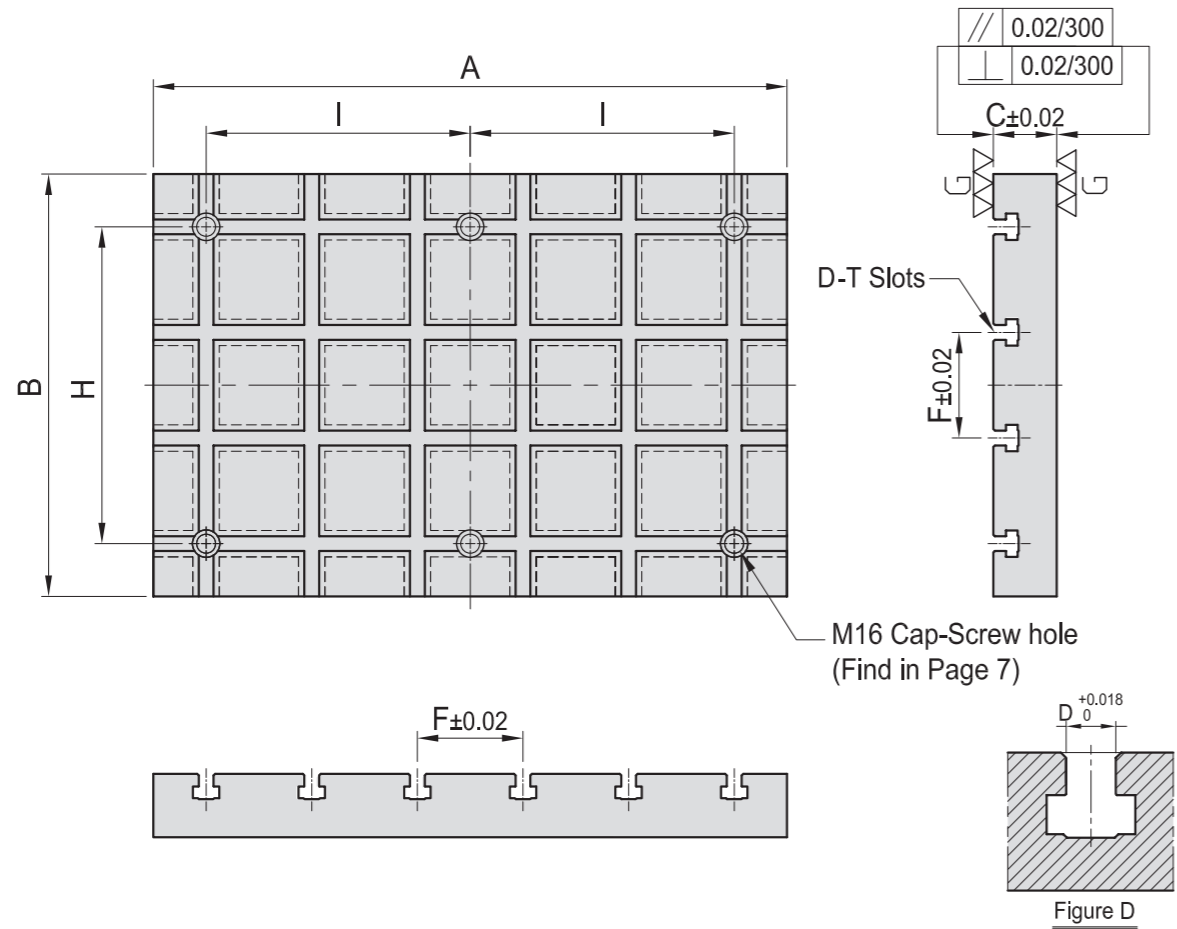
- Material / Cast Iron FC300(JIS) / GG30(DIN)
- Heat treated: Normalized
- Application: Vertical Machining Center.
- Features: T-Slots running in 2 directions, easily adapts to standardized jig components.



BP04

M/C BASE PLATE

- Material / Finish: Cast Iron FC300(JIS) / GG30(DIN)
Heat treated (Normalized)
- Application: Horizontal Machining Center.
- Features: Ready to accept a hole pattern for your special jig.



MODEL NO.	A	B	C	D	F	H	I	kg
BP03-60400-0600-14		400						92
BP03-60500-0600-14	600	500	60	14	100	-	-	115
BP03-60600-0600-14		600						130
BP03-60400-0800-14	800	400	60	14	100	-	-	117
BP03-60450-0900-14	900	450	60	14	100	-	-	168
BP03-60500-1000-14	1000	500	60	14	100	-	-	198
BP03-60600-1200-14	1200	600	60	14	100	-	-	264

MODEL NO.	A	B	C	D	F	H	I	kg
BP03-75400-0600-18		400						118
BP03-75500-0600-18	600	500	75	18	100	-	-	147
BP03-75600-0600-18		600						173
BP03-75400-0800-18	800	400	75	18	100	-	-	151
BP03-75450-0900-18	900	450	75	18	100	-	-	182
BP03-75500-1000-18	1000	500	75	18	100	-	-	228
BP03-75600-1200-18	1200	600	75	18	100	-	-	329

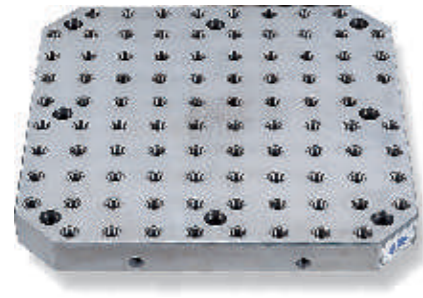
MODEL NO.	A	B	C	D	Mounting holes	kg
BP04-50400-0400	50	400	320	55	4	57
BP04-50500-0500	50	500	400	75	8	88
BP04-50630-0630	50	630	500	100	8	140
BP04-50800-0800	50	800	640	135	8	225

*Special Design Welcome !

*Special Design Welcome !

BP05

M/C BASE PLATE



- Material / Finish:
Material: Cast Iron FC300(JIS) / GG30(DIN)
Heat treated(Normalized)
Alignment Bushing: SUJ2(JIS) / 100Cr6(DIN), heat treated.
Threaded Insert: S45C(JIS) / CK45(DIN), heat treated.
MTP hole spacing: 50 ± 0.02
- Application: Horizontal Machining Center.
- Features: Alignment bushing & thread insert at every hole location, easily adapts to standardized jig components.

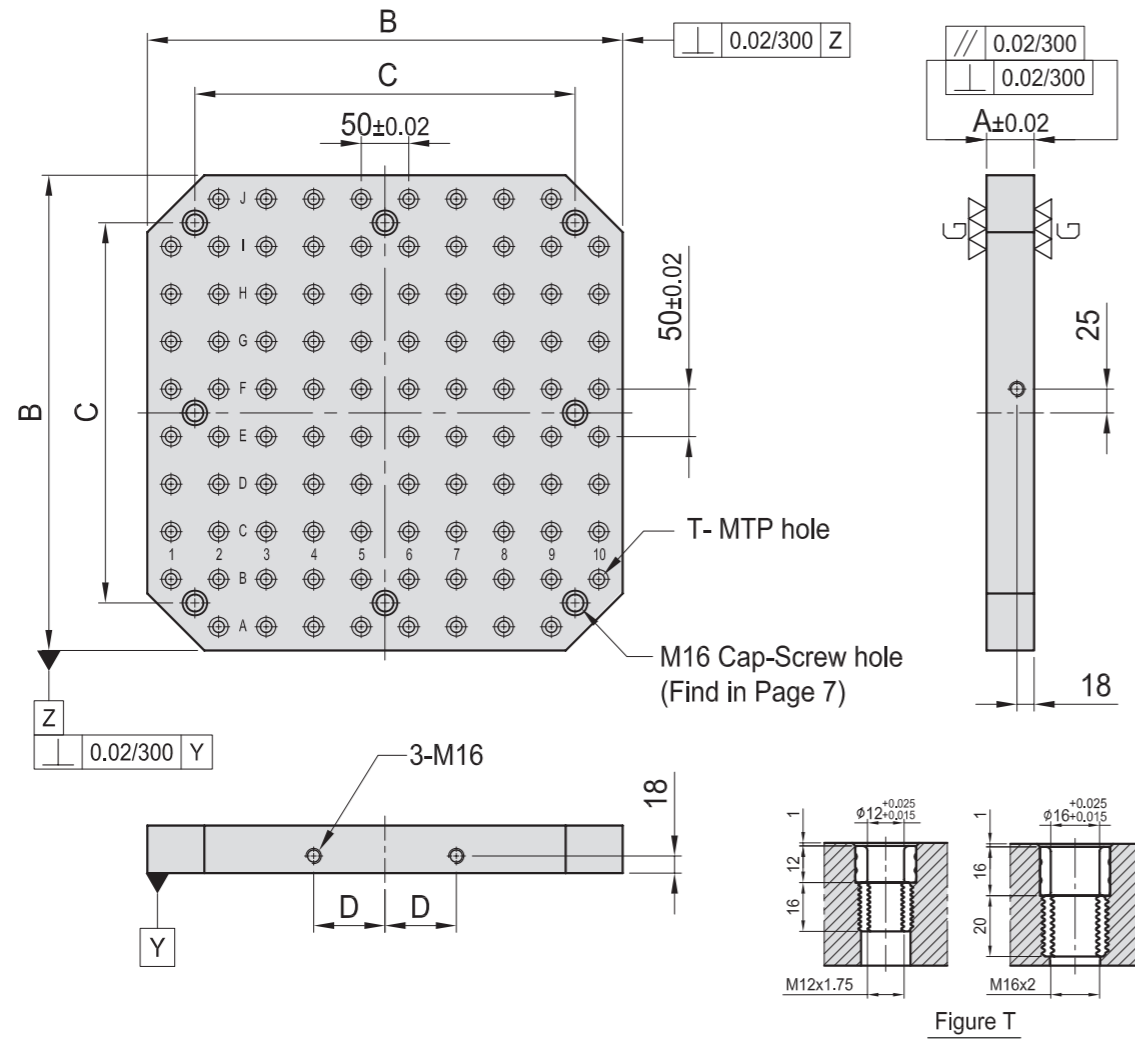


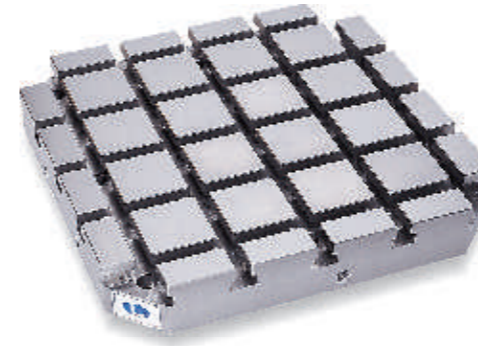
Figure T

MODEL NO.	A	B	C	D	T	MTP	Mounting holes	kg	
BP05-50400-0400-12	50	400	320	55	$\phi 12$	M12	59	4	54
BP05-50500-0500-12		500	400	75			93	8	83
BP05-50630-0630-12	50	630	500	100	$\phi 12$	M12	139	8	135
BP05-50800-0800-12		800	640	135			237		206
BP05-50400-0400-16	50	400	320	55	$\phi 16$	M16	59	4	52
BP05-50500-0500-16		500	400	75			93	8	80
BP05-50630-0630-16	50	630	500	100	$\phi 16$	M16	139	8	130
BP05-50800-0800-16		800	640	135			237		247

*Special Design Welcome !

BP06

M/C BASE PLATE



- Material: Cast Iron FC300(JIS) / GG30(DIN)
- Heat treated: Normalized
- Application: Horizontal Machining Center.
- Features: T-Slots running in 2 directions, easily adapts to standardized jig components.

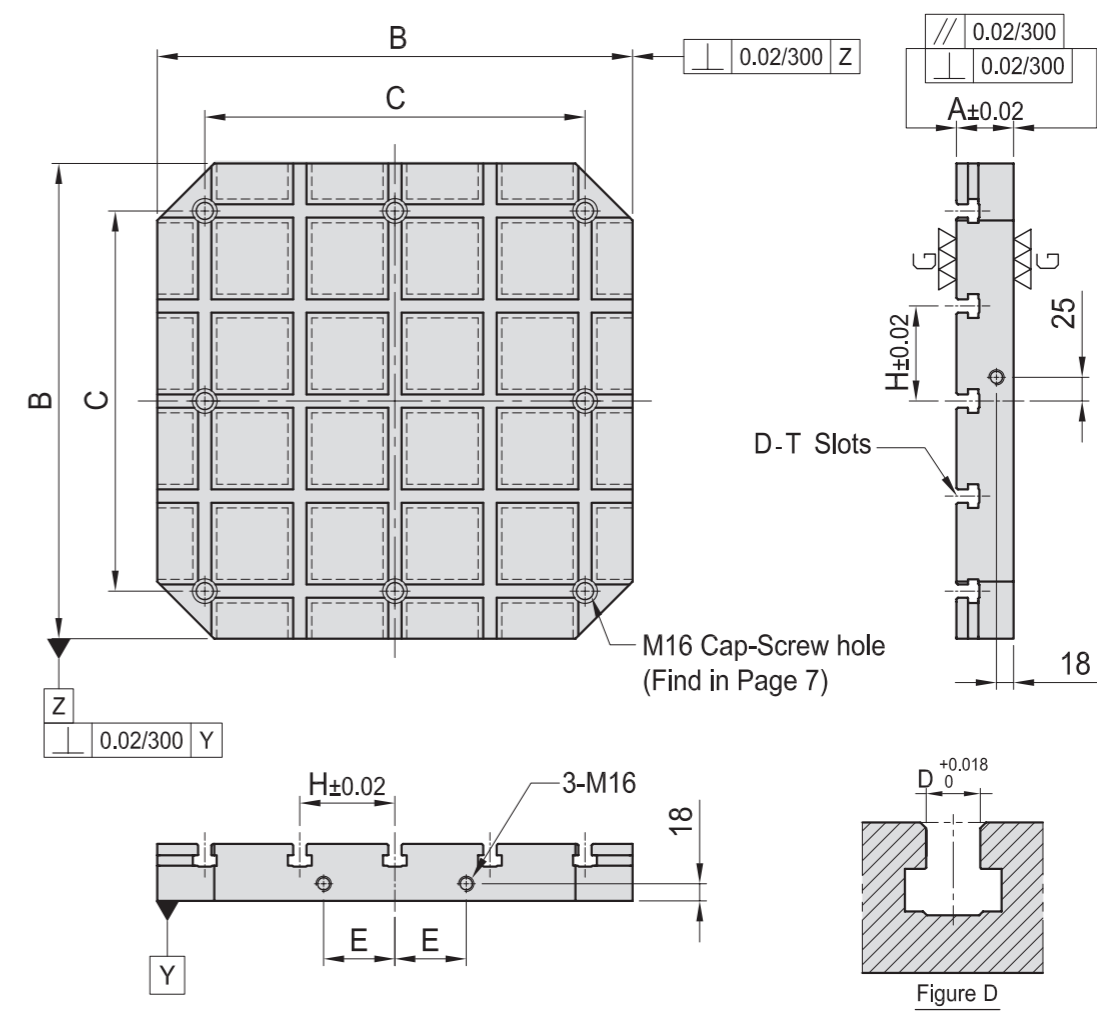


Figure D

MODEL NO.	A	B	C	D	E	H	Mounting holes	kg
BP06-60400-0400-14	60	400	320	14	55	80	4	56
BP06-60500-0500-14		500	400		75	100	8	90
BP06-60630-0630-14	60	630	500	14	100	125	8	150
BP06-60800-0800-14		800	640		135	160		230
BP06-75400-0400-18	75	400	320	18	55	80	4	68
BP06-75500-0500-18		500	400		75	100	8	108
BP06-75630-0630-18	75	630	500	18	100	125	8	180
BP06-75800-0800-18		800	640		135	160		295

*Special Design Welcome !

BP

BPA

BC

CP

SU

PT

SVF

ALV

OK-
VISE

JER-
GENS

OTHER

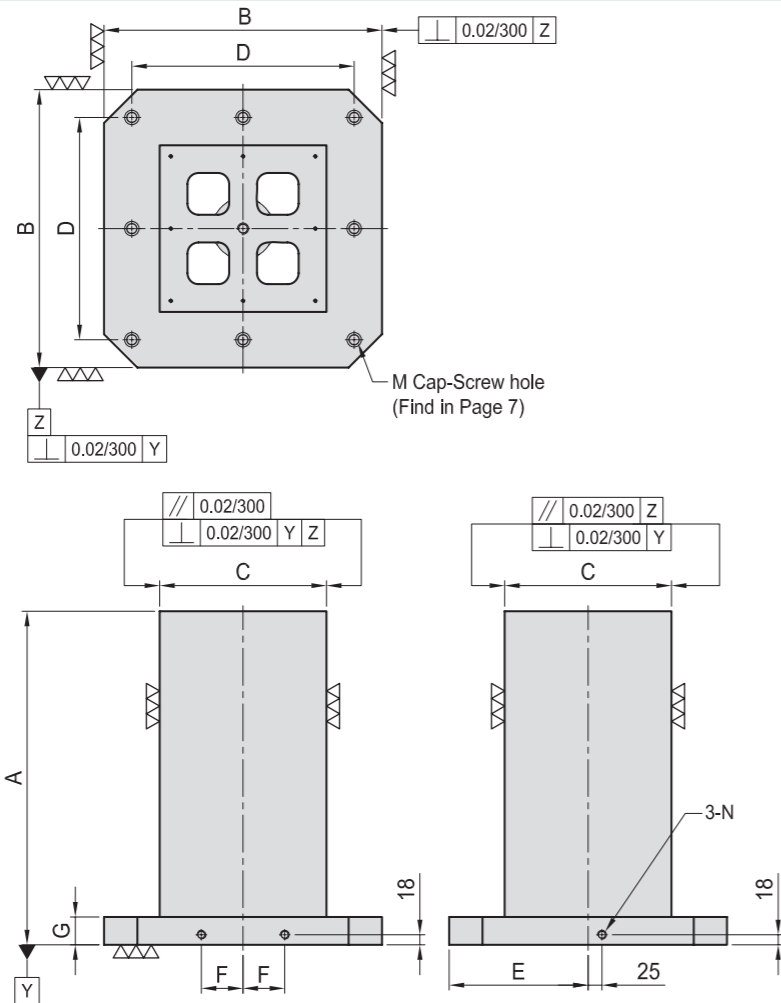
Column
for
Technical
Data



BP07

SQUARE TOOLING COLUMN

- Material / Finish: Cast Iron FC300(JIS) / GG30(DIN) Heat treated (Normalized)
- Application: Horizontal Machining Center.
- Features: Ready to accept a hole pattern for your special jig.
- Eye bolt & top cover included.



MODEL NO.	A	B	C	D	E	F	G	M	N	Mounting holes	kg
BP07-300300-0500	500	300	150	250	150	40	50	M12	M12	4	90
BP07-400400-0500	500	400	250	320	200	55	50	M16	M16	4	160
BP07-400400-0650	650										210
BP07-500500-0600	600	500	300	400	250	75	50	M16	M16	8	250
BP07-500500-0750	750										310
BP07-630630-0700	700	630	350	500	315	100	50	M16	M16	8	400
BP07-630630-0850	850										460
BP07-800800-0800	800	800	500	640	400	135	50	M16	M16	8	680
BP07-800800-1000	1000										800
BP07-10001000-1000	1000	1000	600	800	500	165	55	M20	M16	8	1164
BP07-10001000-1250	1250										1391

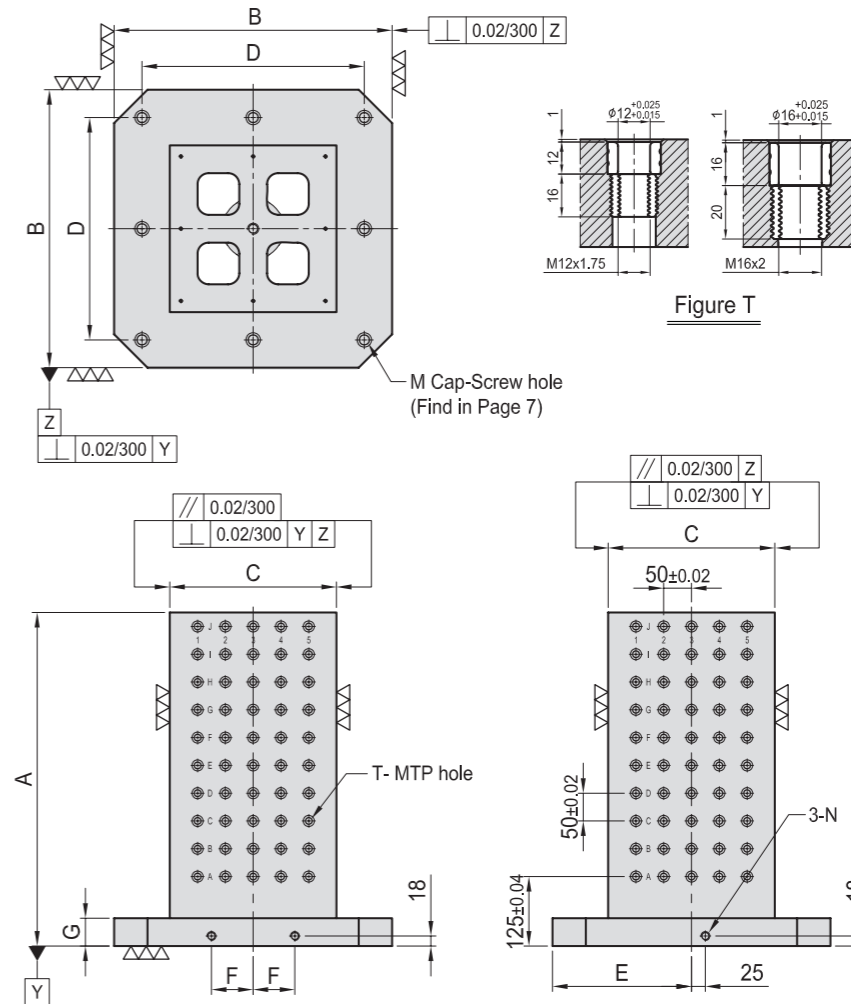
*Special Design Welcome !



BP08

SQUARE TOOLING COLUMN

- Material / Finish: Cast Iron FC300 (JIS) / GG30 (DIN) Heat treated (Normalized)
- Alignment bushing: SUJ2(JIS) / 100Cr6(DIN), heat treated
- Threaded Insert: S45C(JIS) / CK45(DIN), heat treated
- MTP hole spacing: 50±0.02
- Application: Horizontal Machining Center.
- Features: Alignment bushing & thread insert at every hole location, easily adapts to standardized jig components.
- Eye bolt & top cover included.



MODEL NO.	A	B	C	D	E	F	G	T	M	N	MTP	Mounting holes	kg	MODEL NO.	A	B	C	D	E	F	G	T	M	N	MTP	Mounting holes	kg			
BP08-300300-0500-12	500	300	150	250	150	40	50	φ12	M12	M12	M12	64	4	90	BP08-300300-0500-16	500	300	150	250	150	40	50	φ16	M16	M12	M12	M12	64	4	90
BP08-400400-0500-12	500	400	250	320	200	55	50	φ12	M12	M16	M16	128	4	155	BP08-400400-0500-16	500	400	250	320	200	55	50	φ16	M16	M16	M16	128	4	152	
BP08-400400-0650-12	650											176	200	BP08-400400-0650-16	650	176											200			
BP08-500500-0600-12	600	500	300	400	250	75	50	φ12	M12	M16	M16	200	8	240	BP08-500500-0600-16	600	500	300	400	250	75	50	φ16	M16	M16	M16	200	8	235	
BP08-500500-0750-12	750											260	300	BP08-500500-0750-16	750	260											300			
BP08-630630-0700-12	700	630	350	500	315	100	50	φ12	M12	M16	M16	288	8	360	BP08-630630-0700-16	700	630	350	500	315	100	50	φ16	M16	M16	M16	288	8	365	
BP08-630630-0850-12	850											360	445	BP08-630630-0850-16	850	360											445			
BP08-800800-0800-12	800	800	500	640	400	135	50	φ12	M12	M16	M16	504	8	635	BP08-800800-0800-16	800	800	500	640	400	135	50	φ16	M16	M16	M16	504	8	630	
BP08-800800-1000-12	1000											648	780	BP08-800800-1000-16	1000	648											780			
BP08-10001000-1000-12	1000	1000	600	800	500	165	55	φ12	M12	M20	M16	792	8	1164	BP08-10001000-1000-16	1000	1000	600	800	500	165	55	φ16	M16	M20	M16	792	8	1164	
BP08-10001000-1250-12	1250											1012	1391	BP08-10001000-1250-16	1250	1012											1391			

*Special Design Welcome !

- BP
- BPA
- BC
- CP
- SU
- PT
- SVF
- ALV
- OK- VISE
- JER-GENS
- OTHER

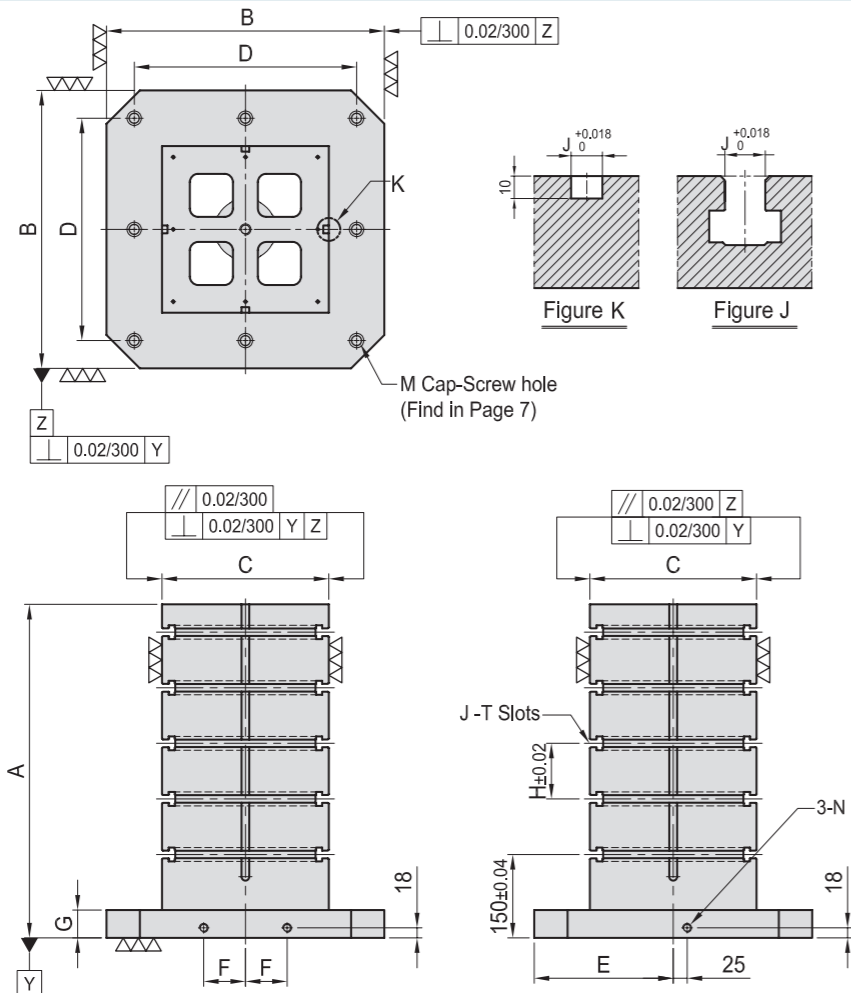
Column for Technical Data



BP09

SQUARE TOOLING COLUMN

- Material / Finish:
Material: Cast Iron FC300(JIS) / GG30(DIN)
Heat treated (Normalized)
- Application: Horizontal Machining Center.
- Features: T-Slots running horizontally, key-way running vertically, easily adapts to standardized jig components.
- Eye bolt & top cover included.



MODEL NO.	A	B	C	D	E	F	G	M	N	H	J	Mounting holes	kg
BP09-400400-0500-14	500	400	250	320	200	55	50	M16	M16	100	14	4	160
BP09-400400-0650-14	650												200
BP09-500500-0600-14	600	500	300	400	250	75	50	M16	M16	100	14	8	270
BP09-500500-0750-14	750												300
BP09-630630-0700-14	700	630	350	500	315	100	50	M16	M16	125	14	8	375
BP09-630630-0850-14	850												460
BP09-800800-0800-14	800	800	500	640	400	135	50	M16	M16	150	14	8	655
BP09-800800-1000-14	1000												800
BP09-10001000-1000-14	1000	1000	600	800	500	165	55	M20	M16	160	14	8	1146
BP09-10001000-1250-14	1250												1358
BP09-400400-0500-18	500	400	250	320	200	55	50	M16	M16	100	18	4	155
BP09-400400-0650-18	650												190
BP09-500500-0600-18	600	500	300	400	250	75	50	M16	M16	100	18	8	265
BP09-500500-0750-18	750												290
BP09-630630-0700-18	700	630	350	500	315	100	50	M16	M16	125	18	8	365
BP09-630630-0850-18	850												450
BP09-800800-0800-18	800	800	500	640	400	135	50	M16	M16	150	18	8	638
BP09-800800-1000-18	1000												790
BP09-10001000-1000-18	1000	1000	600	800	500	165	55	M20	M16	160	18	8	1146
BP09-10001000-1250-18	1250												1358

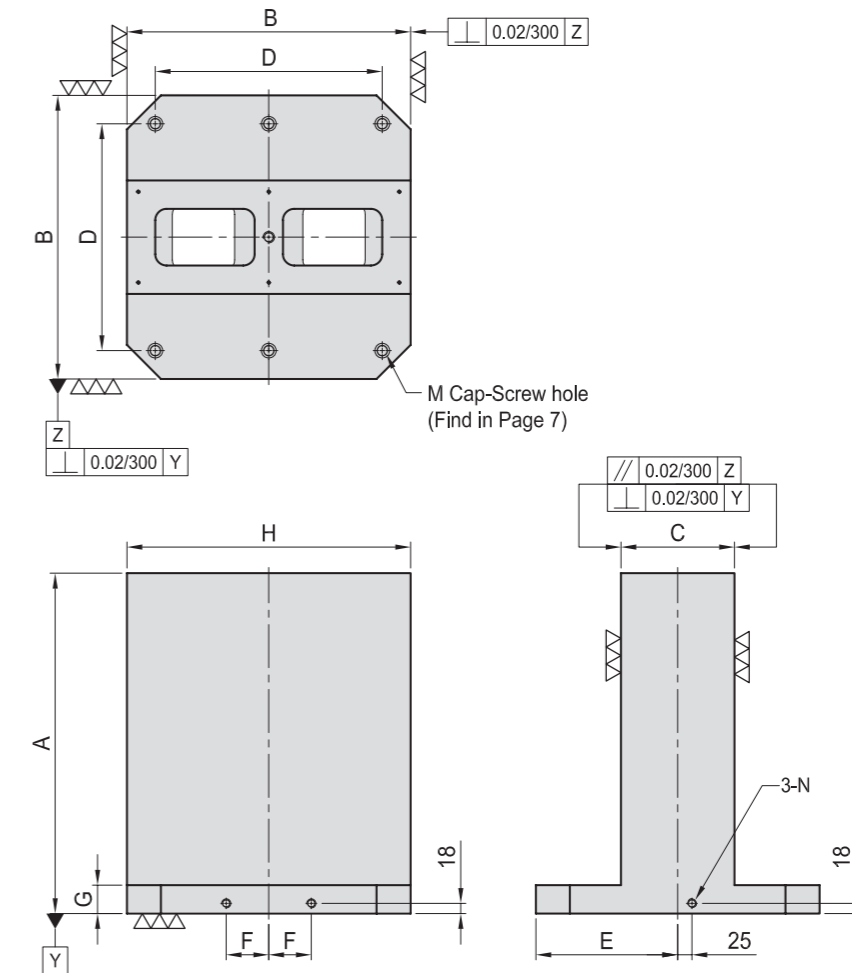
*Special Design Welcome !



BP10

DOUBLE SIDED TOOLING COLUMN

- Material / Finish:
Material: Cast Iron FC300(JIS) / GG30(DIN)
Heat treated (Normalized)
- Application: Horizontal Machining Center.
- Features: Ready to accept a hole pattern for your special jig.
- Eye bolt & top cover included.



MODEL NO.	A	B	C	D	E	F	G	H	M	N	Mounting holes	kg
BP10-300300-0500	500	300	80	250	150	40	50	300	M12	M12	4	115
BP10-400400-0500	500	400	150	320	200	55	50	400	M16	M16	4	170
BP10-400400-0650	650											215
BP10-500500-0600	600	500	200	400	250	75	50	500	M16	M16	6	270
BP10-500500-0750	750											350
BP10-630630-0700	700	630	250	500	315	100	50	630	M16	M16	6	445
BP10-630630-0850	850											520
BP10-800800-0800	800	800	300	640	400	135	50	800	M16	M16	6	675
BP10-800800-1000	1000											815
BP10-10001000-1000	1000	1000	350	800	500	165	55	1000	M20	M16	6	1162
BP10-10001000-1250	1250											1377

*Special Design Welcome !

BP

BPA

BC

CP

SU

PT

SVF

ALV

OK-VISE

JER-GENS

OTHER

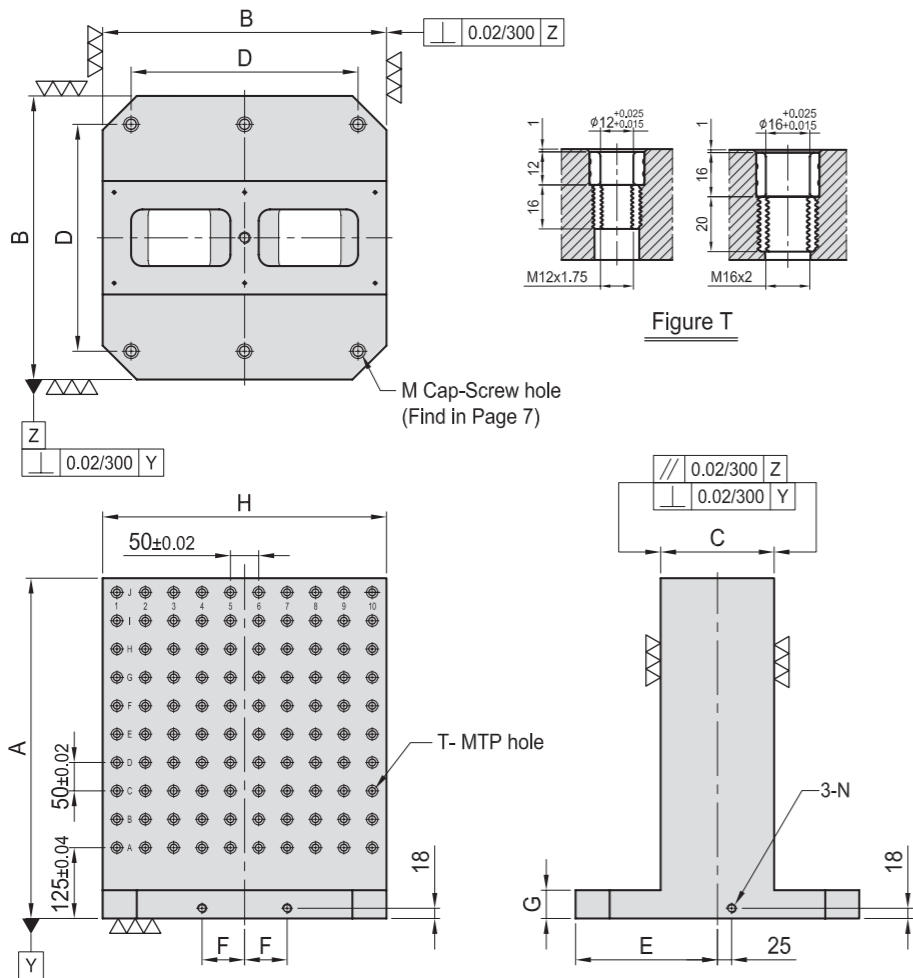
Column for Technical Data



BP11

DOUBLE SIDED TOOLING COLUMN

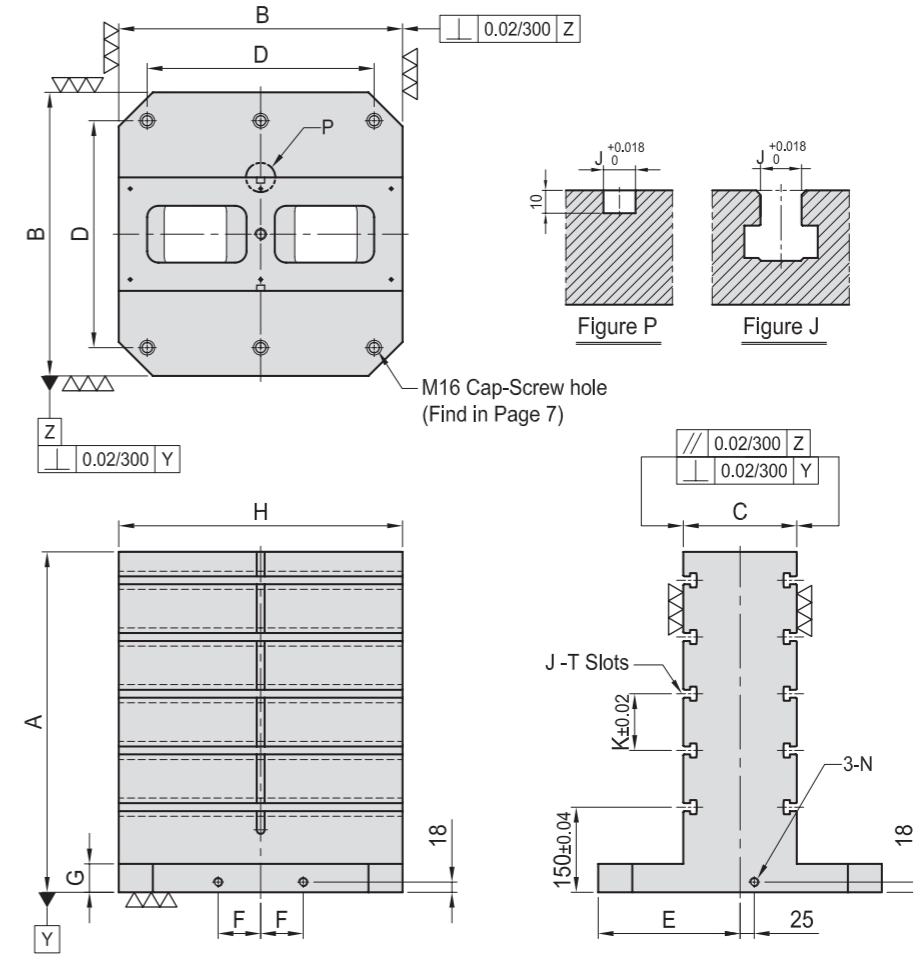
- Material / Finish:
Material: Cast Iron FC300(JIS) / GG30(DIN)
Heat treated (Normalized)
Alignment Bushing: SUJ2(JIS) / 100Cr6 (DIN), heat treated
Threaded Insert: S45C(JIS) / CK45(DIN), heat treated
MTP hole spacing: 50±0.02
- Application: Horizontal Machining Center.
- Features: Alignment bushing & thread insert at every hole location, easily adapts to standardized jig components.
- Eye bolt & top cover included.



BP12

DOUBLE SIDED TOOLING COLUMN

- Material / Finish:
Material: Cast Iron FC300(JIS) / GG30(DIN)
Heat treated (Normalized)
- Application: Horizontal Machining Center.
- Features: T-Slots running horizontally, key-way running vertically, easily adapts to standardized jig components.
- Eye bolt & top cover included.



MODEL NO.	A	B	C	D	E	F	G	H	T	M	N	MTP	Mount-ing holes	kg	
BP11-300300-0500-12	500	300	80	250	150	40	50	300	φ12	M12	M12	M12	96	4	110
BP11-400400-0500-12	500	400	150	320	200	55	50	400	φ12	M12	M16	M16	128	4	165
BP11-400400-0650-12	650	400	150	320	200	55	50	400	φ12	M12	M16	M16	176	4	210
BP11-500500-0600-12	600	500	200	400	250	75	50	500	φ12	M12	M16	M16	200	6	265
BP11-500500-0750-12	750	500	200	400	250	75	50	500	φ12	M12	M16	M16	260	6	335
BP11-630630-0700-12	700	630	250	500	315	100	50	630	φ12	M12	M16	M16	288	6	435
BP11-630630-0850-12	850	630	250	500	315	100	50	630	φ12	M12	M16	M16	360	6	515
BP11-800800-0800-12	800	800	300	640	400	135	50	800	φ12	M12	M16	M16	420	6	660
BP11-800800-1000-12	1000	800	300	640	400	135	50	800	φ12	M12	M16	M16	540	6	800
BP11-10001000-1000-12	1000	1000	350	800	500	165	55	1000	φ12	M12	M20	M16	684	6	1158
BP11-10001000-1250-12	1250	1000	350	800	500	165	55	1000	φ12	M12	M20	M16	874	6	1375

*Special Design Welcome !

MODEL NO.	A	B	C	D	E	F	G	M	N	H	J	K	Mount-ing holes	kg
BP12-400400-0500-14	500	400	150	320	200	55	50	M16	M16	400	14	100	4	170
BP12-400400-0650-14	650	400	150	320	200	55	50	M16	M16	400	14	100	4	220
BP12-500500-0600-14	600	500	200	400	250	75	50	M16	M16	500	14	100	6	290
BP12-500500-0750-14	750	500	200	400	250	75	50	M16	M16	500	14	100	6	335
BP12-630630-0700-14	700	630	250	500	315	100	50	M16	M16	630	14	125	6	440
BP12-630630-0850-14	850	630	250	500	315	100	50	M16	M16	630	14	125	6	515
BP12-800800-0800-14	800	800	300	640	400	135	50	M16	M16	800	14	150	6	670
BP12-800800-1000-14	1000	800	300	640	400	135	50	M16	M16	800	14	150	6	790
BP12-10001000-1000-14	1000	1000	350	800	500	165	55	M20	M16	1000	14	150	6	1158
BP12-10001000-1250-14	1250	1000	350	800	500	165	55	M20	M16	1000	14	150	6	1375

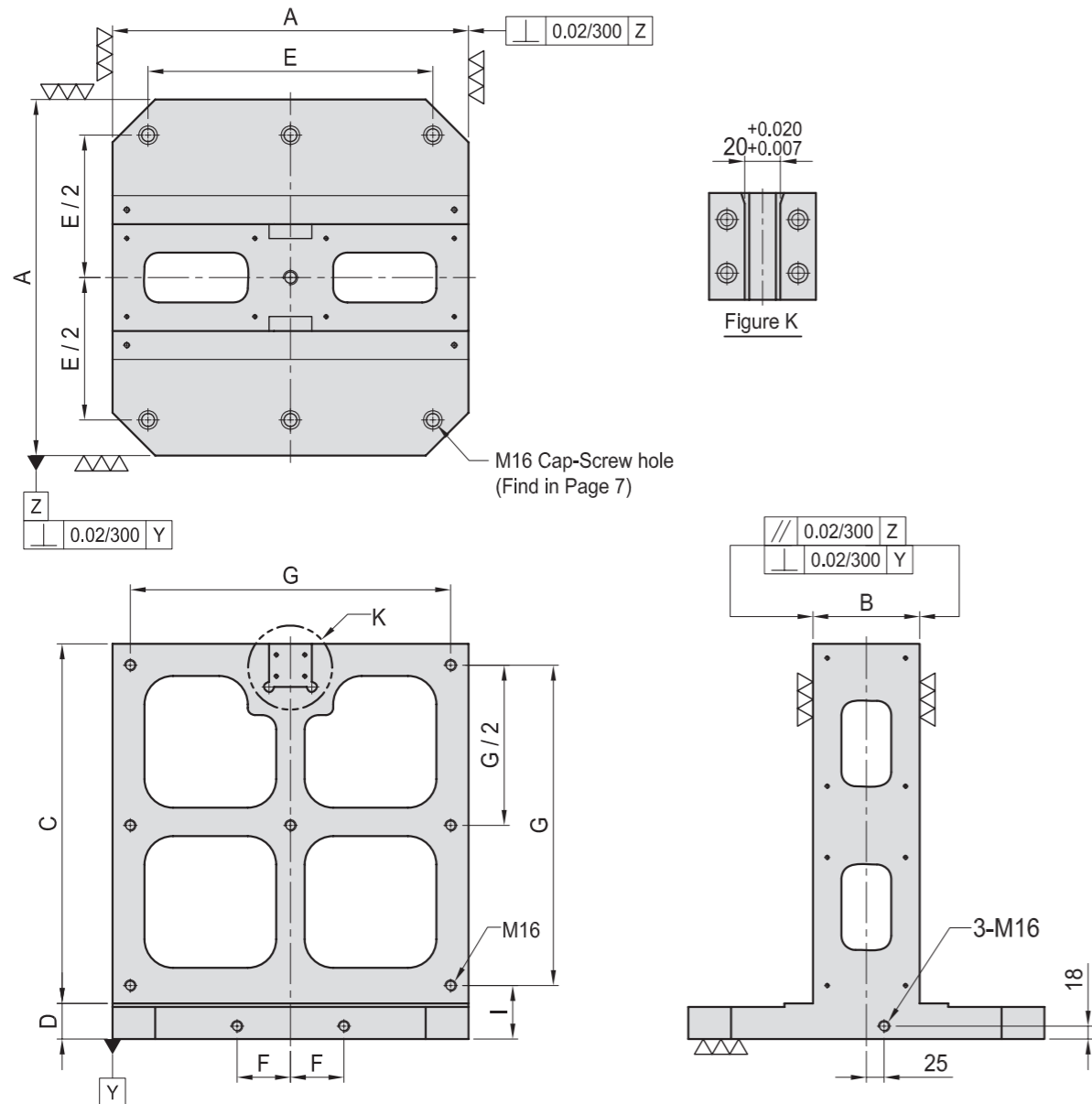
*Special Design Welcome !



BP13

MODULAR TOOLING COLUMN

- Material / Finish: Cast Iron FC300(JIS) / GG30(DIN)
Heat treated (Normalized)
- Application: Horizontal Machining Center.
- Features: Modular quick-change system, simple 3 point mounting, use with BP14 & BP15 subplates.
- Eye bolt, top cover & side covers included.



MODEL NO.	A	B	C	D	E	F	G	I	Mounting holes	kg
BP13-400400-0450	400	130	400	50	320	55	350	70	4	125
BP13-500500-0555	500	150	500	55	400	75	450	75	6	178
BP13-630630-0690	630	220	630	60	500	100	580	80	6	350
BP13-800800-0860	800	250	800	60	640	135	750	80	6	515

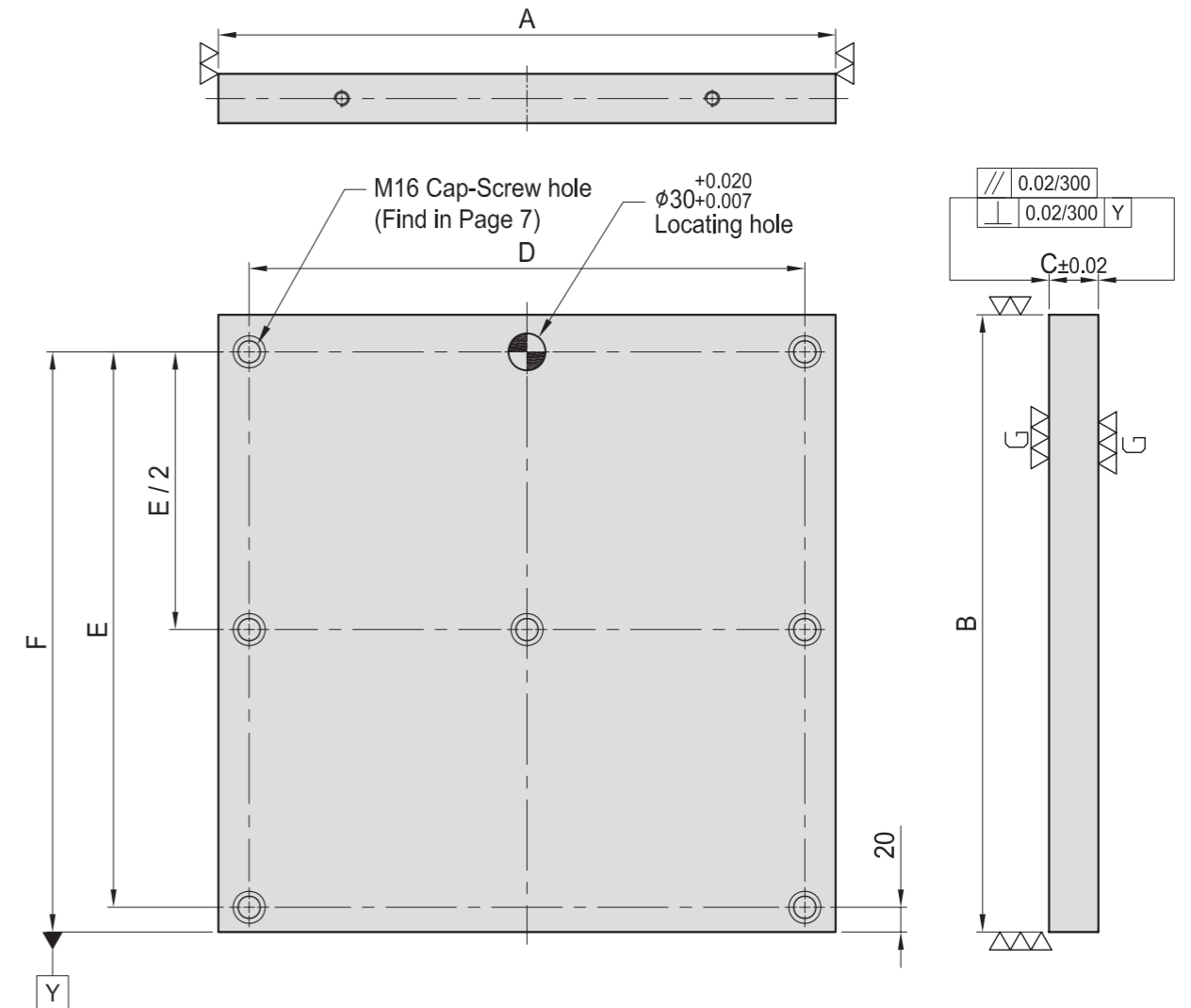
*Special Design Welcome !



BP14

SUB-PLATE

- Material / Finish: Cast Iron FC300(JIS) / GG30(DIN)
Heat treated (Normalized)
- Application: Modular quick change subplate, use with BP13.
- Features: Ready to accept a hole pattern for your special jig.



MODEL NO.	A	B	C	D	E	F	Mounting holes	kg
BP14-40400-0400	400	400	40	350	350	370	5	46
BP14-40500-0500	500	500	40	450	450	470	7	72
BP14-40630-0630	630	630	40	580	580	600	7	114
BP14-50800-0800	800	800	50	750	750	770	7	232

*Special Design Welcome !

BP

BPA

BC

CP

SU

PT

SVF

ALV

OK-VISE

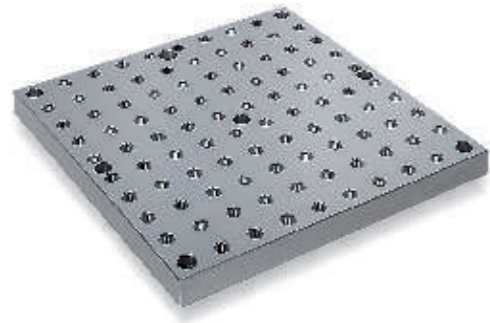
JER-GENS

OTHER

Column for Technical Data

BP15

SUB-PLATE



- Material / Finish:
Material: Cast Iron FC300(JIS) / GG30(DIN)
Heat treated (Normalized)
Alignment Bushing: SUJ2(JIS) / 100Cr6 (DIN), heat treated
Threaded Insert: S45C(JIS) / CK45(DIN), heat treated
MTP hole spacing: 50±0.02
- Application: Modular quick change subplate, use with BP13.
- Features: Alignment bushing & thread insert at every hole location, easily adapts to standardized jig components.

BP16

ROUND BASE PLATE



- Material / Finish:
Material: Cast Iron FC300(JIS) / GG30(DIN)
Heat treated (Normalized)
- Application: NC Rotary Table or Indexer.
- Features: Ready to accept a hole pattern for your special jig.

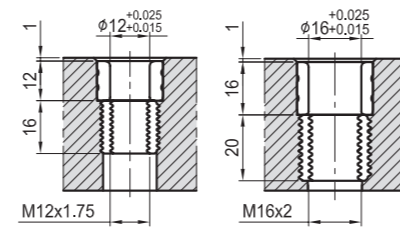
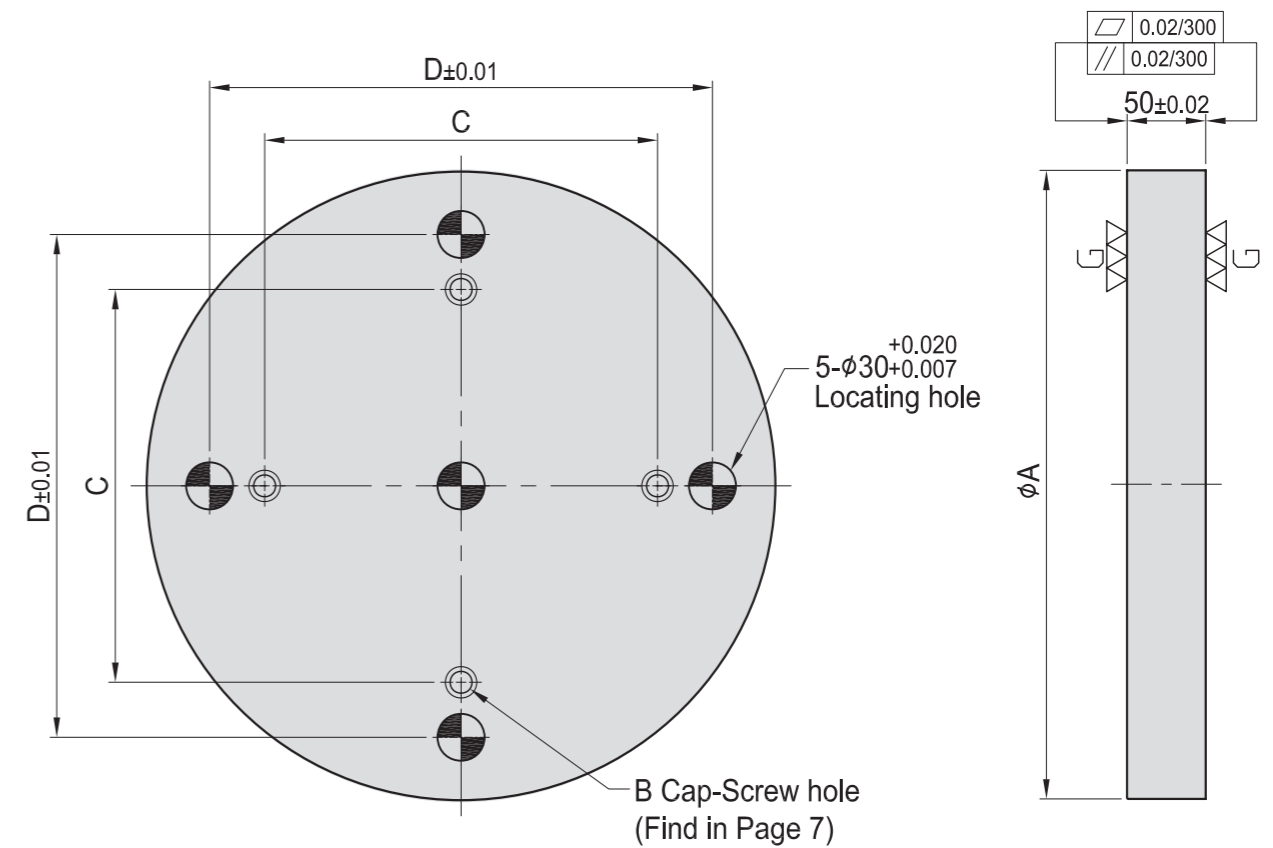
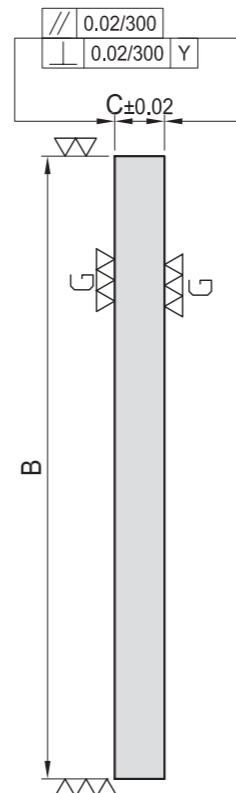
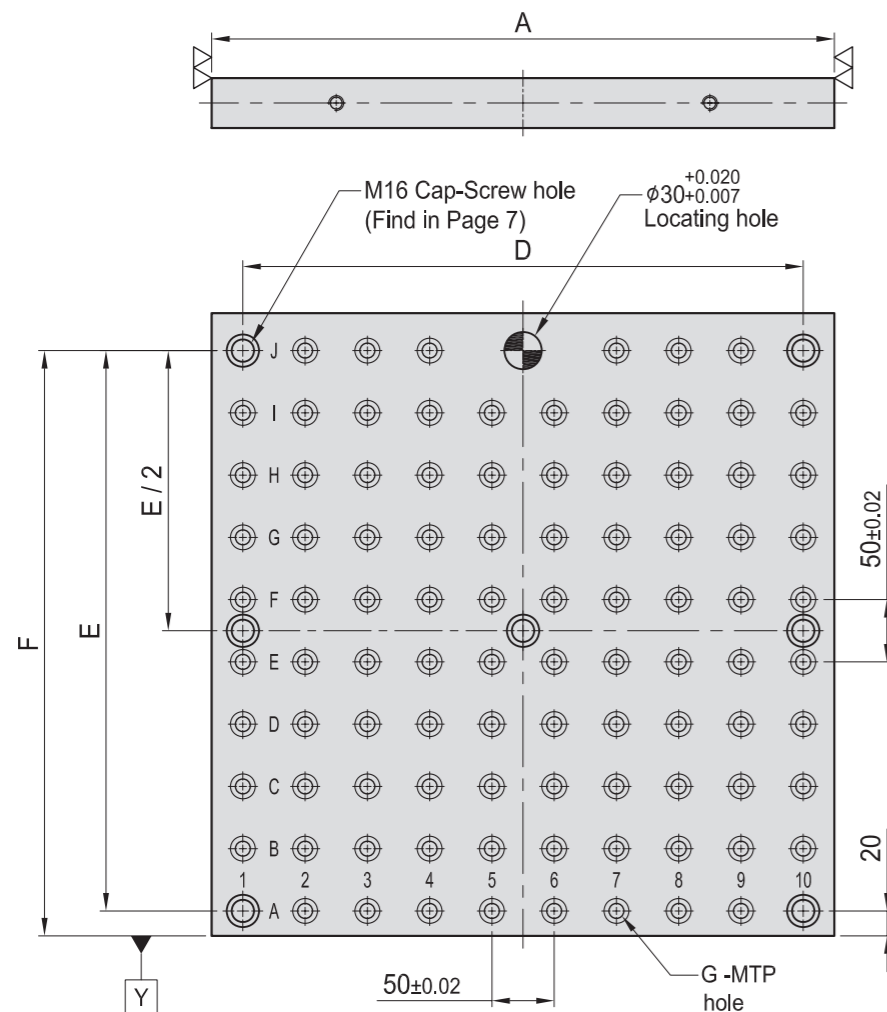


Figure G



MODEL NO.	A	B	C	D	E	F	G	MTP	Mounting holes	kg	
BP15-40400-0400-12	400	400	40	350	350	370	φ12	M12	58	5	42
BP15-40500-0500-12	500	500	40	450	450	470	φ12	M12	94	7	69
BP15-40630-0630-12	630	630	40	580	580	600	φ12	M12	138	7	108
BP15-50800-0800-12	800	800	50	750	750	770	φ12	M12	250	7	220

MODEL NO.	A	B	C	D	E	F	G	MTP	Mounting holes	kg	
BP15-40400-0400-16	400	400	40	350	350	370	φ16	M16	58	5	41
BP15-40500-0500-16	500	500	40	450	450	470	φ16	M16	90	7	67
BP15-40630-0630-16	630	630	40	580	580	600	φ16	M16	138	7	105
BP15-50800-0800-16	800	800	50	750	750	770	φ16	M16	246	7	215

*Special Design Welcome !

MODEL NO.	A	B	C	D	kg
BP16-50-0300	300	M12	150	220	25
BP16-50-0400	400	M12	250	320	40
BP16-50-0500	500	M16	300	400	65
BP16-50-0600	600	M16	400	500	95

*Special Design Welcome !

BP17

ROUND BASE PLATE



- Material / Finish:
Material: Cast Iron FC300(JIS) / GG30(DIN)
Heat treated (Normalized)
Alignment Bushing: SUJ2(JIS) / 100Cr6(DIN), heat treated
Threaded Insert: S45C(JIS) / CK45(DIN), heat treated
MTP hole spacing: 50 ± 0.02
- Application: NC Rotary Table or Indexer.
- Features: Alignment bushing & thread insert at every hole location, easily adapts to standardized jig components.

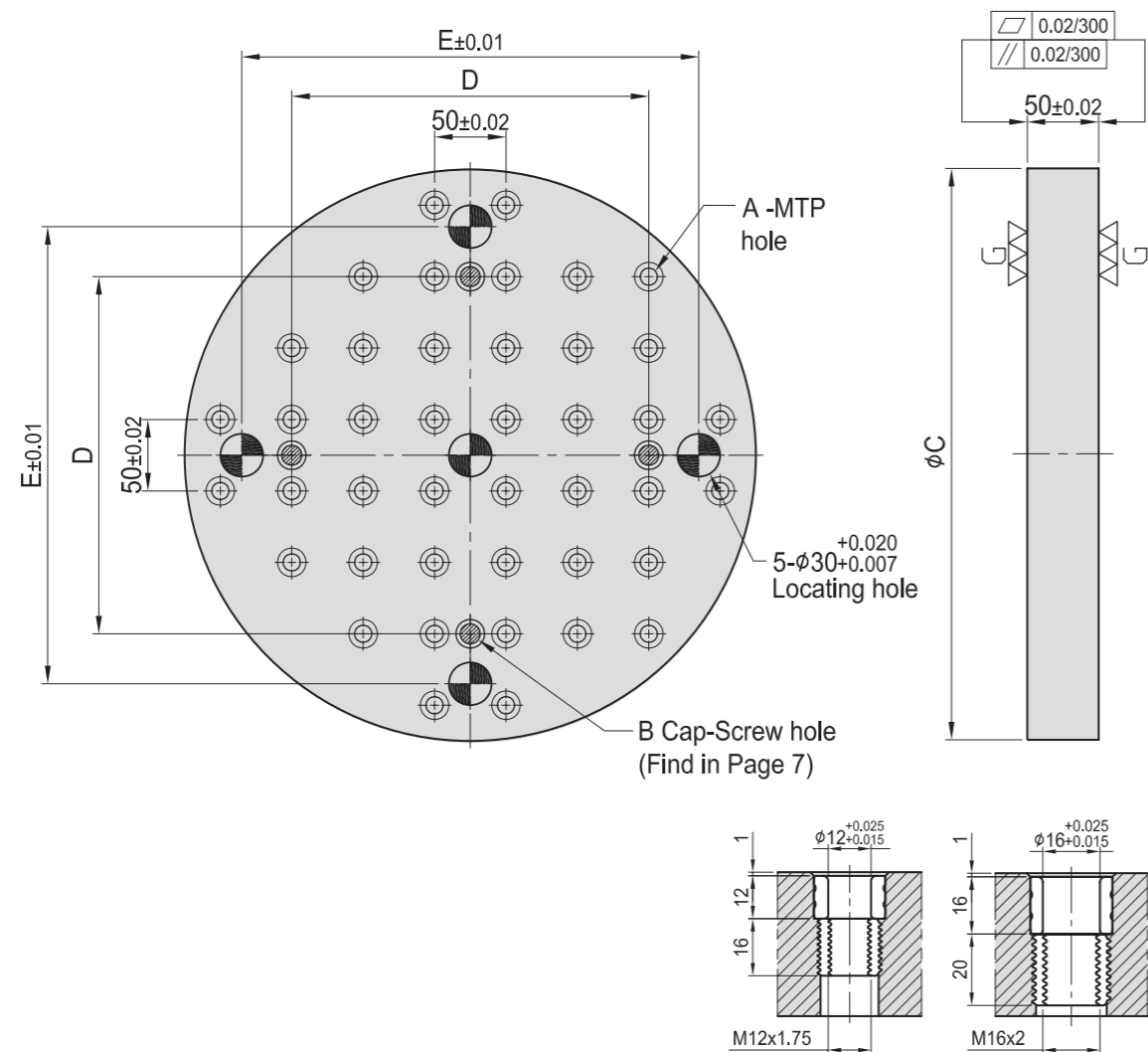


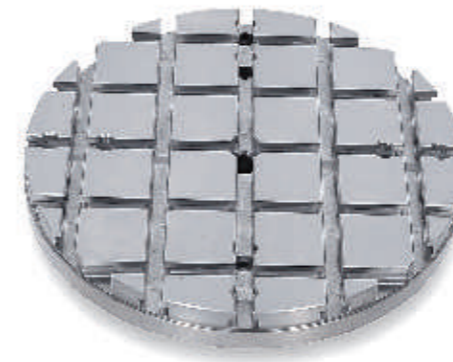
Figure A

MODEL NO.	A	B	C	D	E	MTP	kg
BP17-50-0300-12	φ 12	M12	M12	300	150	220	23
BP17-50-0400-12				400	250	320	42
BP17-50-0500-12	φ 12	M12	M16	500	300	400	70
BP17-50-0600-12				600	400	500	96
BP17-50-0500-16	φ 16	M16	M16	500	300	400	68
BP17-50-0600-16				600	400	500	96

*Special Design Welcome !

BP18

ROUND BASE PLATE



- Material / Finish:
Material: Cast Iron FC300(JIS) / GG30(DIN)
Heat treated (Normalized)
- Application: NC Rotary Table or Indexer.
- Features: T-Slots running in 2 directions, easily adapts to standardized jig components.

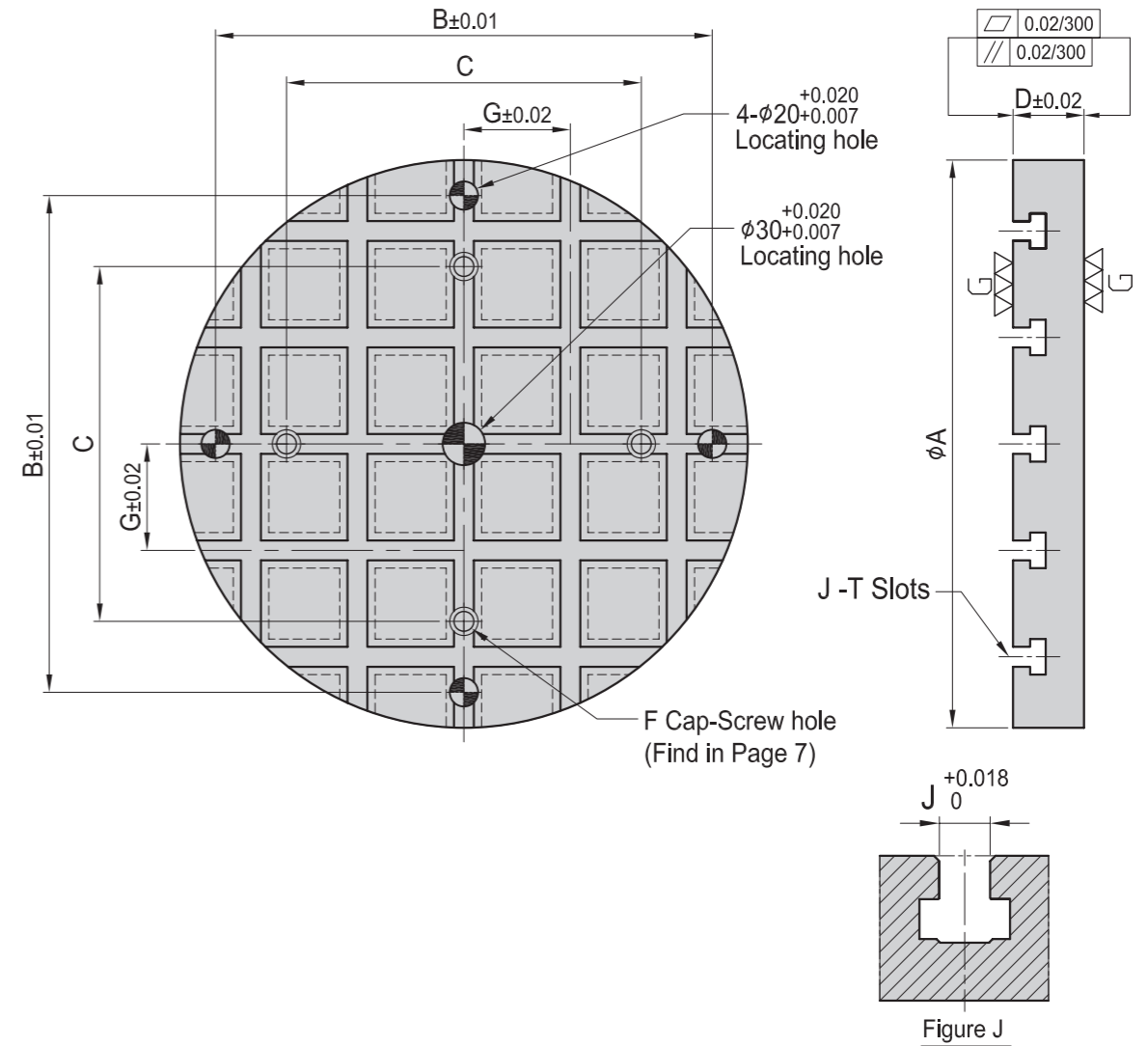


Figure J

MODEL NO.	A	B	C	D	F	G	J	kg
BP18-50-0300-14	300	250	150	50	M12	75	14	22
BP18-50-0400-14								36
BP18-65-0500-18	500	450	300	65	M16	100	18	74
BP18-65-0600-18								110

*Special Design Welcome !

BP

BPA

BC

CP

SU

PT

SVF

ALV

OK-VISE

JER-GENS

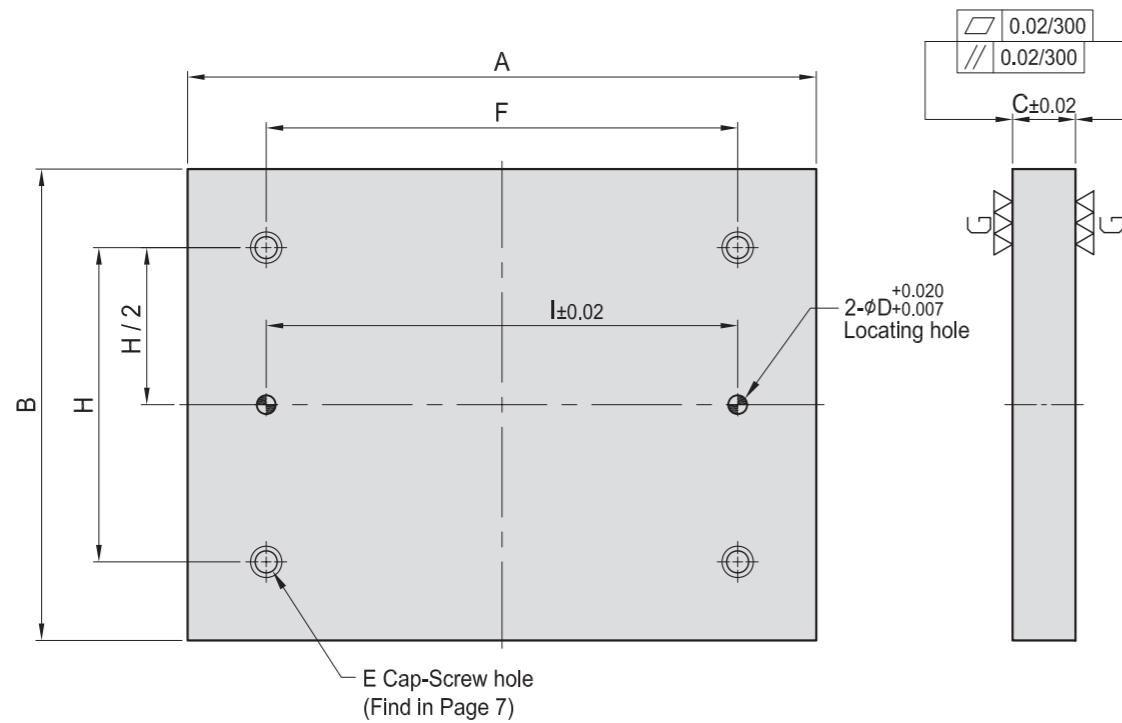
OTHER

Column for Technical Data

BP19

SUB-PLATE

- Material / Finish:
Material: S45C(JIS) / CK45(DIN)
- Application: Multipurpose subplate.
- Features: Ready to accept a hole pattern for your special jig.



MODEL NO.	A	B	C	D	E	F	H	I	kg
BP19-30150-0200-12	200	150	30	12	M12	100	100	100	8.0
BP19-30150-0300-12	300					200		11.0	
BP19-30200-0200-12	200	200	30	12	M12	100	100	100	9.5
BP19-30200-0300-12	300					200		14.5	
BP19-30300-0300-12	300	300	30	12	M12	200	200	200	21.5
BP19-40300-0400-12	400					300		38.0	
BP19-40400-0400-12	400	400	40	12	M12	300	300	300	51.0
BP19-40400-0500-12	500					400		63.0	

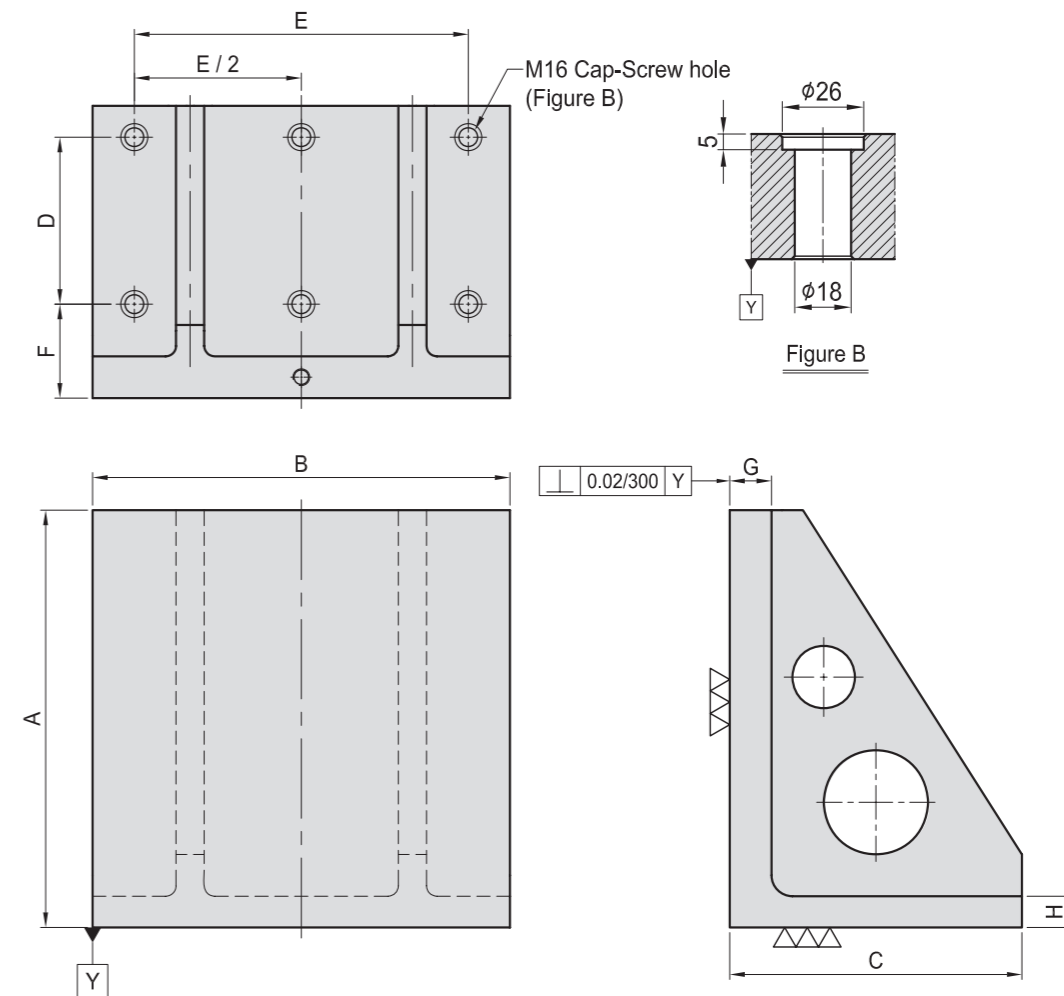
*Special Design Welcome !

MODEL NO.	A	B	C	D	E	F	H	I	kg
BP19-30150-0200-16	200	150	30	16	M16	100	100	100	8.0
BP19-30150-0300-16	300					200		11.0	
BP19-30200-0200-16	200	200	30	16	M16	100	100	100	9.5
BP19-30200-0300-16	300					200		14.5	
BP19-30300-0300-16	300	300	30	16	M16	200	200	200	21.5
BP19-40300-0400-16	400					300		38.0	
BP19-40400-0400-16	400	400	40	16	M16	300	300	300	51.0
BP19-40400-0500-16	500					400		63.0	

BP20

M/C ANGLE PLATE

- Material / Finish:
Material: Cast Iron FC300(JIS) / GG30(DIN)
Heat treated (Normalized)
- Application: HMC / VMC
- Features: Ready to accept a hole pattern for your special jig.



MODEL NO.	A	B	C	D	E	F	G	H	Mounting holes	kg
BP20-220300-0300	300	300	220	100	250	90	40	30	6	50
BP20-280400-0400	400	400	280	160	320					90
BP20-340500-0500	500	500	340	200	400	90	50	35	6	165
BP20-435630-0630	630	630	435	250	500					40
BP20-525800-0800	800	800	525	320	640	115	50	45	6	475

*Special Design Welcome !

BP

BPA

BC

CP

SU

PT

SVF

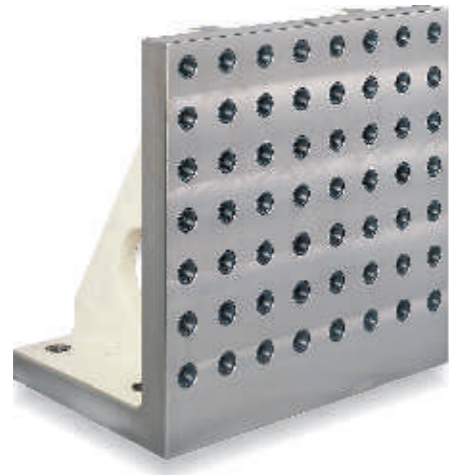
ALV

OK-
VISE

JER-
GENS

OTHER

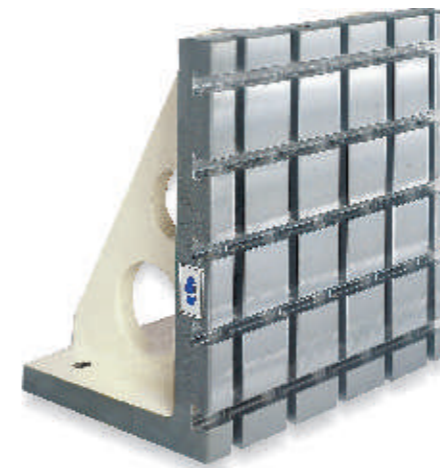
Column
for
Technical
Data



BP21

M/C ANGLE PLATE

- Material / Finish:
Material: Cast Iron FC300(JIS) / GG30(DIN)
Heat treated (Normalized)
Alignment Bushing: SUJ2(JIS) / 100Cr6(DIN), heat treated
Threaded Insert: S45C(JIS) / CK45(DIN), heat treated
MTP hole spacing: 50±0.02
- Application: HMC / VMC.
- Features: Alignment bushing & thread insert at every hole location, easily adapts to standardized jig components.



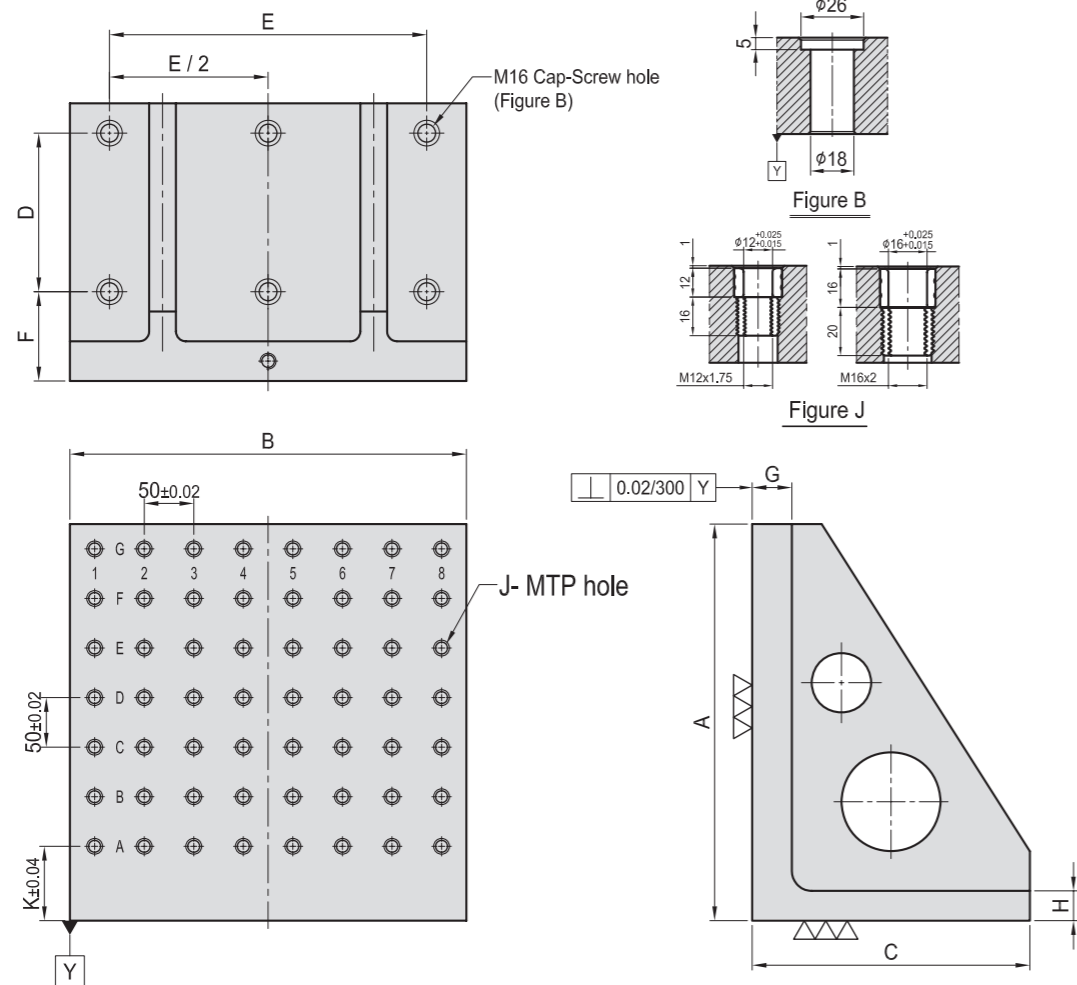
BP22

M/C ANGLE PLATE

- Material / Finish:
Material: Cast Iron FC300(JIS) / GG30(DIN)
Heat treated (Normalized)
- Application: HMC / VMC.
- Features: T-Slots running in 2 directions, easily adapts to standardized jig components.

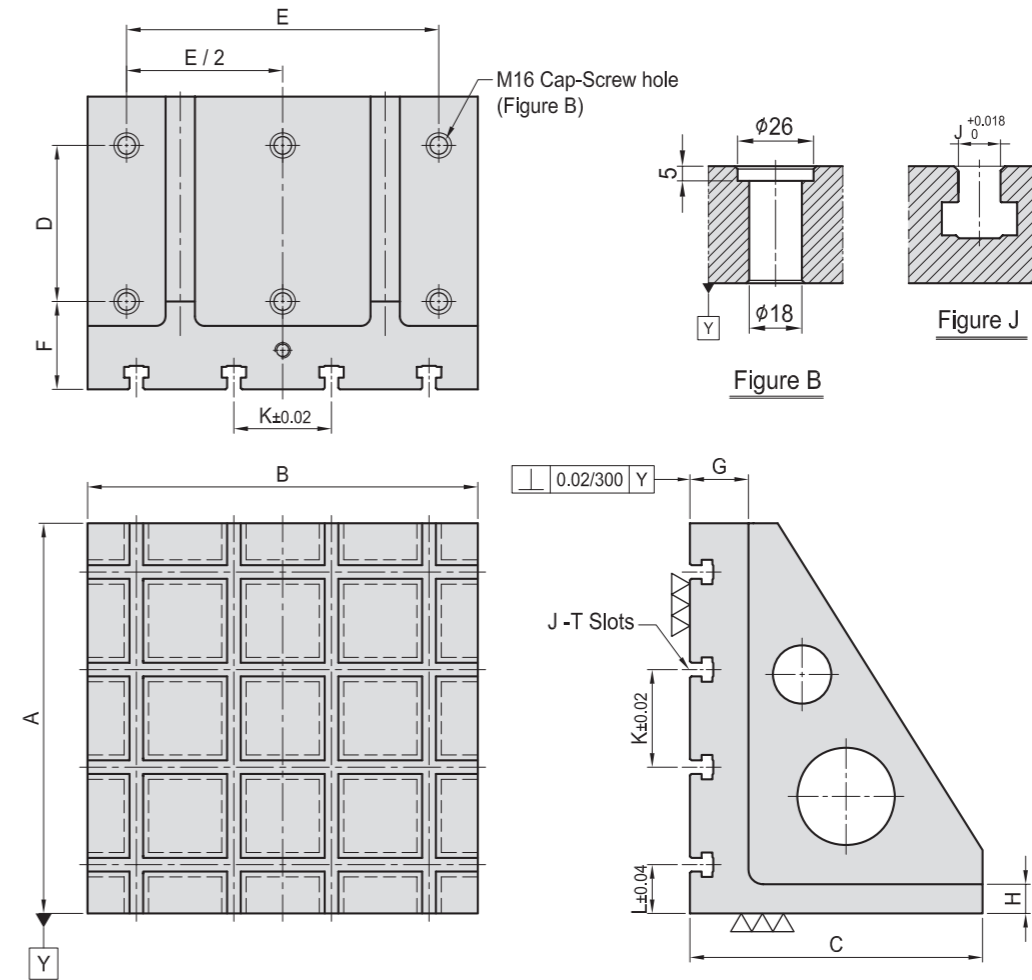
- BP
- BPA
- BC
- CP
- SU
- PT
- SVF
- ALV
- OK-VISE
- JER-GENS
- OTHER

Column for Technical Data



MODEL NO.	A	B	C	D	E	F	G	H	J	K	MTP	Mounting holes	kg
BP21-220300-0300-12	300	300	220	100	250	90	40	30	φ 12	M12	75	30	50
BP21-280400-0400-12	400	400	280	160	320	90	40	30	φ 12	M12	75	56	87
BP21-340500-0500-12	500	500	340	200	400	90	50	35	φ 12	M12	75	90	173
BP21-435630-0630-12	630	630	435	250	500	100	50	40	φ 12	M12	40	144	300
BP21-525800-0800-12	800	800	525	320	640	115	50	45	φ 12	M12	75	240	477
BP21-220300-0300-16	300	300	220	100	250	90	40	30	φ 16	M16	75	30	46
BP21-280400-0400-16	400	400	280	160	320	90	40	30	φ 16	M16	75	56	85
BP21-340500-0500-16	500	500	340	200	400	90	50	35	φ 16	M16	75	90	170
BP21-435630-0630-16	630	630	435	250	500	100	50	40	φ 16	M16	40	144	295
BP21-525800-0800-16	800	800	525	320	640	115	50	45	φ 16	M16	75	240	470

*Special Design Welcome !



MODEL NO.	A	B	C	D	E	F	G	H	J	K	L	Mounting holes	kg
BP22-220300-0300-14	300	300	220	100	250	90	60	30	14	100	50	6	53
BP22-300400-0400-14	400	400	300	160	320	90	60	30	14	100	50	6	101
BP22-350500-0500-14	500	500	350	200	400	90	60	35	14	100	50	6	170
BP22-450630-0630-14	630	630	450	250	500	100	65	40	18	125	65	6	295
BP22-550800-0800-14	800	800	550	320	640	115	75	45	14	150	100	6	566
BP22-220300-0300-18	300	300	220	100	250	90	60	30	18	100	50	6	51
BP22-300400-0400-18	400	400	300	160	320	90	60	30	18	100	50	6	96
BP22-350500-0500-18	500	500	350	200	400	90	60	35	18	100	50	6	162
BP22-450630-0630-18	630	630	450	250	500	100	65	40	18	125	65	6	285
BP22-550800-0800-18	800	800	550	320	640	115	75	45	18	150	100	6	555

*Special Design Welcome !



BP23

MC NARROW ANGLE PLATE

- Material / Finish:
Material: Cast Iron FC300(JIS) / GG30(DIN)
Heat treated (Normalized)
- Application: HMC / VMC.
- Features: Ready to accept a hole pattern for your special jig.



BP24

MC NARROW ANGLE PLATE

- Material / Finish:
Material: Cast Iron FC300(JIS) / GG30(DIN)
Heat treated (Normalized)
- Application: HMC / VMC.
- Features: Alignment bushing & thread insert at every hole location, easily adapts to standardized jig components.

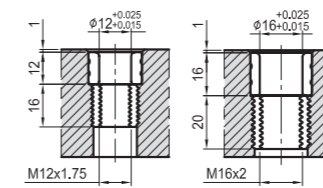
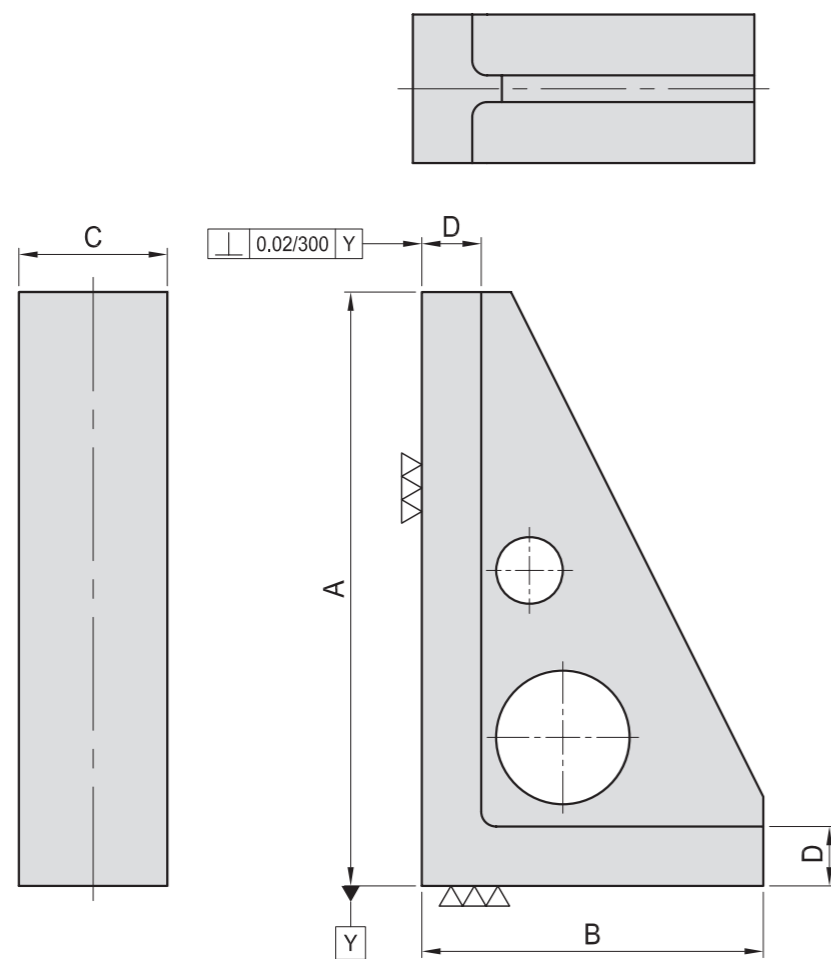


Figure G

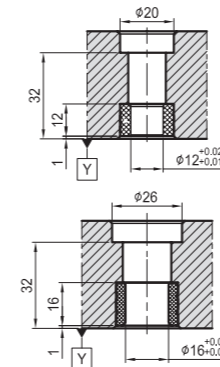
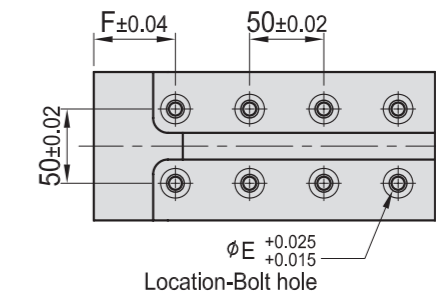
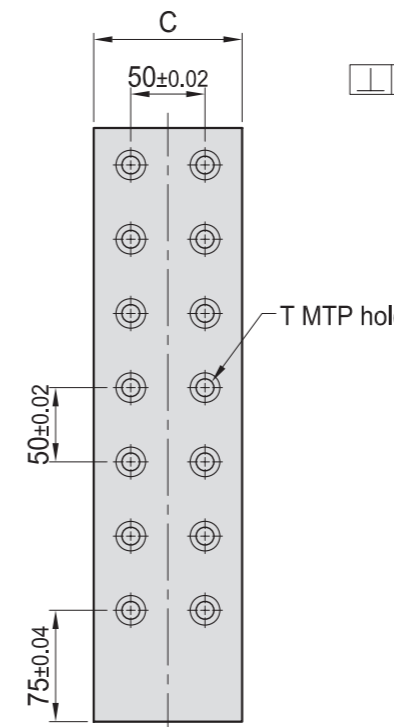
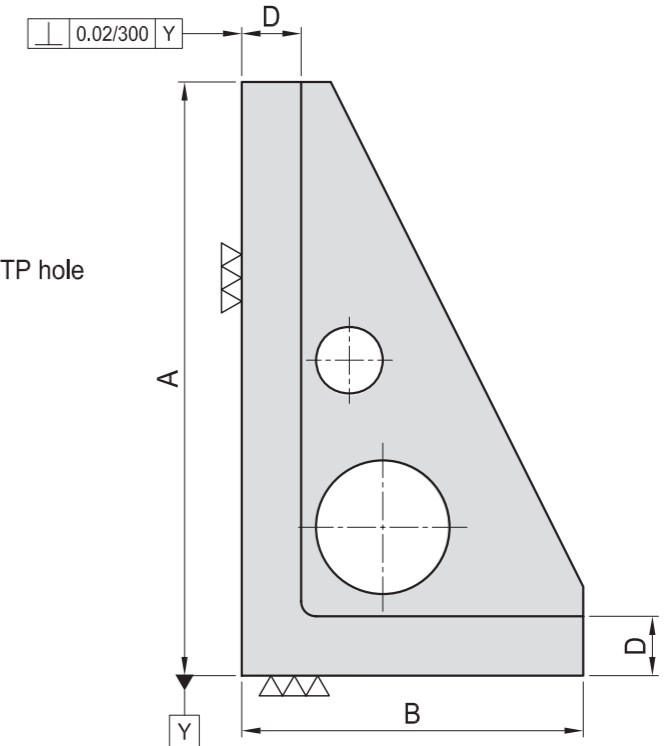


Figure E



Location-Bolt hole



MODEL NO.	A	B	C	D	kg
BP23-180100-0300	300	180	100	40	14
BP23-230100-0400	400	230	100	40	20
BP23-280100-0500	500	280	100	40	25

*Special Design Welcome !

MODEL NO.	A	B	C	D	E	F	T	MTP	Mounting holes	kg
BP24-180100-0300-12	300	180						10	6	12
BP24-230100-0400-12	400	230	100	40	12	55	phi 12	M12	14	19
BP24-280100-0500-12	500	280							18	23
BP24-180100-0300-16	300	180						10	6	13
BP24-230100-0400-16	400	230	100	40	16	55	phi 16	M16	14	20
BP24-280100-0500-16	500	280						18	10	24

*Special Design Welcome !

BP

BPA

BC

CP

SU

PT

SVF

ALV

OK-VISE

JER-GENS

OTHER

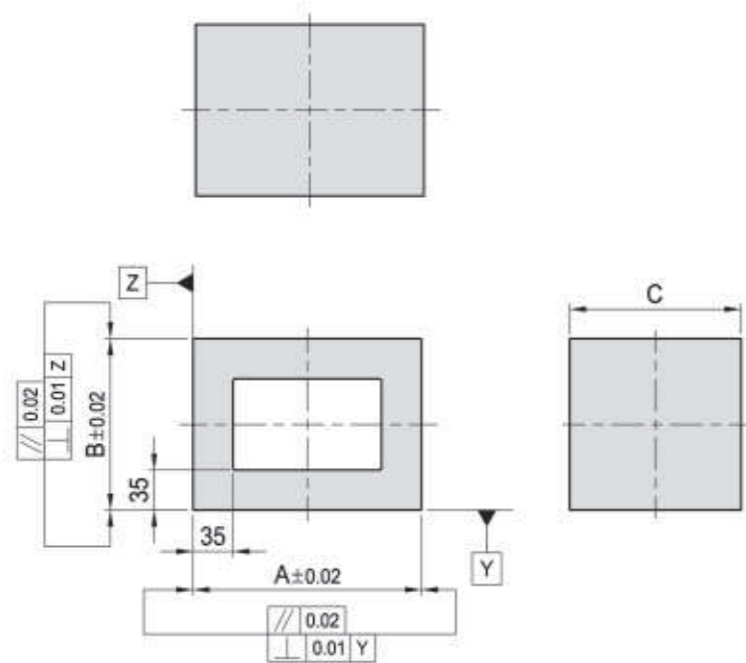
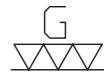
Column for Technical Data

BP25

RECTANGULAR CAST SECTION



- Material / Finish:
Material: Cast Iron FC300(JIS) / GG30(DIN)
Heat treated (Normalized)
- Application: Cast sections provide a fast & economical way to make special jig components.
- Features: Ready to accept a hole pattern for your special jig.



MODEL NO.	A	B	C	kg
BP25-200150-0150	200	150	150	23
BP25-250150-0200	250	200	150	30
BP25-300200-0250	300	250	200	56

*Special Design Welcome !

BP26

RECTANGULAR CAST SECTION



- Material / Finish:
Material: Cast Iron FC300(JIS) / GG30(DIN)
Heat treated (Normalized)
- Application: Cast sections provide a fast & economical way to make special jig components.
- Features: Alignment bushing & thread insert at every hole location, easily adapts to standardized jig components.

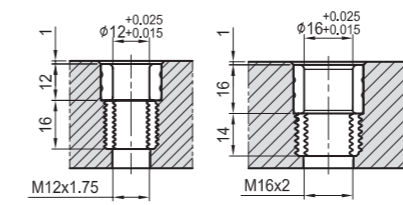
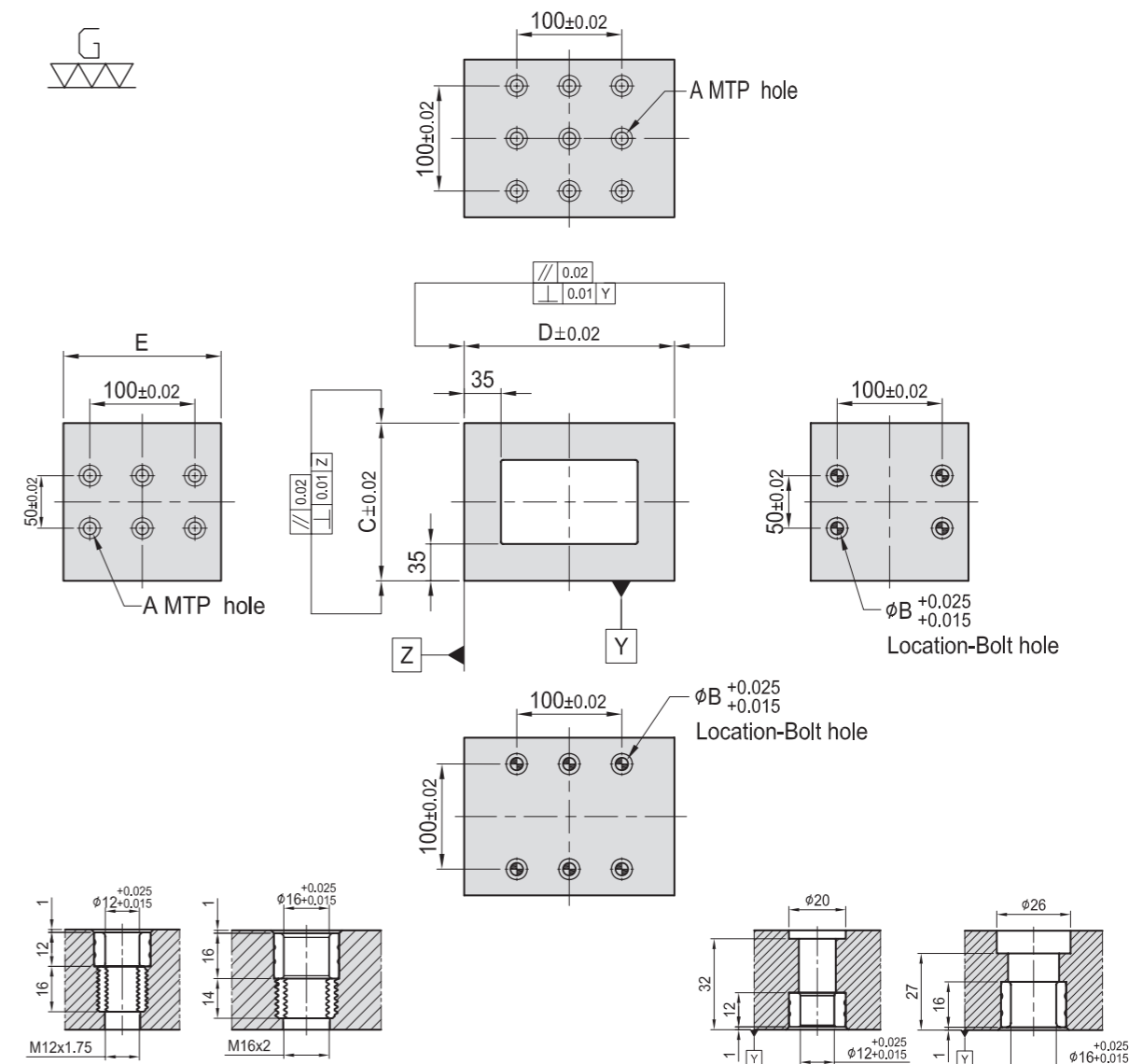


Figure A

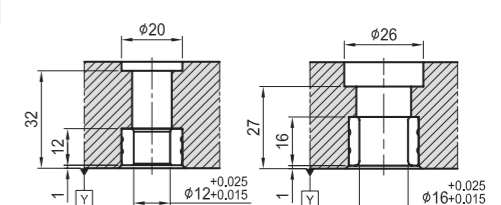


Figure B

MODEL NO.	A	B	C	D	E	MTP	Mounting holes	kg
BP26-200150-0150-12	φ 12	M12	12	150	150	15	10	23
200				21		14	28	
BP26-200150-0150-16	φ 16	M16	16	150	150	15	10	29
200				21		14	30	

*Special Design Welcome !

BP

BPA

BC

CP

SU

PT

SVF

ALV

OK-VISE

JER-GENS

OTHER

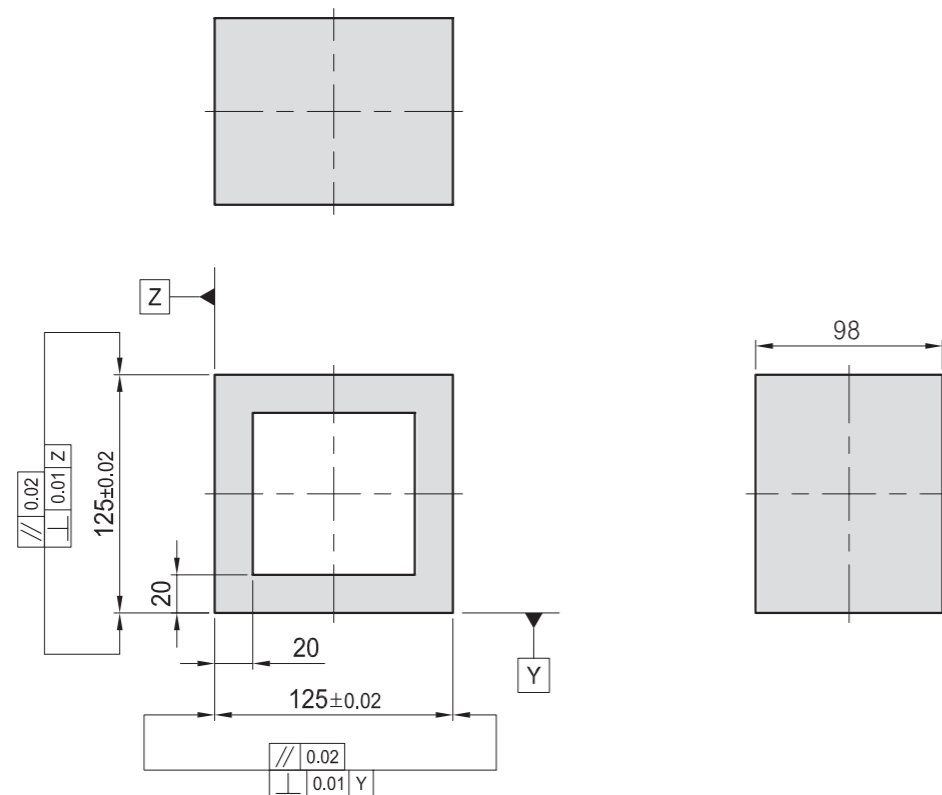
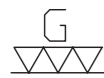
Column for Technical Data

BP27

RECTANGULAR CAST SECTION



- Material / Finish:
Material: Cast Iron FC300(JIS) / GG30(DIN)
Heat treated (Normalized)
- Application: Cast sections provide a fast & economical way to make special jig components.
- Features: Ready to accept a hole pattern for your special jig.



MODEL NO.	kg
BP27-125098-125	6

*Special Design Welcome !

BP28

RECTANGULAR CAST SECTION



- Material / Finish:
Material: Cast Iron FC300(JIS) / GG30(DIN)
Heat treated (Normalized)
- Application: Cast sections provide a fast & economical way to make special jig components.
- Features: Alignment bushing & thread insert at every hole location, easily adapts to standardized jig components.

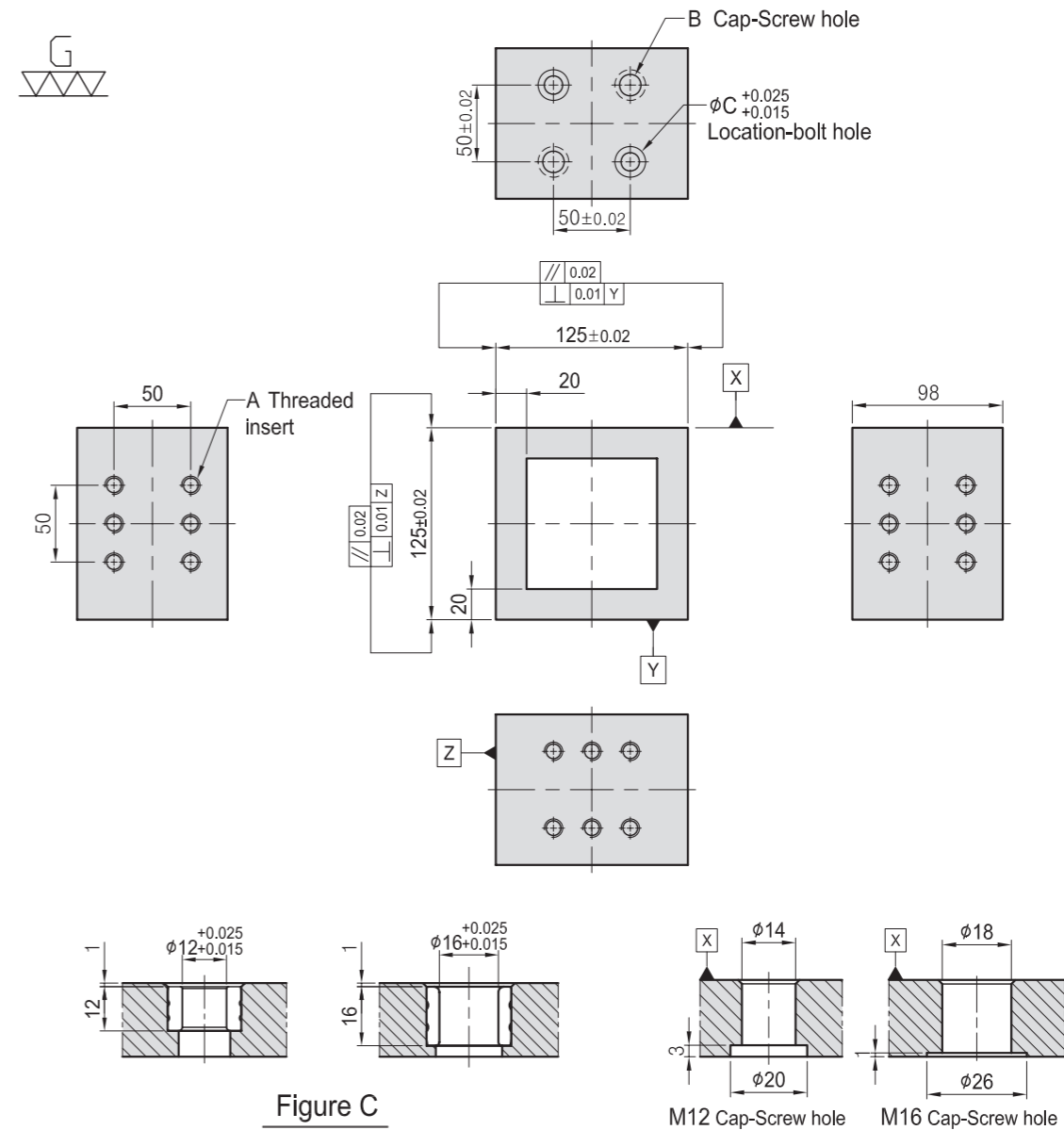


Figure C

Figure B

MODEL NO.	A	B	C	kg
BP28-125098-125-12	M12	M12	12	5.8
BP28-125098-125-16	M16	M16	16	5.5

*Special Design Welcome !

BP

BPA

BC

CP

SU

PT

SVF

ALV

OK-
VISE

JER-
GENS

OTHER

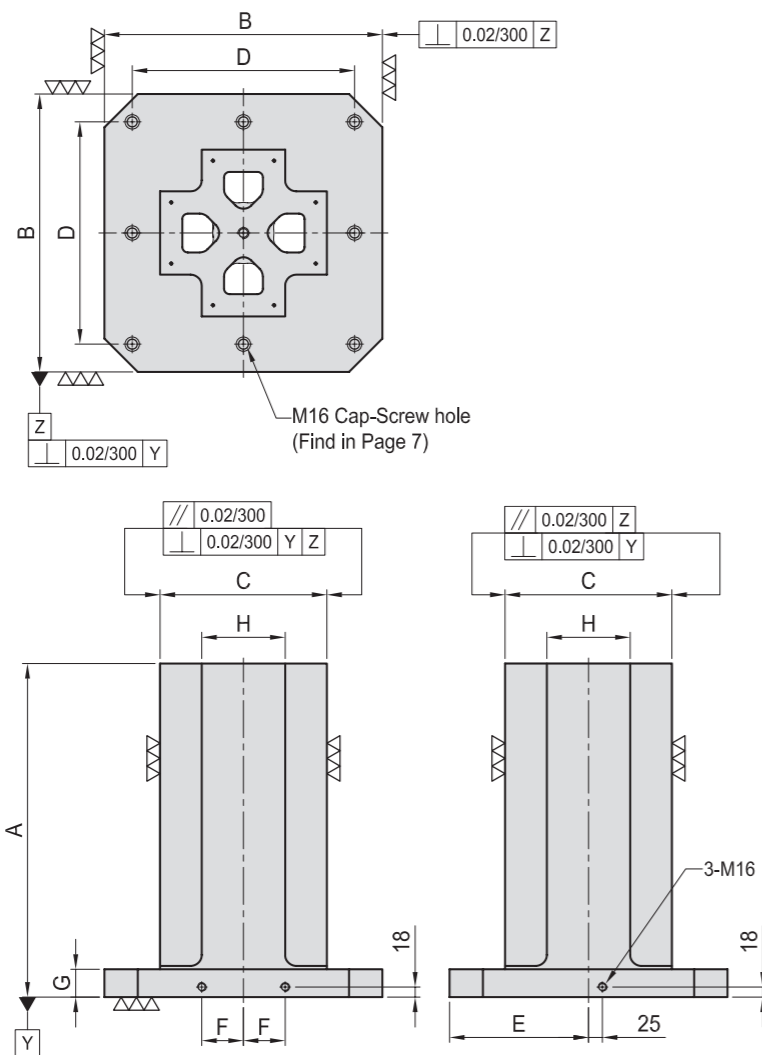
Column
for
Technical
Data



BP29

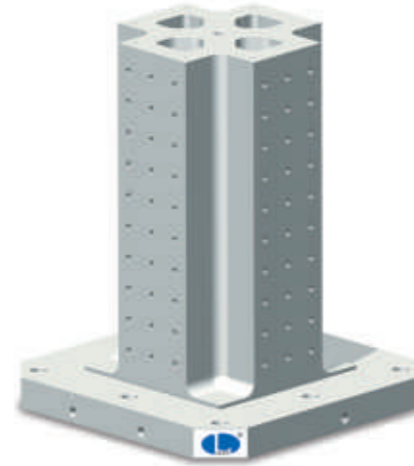
CROSS TOOLING COLUMN

- Material / Finish:
Material: Cast Iron FC300(JIS) / GG30(DIN)
Heat treated (Normalized)
- Application: Horizontal Machining Center.
- Features: Ready to accept a hole pattern for your special jig.
• Eye bolt & top cover included.



MODEL NO.	A	B	C	D	E	F	G	H	Mounting holes	kg
BP29-400400-0500	500	400	250	320	200	55	50	125	4	154
BP29-400400-0650	650									188
BP29-500500-0600	600	500	300	400	250	75	50	150	8	244
BP29-500500-0750	750									287
BP29-630630-0700	700	630	350	500	315	100	50	200	8	373
BP29-630630-0850	850									424
BP29-800800-0800	800	800	500	640	400	135	50	300	8	648
BP29-800800-1000	1000									753

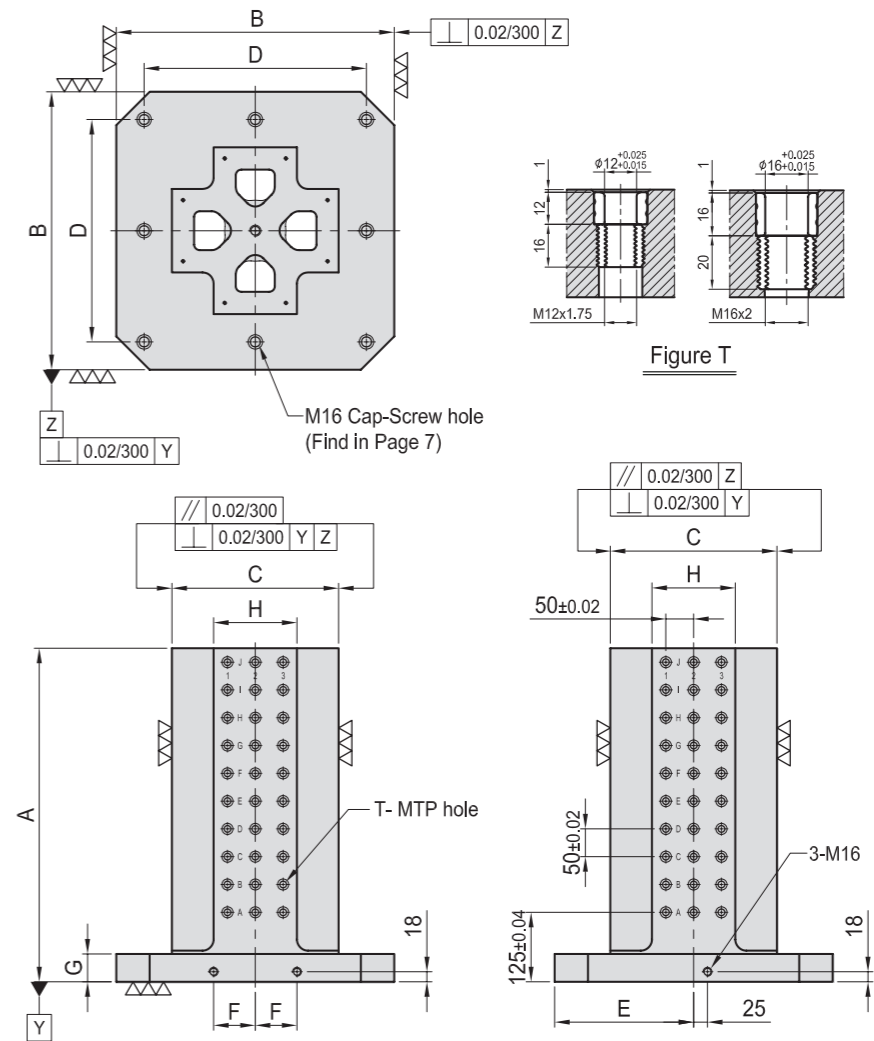
*Special Design Welcome !



BP30

CROSS TOOLING COLUMN

- Material / Finish:
Material: Cast Iron FC300 (JIS) / GG30 (DIN)
Heat treated (Normalized)
Alignment bushing: SUJ2(JIS) / 100Cr6(DIN), heat treated
Threaded Insert: S45C(JIS) / CK45(DIN), heat treated
MTP hole spacing: 50±0.02
- Application: Horizontal Machining Center.
- Features: Alignment bushing & thread insert at every hole location, easily adapts to standardized jig components.
• Eye bolt & top cover included.



MODEL NO.	A	B	C	D	E	F	G	H	T	MTP	Mounting holes	kg
BP30-400400-0500-12	500	400	250	320	200	55	50	125	φ12	M12	64	152
BP30-400400-0650-12	650										88	186
BP30-500500-0600-12	600	500	300	400	250	75	50	150	φ12	M12	120	250
BP30-500500-0750-12	750										156	293
BP30-630630-0700-12	700	630	350	500	315	100	50	200	φ12	M12	192	368
BP30-630630-0850-12	850										240	418
BP30-800800-0800-12	800	800	500	640	400	135	50	300	φ12	M12	336	640
BP30-800800-1000-12	1000										432	740

*Special Design Welcome !

MODEL NO.	A	B	C	D	E	F	G	H	T	MTP	Mounting holes	kg
BP30-400400-0500-16	500	400	250	320	200	55	50	125	φ16	M16	64	151
BP30-400400-0650-16	650										88	184
BP30-500500-0600-16	600	500	300	400	250	75	50	150	φ16	M16	120	247
BP30-500500-0750-16	750										156	290
BP30-630630-0700-16	700	630	350	500	315	100	50	200	φ16	M16	192	364
BP30-630630-0850-16	850										240	413
BP30-800800-0800-16	800	800	500	640	400	135	50	300	φ16	M16	336	633
BP30-800800-1000-16	1000										432	733

BP

BPA

BC

CP

SU

PT

SVF

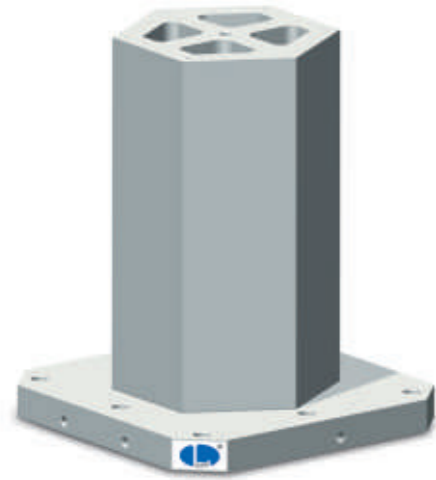
ALV

OK-
VISE

JER-
GENS

OTHER

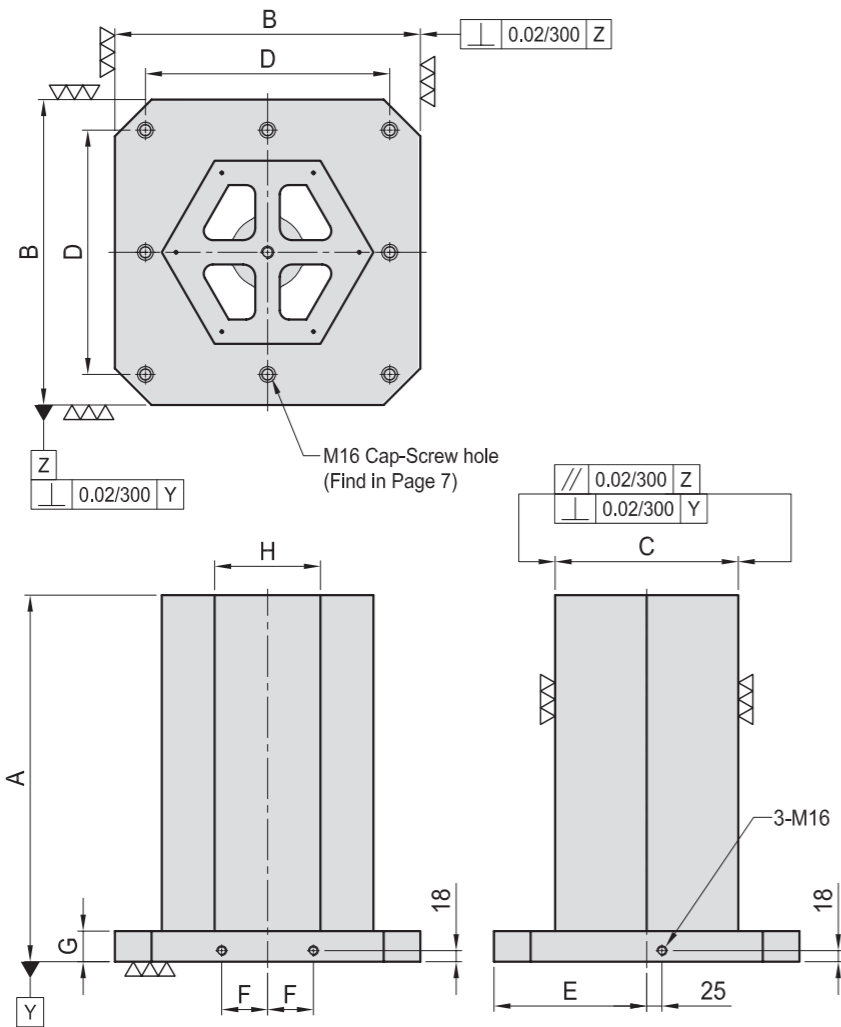
Column
for
Technical
Data



BP31

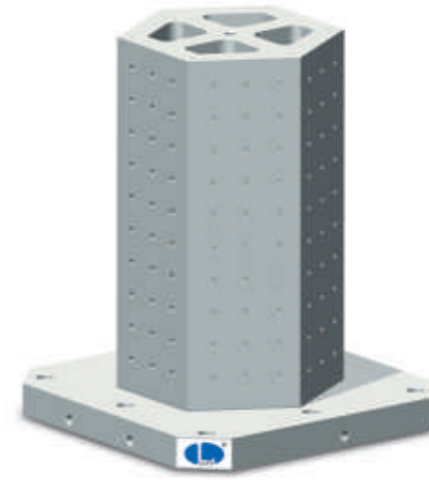
HEXAGONAL CUBE

- Material / Finish:
Material: Cast Iron FC300(JIS) / GG30(DIN)
Heat treated (Normalized)
- Application: Horizontal Machining Center.
- Features: Ready to accept a hole pattern for your special jig.
• Eye bolt & top cover included.



MODEL NO.	A	B	C	D	E	F	G	H	Mounting holes	kg
BP31-400400-0500	500	400	250	320	200	55	50	144	4	151
BP31-400400-0650	650									183
BP31-500500-0600	600	500	300	400	250	75	50	173	8	233
BP31-500500-0750	750									272
BP31-630630-0700	700	630	350	500	315	100	50	202	8	361
BP31-630630-0850	850									408
BP31-800800-0800	800	800	500	640	400	135	50	289	8	619
BP31-800800-1000	1000									713

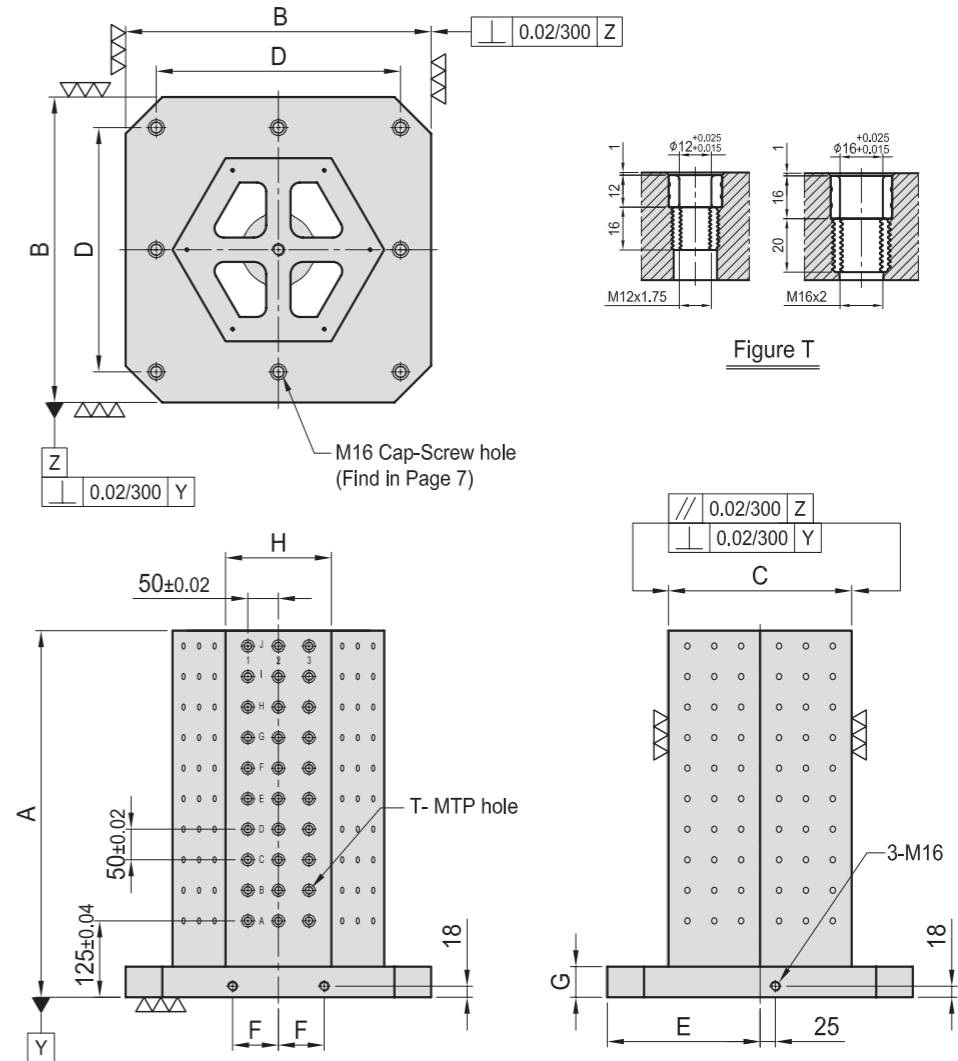
*Special Design Welcome !



BP32

HEXAGONAL CUBE

- Material / Finish:
Material: Cast Iron FC300 (JIS) / GG30 (DIN)
Heat treated (Normalized)
- Alignment bushing: SUJ2(JIS) / 100Cr6(DIN), heat treated
- Threaded Insert: S45C(JIS) / CK45(DIN), heat treated
- MTP hole spacing: 50±0.02
- Application: Horizontal Machining Center.
- Features: Alignment bushing & thread insert at every hole location, easily adapts to standardized jig components.
- Eye bolt & top cover included.



MODEL NO.	A	B	C	D	E	F	G	H	T	MTP	Mounting holes	kg	MODEL NO.	A	B	C	D	E	F	G	H	T	MTP	Mounting holes	kg
BP32-400400-0500-12	500	400	250	320	200	55	50	144	φ12	M12	96	149	BP32-400400-0500-16	500	400	250	320	200	55	50	144	φ16	M16	96	147
BP32-400400-0650-12	650										132	180	BP32-400400-0650-16	650										132	177
BP32-500500-0600-12	600	500	300	400	250	75	50	173	φ12	M12	180	228	BP32-500500-0600-16	600	500	300	400	250	75	50	173	φ16	M16	180	224
BP32-500500-0750-12	750										234	267	BP32-500500-0750-16	750										234	262
BP32-630630-0700-12	700	630	350	500	315	100	50	202	φ12	M12	216	356	BP32-630630-0700-16	700	630	350	500	315	100	50	202	φ16	M16	216	351
BP32-630630-0850-12	850										270	407	BP32-630630-0850-16	850										270	396
BP32-800800-0800-12	800	800	500	640	400	135	50	289	φ12	M12	420	609	BP32-800800-0800-16	800	800	500	640	400	135	50	289	φ16	M16	420	600
BP32-800800-1000-12	1000										540	700	BP32-800800-1000-16	1000										540	688

*Special Design Welcome !

BP

BPA

BC

CP

SU

PT

SVF

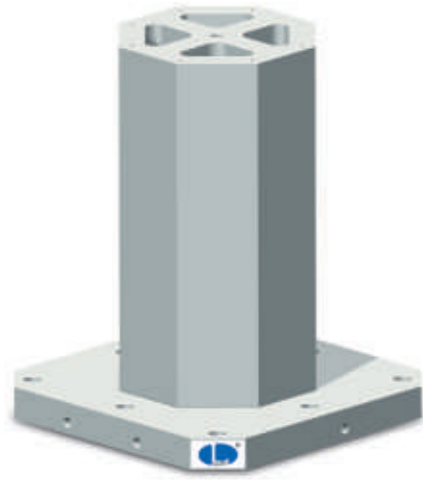
ALV

OK-VISE

JER-GENS

OTHER

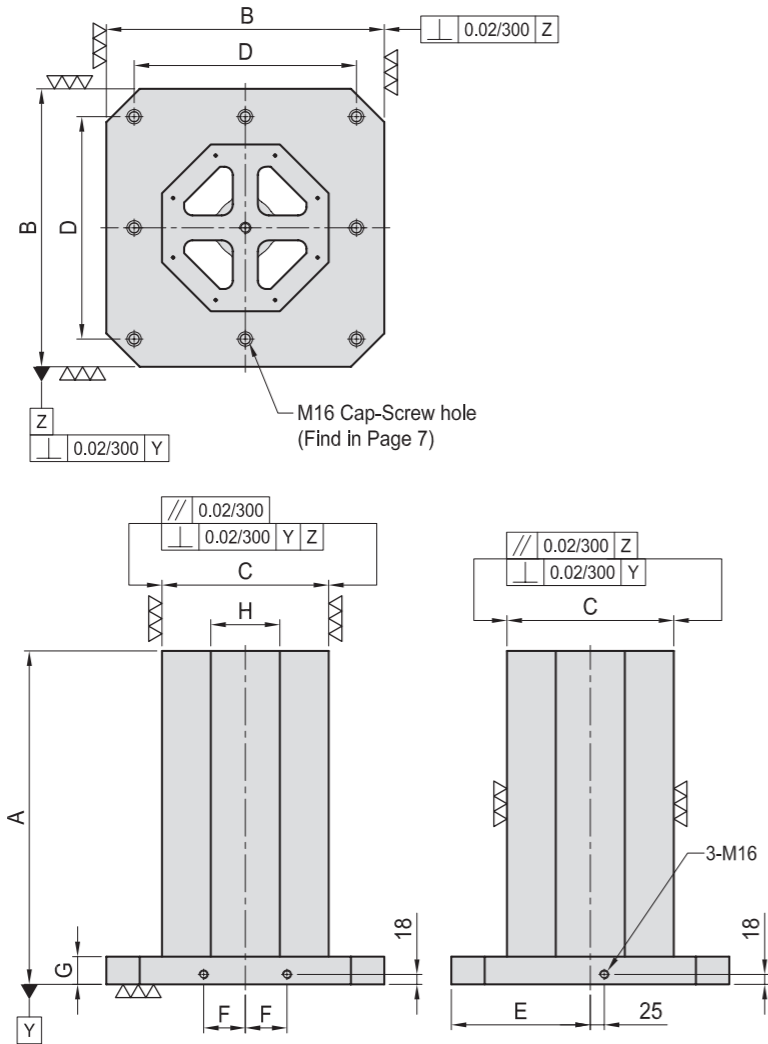
Column for Technical Data



BP33

OCTAGONAL CUBE

- Material / Finish:
Material: Cast Iron FC300(JIS) / GG30(DIN)
Heat treated (Normalized)
- Application: Horizontal Machining Center.
- Features: Ready to accept a hole pattern for your special jig.
• Eye bolt & top cover included.



MODEL NO.	A	B	C	D	E	F	G	H	Mounting holes	kg
BP33-400400-0500	500	400	250	320	200	55	50	103	4	148
BP33-400400-0650	650									
BP33-500500-0600	600	500	300	400	250	75	50	124	8	227
BP33-500500-0750	750									
BP33-630630-0700	700	630	350	500	315	100	50	145	8	350
BP33-630630-0850	850									
BP33-800800-0800	800	800	500	640	400	135	50	207	8	622
BP33-800800-1000	1000									

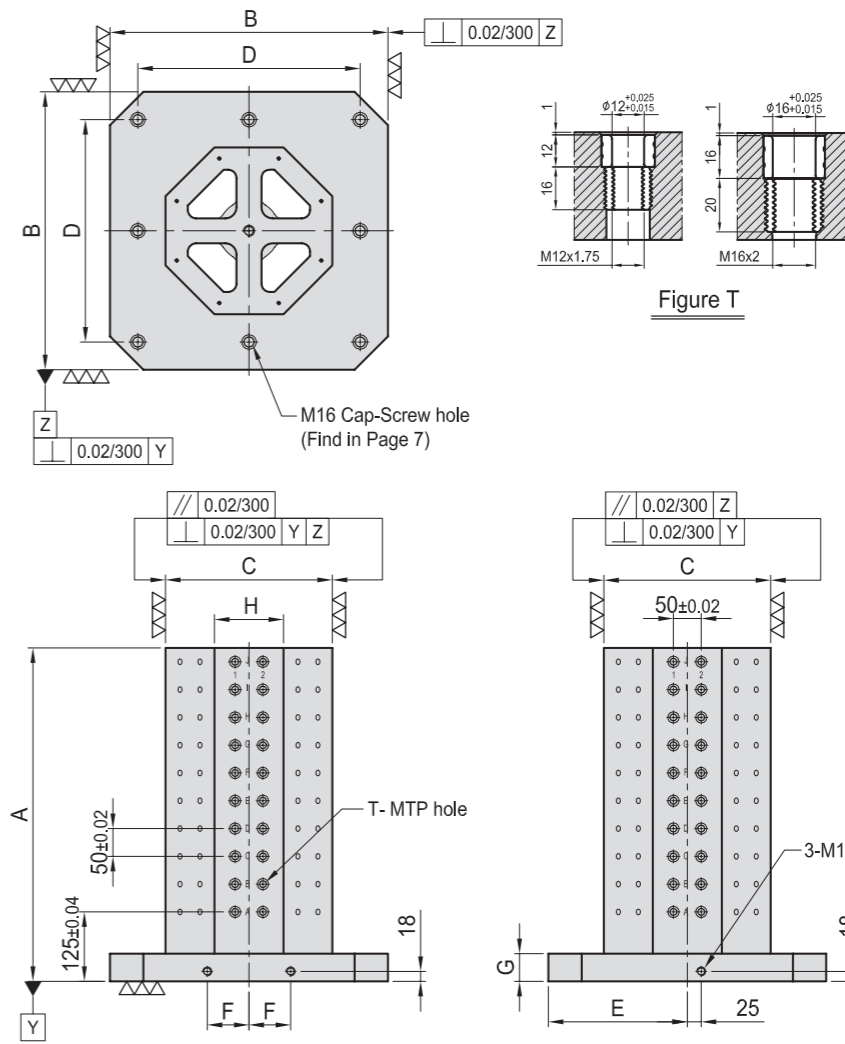
*Special Design Welcome !



BP34

OCTAGONAL CUBE

- Material / Finish:
Material: Cast Iron FC300 (JIS) / GG30 (DIN)
Heat treated (Normalized)
- Alignment bushing: SUJ2(JIS) / 100Cr6(DIN), heat treated
- Threaded Insert: S45C(JIS) / CK45(DIN), heat treated
- MTP hole spacing: 50±0.02
- Application: Horizontal Machining Center.
- Features: Alignment bushing & thread insert at every hole location, easily adapts to standardized jig components.
- Eye bolt & top cover included.



MODEL NO.	A	B	C	D	E	F	G	H	T	MTP	Mounting holes	kg
BP34-400400-0500-12	500	400	250	320	200	55	50	103	φ12	M12	4	145
BP34-400400-0650-12	650											
BP34-500500-0600-12	600	500	300	400	250	75	50	124	φ12	M12	8	223
BP34-500500-0750-12	750											
BP34-630630-0700-12	700	630	350	500	315	100	50	145	φ12	M12	8	345
BP34-630630-0850-12	850											
BP34-800800-0800-12	800	800	500	640	400	135	50	207	φ12	M12	8	611
BP34-800800-1000-12	1000											
BP34-400400-0500-16	500	400	250	320	200	55	50	103	φ16	M16	4	142
BP34-400400-0650-16	650											
BP34-500500-0600-16	600	500	300	400	250	75	50	124	φ16	M16	8	219
BP34-500500-0750-16	750											
BP34-630630-0700-16	700	630	350	500	315	100	50	145	φ16	M16	8	341
BP34-630630-0850-16	850											
BP34-800800-0800-16	800	800	500	640	400	135	50	207	φ16	M16	8	601
BP34-800800-1000-16	1000											

*Special Design Welcome !

BP

BPA

BC

CP

SU

PT

SVF

ALV

OK-
VISE

JER-
GENS

OTHER

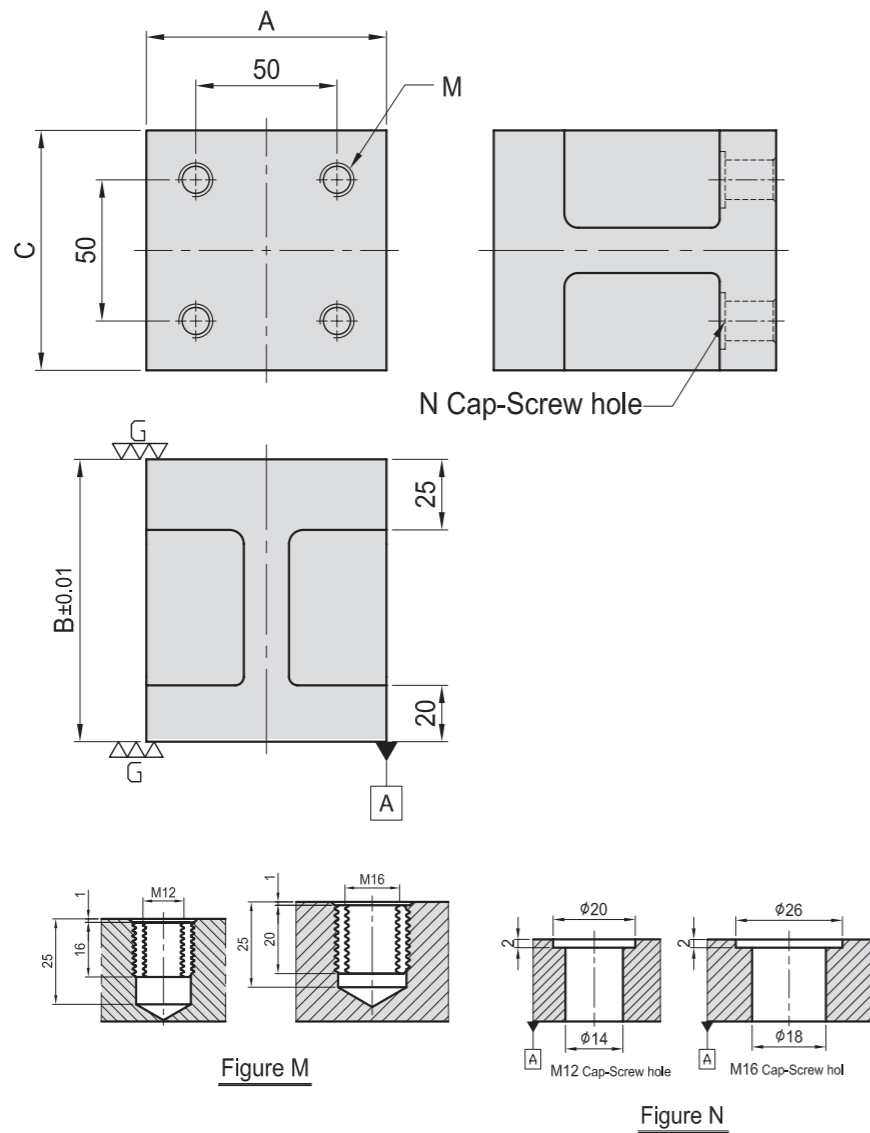
Column
for
Technical
Data



BP35

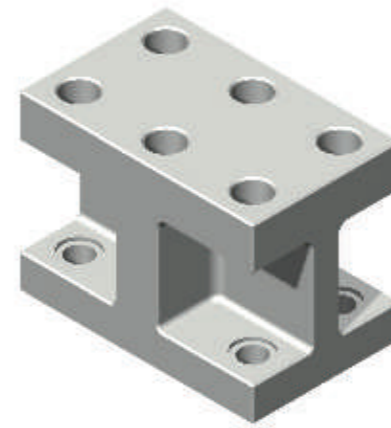
H/CAST SECTION

- Material / Finish:
Material: Cast Iron FC300(JIS) / GG30(DIN)
- Heat treated (Normalized)
- Features: Easily adapts to standardized jig components.



MODEL NO.	A	B	C	M	N	kg
BP35-085085-0100-12	85	100	85	M12	M12	3.64
BP35-085085-0125-12		125				
BP35-085085-0100-16	85	100	85	M16	M16	4.13
BP35-085085-0125-16		125				

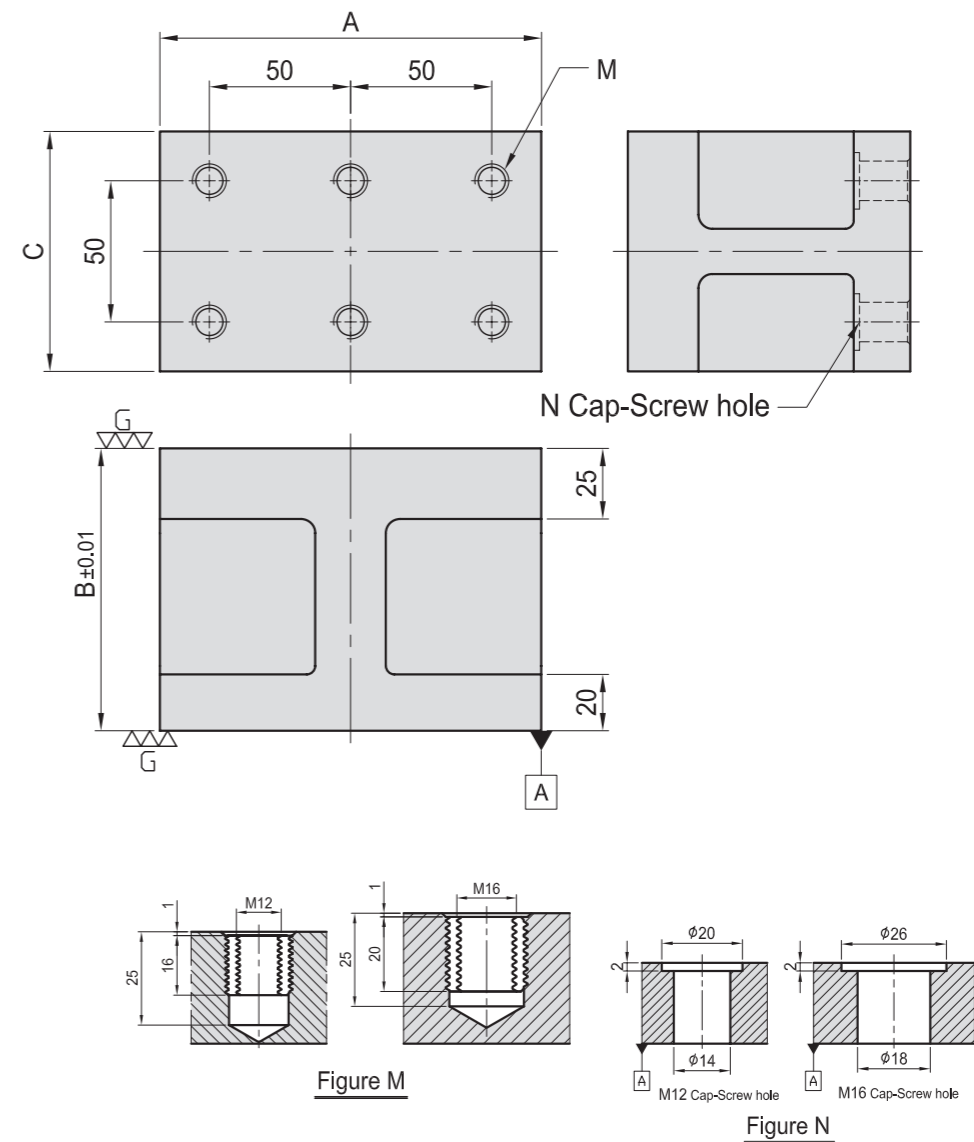
*Special Design Welcome !



BP36

H/CAST SECTION

- Material / Finish:
Material: Cast Iron FC300(JIS) / GG30(DIN)
- Heat treated (Normalized)
- Features: Easily adapts to standardized jig components.



MODEL NO.	A	B	C	M	N	kg
BP36-135085-0100-12	135	100	85	M12	M12	5.76
BP36-135085-0125-12		125				
BP36-135085-0100-16	135	100	85	M16	M16	6.53
BP36-135085-0125-16		125				

*Special Design Welcome !

BP

BPA

BC

CP

SU

PT

SVF

ALV

OK-
VISE

JER-
GENS

OTHER

Column
for
Technical
Data

BP37

H/CAST SECTION

- Material / Finish: Cast Iron FC300(JIS) / GG30(DIN)
- Heat treated (Normalized)
- Features: Easily adapts to standardized jig components.

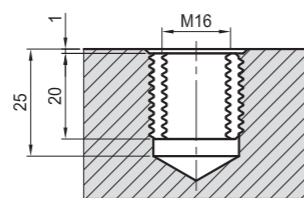
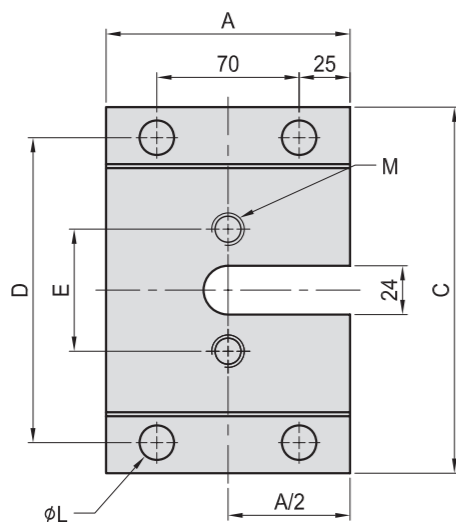
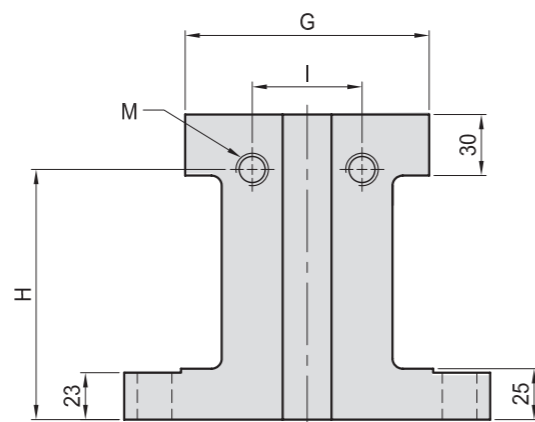
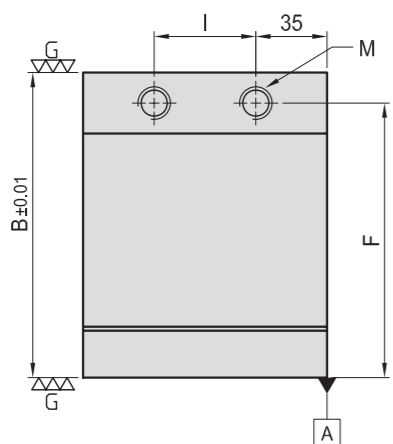


Figure M

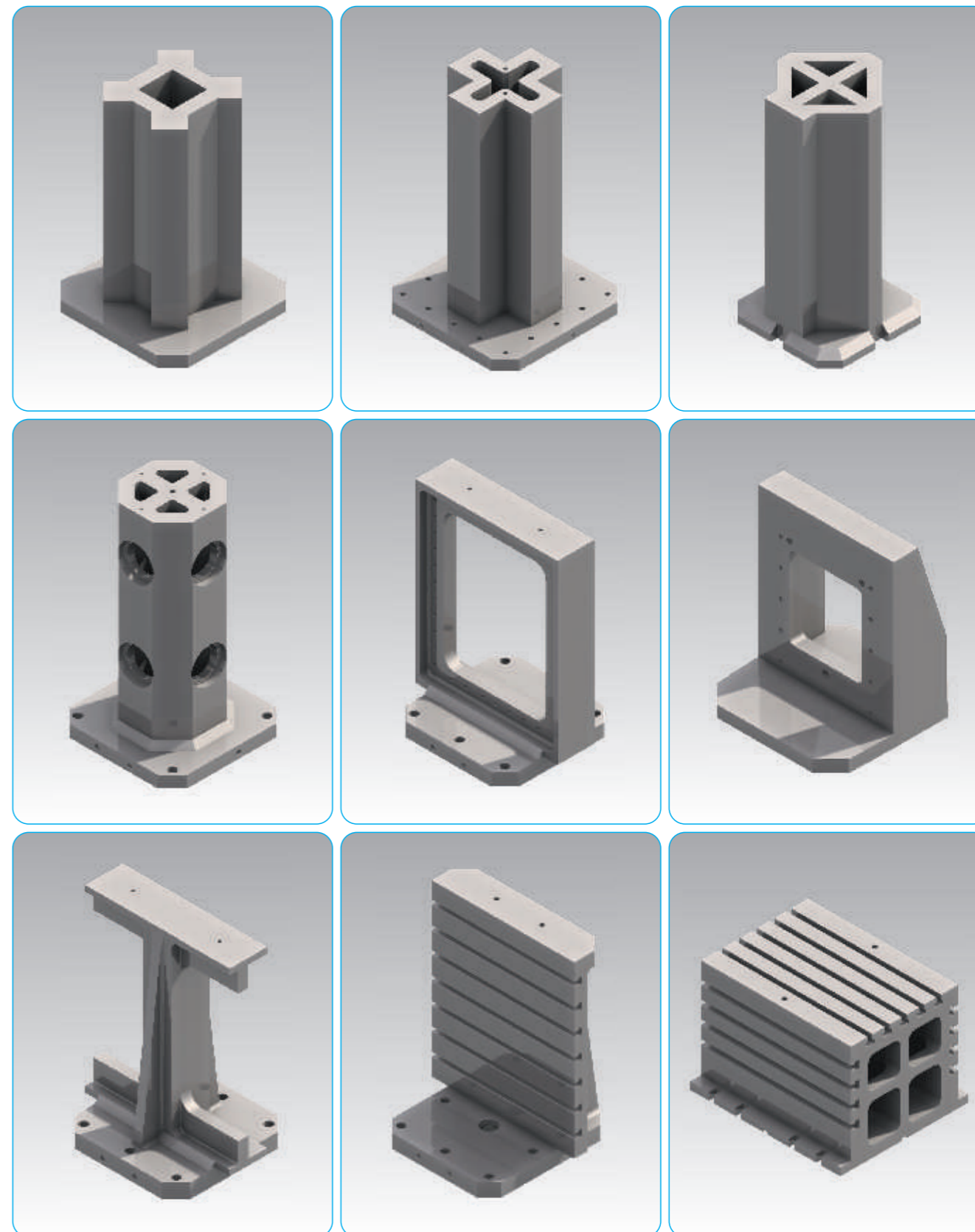


MODEL NO.	A	B	C	D	E	F	G	H	I	M	L	kg
BP37-120180-0150-16	120	150	180	150	60	135	120	123	50	M16	17	15.5

*Special Design Welcome !

BP-SPECIAL

**WE CAN BUILD YOUR OWN SPECIAL DESIGN
UP TO 1500mm x 1500mm x 1500mm**



BP

BPA

BC

CP

SU

PT

SVF

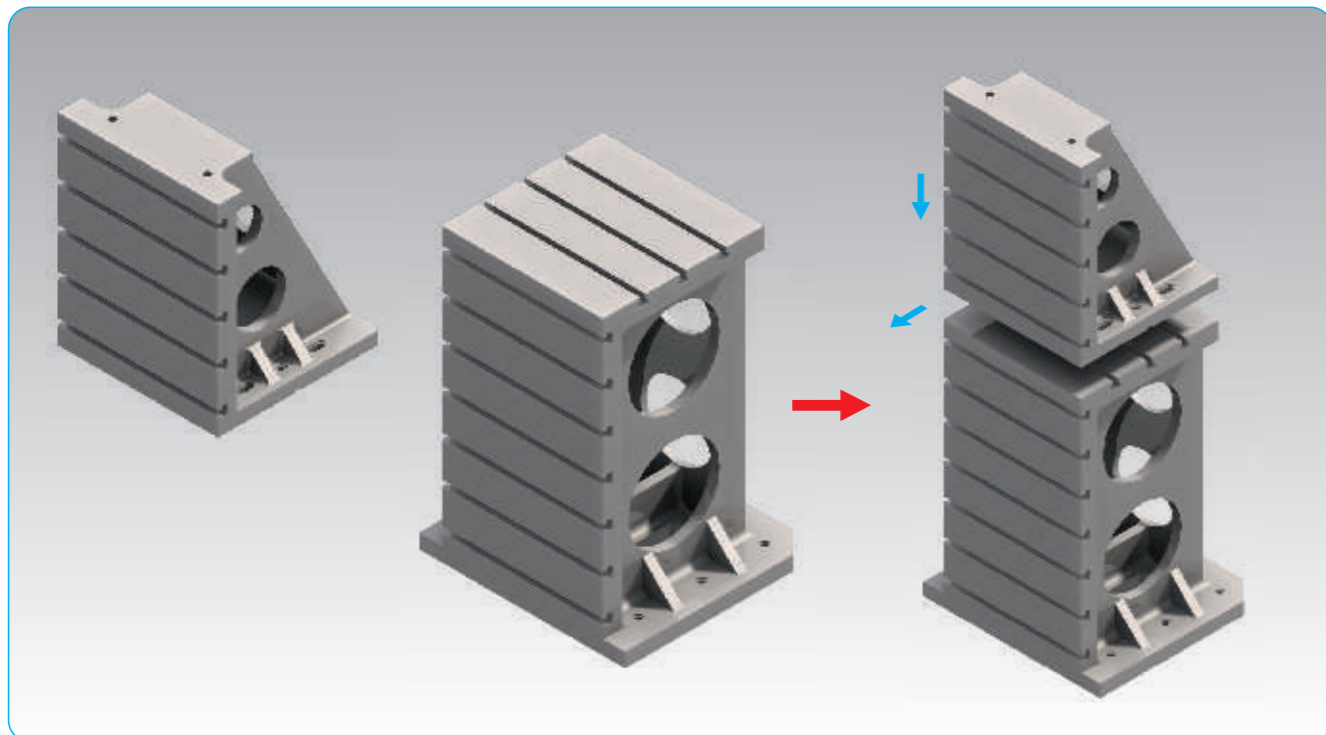
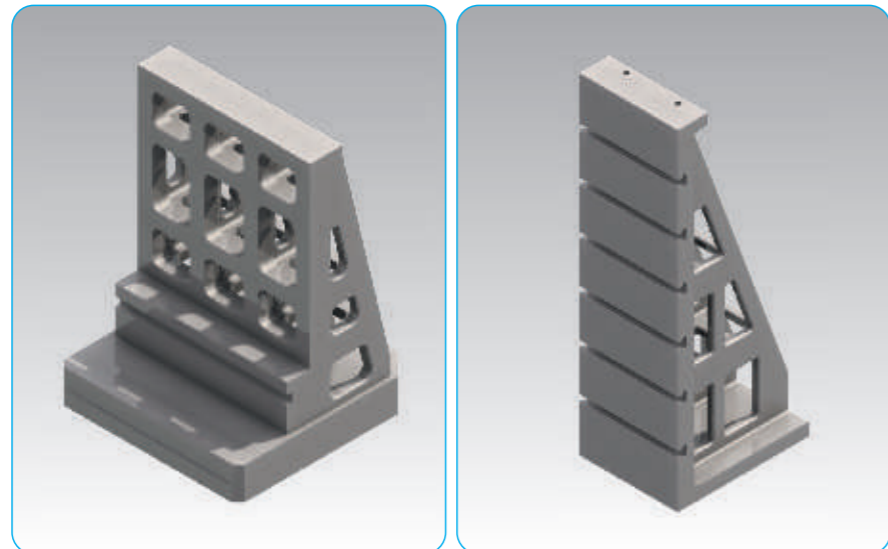
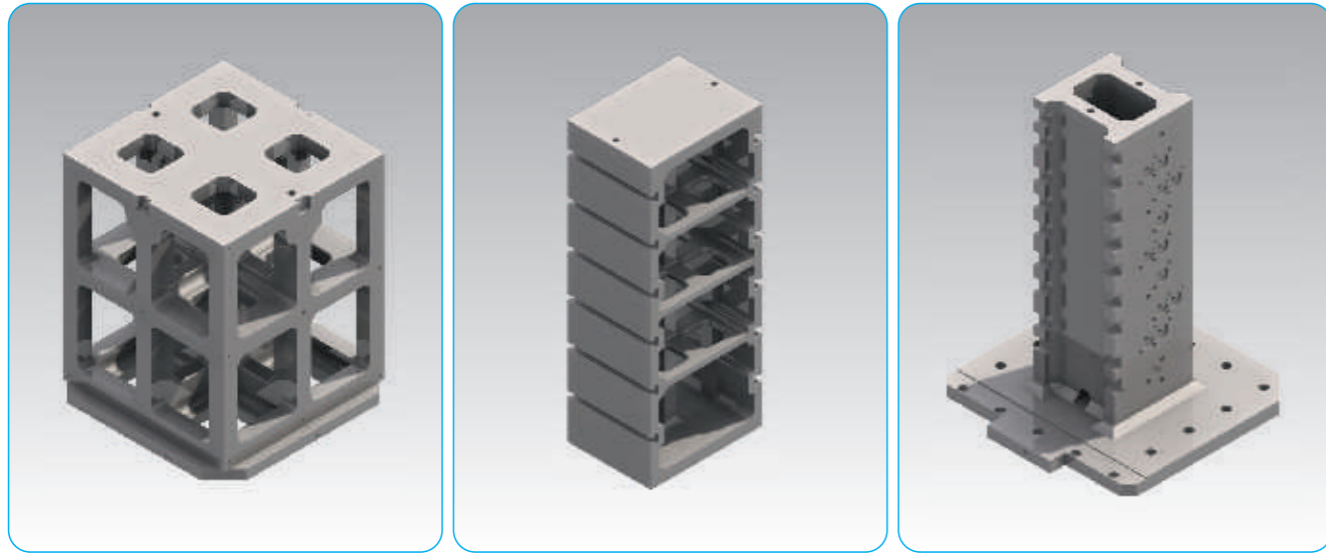
ALV

OK-
VISE

JER-
GENS

OTHER

Column
for
Technical
Data





HIGH STRENGTH ALUMINUM BASE SERIES

BPA07~BPA12



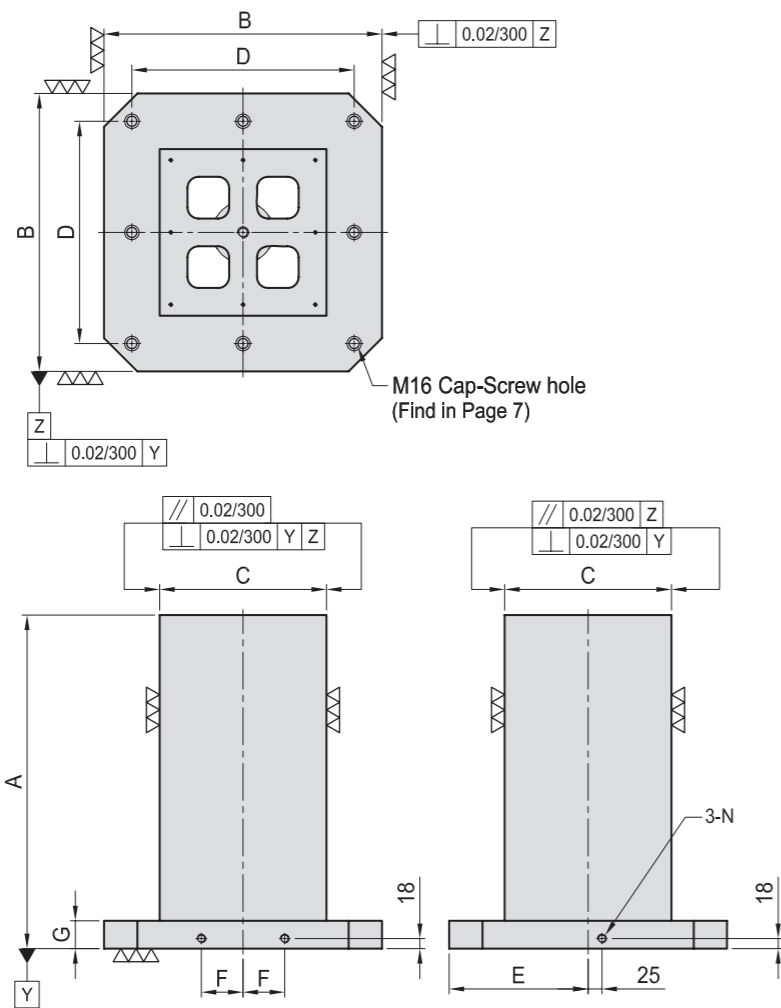
SQUARE TOOLING COLUMN DOUBLE SIDED TOOLING COLUMN



BPA07

SQUARE TOOLING COLUMN

- Material: High Strength Aluminum Casting.
- Application: Horizontal Machining Center.
- Features: Ready to accept a hole pattern for your special jig.
- Eye bolt & Top cover included.



MODEL NO.	A	B	C	D	E	F	G	Mounting holes	kg
BPA07-400400-0500	500	400	250	320	200	55	40	4	56
BPA07-400400-0650	650								73
BPA07-500500-0600	600	500	300	400	250	75	40	8	91
BPA07-500500-0750	750								122
BPA07-630630-0700	700	630	350	500	315	100	50	8	129
BPA07-630630-0850	850								180
BPA07-800800-0800	800	800	500	640	400	135	50	8	215
BPA07-800800-1000	1000								312

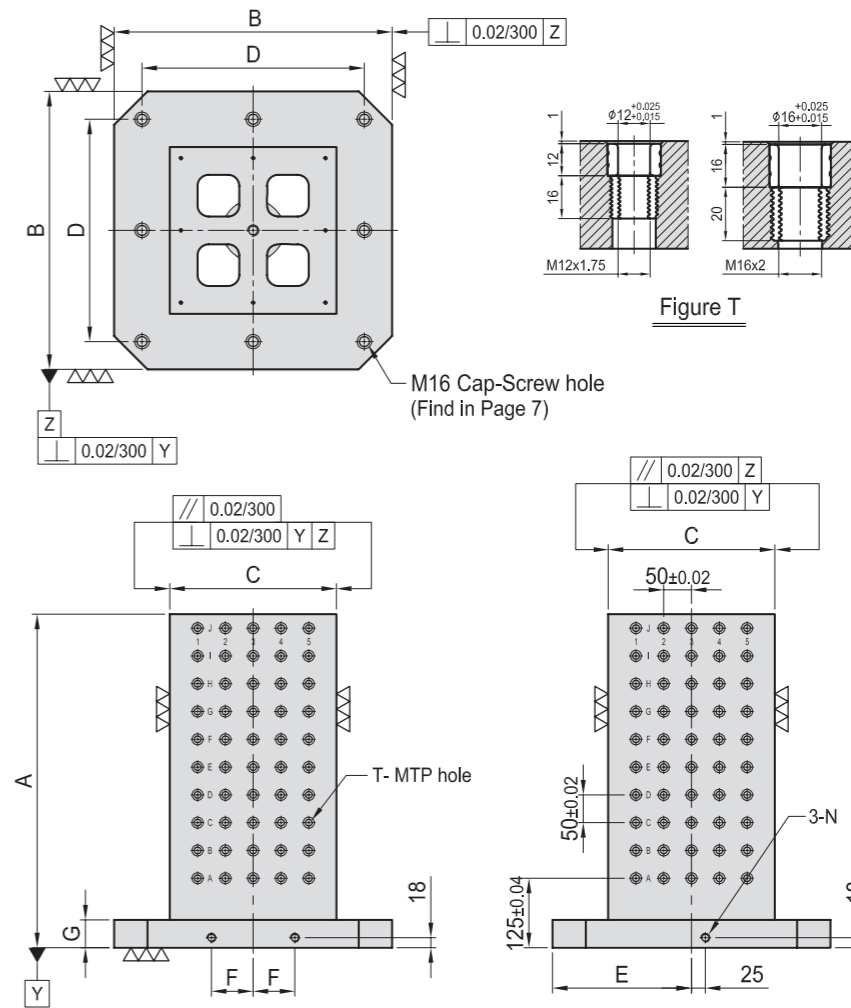
*Special Design Welcome !



BPA08

SQUARE TOOLING COLUMN

- Material: High Strength Aluminum Casting.
- Alignment bushing: SUJ2(JIS) / 100Cr6(DIN), heat treated
- Threaded Insert: S45C(JIS) / CK45(DIN), heat treated
- MTP hole spacing: 50±0.02
- Application: Horizontal Machining Center.
- Features: Alignment bushing & thread insert at every hole location, easily adapts to standardized jig components.
- Eye bolt & Top cover included.



MODEL NO.	A	B	C	D	E	F	G	T	MTP	Mounting holes	kg
BPA08-400400-0500-12	500	400	250	320	200	55	40	φ12	M12	128	54
BPA08-400400-0650-12	650									176	73
BPA08-500500-0600-12	600	500	300	400	250	75	40	φ12	M12	200	88
BPA08-500500-0750-12	750									260	122
BPA08-630630-0700-12	700	630	350	500	315	100	50	φ12	M12	288	126
BPA08-630630-0850-12	850									360	180
BPA08-800800-0800-12	800	800	500	640	400	135	50	φ12	M12	504	204
BPA08-800800-1000-12	1000									648	312
BPA08-400400-0500-16	500	400	250	320	200	55	40	φ16	M16	128	54
BPA08-400400-0650-16	650									176	73
BPA08-500500-0600-16	600	500	300	400	250	75	40	φ16	M16	200	88
BPA08-500500-0750-16	750									260	122
BPA08-630630-0700-16	700	630	350	500	315	100	50	φ16	M16	288	123
BPA08-630630-0850-16	850									360	180
BPA08-800800-0800-16	800	800	500	640	400	135	50	φ16	M16	504	201
BPA08-800800-1000-16	1000									648	312

*Special Design Welcome !

BP

BPA

BC

CP

SU

PT

SVF

ALV

OK-VISE

JER-GENS

OTHER

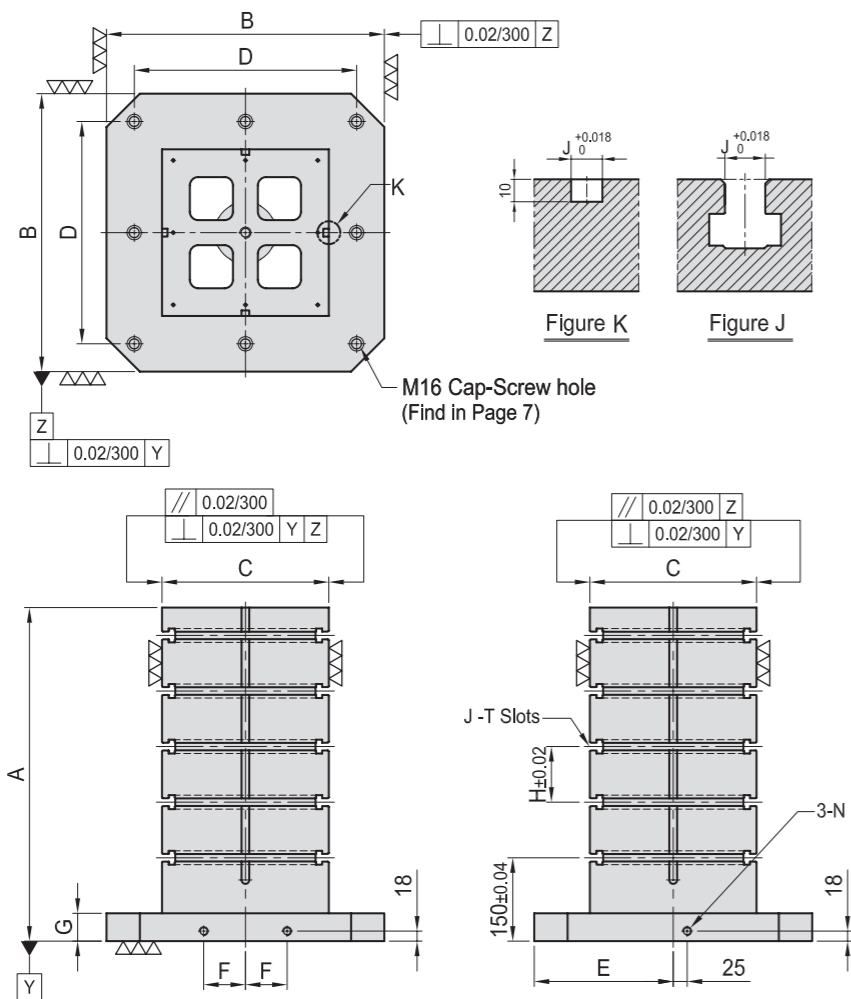
Column for Technical Data



BPA09

SQUARE TOOLING COLUMN

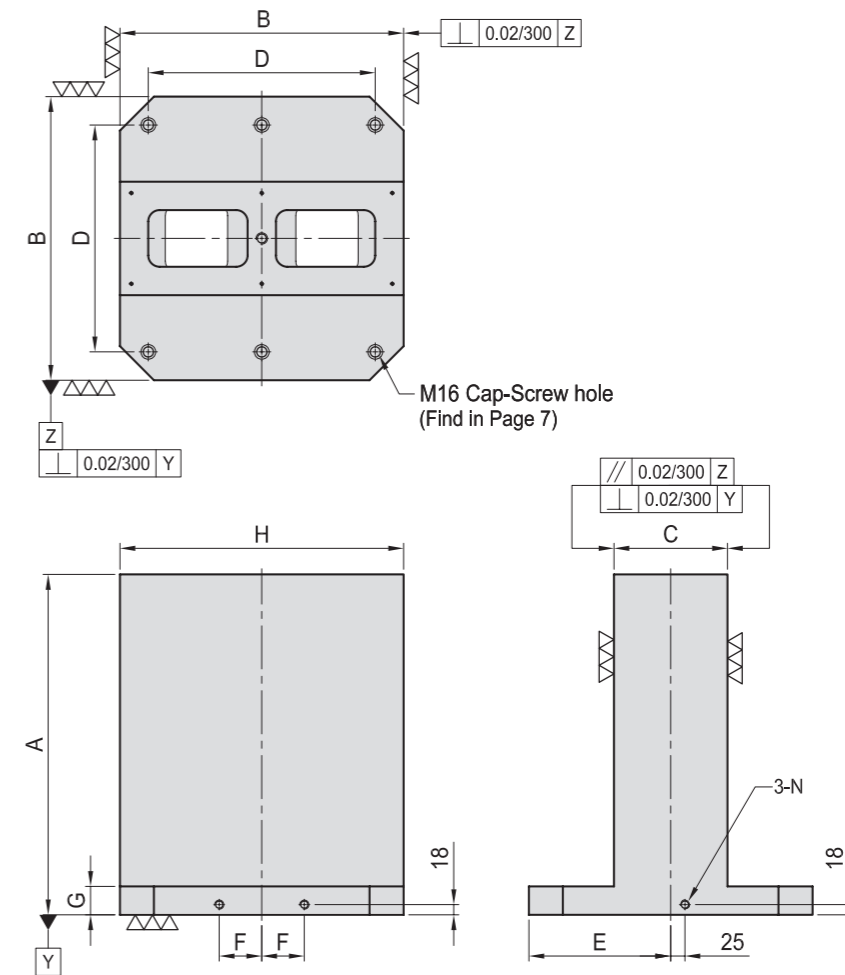
- Material: High Strength Aluminum Casting.
- Application: Horizontal Machining Center.
- Features: T-Slots running horizontally, key-way running vertically, easily adapts to standardized jig components.
- Eye bolt & Top cover included.



BPA10

DOUBLE SIDED TOOLING COLUMN

- Material: High Strength Aluminum Casting.
- Application: Horizontal Machining Center.
- Features: Ready to accept a hole pattern for your special jig.
- Eye bolt & Top cover included.



MODEL NO.	A	B	C	D	E	F	G	H	J	Mounting holes	kg
BPA09-400400-0500-14	500									4	61
BPA09-400400-0650-14	650	400	250	320	200	55	40	100	14	4	84
BPA09-500500-0600-14	600									8	86
BPA09-500500-0750-14	750	500	300	400	250	75	40	100	14	8	127
BPA09-630630-0700-14	700									8	136
BPA09-630630-0850-14	850	630	350	500	315	100	50	125	14	8	183
BPA09-800800-0800-14	800									8	260
BPA09-800800-1000-14	1000	800	500	640	400	135	50	150	14	8	319

*Special Design Welcome !

MODEL NO.	A	B	C	D	E	F	G	H	J	Mounting holes	kg
BPA09-400400-0500-18	500									4	60
BPA09-400400-0650-18	650	400	250	320	200	55	40	100	18	4	84
BPA09-500500-0600-18	600									8	85
BPA09-500500-0750-18	750	500	300	400	250	75	40	100	18	8	135
BPA09-630630-0700-18	700									8	135
BPA09-630630-0850-18	850	630	350	500	315	100	50	125	18	8	183
BPA09-800800-0800-18	800									8	254
BPA09-800800-1000-18	1000	800	500	640	400	135	50	150	18	8	319

*Special Design Welcome !

MODEL NO.	A	B	C	D	E	F	G	H	Mounting holes	kg	
BPA10-400400-0500	500									4	62
BPA10-400400-0650	650	400	150	320	200	55	40	400	4	86	
BPA10-500500-0600	600									6	96
BPA10-500500-0750	750	500	200	400	250	75	40	500	6	135	
BPA10-630630-0700	700									6	176
BPA10-630630-0850	850	630	250	500	315	100	50	630	6	202	
BPA10-800800-0800	800									6	217
BPA10-800800-1000	1000	800	300	640	400	135	50	800	6	318	

BP

BPA

BC

CP

SU

PT

SVF

ALV

OK-
VISE

JER-
GENS

OTHER

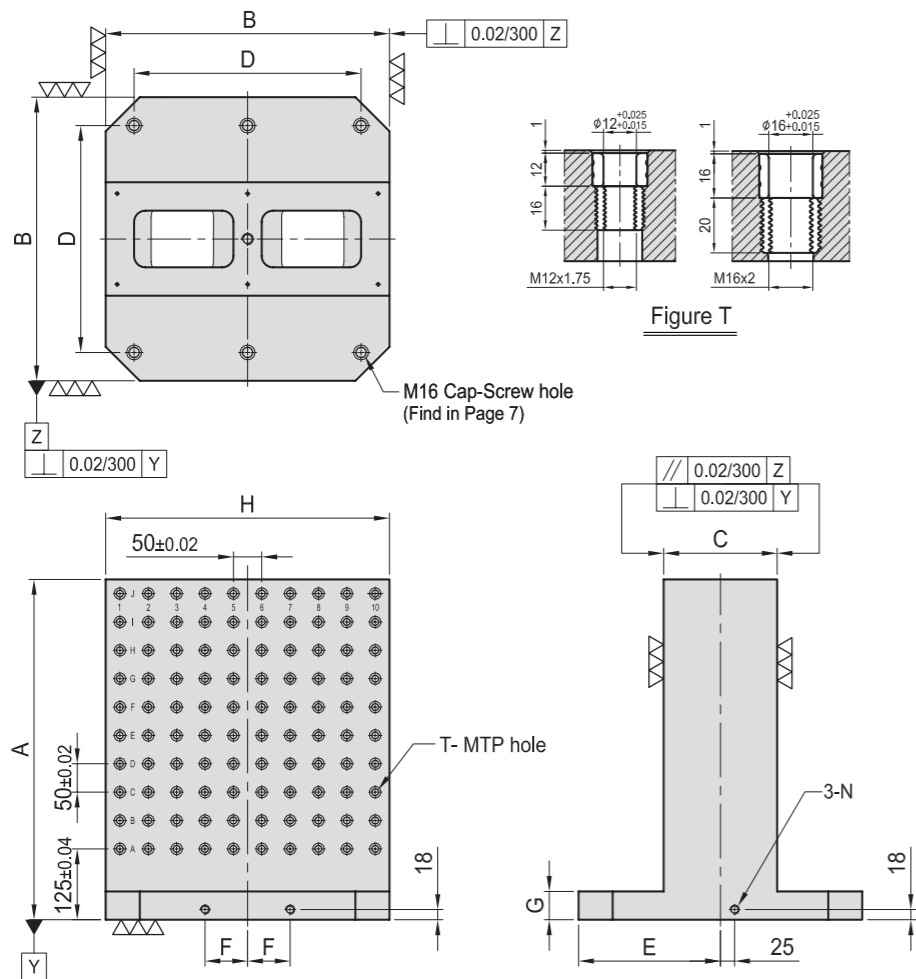
Column
for
Technical
Data



BPA11

DOUBLE SIDED TOOLING COLUMN

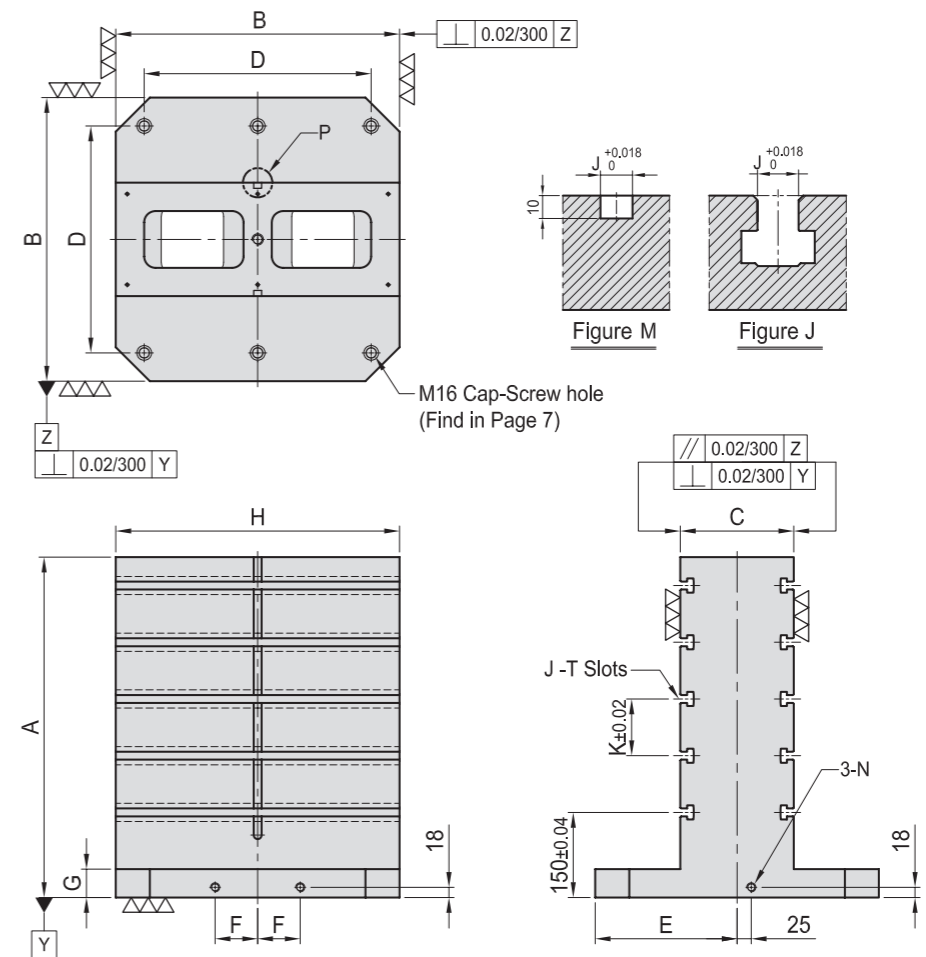
- Material: High Strength Aluminum Casting.
- Alignment Bushing: SUJ2(JIS) / 100Cr6 (DIN), heat treated
Threaded Insert: S45C(JIS) / CK45(DIN), heat treated
MTP hole spacing: 50 ± 0.02
- Application: Horizontal Machining Center.
- Features: Alignment bushing & thread insert at every hole location, easily adapts to standardized jig components.
- Eye bolt & Top cover included.



BPA12

DOUBLE SIDED TOOLING COLUMN

- Material: High Strength Aluminum Casting.
- Application: Horizontal Machining Center.
- Features: T-Slots running horizontally, key-way running vertically, easily adapts to standardized jig components.
- Eye bolt & Top cover included.



MODEL NO.	A	B	C	D	E	F	G	H	T	MTP	Mounting holes	kg
BPA11-400400-0500-12	500									128	4	56
BPA11-400400-0650-12	650	400	150	320	200	55	40	400	φ12	M12	176	86
BPA11-500500-0600-12	600									200	6	91
BPA11-500500-0750-12	750	500	200	400	250	75	40	500	φ12	M12	260	135
BPA11-630630-0700-12	700									288	6	154
BPA11-630630-0850-12	850	630	250	500	315	100	50	630	φ12	M12	360	202
BPA11-800800-0800-12	800									420	6	214
BPA11-800800-1000-12	1000	800	300	640	400	135	50	800	φ12	M12	540	318

MODEL NO.	A	B	C	D	E	F	G	H	T	MTP	Mounting holes	kg
BPA11-400400-0500-16	500									128	4	60
BPA11-400400-0650-16	650	400	150	320	200	55	40	400	φ16	M16	176	86
BPA11-500500-0600-16	600									200	6	103
BPA11-500500-0750-16	750	500	200	400	250	75	40	500	φ16	M16	260	135
BPA11-630630-0700-16	700									288	6	170
BPA11-630630-0850-16	850	630	250	500	315	100	50	630	φ16	M16	360	202
BPA11-800800-0800-16	800									420	6	210
BPA11-800800-1000-16	1000	800	300	640	400	135	50	800	φ16	M16	540	318

*Special Design Welcome !

MODEL NO.	A	B	C	D	E	F	G	H	J	K	Mounting holes	kg
BPA12-400400-0500-14	500										4	60
BPA12-400400-0650-14	650	400	150	320	200	55	40	400	14	100	4	92
BPA12-500500-0600-14	600										6	87
BPA12-500500-0750-14	750	500	200	400	250	75	40	500	14	100	6	142
BPA12-630630-0700-14	700										6	165
BPA12-630630-0850-14	850	630	250	500	315	100	50	630	14	125	6	212
BPA12-800800-0800-14	800										6	243
BPA12-800800-1000-14	1000	800	300	640	400	135	50	800	14	150	6	325

*Special Design Welcome !

MODEL NO.	A	B	C	D	E	F	G	H	J	K	Mounting holes	kg
BPA12-400400-0500-18	500										4	60
BPA12-400400-0650-18	650	400	150	320	200	55	40	400	18	100	4	92
BPA12-500500-0600-18	600										6	86
BPA12-500500-0750-18	750	500	200	400	250	75	40	500	18	100	6	142
BPA12-630630-0700-18	700										6	163
BPA12-630630-0850-18	850	630	250	500	315	100	50	630	18	125	6	212
BPA12-800800-0800-18	800										6	240
BPA12-800800-1000-18	1000	800	300	640	400	135	50	800	18	150	6	325



A series of horizontal blue lines spanning the width of the page, providing a ruled area for writing or drawing.