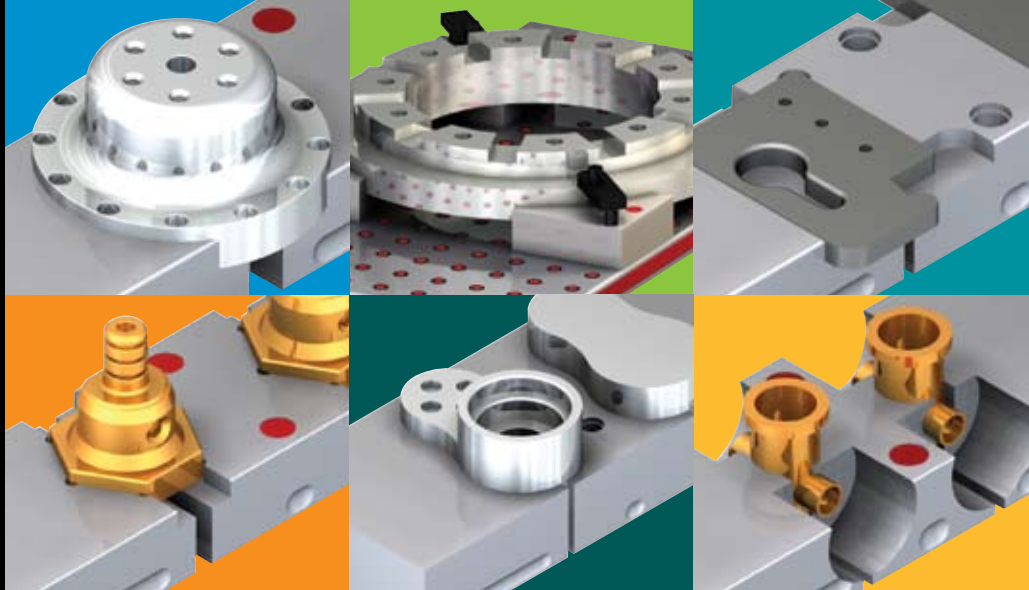




SAMPLE SOLUTIONS

Simply Flexible.



EFFICIENCY THROUGH WORKHOLDING INNOVATION

Chick works to increase productivity by reducing inefficiencies of CNC Machining Centers. We do this simply by applying workholding solutions.

We work with hard-working, successful companies that want to solve machining challenges, improve their operations, and make more money.

Chick can work with you to:

- Reduce set up times
- Minimize part change time
- Increase cut time
- Gain efficiency with repetitive machine operations
- Gain WalkAway time for reduced labor costs
- Minimize no operator available wasted time

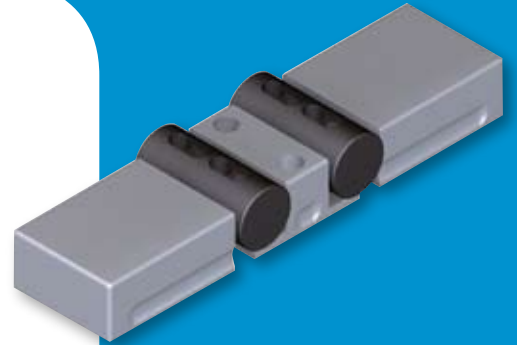
Our QwikChange Accessories offer a flexible, affordable solution. If you would like to see additional sample solutions or have a part holding challenge, please contact our Customer Care Team at 800-332-4425 or visit us on the web at www.ChickWorkholding.com.

CYLINDRICAL PARTS

Qwik-Lok

Multi-Lok

Indexer Subsystem



Description:

Standard Dual Station Machinable Jaws holding two parts.

Qwik-Lok

Multi-Lok

Indexer Subsystem



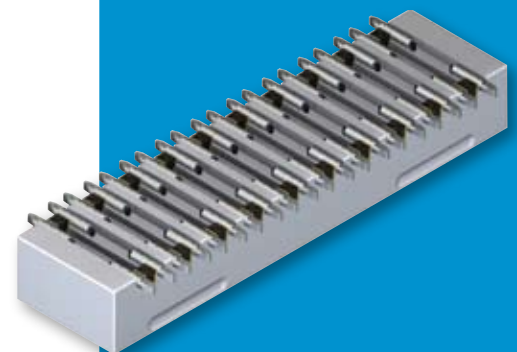
Description:

Standard Single Station Machinable Jaws cylindrically contoured to part.

Qwik-Lok

Multi-Lok

Indexer Subsystem



Description:

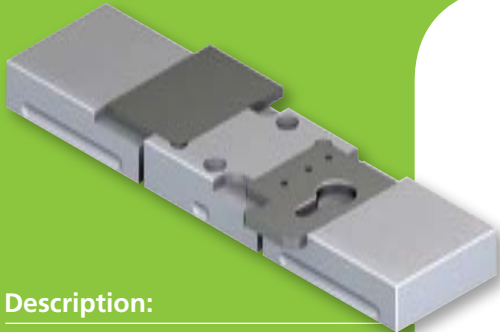
High Machinable Faceplate holding multiple small parts.

RECTANGULAR PARTS

Qwik-Lok

Multi-Lok

Indexer Subsystem



Description:

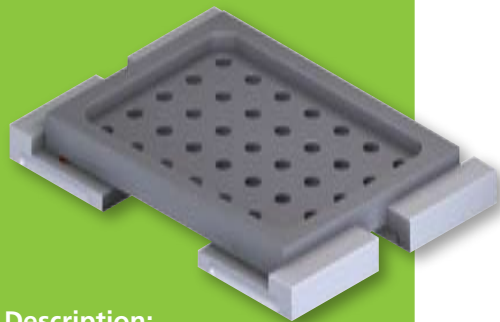
Standard Dual Station Machinable Jaws with machined location features.



Qwik-Lok

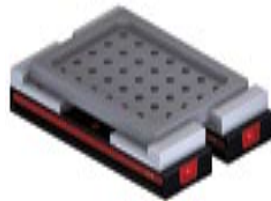
Multi-Lok

Indexer Subsystem



Description:

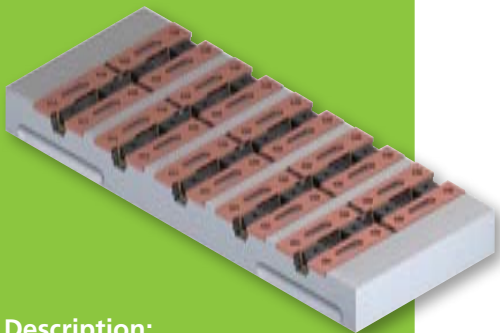
Standard Single Station Jaws for large parts.



Qwik-Lok

Multi-Lok

Indexer Subsystem



Description:

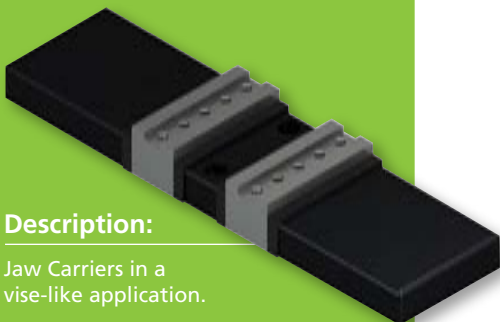
Wide Machinable Faceplate holding twenty rectangular parts.



Qwik-Lok

Multi-Lok

Indexer Subsystem



Description:

Jaw Carriers in a vise-like application.



HEXAGONAL PARTS

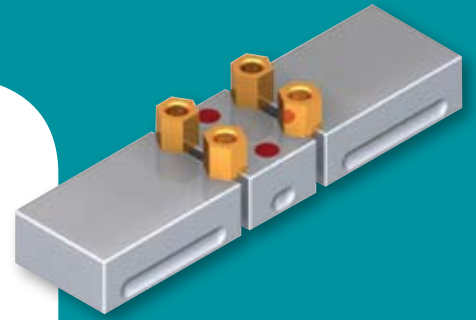
Qwik-Lok



Multi-Lok



Indexer Subsystem



Description:

Standard Dual Station Machinable Jaws clamping four parts.

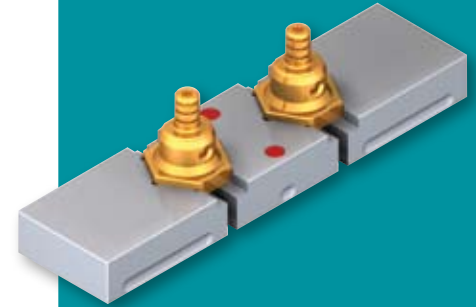
Qwik-Lok



Multi-Lok



Indexer Subsystem



Description:

Standard Dual Station Machinable Jaws contoured to part shape.

CASTING PARTS

Qwik-Lok



Multi-Lok



Indexer Subsystem



Description:

Standard Dual Station Machinable Jaws with fixed jaw location points.

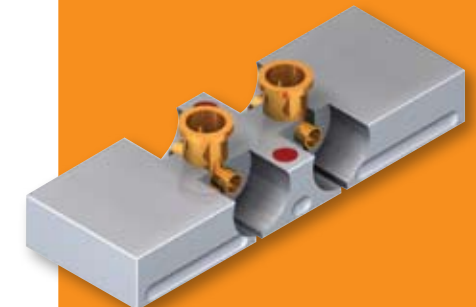
Qwik-Lok



Multi-Lok



Indexer Subsystem



Description:

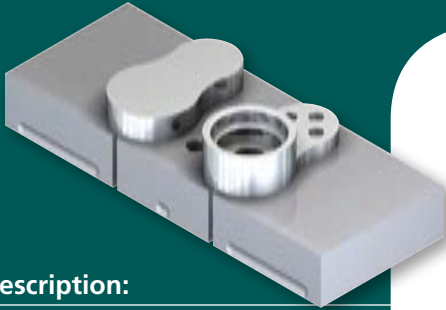
High Dual Station Machinable Jaws cut for part accessibility and chip removal.

IRREGULAR PARTS

Qwik-Lok

Multi-Lok

Indexer Subsystem



Description:

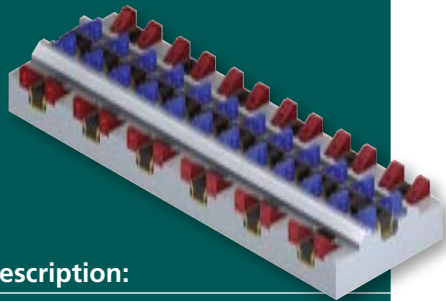
Oversized Dual Station Machinable Jaws contoured to part shape.



Qwik-Lok

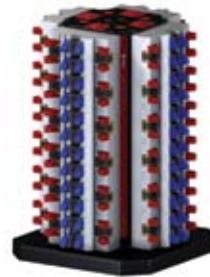
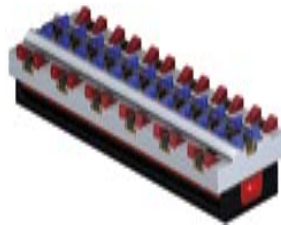
Multi-Lok

Indexer Subsystem



Description:

Wide Machinable Faceplate holding difficult to clamp parts.

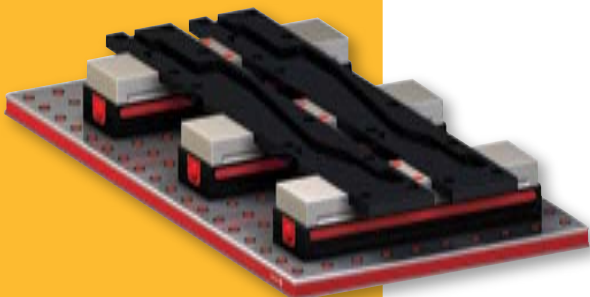


FOUNDATION SOLUTIONS



Description:

Foundation Blox mounted to a Foundation.

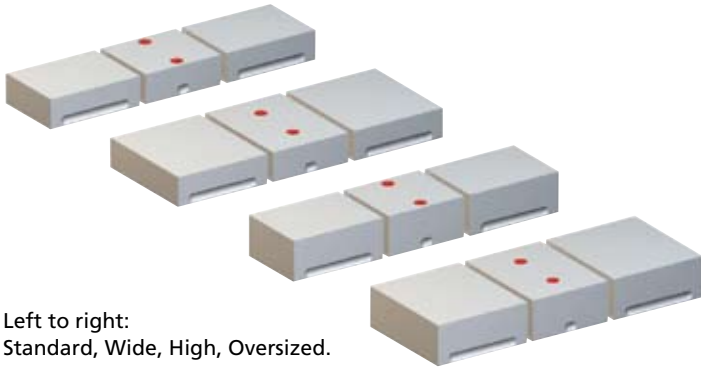


Description:

Multiple Qwik-Loks mounted to a Foundation holding large parts.

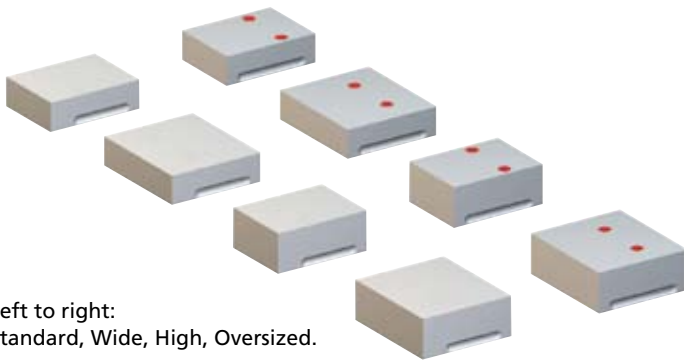
QWIKCHANGE™ ACCESSORIES

Dual Station Jaws



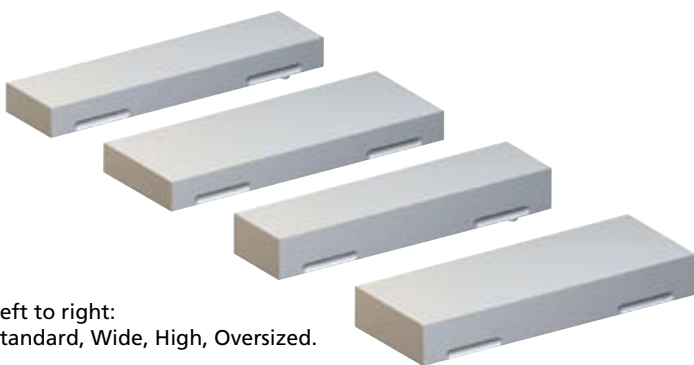
Left to right:
Standard, Wide, High, Oversized.

Single Station Jaws



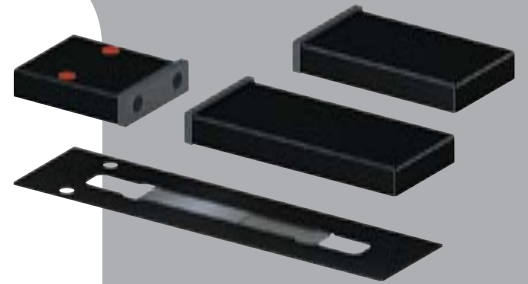
Left to right:
Standard, Wide, High, Oversized.

Machinable Faceplates



Left to right:
Standard, Wide, High, Oversized.

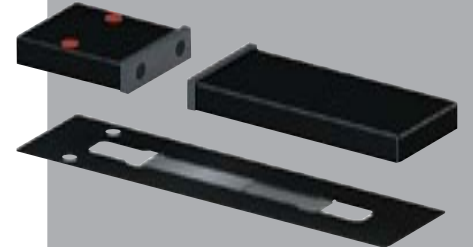
Jaw Carriers



Single Station Deluxe Set



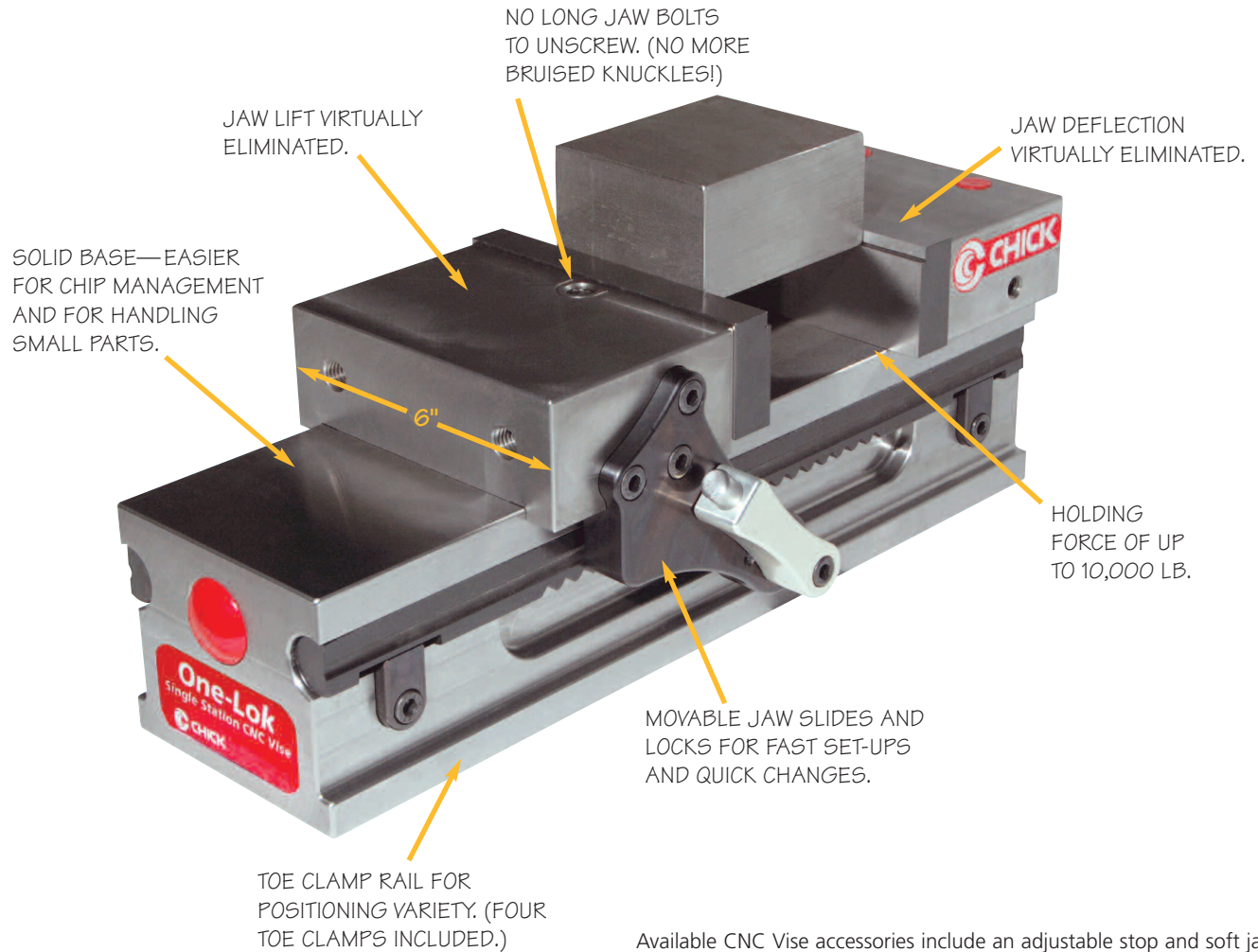
Dual Station Set



Single Station Set

You've got to CNC this!

The new One-Lok Single Station CNC Vise from Chick.



Available CNC Vise accessories include an adjustable stop and soft jaws.

CNC the
better way
with a One-Lok
Single Station CNC Vise

The first of its kind, the One-Lok was designed and built from the ground up for use in CNC milling—to offer dramatic improvements in speed, precision, and versatility. As a single station CNC Vise it is ideally suited for job shops, tool & die shops, prototype work, or other small batch (1-20) CNC milling applications.

The One-Lok Single Station CNC Vise is now in production for delivery in November 2008.



500 Keystone Drive
Warrendale, PA 15086
Phone: 724-772-1644
1-800-332-4425
Fax: 724-772-1633
www.ChickWorkholding.com

