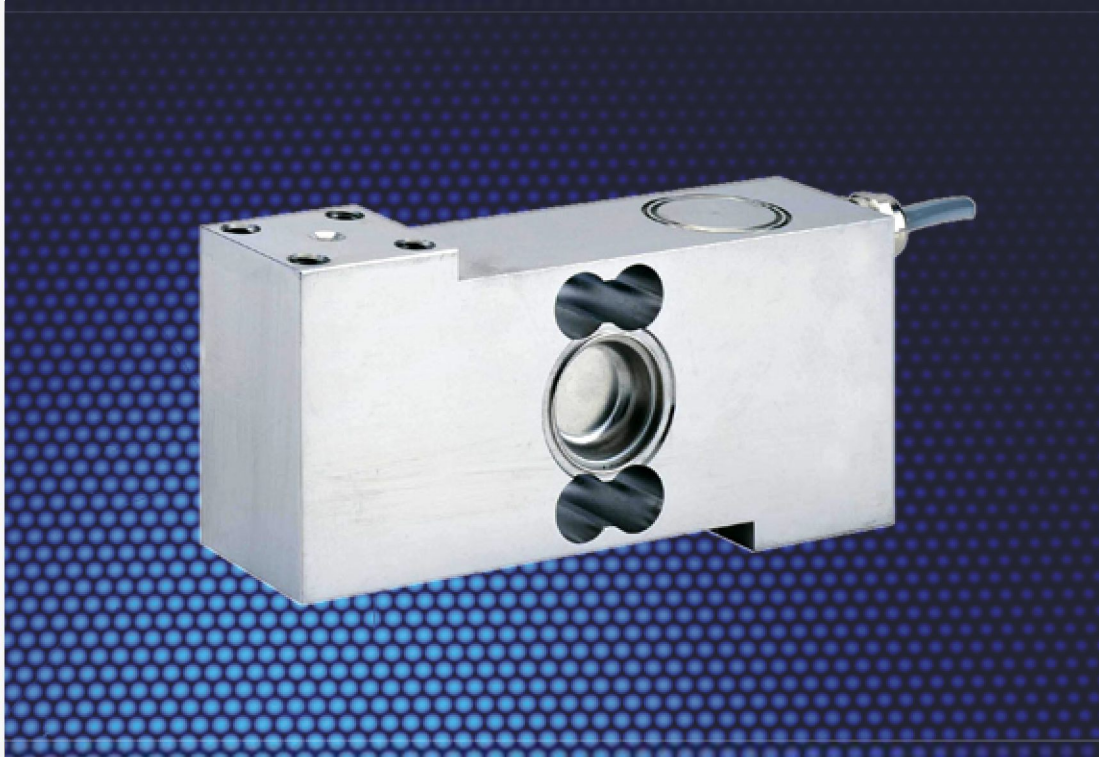


# 1510

Platform Load Cell

**SENSOR**  
TECHNIQUES LIMITED

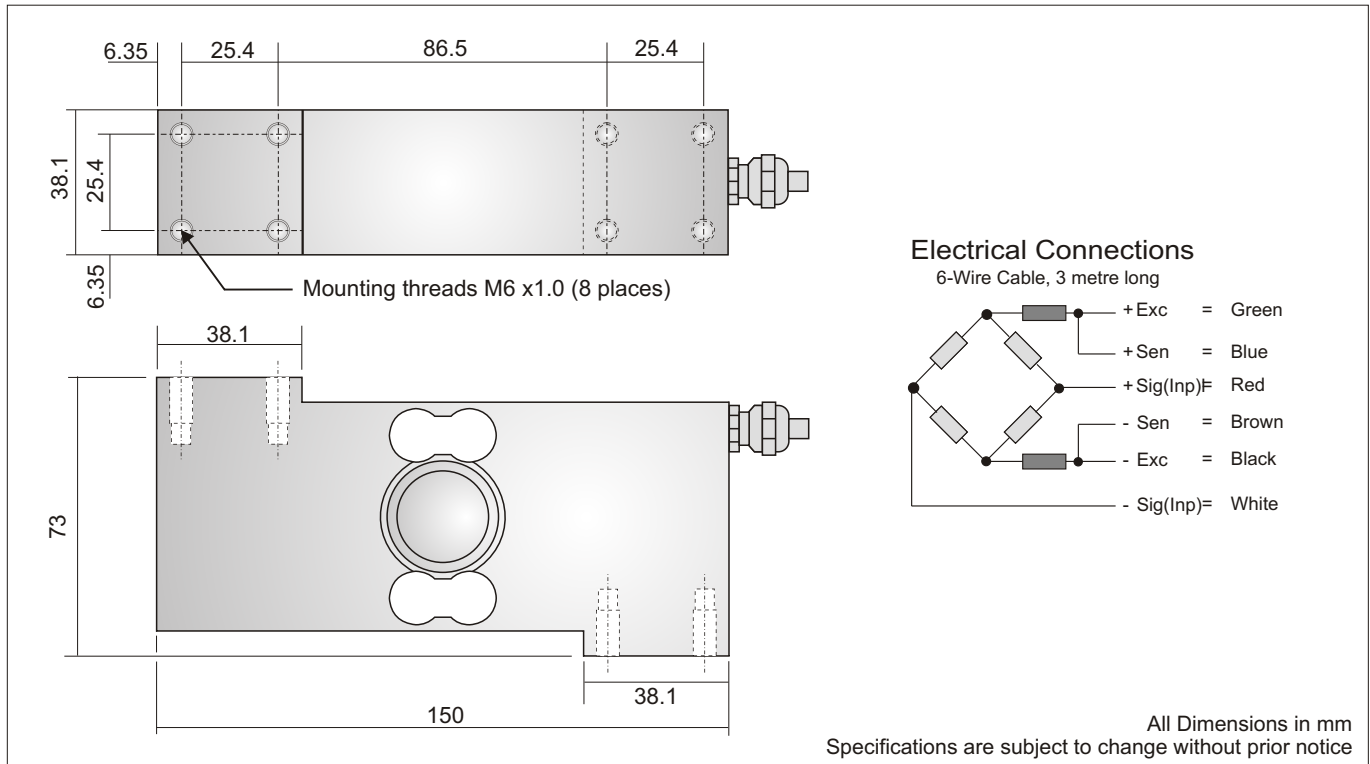


## Platform Load Cell, Model 1510

- Approved to OIML R60 4000 D
- Maximum platform size 600 x 600 mm
- Available in capacities 100kg, 250kg and 500kg
- Robust stainless steel construction
- Hermetically sealed to IP68
- Ideal for platform & floor scales in harsh environments
- Triple beam system with a high natural frequency
- 6-wire sense technique with double shielded cable
- Optional Hazardous area approval (ATEX) available

| GRADE                          |                | E             | G     | C3    | C4    |
|--------------------------------|----------------|---------------|-------|-------|-------|
| Number of Load Cell Intervals  | n (max)        |               |       | 3000  | 4000  |
| Minimum Utilisation            | % Rated Cap.   |               |       | 30    | 33    |
| Minimum Verification Interval  | Vmin=Emax/.    |               |       | 10000 | 12000 |
| Total Error                    | % Appl. Load   | 0.030         | 0.020 | 0.020 | 0.015 |
| Zero Return after 30 mins      | % Appl. Load   | 0.050         | 0.017 | 0.017 | 0.013 |
| Temperature Effect on : Span   | %Appl. Ld./10K | 0.030         | 0.010 | 0.010 | 0.008 |
| Zero                           | %ORL/10K       | 0.100         | 0.040 | 0.014 | 0.011 |
| Output at Rated Load (ORL)     | mV/V           | 2             |       |       |       |
| Output at Rated Load Tolerance | %              | ± 10          |       |       |       |
| Input Impedance                | Ohm            | 380 ± 10      |       |       |       |
| Output Impedance               | Ohm            | 350 ± 3       |       |       |       |
| Recommended Supply Voltage     | V              | 10            |       |       |       |
| Compensated Temp. Range        | °C             | -10 to +40    |       |       |       |
| Operating Temperature Range    | °C             | -20 to +80    |       |       |       |
| Deflection                     | mm             | < 0.4         |       |       |       |
| Safe Overload                  | % Rated Cap.   | 150           |       |       |       |
| Maximum Overload               | % Rated Cap.   | 175           |       |       |       |
| Ultimate Overload              | % Rated Cap.   | 200           |       |       |       |
| Cable Length                   | m              | 3             |       |       |       |
| Typical Platform Size          | mm             | 600 x 600     |       |       |       |
| Environmental Protection       |                | IP68          |       |       |       |
| Rated Capacities (Emax)        | Kg             | 100, 250, 500 |       |       |       |

Dimensions



All Dimensions in mm  
Specifications are subject to change without prior notice

DS1510-3,10/07