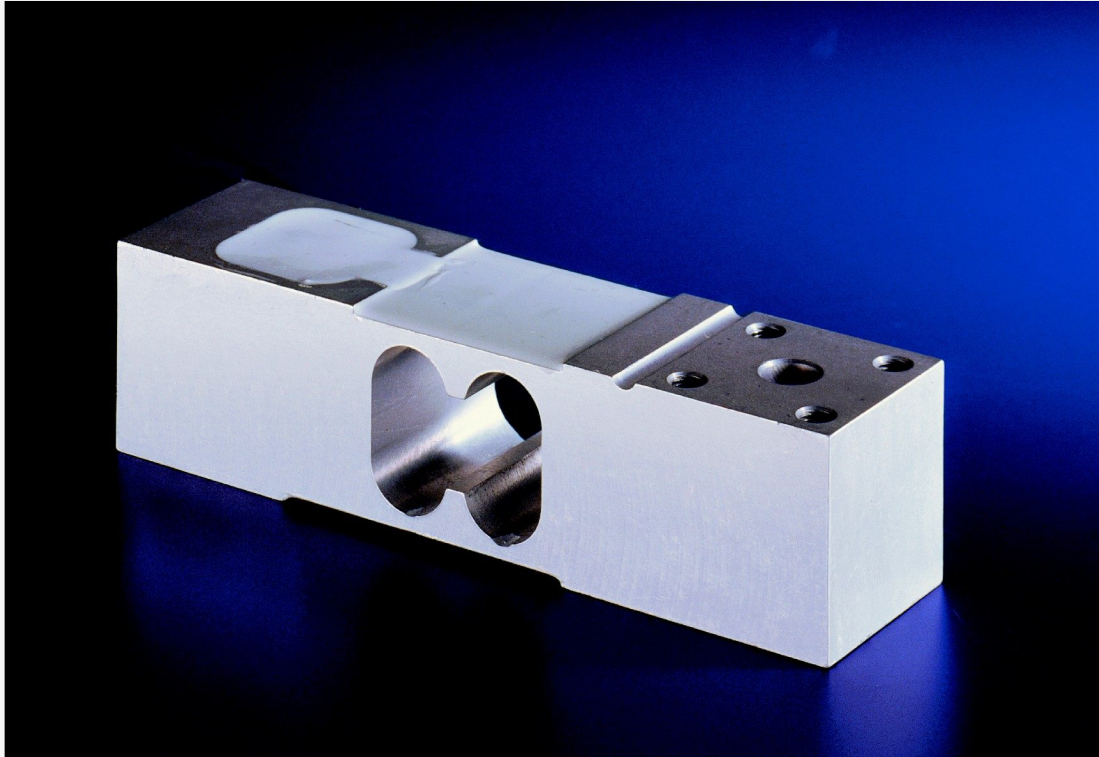


# 1242

Platform Load Cell

**SENSOR**  
TECHNIQUES LIMITED



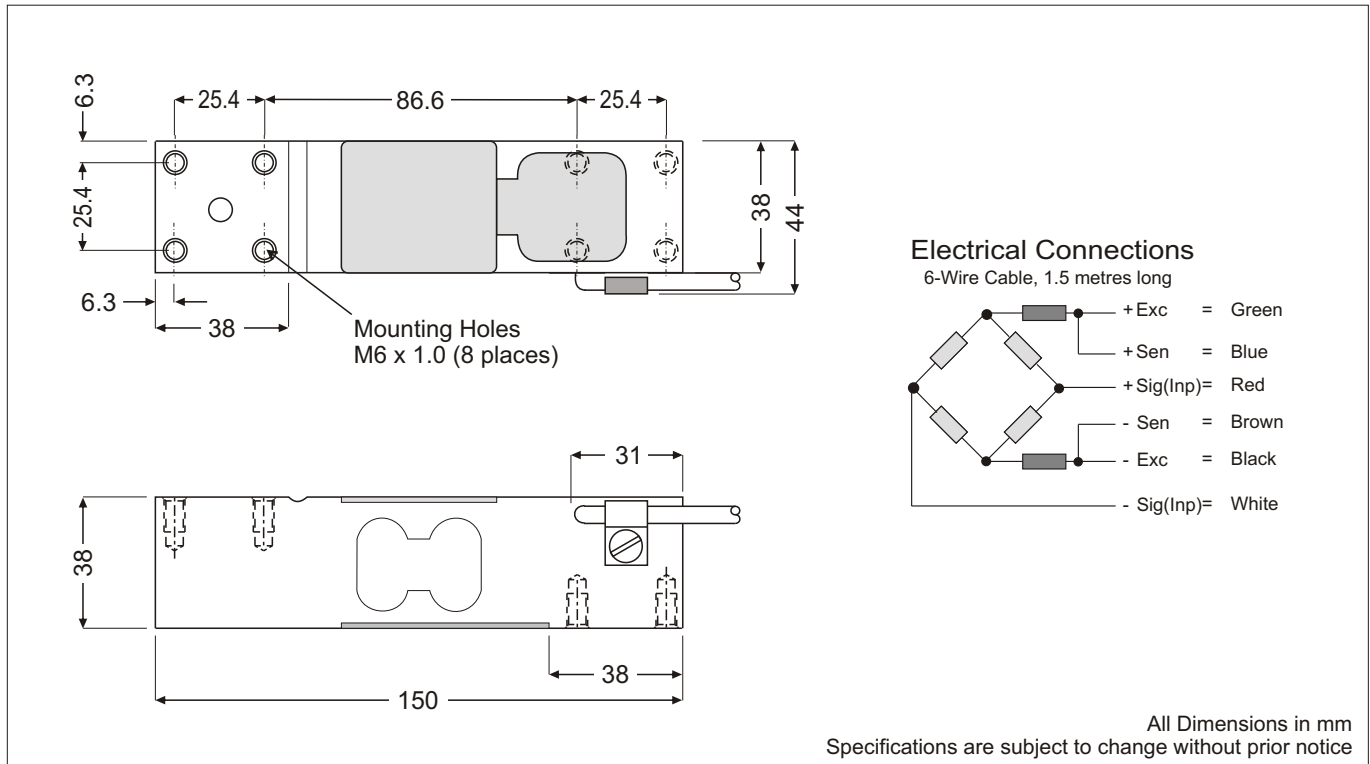
## Platform Load Cell, Model 1242

- Approved to OIML R60 6000 D
- Maximum platform size 400 x 400 mm
- Available in capacity ranges from 50kg to 250kg
- Ideal for platform, tank and personal weighing scales
- Compact robust aluminium construction
- Dual system with a high natural frequency
- Sealed to IP66
- 6 wire cable with Sense and Drain connections
- Optional Hazardous area approval (ATEX) available

GRADE		E	C3	C6
Number of Load Cell Intervals	n (max)		3000	6000
Minimum Utilisation	% Rated Cap.		50	60
Minimum Verification Interval	Vmin=Emax/.		6000	10000
Total Error	% Appl. Load	0.050	0.020	0.010
Zero Return after 30 mins	% Appl. Load	0.050	0.017	0.0083
Temperature Effect on : Span	%Appl. Ld./10K	0.030	0.010	0.0058
Zero	%ORL/10K	0.100	0.023	0.024
Output at Rated Load (ORL)	mV/V		2	
Output at Rated Load Tolerance	%		± 10	
Input Impedance	Ohm		415 ± 15	
Output Impedance	Ohm		350 ± 3	
Recommended Supply Voltage	V		10	
Compensated Temp. Range	°C		-10 to +40	
Operating Temperature Range	°C		-20 to +70	
Deflection	mm		< 0.4	
Safe Overload	% Rated Cap.		150	
Maximum Overload	% Rated Cap.		200	
Ultimate Overload	% Rated Cap.		300	
Cable Length	m		1.5	
Typical Platform Size	mm		400 x 400	
Environmental Protection			IP66	
Rated Capacities (Emax)	Kg		50, 100, 150, 200, 250	

NMI - Certificate TC 5506, OIML-R60

Dimensions



DS1242-4, 10/07