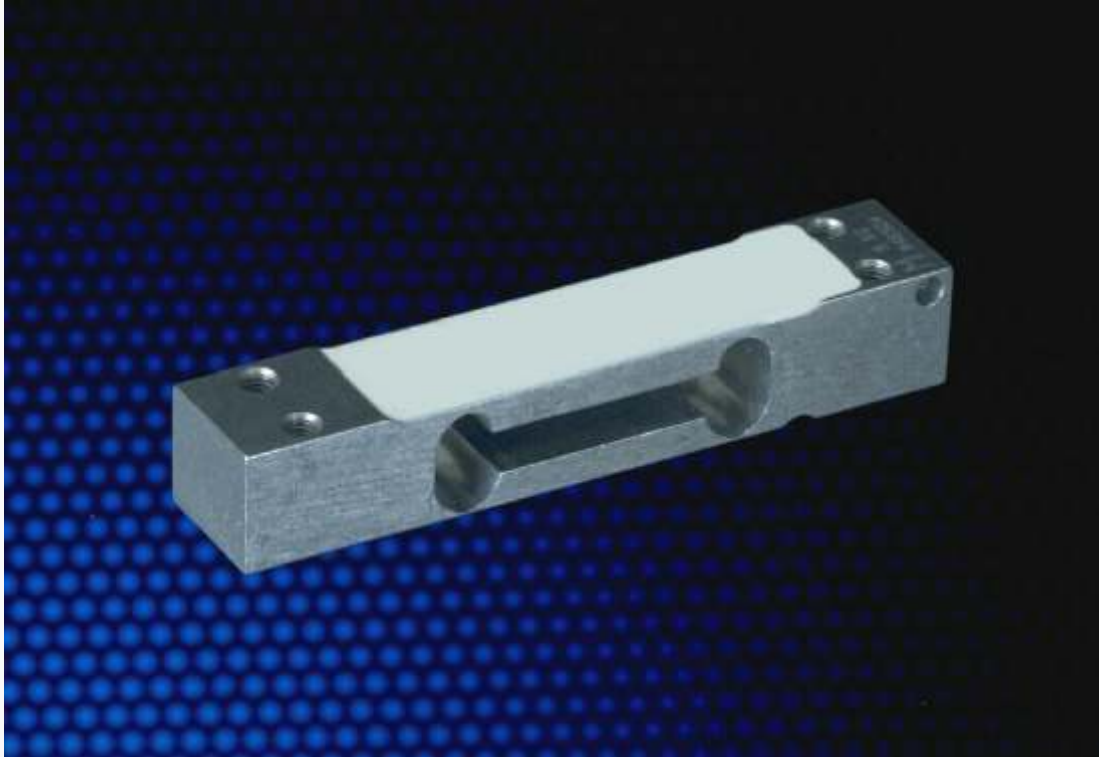


1022

Platform Load Cell

SENSOR
TECHNIQUES LIMITED



Platform Load Cell, Model 1022

- Approved to OIML R60 4000D
- Typical platform size 350 x 350 mm
- Available in capacity ranges from 3 kg to 200 kg
- Ideal for retail, bench or counting scales
- Low cost, low profile construction
- Easy to mount and use
- Sealed to IP66
- 4 wire cable with screen
- Optional Hazardous area approval (ATEX) available

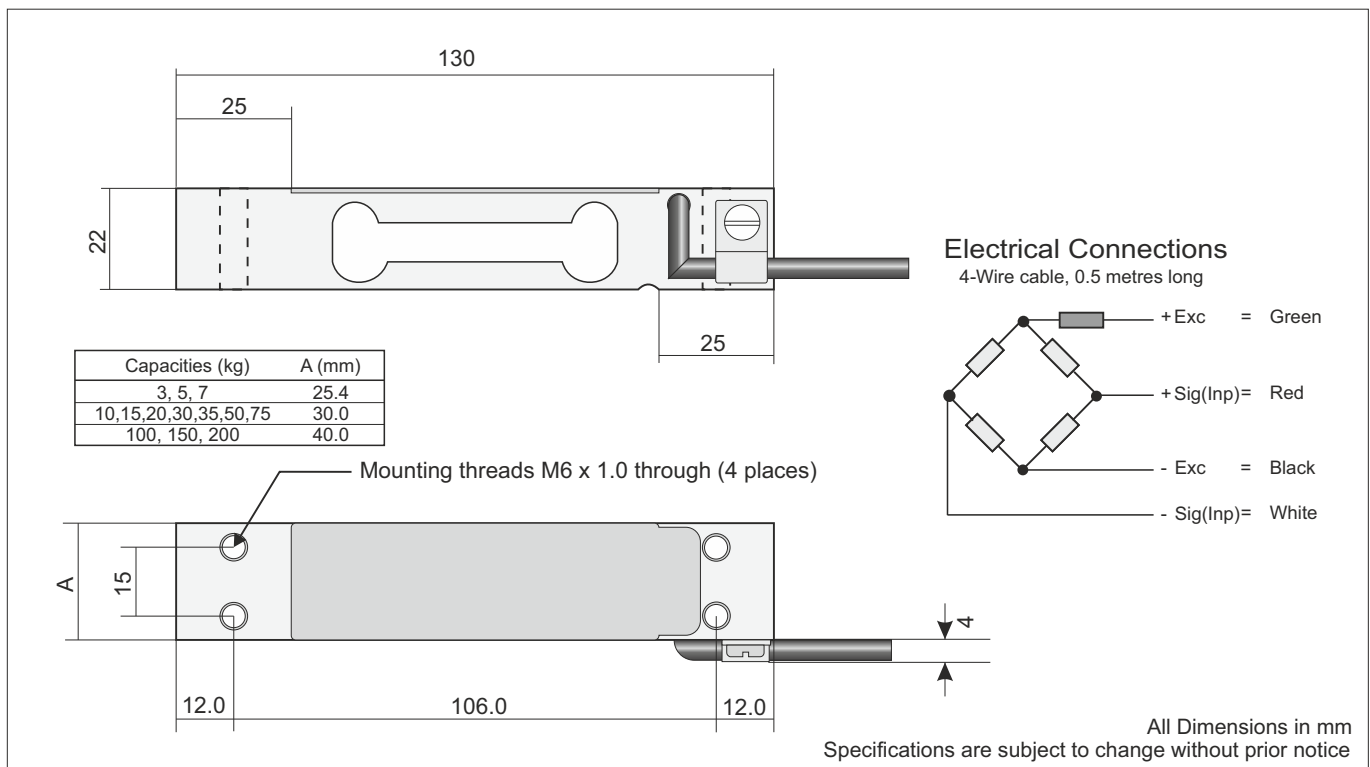
Technical Data

Model 1022

GRADE		E	G	C3	C4
Number of Load Cell Intervals	n (max)			3000	4000
Minimum Utilisation	% Rated Cap.			50	40
Minimum Verification Interval	Vmin=Emax/.			6000	10000
Total Error	% Rated Load	0.050	0.020	0.020	0.015
Zero Return after 30 mins	% Appl. Load	0.050	0.017	0.017	0.013
Temperature Effect on : Span	%Appl. Ld./10K	0.030	0.010	0.010	0.008
Zero	%ORL/10K	0.100	0.023	0.023	0.014
Output at Rated Load (ORL)	mV/V	2			
Output at Rated Load Tolerance	%	± 10			
Input Impedance	Ohm	415 ± 15			
Output Impedance	Ohm	350 ± 3			
Recommended Supply Voltage	V	10			
Compensated Temp. Range	°C	-10 to +40			
Operating Temperature Range	°C	-20 to +70			
Deflection	mm	< 0.4			
Safe Overload	% Rated Cap.	150			
Maximum Overload	% Rated Cap.	200			
Ultimate Overload	% Rated Cap.	300			
Cable Length	m	0.5			
Typical Platform Size	mm	350 x 350			
Environmental Protection		IP66			
Rated Capacities (Emax)	Kg	3, 5, 7, 10, 15, 20, 30, 35, 50, 75, 100, 150, 200*			

NMI-Certificate TC2792. *200 kg versions not OIML approved

Dimensions



DS1022-7, 02/16

SENSOR

TECHNIQUES LIMITED

Tel. +44 (0)1446 771185 Fax +44 (0)1446 771186

Precision Load Cells
Accessories and Mountings
Measuring Instruments and Systems