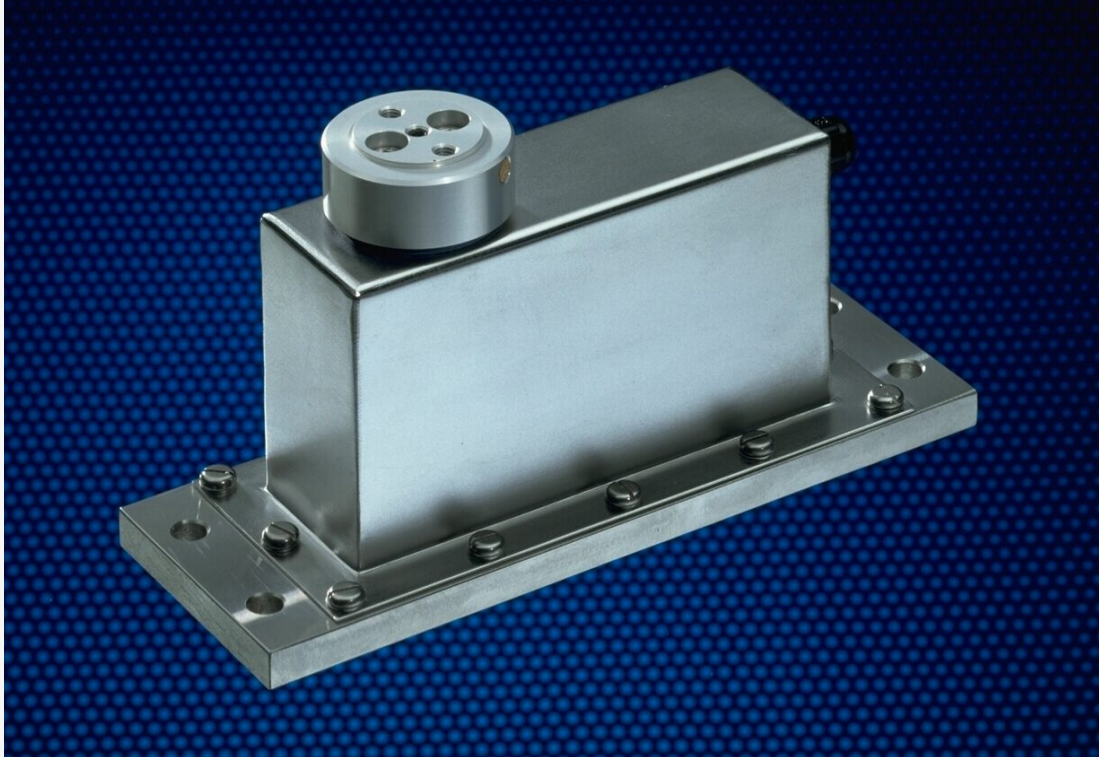


# 240

Damped Load Cell

**SENSOR**  
TECHNIQUES LIMITED



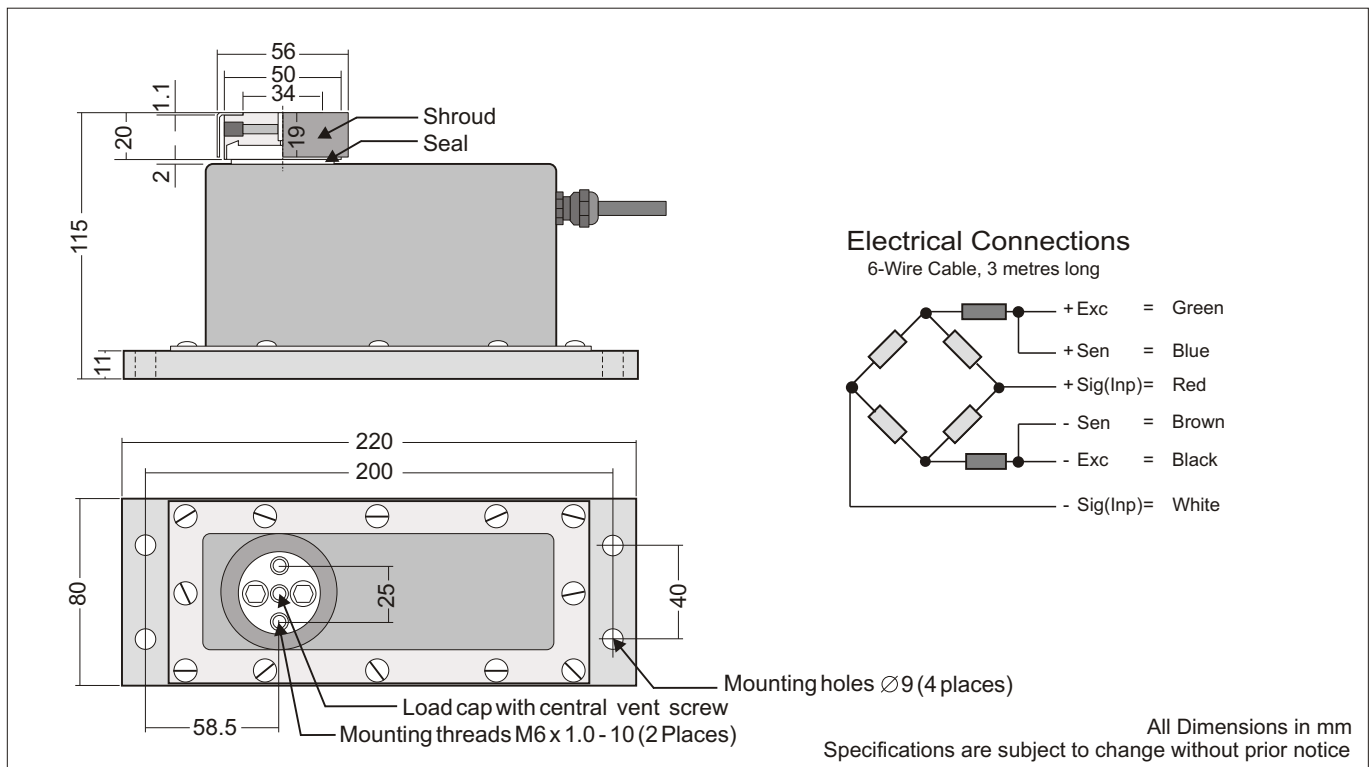
## Damped Load Cell, Model 240

- PTB Approved to OIML R60 3000 D
- Fluid damped to give extremely fast settling times
- Available in capacity ranges from 2kg to 50kg
- Ideal for Check weighers and Multi-head machines
- Integrated dual overload and under-load stops
- Sealed to IP66, optional stainless version available
- 6-wire sense technique with double shielded cable
- High fatigue strength, ideal for dynamic applications

GRADE		HSW	C1	C2	C3
Number of Load Cell Intervals	n (max)		1000	2000	3000
Minimum Utilisation	% Rated Cap.		60	60	60
Minimum Verification Interval	Vmin=Emax/.		1666	3333	5000
Total Error	% Appl. Load	0.050	0.050	0.025	0.020
Zero Return after 30 mins	% Appl. Load	0.075	0.050	0.025	0.015
Temperature Effect on : Span	%Appl. Ld./10K	N/A	0.030	0.015	0.010
Zero	%ORL/10K	N/A	0.080	0.040	0.026
Output at Rated Load (ORL)	mV/V		2		
Output at Rated Load Tolerance	%		± 10		
Input Impedance	Ohm		415 ± 15		
Output Impedance	Ohm		350 ± 3		
Recommended Supply Voltage	V		10		
Compensated Temp. Range	°C		-10 to +40		
Operating Temperature Range	°C		-30 to +70		
Deflection	mm		< 0.4		
Safe Overload	% Rated Cap.		150		
Maximum Overload	% Rated Cap.		200		
Ultimate Overload	% Rated Cap.		300		
Cable Length	m		3		
Typical Platform Size	mm		Painted Steel or Stainless Steel		
Environmental Protection			IP66		
Rated Capacities (Emax)	Kg		2*, 3*, 5, 7, 10, 15, 20, 30, 50		

NMI - Certificate TC2339, OIML-R60. \*2 & 3 kg versions not approved

Dimensions



DS240-3, 10/07



TECHNIQUES LIMITED

Tel. +44 (0)1446 771185 Fax +44 (0)1446 771186

Precision Load cells  
Accessories and Mountings  
Measuring Instruments and Systems