

IVECO

Body Components and Front & Rear Lighting



Edition 1

Introduction

Bison Parts are one of the UK fastest growing Commercial Vehicle specialists of steering, suspension and body components.

All products are new, unused and made to original equipment specification. Allowing peace of mind and easy assured fitment.

Our Body Component range cover most major manufacturer including: Daf, Foden, Iveco, Man, Mercedes, Renault, Scania, and Volvo. We work hard to source new models and are always looking to add to our range.

Products we specialize in include: Headlights, Bumpers, Grills, Mud Wings, Step Surrounds & Plates, Headlamp surrounds & Brackets, Re-placement Glass, Indicator lamps and lenses, Spot and Fog Lights, Wing Repeater lamps, Tail lamps, Wiring looms, Air Deflectors, Door Handles and Many More.

We pride ourselves on offering competitive prices on a wide range of quality products, while not compromising on price over quality.

We offer a next day delivery services (UK Mainland) on all orders placed before 4pm, subject to availability. So get all your products from a reliable and fast source!

For More information or extra technical help please contact us on 07792813409 where we will be pleased to help you and take your order.

*Do you run a fleet of vehicles or a small Factor Group? If so, why not contact us and see what we can do for you. If you require larger quantities then contact us for a bespoke quote.

If you can not find what you are looking for in our catalogue please contact our technical sales on the numbers below.

Contact

Tel: 07792813409

Fax: 01142618194

Email: sales@bisonparts.co.uk



Contents

Models	Page Ref
Eurocargo 60E - 100E	4
Eurocargo Lighting 60E - 100E	5
Eurocargo 120E - 140E	6
Eurocargo Lighting 120E - 140E	7
Eurocargo 150E	8
Eurocargo Lighting 150E	9
Eurocargo Tector 75E - 120E	10
Eurocargo Tector Lighting 75E - 120E	11
Eurocargo Tector 130E – 180E	12
Eurocargo Tector Lighting 130E - 180E	14
Eurostar	15
Eurostar Lighting	17
Eurotech	18
Eurotech Lighting	20
Eurotrakker	21
Eurotrakker Lighting	23
Stralis Active Space (>2006)	24
Stralis Active Space Lighting (>2006)	26
Stralis Active Day & Time (>2006)	27
Stralis Active Day & Time Lighting (>2006)	29
Stralis Active Space (2007 on)	30
Stralis Active Space Lighting (2007 on)	32
Stralis Active Day & Time (2007 on)	33
Stralis Active Day & Time Lighting (2007 on)	35
Cross Reference	36

Disclaimer

Whilst every opportunity to ensure that the information contained in this catalogue is accurate Bison Parts do not accept liability for any inaccuracies

When ordering specific parts the fitter must ensure that the replacement part is suitable for the application required, as Bison Parts does not accept any liability for incorrect fitment.



IVE010
FRONT WHEEL DROP WING - RH



IVE009
METAL TRADE PLATE - RH & LH



IVE011
FRONT WHEEL DROP WING - LH



IVE009
METAL TRADE PLATE - LH & RH



IVE007
FRONT WHEEL STEP WING - RH



IVE003
VALANCE PANEL - RH



IVE002
GRILL
*GRILL MESH INSERTS
ALSO AVAILABLE



IVE004
VALANCE PANEL - LH



IVE008
FRONT WHEEL STEP WING - LH



IVE082
NUMBER PLATE HOLDER



IVE001
BUMPER



IVE006
SIDE SUPPORT - LH



IVE084
KICK PLATE - LH



IVE083
FRONT BUMPER STEP



IVE005
SIDE SUPPORT - RH



IVE081
BUMPER INSERT

EUROCARGO 01/1991 TO 07/2006

60E10/12/14 65E10/12/14 75E12/14 80E15/18/21

100E15/18/21 180E21



MOUNTING = 2 x M8 STUDS AT 152MM CENTRES
 CONNECTION = IVECO 7 / 8 SPADE TERMINAL SOCKET
 DIMENSIONS = 466 x 130 x 81MM



IVE022
 LEFT HAND FITTING WITH NUMBER PLATE LAMP
IVE023
 RIGHT HAND FITTING WITHOUT NUMBER PLATE LAMP
IVE024
 RIGHT OR LEFT HAND REPLACEMENT LENS



IVE025
 LEFT HAND FITTING WITH REVERSE LAMP
IVE026
 RIGHT HAND FITTING WITH REAR FOG LAMP
IVE027
 RIGHT HAND REPLACEMENT LENS WITH REAR FOG LAMP
IVE028
 LEFT HAND REPLACEMENT LENS WITH REVERSE LAMP

MOUNTING = 4 x M6 STUDS AT 190/60 CENTRES
 CONNECTION = DOUBLE IVECO SOCKET
 DIMENSIONS = 302 x 128 x 79



IVE018
 FRONT INDICATOR – RH

PLASTIC BUMPER MODELS



IVE012
 HEADLIGHT * W/O LEVELLING – RH
IVE014
 HEADLIGHT *WITH LEVELLING – RH

PLASTIC BUMPER MODELS



IVE013
 HEADLIGHT * W/O LEVELLING – LH
IVE015
 HEADLIGHT *WITH LEVELLING – LH



IVE019
 FRONT INDICATOR – LH



IVE020
 FRONT FOG & SPOT – RH

METAL BUMPER MODELS



IVE016
 HEADLIGHT – RH

METAL BUMPER MODELS



IVE017
 HEADLIGHT – LH



IVE021
 FRONT FOG & SPOT – RH

EUROCARGO 01/1991 TO 07/2006

60E10/12/14 65E10/12/14 75E12/14 80E15/18/21

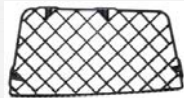
100E15/18/21 180E21



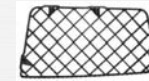
IVE010
FRONT WHEEL DROP WING - RH



IVE009
UPPER METAL TRADE
PLATE - RH & LH



IVE035
LOWER METAL TRADE
PLATE - RH & LH



IVE009
UPPER METAL TRADE
PLATE - LH & RH



IVE035
LOWER METAL TRADE
PLATE - LH & RH



IVE011
FRONT WHEEL DROP WING - LH



IVE030
FRONT WHEEL
STEP WING - RH



IVE032
FOOTBOARD
FRAME - RH



IVE004
VALANCE PANEL - RH



IVE002
GRILL
*GRILL MESH INSERTS
ALSO AVAILABLE



IVE005
VALANCE PANEL - LH



IVE033
FOOTBOARD
FRAME - LH



IVE031
FRONT WHEEL STEP
WING - LH



IVE082
NUMBER PLATE HOLDER



IVE083
FRONT BUMPER STEP



IVE034
SIDE SUPPORT - RH & LH



IVE029
BUMPER



IVE088
BUMPER INSERT



IVE034
SIDE SUPPORT - LH & RH



MOUNTING = 2 x M8 STUDS AT 152MM CENTRES
 CONNECTION = IVECO 7 / 8 SPADE TERMINAL SOCKET
 DIMENSIONS = 466 x 130 x 81MM



IVE022
 LEFT HAND FITTING
 WITH NUMBER PLATE LAMP
IVE023
 RIGHT HAND FITTING
 WITHOUT NUMBER PLATE LAMP
IVE024
 RIGHT OR LEFT HAND
 REPLACEMENT LENS



MOUNTING = 4 x M6 STUDS AT 190/60 CENTRES
 CONNECTION = DOUBLE IVECO SOCKET
 DIMENSIONS = 302 x 128 x 79

IVE025
 LEFT HAND FITTING
 WITH REVERSE LAMP
IVE026
 RIGHT HAND FITTING
 WITH REAR FOG LAMP
IVE027
 RIGHT HAND
 REPLACEMENT LENS WITH
 REAR FOG LAMP
IVE028
 LEFT HAND
 REPLACEMENT LENS WITH
 REVERSE LAMP



IVE018
 FRONT INDICATOR – RH

PLASTIC BUMPER MODELS



IVE012
 HEADLIGHT * W/O LEVELLING – RH
IVE014
 HEADLIGHT *WITH LEVELLING – RH

PLASTIC BUMPER MODELS



IVE013
 HEADLIGHT * W/O LEVELLING – LH
IVE015
 HEADLIGHT *WITH LEVELLING – LH



IVE019
 FRONT INDICATOR – LH



IVE020
 FRONT FOG & SPOT – RH

METAL BUMPER MODELS



IVE016
 HEADLIGHT – RH

METAL BUMPER MODELS



IVE017
 HEADLIGHT – LH



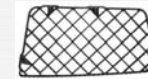
IVE021
 FRONT FOG & SPOT – LH



IVE042
FRONT WHEEL DROP WING – RH



IVE009
UPPER METAL TRADE
PLATE – RH & LH



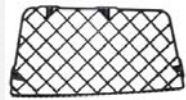
IVE009
UPPER METAL TRADE
PLATE – LH & RH



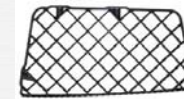
IVE043
FRONT WHEEL DROP WING – LH



IVE039
FRONT WHEEL
STEP WING – RH



IVE041
MIDDLE METAL TRADE
PLATE – RH & LH



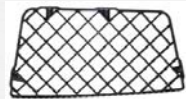
IVE041
MIDDLE METAL TRADE
PLATE – LH & RH



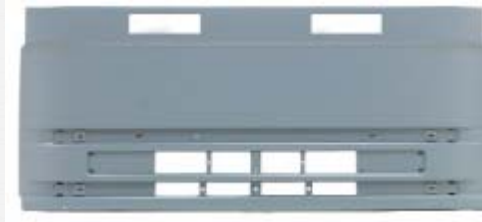
IVE040
FRONT WHEEL STEP
WING – LH



IVE037
FOOTBOARD
FRAME – RH



IVE035
LOWER METAL TRADE
PLATE – RH & LH



IVE002
GRILL
*GRILL MESH INSERTS
ALSO AVAILABLE



IVE035
LOWER METAL TRADE
PLATE – LH & RH



IVE038
FOOTBOARD
FRAME – LH



IVE082
NUMBER PLATE HOLDER



IVE004
VALANCE PANEL – RH



IVE036
BUMPER



IVE005
VALANCE PANEL – LH



IVE083
FRONT BUMPER STEP



IVE088
BUMPER INSERT



MOUNTING = 2 x M8 STUDS AT 152MM CENTRES
 CONNECTION = IVECO 7 / 8 SPADE TERMINAL SOCKET
 DIMENSIONS = 466 x 130 x 81MM



IVE022
 LEFT HAND FITTING
 WITH NUMBER PLATE LAMP
IVE023
 RIGHT HAND FITTING
 WITHOUT NUMBER PLATE LAMP
IVE024
 RIGHT OR LEFT HAND
 REPLACEMENT LENS



IVE025
 LEFT HANDFITTING
 WITH REVERSE LAMP
IVE026
 RIGHT HAND FITTING
 WITH REAR FOG LAMP
IVE027
 RIGHT HAND
 REPLACEMENT LENS WITH
 REAR FOG LAMP
IVE028
 LEFT HAND
 REPLACEMENT LENS WITH
 REVERSE LAMP

MOUNTING = 4 x M6 STUDS AT 190/60 CENTRES
 CONNECTION = DOUBLE IVECO SOCKET
 DIMENSIONS = 302 x 128 x 79



IVE018
 FRONT INDICATOR – RH

PLASTIC BUMPER MODELS



IVE012
 HEADLIGHT * W/O LEVELLING – RH
IVE014
 HEADLIGHT *WITH LEVELLING – RH

PLASTIC BUMPER MODELS



IVE013
 HEADLIGHT * W/O LEVELLING – LH
IVE015
 HEADLIGHT *WITH LEVELLING – LH



IVE019
 FRONT INDICATOR – LH



IVE020
 FRONT FOG & SPOT – RH

METAL BUMPER MODELS



IVE016
 HEADLIGHT – RH

METAL BUMPER MODELS



IVE017
 HEADLIGHT – LH



IVE021
 FRONT FOG & SPOT – RH



IVE049
FRONT WHEEL DROP WING – RH



IVE047
VALANCE PANEL – RH



IVE048
VALANCE PANEL – LH



IVE050
FRONT WHEEL DROP WING – LH



IVE053
FRONT WHEEL STEP WING
*WITHOUT SIDE STILL FLAP – RH



IVE056
UPPER STEP – RH & LH



IVE046
GRILL



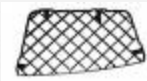
IVE046
UPPER STEP – RH & LH



IVE054
FRONT WHEEL STEP WING
*WITHOUT SIDE STILL – LH



IVE051
FRONT WHEEL STEP WING
*WITH SIDE STILL FLAP – RH



IVE055
LOWER STEP – RH & LH



IVE044
BUMPER *WITHOUT STOPT LAMP HOLES



IVE055
LOWER STEP – RH & LH



IVE045
BUMPER *WITH STOT LAMP HOLES



IVE052
FRONT WHEEL STEP WING
*WITH SIDE STILL – LH



MOUNTING = 2 x M8 STUDS AT 152MM CENTRES
 CONNECTION = IVECO 7 / 8 SPADE TERMINAL SOCKET
 DIMENSIONS = 466 x 130 x 81MM



IVE022
 LEFT HAND FITTING
 WITH NUMBER PLATE LAMP
IVE023
 RIGHT HAND FITTING
 WITHOUT NUMBER PLATE LAMP
IVE024
 RIGHT OR LEFT HAND
 REPLACEMENT LENS



MOUNTING = 4 x M6 STUDS AT 190/60 CENTRES
 CONNECTION = DOUBLE IVECO SOCKET
 DIMENSIONS = 302 x 128 x 79

IVE025
 LEFT HAND FITTING
 WITH REVERSE LAMP
IVE026
 RIGHT HAND FITTING
 WITH REAR FOG LAMP
IVE027
 RIGHT HAND
 REPLACEMENT LENS WITH
 REAR FOG LAMP
IVE028
 LEFT HAND
 REPLACEMENT LENS WITH
 REVERSE LAMP



IVE069
 HEADLIGHT - RH



IVE070
 HEADLIGHT - LH



IVE071
 FRONT INDICATOR - RH & LH



IVE0071
 FRONT INDICATOR - RH & LH



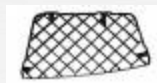
IVE059
FRONT WHEEL STEP WING
*WITHOUT SIDE STILL FLAP - RH



IVE060
FRONT WHEEL STEP WING
*WITHOUT SIDE STILL - LH



IVE061
FRONT WHEEL STEP WING
*WITH SIDE STILL FLAP - RH



IVE056
UPPER STEP - RH & LH



IVE057
BUMPER *WITHOUT STOPT LAMP HOLES



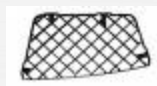
IVE056
UPPER STEP - RH & LH



IVE062
FRONT WHEEL STEP WING
*WITH SIDE STILL - LH



IVE063
BOTTOM STEP SURROUND - RH



IVE055
LOWER STEP - RH & LH



IVE058
BUMPER *WITH STOT LAMP HOLES



IVE055
LOWER STEP - RH & LH



IVE064
BOTTOM STEP SURROUND - LH



IVE067
FRONT WHEEL DROP WING
*WITH SIDE STILL FLAP - RH



IVE065
FRONT WHEEL DROP WING
*WITHOUT SIDE STILL FLAP - RH



IVE066
FRONT WHEEL DROP WING
*WITHOUT SIDE STILL FLAP - RH



IVE068
FRONT WHEEL DROP WING
*WITH SIDE STILL FLAP - LH



MOUNTING = 2 x M8 STUDS AT 152MM CENTRES
 CONNECTION = IVECO 7 / 8 SPADE TERMINAL SOCKET
 DIMENSIONS = 466 x 130 x 81MM



IVE022
 LEFT HAND FITTING
 WITH NUMBER PLATE LAMP
IVE023
 RIGHT HAND FITTING
 WITHOUT NUMBER PLATE LAMP
IVE024
 RIGHT OR LEFT HAND
 REPLACEMENT LENS



IVE025
 LEFT HAND FITTING
 WITH REVERSE LAMP
IVE026
 RIGHT HAND FITTING
 WITH REAR FOG LAMP
IVE027
 RIGHT HAND
 REPLACEMENT LENS WITH
 REAR FOG LAMP
IVE028
 LEFT HAND
 REPLACEMENT LENS WITH
 REVERSE LAMP

MOUNTING = 4 x M6 STUDS AT 190/60 CENTRES
 CONNECTION = DOUBLE IVECO SOCKET
 DIMENSIONS = 302 x 128 x 79



IVE069
 HEADLIGHT - RH



IVE070
 HEADLIGHT - LH



IVE071
 FRONT INDICATOR - RH & LH



IVE071
 FRONT INDICATOR - RH & LH



IVE107
STEP SURROUND – RH



IVE108
STEP SURROUND – LH



IVE041
MIDDLE STEP – RH & LH



IVE103
DEFLECTOR – RH



IVE103
GRILL



IVE104
DEFLECTOR – LH



IVE041
MIDDLE STEP – LH & RH



IVE035
BOTTOM STEP – RH & LH



IVE105
CORNER BUMPER – RH



IVE101
BUMPER *WITHOUT SPOT LIGHT HOLES
IVE100
BUMPER *WITH SPOT LIGHT HOLES



IVE106
CORNER BUMPER – LH



IVE035
BOTTOM STEP – LH & RH

REAR WINGS



IVE114
RIBBED TOP WING - RH & LH



IVE115
FRONT - RH
IVE117
REAR - RH



IVE116
FRONT - LH
IVE118
REAR - LH



REAR WINGS



IVE109
SMOOTH TOP WING
*STANDARD PROFILE
IVE110
*LOWER PROFILE



IVE113
FASTENER



IVE111
REAR WING - RH



IVE112
REAR WING - LH

FRONT WINGS



IVE119
FRONT WHEEL DROP WING - RH



IVE120
FRONT WHEEL DROP WING - LH

EUROSTAR 01/1991 TO 07/2006



MOUNTING = 2 x M8 STUDS AT 152MM CENTRES
 CONNECTION = IVECO 7 / 8 SPADE TERMINAL SOCKET
 DIMENSIONS = 466 x 130 x 81MM



IVE022
 LEFT HAND FITTING
 WITH NUMBER PLATE LAMP
IVE023
 RIGHT HAND FITTING
 WITHOUT NUMBER PLATE LAMP
IVE024
 RIGHT OR LEFT HAND
 REPLACEMENT LENS



MOUNTING = 4 x M6 STUDS AT 190/60 CENTRES
 CONNECTION = DOUBLE IVECO SOCKET
 DIMENSIONS = 302 x 128 x 79

IVE025
 LEFT HAND FITTING
 WITH REVERSE LAMP
IVE026
 RIGHT HAND FITTING
 WITH REAR FOG LAMP
IVE027
 RIGHT HAND
 REPLACEMENT LENS WITH
 REAR FOG LAMP
IVE028
 LEFT HAND
 REPLACEMENT LENS WITH
 REVERSE LAMP



IVE226
 HEADLIGHT *WITH LEVELLING – RH



IVE227
 HEADLIGHT *WITH LEVELLING – LH



IVE079
 FRONT INDICATOR – RH



IVE080
 FRONT INDICATOR – LH



IVE020
 FRONT FOG & SPOT – RH



IVE021
 FRONT FOG & SPOT – LH

EUROSTAR 01/1991 TO 07/2006



190E42/52 240E42P/S 240E47P/S 440E42T/P 440E47T/P 440E52T/P



IVE009
TOP STEP - RH & LH



IVE127
UPPER STEP WING - RH



IVE128
UPPER STEP WING - LH



IVE009
TOP STEP - LH & RH



IVE125
STEP SURROUND - RH



IVE123
DEFLECTOR - RH



IVE22
GRILL



IVE124
DEFLECTOR - LH



IVE126
STEP SURROUND - LH



IVE041
MIDDLE STEP - RH & LH



IVE121
BUMPER *WITHOUT SPOT LIGHT HOLES



IVE041
MIDDLE STEP - LH & RH



IVE035
BOTTOM STEP - RH & LH



IVE035
BOTTOM STEP - LH & RH

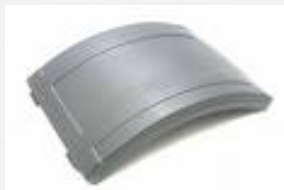


IVE129
BUMPER STEP - RH & LH



EUROTECH 01/1991 TO 07/2006

REAR WINGS



IVE114
RIBBED TOP WING - RH & LH



IVE115
FRONT - RH
IVE117
REAR - RH



IVE116
FRONT - LH
IVE118
REAR - LH



REAR WINGS



IVE109
SMOOTH TOP WING
*STANDARD PROFILE
IVE110
*LOWER PROFILE



IVE113
FASTENER



IVE111
REAR WING - RH



IVE112
REAR WING - LH

FRONT WINGS



IVE119
FRONT WHEEL DROP WING - RH



IVE120
FRONT WHEEL DROP WING - LH



MOUNTING = 2 x M8 STUDS AT 152MM CENTRES
 CONNECTION = IVECO 7 / 8 SPADE TERMINAL SOCKET
 DIMENSIONS = 466 x 130 x 81MM



IVE022
 LEFT HAND FITTING
 WITH NUMBER PLATE LAMP
IVE023 - RIGHT HAND FITTING
 WITHOUT NUMBER PLATE LAMP
IVE024
 RIGHT OR LEFT HAND
 REPLACEMENT LENS



MOUNTING = 4 x M6 STUDS AT 190/60 CENTRES
 CONNECTION = DOUBLE IVECO SOCKET
 DIMENSIONS = 302 x 128 x 79

IVE025
 LEFT HAND FITTING
 WITH REVERSE LAMP
IVE026
 RIGHT HAND FITTING
 WITH REAR FOG LAMP
IVE027
 RIGHT HAND
 REPLACEMENT LENS WITH
 REAR FOG LAMP
IVE028
 LEFT HAND
 REPLACEMENT LENS WITH
 REVERSE LAMP



IVE227
 HEADLIGHT *WITH LEVELLING - RH



IVE228
 HEADLIGHT *WITH LEVELLING - LH



IVE079
 FRONT INDICATOR - RH



IVE080
 FRONT INDICATOR - LH



IVE020
 FRONT FOG & SPOT - RH



IVE021
 FRONT FOG & SPOT - LH

EUROTECH 01/1991 TO 07/2006



IVE009
TOP STEP - RH & LH



IVE127
UPPER STEP WING - RH



IVE128
UPPER STEP WING - LH



IVE009
TOP STEP - LH & RH



IVE133
STEP SURROUND - RH



IVE123
DEFLECTOR - RH



IVE22
GRILL



IVE124
DEFLECTOR - LH



IVE134
STEP SURROUND - LH



IVE130
METAL BUMPER - RH



IVE131
METAL BUMPER CENTER



IVE132
METAL BUMPER - LH



IVE129
BUMPER STEP - RH & LH



EUROTRAKKER 01/1991 TO 07/2006

REAR WINGS



IVE114
RIBBED TOP WING - RH & LH



IVE115
FRONT - RH
IVE117
REAR - RH



IVE116
FRONT - LH
IVE118
REAR - LH



REAR WINGS



IVE109
SMOOTH TOP WING
*STANDARD PROFILE
IVE110
*LOWER PROFILE



IVE113
FASTENER



IVE111
REAR WING - RH



IVE112
REAR WING - LH

FRONT WINGS



IVE119
FRONT WHEEL DROP WING - RH



IVE120
FRONT WHEEL DROP WING - LH

EUROTRAKKER 01/1991 TO 07/2006



MOUNTING = 2 x M8 STUDS AT 152MM CENTRES
 CONNECTION = IVECO 7 / 8 SPADE TERMINAL SOCKET
 DIMENSIONS = 466 x 130 x 81MM



IVE022
 LEFT HAND FITTING
 WITH NUMBER PLATE LAMP
IVE023
 RIGHT HAND FITTING
 WITHOUT NUMBER PLATE LAMP
IVE024
 RIGHT OR LEFT HAND
 REPLACEMENT LENS



IVE025
 LEFT HAND FITTING
 WITH REVERSE LAMP
IVE026
 RIGHT HAND FITTING
 WITH REAR FOG LAMP
IVE027
 RIGHT HAND
 REPLACEMENT LENS WITH
 REAR FOG LAMP
IVE028
 LEFT HAND
 REPLACEMENT LENS WITH
 REVERSE LAMP

MOUNTING = 4 x M6 STUDS AT 190/60 CENTRES
 CONNECTION = DOUBLE IVECO SOCKET
 DIMENSIONS = 302 x 128 x 79



METAL BUMPER MODELS



IVE016
 HEADLIGHT - RH

METAL BUMPER MODELS



IVE017
 HEADLIGHT - LH

EUROTRAKKER 01/1991 TO 07/2006



IVE165
STEP WING - RH



IVE167
DOOR EXTENSION - RH



IVE168
DOOR EXTENSION - LH



IVE166
STEP WING - LH

SORRY PICTURE IS
NOT AVAILABLE

SORRY PICTURE IS
NOT AVAILABLE



IVE159
BOTTOM STEP - RH

IVE169
UPPER TREAD
PLATE - RH



IVE161
TOP STEP - RH
IVE163
BOTTOM STEP - RH



IVE153
DEFLECTOR - RH



IVE152
GRILL



IVE154
DEFLECTOR - LH

IVE170
UPPER TREAD
PLATE - LH



IVE162
TOP STEP - LH
IVE164
BOTTOM STEP - LH



IVE160
BOTTOM STEP - LH



IVE155
SPOILER CORNER - RH



IVE156
SPOILER MIDDLE - RH



IVE150
FRONT BUMPER



IVE157
SPOILER MIDDLE - LH

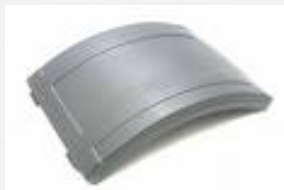


IVE158
SPOILER CORNER - LH



IVE151
BUMPER STEP PLATE

REAR WINGS



IVE114
RIBBED TOP WING - RH & LH



IVE115
FRONT - RH
IVE117
REAR - RH



IVE116
FRONT - LH
IVE118
REAR - LH



REAR WINGS



IVE109
SMOOTH TOP WING
*STANDARD PROFILE
IVE110
*LOWER PROFILE



IVE113
FASTENER



IVE111
REAR WING - RH



IVE112
REAR WING - LH

FRONT WINGS



IVE119
FRONT WHEEL DROP WING - RH



IVE120
FRONT WHEEL DROP WING - LH



IVE177
INDICATOR - RH



IVE175
HEADLIGHT
*MANUAL - RH



IVE176
HEADLIGHT
*MANUEL - LH



IVE178
INDICATOR - LH



IVE183
INDICATOR - RH



IVE179
OUTSIDE FOGLAMP
*CLEAR - RH & LH
IVE181

OUTSIDE FOGLAMP
*BLUE - RH & LH



IVE180
INSIDE SPOTLAMP
*CLEAR - RH & LH
IVE182

INSIDE SPOTLAMP
*BLUE - RH & LH



IVE180
INSIDE SPOTLAMP
*CLEAR - RH & LH
IVE182

INSIDE SPOTLAMP
*BLUE - RH & LH



IVE179
OUTSIDE FOGLAMP
*CLEAR - RH & LH
IVE181

OUTSIDE FOGLAMP
*BLUE - RH & LH



IVE184
INDICATOR - LH



IVE159
BOTTOM STEP – RH



IVE161
TOP STEP – RH
IVE163
BOTTOM STEP – RH



IVE173
DEFLECTOR – RH



IVE172
GRILL



IVE174
DEFLECTOR – LH



IVE162
TOP STEP – LH
IVE164
BOTTOM STEP – LH



IVE160
BOTTOM STEP – LH



IVE155
SPOILER CORNER – RH



IVE156
SPOILER MIDDLE – RH



IVE171
FRONT BUMPER



IVE151
BUMPER STEP PLATE



IVE157
SPOILER MIDDLE – LH



IVE158
SPOILER CORNER – LH

REAR WINGS



IVE114
RIBBED TOP WING - RH & LH



IVE115
FRONT - RH
IVE117
REAR - RH



IVE116
FRONT - LH
IVE118
REAR - LH



REAR WINGS



IVE109
SMOOTH TOP WING
*STANDARD PROFILE
IVE110
*LOWER PROFILE



IVE113
FASTENER



IVE111
REAR WING - RH



IVE112
REAR WING - LH

FRONT WINGS



IVE119
FRONT WHEEL DROP WING - RH



IVE120
FRONT WHEEL DROP WING - LH



IVE177
INDICATOR – RH



IVE175
HEADLIGHT
*MANUAL – RH



IVE176
HEADLIGHT
*MANUEL – LH



IVE178
INDICATOR – LH



IVE183
INDICATOR – RH



IVE179
OUTSIDE FOGLAMP
*CLEAR – RH & LH

IVE181
OUTSIDE FOGLAMP
*BLUE – RH & LH



IVE180
INSIDE SPOTLAMP
*CLEAR – RH & LH

IVE182
INSIDE SPOTLAMP
*BLUE – RH & LH



IVE180
INSIDE SPOTLAMP
*CLEAR – RH & LH

IVE182
INSIDE SPOTLAMP
*BLUE – RH & LH



IVE179
OUTSIDE FOGLAMP
*CLEAR – RH & LH

IVE181
OUTSIDE FOGLAMP
*BLUE – RH & LH

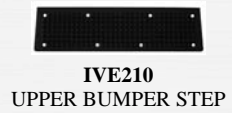


IVE184
INDICATOR – LH

STRALIS 01/2001 TO 2007



ACTIVE DAY & ACTIVE TIME 190S27/31/40/43AD 190S31/43AT



IVE210
UPPER BUMPER STEP



IVE211
LOWER BUMPER STEP



IVE218
GRILL



IVE216
FRONT BUMPER *WHITE



IVE207
UPPER COVER - LH



IVE206
UPPER COVER - RH



IVE217
FRONT BUMPER *BLACK



IVE209
SIDE COVER - LH



IVE208
SIDE COVER - RH



IVE205
COVER



IVE204
CENTRE COVER



IVE205
COVER



IVE200
SPOILER CORNER - RH



IVE199
SPOILER MIDDLE



IVE201
SPOILER CORNER - LH

REAR WINGS STAYS



- IVE195**
WING STAY REAR SIDE -RH
- IVE196**
WING STAY REAR SIDE -LH
- IVE197**
WING STAY FRONT SIDE -RH
- IVE198**
WING STAY FRONT SIDE -LH



REAR WINGS



- IVE190**
*STANDARD PROFILE
- IVE189**
*LOWER PROFILE



IVE191
REAR MUDGUARD RH & LH REAR
PART (LONG)



IVE192
REAR MUDGUARD RH & LH REAR
PART (SHORT)

FRONT WINGS



IVE193
FRONT WHEEL DROP WING - RH



IVE194
FRONT WHEEL DROP WING - LH



IVE212
SPOT & FOG LAMP
BEZEL COVER - RH



IVE214
SPOT & FOG LAMP
BRACKET - RH



IVE185
INDICATOR - RH



IVE213
SPOT & FOG LAMP
BEZEL COVER - LH



IVE215
SPOT & FOG LAMP
BRACKET - LH



IVE186
INDICATOR - LH



IVE175
HEADLIGHT
*MANUAL - RH



IVE176
HEADLIGHT
*MANUEL - LH



IVE183
INDICATOR - RH



IVE187
OUTSIDE FOGLAMP
CLEAR - RH & LH



IVE188
INSIDE SPOTLAMP
*CLEAR - RH & LH



IVE188
INSIDE SPOTLAMP
*CLEAR - RH & LH



IVE187
OUTSIDE FOGLAMP
CLEAR - RH & LH



IVE184
INDICATOR - LH



IVE159
BOTTOM STEP - RH



IVE161
TOP STEP - RH
IVE163
BOTTOM STEP - RH



IVE162
TOP STEP - LH
IVE164
BOTTOM STEP - LH



IVE160
BOTTOM STEP - LH



IVE210
UPPER BUMPER STEP



IVE211
LOWER BUMPER STEP



IVE202
FRONT BUMPER *WHITE



IVE207
UPPER COVER - LH



IVE206
UPPER COVER - RH



IVE203
FRONT BUMPER *BLACK



IVE209
SIDE COVER - LH



IVE208
SIDE COVER - RH



IVE205
COVER



IVE204
CENTRE COVER



IVE205
COVER



IVE200
SPOILER CORNER - RH



IVE199
SPOILER MIDDLE



IVE201
SPOILER CORNER - LH

REAR WINGS STAYS



- IVE195**
- WING STAY REAR SIDE -RH
- IVE196**
- WING STAY REAR SIDE -LH
- IVE197**
- WING STAY FRONT SIDE -RH
- IVE198**
- WING STAY FRONT SIDE -LH



REAR WINGS



- IVE190**
- *STANDARD PROFILE
- IVE189**
- *LOWER PROFILE



- IVE191**
- REAR MUDGUARD RH & LH REAR
- PART (LONG)



- IVE192**
- REAR MUDGUARD RH & LH REAR
- PART (SHORT)

FRONT WINGS



- IVE193**
- FRONT WHEEL DROP WING - RH



- IVE194**
- FRONT WHEEL DROP WING - LH



IVE212
SPOT & FOG LAMP
BEZEL COVER - RH



IVE214
SPOT & FOG LAMP
BRACKET - RH



IVE185
INDICATOR - RH



IVE183
INDICATOR - RH



IVE187
OUTSIDE FOGLAMP
CLEAR - RH & LH



IVE188
INSIDE SPOTLAMP
*CLEAR - RH & LH



IVE188
INSIDE SPOTLAMP
*CLEAR - RH & LH



IVE187
OUTSIDE FOGLAMP
CLEAR - RH & LH



IVE184
INDICATOR - LH



IVE213
SPOT & FOG LAMP
BEZEL COVER - LH



IVE215
SPOT & FOG LAMP
BRACKET - LH



IVE176
HEADLIGHT
*MANUEL - LH



IVE175
HEADLIGHT
*MANUAL - RH



IVE186
INDICATOR - LH

Bison Ref	Description	Cross Ref
IVE001	FRONT BUMPER DARK GREY (DARK GRAY)	08142590
IVE001	FRONT BUMPER DARK GREY (DARK GRAY)	42553999
IVE001	FRONT BUMPER DARK GREY (DARK GRAY)	500316865
IVE002	UPPER GRILL	8142413
IVE002	UPPER GRILL	8143802
IVE003	SIDE CORNER RH	8143812
IVE004	SIDE CORNER LH	8143813
IVE005	SUPPORT RH	8142842
IVE006	SUPPORT PANEL LH	98456508
IVE007	RH SIDE FOOT BOARD	500317944
IVE007	RH SIDE FOOT BOARD	500317946
IVE008	LH SIDE FOOT BOARD	500317945
IVE008	LH SIDE FOOT BOARD	500317947
IVE009	FRONT CENTRAL FOOT STEP	3798586
IVE009	FRONT CENTRAL FOOT STEP	8142607
IVE010	RH REAR PROTECTION	500318341
IVE011	N/S REAR CAB WING LH	500318345
IVE012	HEADLIGHT *W/O LOAD LEVELLING LH	98432534
IVE012	HEADLIGHT *W/O LOAD LEVELLING LH	0318054615
IVE013	HEADLIGHT *W/O LOAD LEVELLING RH	98432535
IVE013	HEADLIGHT *W/O LOAD LEVELLING RH	0318054616
IVE014	HEADLIGHT *C/W LOAD LEVELLING RH	4855965
IVE014	HEADLIGHT *C/W LOAD LEVELLING RH	500340550
IVE014	HEADLIGHT *C/W LOAD LEVELLING RH	0318054816
IVE015	HEADLIGHT *C/W LOAD LEVELLING LH	4855966
IVE015	HEADLIGHT *C/W LOAD LEVELLING LH	500340554
IVE015	HEADLIGHT *C/W LOAD LEVELLING LH	0318054815
IVE016	HEADLIGHT LH (METAL BUMPERS ONLY)	504032808
IVE016	HEADLIGHT LH (METAL BUMPERS ONLY)	98466403

Bison Ref	Description	Cross Ref
IVE016	HEADLIGHT LH (METAL BUMPERS ONLY)	0301017617
IVE017	HEADLIGHT RH (METAL BUMPERS ONLY)	504032809
IVE017	HEADLIGHT RH (METEL BUMPERS ONLY)	98466402
IVE017	HEADLIGHT RH (METEL BUMPERS ONLY)	0301017618
IVE018	INDICATOR LAMP LH	500340696
IVE019	INDICATOR LAMP RH	500340695
IVE020	FOG & SPOT LAMP LH	98437476
IVE021	FOG & SPOT LAMP RH	98437475
IVE022	COMPLETE REAR LAMP - RH *WITH REG LAMP	99463244
IVE022	COMPLETE REAR LAMP - RH *WITH REG LAMP	99463248
IVE023	COMPLETE REAR LAMP - RH *WITHOUT REG LAMP	99463242
IVE024	LENS FOR UNIVERSAL LAMP	42531584
IVE025	COMPLETE REAR LAMP - LH *WITH REVERSE LAMP	500382651
IVE026	COMPLETE REAR LAMP - LH *WITH REAR FOG	500382653
IVE027	REPLACEMENT LENS	93158535
IVE028	REPLACEMENT LENS	7984015
IVE028	REPLACEMENT LENS	93158536
IVE029	FRONT BUMPER	500317137
IVE030	SIDE FOOT BOARD RH	500317956
IVE031	SIDE FOOT BOARD LH	500318079
IVE032	FOOTBOARD FRAME RH	500318241
IVE033	FOOTBOARD FRAME LH	500318238
IVE034	SUPPORT RH/LH	8142843
IVE035	LOWER PLATE RH/LH	3798584
IVE035	LOWER PLATE RH/LH	8142611
IVE036	BUMPER LIGHT GREY	93938863
IVE037	FOOTBOARD FRAME RH	500318230
IVE038	FOOTBOARD FRAME LH	500318229
IVE039	FRONT MUDGUARD RH	500317978

Bison Ref	Description	Cross Ref
IVE040	FRONT MUDGUARD LH	500317979
IVE041	UPPER PLATE RH/LH	3798585
IVE041	UPPER PLATE RH/LH	8142610
IVE042	REAR PROTECTION RH	8142630
IVE043	REAR PROTECTION LH	8142629
IVE044	FRONT BUMPER (TRACTOR MODEL)	504027613
IVE044	FRONT BUMPER (TRACTOR MODEL)	504048251
IVE045	BUMPER WITH SPOT LAMP HOLES TECTOR	504027614
IVE045	BUMPER WITH SPOT LAMP HOLES TECTOR	504048252
IVE046	UPPER GRILL TECTOR	504027461
IVE047	AIR BAFFLER RH TECTOR	504027465
IVE047	AIR BAFFLER RH TECTOR	504060280
IVE048	AIR BAFFLER LH TECTOR	504027463
IVE048	AIR BAFFLER LH TECTOR	504060281
IVE049	FRONT WING RH FOR TECTOR 75	504027536
IVE050	FRONT WING LH FOR TECTOR 75	504027537
IVE051	STEP WING WITH FLAP RH	504052236
IVE052	STEP WING WITH FLAP LH	504052237
IVE053	STEP WING NO FLAP RH	504037735
IVE053	STEP WING NO FLAP RH	504058445
IVE054	STEP WING NO FLAP LH	504037737
IVE054	STEP WING NO FLAP LH	504058446
IVE055	LOWER PLATE RH/LH	504043819
IVE056	UPPER PLATE RH/LH	504043817
IVE057	BUMPER WITHOUT FOG LAMPS	504027618
IVE057	BUMPER WITHOUT FOG LAMPS	504049813
IVE058	BUMPER WITH FOG LAMPS	504027620
IVE058	BUMPER WITH FOG LAMPS	504049814
IVE059	FRONT MUDGUARD RH	504054989

Bison Ref	Description	Cross Ref
IVE060	FRONT MUDGUARD LH	504054990
IVE061	FRONT MUDGUARD RH	504054940
IVE062	FRONT MUDGUARD LH	504054941
IVE065	FRONT WING RH	504027532
IVE066	FRONT WING LH	504027533
IVE067	FRONT WING RH	504055140
IVE068	FRONT WING LH	504055141
IVE069	HEADLIGHT RH	504026622
IVE070	HEADLIGHT LH	504026621
IVE071	INDICATOR	504047573
IVE072	MESH GRILL UPPER	8143681
IVE073	MESH GRILL MIDDLE	8143680
IVE074	MESH GRILL BOTTOM	8143682
IVE075	REAR PROTECTION RH	500318338
IVE076	REAR PROTECTION LH	500318289
IVE076	REAR PROTECTION LH	500318293
IVE077	SUPPORT RH/LH	8142988
IVE079	INDICATOR LAMP RH	98449181
IVE080	INDICATOR LAMP LH	98449182
IVE100	BUMPER WITH SPOT/FOG LIGHT HOLES	98438450
IVE101	BUMPER WITHOUT SPOT/FOG LIGHT HOLES	98419670
IVE102	FRONT GRILL	98406976
IVE103	VALANCE PANEL RH	8142428
IVE104	VALANCE PANEL LH	8142427
IVE105	FRONT RH CORNER BUMPER	500389854
IVE105	FRONT RH CORNER BUMPER	98405554
IVE105	FRONT RH CORNER BUMPER	99805627
IVE106	FRONT LH CORNER BUMPER	500389853
IVE106	FRONT LH CORNER BUMPER	98405555

Bison Ref	Description	Cross Ref
IVE106	FRONT LH CORNER BUMPER	99805628
IVE107	RH STEP PLASTIC	98438466
IVE107	RH STEP PLASTIC	99805623
IVE108	LH STEP PLASTIC	98438467
IVE109	WING TOP	41032400
IVE110	STRALIS TOP WING	41032399
IVE113	WING STRAP	42533556
IVE114	TOP GUARD LH	41002927
IVE114	TOP GUARD LH	42125604
IVE115	REAR MUDGUARD (FRONT)	41002409
IVE115	REAR MUDGUARD (FRONT)	41003233
IVE116	REAR MUDGUARD (FRONT)	41016379
IVE116	REAR MUDGUARD (FRONT)	42124555
IVE117	REAR MUDGUARD (REAR)	41003047
IVE117	REAR MUDGUARD (REAR)	42125606
IVE118	REAR MUDGUARD (REAR)	41003046
IVE118	REAR MUDGUARD (REAR)	42124762
IVE119	RH REAR PROTECTION	08144469
IVE119	RH REAR PROTECTION	8144469
IVE120	LH REAR PROTECTION	08144468
IVE120	LH REAR PROTECTION	8144468
IVE121	FRONT BUMPER DARK GREY	8143031
IVE121	FRONT BUMPER DARK GREY	98438449
IVE125	RH SIDE FOOT BOARD	98417357
IVE125	RH SIDE FOOT BOARD	99805621
IVE126	LH SIDE FOOT BOARD	98417358
IVE126	LH SIDE FOOT BOARD	99805622
IVE127	RH SIDEFOOT BOARD	8144329
IVE128	LH SIDE FOOT BOARD	8144328

Bison Ref	Description	Cross Ref
IVE129	FRONT FOOTBOARD RH/LH	3798587
IVE129	FRONT FOOTBOARD RH/LH	8143222
IVE131	CORNER PANEL LH	3799217
IVE131	CORNER PANEL LH	98459137
IVE133	FOOT BOARD RH	98466161
IVE134	FOOT BOARD LH	98466162
IVE150	BUMPER WITH HOLES	500364901
IVE150	BUMPER WITH HOLES	500383946
IVE151	FRONT FOOTBOARD RH/LH	500380111
IVE151	FRONT FOOTBOARD RH/LH	504032325
IVE152	FRONT GRILL	500398112
IVE152	FRONT GRILL	504036171
IVE153	VALANCE PANEL RH	504036807
IVE153	VALANCE PANEL RH	504096162
IVE154	VALANCE PANEL LH	504036808
IVE154	VALANCE PANEL LH	504096163
IVE155	SIDE SPOILER RH	504065985
IVE156	CENTRAL SPOILER RH	504065982
IVE157	CENTRAL SPOILER LH	504074676
IVE158	SIDE SPOILER LH	504065984
IVE159	FOOTBOARD RH	42553998
IVE160	FOOTBOARD LH	42553997
IVE161	UPPER PLATE RH	504001361
IVE163	LOWER PLATE RH	504001345
IVE164	LOWER PLATE LH	504001344
IVE165	MUDGUARD RH	500375473
IVE166	MUDGUARD LH	500375472
IVE167	DOOR EXTENSION RH	504029044
IVE167	DOOR EXTENSION RH	504044980

Bison Ref	Description	Cross Ref
IVE168	DOOR EXTENSION LH	504029045
IVE168	DOOR EXTENSION LH	504044981
IVE171	FRONT BUMPER STRALIS	500383947
IVE172	FRONT GRILL STRALIS 530 AT-AD	504056436
IVE173	FRONT CORNER PANEL RH 530 AT-AD	504056033
IVE174	FRONT CORNER PANEL LH 530 AT-AD	504056034
IVE175	HEADLIGHT RH	504020189
IVE176	HEADLIGHT LH	504020193
IVE177	CORNER LAMP LH	42555022
IVE178	CORNER LAMP LH	42555023
IVE183	CORNER LAMP RH	41221039
IVE183	CORNER LAMP RH	504098243
IVE184	CORNER LAMP RH	41221029
IVE184	CORNER LAMP RH	504098245
IVE185	INDICATOR RH	42555041
IVE186	INDICATOR LH	42555042
IVE187	FOGLAMP RH & LH	504181095
IVE188	SPOTLAMP RH & LH	504181096
IVE189	REAR MUDGUARD FLAT TOP - RH & LH	41213751
IVE190	REAR MUDGUARD TOP - RH & LH	4121375
IVE190	REAR MUDGUARD TOP - RH & LH	41298979
IVE191	REAR MUDGUARD RH & LH REAR PART (LONG)	41213754
IVE192	REAR MUDGUARD RH & LH REAR PART (SHORT)	41213753
IVE193	DROP WING RH	504090861
IVE194	DROP WING LH	504090862
IVE195	WING STAY	41213731
IVE196	WING STAY	41213729
IVE197	WING STAY	41213727
IVE198	WING STAY	41213725

Bison Ref	Description	Cross Ref
IVE199	CENTRE SPOILER	504190747
IVE200	CORNER SPOILER - RH	504190780
IVE201	CORNER SPOILER - LH	504190781
IVE202	FRONT BUMPER - WHITE	504284316
IVE203	FRONT BUMPER - BLACK	504284316
IVE204	CENTRE COVER	504187294
IVE205	COVER	504187339
IVE206	UPPER COVER - RH	504187426
IVE207	UPPER COVER - LH	504187427
IVE208	SIDE COVER - RH	504187507
IVE209	SIDE COVER - LH	504187507
IVE210	UPPER BUMPER STEP	504194669
IVE211	LOWER BUMPER STEP	504135514
IVE212	COVER SPOT & FOG LAMP BEZEL RH	504187939
IVE213	COVER SPOT & FOG LAMP BEZEL LH	504187940
IVE214	FOG LAMP BRAGET RH	504173478
IVE215	FOG LAMP BRAGET LH	504173477
IVE216	BUMPER - WHITE	504284315
IVE216	BUMPER - WHITE	504287143
IVE217	BUMPER - BLACK	504284315
IVE217	BUMPER - BLACK	504287143
IVE218	GRILL	504170848
IVE222	UPPER STEP PANEL	8144393
IVE222	UPPER STEP PANEL	98442028
IVE223	UPPER STEP PANEL	8144394
IVE223	UPPER STEP PANEL	98442029
IVE224	RH LATERAL SUPPORT	98405560
IVE225	LH LATERAL SUPPORT	98405561
IVE226	H4 HEADLIGHT *C/W LOAD LEVELLING RH	98460047

Bison Ref	Description	Cross Ref
IVE227	H4 HEADLIGHT *C/W LOAD LEVELLING RH	98460048
IVE227	H4 HEADLIGHT *C/W LOAD LEVELLING RH	500305107
IVE230	GRILL MESH	8143752
IVE231	GRILL MESH	8142429
IVE232	VALANCE PANEL LOWER INFILL - RH	504065981
IVE233	VALANCE PANEL LOWER INFILL - LH	504065980
IVE234	FRONT MUDGUARD RH LONG CAB 530 AT-AD	504047584
IVE235	FRONT MUDGUARD LH LONG CAB 530 AT-AD	504047583
IVE236	FRONT MUDGUARD RH SHORT CAB 530 AT-AD	504047586
IVE237	FRONT MUDGUARD LH SHORT CAB 530 AT-AD	504047585
IVE238	STEP PLATE	504047659
IVE239	STEP PLATE	504047660
IVE242	FRONT PROTECTION RH	504003993
IVE243	FRONT PROTECTION LH	504003992
IVE244	SPOT LAMP	504032148
IVE245	FOG LAMP	504032145
IVE248	HEADLIGHT LH	500307757
IVE249	HEADLIGHT RH	500307756
IVE250	WING REPEATER LAMP - L50MM	4862220
IVE250	WING REPEATER LAMP - L50MM	500316547
IVE250	WING REPEATER LAMP - L50MM	500316551
IVE251	WING REPEATER LAMP - L133MM	99452662
IVE252	INDICATOR LIGHT - RH	98419235
IVE253	INDICATOR LIGHT - LH	98419234
IVE254	INDICATOR LIGHT - RH	500368110
IVE255	INDICATOR LIGHT - LH	500368111
IVE256	INDICATOR LIGHT - RH	500328136
IVE257	INDICATOR LIGHT - LH	500328137
IVE258	COMPLETE REAR LAMP - RH & LH	99463243

Bison Ref	Description	Cross Ref
IVE258	COMPLETE REAR LAMP - RH & LH	99463243
IVE258	COMPLETE REAR LAMP - RH & LH	99463243
IVE258	COMPLETE REAR LAMP - RH & LH	99463243
IVE260	REAR LIGHT - RH *VERTICAL	500319555
IVE261	REAR LIGHT - LH *VERTICAL	500319556

CAN'T FIND WHAT YOU ARE LOOKING FOR?

PLEASE GIVE US A CALL AS WE ARE ADDING
TO OUR RANGE ALL THE TIME.

OR WE CAN GET ITEMS AS A SPECIAL
REQUEST AT COMPETITIVE PRICES.

Company Address:
Bison Parts
C/O Fleet Services
Sheffield
S9 5EU

TEL: 07792813409

EMAIL: sales@bisonparts.co.uk

WWW: www.bisonparts.co.uk

