

QUANTUS

SHAMPOO - WÄSCHE



QUANTUS  
Automatic Roll-Over  
Wash Unit

**Christ**  
WASH SYSTEMS





**QUANTUS –  
High-performance in  
the tightest space**

This high performance unit enables maximum wash capacity without requiring extra large spaces, laying a sound foundation for a profit making wash business.

New technologies in combination with tried and true components and a striking design enhance the attractiveness of this modern roll-over wash unit.

The wash and drying devices have also been designed with the newest technologies, which guarantee maximum wash capacity and top results.





Well defined accessories broaden program variations, which create profitable additional business.

High-grade materials, best workmanship and low maintenance components are the best insurance for a long and successful machine life.

An extensive array of accessories broadens the amount of program combinations possible, which create profitable additional business.

Changes in construction and design are reserved.  
Pictures may contain equipment only available at a surcharge.

# Small Stage - Big Show

## Christ QUANTUS

The NEW wash experience:  
High-pressure, wash, dry ... finished!

Fast wash times reduce queuing times and increase profits.

Christ's QUANTUS can be installed in any standard hall starting at hall lengths of 9.30 mtr..

This opens new perspectives for your wash business.

The new 5-brush wash unit concept performs a high-pressure pre-wash, the brush wash and the drying in just one forward and one return cycle, saving valuable time in the process.

If time is at a push - in just 2 1/2 minutes,.

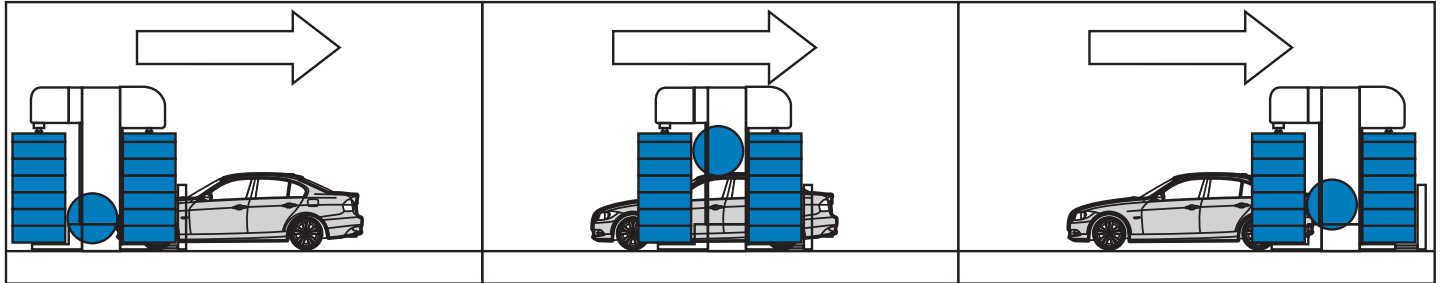
**New dimensions are opened with the QUANTUS!**



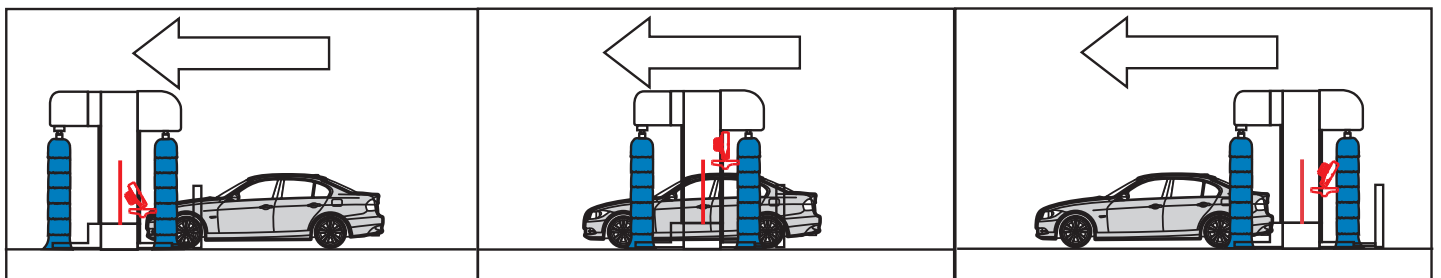


# Program: Wash & Dry

## Forward cycle: Wash



## Return cycle: Dry



### This is how the Quantus works:

#### The forward cycle:

4 Side cylinders and 1 roof cylinder move contour-following, electronically controlled over the vehicle. One of the two side cylinder pairs alternatively carries out the centre cross-over wash on the vehicle's front and rear. Should a high-pressure pre-wash and a wheel wash be optionally selected, these programs are carried out simultaneously.

#### The return cycle:

Vehicle drying already starts on the way back. The drying device is comprised of 4 blowers, which powerfully dry the entire vehicle's surface.

The vehicle stands in short ready to exit.



# Vehicle drying



## Pivoting roof blower

This Christ technique has been successfully employed for over 15 years. Photo-cell controlled jets are angled for optimized drying of front and rear surfaces.

## Intelligent scanning:

An upgrade to this application is now newly available with **Opti-air**.

This new technology enables the angle of the drying jet to continuously adjust to the carbody's shape and thereby achieve top drying results on all vehicle contours.





### User friendly

Controls and chemical storage/dosage units are installed in the portal side beams. Easy access is guaranteed by rear entrance.

### Unit control

User-friendly rear allocation also includes the electronic SPC-control for the fine control of all unit functions.

A fault diagnosis system monitors all vital components.

Frequency controlled electro motors ensure variable and gentle movement of the traction and lifting drives.



### Wash agent control

All water circuits are controlled from this device.

Individual dosing pumps with stroke and frequency control ensure exact and economical wash agent dosing. The product containers are serially equipped with fill level monitoring.



### Service terminal

#### Type UBT-S

Modern alu-casing for wall installation with cover for protection against attempts of vandalism. An additional support post can be ordered for floor-mounting at a height of 1,30 mtr. Control panel with LEDs. Front plate with plastic foil keyboard, clear text display, start button and emergency-off device. The multifunctional keyboard serves for program or code input by the users, as well as, special programming purposes by the operator.

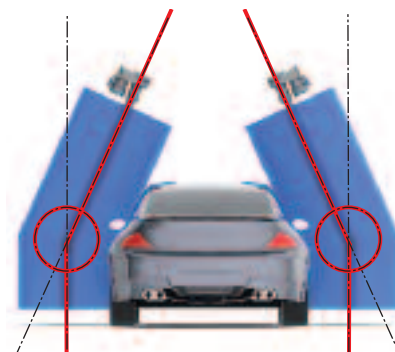


# Christ's jointed brush device adapts perfectly to every carbody design



The tried and true jointed brush device only available at Christ AG awards vehicles with the best wash results during the forward and return cycle. Evenly applied pressure and optimum identification of the vehicle's contours guarantee gentle cleaning.

In addition to the technical advantages, the angled form wins over customers with its appearance and is positively perceived as a special feature by the wash customer.







### Illuminated guide rails

Guide rails simplify entrance into the wash hall. The blinking LEDs enhance the visibility of the guide rails and safely direct the driver in front of the wash unit.



### Positioning device

Controlled by photocells, a LED display indicating FORWARD-STOP-REVERSE directs the driver to the correct position in front of the wash unit.



### Rim spray device

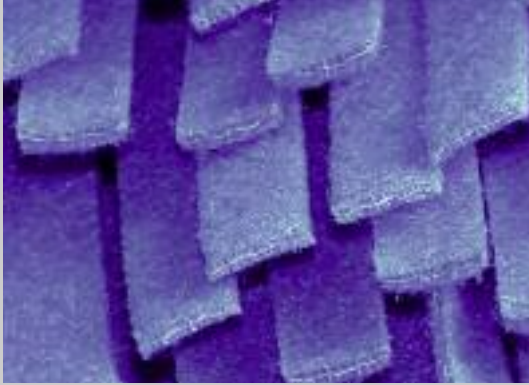
Dirt in rims is efficiently loosened, preparing for a perfect, subsequent wheel and rim wash wheel wash.



### Wheel washing device

Manufactured of stainless steel. Stable linear guidance of the irrigated 21" wheel wash brush. Top cleaning performance by means of a pulsating brush motion and a brush rotation direction change. Wheel recognition by means of photocell scanning.

## Exclusive Wash Material



### Sensotex+

Wash material made from textile.

- Increased longevity
- Highest cleaning performance
- No form of material abrasion on the vehicle's paint finish
- Highest vehicle gloss finish
- May be advertised as "Textile Car Wash"



### Sensofil+

Wash material made from foamed polyethylene.

- Increased longevity
- High cleaning performance
- Minimal material abrasion on the vehicle's paint finish
- High vehicle gloss finish

Especially designed for washing new vehicles.

## The pre-wash -



### Active foam device

Tough dirt is effectively loosened from the vehicle before the brush wash. The bubbling foam bath is a visual eye catcher and significantly improves wash results - additional advantages for any unit operator.





## the foundation for a clean vehicle



### High-pressure pre-wash

The high-pressure wash is carried out during the brush wash without an additional working cycle. Located at the forward side of the wash unit, the high pressure jets work with 50 bar pressure, covering the vehicle's surface in an  $25^\circ$  oscillating movement. The two assemblies are motor driven and operate with four  $0^\circ$  jets each, spraying the vehicle's roof and sides.



**Extras make a good thing even better...**



### **Moving program display**

Attracts extra customer's attention.

Displays operating instructions, the selected program, and program steps and advertisement texts during pauses between the wash operations.



HEISS - WACHS

HOCHDRUCKWÄSCHE

✂ TROCKNEN ✂

BITTE AUSFAHREN

ANLAGE FREI

### **Communication with the wash customer**

The moving LED display from Christ is equipped with more than 2400 single, extra bright LEDs. The large display shows texts and effects in 100 stored variations. The integrated language code offers a selection of 16 different languages.

In addition to the standard colour orange, the moving LED display is optionally available in blue.





# Accessories for increased return and profitability

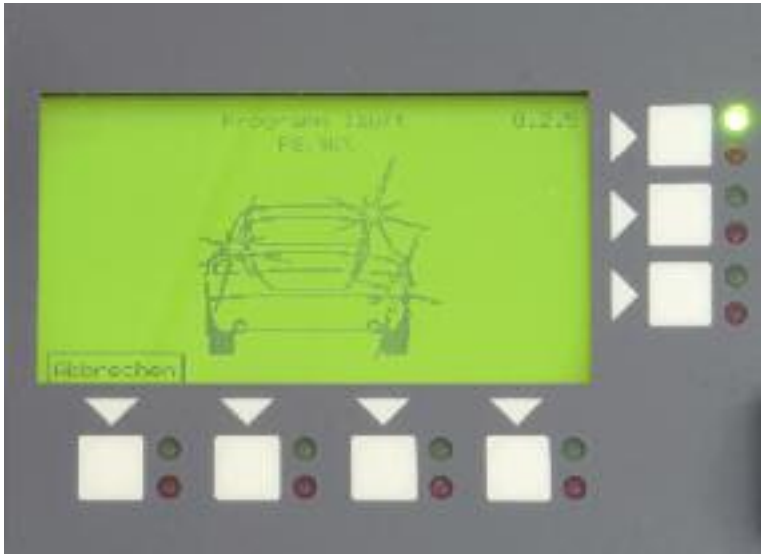


### Wax device

During a separate work cycle, wax is applied to the vehicle paint surface. Large-scale water sheeting for supporting the drying process and lasting conservation ensure a higher gloss effect.

This care program promotes preservation of vehicle value and increases the variety of operator's wash menus.

# WACHSVERSIEGELUNG



## Under-chassis wash at 85 bar high-pressure

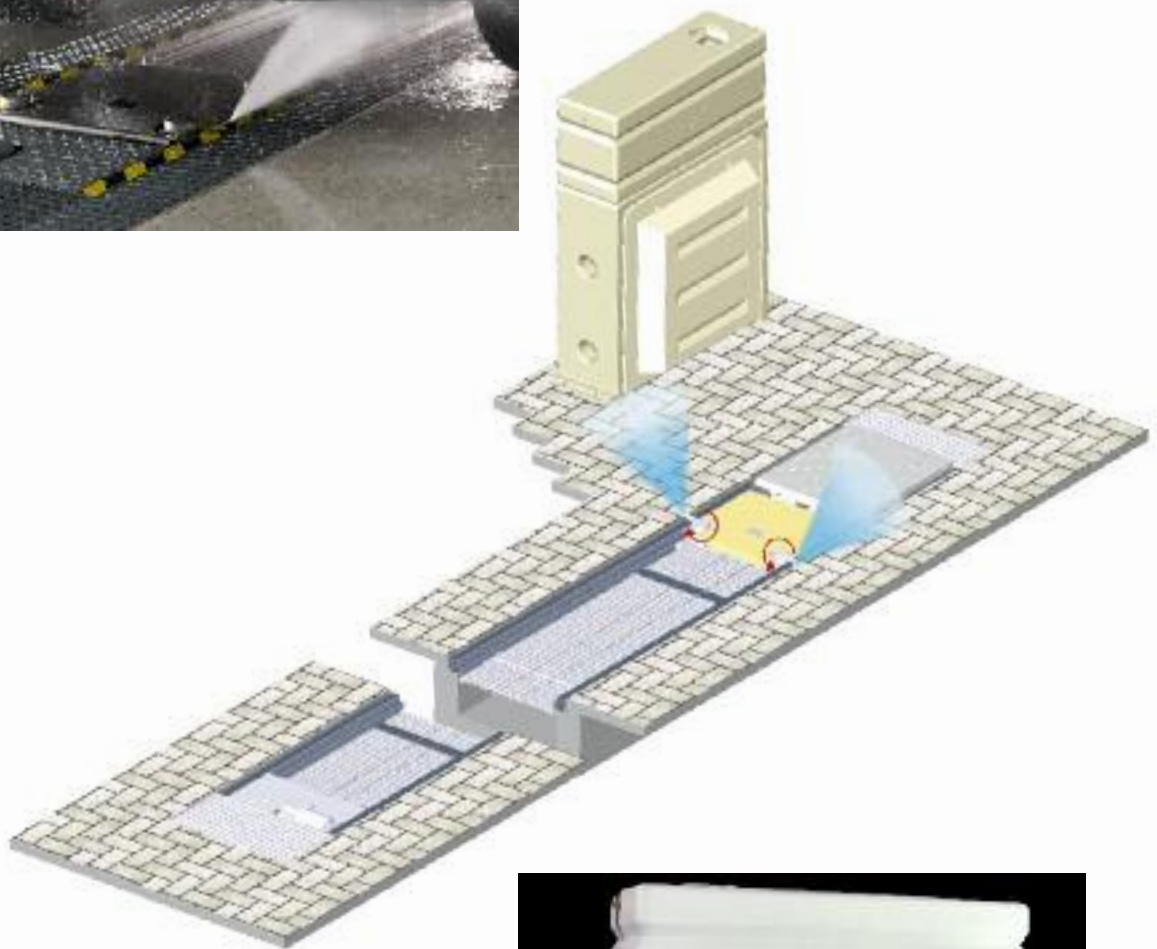


### Under-chassis wash

A mobile carriage moves the 2 high-pressure jets underneath the vehicles in a continuous rotation movement.

This ensures perfect coverage of the entire under-chassis by the two 85 bar spray jets.

The system is designed for either above ground or below ground installation.



### Pump cabinet with storage container

This space-saving cabinet, completely made of plastic, fits in any adjoining room or directly in the wash hall. The storage tank, situated directly on top of the cabinet, functions as a fresh water separator. The closed cabinet can accept 1 or 2 high-pressure pump devices, which feed the side high-pressure wash and selectively the under-chassis wash.





### Ticket terminal

A desk device for the cashier area for ticket printing through wash program input. Integrated shift calculation. Wash program activation by inputting the ticket number through the electronic key-board on the access terminal located outside of the wash bay. A data cable line to the portal wash unit can also be selected for usage of further functions.



### Wash code number

The customer receives an imprinted code on the wash ticket. This 6-digit number identifies the purchased wash program. The code is generated over an integrated random generator. The wash ticket functions simultaneously as a receipt for the program bought. This receipt can also be imprinted with station related advertising.

### Service Terminal Model UBT-L

This floor-mounted appliance in alu-modular design allows for further fitting possibilities in addition to its integrated serial equipment. For example, an optional magnet card reader, coin/token receiver, barcode reader and an intercom system can be installed below the control panel.

### Program – Indication

Each service terminal can be additionally equipped with LED-pictograms above the keyboard. Six, eight or nine fields can be illuminated as selected. In addition to the program steps being displayed, the pointers "unit free" and "please exit" are also indicated. This equipment upgrade is especially ideal for closed hall doors in order to increase transparency.



# Everything from one hand from Christ's wash factory



## Our assortment:

- Rollover wash units
- Wash tunnels
- Water recycling units
- Self-service wash systems
- Truck wash units
- Special units
- Self-service vacuum cleaners
- Advertising material and accessories for car washing
- Car wash and care products



## Our services:

- Limited site analysis
- Profitability calculation
- Projection assistance
- Operator trainings
- Financing concepts
- Marketing assistance

Our area-wide service network  
guarantees fast help.



**Christ**  
WASH SYSTEMS

**Otto Christ AG**  
**Wash Systems**

P. O. Box 1254

D-87682 Memmingen

Tel. +49 (0) 83 31/857-0

Fax +49 (0) 83 31/857-249

www.christ-ag.com

export@christ-ag.com