



**Committed to Excellence**

**Fabrication, Welding and Mechanical  
Engineering Specialists**

**Providing Engineering Solutions For  
Construction, Food, Manufacturing, Power  
Generation, Water and Waste Water Industries  
Since 1982**

Cobra Engineering, assisting and supporting:

- **Bulk Materials Handling**
- **Civil Engineering**
- **Construction**
- **Food Production**
- **Food Processing**
- **Manufacturing**
- **Packing**
- **Power Generation**
- **Water Management**
- **Water Treatment**



With innovative design, quality manufacturing and cost efficient solutions since 1982



## Bulk Materials Handling

From aggregates to vegetables, Cobra Engineering will design, manufacture, maintain or repair your:

- Auger
- Bag Filler
- Belt Conveyor
- Box Tipper
- Bucket Conveyor
- Chain Conveyor
- Chutes
- Drag Conveyor
- Elevator
- Palletiser
- Powder Hopper



- Pressure Delivery Pipework
- Roller Conveyor
- Slurry Tank
- Storage Vessel

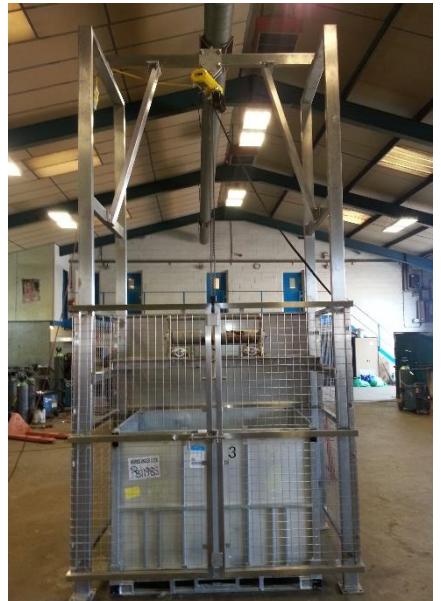
Designed on Solid Works to meet your exact requirements. Mild steel and stainless steel items are manufactured in separate dedicated workshops to avoid ferritic contamination. With supply only or supply and install options you have the freedom to specify the best option for your business.

Cobra Engineering have been manufacturing and maintaining materials handling solutions since 1982. By utilising our own directly employed engineers to design, manufacture and install, you benefit from a high quality product plus some of the best manufacturing lead-times in the industry. Typical applications include:

- **Aggregates and Cement**
- **Chemicals**
- **Cold Storage**
- **Fruit**
- **Grain**
- **Pastes and Purees**
- **Recycling**
- **Root Vegetables**
- **Seeds**
- **Warehouse and Distribution**
- **Waste Disposal**



Irrespective of your bulk materials handling challenge, Cobra Engineering will have a cost effective solution.



## Civil Engineering Steelwork

From a waterfront safety rail to a retail development, Cobra Engineering will manufacture your steelwork requirements:

- **Access Control**
- **Balustrades**
- **Barriers**
- **Bollards**
- **Cat Ladder**
- **Crash Protection**
- **Debris Screen**
- **Elevated Walkway**
- **Guard Rails**
- **Hand Rails**
- **Landing Platform**



- **Mooring Bollards**
- **Shopping Trolley Park**
- **Vehicle Access**
- **Viewing Platform**

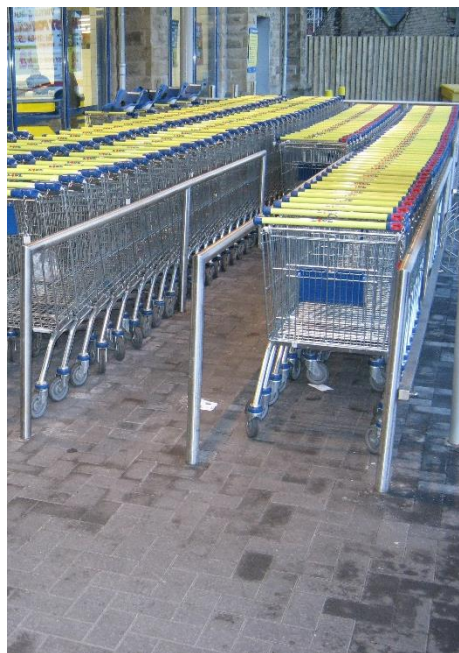
Designed in-house by our engineers or manufactured to your own drawings, you are assured of a high quality solution delivered on time and on budget. Supply only or supply and fit to provide you with your ideal option.

Established in 1982 Cobra Engineering have provided secondary steelwork for a number of Civil Engineering companies. Accredited to EN 1090 we manufacture CE marked fabrications to comply with current legislation. Current and past projects include:

- **Car Park**
- **Marina**
- **High Street Development**
- **Industrial Development**
- **Leisure Centre**
- **Recycling Facility**
- **Retail Park**
- **Supermarket**
- **Sports Complex**
- **Waterfront Development**



Innovative design and quality manufacture.



## Structural Secondary Steelwork

### EN 1090 CE

From a utility balustrade to a full mezzanine floor, Cobra Engineering will design, manufacture and install to your specification:

- Access Platforms
- Balustrades
- Canopies
- Cat Ladders
- Door Security
- Elevated Walkways
- Emergency Escape Routes
- Handrails
- Juliet Balconies
- Lifting Beams
- Mezzanine Floors
- Smoking Shelters



- Staircases
- Viewing Platforms
- Window Security

Stainless steel and mild steel options to suit your exact requirements. Designed and manufactured by our own engineers, or manufactured to your exact design. Supply only or supply and fit to provide you with maximum flexibility in your build programme.

Having been a manufacturer and supplier of fabricated steelwork to the construction industry since 1982. Cobra Engineering offer you a high quality solution to your steelwork projects including:

- **Airport Buildings**
- **Care Homes**
- **Cinemas**
- **Factories**
- **Leisure Centres**
- **Libraries**
- **Private Dwellings**
- **Retail Premises**
- **Schools**
- **Stations**
- **Swimming Pools**



Cost effective design, manufacture and installation for every project.





## Food Processing & Production

With decades of experience within the food production sector, Cobra Engineering design, manufacture and repair:

- Access Platforms
- Augers
- Box Tippers
- Chutes
- Conveyors
- Drains
- Door Protection
- Elevators
- Food Safe Fabrications
- Hoppers
- Kerbs
- Mezzanine Floors
- Pipework



- Stainless Steel Fabrications
- Tanks
- Vegetable Graders
- Vessels
- Wash-down Stations

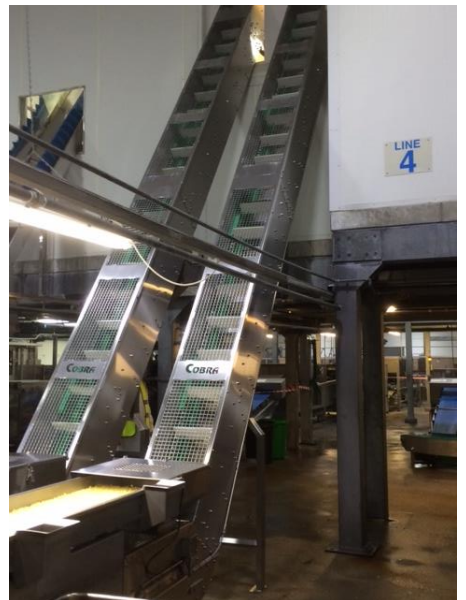
All requirements are fully project managed and scheduled to meet your production demands, including nightshifts and weekend working when appropriate.

The Cobra Engineering expertise provides you with a single source solution, whatever your requirement. Because we design, manufacture and install you can be confident of an outstanding quality result. There is Cobra equipment installed in almost all food related applications including:

- **Baking**
- **Brewing**
- **Bottling**
- **Canning**
- **Confectionary**
- **Convenience Foods**
- **Freezing**
- **Fruit Processing**
- **Meat Processing**
- **Prepared Meals**
- **Snacks**
- **Vegetable Packing**



From a simple inspection table to a full processing line Cobra Engineering have the solution.



## **Manufacturing Industry**

When you have a challenge within your manufacturing facility, Cobra Engineering will have a solution. Having supported manufacturing since 1982 allows us to offer you cost effective solutions for:

- **Access Platforms**
- **Breakdown Cover**
- **Conveyors**
- **Door Protection (goal post)**
- **Fabrication Services**
- **Inspection Gantries**
- **Loading/Unloading Ramps**
- **Mechanical Maintenance**
- **Machined Components**
- **Mezzanine Floors**
- **Pipework**
- **Safety Guards**



- **Shift Cover**
- **Vehicle Restriction Barriers**
- **Welding Services**

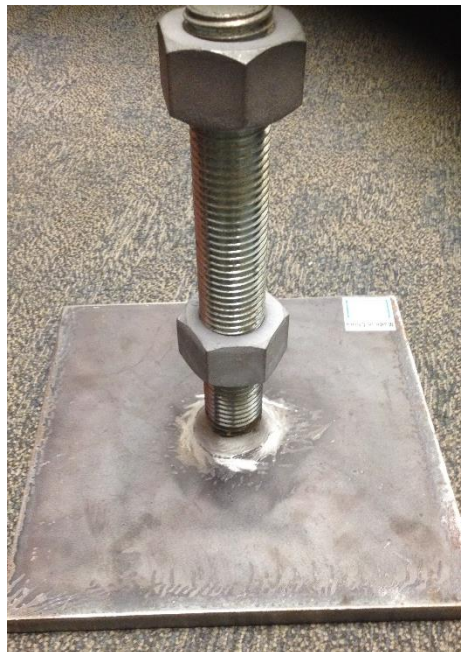
With shift patterns arranged to suit your production requirements. As a single source solution for design, build, install and repair, Cobra provide your ideal solution for breakdown, routine maintenance and renewal programmes.

Since its founding in 1982 Cobra Engineering has supported a wide range of manufacturing industries. By providing skilled fabricators, welders and mechanical fitters our custom base has continually grown. We design, build and maintain plant and equipment for manufacturing industries including:

- **Aggregates**
- **Cans**
- **Capital Equipment**
- **Cement**
- **Chemicals**
- **Cosmetics**
- **Packaging**
- **Pharmaceuticals**
- **Plastics**
- **Recycling**
- **Waste Disposal**



For your repair, renewal or replacement demands Cobra Engineering provide your solution.



## Packing

From chemicals to vegetables, Cobra Engineering will design and manufacture an appropriate solution to suit your process including:

- Bulk Tanks
- Box Tippers
- Chutes
- Conveyors
- Elevators
- Graders
- Hoppers
- Manual Packing Stations
- Palletisers/De-palletisers
- Pallet Stackers
- Pipework



- Powder Hoppers
- Pressure Vessels
- Rotary Tables
- Workstations

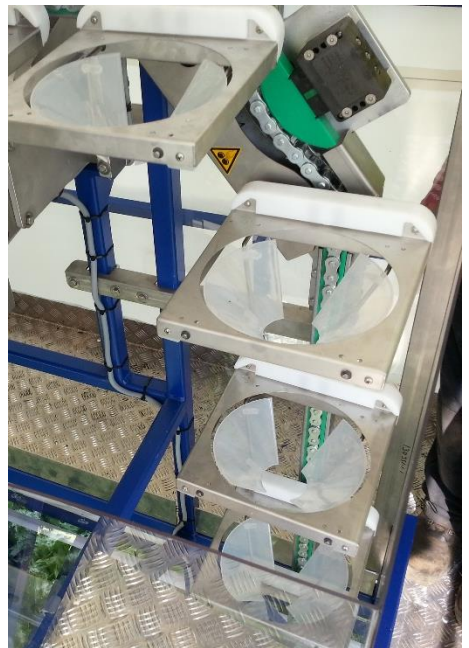
Cobra have expertise and experience to design, manufacture and maintain complete packing systems, ensuring your finished product is efficiently processed and ready for despatch.

By engineering the design to best suit your application Cobra Engineering will provide you with an efficient and cost effective packing system. From a manual packing station to an automated line, mobile or static. Typical applications include:

- **Bagging**
- **Bottling**
- **Bulk Packaging**
- **Canning**
- **Film Wrapping**
- **Freezing**
- **Manual Packing**
- **Palletising**
- **Pouch Filling**
- **Tray Filling**



Cobra Engineering have a solution to your packing challenges.



## **Power Generation**

Operating within the biomass, fossil fuel and renewable sectors Cobra Engineering support UK power generation at multiple sites. Our comprehensive services will assist you with:

- **Access Platforms**
- **Barriers**
- **Bollards**
- **Breakdown Cover**
- **Elevated Walkways**
- **Emergency Escape Routes**
- **Hatches**
- **Lifting Beams**
- **Machining**
- **Outage Assistance**
- **Pipework**
- **Safety Gates**



- **Secure Compounds**
- **Shift Cover**
- **Site Access Control**
- **Steps**

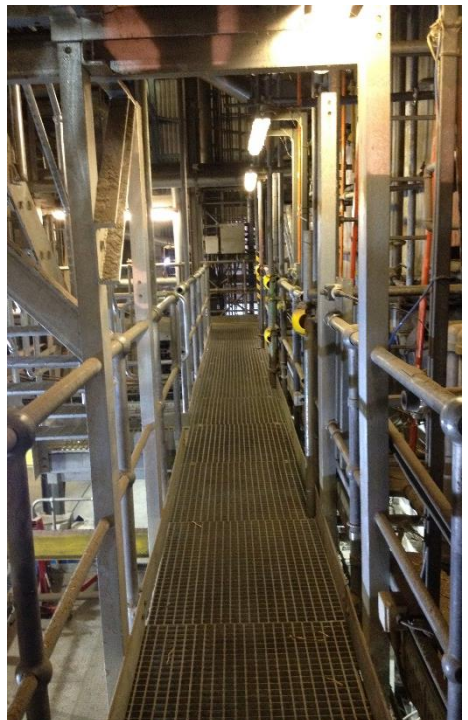
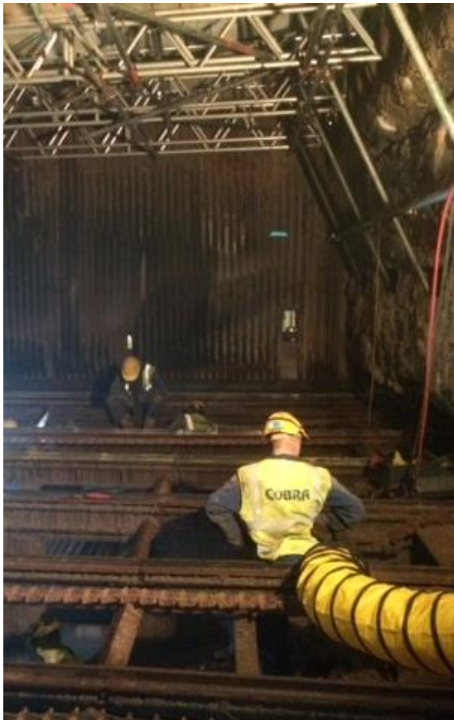
With skilled engineers fully trained to your site requirements and shift patterns to suit, Cobra Engineering offer a valuable addition to your “toolbox”

Cobra Engineering boast a broad skill base, allowing us to select the ideal engineers for your requirements. From CE marked structural fabrications to skilled engineers, qualified to work in confined spaces for contracts including:

- **Biogas Installations**
- **Coded Welders**
- **Confined Space Working**
- **Power Stations**
- **Super Heaters**
- **Turbine Removal**
- **Welding Services**
- **Wind Farms**
- **Working At Height**



Cobra supply your solution for fabrication, machining and skilled labour requirements within the power generation industry.





## Water Management (IDB's)

Extensive experience working with Internal Drainage Boards allows Cobra Engineering to offer you a steelwork solution for:

- Barriers
- Cat Ladders
- Eel/Elver Passes
- Gravity Sluice Gates
- Landing Platforms
- Machining
- Mooring Bollards
- Pipework
- Platforms
- Roller Tidal Doors
- Site Access Control
- Sluice Gates



- Stop Logs
- Tidal Flaps
- Weed Screens
- Weir Plates

By working closely with your engineering departments, Cobra ensure a cost effective high quality solution to your ongoing repair and replacement programmes.

By choosing Cobra Engineerig you ensure a high quality cost effective result to your steelwork challenges. Experience as a prime contractor on complex projects allows us to offer you the ideal solution for:

- Dams
- Gantries (Screen Cleaner)
- Lock Gates
- Navigation Channels
- Penstocks
- Pumping Stations
- Sluices
- Steel Stop Logs
- Temporary Access
- Weirs



Cobra have the expertise and experience to assist with your ongoing repair and replacement programmes.



## Water Treatment

From working with water companies and waste water treatment specialists Cobra Engineering have the expertise to design and manufacture your fabrication requirements including:

- Access Restrictions
- Baffle Plates
- Bollards and Barriers
- Cat Ladders
- Debris Screens
- Elevated Walkways
- Filter Screens
- Handrails
- Pipework
- Platforms
- Safety Barriers
- Scraper Bridges



- Steps
- Tanks
- Weir Plates
- Welding Services

By manufacturing to your exact specification and installation to suit your build programme, you are assured of on time and on budget completion from Cobra Engineering.

All structural (loadbearing) fabrications are manufactured under our accredited EN 1090 system and **CE** marked to comply with current EU legislation. Typical applications include:

- **Dosing Plant**
- **Effluent Storage**
- **Food Waste Water**
- **Industrial Waste Water**
- **Pumping Facilities**
- **Potable Water**
- **Waste Water Treatment**
- **Water Storage**
- **Water Treatment Works**



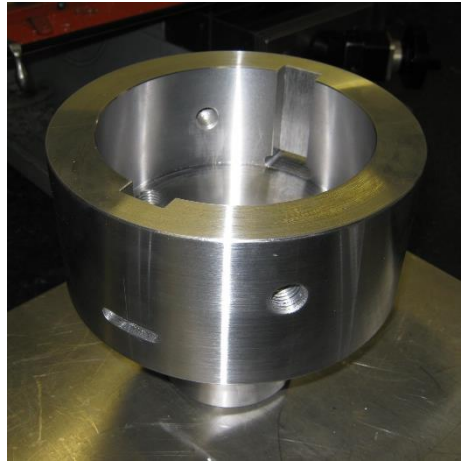
Cobra's expertise within the water and waste water industry gives us preferred supplier status with water authorities and main contractors.



## Machining

The Cobra machine shop specialises in quick turnaround single and small batch components. By adopting a conventional approach over full CNC programming provides a cost and lead-time advantage.

- Drilling
- Grinding
- Keyway Cutting
- Milling
- Spline Cutting
- Tapping
- Turning



Specialising in short lead-time projects allows us to offer you a viable solution to your breakdown and obsolescence challenges. In addition to supporting Cobra's fabrication activities the machine shop operates as a stand-alone facility, offering modification or renewal of existing components. When manufacturing drawings are unavailable we can in most cases offer a reverse engineering service to ensure your down time is kept to a minimum.





**Cobra Engineering (UK) Ltd**  
Redmoor Lane  
Wisbech  
Cambridgeshire  
PE14 0RN

**Tel: 01945 860578**

**Fax: 01945 860914**

**[info@cobra-engineering.co.uk](mailto:info@cobra-engineering.co.uk)**

**[www.cobra-engineering.co.uk](http://www.cobra-engineering.co.uk)**