

the
COLLECTION
unique exhibition equipment

2015





TWIST

exhibit in style

CURVE

flexible & affordable

CONNECT

simple & seamless

LUMOS

outshine & outclass

Contents



About Twist	1 - 2
Twist Original & Media	3 - 8
Twist Flexi-link	9 - 12
Accessories	13 - 18
Examples of Use	19 - 22



About Curve	23 - 24
Curve Banner System	25 - 26
Individual Items	27 - 28
Examples of Use	29 - 30



About Connect	31 - 32
Connect Banner System	33 - 34
Individual Items	35 - 36
Examples of Use	37 - 38



About Lumos	39 - 40
Lumos System	41 - 44
RGB Options	45 - 46
Individual Items	47



Twist[®]

The first and still the best.

Designed and manufactured in the UK with you in mind, this innovative product range continues to set a high benchmark within the exhibition industry. Twist is used by Harrods, Sainsbury's, Channel 4, BBC, V&A, NHS, Maserati, Mars, Vodafone, British Airways, LG, Saab, Boeing, BAE and many more.

From a single banner through to large modular stands, the Twist range has the ability and versatility to fulfill any number of exhibition and display requirements, proving that this UK designed and manufactured product is still one of the most flexible, portable, modular exhibition display systems in the world.

What is Twist?

Simply, it's a single banner stand or large graphical display. Twist is your ultimate, flexible display stand for exhibitions, conferences and POS, allowing you to create various configurations for any indoor event or space.



Twist Original & Media

More than just a banner stand.

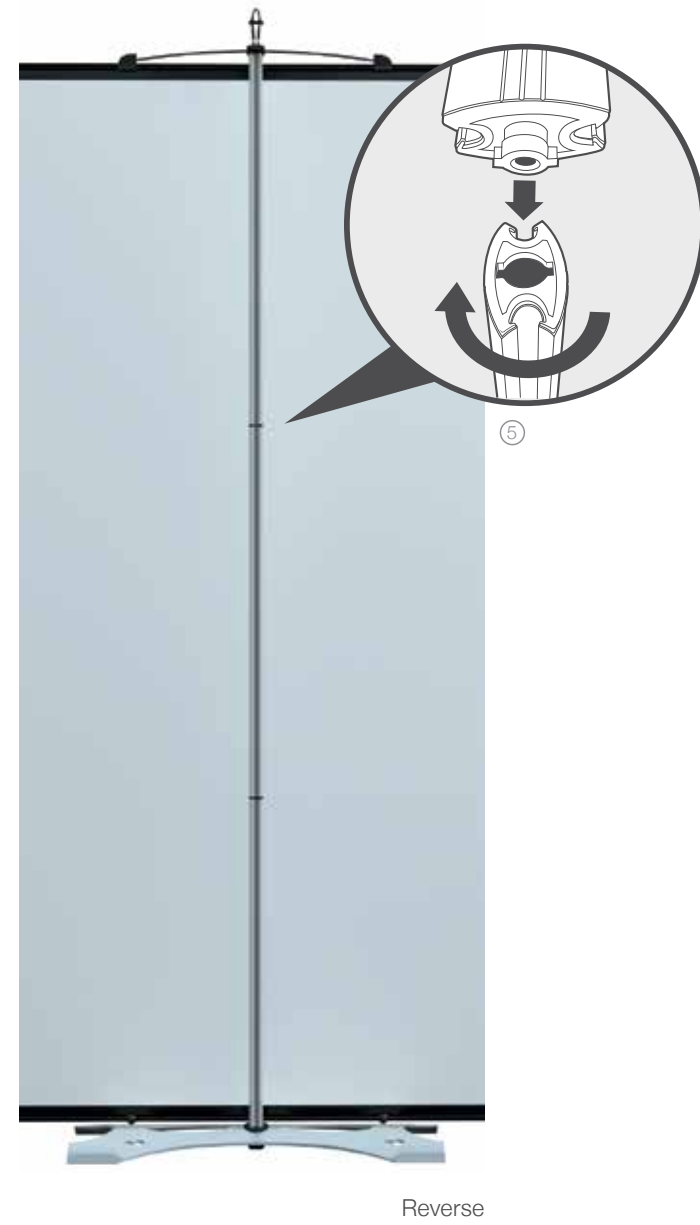
Extremely stable and simple to erect, the Twist Original is the foundation for the display range. Its versatility means that it can be configured to suit a wide variety of display requirements. Complementing the Twist range is the Twist Media, its revolutionary design enables a TFT or LCD/DVD player to be attached simply to a Twist stand using a standard VESA mounting.

Helping to make the Twist easy to use, is our unique patented tensioning system that holds the graphic taut, alleviating any problem with graphics curling at the edges. This also gives the Twist graphic the added benefit of independent levelling, helping banners to seamlessly link together on uneven or difficult floors (Easi-link kit required see page 14).

The dimensions of the stand is determined by the width and height of the graphic. This means that any width between 700mm and 1000mm can be used with just one set of Twist banner hardware; so you are in charge of what you purchase.

The Twist Original & Media come complete with an integrated low voltage LED light and either UK, US or EU transformer, as well as the ability to be single or double sided, i.e. graphics on the front and back.





Twist Original

1. Low voltage LED light
2. Patented tensioning system
3. Interchangeable graphic panel
4. 3mm powder coated steel base
5. Male and female Twist upright joining



Twist Media

1. VESA mounted screen brackets included [maximum screen weight 7.5kg]
2. Media foot
3. Locking pin for 3 part aluminium upright
4. VESA fitted plate to attached screen to upright bracket



1. Hardware bag
2. Graphic bag
3. Three part aluminium upright
4. Twist Media base in black



1. Integrated low voltage LED light
2. Twist Media VESA mount fitting kit
3. Twist Original base available in silver, white and black



Twist Flexi-link

Create and recreate seamless curved back walls.

Developed to make virtually any stand shape you require without having to change hardware or graphics, the Flexi-link is our most popular accessory for the Twist range.

Designed not only to look different when compared to other exhibition stands, the Flexi-link, when used in conjunction with the Twist Original or Media, offers greater flexibility for companies who may not always know what their future stand space requirements are going to be.

Varying heights and the ability to link an unlimited amount of both Twist Original and Media banners together, the Flexi-link panel offers the ability to create backdrops and exhibition displays that are not only unique and strong, but are also easy to assemble and transport.

With an unprecedented amount of flexibility from a portable and modular stand, the Flexi-link offers you a true return on investment; simply twist, bend and shape the stand to your needs. The days of being stuck with one stand configuration are finally at an end.





Twist 3 Panel Kit

1. Integrated low voltage LED light
2. Patented tensioning system
3. 550mm x 2000mm wide interchangeable Flexi-link graphic panel
4. 3mm powder coated steel base
5. Key hole location



Image shows Twist 3 Panel kit including Media upgrade and Twist Counter Accessory (see page 17 for more info)

Information for Twist 3 Panel Kit

- Available graphic widths: Straight: 700mm, 800mm, 900mm, 1000mm
 Curved: 550mm
- Available graphic heights: 2000mm, 2250mm, 2700mm
- Packed weight: 25kg (includes graphics at standard height)



Twist Accessories

Counters, shelves & everything else.

Whether it's a case conversion or shelf to display product, our accessory range is designed to meet the ever changing requirements to your exhibition display.

Twist Easi-link Kit

1. Easi-link Mag Bars
2. Dowel Pins



Twist Hardcase

1. Twist Double case conversion
2. Twist Single case conversion
3. Twist Hardcase open
4. Twist Double case counter top colour options
5. Twist Single case counter top colour options





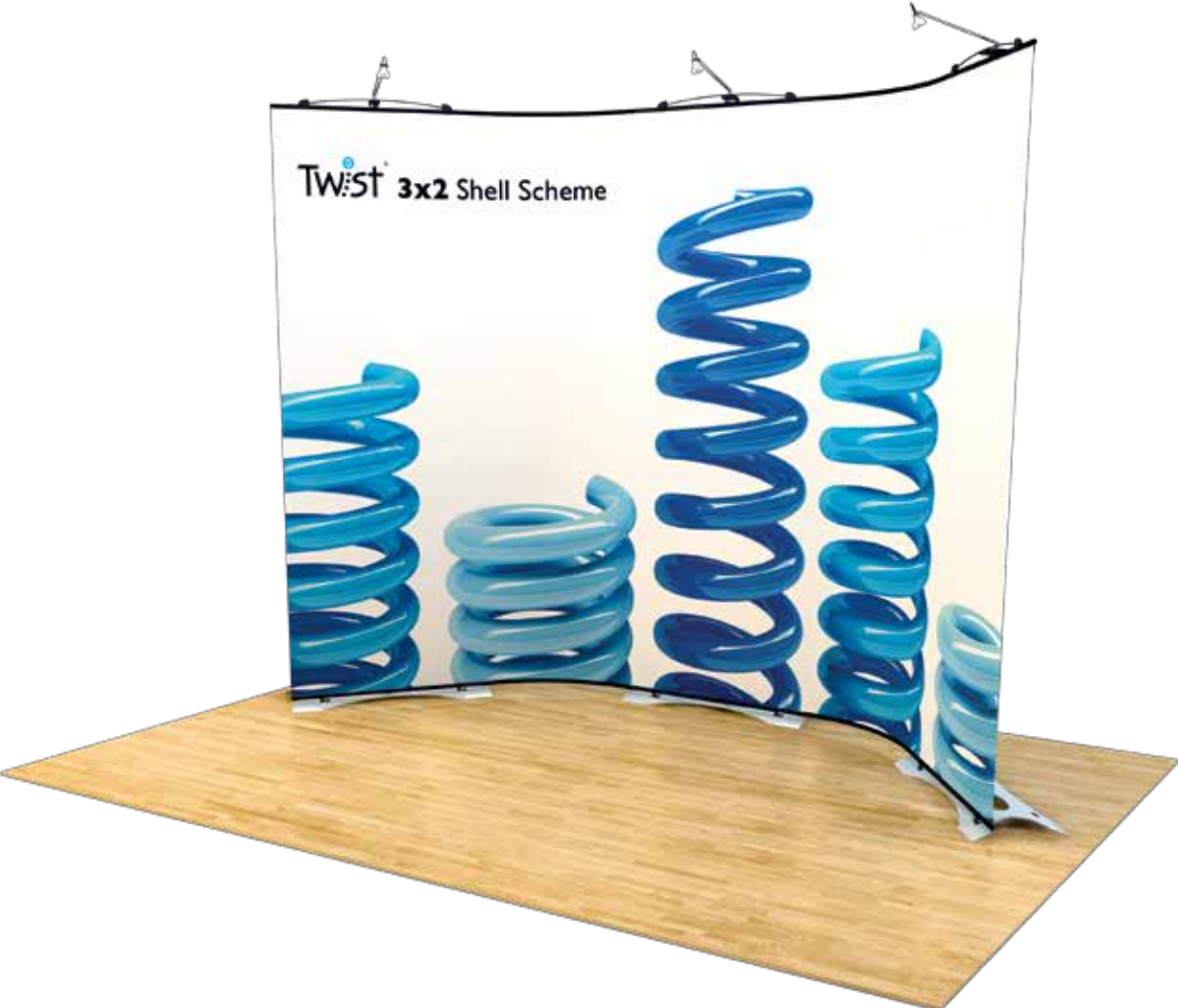
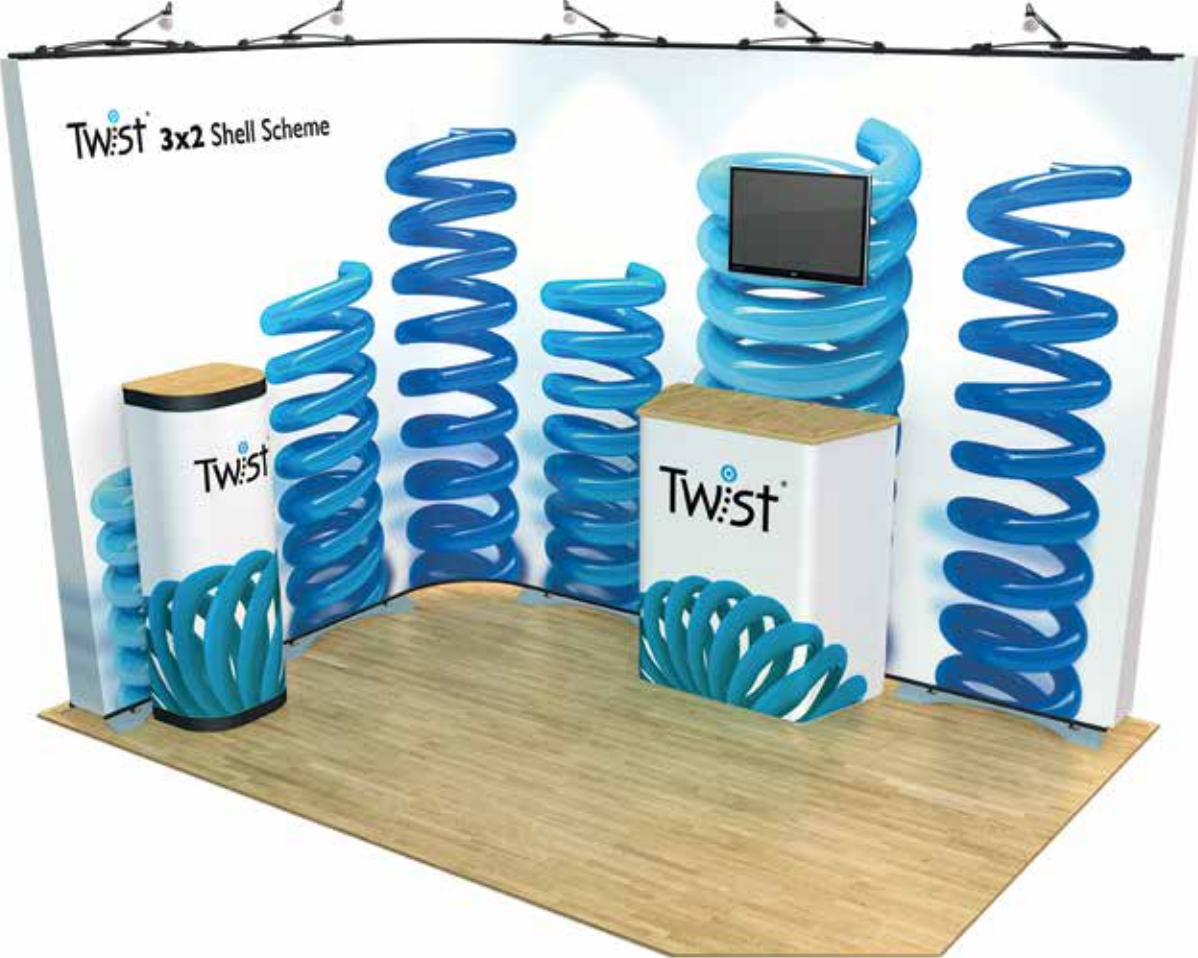
Twi:st Counter

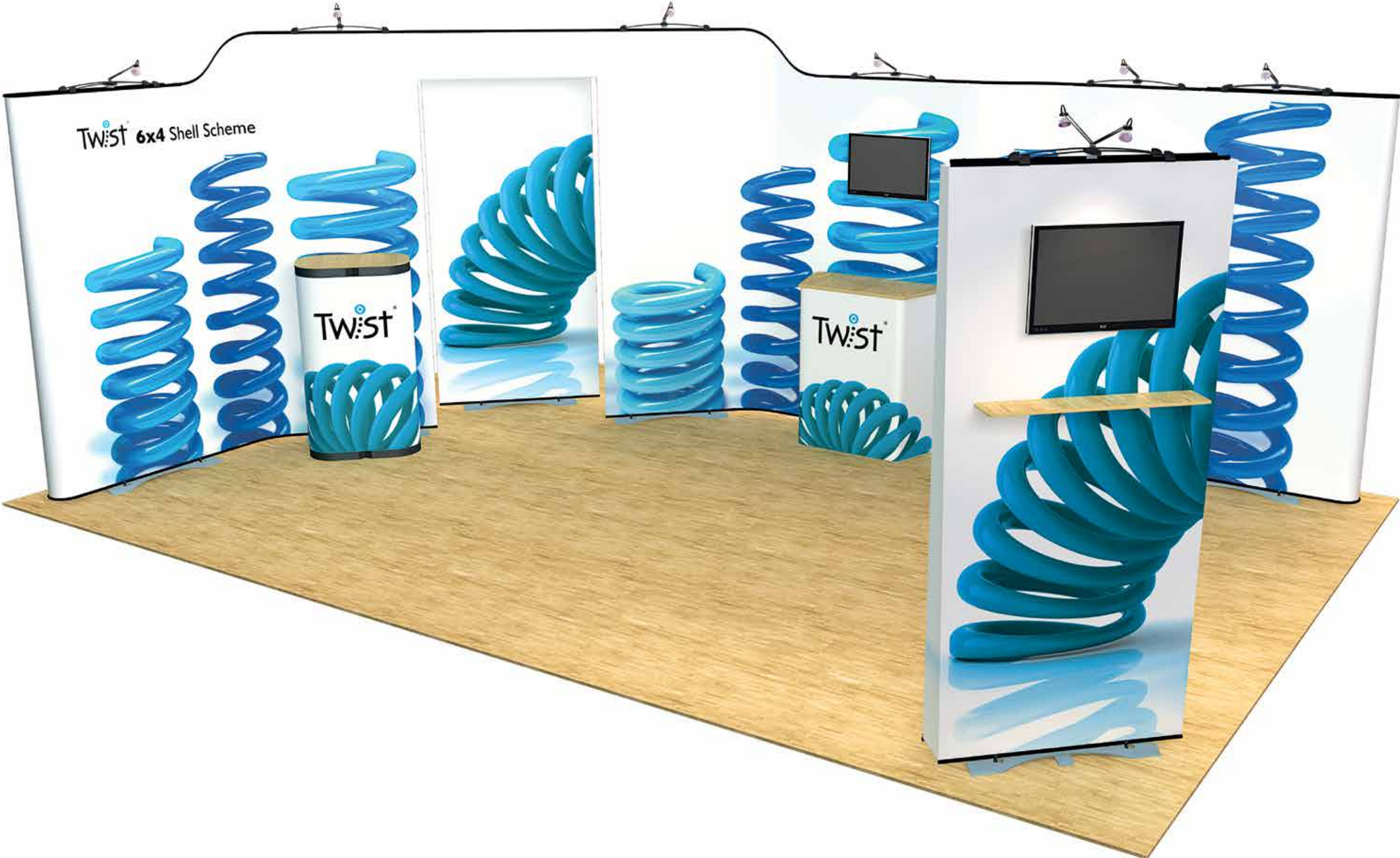
1. Twi:st Counter shown integrated with Twi:st Original
2. Counter hardware inclusive of 15mm thick counter top and optional 8mm thick shelf available measuring 800mm x 150mm
3. Counter with graphic wrap
4. Choice of beech, white or black counter tops

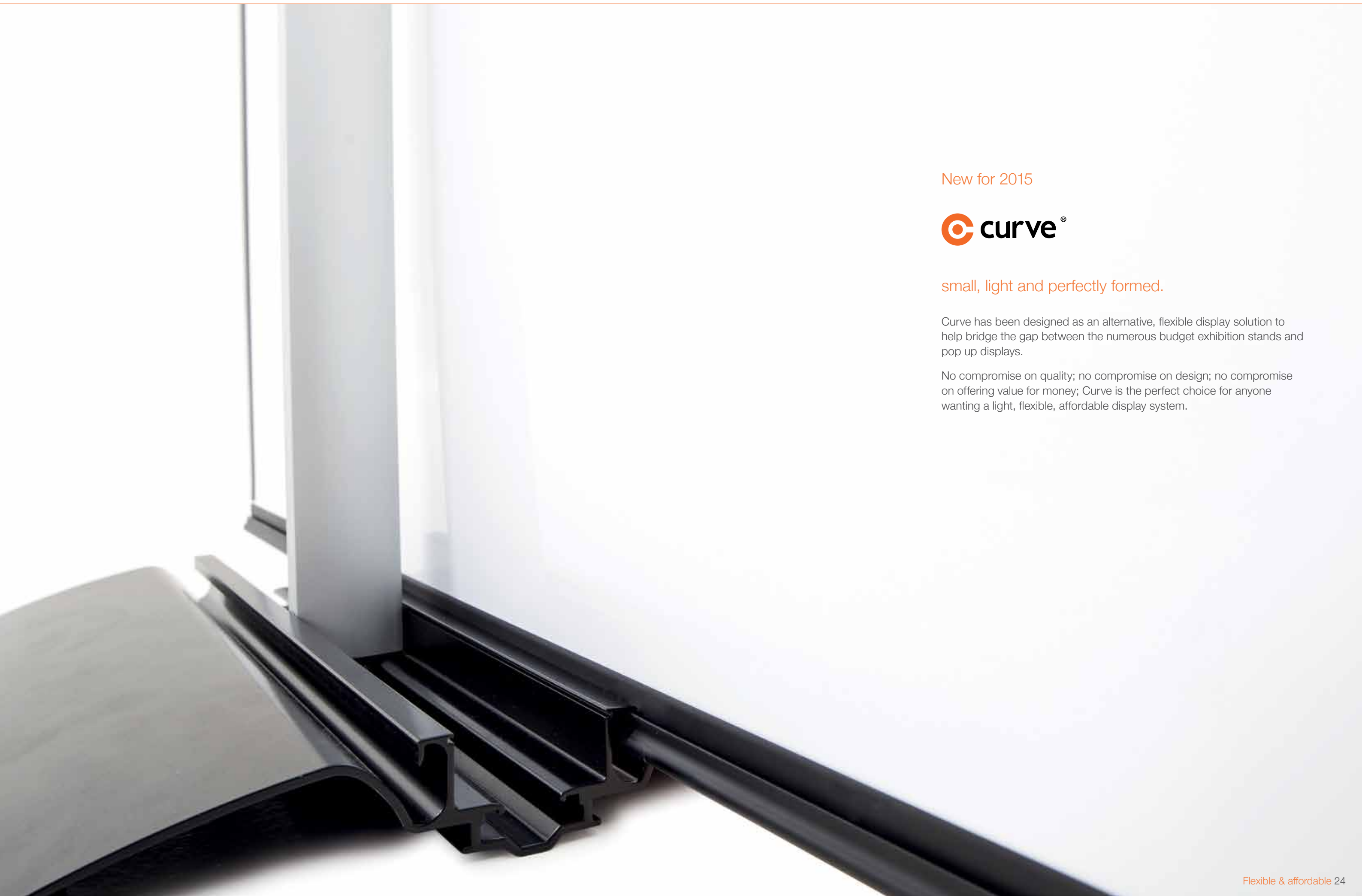


Twi:st Shelf

1. Graphic aperture cuts as required
2. 8mm thick shelf available measuring 800mm x 150mm in beech, white or black
3. Twi:st Shelf bracket with hand tightening nuts to allow for easy height adjustment
4. Twi:st Shelf with maximum spread load of 2kg and a maximum of 3 shelves per stand







New for 2015

 **curve**[®]

small, light and perfectly formed.

Curve has been designed as an alternative, flexible display solution to help bridge the gap between the numerous budget exhibition stands and pop up displays.

No compromise on quality; no compromise on design; no compromise on offering value for money; Curve is the perfect choice for anyone wanting a light, flexible, affordable display system.



Image shows 3 panel Curve kit,
Optional LED lights & transformers available

Front

Curve

1. Optional integrated low voltage LED light
2. Patented tensioning system
3. Powder coated aluminium base
4. Transportation in one bespoke bag
5. New graphic locating system
6. Three part upright simply slots together



Reverse

Technical Information

Available graphic widths: Straight: 850mm | Curved: 425mm
 Available graphic heights: 2050mm
 Packed weight: 12kg (including graphics)



1. Curve soft carry bag
2. Curve hardware & bag

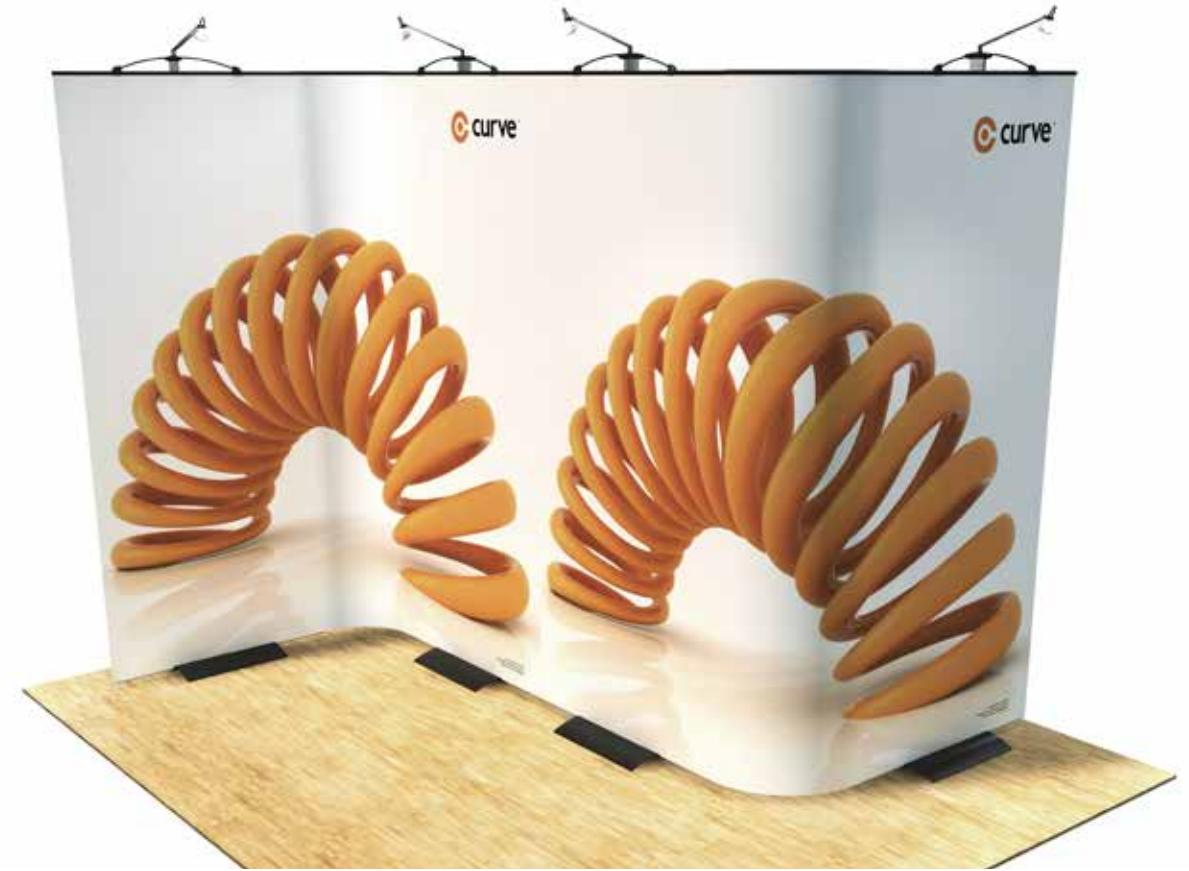


1. Curve Magnetic bars
2. New black base design
3. New white base design
4. Optional low voltage LED light

Using 1 Curve Kit



Using 2 Curve 3 Panel Kit & Easi-link



Using 2 Curve 3 Panel Kit & Easi-link



Using 2 Curve 3 Panel Kit & Easi-link





connect

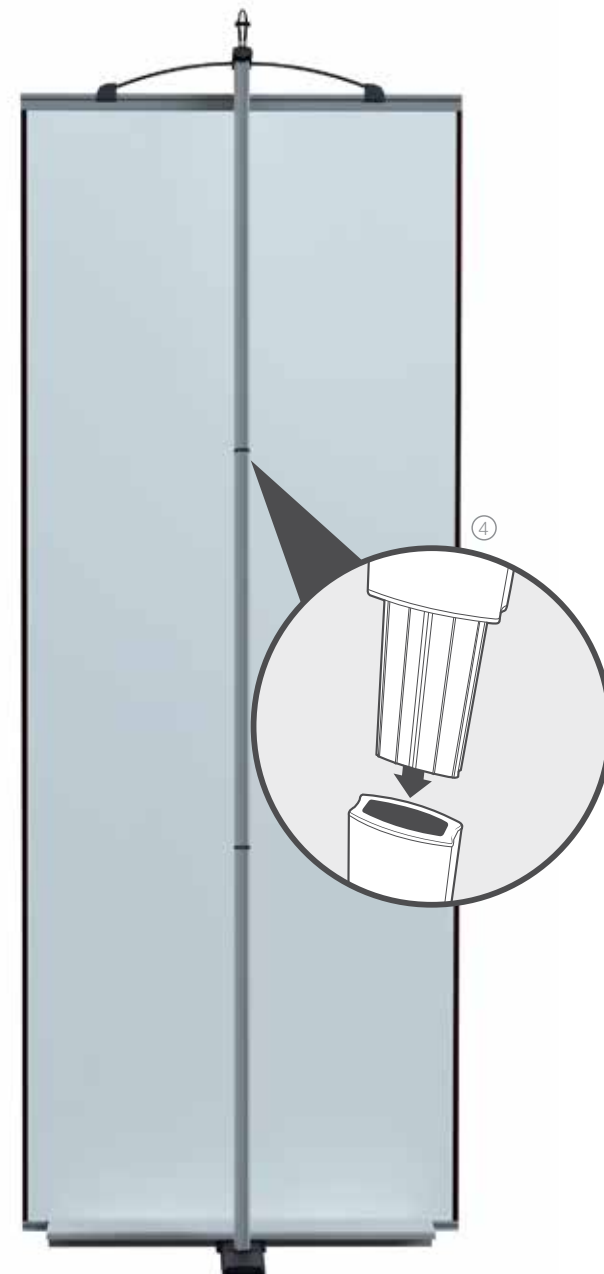
A lightweight alternative.

This elegant banner is ideal for those who need to travel light but do not want to compromise on quality or aesthetics. Connect benefits from the same tensioning system as the Twist & Curve banners and weighs only 6kg including graphic when packed into its carry bag.

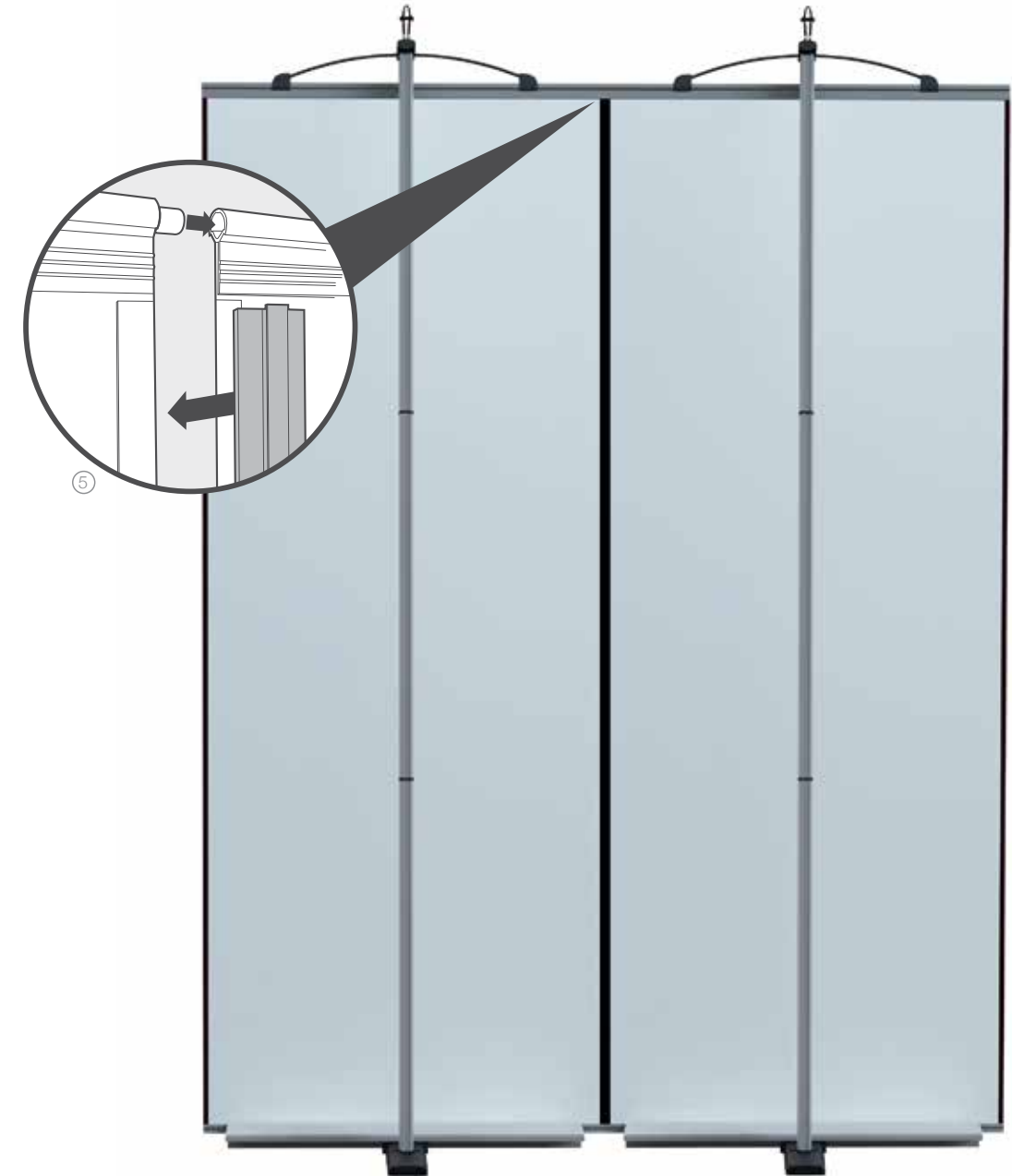
Its unique stable design allows multiple banners to be linked (when using an Easi-link Kit) to create a straight seamless back wall. Low voltage LED lighting is available as an optional extra.



Front



Reverse



Reverse of two linked Connect banners

Connect

1. Optional low voltage LED light
2. Patented tensioning system
3. Light weight base
4. Three part upright simply slots together
5. Easi-link seamlessly joins banners together

Technical Information

Available graphic widths: Straight: 850mm
 Curved: N/A
 Available graphic heights: 2060mm
 Packed weight: 6kg (including graphic panels)



1. Connect Graphic and Hardware Carry Bag
2. Connect hardware



1. Connect Base (with stabilising foot shown enabled)
2. Top upright section showing male joining
3. Bottom upright section showing female joining
4. Connect Easi-link



1 Connect banner



2 Connect banners joined



3 Connect banners joined





lumos

Light the way.

Designed specifically for retail, showroom and exhibition environments, Lumos is a new user-friendly revolutionary product range that really does give the ability to stand out from the crowd.

With the capability to have battery or mains operation and interchangeable back illuminated graphics using the latest LED technology, including RGB colour options; the Lumos light tower range offers true flexibility.



Introducing the Lumos tower range

Designed specifically for retail, showroom and exhibition environments, Lumos is a new user-friendly revolutionary product range that really does give the ability to stand out from the crowd. With the capability to have battery or mains operation and interchangeable back illuminated graphics using the latest LED technology, including RGB colour options; the Lumos light tower range offers true flexibility.



Lumos Mini Tower

Standing at 953mm tall, the Lumos Mini Tower comes complete with either a matt white or a black weighted base for added stability and is internally illuminated using white LED strip lighting. As an optional extra it can be supplied with RGB LED strip lighting that allows full colour lighting management with up to 20 different pre-programmed settings. Supplied with a mains power transformer, or for greater flexibility a rechargeable battery option is also available. This can illuminate the Mini Tower for over 14 hours.

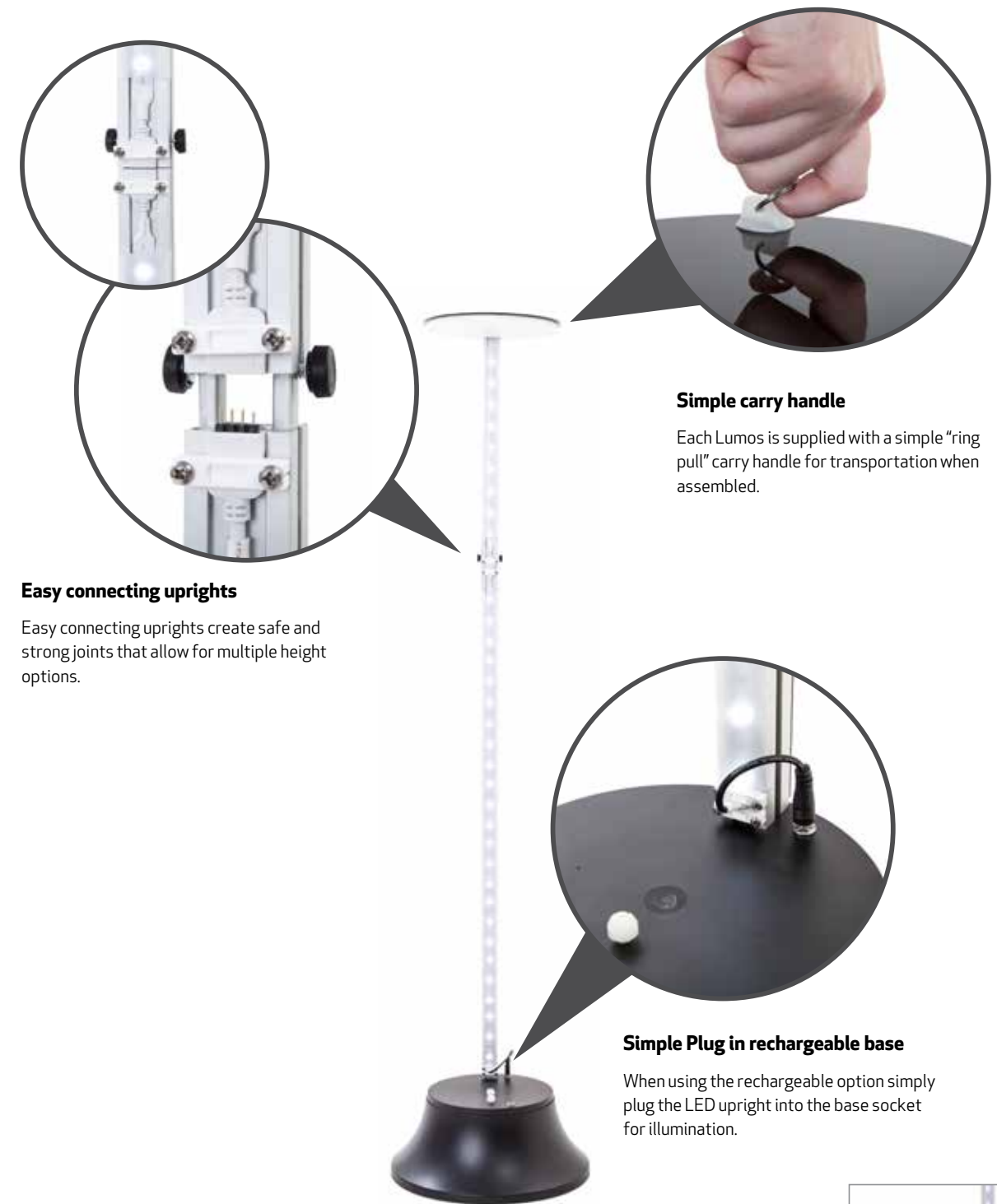
Lumos Midi Tower

The Lumos Midi Tower stands at 1318mm tall. Its two part upright ensures everything can be packed down into a standard size graphic bag. As an optional extra it can be supplied with RGB LED strip lighting that allows full colour lighting management with up to 20 different pre-programmed settings. Supplied with a mains power transformer, or for greater flexibility a rechargeable battery option is also available. This can illuminate the Midi Tower for over 10 hours.



Lumos Maxi Tower

The Lumos Maxi Tower stands at 2178mm tall. Its three part upright ensures everything can be packed down into a standard size graphic bag. As an optional extra it can be supplied with RGB LED strip lighting that allows full colour lighting management with up to 20 different pre-programmed settings. Supplied with a mains power transformer, or for greater flexibility a rechargeable battery option is also available. This can illuminate the Maxi Tower for over 8 hours.



Easy connecting uprights
Easy connecting uprights create safe and strong joints that allow for multiple height options.

Simple carry handle
Each Lumos is supplied with a simple "ring pull" carry handle for transportation when assembled.

Simple Plug in rechargeable base
When using the rechargeable option simply plug the LED upright into the base socket for illumination.



Optional white base and top



Counter Top

The Lumos Counter top is designed to display products, use a laptop or keyboard,

Linking Bases

Lumos bases can be linked together, meaning that two illuminated uprights can be powered by one transformer or battery.



Lumos Counter

Designed as an alternative to traditional counters, podiums or lecterns, the Lumos Counter is an ideal choice for any exhibition, showroom or retail environment. Its lightweight easy to assemble construction allows for interchangeable graphics which can be illuminated either with a mains transformer or a rechargeable battery, allowing wireless capability for over 10 hours.

Lumos Double Tower

The Lumos Double Tower has all the unique functions that are associated with the Lumos range but with double the impact. In addition to the matt white, double weighted base and two, two-part LED illuminated uprights it has the option of being powered from a mains supply or rechargeable battery lasting over 6 hours.



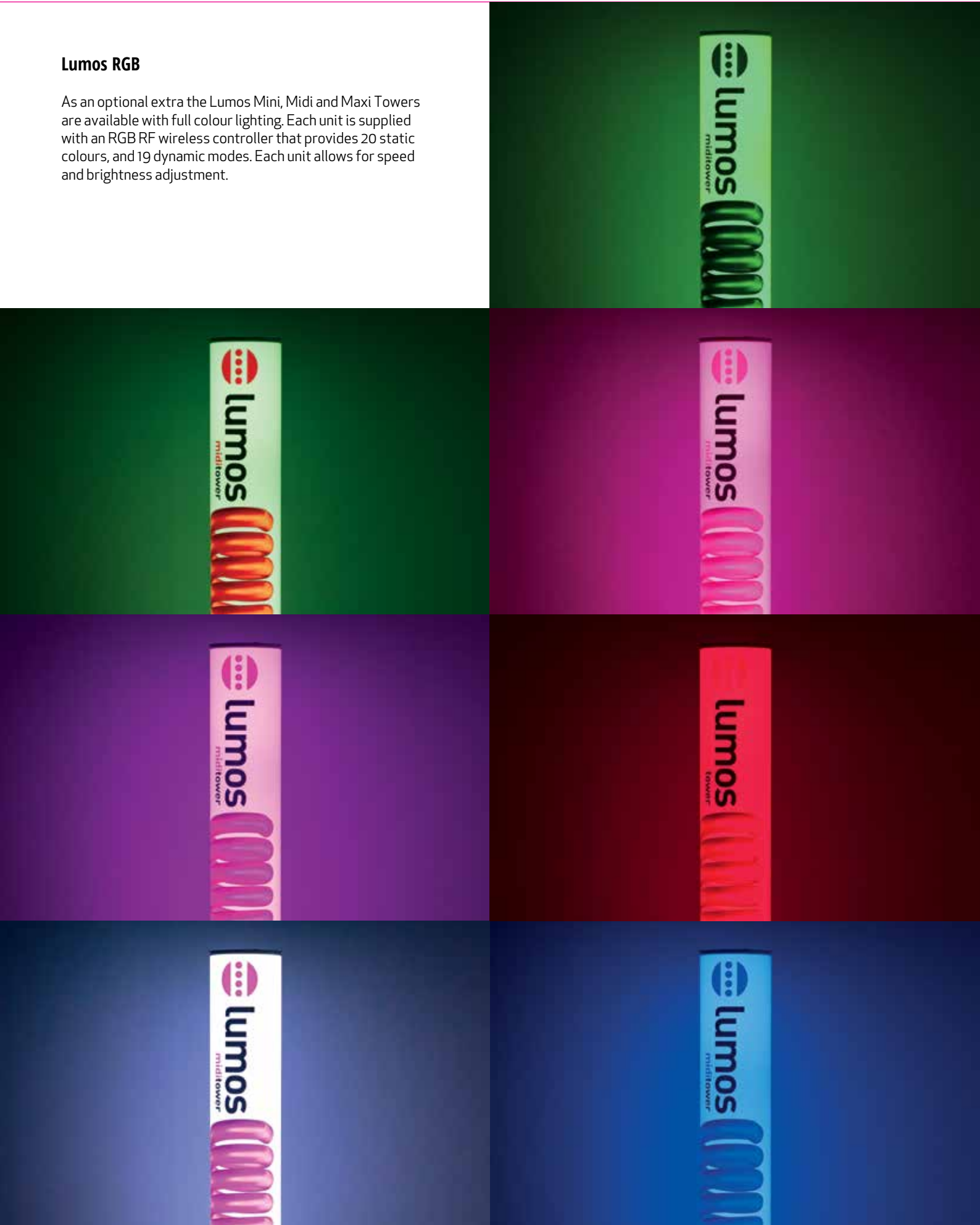
Optional black base and top





Lumos RGB

As an optional extra the Lumos Mini, Midi and Maxi Towers are available with full colour lighting. Each unit is supplied with an RGB RF wireless controller that provides 20 static colours, and 19 dynamic modes. Each unit allows for speed and brightness adjustment.



RF wireless remote



RGB Base connectors



White base option with bag





1. Lumos base bag
2. Lumos Uprights
3. Remote control for Lumos Mini, Lumos Midi and Lumos Maxi
4. Lumos graphic bag



the
COLLECTION
unique exhibition equipment

