

unibox

Retail

We transform ideas into a technical reality, collaborating with retailers and design agencies to create attractive, engaging retail environments that sell products more effectively.

ub

Click to navigate



LED Lightboxes



2525



Showcases



Kontakt



TFS



Magnetik



Neonist



RMU



SOL

ub Click to return



Retail Lightboxes

At Unibox, we have everything you need to create engaging, impactful retail displays. Displays that drive footfall, generate sales, and enhance brand awareness.

Our light boxes have virtually no size limitations and can be customised to your exact needs, colours, and specifications. Making them suitable for any retail environment.

And, with the option of easy to change fabric graphics to keep up with in-store promotions and seasonality, displays can be updated without a shopfitting team, lowering overall logistical costs.

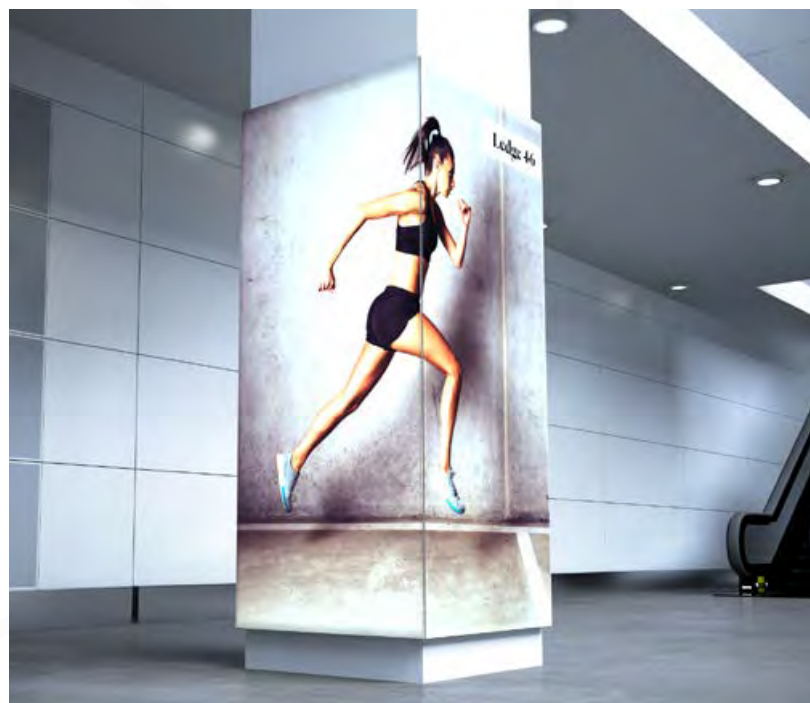
Large Format



Ledge 46

A backlit tension fabric lightbox, Ledge 46 uses a 46mm deep frame and is designed to be wall mounted.

The ledge 46 can be used as a standard lightbox, or seamlessly wrap around columns.



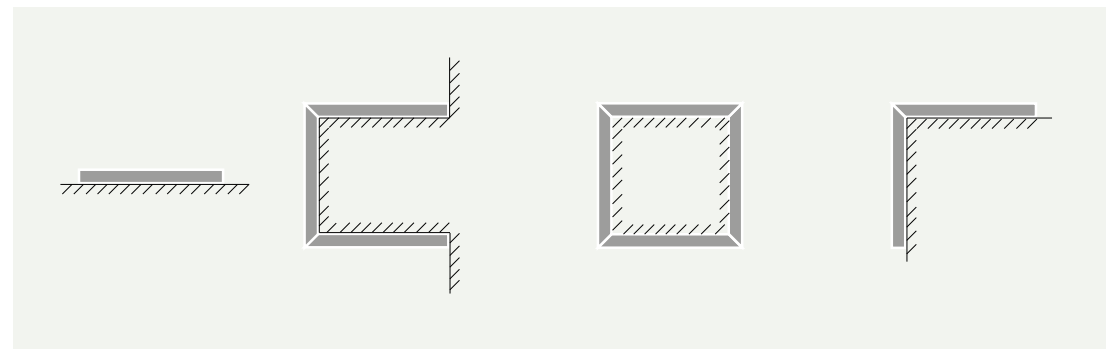
Ledge 4.6

With precision-engineered aluminium frames and fabric graphics that can be changed quickly and easily without relying on visual merchandising teams, our impactful, large-scale retail lightboxes help to drive footfall, generate sales, and enhance brand awareness.

Unibox light boxes use solid-state, LED lighting. This allows us to maintain a compact footprint, high brightness levels, and perfectly even light distribution across the large, interchangeable graphic surface.



Fabric Graphic Channel for seamless corners



Layout examples

Ledge 65

Ledge 65 is manufactured using a slim aluminium frame.

Combining back panels and flexible linear LED tape, Ledge 65 is designed to be wall mounted and can be scaled up to huge sizes.



Ledge 65

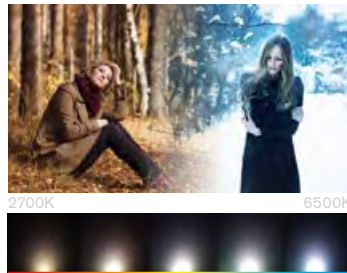
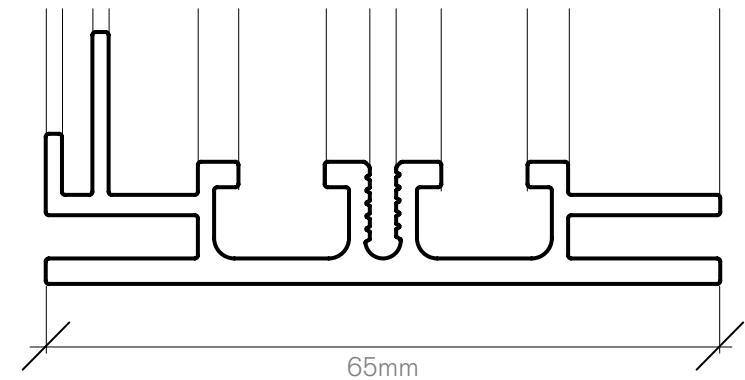
With precision-engineered aluminium frames and fabric graphics that can be changed quickly and easily without relying on visual merchandising teams, our impactful, large-scale retail lightboxes help to drive footfall, generate sales, and enhance brand awareness.

Unibox light boxes use solid-state, LED lighting. This allows us to maintain a compact footprint, high brightness levels, and perfectly even light distribution across the large, interchangeable graphic surface.

Technical Details

	2.4W/m tape	4.8W/m tape
Operating Voltage	12V DC	
Power Consumption ¹	43W/m ²	86W/m ²
Brightness	500cd/m ²	950cd/m ²
Colour Temperature	6500K (+/- 500K)	
L70	>36000hrs	

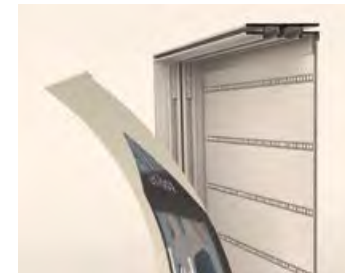
Included driver suitable for 110-240V 50-60Hz



Custom Colour Temperatures



LED Back Panel



Fabric Graphic Channel



Integrated LED lighting



Ledge 135

A backlit tension fabric lightbox, Ledge 135 uses a 135mm deep frame and is designed to be wall mounted or freestanding in larger sizes.

Ledge 135 utilises flexible LEDs for high-powered illumination, with even graphic illumination.



Ledge 135

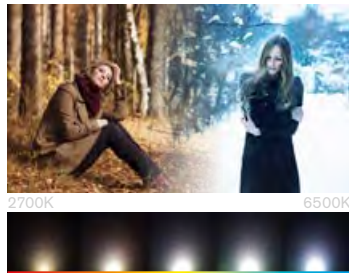
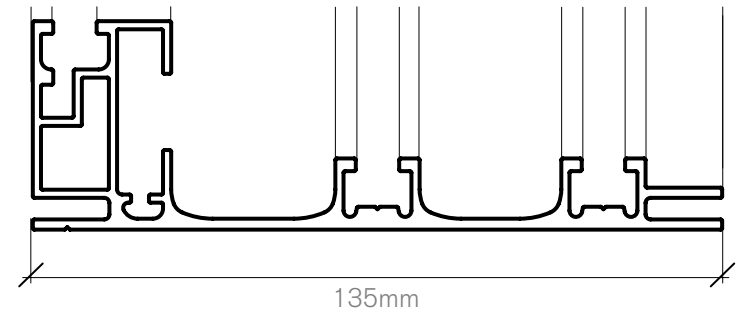
With precision-engineered aluminium frames and fabric graphics that can be changed quickly and easily without relying on visual merchandising teams, our impactful, large-scale retail lightboxes help to drive footfall, generate sales, and enhance brand awareness.

Unibox light boxes use solid-state, LED lighting. This allows us to maintain a compact footprint, high brightness levels, and perfectly even light distribution across the large, interchangeable graphic surface.

Technical Details

Operating Voltage	12V DC
Power Consumption	80W/m ²
Brightness	600cd/m ²
Colour Temperature	6500K (+/- 500K)
L70	>36000hrs

Included driver suitable for 110-240V 50-60Hz



Custom Colour Temperatures



LED Back Panel



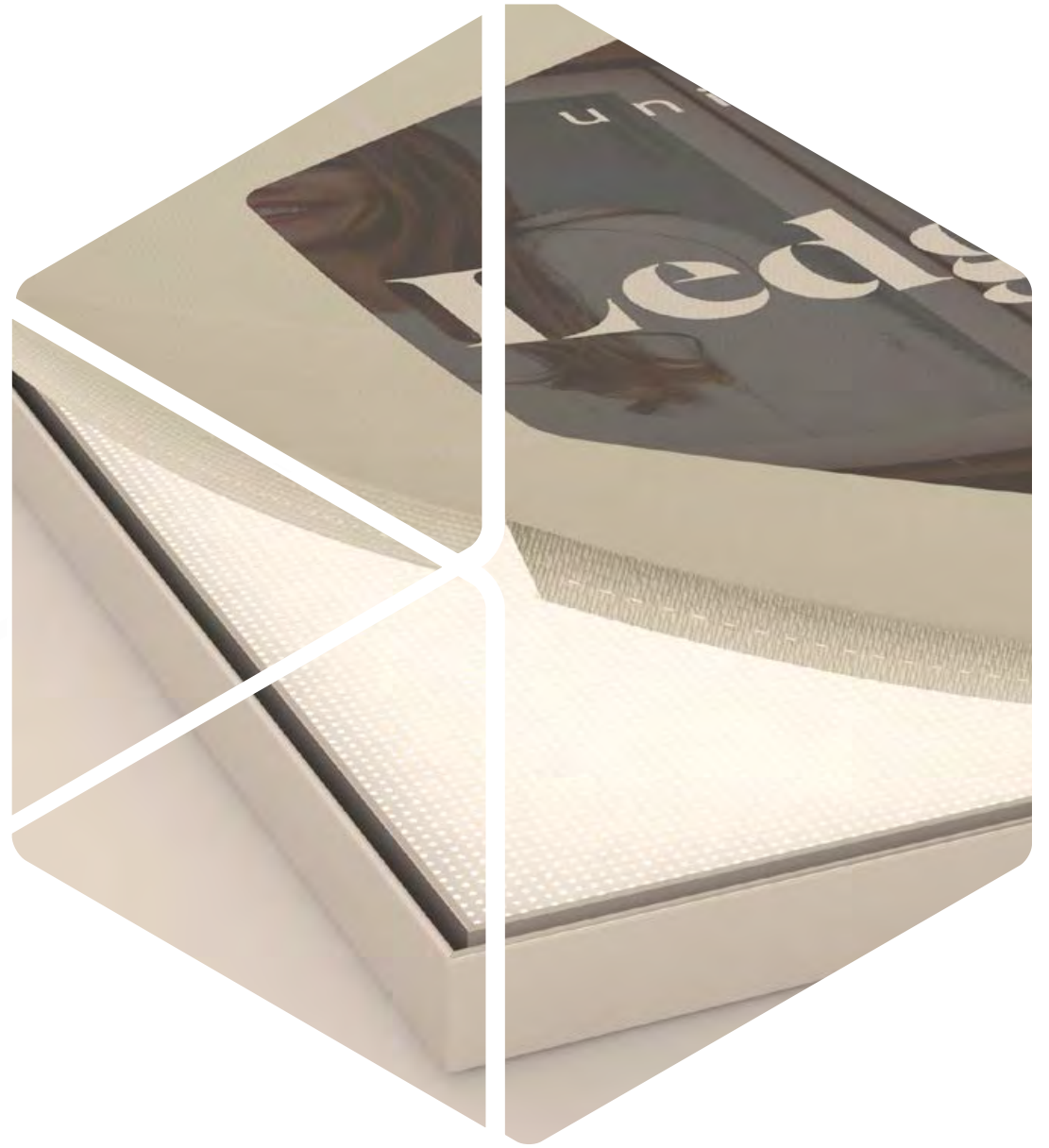
Fabric Graphic Channel



Integrated LED lighting



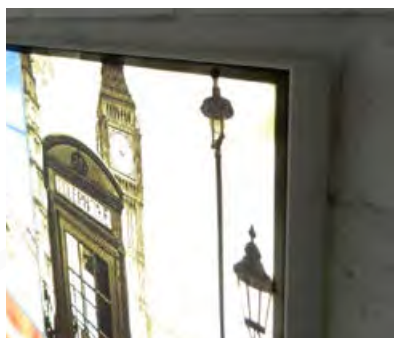
Slimline



Ledge 22

Our slimmest ever illuminated lightbox, Ledge 22 combines our latest range of aluminium profiles and instantly replaceable Tension Fabric System graphics.

The lightweight nature of our 22mm slim lightbox makes it perfect for wall mounted displays, reducing footprint in the most crowded of retail spaces.



Ledge 22

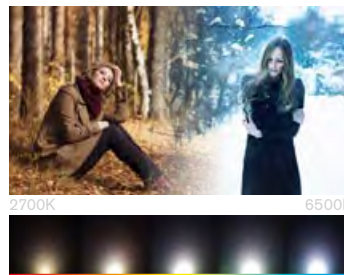
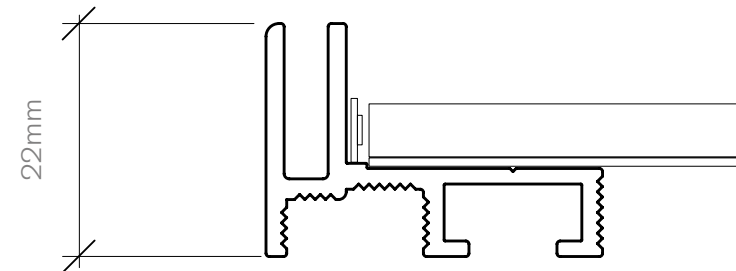
Using cutting-edge LED light and laser-etching technology, the result is an even distribution of light across the taut fabric, including across bespoke frames and sizes.

Unibox light boxes use solid-state, LED lighting. This allows us to maintain a compact footprint, high brightness levels, and perfectly even light distribution across the large, interchangeable graphic surface.

Technical Details

Operating Voltage	12V DC
Power Consumption ¹	29W/m ² to 96W/m ²
Brightness ²	700cd/m ²
Colour Temperature	6500K (+/- 500K)
L70	>36000hrs

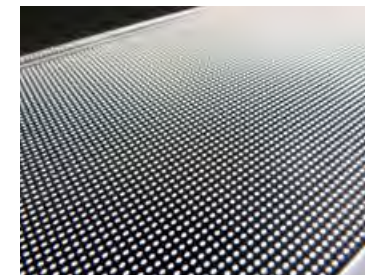
¹Dependent on size ²Based on 500x500mm, brightness dependent on size
Included driver suitable for 110-240V 50-60Hz



Custom Colour Temperatures



Fabric Graphic Channel



Integrated LED lighting

Ledge 34

Ledge 34 uses our edge lit panel technology to perfectly illuminate tension fabric graphics.

The 34mm profile is slim enough for most wall mounted applications and even larger custom sizes are uniformly and brightly illuminated.



Ledge 34

Ledge 34 uses our edge lit panel technology to perfectly illuminate tension fabric graphics.

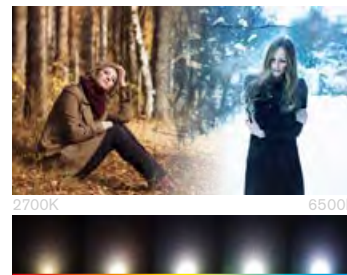
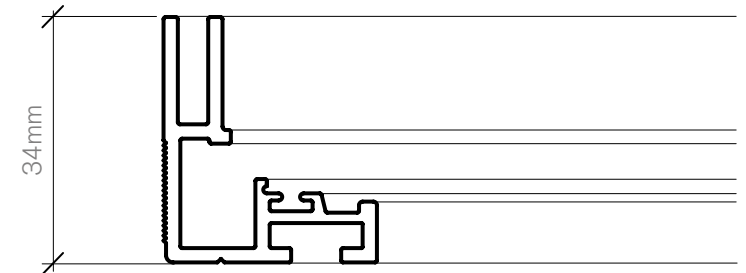
It does this by using high quality PCBs, designed by Lumenal, with a bespoke laser etched light guide plate in a lightweight but robust frame.

Unibox light boxes use solid-state, LED lighting. This allows us to maintain a compact footprint, high brightness levels, and perfectly even light distribution across the large, interchangeable graphic surface.

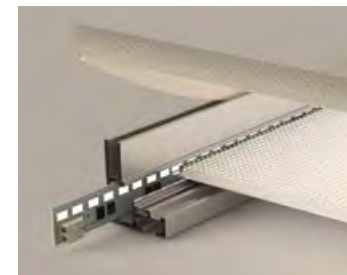
Technical Details

Operating Voltage	24V DC
Power Consumption ¹	66W/m ² · 160W/m ²
Brightness ²	800cd/m ²
Colour Temperature	5700K (+/- 500K)
L70	>36000hrs

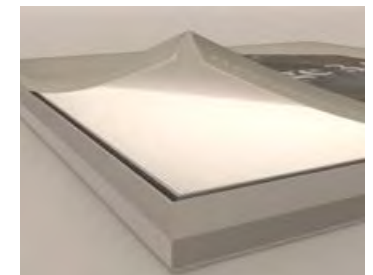
¹Dependent on size ²Based on 500x500mm, brightness dependent on size
Included driver suitable for 110-240V 50-60Hz



Custom Colour Temperatures



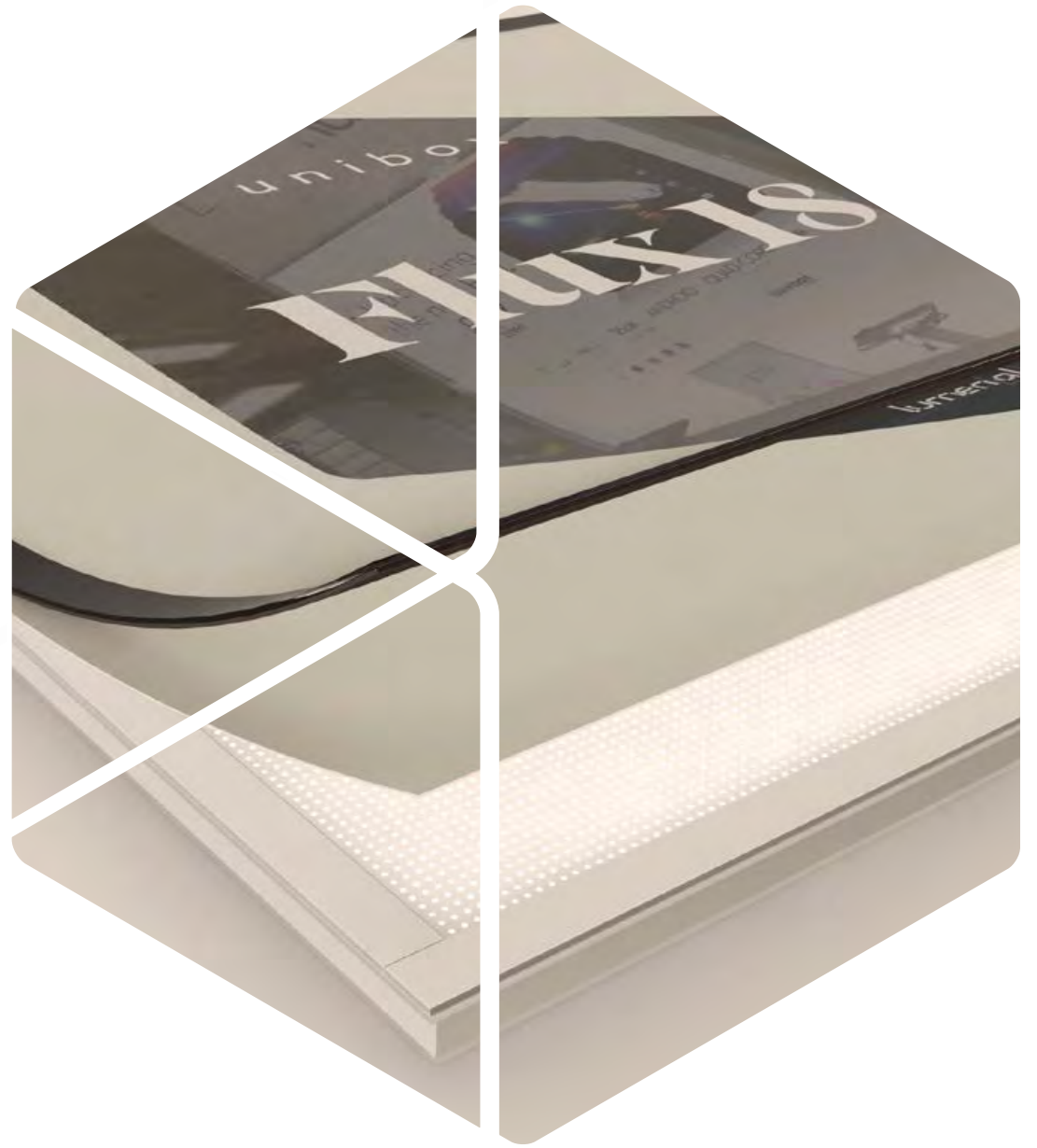
Integrated LED Lighting



Fabric Graphic Channel



Integrated



Flux 18

Flux 18 is the complete solution for your illuminated POS displays.

An edge-lit panel provides incredibly bright, even illumination across custom sized graphic display frames.



Flux 18

The aluminium frame houses the laser etched light guide plate, LEDs, wiring and thermal management, allowing it to be built into any display fixture.

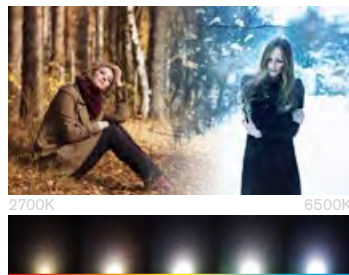
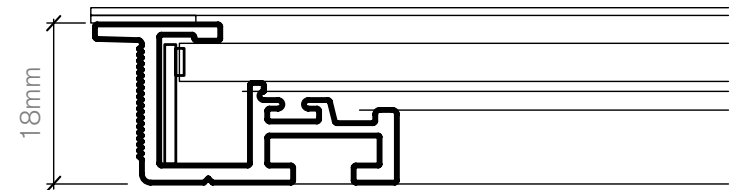
Duratrans graphics are held in place by a PETG lens with magnetic fixing, making it an easy way to create high quality graphic displays without any specialist tools or technical knowledge.

Unibox lightboxes use solid-state, LED lighting. This allows us to maintain a compact footprint, high brightness levels, and perfectly even light distribution across the large, interchangeable graphic surface.

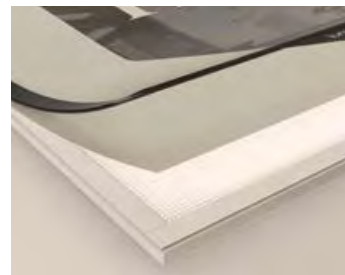
Technical Details

Operating Voltage	24V DC
Power Consumption ¹	66W/m ² - 160W/m ²
Brightness ²	800cd/m ²
Colour Temperature	5700K (+/- 500K)
L70	>36000hrs

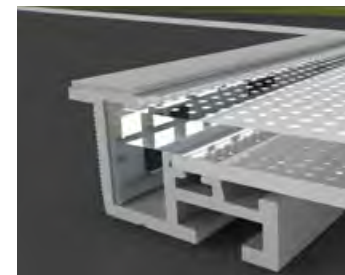
¹Dependent on size ²Based on 500x500mm, brightness dependent on size
Included driver suitable for 110-240V 50-60Hz



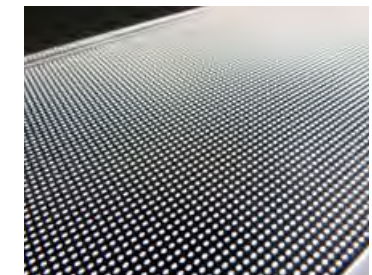
Custom Colour Temperatures



Duratrans Graphic



Laser-etched Panel



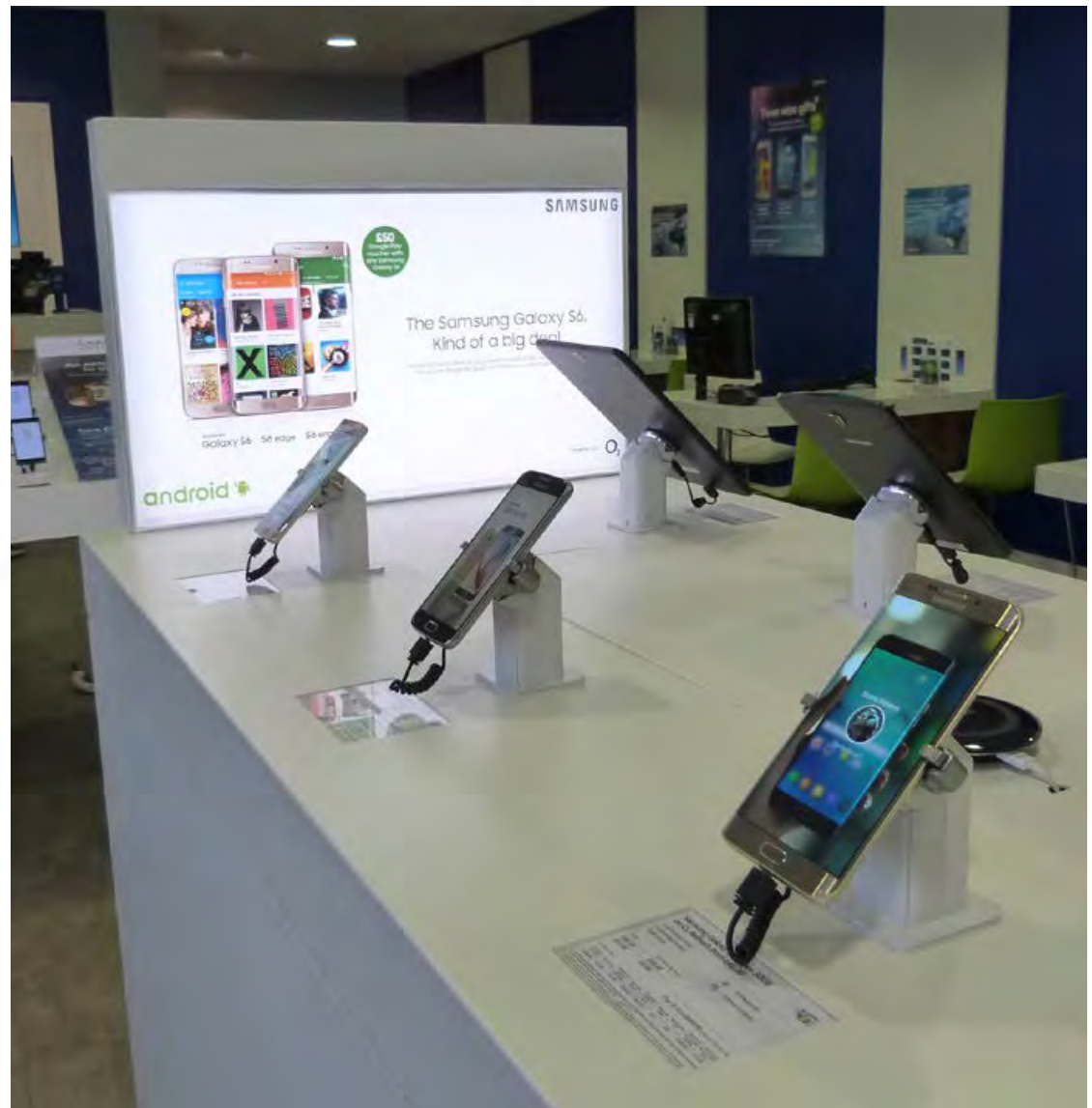
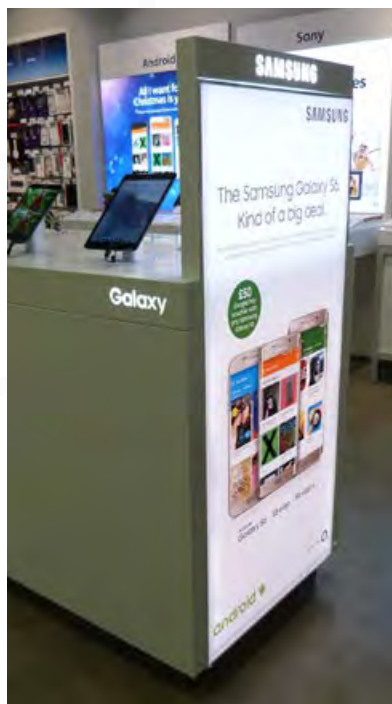
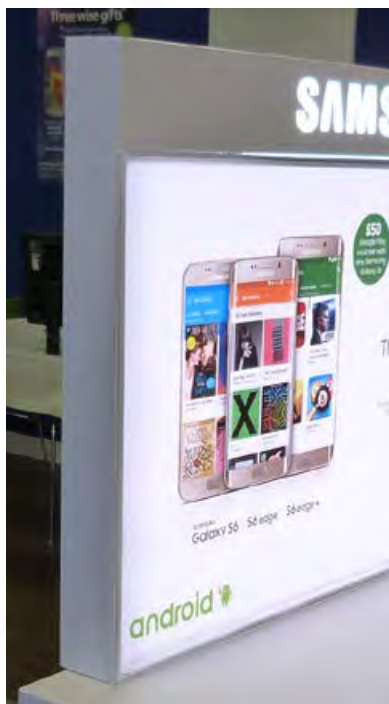
Integrated LED lighting



Ledge 50

Ledge 50 is a lightweight, high quality lightbox suitable for ceiling-hung signage, integrated gondola signage, and wayfinding.

Our thinnest double sided lightbox, Ledge 50 uses the latest technology to provide bright, even illumination on both sides, from a single light-source.



Ledge 50

Our thinnest double sided lightbox, Ledge 50 uses the latest LED light guide plate technology to provide bright, even illumination on both sides, from a single light source.

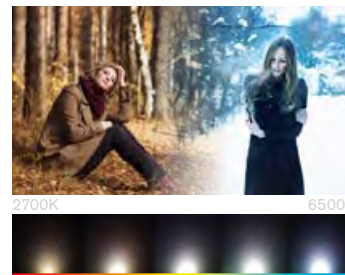
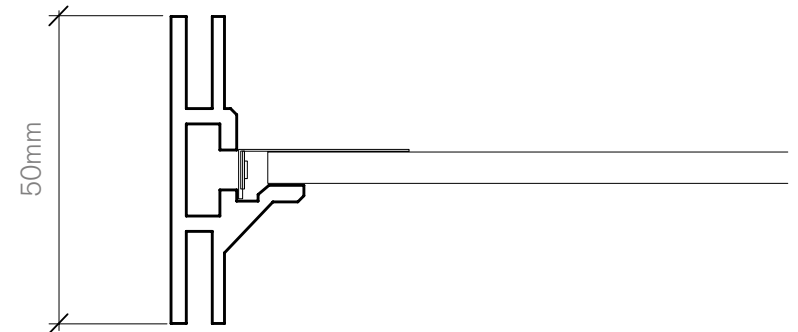
Ledge 50 can also be integrated into the top of a gondola unit to create an impactful POS display solution.

Unibox lightboxes use solid-state, LED lighting. This allows us to maintain a compact footprint, high brightness levels, and perfectly even light distribution across the large, interchangeable graphic surface.

Technical Details

Operating Voltage	12V DC
Power Consumption ¹	29W/m ² - 96W/m ²
Brightness ²	700cd/m ²
Colour Temperature	6500K (+/- 500K)
L70	>36000hrs

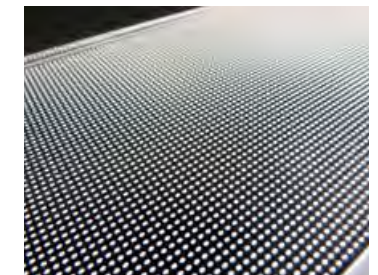
¹Dependent on size ²Based on 500x500mm, brightness dependent on size
Included driver suitable for 110-240V 50-60Hz



Custom Colour Temperatures



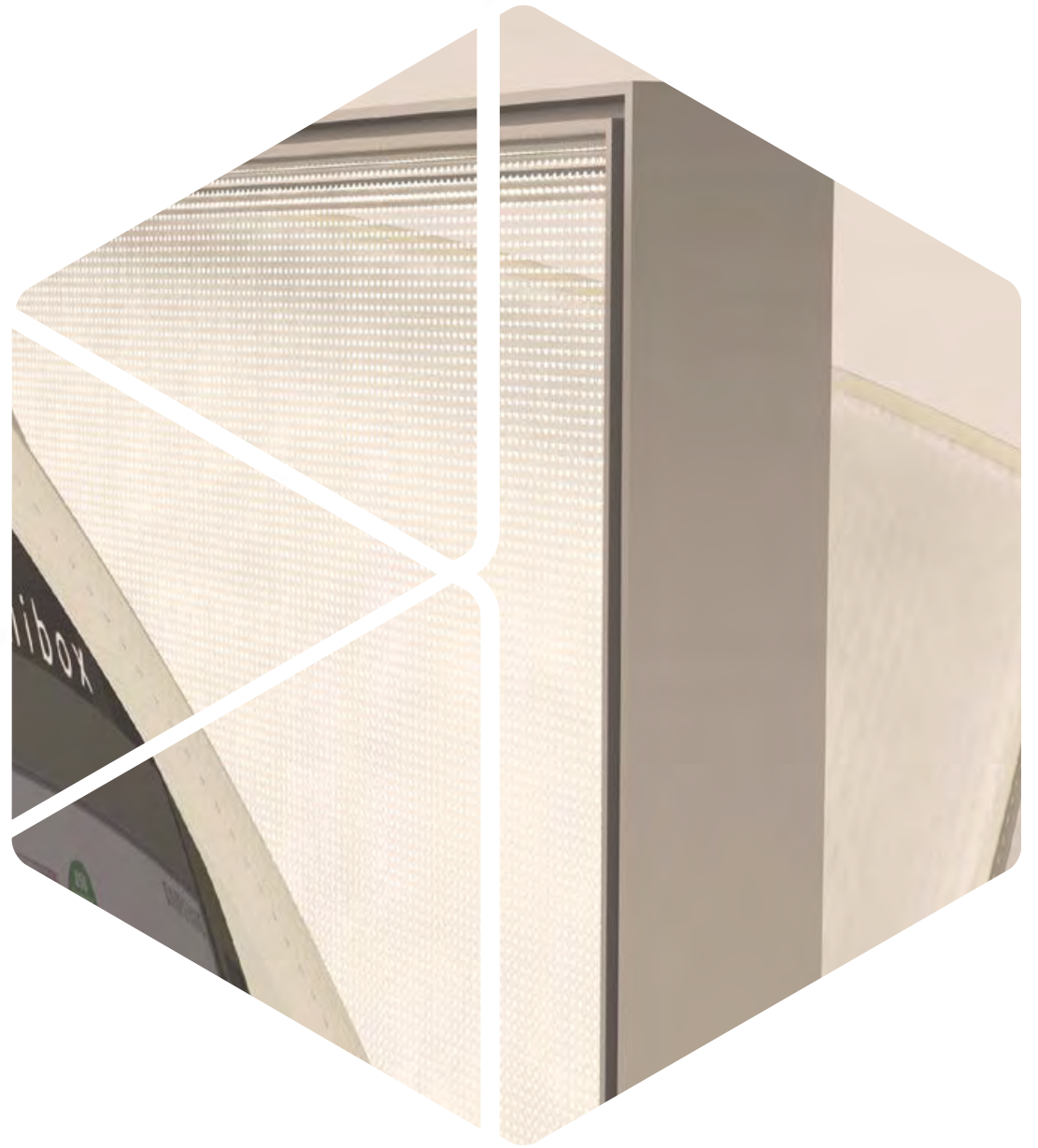
Fabric Graphics



Integrated LED lighting



Double Sided



Ledge 105

Ledge 105 is a double-sided LED lightbox that uses ultra-bright LED modules and can be combined with our innovative magnetic display system - Magnetik.

Magnetik is a concealed magnetic shelving system, creating a complete illuminated graphic and product display solution.



Ledge 105

Ledge 105 is a double-sided LED lightbox that uses ultra-bright LED modules and an innovative magnetic display system.

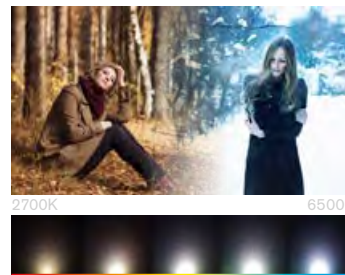
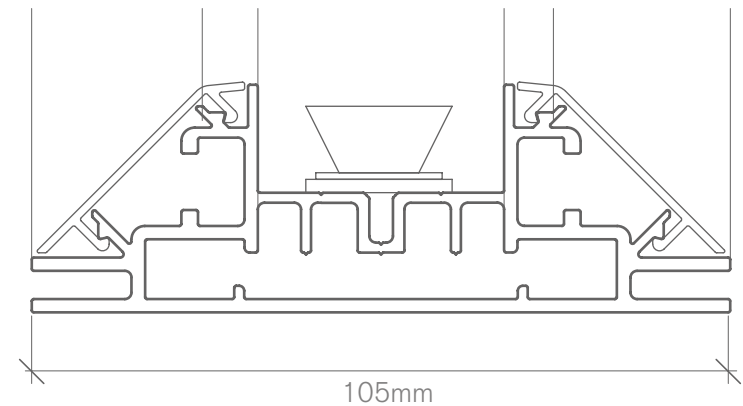
A side-lit lightbox, Ledge 105 is supplied flat pack for easy self-assembly and offers low energy consumption and reduced shipping costs.

Unibox lightboxes use solid-state, LED lighting. This allows us to maintain a compact footprint, high brightness levels, and perfectly even light distribution across the large, interchangeable graphic surface.

Technical Details

Operating Voltage	110-240V 50-60Hz
Power Consumption ¹	19W/m ² · 84W/m ²
Brightness ²	500cd/m ²
Colour Temperature	5700K (+/- 500K)
L70	>36000hrs

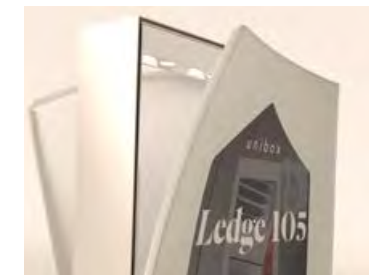
¹Dependent on size ²Based on 500x500mm, brightness dependent on size
Included driver suitable for 110-240V 50-60Hz



Custom Colour Temperatures



LEDs with Mounted Optics



Fabric Graphic





Tension Fabric System

The Unibox Tension Fabric System creates branded, reconfigurable displays capable of adapting to any retail environment.

Available in multiple depths, the system can be tailored to meet your requirements and floor space, and can even be used to create ceiling hung displays.

Our Range



Single Sided

Versatile graphic solution for wall-mounted displays in 32mm profile depth



Double Sided

High impact, double sided display solution capable of freestanding or being ceiling-hung



Curved

Vertical and horizontal curves create archways and PODs, amongst other unique signage solutions



Micro

Our slimmest tension fabric profile, measuring 17mm deep, ideal for wall-mounting



3D

Create seamless graphics that wrap-around corners, either freestanding or ceiling hung



Cube

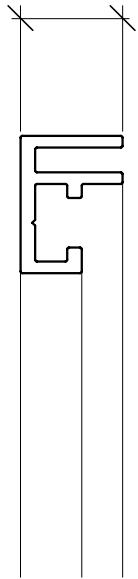
Add an extra dimension to 3D TFS displays, with 5-sided freestanding or ceiling hung cubes



Profiles

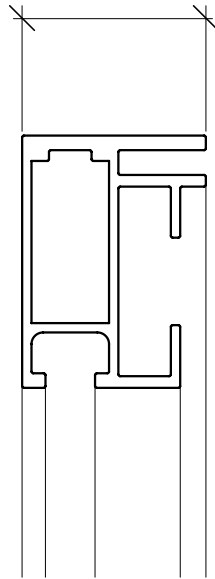
Micro

17.5mm



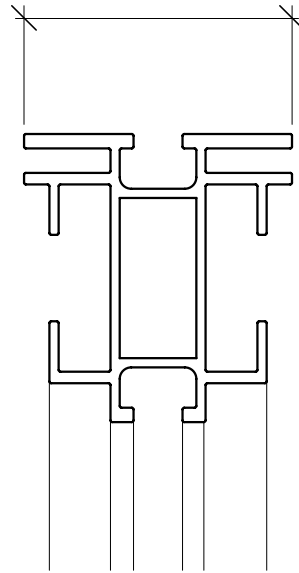
Single Sided

31.5mm



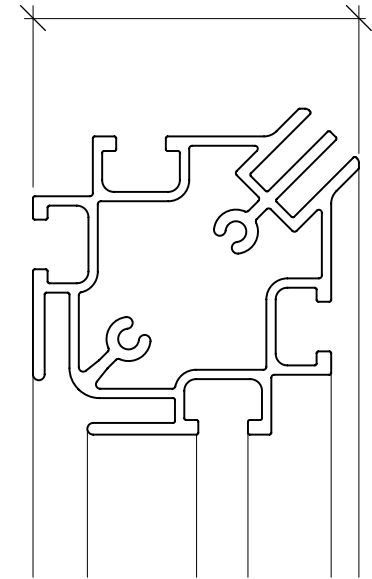
Double Sided

46.5mm



3D & Cube

55.8mm





Tension Fabric

Unibox's Tension Fabric System allows for the insertion of bespoke graphics with silicone edging that stretches across the surface of the frame, leaving no creases.





Reliability

Unique dual-plate connectors distribute the mechanical loads of TFS at the frame corners, ensuring the frame stays rigid and the angle consistent at all times.





Capability

With in-house CNC technology and aluminium bending machinery, we ensure your display is built to the exact requirements.





Magnetik

The Magnetik concealed accessory system offers a complete graphic and product display solution, for maximum visual merchandising impact.

Using a clever bit of engineering - when combined with our tension fabric system - our magnetik 'floating' shelves enable the design of stylish, eye-catching product displays and promotions.

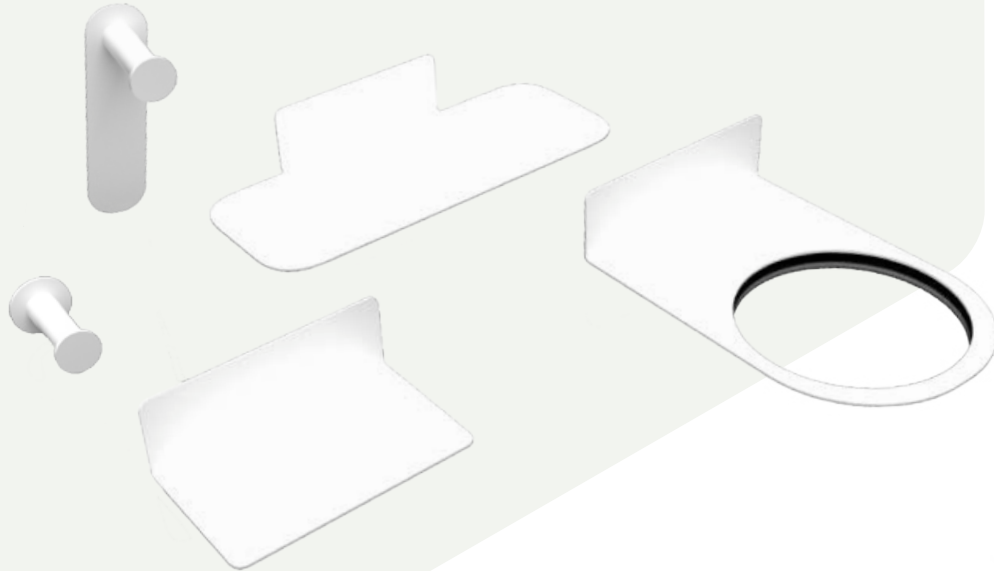
Successfully amalgamating merchandise into graphic displays, Magnetik helps to showcase products, bolster retail sales, and reinforce brand awareness.



Details

Uniting movable uprights, repositionable neodymium magnet units hidden within a tension fabric system, and a suitable metallic backed shelf, our magnetic concealed display system can be configured to support a range of different product weights and formats.

All with just a pole and some magnets.





Retail Merchandising Units

Our RMUs are the perfect blend of form and functionality.

A familiar sight in shopping centres and other retail environments, our standard and bespoke showcases, kiosks, and stand-alone counter solutions maximise brand impact and customer interaction – ultimately - leading to increased sales.

Our RMUs are designed to be eye-catching, with a range of high-quality shelving, LED lighting, and other accessory options to help make them stand out.



Modular RMU

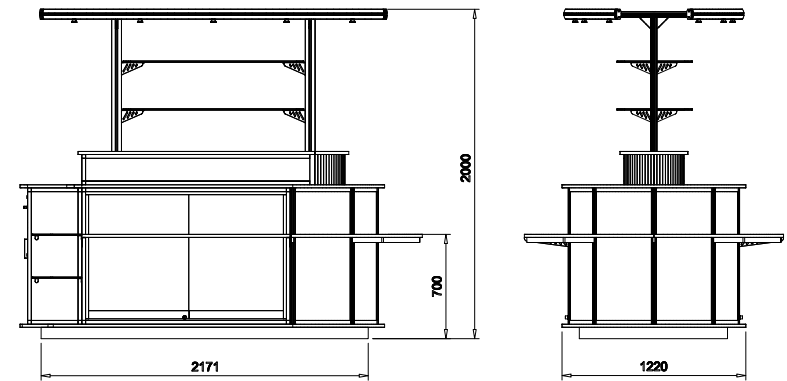
We have developed Modular RMU's that can be reconfigured depending on its location within the shopping mall, with slatwall, showcases and glass shelving in addition to LED lighting and other standard accessory options.

	Height	Length	Width
RMU	2000	2400	1200



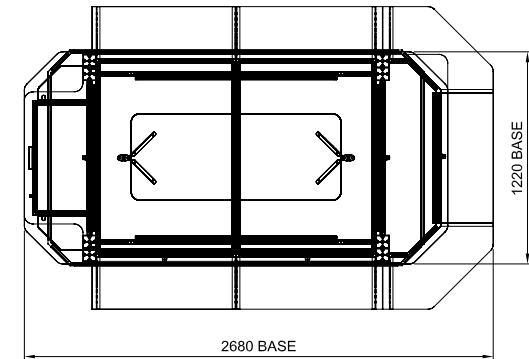
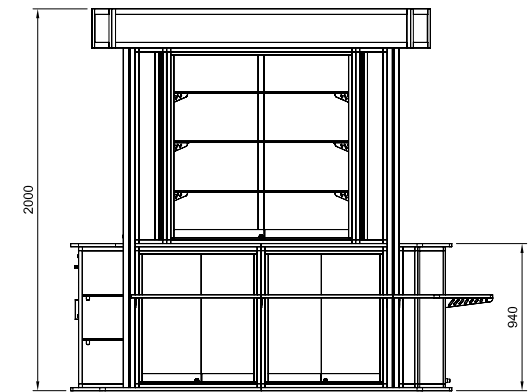
Curved Halo RMU

The Curved Halo RMU offers rounded edges along shelving units and storage space in addition to all the standard benefits you receive from our RMU's. You can specify the Curved Halo unit to suit your individual display requirements.



Secure RMU

Our Secure RMU features all the benefits of our Standard Halo RMU, a high quality finish with storage and product display options throughout, with the addition of roller shutters and high security lockable storage units.



Details

Our RMU's can be customised with a range of integrated features:



Slatwall Panel



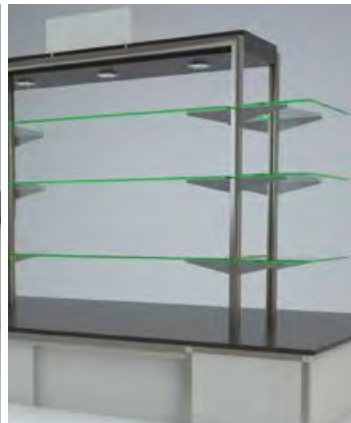
Secure Glass Showcase



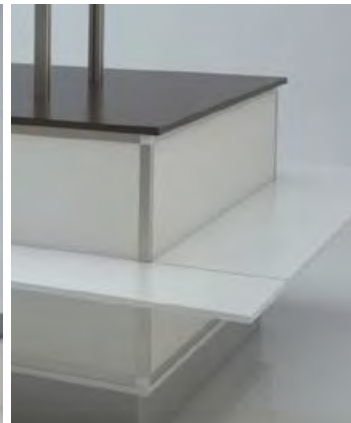
Nightsheet



Staging Tier



Glass Shelves



Side Shelves



End Shelves



Signage

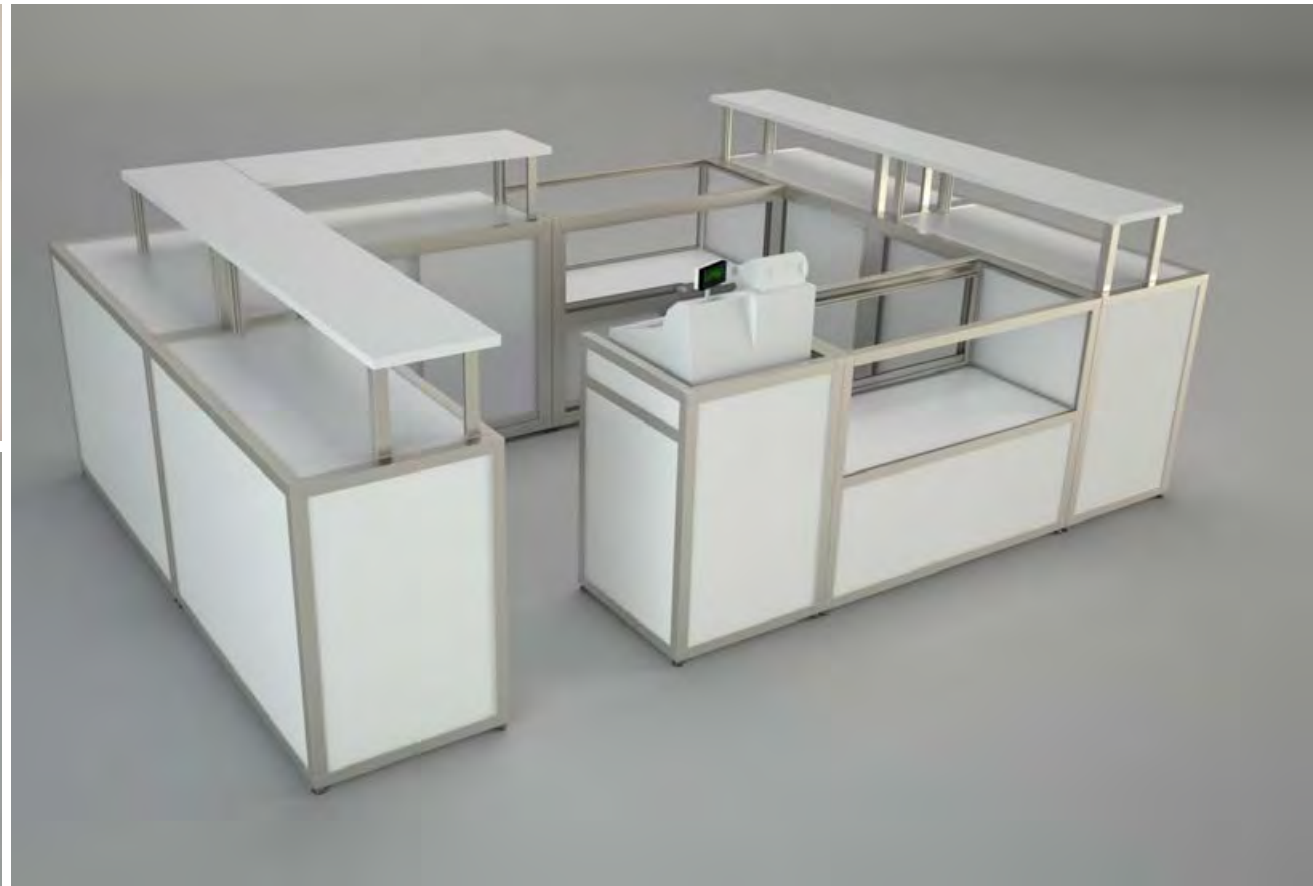
Counter Islands

Our range of standard and custom Counter Islands can be tailored to your exact specifications and are available in a wide range of finishes and configurations, including the printed glass finish seen below.



Counter Islands

All Counter Islands and product displays have ample secure storage in the form of easy glide draws and fully lockable cupboards. Choice of wood finish, bumper rails, cable management, bag shelf and recessed till area, all contribute to the exceptionally high finish, quality and functionality.



Counter Islands





Sol

A modern day display classic, Sol is simple to put together and reconfigure. Making it both visually appealing, and cost-effective.

As elegant and minimalist as it is practical and robust, the Sol modular retail display system creates exciting, reconfigurable displays, quickly and easily.

Made up of modular lengths that interconnect to make geometric structures, Sol is capable of carrying a wide variety of merchandise.

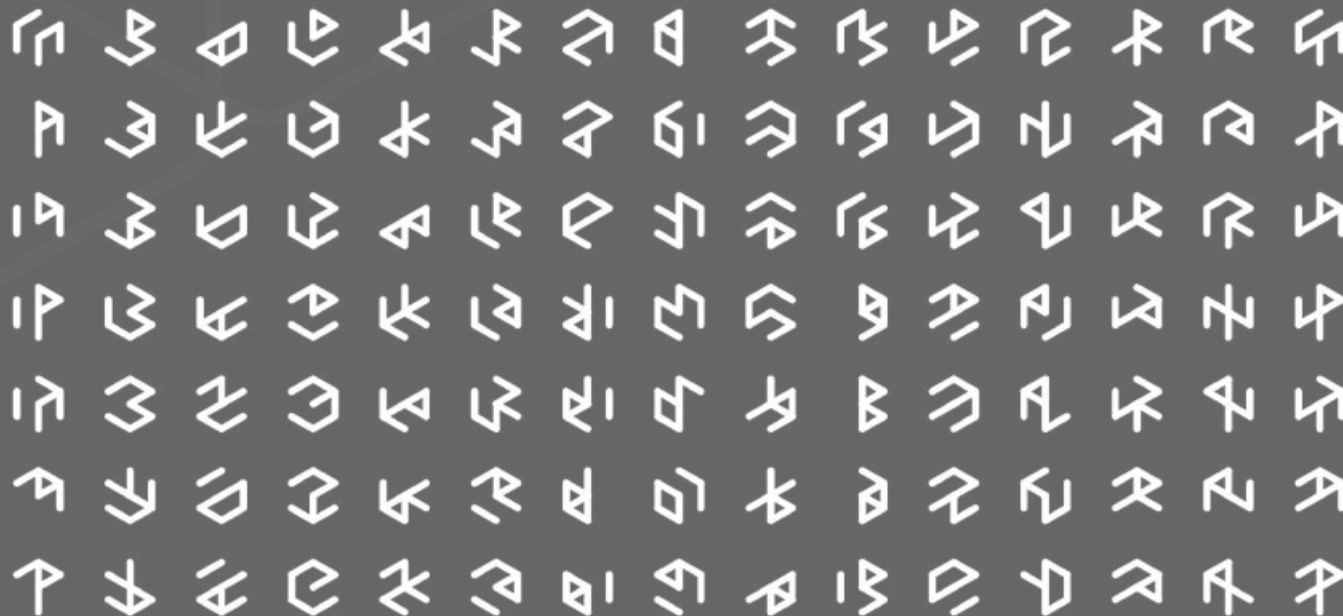


The Inspiration

In the 1960s Solomon LeWitt began investigating the cube; a form that remained an essential element of his artistic language throughout his career.

But in 1973, the artist started to literally take the cube apart. The Conceptual artist's exploration places emphasis on the idea rather than the art object, and so LeWitt asked: how many variations could be created by systematically subtracting parts from an open cube?

For months he painstakingly worked through the artistic process and idea, and concluded with 122 variations of incomplete open cubes.





Collaboration

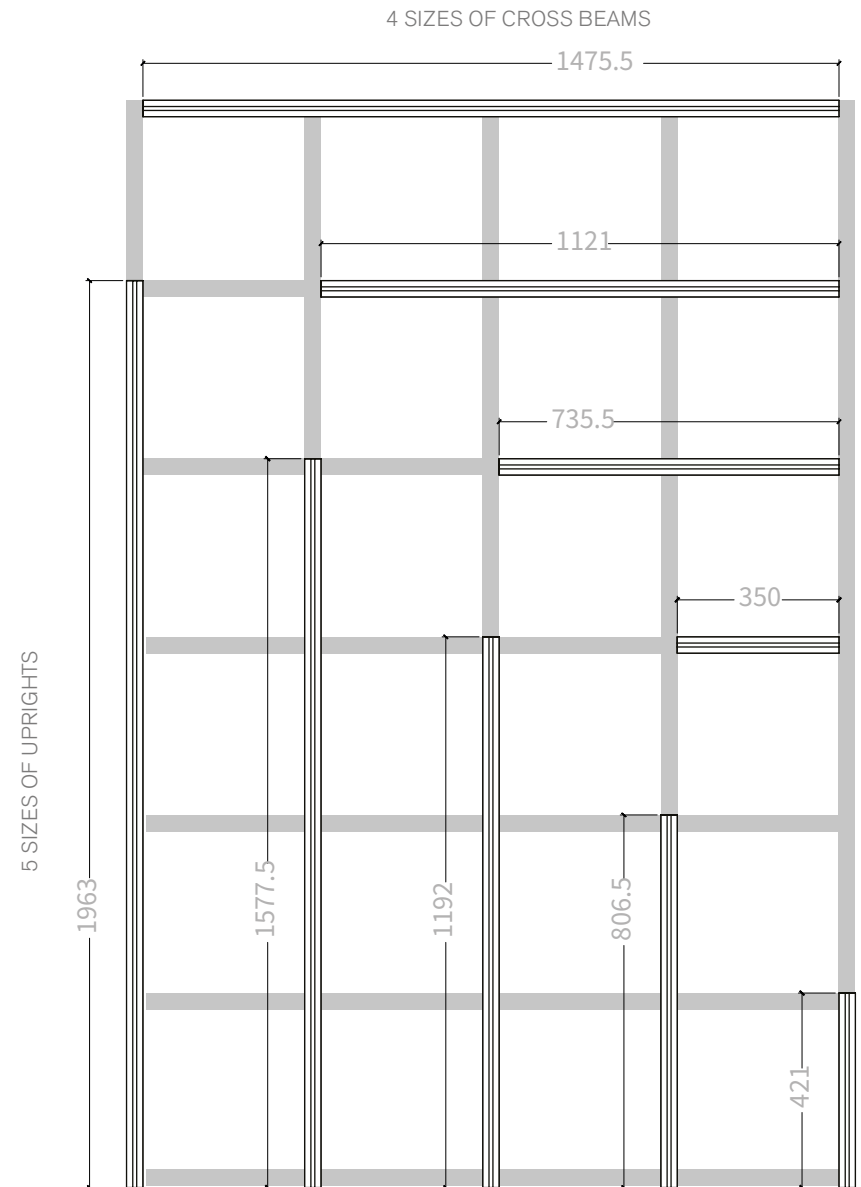
Developed in collaboration with designer Tom Dixon, the Sol system highlights our ability to design and manufacture specially commissioned retail display solutions.

Something that has allowed us to create many complex, technically exacting pieces of display engineering for some of the world's most respected retail brands.

With this commitment to meeting the needs of our retail customers at the heart of everything we do, whether you need an addition to an existing system, an entire kit, or something more bespoke, all our customers benefit from the results of our investment in research and development.

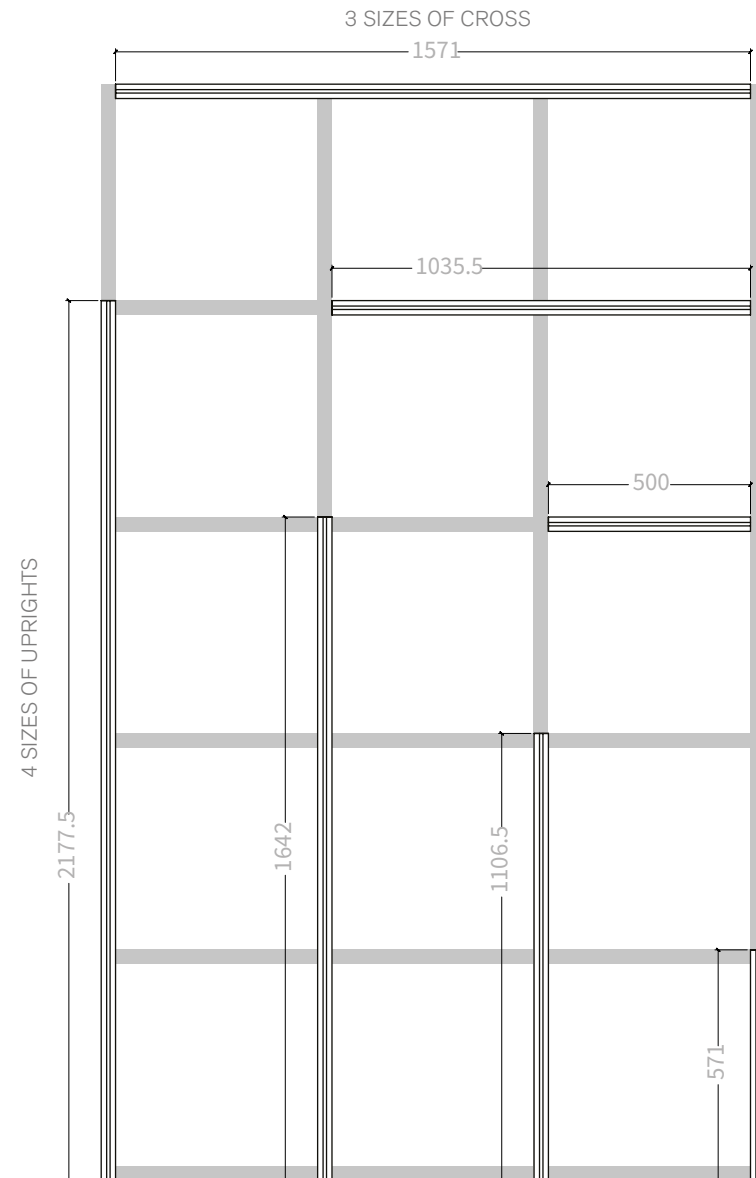
Sol 350

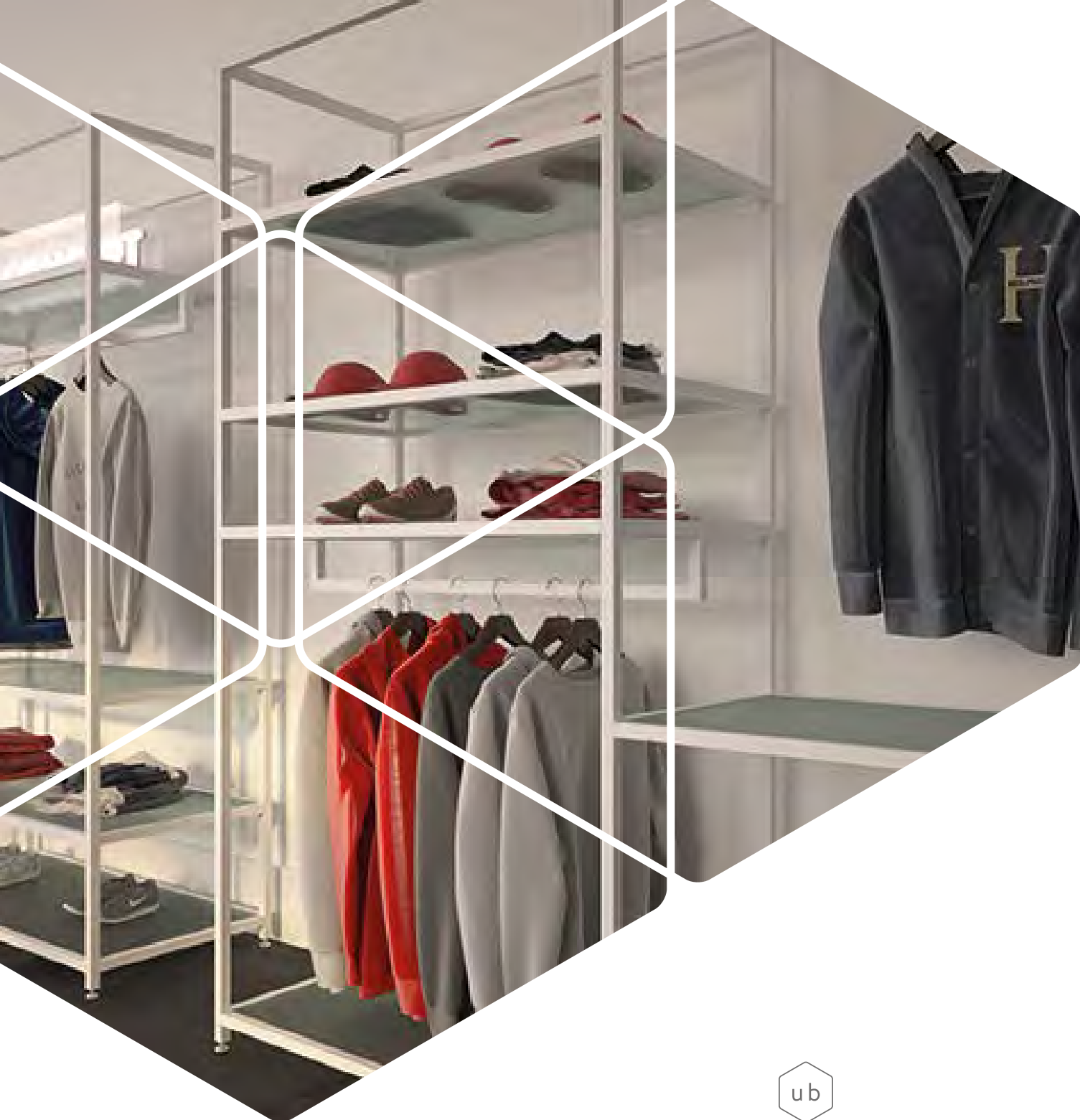
Sol 350 for 350mm apertures



Sol 500

Sol 500 for 500mm apertures





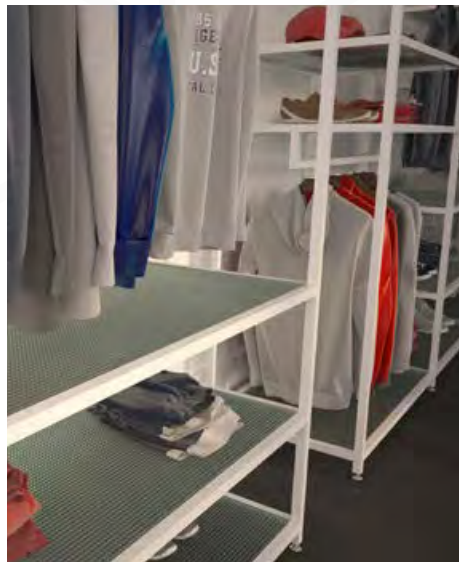
25|25

A flexible system made up of a 25mm box section aluminium profile and an array of angled and perpendicular connectors. The system can be used to create a multitude of structures.

Designed for retail 25/25 can be used in other commercial interior applications such as hotels or food & beverage outlets.

25/25 is a particularly cost-effective way to distribute retail display/storage systems across worldwide destinations, due to its flat-pack properties.

The aluminium profile is available in a variety of finishes, which include powder coating, anodising or plating. Alternatively it can be left in its raw state for a more industrial feel.



Concept #1

25/25 can be used across all retail sectors.

By nature, perimeter shelving can be bulky due to its inherent structural properties and the volume of stock it needs to hold in a small footprint.



Accessories can be built in to suspend garment rails and incorporate shelving that sits flush with the 25mm framework.

Adjustable feet allow for an amount of tolerance should the floor be uneven.



Concept #1_Details

Removing the burden that comes with dealing with welded steel, our 25/25 profile provides a lightweight, flat-pack solution that offers increased flexibility, whilst still maintaining the rigid, stable and strong functional aspects our customers demand.



Concept #2



25/25 is ideal for mid-floor shelving units and window display structures that combine both enticing display merchandise and the more practical necessities such as stock.

It can be finished to stand out as a decorative piece or be more discreet and blend into the surrounding scheme.



Concept #2_Details

The 25/25 system was designed to allow the creation of modular retail fixtures, which in turn enhances in-store flexibility. The structures are super lightweight,

which means re-arranging fixture layout is quick, easy and can be done by shop staff, negating the expense of skilled labour.





System Examples



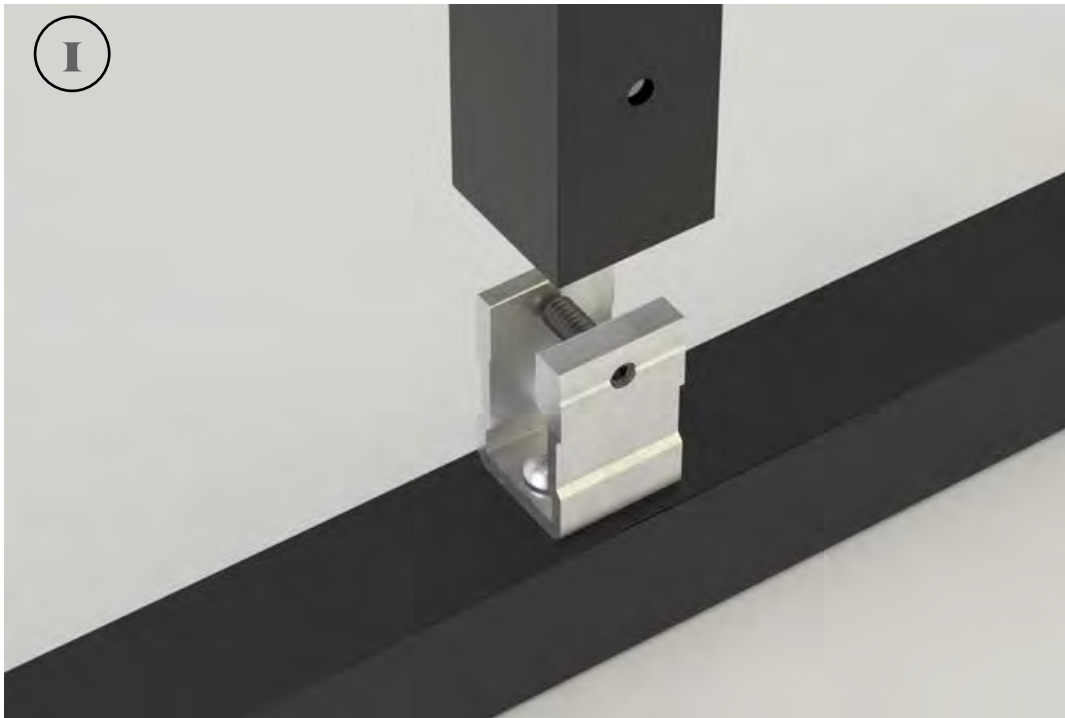
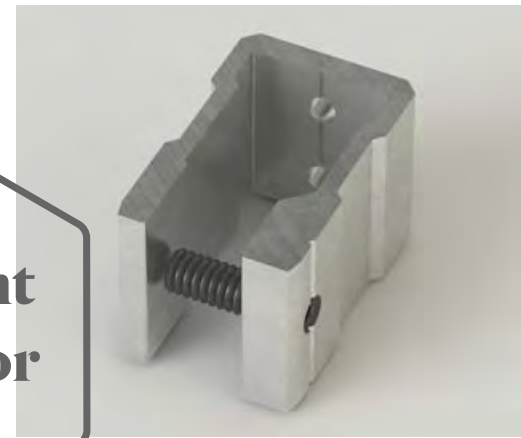
System details

Connectors & accessories

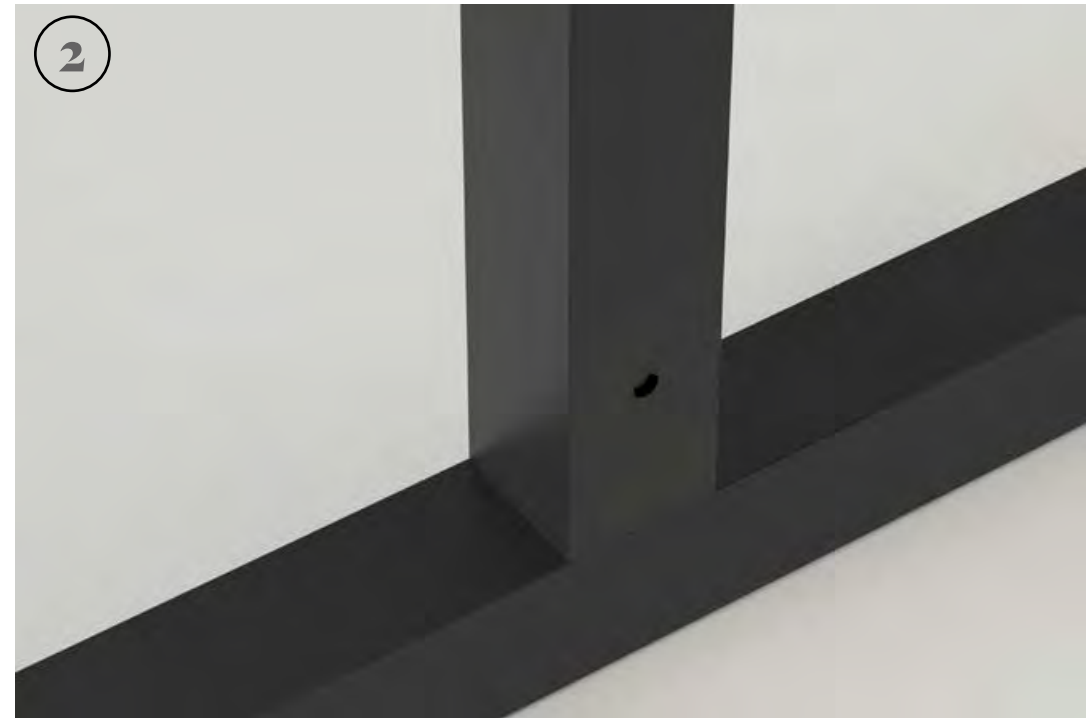
We've designed several connectors to join the 25mm box profile elements.

A butt-joint connector adjoins two perpendicular profiles together.

Butt-joint connector



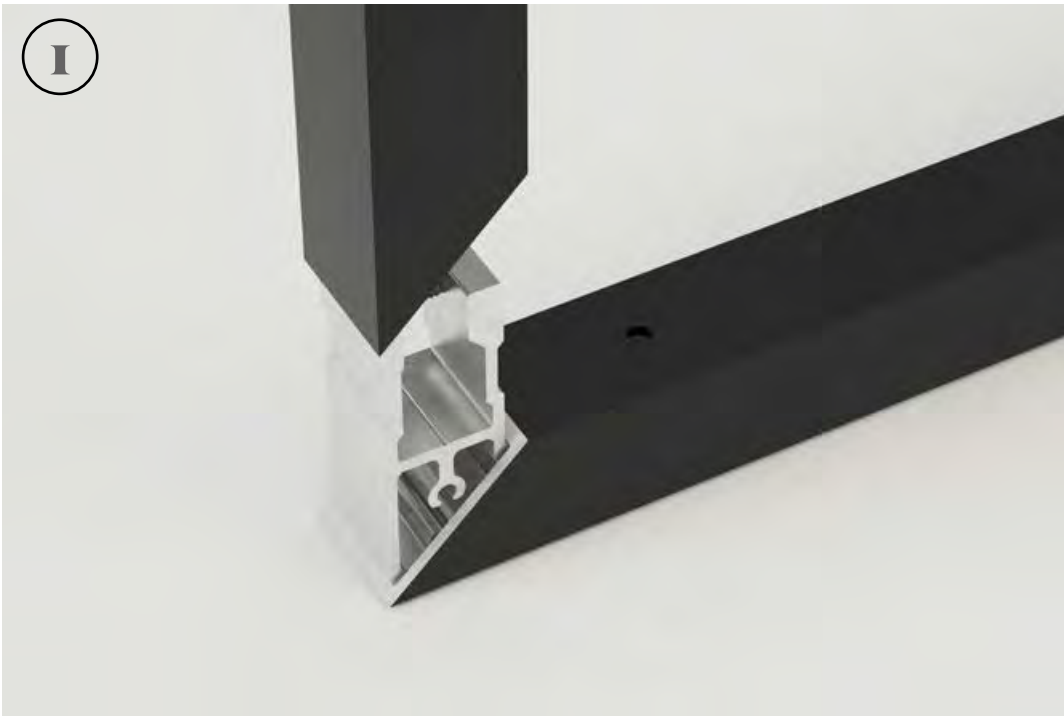
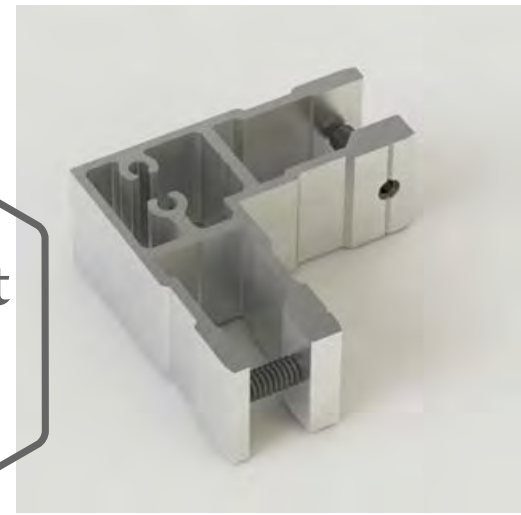
The connector is screwed to first profile.



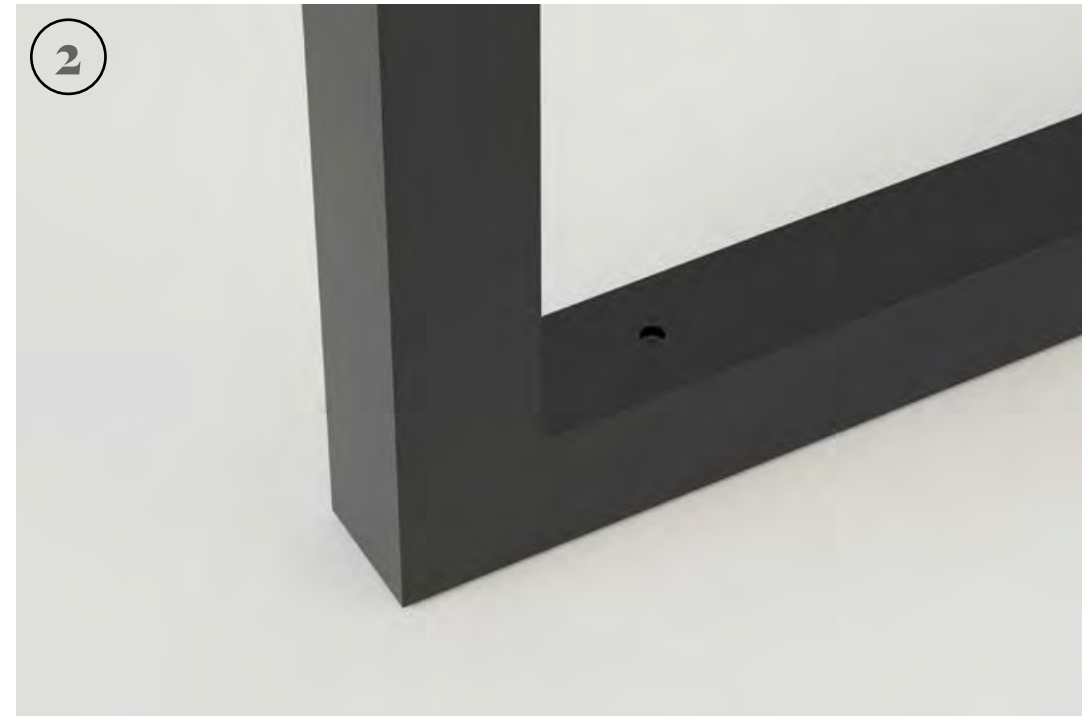
The second profile slides over the connector, making sure it's aligned with the grub screw hole. By tightening the grub screw through a pre-drilled hole, the connector expands to lock the profile in place.

A mitre-joint connector adjoins two perpendicular profiles, where they meet at a 90° corner.

Mitre-joint connector



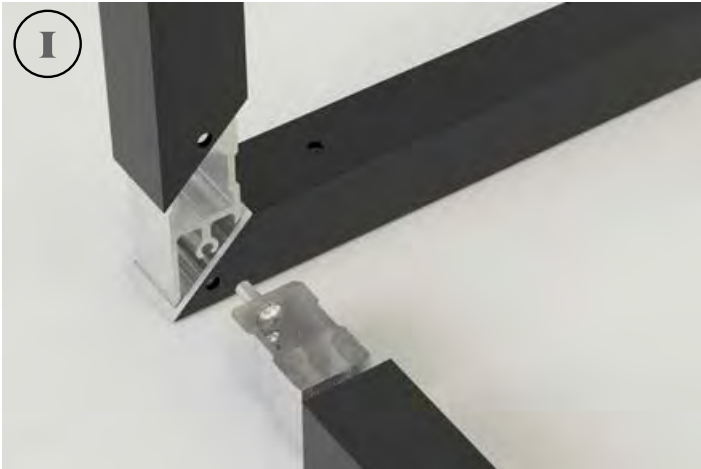
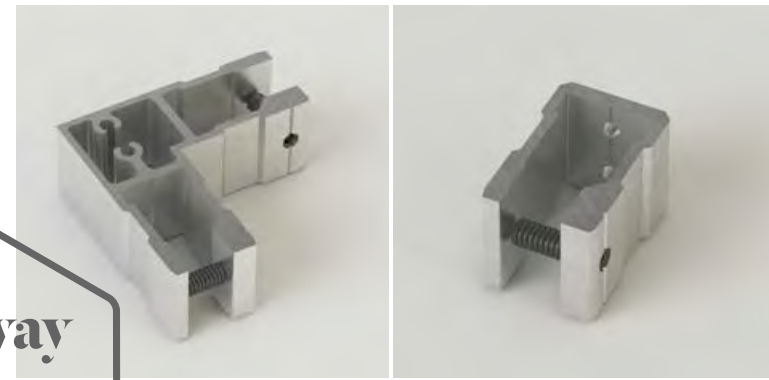
The profiles are both mitre cut to a 45° angle. The mitre-joint connector slides inside both mitred ends.



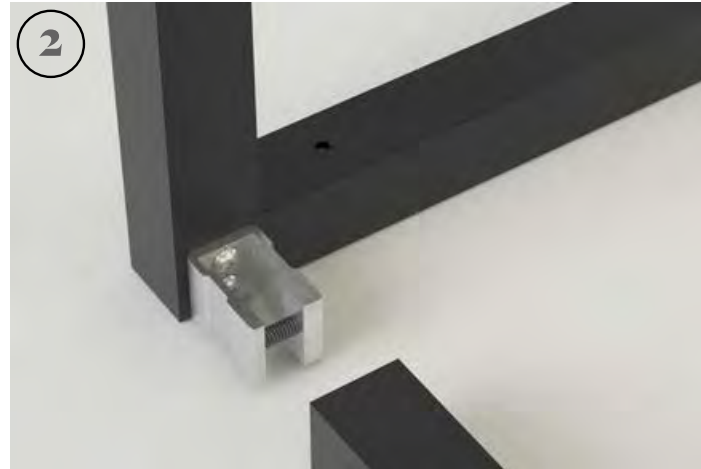
By tightening the grub screw through a pre-drilled hole in each of the profiles, the connector expands to lock the profile in place.

A three-way corner joint can be created using a combination of mitre-joint connector plus a butt-joint connector.

Three-way corner connection



A miter-joint connector is used, as shown previously.



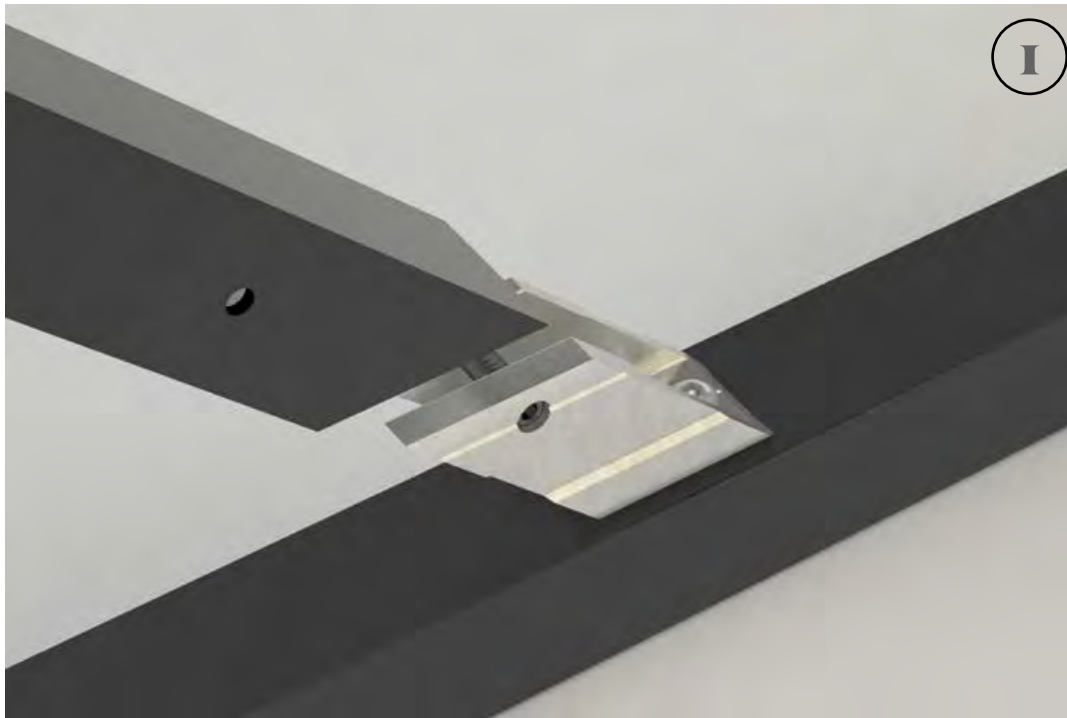
A butt-joint connector is screwed into the corner via the pre-drilled holes.



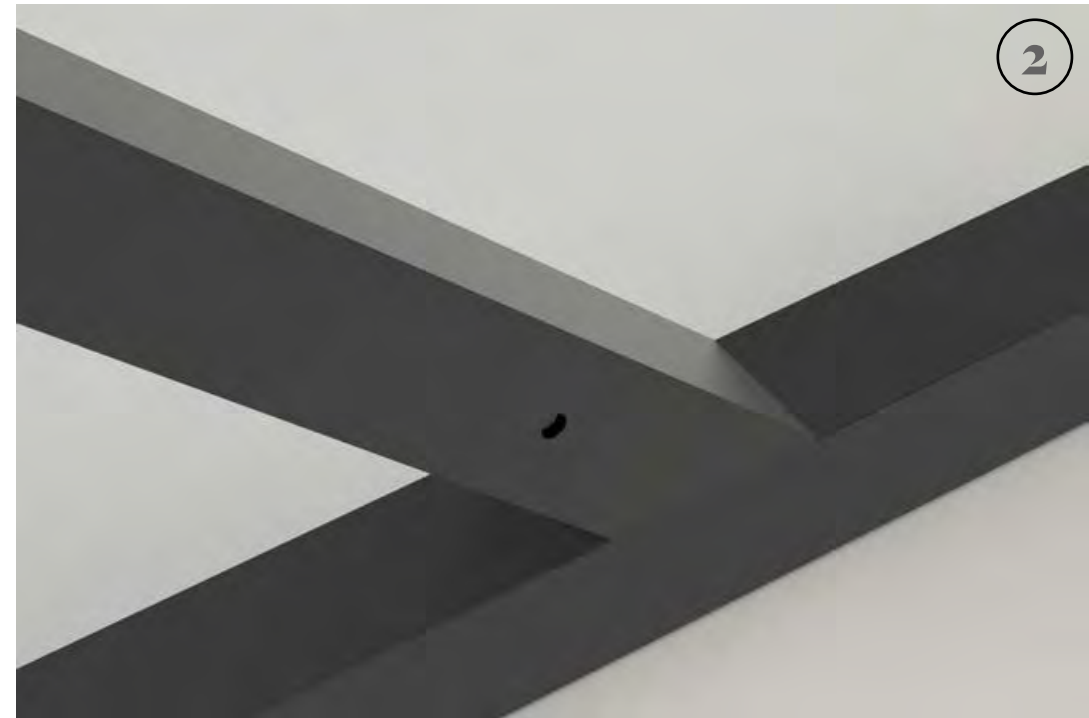
The third profile slides over the connector, making sure it's aligned with the grub screw hole. By tightening the grub screw through a pre-drilled hole, the connector expands to lock the profile in place.

Angled connectors are used to join two profiles, where one end meets the flat edge of another, at specified angles, decreasing limitations often met when designing flat pack structures. Standard angles include 15°, 30° & 45°.

Angled connector



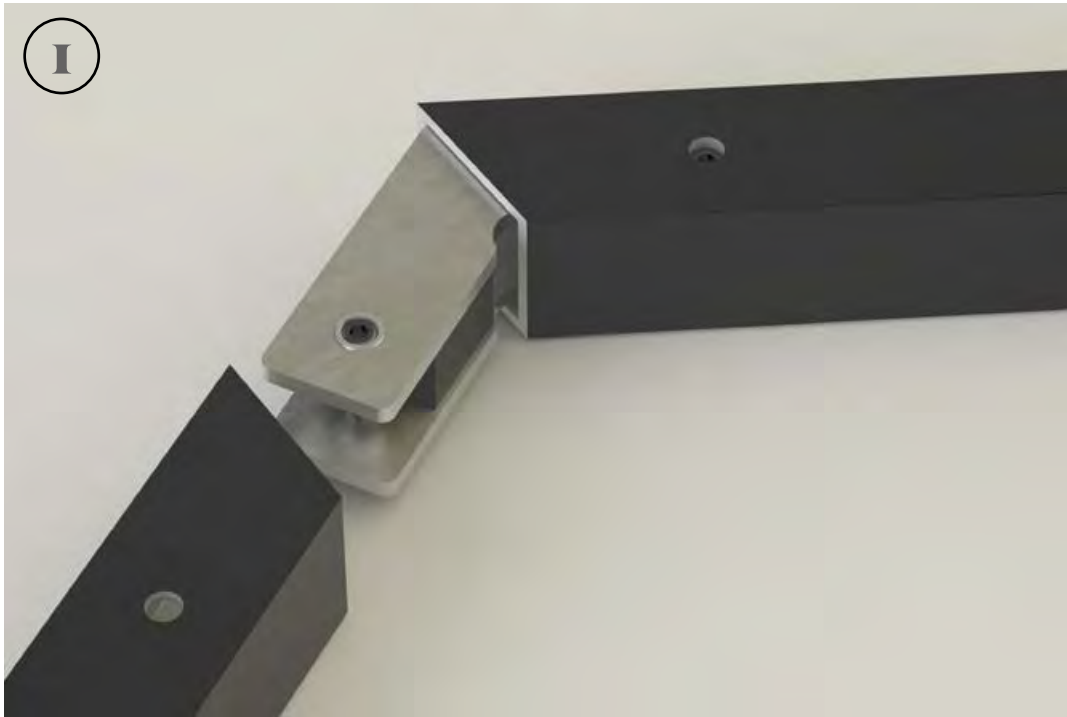
The profile fixing to the connector is mitre cut at the specified angle. The angled connector is screw fixed to the profile.



The mitre cut profile slides over the connector, making sure it is aligned with the grub screw hole. By tightening the grub screw through a pre-drilled hole, the connector expands to lock the profile in place.

We've developed a twin-plate angled connector which allows set angles to be achieved between two adjoining profile ends.

Twin-plate angled connector



The ends of the twin-plate angled connector slide into the two profiles that are to be joined. These profiles will have been mitre cut at the specified angle.

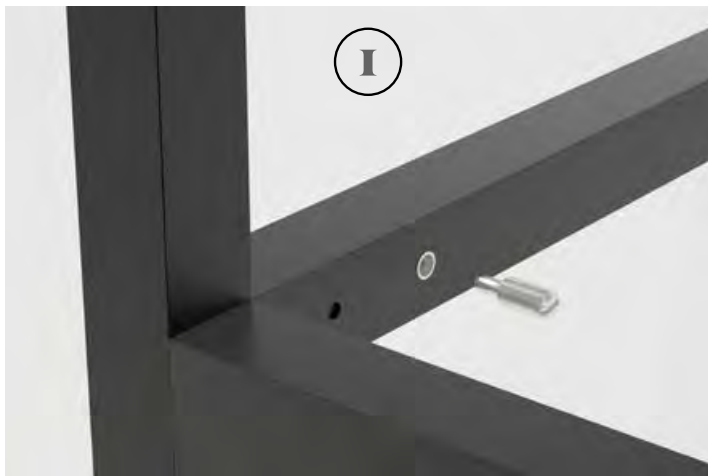


Once in position, the grub screws are tightened to force the connector to expand, thus locking in place. The connector shown above is 120°, however we can produce these at any angle to suit your project.

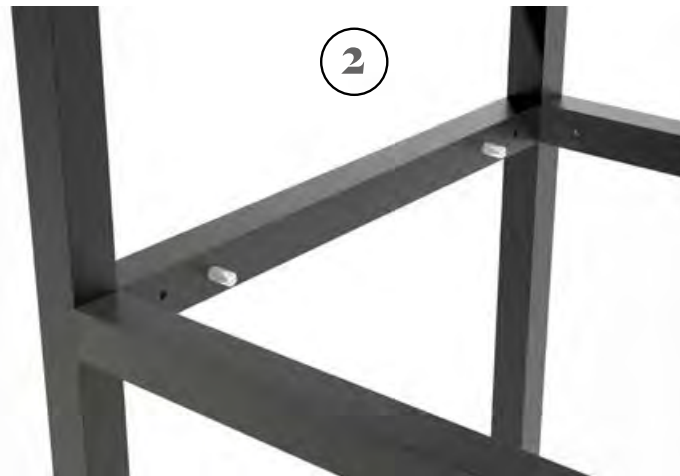
Shelving

There are two ways to incorporate shelving substrates with the 25/25 profile system.

A table/shelf top can simply sit on top of the structure, or alternatively, shelves can sit inboard of the framework, on shelf pegs.



Shelf pegs screw into the inner face of the 25mm box section profile.



At least two shelf pegs are advisable per supported edge.



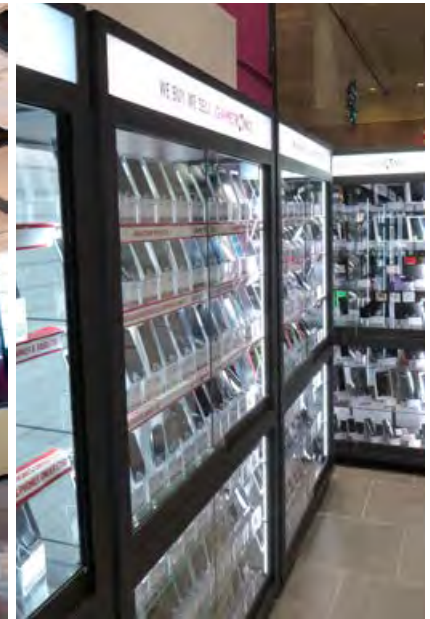
The shelf sits on top of the shelf pegs. Areas of the underside of the shelf are routed to ensure the top of the shelf sits flush with the top edge of the 25mm profile.



Showcases & Cabinets

The versatility of the Unibox modular system allows us to create stunning retail display solutions. Using one single system, we can construct multiple display configurations in a variety of sizes, formats and finishes.

From retail counters, towers, showcases and cabinets, our experienced team works with designers and retailers to meet their individual needs, products and specifications.



Made for Retail

Making sure retailers and their products, stand out from the crowd, our showcases maximise interaction and create an engaging, on-brand customer experience.

Creating a diverse range of layouts, finishes and configurations, each of our standard profiles can be used to give your counter or showcase an individual look and feel.

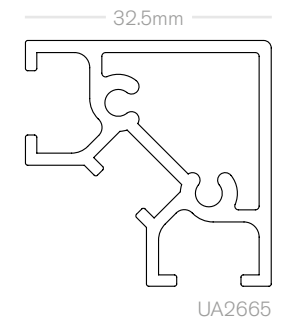
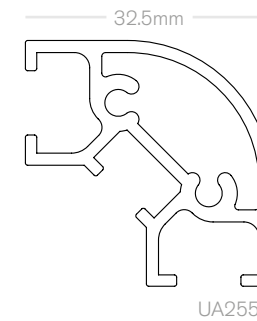
Elite



Elite

A range of squared and rounded showcases, counters and cabinets with a designer finish.

With satin silver, 32.5mm aluminium profile, door locks and counter knuckles, the range can be tailored to the required brand colours.



Full Display Tower Showcase	Height	Depth	Width
UB10 Standard	1932	500	500
UB13 Wide	1932	450	1000

Full Display Tower Showcase	Height	Depth	Width
UB11 Standard*	1932	500	500
UB14 Wide*	1932	450	1000

Three Quarter Display Tower Showcase	Height	Depth	Width
UB25 Standard	1932	500	500
UB26 Wide	1932	450	1000

Three Quarter Display Tower Showcase	Height	Depth	Width
UB12 Standard*	1932	500	500
UB15 Wide*	1932	450	1000



*with header panel & 3 piece downlight set

Elite Counters

Full Display Counter	Height	Depth	Width
UB01	900	600	1000
UB02	900	600	1250
UB03	900	600	1500

Two Thirds Display Counter	Height	Depth	Width
UB04	900	600	1000
UB05	900	600	1250
UB06	900	600	1500

One Third Display Counter	Height	Depth	Width
UB07	900	600	1000
UB08	900	600	1250
UB09	900	600	1500

Solid Counter	Height	Depth	Width
UB44	900	600	1000
UB45	900	600	1250
UB46	900	600	1500



UB01



UB04



UB07



UB44

Elite Corner Counters

Full Display Corner Counter	Height	Depth	Width
UB22	900	810	810

Two Thirds Display Corner Counter	Height	Depth	Width
UB23	900	810	810

One Third Display Corner Counter	Height	Depth	Width
UB24	900	810	810

Solid Corner Counter	Height	Depth	Width
UB47	900	810	810



UB22



UB23



UB24



UB47

Elite Wall Mounted Cabinets

All our wall mounted cabinets are supplied with heavy duty keyhole brackets enabling them to be securely yet discreetly fixed to the wall.

Wall mounted cabinets can be supplied both with and without lighting and can also be supplied with branded or illuminated header panels.

Wall Cabinet	Height	Depth	Width
UB20	1000	250	1000

Wall Cabinet w/Downlights	Height	Depth	Width
UB21	1000	250	1000



UB20



UB21

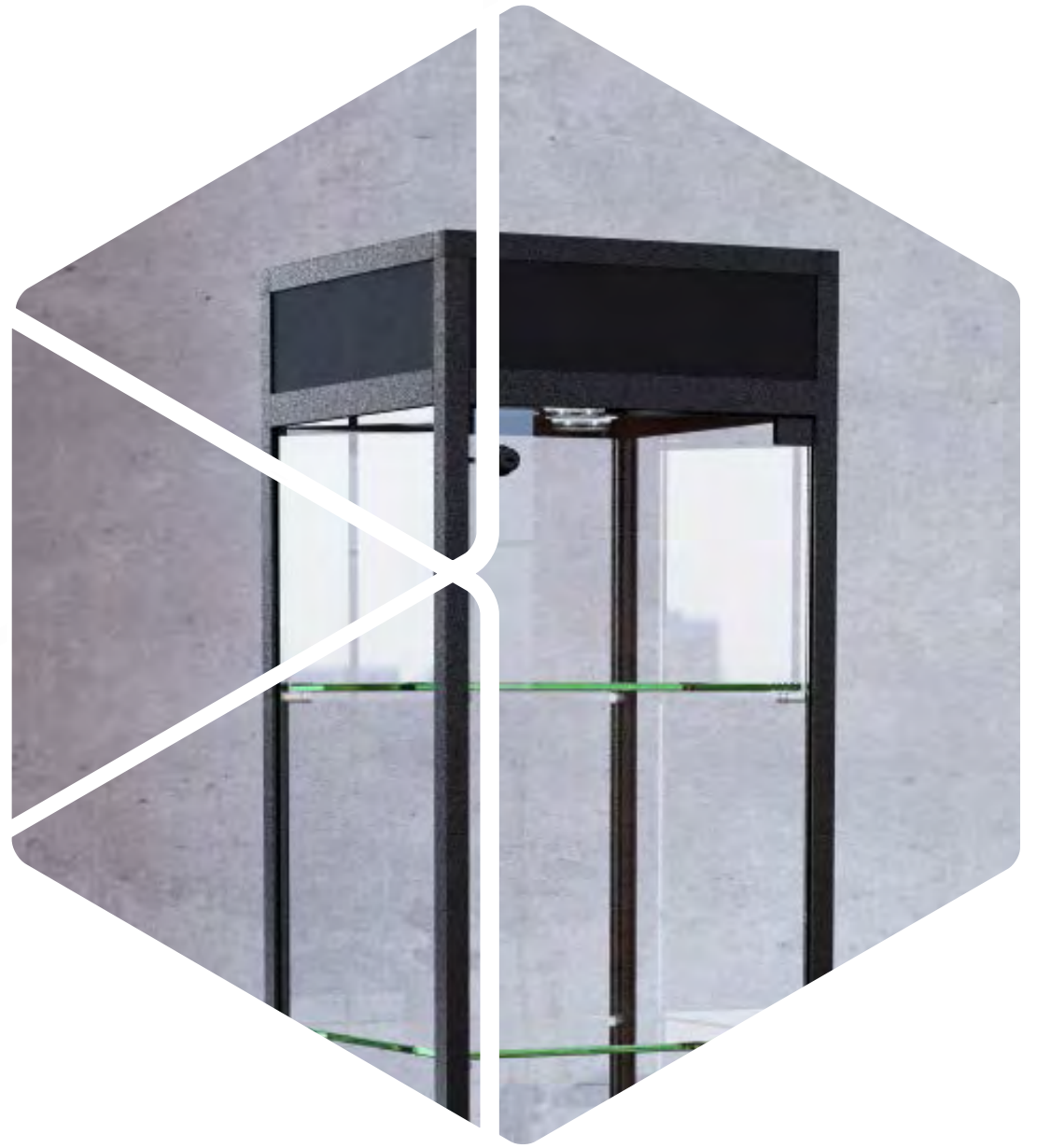


Secure



Lighting

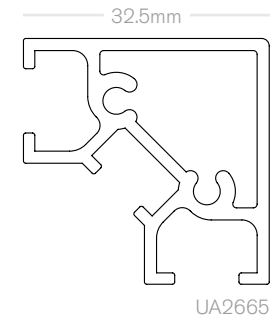
Portobello



Portobello

The Portobello range of showcases, cabinets, and counters features matt black, 32.5mm aluminium profile, and industrial-themed accessories.

The sizes available are perfect for a range of applications, including retail displays and kiosks. The display units can also be reconfigured for use as till points, counters, and corner units.



Full Display Tower Showcase	Height	Depth	Width
PB10 Standard	1932	500	500
PB13 Wide	1932	450	1000

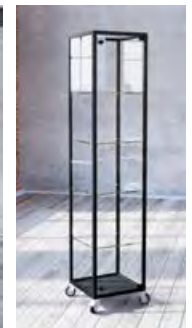
Full Display Tower Showcase	Height	Depth	Width
PB11 Standard*	1932	500	500

Three Quarter Display Tower Showcase	Height	Depth	Width
PB25 Standard	1932	500	500
PB26 Wide	1932	450	1000

*with header panel & 3 piece downlight set



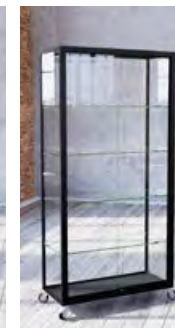
Portobello Range



PB10



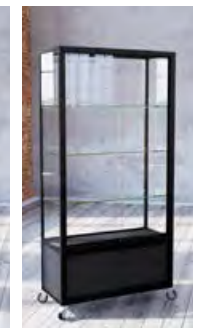
PB11



PB13



PB25



PB26

Portobello Counters



Full Display Counter	Height	Depth	Width
PB01	900	600	1000



One Third Display Counter	Height	Depth	Width
PB07	900	600	1000

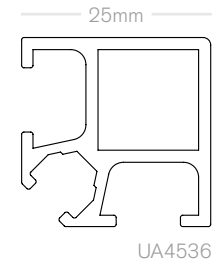
Edge



Edge

Our slimline Edge range is easily customisable and reconfigurable.

Our standard cabinet range features satin silver, 25mm aluminium profile, door locks and counter knuckles, and can be tailored to the required brand colours.



Full Display Tower Showcase	Height	Depth	Width
UB10 Standard	1932	500	500
UB13 Wide	1932	450	1000

Full Display Tower Showcase	Height	Depth	Width
UB11 Standard*	1932	500	500
UB14 Wide*	1932	450	1000

Three Quarter Display Tower Showcase	Height	Depth	Width
UB25 Standard	1932	500	500
UB26 Wide	1932	450	1000

Three Quarter Display Tower Showcase	Height	Depth	Width
UB12 Standard*	1932	500	500
UB15 Wide*	1932	450	1000

*with header panel & 3 piece downlight set



UB10

UB11

UB25

UB12



UB13

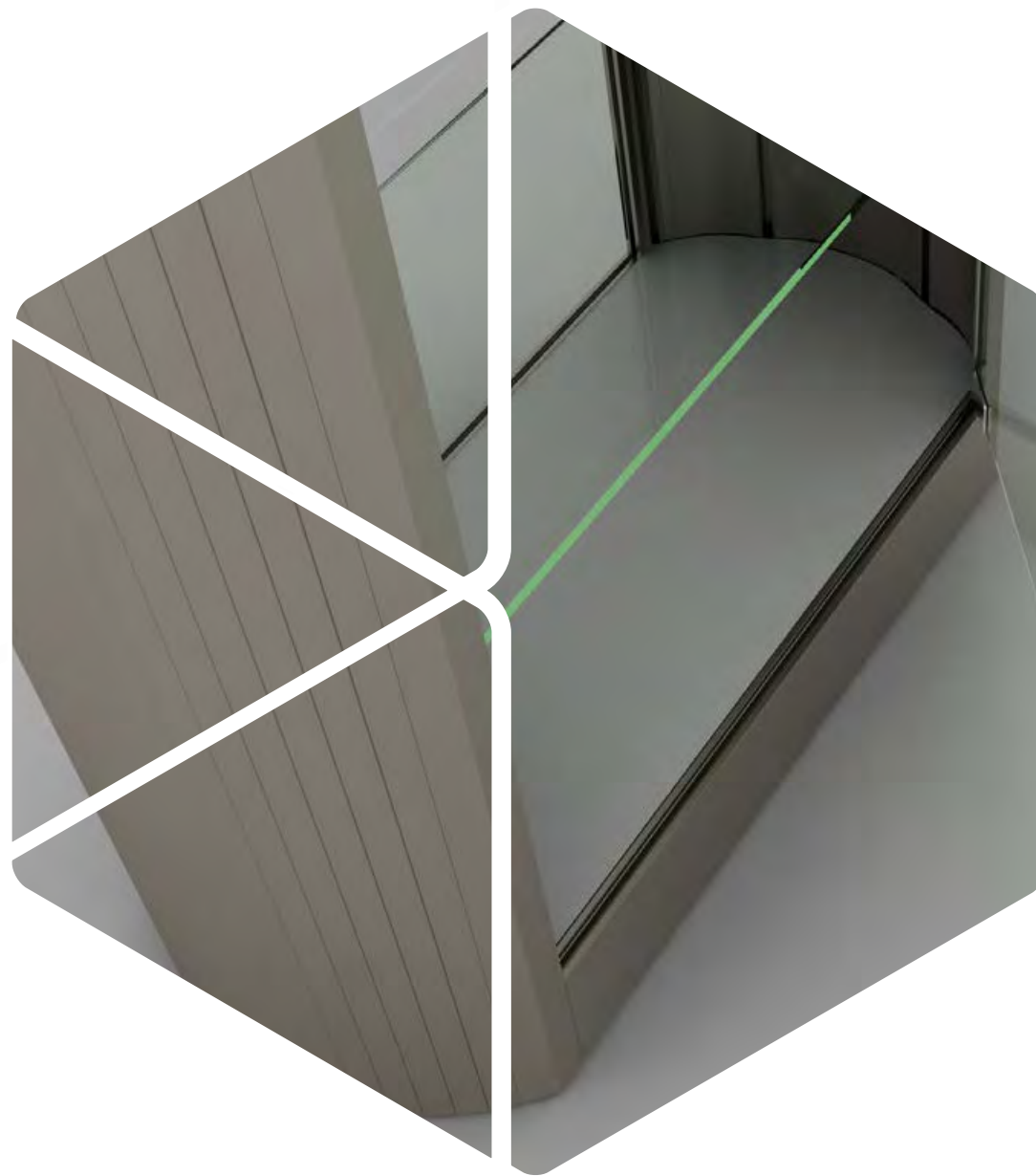
UB14

UB26

UB15



Icon



Icon

Our Icon range maximises available retail space, without compromising on aesthetics, with slimline, curved aluminium profiles, and feature glass display doors.

Icon provides a secure glass display suitable for a broad range of high value or fragile goods, while creating maximum visual impact.

Perfect for displaying smaller products, due to the toughened glass doors, items can be merchandised from both sides, allowing for maximum flexibility.

IC10 Standard Tower Showcase

Height	Depth	Width
1993	317	735

IC13 Wide Tower Showcase

Height	Depth	Width
1993	317	1135



Blade

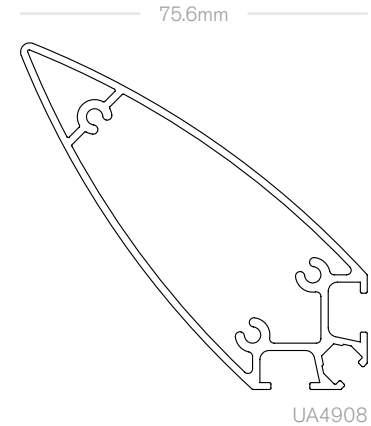


Blade

With aerofoil shaped corner profiles, our Blade range is particularly suitable for product promotions.

The range can be combined with graphic displays to create stunning and highly individual retail display units.

Blade can be customised with bespoke acrylic end caps, LED lighting, and various integrated storage options.



Full Display Tower Showcase	Height	Depth	Width
UB10 Blade	1932	586	586
UB11 Blade*	1932	586	586
Three Quarter Display Tower Showcase	Height	Depth	Width
UB25 Blade	1932	586	586
UB12 Blade*	1932	586	586
Full Display Tower Showcase <small>(wide)</small>	Height	Depth	Width
UB13 Blade	1932	436	1086
UB14 Blade*	1932	436	1086
Three Quarter Display Tower Showcase <small>(wide)</small>	Height	Depth	Width
UB26 Blade	1932	436	1086
UB15 Blade*	1932	436	1086

*with header panel & 3 piece downlight set

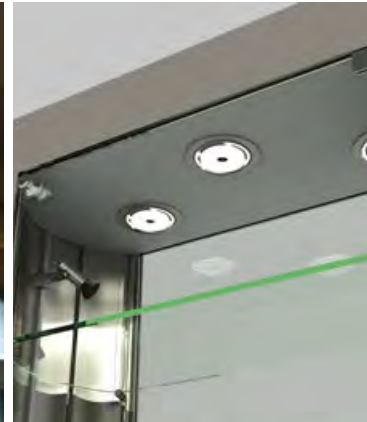


Details

Our showcases, cabinets and counters can be made with a range of integrated features:



Illuminated Header Panels



LED Downlighting



Tilt Glide Feet



Integrated LED Lighting



High Quality Locks



Twin Wheel Swivel Castors



Precision Die Cast Corner Details

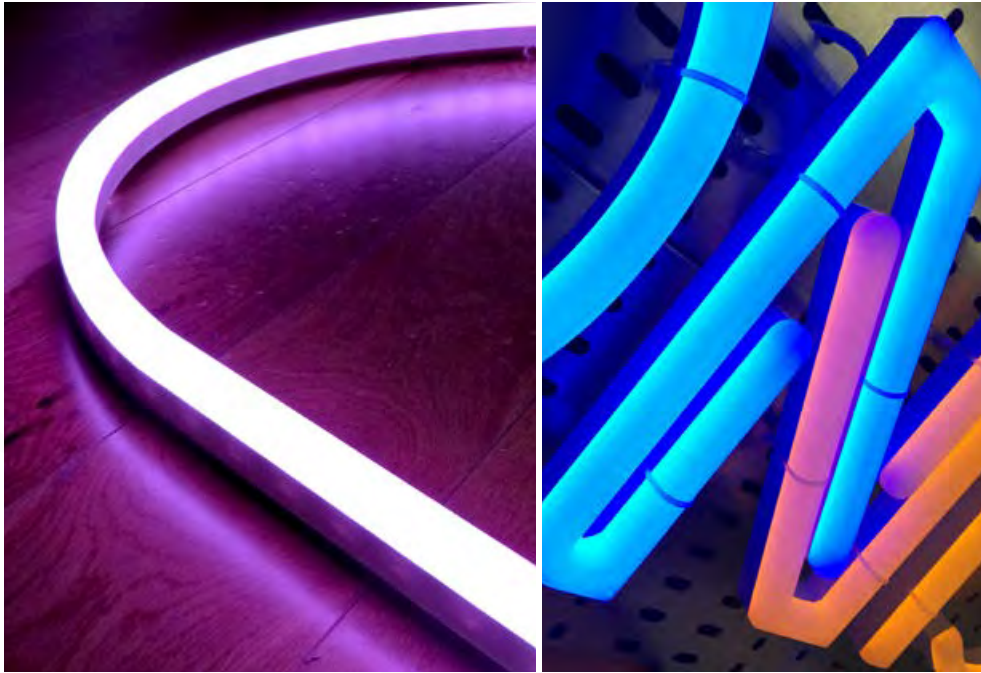


Neonist

Creating stunning, evenly illuminated retail displays, with Neonist. Designs can be translated with accuracy and more precise shaping than ever before. All this with the energy efficient, long life properties of LED lighting.

With neon signage enjoying somewhat of a renaissance with both independent and multiple retailers alike, Neonist is an illuminated signage solution with all of the glamour of neon, but none of the shortcomings of last century's technology.





Neonist

Neonist is constructed using solid acrylic lettering, not thin glass tubing, making it robust.

It uses laser and CNC-etching processes to create custom letters, machined from 30mm acrylic with the LED embedded within them. This allows for the creation of curved and straight edge corners, depending on the design.





DENIM

LED Illumination

Our relationship with Lumenal; Unibox's specialist LED lighting sister company, that – when it comes to lighting - colour temperature, brightness levels, light distribution, and power management are all considered as part of the final design.

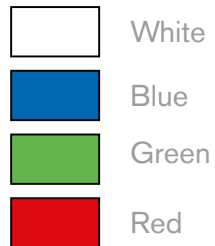
Details

The optimal 'stroke' width is 19mm and this must be kept constant. A 6.5mm cutter is used for the machining which gives a minimum radius of 3.25mm.

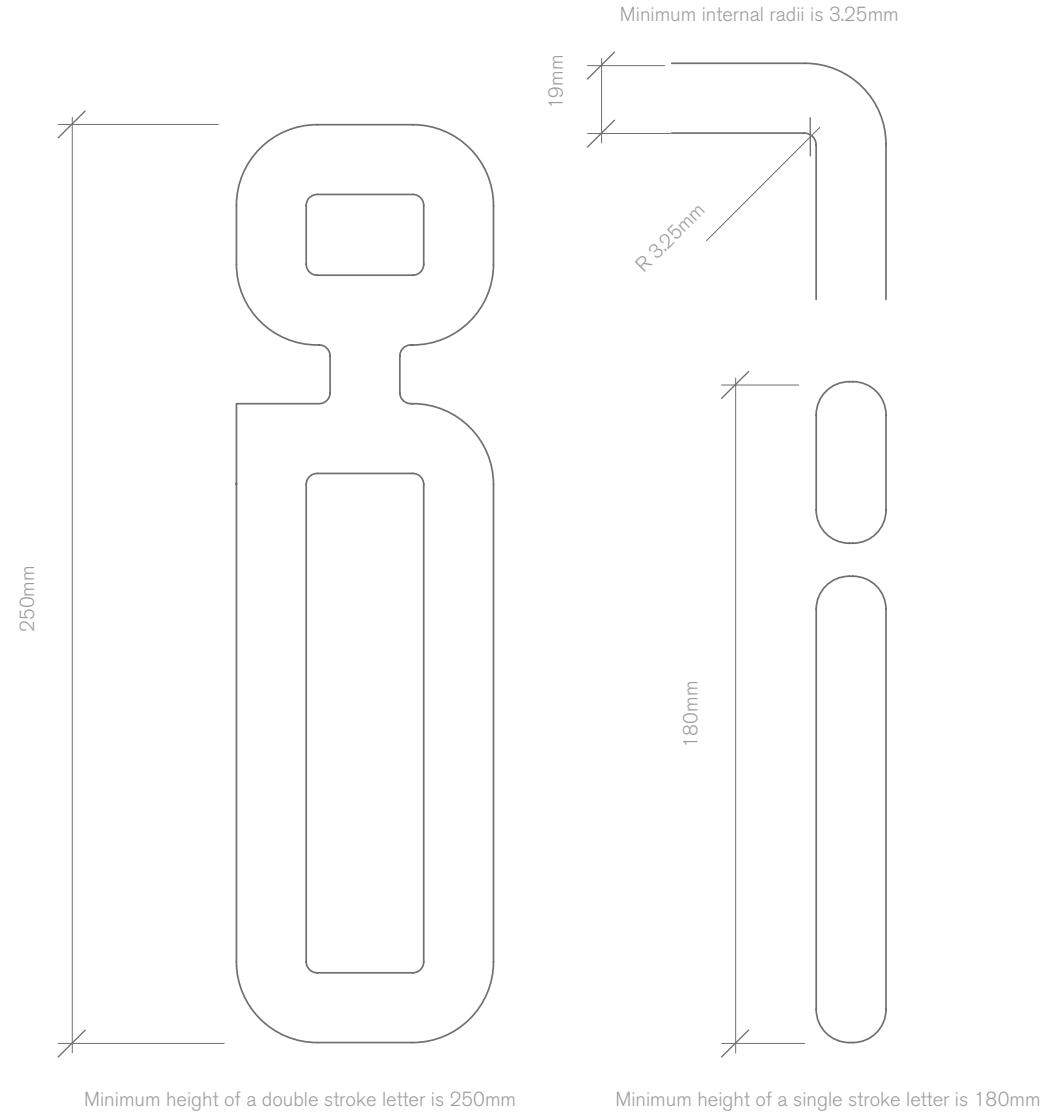
The end result is bespoke signage with a range of casing options – from acrylic boxes to mounted aluminium frameworks.

There are various colour options available using Neonist, which can be configured with either white acrylic lettering featuring coloured LED illumination, or white LED with coloured acrylic.

LED colours



Acrylic colours



Custom Colours

In addition to our standard range of colours, we can also create Neonist to match specific colours. Utilising addressable LED technology, Lumenal can programme custom LED strips to match your brand or store theme.





Kontakt

Movable, illuminated shelving, that ensures products are perfectly lit

There are no wires, no connectors and no need for costly electrical specialists or shopfitters, Kontakt is used to keep stores on brand, with flawlessly illuminated products.

Kontakt was awarded 'Interior Luminaire Product of the Year' at the 2015 Lux Awards, and has been shortlisted for the Retail Design Expo Innovation Trail & Awards 2016.





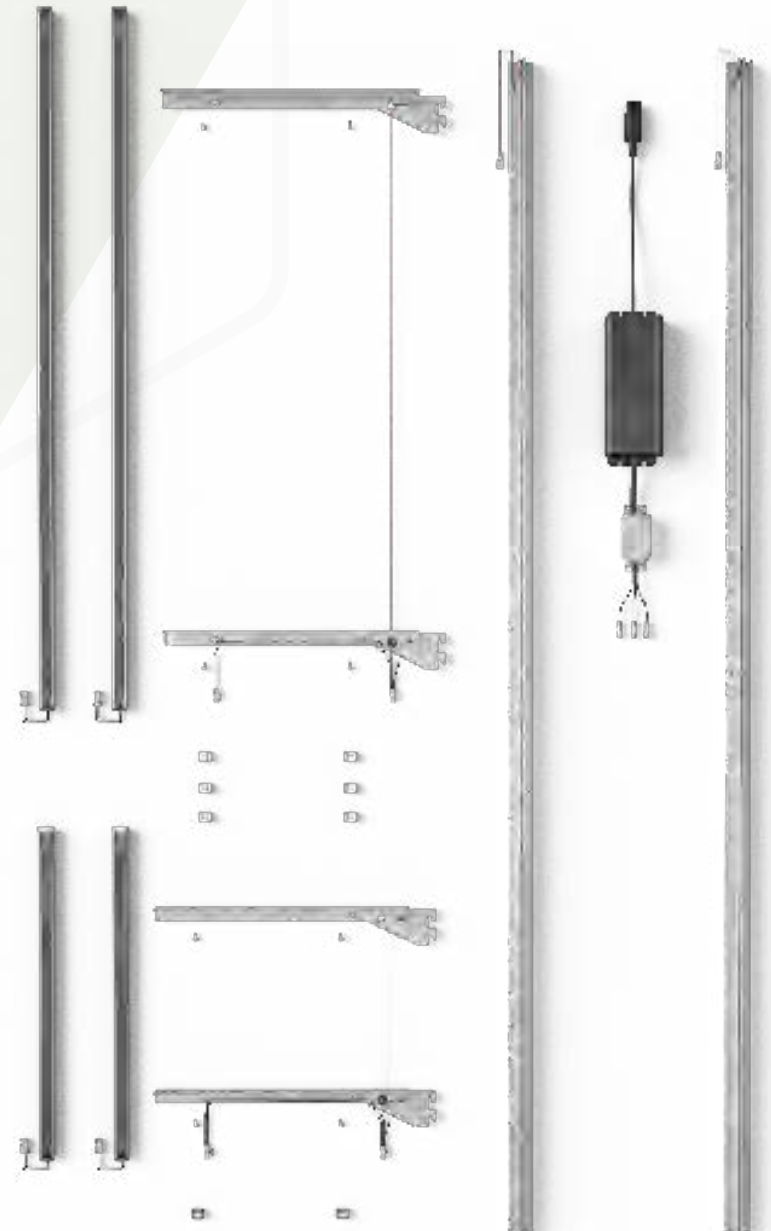
How it works

While simple to use, Kontakt is the culmination of some very creative electrical engineering and lighting ingenuity.

Running off a flexible track system, Kontakt allows power to flow in either direction across the LEDs. This means shelves can be moved and products merchandised in a far less regimented way than ever before.

With powder coat based technology that gives the perfect level of insulation, the result is elegance of design, without bulky plastic extrusions.

Using specialist alloy brackets to allow maximum current into the electrical cables and luminaires, as well as being super conductive, Kontakt is also designed to support heavy products.



Integrated Illumination

Integrated LED luminaires, created with bespoke lighting configurations specific to your products, illuminate the minute a shelf is put into place, with no wires or connectors.



Fixed shelves with no integral luminaire



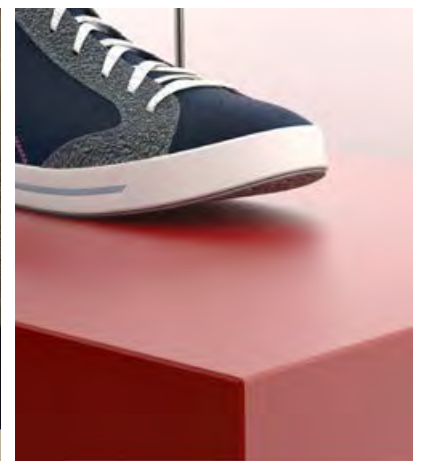
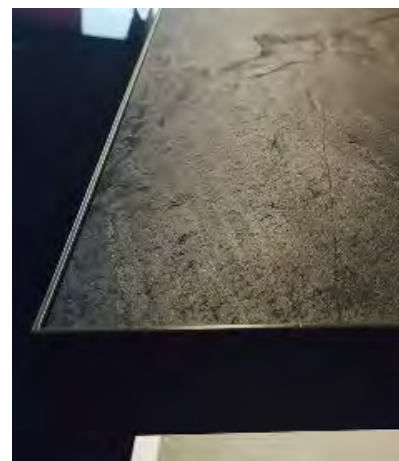
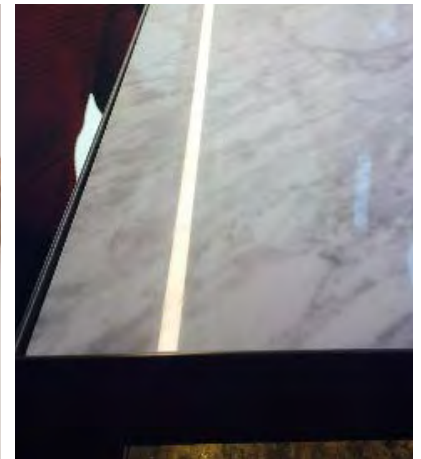
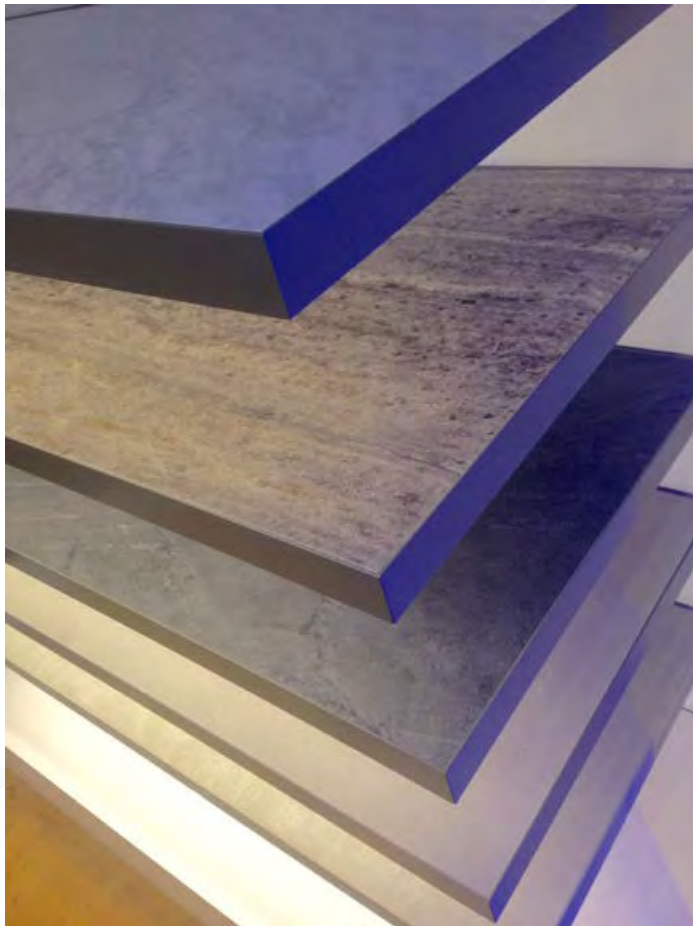
Fixed shelves with single integral luminaire



Fixed shelves with double integral luminaire

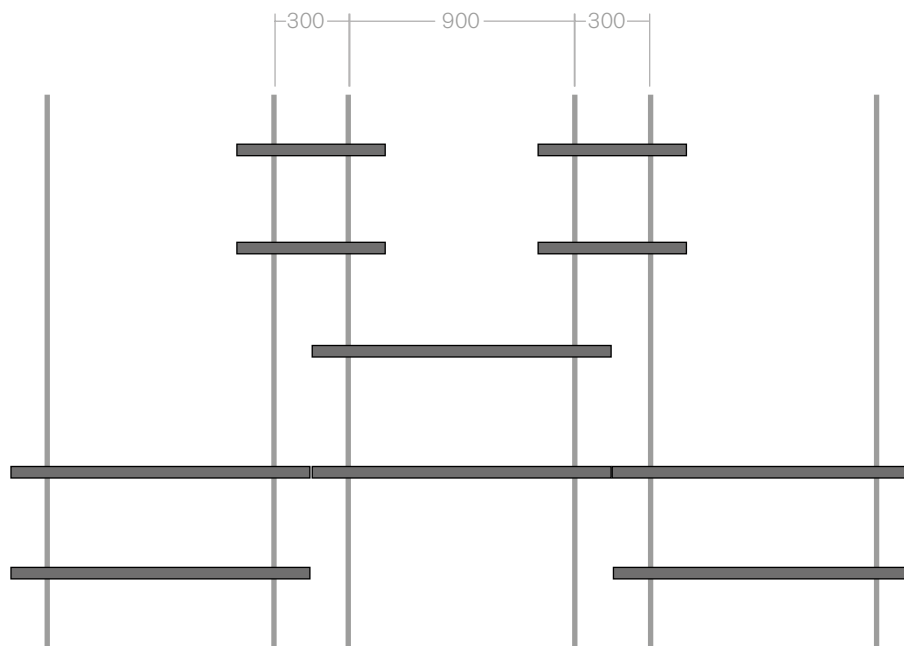
Choice of finishes

You choose. It can be painted, lacquered, foiled, laminated or covered in fake fur - if that's your thing.



Layout Options

900mm and 300mm Combination

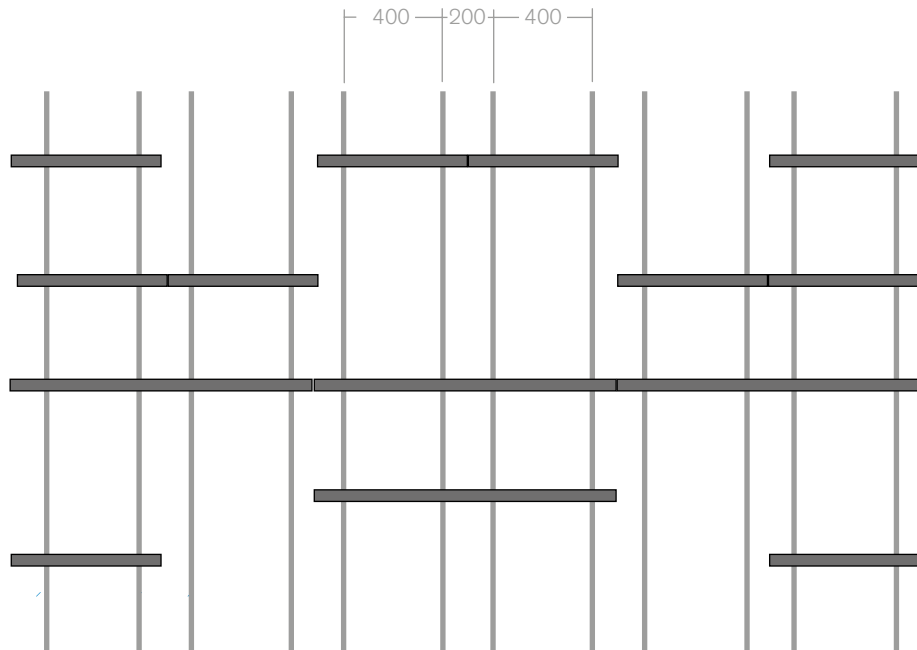


The system is offered with 600mm and 1200mm shelves.



Layout Options

400mm and 200mm Combination

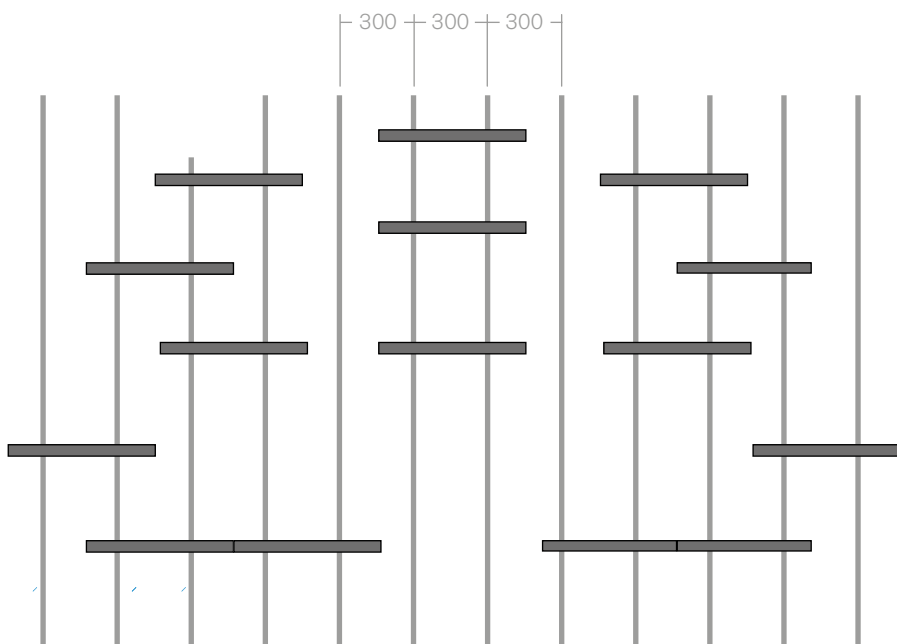


The system is offered with 600mm and 1200mm shelves.



Layout Options

300mm and 300mm Combination



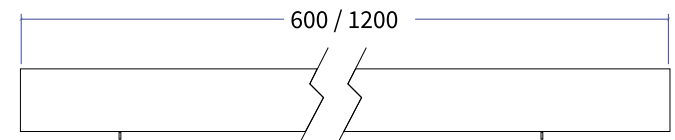
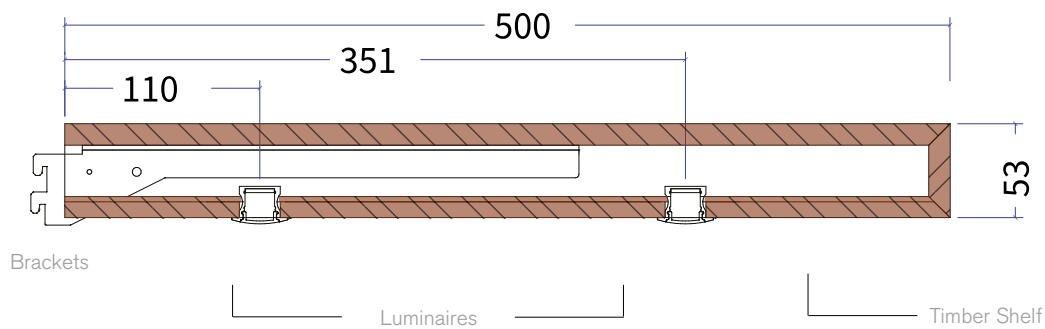
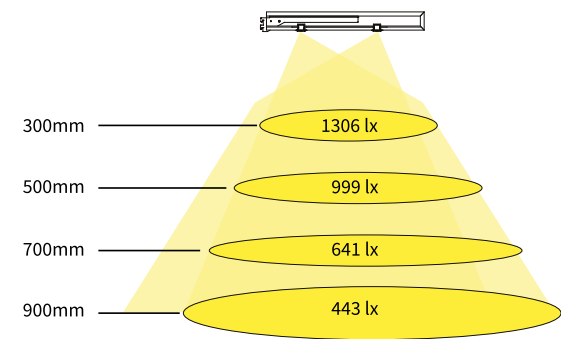
The system is offered with 600mm and 1200mm shelves.



Shelf Details

	600mm Complete Shelf			1200mm Complete Shelf		
Rated voltage	24V DC			24V DC		
Rated current	0.76A			1.62A		
Rated power	20W			40W		
LED Manufacturer	Samsung			Samsung		
LED Colour Temperature	3000°K	3500°K	4000°K	3000°K	3500°K	4000°K
Colour Rendering Index	80	90	90	80	90	90

Maximum shelf weight = 25 kg



Track Details

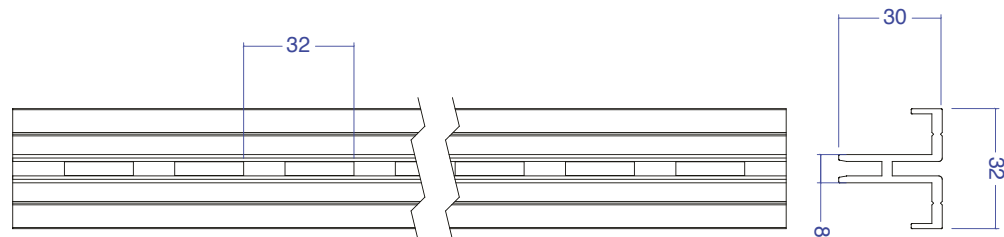
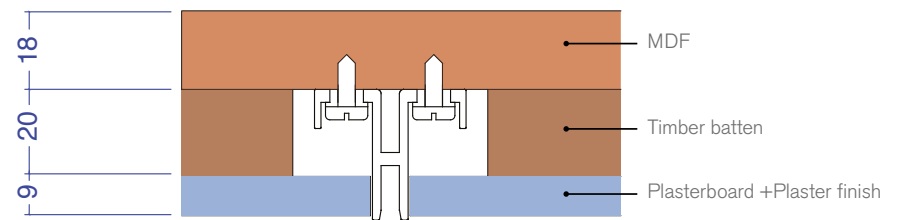
The track can be mounted in a variety of ways to suit your retail designs and manufacturing methods.

Our track has a 32mm pitch which allows for virtually infinite shelf adjustment.

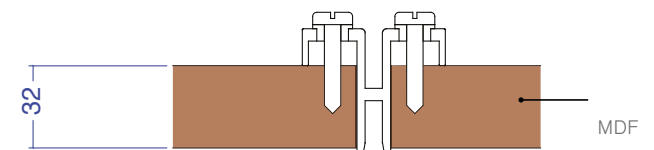
System Details

Rated voltage	24V DC
Rated current (brackets)	6A
Rated current (track)	16A
Track	Class III
Track must be connected to a SELV supply only	

FIXING TO PLASTER FINISH



REVERSE MOUNTED FIXING METHOD



Shelf Matrix

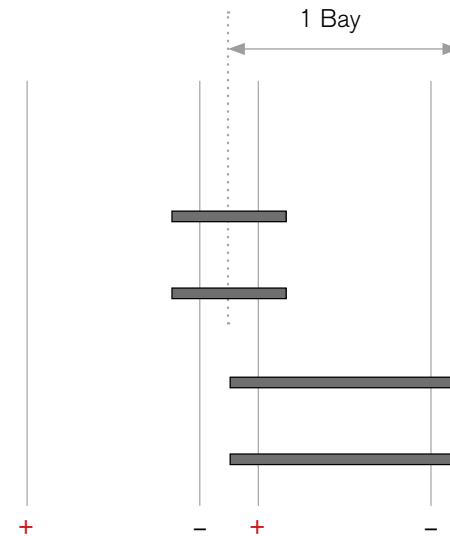
- Available
- Not available
- Example (right)

900/300 and 400/200 layouts

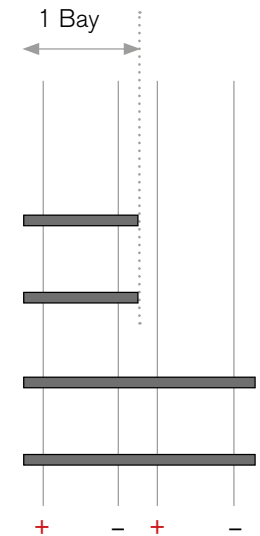
Maximum number of shelves per bay based on 2400mm uprights.

600mm Shelf	1200mm Shelf					
	0	1	2	3	4	5
0	●	●	●	●	●	●
1	●	●	●	●	●	●
2	●	●	●	●	●	●
3	●	●	●	●	●	○
4	●	●	●	●	●	○
5	●	●	●	●	○	○

900/300 Layout



400/200 Layout



Shelf Matrix

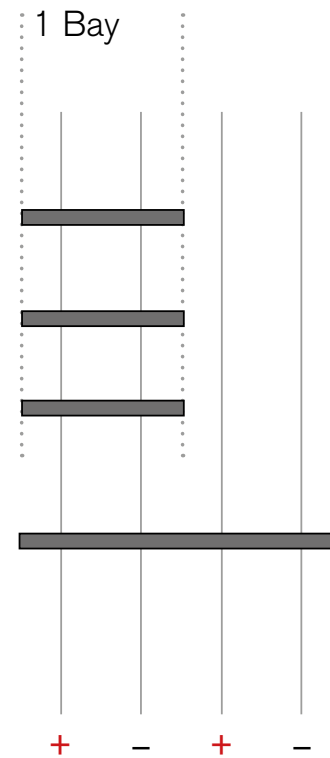
- Available
- Not available
- Example (right)

300/300 layout

Maximum number of shelves per bay based on 2400mm uprights.

		1200mm Shelf			
		0	1	2	3
600mm Shelf	0	●	●	●	○
	1	●	●	●	○
	2	●	●	○	○
	3	●	●	○	○
	4	●	○	○	○
	5	●	○	○	○

300/300 Layout



u n i b o x

Get In Touch

0161 655 2121
info@unibox.co.uk
www.unibox.co.uk

HQ:

Greenside Way, Middleton, Manchester, M24 1SW

LDN:

Finsbury Business Centre, Bowling Green Lane,
Clerkenwell, London, EC1R 0NE

