

- Certified quality
- Versatile and economical

■ GETO® City body kit

A high-performance solution for Sprinter Class vehicles



GETO® City body kit



GETO® City – the ideal body kit for Sprinter Class vehicles

Thanks to its innovative design, low weight and assembly principle, the GETO City body kit is sure to impress: by using state-of-the-art bonding technology, the design ensures certified quality together with an elegant appearance. Standard kits are available with either clamped aluminium, sandwich or Ultra panels. An anti-slip and smooth self-supporting base can also be ordered as an optional extra.

The external appearance of the GETO City is very impressive: Free of any rivets or bolts, the walls and doors have smooth surfaces. The complete body kit is supplied powder-coated in MB 9147 (arctic white). The flush edges of the side walls, bulkhead and cantrails, as well as the concealed self-supporting base can also be ordered as an optional extra.

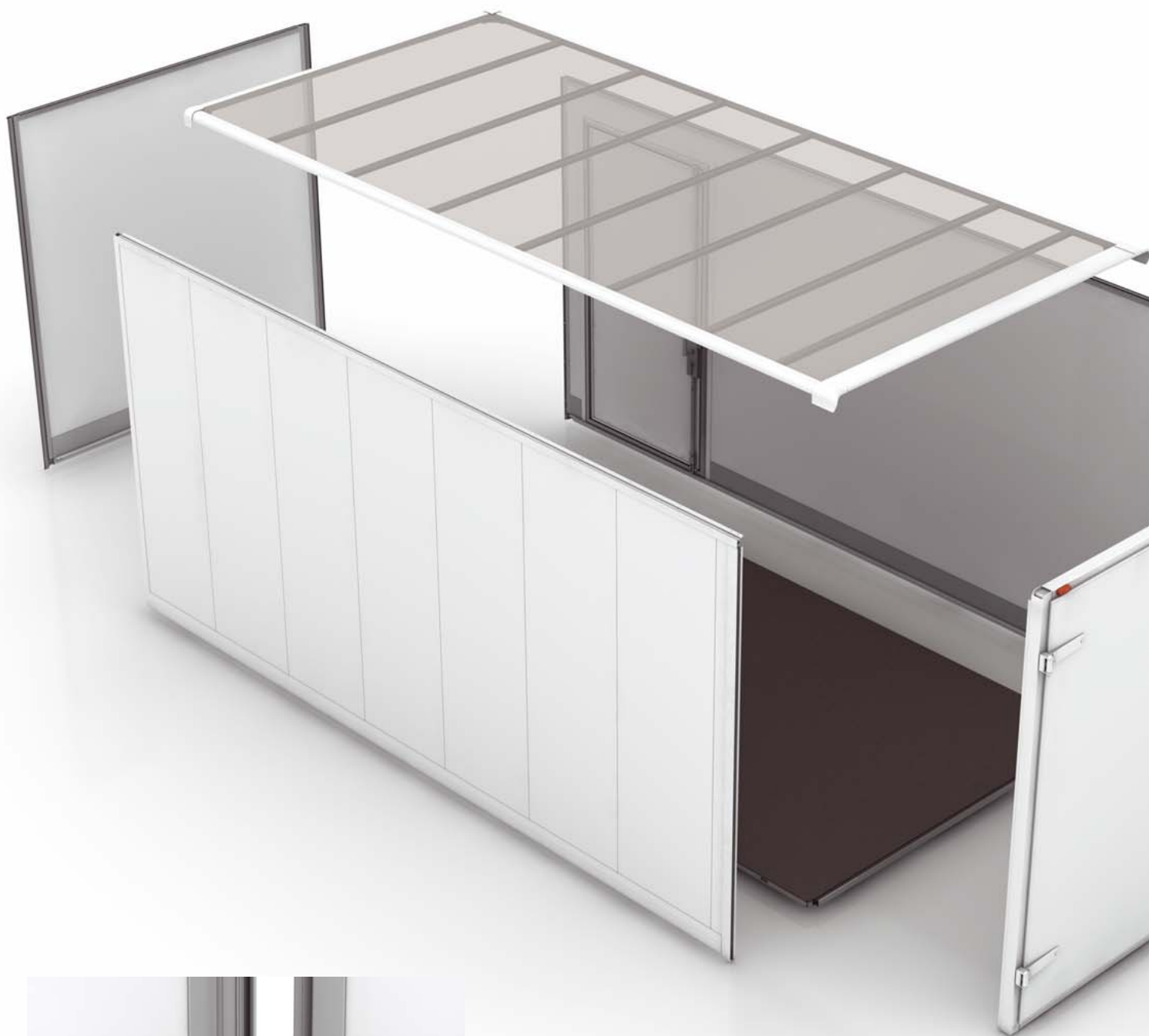
Flexible and variable – ideal for courier and parcel delivery services

GETO City class offers extra flexibility, thanks to the possibility of integrating doors and flaps in the side walls depending on the intended usage. This also makes the design suitable for all manner of sales and advertising vehicles. The components can be positioned flexibly and adapted, to a large extent, to existing individual dimensions. The side doors, which are designed to ensure trouble-free loading and unloading, can be supplied either with standard hinges or our thoroughly tried-and-tested TILA door hinges. They can also be fitted with a sliding bar lock. The GETO City range is also available with an optional tail-lift sealing profile with integrated profile for the tail-lift mechanism.

Quick and easy installation

Assembly of the body kit only requires mechanical fastening inside the body. All assembly holes are provided. There is no need to seal the individual components: only the front and rear corner castings need to be bonded by the bodybuilder. Cargo control pans and tracks are already installed, exactly where you need them.





Bulkhead and side wall

- Available in aluminium, sandwich and Ultra panels
- Integrated kick strip in the wall

Fittings

- Cargo control pans and tracks
- Internal cladding: 6 mm plywood (only for standard aluminium); internal cladding coated with phenolic resin (only for standard aluminium)
- Doors and flaps in side wall

Roof

Roof frame

- Aluminium cantrail
- Aluminium cross-member
- Roof skin is GRP (translucent) or aluminium (bonded), additionally secured using a clip system

Roof fittings

- Ceiling lights (supplied loose)

Sandwich roof 30 mm

- Aluminium cantrail

Roof fittings

- Ceiling light fitting



Rear door frame

Rear door frame

- Aluminium corner posts and top member
- Width of corner post 60 mm
- Bottom members always 70 mm high; floor recess 18 mm, 21mm and for self-supporting base
- Bottom member made of galvanised steel; optionally available in stainless steel

Rear options

Doors

- Aluminium, double-leaf, with recessed lock (galvanised steel)

Tail-lift flap

- Aluminium; gas springs included

Brake light

- Third LED brake light (supplied loose)



GETO® City body kit

Wide range of bodywork options

	Length L1 [mm]	Overall dimensions	
		Width B1 [mm]	Height H1 [mm]
Clamped aluminium	3000 – 5100	1805 – 2355	1775 – 2500
Ultra 14 mm	3000 – 5100	1800 – 2355	1775 – 2500
Ultra 17 mm	3000 – 5100	1800 – 2355	1775 – 2500
Sandwich panel 25 mm	3000 – 5100	1800 – 2355	1775 – 2500

Intermediate dimensions in intervals of 25 mm



GETO City body kits are supplied to the bodybuilder ready for assembly, on transport racks that are easy to handle and store. Short unloading times, secure temporary storage and shortened assembly time ensure cost savings for the bodybuilder.



After precise planning, all individual components are supplied to the bodybuilder and prepared for assembly. Our specialist TITGEMEYER consultants are available to offer their experience and many useful tips.



Especially for the first bodywork kits, TITGEMEYER experts will assist and advise the bodybuilder during assembly.



A body made-to-measure:
The individually designed body kit will be built up piece by piece and the final product will conform precisely to the bodybuilder's specifications.



GETO® City body kit

Overview

GETO® City body kit – Overview

		GETO City Clamped aluminium	GETO City Sandwich 25	GETO City Ultra 14	GETO City Ultra 17
2 side walls	Material	Aluminium	Sandwich panel	Sandwich panel	Sandwich panel
	Wall thickness (mm)	28	25	14	17
	Side rave flange height (mm)	50	50	50	50
	Aluminium kick strip (mm)	approx. 125	approx. 125	approx. 125	approx. 125
	Fitted on the inside				
	Powder-coated surface	compl. MB 9147 (arctic white)	compl. MB 9147 (arctic white)	compl. MB 9147 (arctic white)	compl. MB 9147 (arctic white)
	Surface	Clamped	smooth	smooth	smooth
	Post spacing (mm)	600	–	–	–
	Material used for posts	Steel	–	–	–
1 bulkhead	Material	Aluminium	Sandwich panel	Sandwich panel	Sandwich panel
	Wall thickness (mm)	28	25	17	17
	Side rave height (mm)	50	50	50	50
	Steel kick strip (mm)	approx. 125	approx. 125	approx. 125	approx. 125
	Fitted on the inside				
	Powder-coated surface	compl. MB 9147 (arctic white)	compl. MB 9147 (arctic white)	compl. MB 9147 (arctic white)	compl. MB 9147 (arctic white)
	Surface	Clamped	smooth	smooth	smooth
	Post spacing (mm)	600	–	–	–
	Material used for posts	Steel	–	–	–
1 roof	Design	One-piece, smooth	One-piece, smooth	One-piece, smooth	One-piece, smooth
	Material	GRP, translucent / aluminium	Sandwich panel	GRP, translucent / aluminium	GRP, translucent / aluminium
	Material thickness (mm)	1.8	30	1.8	1.8
	Roof strut spacing (mm)	600	–	600	600
	Cantrail	Round design	Round design	Round design	Round design
	Powder-coated profile surface	compl. MB 9147 (arctic white)	compl. MB 9147 (arctic white)	compl. MB 9147 (arctic white)	compl. MB 9147 (arctic white)
1 rear door frame with rear doors	Design	Aluminium with steel rear bottom member	Aluminium with steel rear bottom member	Aluminium with steel rear bottom member	Aluminium with steel rear bottom member
	2 rear doors	Fitted inside rear frame	Fitted inside rear frame	Fitted inside rear frame	Fitted inside rear frame
	Material	Aluminium, smooth edged	Aluminium, smooth edged	Aluminium, smooth edged	Aluminium, smooth edged
	Lock recessed into right- hand leaf	Recessed, lockable	Recessed, lockable	Recessed, lockable	Recessed, lockable
	Internal cladding	Steel sheeting, galvanised/primed	Steel sheeting, galvanised/primed	Steel sheeting, galvanised/primed	Steel sheeting, galvanised/primed

GETO® City body kit – Fittings

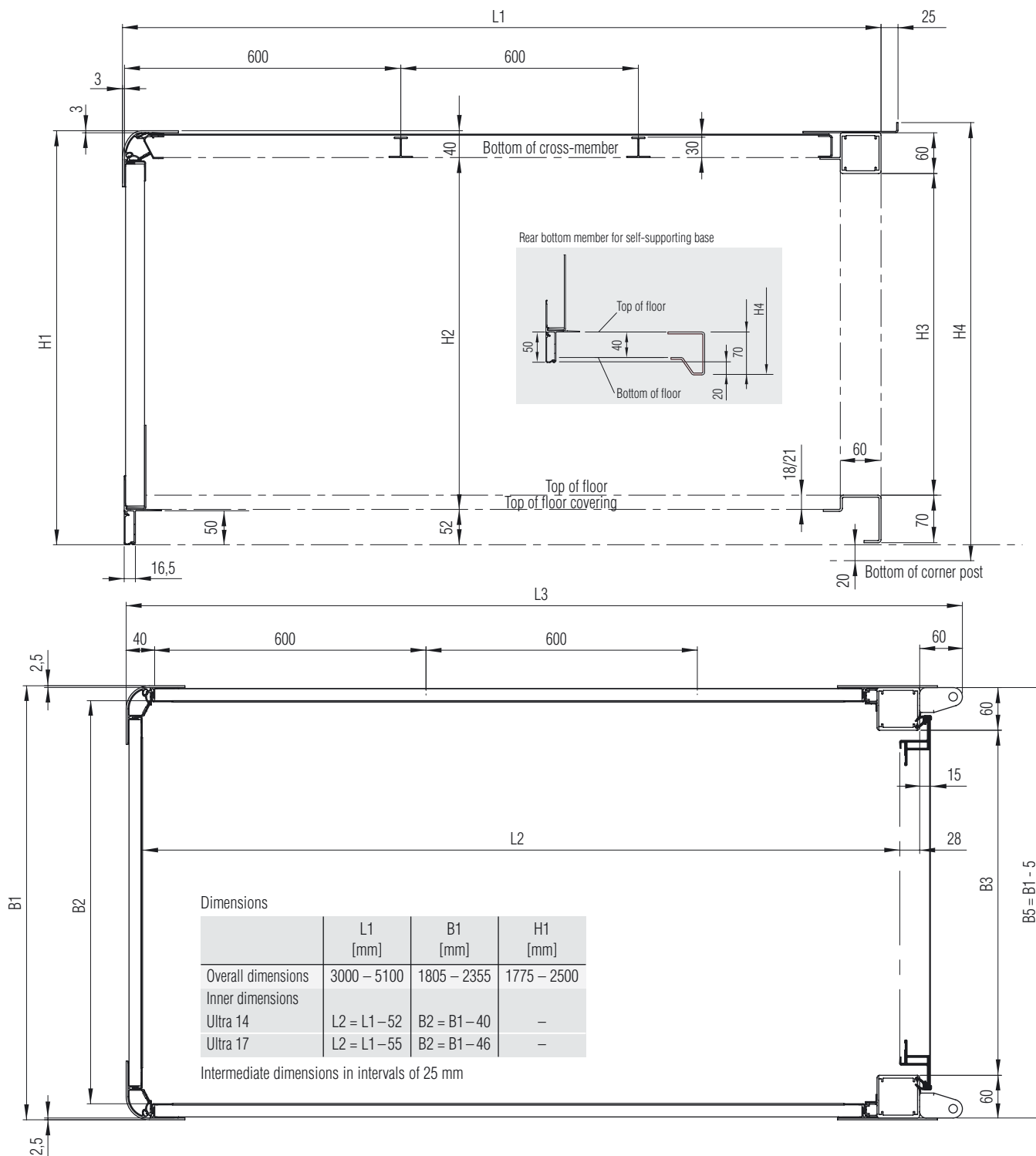
	Cargo control pairs	Combined cargo control track ¹	Internal cladding, wood	Internal cladding, HDF	Steel internal cladding	Aluminium internal cladding	Aluminium internal cladding, primed	Styrofoam	1-leaf side door, Tila	1-leaf side door, standard hinges	Aluminium side flap	Lock, recessed	Sliding bar lock	Sliding latch	Spring latch	Position light, red, 12V	Position light, white, 12V	Third brake light (LED)	Ceiling light (LED)	Floor thickness 18 mm	Floor thickness 21 mm	Height of rear bottom member 70 mm	
Roof																							
Aluminium	-	-	-	-	-	-	-	-	-	-	-	-	-	-	-	-	-	•	-	-	-	-	-
GFK	-	-	-	-	-	-	-	-	-	-	-	-	-	-	-	-	-	•	-	-	-	-	-
Sandwich panel 30 mm	-	-	-	-	-	-	-	-	-	-	-	-	-	-	-	-	-	•	-	-	-	-	-
Bulkhead																							
Clamped aluminium	•	•	•	-	-	-	-	•	-	-	-	-	-	-	-	•	-	-	-	-	-	-	-
Ultra 14	-	•	-	-	-	-	-	-	•	•	•	-	-	-	-	-	-	-	-	-	-	-	-
Ultra 17	-	•	-	-	-	-	-	-	•	•	•	-	-	-	-	-	-	-	-	-	-	-	-
Sandwich panel 25 mm	-	•	-	-	-	-	-	-	•	•	•	-	-	-	-	-	-	-	-	-	-	-	-
Side wall left / right																							
Clamped aluminium	•	•	•	-	-	-	-	•	•	•	•	-	-	-	-	-	-	-	-	-	-	-	-
Ultra 14	-	•	-	-	-	-	-	-	•	•	•	-	-	-	-	-	-	-	-	-	-	-	-
Ultra 17	-	•	-	-	-	-	-	-	•	•	•	-	-	-	-	-	-	-	-	-	-	-	-
Sandwich panel 25 mm	-	•	-	-	-	-	-	-	•	•	•	-	-	-	-	-	-	-	-	-	-	-	-
Aluminium rear frames																							
Rear door leaf, left	-	-	•	•	•	•	•	•	-	-	•	-	•	•	-	-	-	-	-	-	-	-	-
Rear door leaf, right	-	-	•	•	•	•	•	•	-	-	•	•	-	-	-	-	-	-	-	-	-	-	-
Aluminium rear flap over tail-lift	-	-	•	•	•	•	•	•	-	-	-	-	-	-	-	-	-	-	-	-	-	-	-
Single-leaf TILA aluminium side door	-	-	-	•	•	•	•	•	-	-	•	•	-	-	-	-	-	-	-	-	-	-	-
Single-leaf aluminium side door stand. hinge	-	-	-	•	•	•	•	•	-	-	•	•	-	-	-	-	-	-	-	-	-	-	-
Single-leaf side flap	-	-	-	•	•	•	•	•	-	-	•	•	-	-	-	-	-	-	-	-	-	-	-

¹ Combined cargo control track Part No. 612 066 surface-mounted

- available
- not available

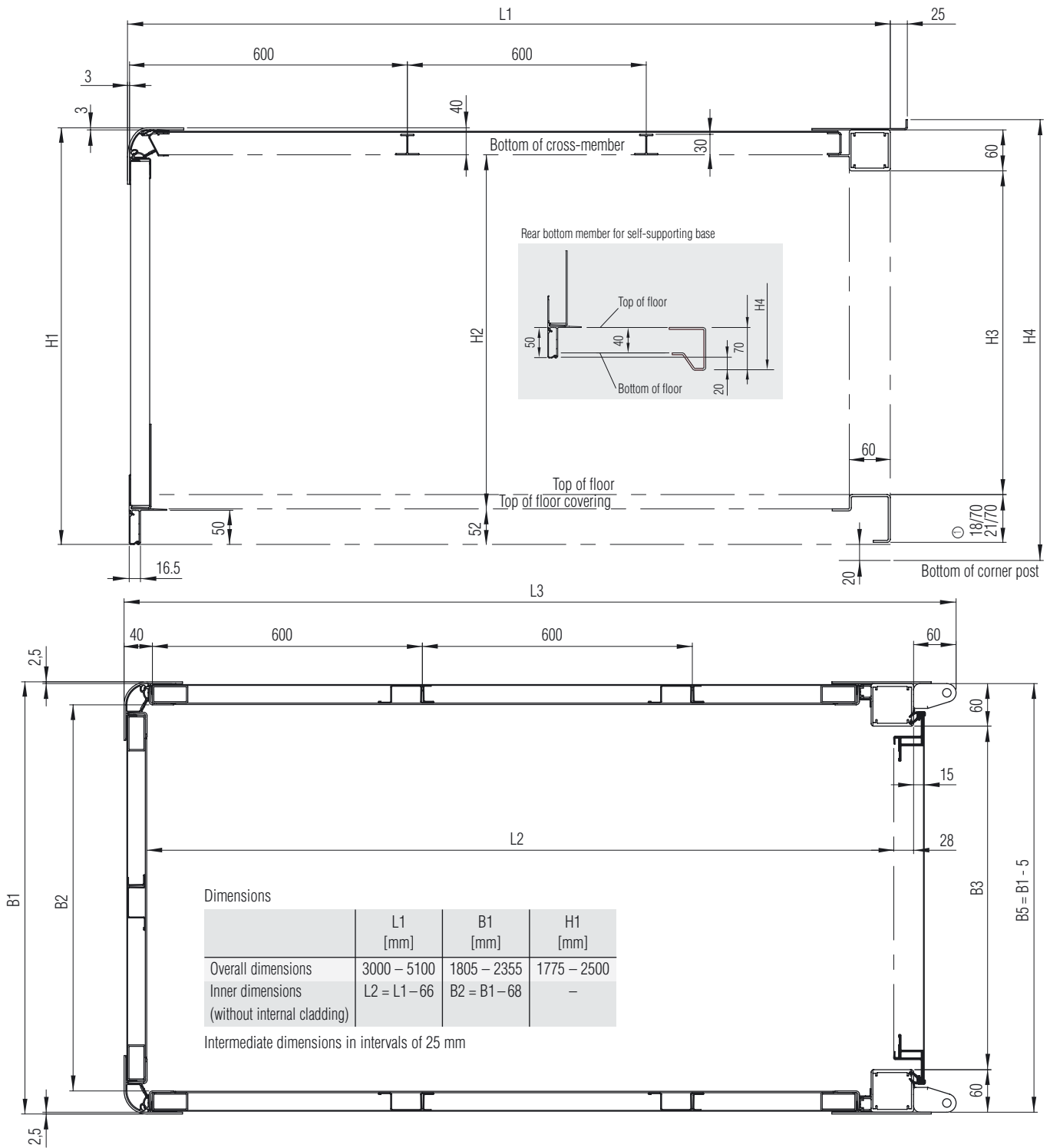
Self-supporting base for all models in one design (dimensions automatically configured).
Two longitudinal members per base, in lengths of 3500 mm, 4300 mm and 500 mm (matching length automatically configured).
Body mounting brackets with washer and bolt (quantity automatically configured).

GETO® City body kit
Dimensions for Ultra 14 and Ultra 17



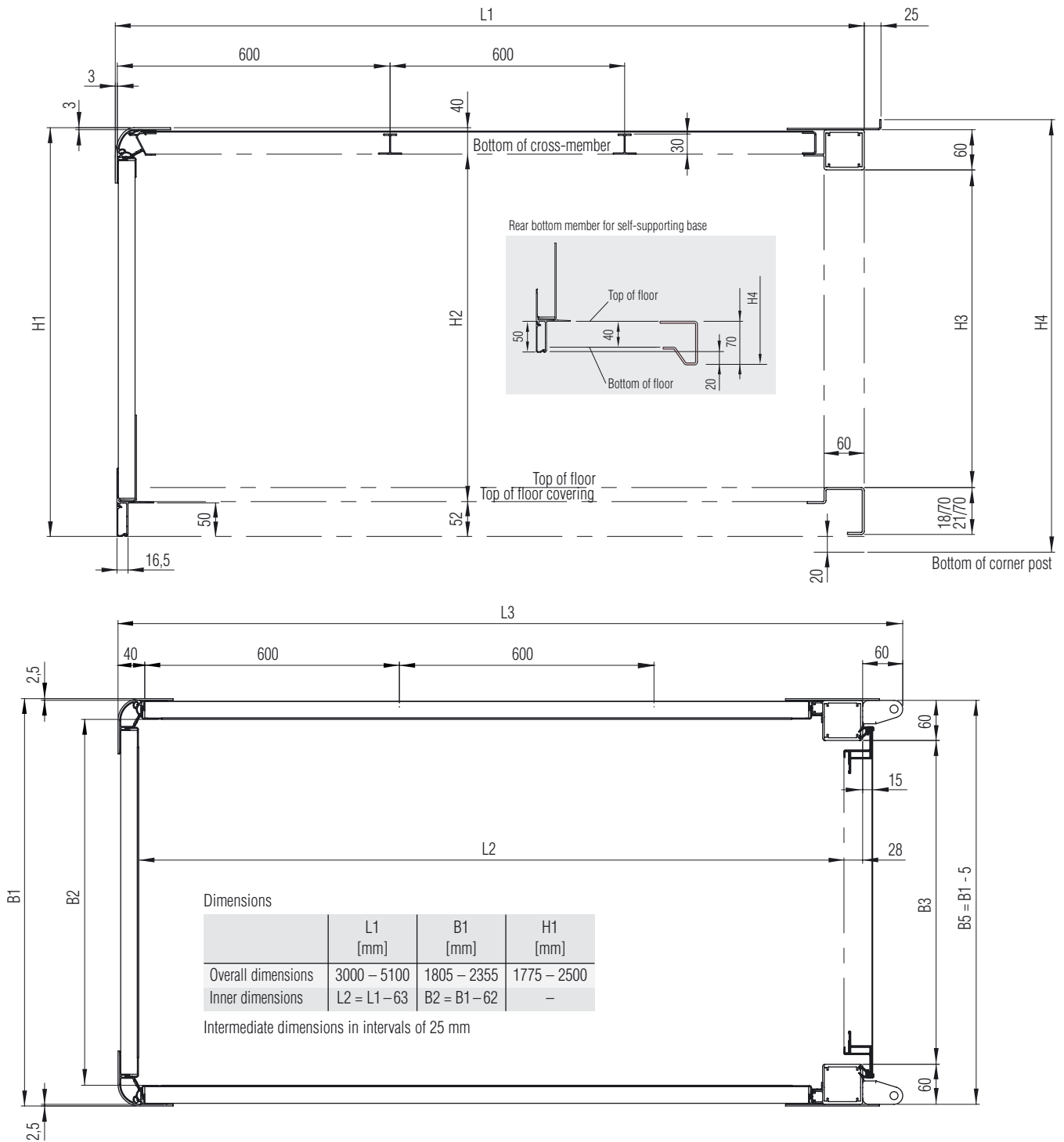
- L1 = External length over roof corner caps to rear edge of top member on rear frame
- L2 = Internal length measurement between bulkhead kick strip and inside of rear door (flap)
- L3 = External length over everything from the roof corner caps on the bulkhead to the overhanging hinge on the rear door
- B1 = Total width measured over roof corner caps
- B2 = Internal width between side wall kick strips
- B3 = Aperture clearance of rear frame
- B5 = External width of rear frame
- H1 = External height over roof corner caps to bottom of side rave profile
- H2 = Internal height between roof bow to top of floor covering; floor thickness 18 and 21 mm
- H3 = Aperture clearance of rear frame
- H4 = Height over all components; top of cover profile to bottom of side rave profile / bottom member on rear frame
- ① = Height of top member: 60 mm for doors with recessed locks and for tail-lift flap

GETO® City body kit Dimensions for clamped Aluminium



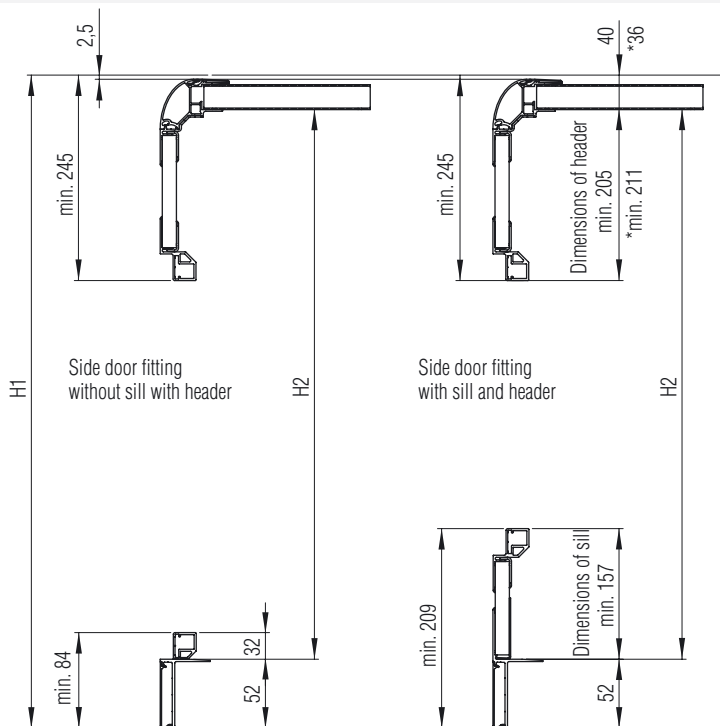
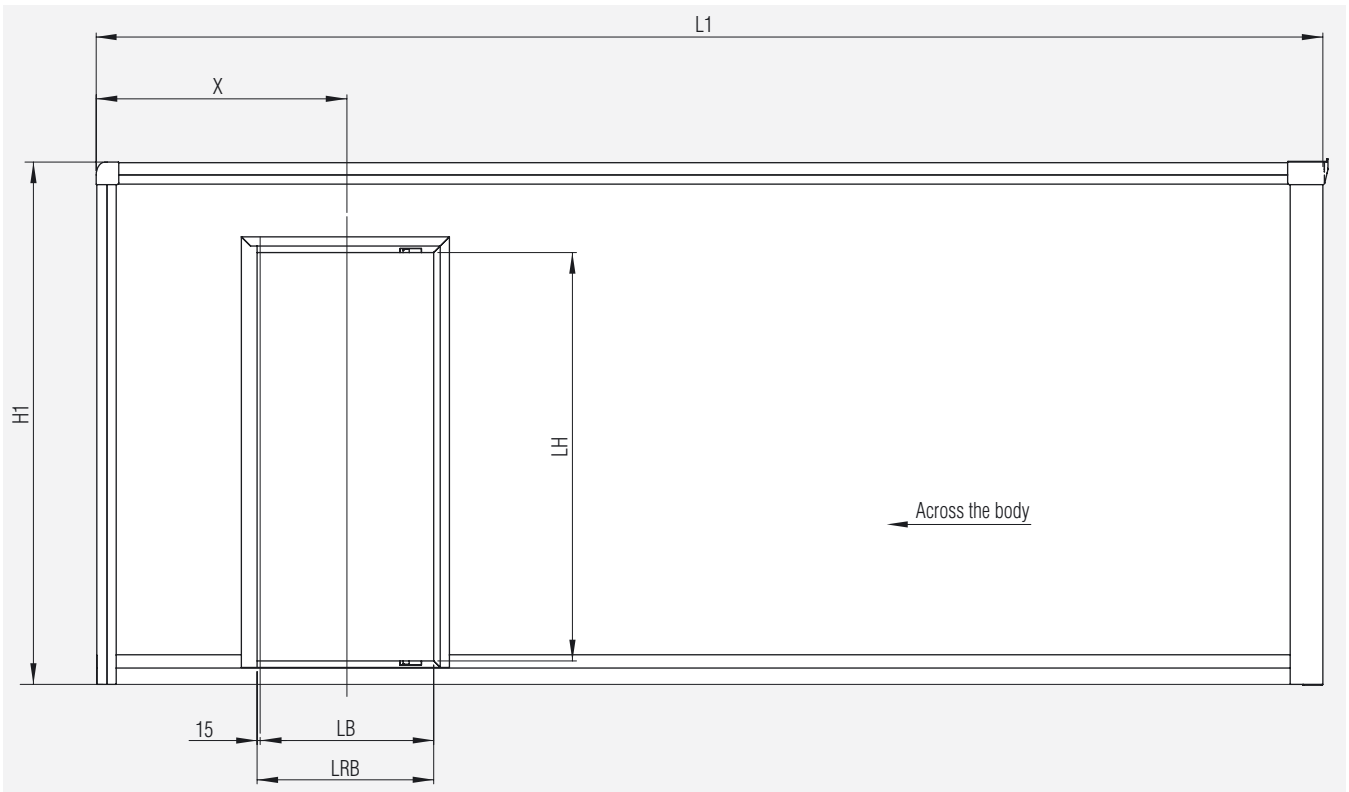
- L1 = External length over roof corner caps to rear edge of top member on rear frame
- L2 = Internal length measurement between bulkhead kick strip and inside of rear door (flap)
- L3 = External length over everything from the roof corner caps on the bulkhead to the overhanging hinge on the rear door
- B1 = Total width measured over roof corner caps
- B2 = Internal width between side wall kick strips
- B3 = Aperture clearance of rear frame
- B5 = External width of rear frame
- H1 = External height over roof corner caps to bottom of side rive profile
- H2 = Internal height between roof bow to top of floor covering; floor thickness 18 and 21 mm
- H3 = Aperture clearance of rear frame
- H4 = Height over all components; top of cover profile to bottom of side rive profile / bottom member on rear frame
- ① = Height of top member: 60 mm for doors with recessed locks and for tail-lift flap

GETO® City body kit
Dimensions for sandwich panel 25



- L1 = External length over roof corner caps to rear edge of top member on rear frame
- L2 = Internal length measurement between bulkhead kick strip and inside of rear door (flap)
- L3 = External length over everything from the roof corner caps on the bulkhead to the overhanging hinge on the rear door
- B1 = Total width measured over roof corner caps
- B2 = Internal width between side wall kick strips
- B3 = Aperture clearance of rear frame
- B5 = External width of rear frame
- H1 = External height over roof corner caps to bottom of side rive profile
- H2 = Internal height between roof bow to top of floor covering; floor thickness 18 and 21 mm
- H3 = Aperture clearance of rear frame
- H4 = Height over all components; top of cover profile to bottom of side rive profile / bottom member on rear frame
- ① = Height of top member: 60 mm for doors with recessed locks and for tail-lift flap

GETO® City body kit Dimensions for side door

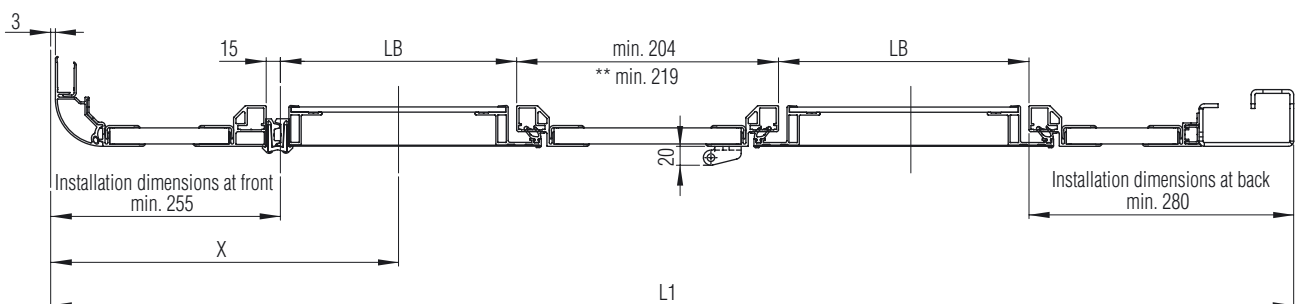


L1 = External length over roof corner caps to rear edge of top member on rear frame
 LH = Clear height
 LB = Clear width
 LRB = Clear width of frame

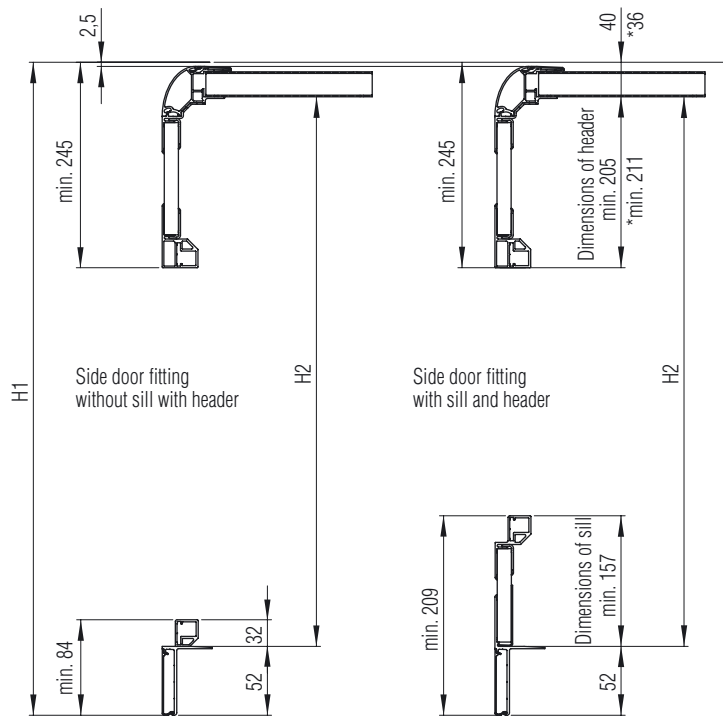
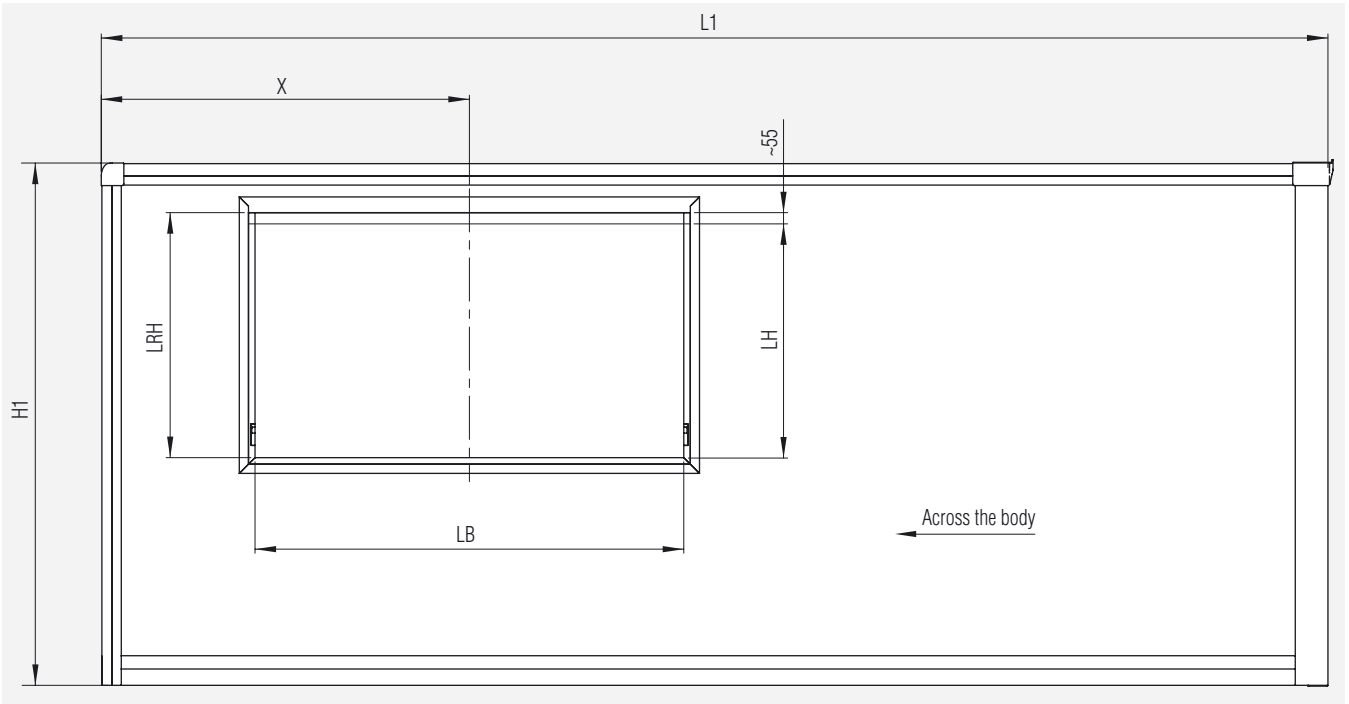
H1 = External height over roof corner caps to bottom of side rave profile
 H2 = Internal height between roof bow to top of floor covering; floor thickness 18 and 21 mm

X = Dimensions over outer roof corner caps to centre of door installation

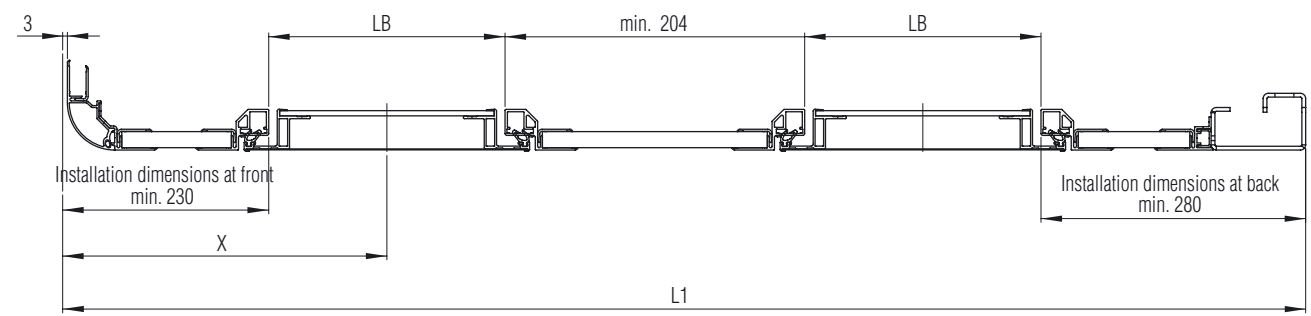
* = Dimensions for sandwich roof 30
 ** = Dimensions for door with standard hinge



GETO® City body kit
Dimensions for side flap



- L1 = External length over roof corner caps to rear edge of top member on rear frame
- LH = Clear height
- LB = Clear width
- LRB = Clear width of frame
- H1 = External height over roof corner caps to bottom of side rave profile
- H2 = Internal height between roof bow to top of floor covering; floor thickness 18 and 21 mm
- X = Dimensions over outer roof corner caps to centre of door installation
- * = Dimensions for sandwich roof 30
- ** = Dimensions for door with standard hinge





Gebr. TITGEMEYER GmbH & Co. KG

Hannoversche Straße 97

(Navigation: Hettlicher Masch 2)

49084 Osnabrück, Germany

P.O. Box 43 20

49033 Osnabrück, Germany

Phone: +49 (0)5 41/58 22-0

Fax: +49 (0)5 41/58 22-494

email: truckandtrailer@titgemeyer.com

www.titgemeyer.com