



LIFTING INNOVATION



PORTA-GANTRY™



PORTA-GANTRY *RAPIDE*



PORTA-DAVIT™



T-DAVIT™



WEBSITE

Product Brochure

www.reidlifting.com



LIGHTWEIGHT | PORTABLE | SAFE



Official Bloodhound SSC Product Sponsor



Raising industry lifting standards for 20 years

REID Lifting is the market leading innovator of lightweight, portable and safe lifting equipment.

All products are designed to offer real cost value while ensuring a level above the competition in terms of ease of use, quality of specification, versatility and delivery.

Manufactured in the UK, REID's superior products attract customers and resellers throughout Europe, North America, Australia, the Middle East and beyond. REID Lifting are continuously improving their products and service to ensure they stay at the forefront of the market.

With above-WLL testing, Lloyd's Register accreditation and exceptional knowledge of both aluminium engineering and lifting legislation, you can rest assured that a REID product will perform safely and easily.



ICONS EXPLAINED

Working Load Limit



WLL

Each system will have a working load limit (WLL) rating clearly stated along with its serial number for traceability. The WLL rating should NOT be exceeded under any circumstances.

Assembly/Operation



People Required

An indicator of the people typically required to safely assemble and operate the system in normal situations within manual handling guidelines. Every lift should be supported by the relevant risk assessment and method statement prior to the activity.

Transportation



Weight/Method

The typical total weight of each system for transportation. Weights may vary marginally. The format explains whether the system is 'bagged' or 'flat packed' for easy and safe storage, handling and transportation.

Personnel Lifting



EN795

Fully certified temporary anchor point meeting strict requirements of EN795 for protection against falls from a height and personnel lifting (as part of an EN363 compliant system).

Product Brochure Index:

..:PORTA-GANTRY®

A versatile range of lightweight aluminium gantries, designed to lift up to 5,000kg even in confined spaces.



4

..:PORTA-GANTRY® RAPIDE

A unique ultra-light & rapidly deployable gantry that provides a versatile lifting solution for both goods and personnel.



8

..:PORTA-DAVIT™

Designed with safety and strength in mind, our PORTA-DAVITs are easy to transport and assemble, yet offer unbeatable strength and durability.



10

..:PORTA-DAVIT™ QUANTUM

With a WLL 600kg and weighing just 18.5kg complete with an integrated carry handle, the PORTA-DAVIT QUANTUM is easily transported and suitable for a range of applications.



12

..:T-DAVIT®

Lightweight and portable, REID Lifting's innovative bespoke T-DAVIT range stands head and shoulders above the rest. Offering up to WLL 500kg and 360° rotation under finger tip.



14

..:SOCKETS & EXTENSIONS

A complete range of supporting sockets and socket extensions up to 1100mm are available to make the most of your davit lifting solution.



16

..:PORTA-BASE®

Our flexible, portable socket base for the PORTA-DAVIT 500, has both goods and personnel lifting capabilities.



17

..:PORTA-QUAD®

The ultra-light, quick to assemble mobile, yet stable lifting structure is perfectly designed for lifting heavy, submersible pumps with a higher safety factor than tripod systems.



17

SPECIALIST SERVICES

As industry lifting experts, REID Lifting offer a range of specialist services such as consultancy, customised design and on site training sessions.

18

QUALITY & SAFETY

REID Lifting operates to the highest standards of quality and safety in order to deliver the best lifting systems.

19



Unique portable gantry system that can safely lift up to 5000kg, with manual assembly on just 4 bolts.

500 - 5000KG WLL

1-4 People

92 - 294KG flat pack

EN795

(S) = Small (M) = Medium (I) = Intermediate (T) = Tall (see table)

Innovative, lightweight, portable, safe and very strong, the PORTA-GANTRY lifting system is the number one choice for organisations seeking safe, multiple location lifting solutions and a healthy return on investment. Its unique capabilities have proven to satisfy Finance, Operations, Health & Safety as well as users.



Assembly Video

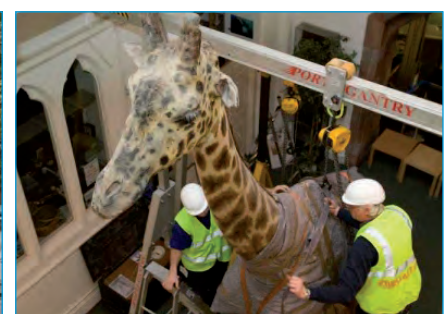


ATEX certified
(Contact REID for details)



PORTA-GANTRY 500 - 5000 Information:

- **GOODS WLL** From 500kg up to 5000kg *(depending on model)*
- **PERSONNEL WLL** Maximum combined personnel lifting capacity up to 2000kg *(depending on model)*
- **3-5 PERSON FALL ARREST** EN795:1997 certified - as part of an EN363 compliant system *(500 & 1000 - 3 persons, 2000, 3000 & 5000 - 5 persons)*
- **ATEX** All models suitable for use in ATEX Zone 2 explosive atmospheres
- **LIGHTWEIGHT & PORTABLE** With easy on-site assembly within manual handling guidelines:
 - 4 portable parts assembled on just 4 bolts
 - Simple 'scissoring' assembly in just 2-3 minutes
- **ERGONOMIC**
 - 360° swivel-locking castors as standard
 - Simple, manual height & span adjustment
 - Ultra-safe captive trolley
 - Ergonomic design of profiles and handles
- **STABLE** Bolted structure, lateral beam and leg bracing features
- **CONFIGURATIONS** Variety of standard configurations available, plus customisation for specific requirements and interchangeable components (subject to WLL rating)



An industry 1st - The *PORTA-GANTRY* 5000 is highly portable, safe and manually operated.

(I) = Intermediate (T) = Tall (see table)



The WLL 5000kg *PORTA-GANTRY* is a first in the industry. Following the design principles of all of the range, the *PORTA-GANTRY* 5000kg is highly portable, safe and manually operated.

PORTA-GANTRY 5000 Information:

- **GOODS WLL** Up to 5000kg rating - available in T & I standard frame sizes plus customisation
- **PERSONNEL WLL** Maximum combined personnel lifting capacity of up to 2000kg
- **5 PERSON FALL ARREST** EN795:1997 certified - as part of an EN363 compliant system
- **LIGHTWEIGHT & PORTABLE**
 - 'Wheel barrow' handling in field with just two people required
 - Mechanical assembly aid reducing manual handling (utilises standard chain block)
 - Manual handling compliance: 2 person assembly with mechanical aid, 4 person assembly without tools
- **ERGONOMIC**
 - Stabiliser leg deployment, vertical 'in depot' handling by just one person
 - Geared hand-wheel or optional ratchet operation of beam height adjustment

Notified Body Approval SGS UK (0120); Patented design.



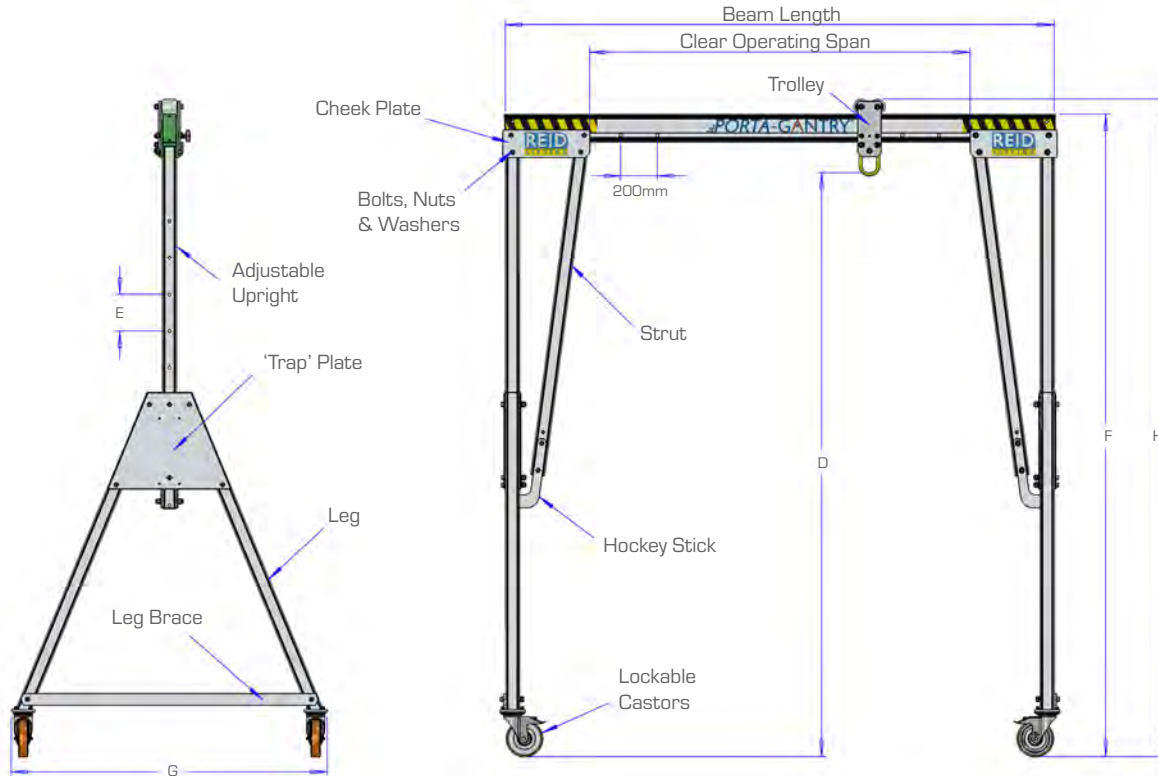
500 - 5000KG WLL

1-4 People

92 - 294KG flat pack

EN795

No compromise on strength or safety. Custom configurations are available across the range.



Standard beam lengths

- 2500mm
- 3000mm
- 3920mm
- 4570mm
- 5500mm
- 6000mm
- 8400mm (D section Max)
- 9000mm

N.B: Clear Operating Span = Beam Length - 920mm

Each PORTA-GANTRY system comprises:

- 2 x A-Frames (or custom alternatives)
- Trolley - fully encapsulated for safety
- Beam lengths up to 9000mm (WLL dependent)
- Options and accessories to optimise your solution

Beam height adjustment

The height of each gantry beam is easily adjusted by the release of 2 bolts on each upright and can be easily and safely raised into position by increments of 200 or 150mm. To assist with this activity a geared wheel or ratchet system is provided for the larger gantries; manual on smaller frames.



PORTA-GANTRY detailed dimensions (mm)

WLL (kg)	Frame size	D _{max}	E	D _{min}	F	H _{max}	H _{min}	G	A-Frame Weight (kg)	Trolley roller size	Castor Diam
		Max height to lifting eye	Height increment	Min height to lifting eye	Max height to top of beam	Max height to top of roller	Min height to top of roller	Width			
500 / 1000	S	2355	5 x 150	1605	2675	2757	2007	1212	33	82	150
	M	2851	5 x 150	2101	3171	3253	2503	1429	40	82	150
	I	3188	5 x 200	2188	3499	3581	2581	1726	46	82	200
	T	4079	6 x 200	2879	4399	4481	3281	2011	51	82	200
	TC4	4527	6 x 200	3327	4847	4930	3730	2234	80	82	200
	TC3	5027	6 x 200	3827	5347	5430	4230	2557	82	82	200
	TC2	5527	8 x 200	3927	5848	5930	4330	2733	87	82	200
TC1	5829	9 x 200	4029	6149	6231	4431	2733	95	82	200	
2000	S	2355	5 x 150	1605	2675	2757	2007	1212	38	82	150
	M	2851	5 x 150	2101	3171	3253	2503	1429	40	82	150
	I	3188	5 x 200	2188	3499	3581	2581	1726	46	82	200
	T	4079	6 x 200	2879	4399	4481	3281	2011	51	82	200
	TC4	4527	6 x 200	3327	4847	4930	3730	2234	80	82	200
	TC3	5027	6 x 200	3827	5347	5430	4230	2557	82	82	200
	TC2	5527	8 x 200	3927	5848	5930	4330	2733	87	82	200
TC1	5829	9 x 200	4029	6149	6231	4431	2733	95	82	200	
3000	S	2410	5 x 150	1660	2730	2812	2062	1212	55	82	200
	M	2906	5 x 150	2156	3226	3308	2558	1429	60	82	200
	I	3188	5 x 200	2188	3499	3581	2581	1726	70	82	200
	T	4079	6 x 200	2879	4399	4481	3281	2011	82	82	200
	TC4	4527	6 x 200	3327	4847	4930	3730	2234	80	82	200
	TC3	5027	6 x 200	3827	5347	5430	4230	2557	82	82	200
	TC2	5527	8 x 200	3927	5848	5930	4330	2733	87	82	200
5000	I	3181	5 x 200	2181	3592	3717	2717	1736	97*	125	200
	T	4049	6 x 200	2849	4487	4612	3412	2021	106*	125	200
	TC4	4500	6 x 200	3300	4938	5062	3862	2234	85	125	200
	TC3	5000	6 x 200	3800	5438	5562	4362	2557	90	125	200
S & M versions also available as custom systems											
WLL 5000kg dimensions systems are shown using the deeper 'D' section beam											

Beam lengths available up to 9000mm subject to WLL. For further information please contact REID or one of our representatives.

Dimensions use standard **Master Link Trolley**, other options available to increase resulting height of lift (HoL) and to assist with load movement.

* Weight includes stabiliser legs

PORTA-GANTRY® RAPIDE



500kg
WLL

1
person

33kg
compact
stowage

EN795

A unique, ultra-light & rapidly deployable gantry that provides a versatile lifting solution for goods and personnel.

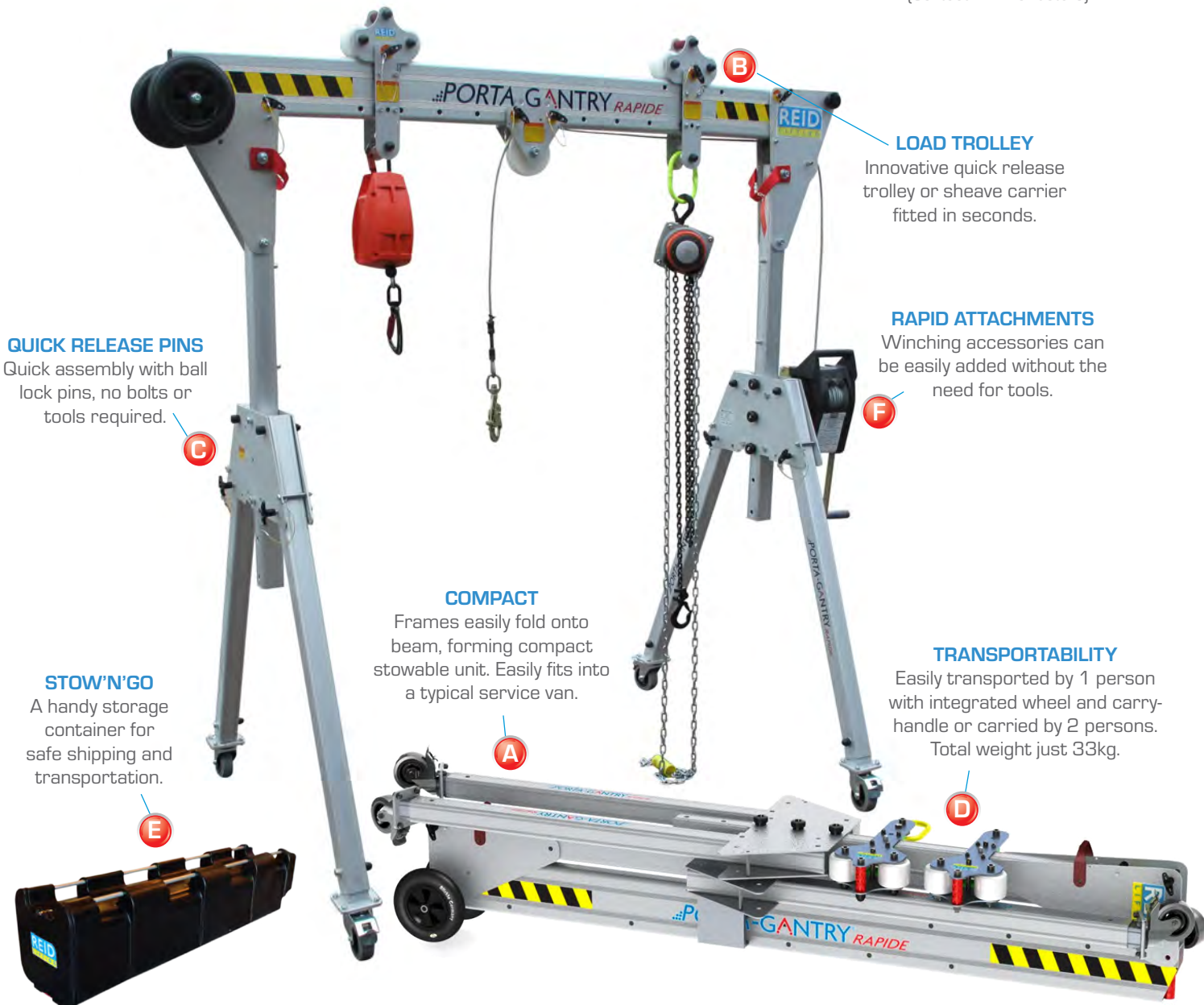
The *PORTA-GANTRY RAPIDE* adds exciting new dimensions to the *PORTA-GANTRY* family. A patented gantry that can be assembled in under 60 seconds for both goods and personnel lifting (man-ride) applications.



Assembly
Video



ATEX certified
(Contact REID for details)



QUICK RELEASE PINS

Quick assembly with ball lock pins, no bolts or tools required.

C

LOAD TROLLEY

Innovative quick release trolley or sheave carrier fitted in seconds.

B

RAPID ATTACHMENTS

Winching accessories can be easily added without the need for tools.

F

COMPACT

Frames easily fold onto beam, forming compact stowable unit. Easily fits into a typical service van.

A

TRANSPORTABILITY

Easily transported by 1 person with integrated wheel and carry-handle or carried by 2 persons. Total weight just 33kg.

D

STOW'N'GO

A handy storage container for safe shipping and transportation.

E

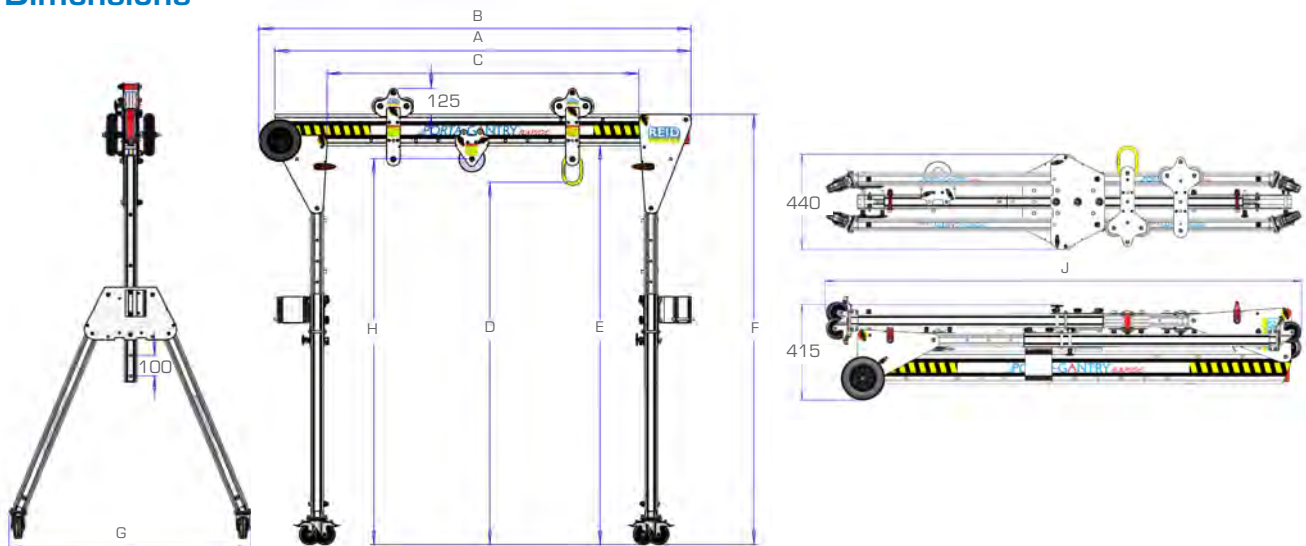


PORTA-GANTRY RAPIDE Information:

- **GOODS WLL** Up to 500kg
- **PERSONNEL WLL** Up to 250kg
- **3 PERSON FALL ARREST** EN795:1997 certified - as part of an EN363 compliant system
- **ATEX** Suitable for use in ATEX Zone 2 explosive atmospheres
- **LIGHTWEIGHT & PORTABLE** Within manual handling guidelines, weighing only 33kg
- **EASY USE**
 - Adaptable, multi-purpose trolleys - goods and personnel rated
 - Load bearing, lockable castors for easy positioning (*ACOP advises no gantry movement under load except where a competent person has undertaken a suitable Risk Assessment & Method Statement and has deemed appropriate*)
- **CONFIGURATIONS** Range of beam lengths up to 4m and configurations available

Dimensions

Notified Body Approval SGS UK (0120); Patented & registered designs.



	Dimensions (mm)													WLL			Unit Weight				
	A Beam Length	B	C _{Min}	C _{Max}	D _{Min}	D _{Max}	E _{Min}	E _{Max}	F _{Min}	F _{Max}	G	H _{Min}	H _{Max}	J	Goods Capacity (kg)	Fall Arrest Capacity* (Persons)	Personnel * (kg)	(kg)			
PGRS20	2000	2076	1100	1500										2190	500	3	250	33			
PGRS23	2300	2376	1200	1800	1738	1938	1914	2114	2064	2264	1158	1850	2050	2376	400	2	200	34			
PGRS40	4000	4076	2700	3500										4076	250	1	125	40			
PGRM20	2000	2076	1100	1500										2076	400	2	200	34			
PGRM23	2300	2376	1200	1800	1642	2042	1818	2218	1968	2368	1215	1755	2155	2376							34
PGRM40	4000	4076	2700	3500										4076	250	1	125	40			
PGR20	2000	2076	1100	1500										2631							38
PGR23	2300	2376	1200	1800	1916	2816	2092	2992	2242	3142	1586	2028	2928	2631							39
PGR40	4000	4076	2700	3500										4076				44			

*Ratings using European standards. Contact REID for other standards.



500kg
WLL

1
person

24kg
bagged

EN795

Lightweight 2 piece, bagged davit system with up to WLL 500kg, yet only 24kg fully assembled.

With a safe lifting capacity of up to 500kg, made of lightweight aluminium and weighing just 24kg (fully assembled), the *PORTA-DAVIT* system is literally a one person 'pick up and go' lifting solution. Manufactured using REID Lifting's innovative design, the *PORTA-DAVIT* bagged system can be easily transported by hand to any site that a single person can access.

The *PORTA-DAVIT* is available in several variations, including standard strop and winched versions, extended radius (e.g. WLL 350kg at 1500mm radius) and complete with a portable socket base (the *PORTA-BASE*), removing the need for a fixed socket installation.



For more information on the *PORTA-BASE* (for use with the *PORTA-DAVIT* 500), please go to page 17.



PORTA-DAVIT 500 Information:

- **GOODS WLL** Up to 500kg
- **PERSONNEL WLL** Up to 120kg
- **1 PERSON FALL ARREST** EN795:1997 certified - as part of an EN363 compliant system
- **ATEX** Suitable for use in ATEX Zone 2 explosive atmospheres
- **LIGHTWEIGHT & PORTABLE** Standard unit just 24kg fully assembled
 - Simple assembly within manual handling guidelines, 2 piece design with no tools needed
 - Easy to store and transport in heavy duty bag
- **RADIUS ADJUSTMENT** 800-1200mm as standard
- **EASE OF ROTATION** 360° rotation under full load with fingertip control
- **CORROSION RESISTANT** Clean, anodised finish
- **UNIVERSAL KINGPIN** Mates with all 65mm REID sockets (or sleeves for existing sockets) - includes REID's unique portable socket, the *PORTA-BASE*. Also suitable for use with socket extensions.



PORTA-DAVIT 500 man-rated options

The PORTA-DAVIT is available in three forms rated for different personnel applications:

- **FALL PROTECTION** Standard strop davit with a fall arrest unit fitted to a shackle.
- **LOWER & RAISE** Winched davit with a man rated winch to lower and raise personnel and separate fall arrest unit with or without integral retrieval winch.
- **LADDER OR CLIMBING** Winched davit with a fall arrest unit with integral retrieval winch where personnel moves on a ladder or climbing.

The PORTA-DAVIT system (using REID mounting sockets) is approved to EN795:1997, as part of an EN363 compliant system.

We recommend that the PORTA-DAVIT unit has a dedicated man-ride rating only and is set at the minimum possible operating radius; however, it is possible to have the davit dual rated at 120kg for man ride and 500kg goods lifting.

When used for man-ride applications the PORTA-DAVIT unit **must** be dedicated to the man-ride application **only** and there should be no goods load attached to the davit. Suitably rated chain blocks, winches and man-ride options and accessories are all available from REID Lifting.

Notified Body Approval Lloyd's Register (0038) Patent pending.

PORTA-DAVIT™ 1000

The first truly portable WLL 1000kg lightweight davit system.



1000kg
WLL



1
person



39kg
bagged

The PORTA-DAVIT 1000 further extends the PORTA-DAVIT family of jib cranes with up to WLL 1000kg lifting capability for goods, bringing additional safety margins for situations where safety is paramount, such as wastewater treatment applications.

PORTA-DAVIT 1000 Information:

- **GOODS WLL** Up to 1000kg at 900-1200mm radius
- **HEIGHT OF LIFT** 2000mm to shackles on standard unit
- **LIGHTWEIGHT & PORTABLE**
 - Unique profiles maximising strength vs. weight
 - Stored in a heavy duty bag for easy transportation - combined weight of only 39kg
 - Single person assembly - no tools required
- **EASE OF ROTATION** Bearing system allows easy rotation - rotation bar supplied as an option



Custom versions to meet specific requirements can be quoted upon request.

N.B: 95mm sockets are required for this product.

Patented design.

PORTA-DAVIT™ QUANTUM



600kg
WLL



1
person



From
18.5kg



EN795

Strong yet ultra-light system with integrated carry handle, capable of lifting up to 600kg.

This unique, ultra-light and rapidly deployable system is the latest innovation to come from REID Lifting. With a WLL 600kg and weighing from just 18.5kg with an integrated carry-handle, the *PORTA-DAVIT QUANTUM* is easily transported, and suitable for a range of applications.



ATEX certified
(Contact REID for details)



IMPROVED SAFETY
Shock absorbent strop for enhanced personnel protection.

QUICK & EASY ASSEMBLY
Telescopic jib with integral overload indicator.

ULTRA-LIGHTWEIGHT
Integrated carry handle.
Unit weighs from just 18.5 - 23.5kg.



NEW HEAD DESIGN

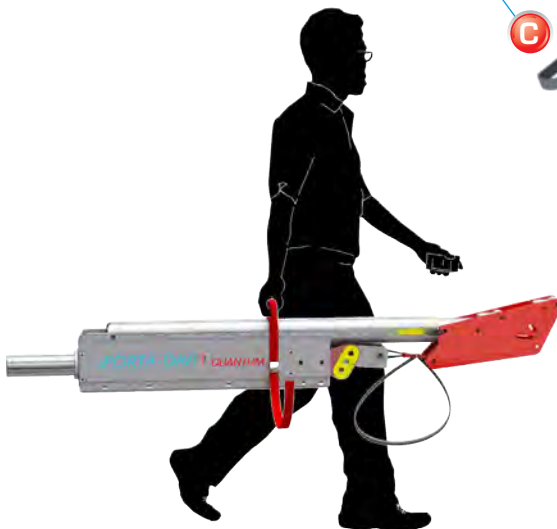
Innovative head design with three sheaves & dual winch position.

RAPID ATTACHMENTS
Column fins allowing simple winch attachment and 2 radius ranges.
(900-1200mm or 1200-1500mm)

EASE OF ROTATION
Innovative bearing design for ease of rotation under load.

Type S
(Strop)

Type W
(Winched)



PORTA-DAVIT QUANTUM Information:

GOODS WLL

- PORTA-DAVIT QUANTUM 1 - up to 600kg at 1200mm radius
- PORTA-DAVIT QUANTUM 2 - up to 500kg at 1500mm radius

PERSONNEL WLL

Up to 150kg at all configurations

1 PERSON FALL ARREST EN795:2012 certified - as part of an EN363 compliant system

ATEX Suitable for use in ATEX Zone 2 explosive atmospheres

LIGHTWEIGHT & PORTABLE Manual handling compliant - fully assembled weight from just 18.5kg

- Integrated carry handle
- Bagged for easy transportation and storage

RAPID ASSEMBLY No tools needed, assembles on just 1 pin (2 for winched)

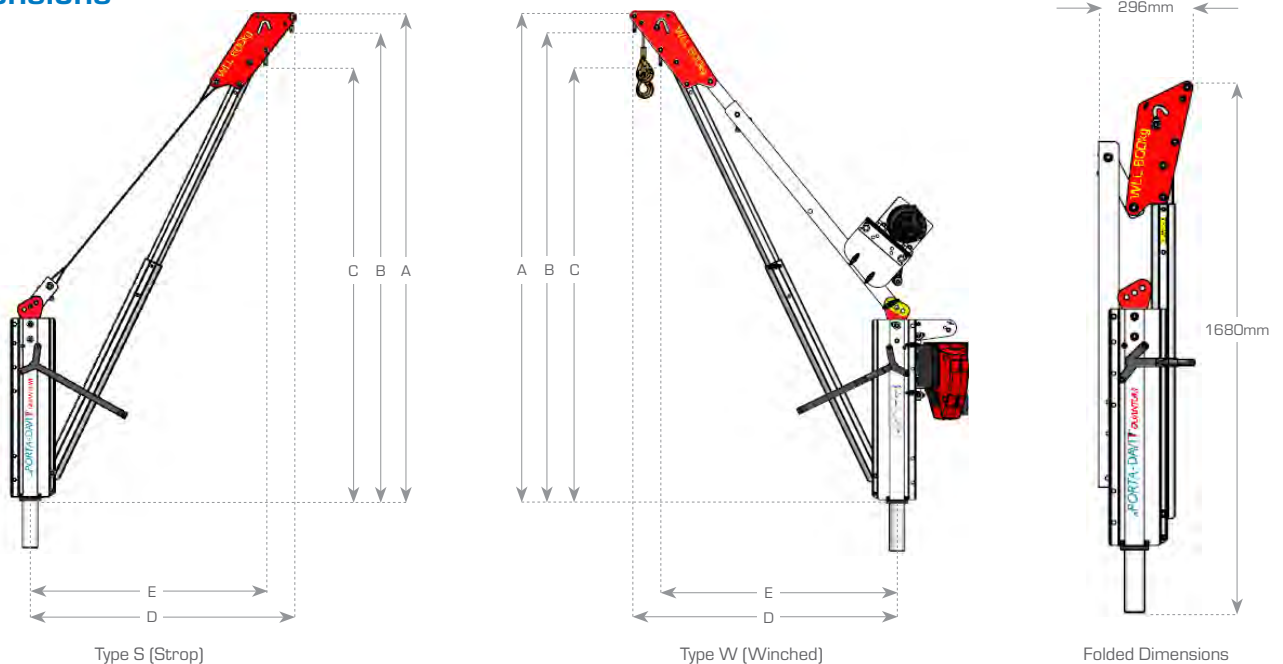
RADIUS ADJUSTMENT 900mm -1200mm or 1200mm -1500mm as standard

EASE OF ROTATION 360° rotation under full load with fingertip control

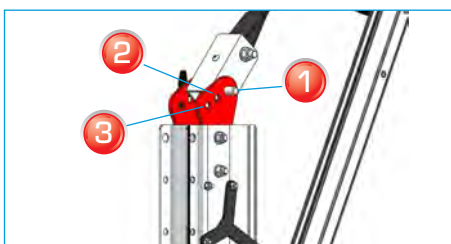
CORROSION RESISTANT Clean anodised finish to increase wear resistance

UNIVERSAL KINGPIN Mates with all 65mm REID sockets (or sleeves for existing sockets). Also suitable for use with socket extensions

Dimensions



Radius Adjustment Points



	WLL	Radius Adjustment Points	Dimensions (mm)				
			A	B	C	D	E
PDQ 1	600kg	1	2007	1935	1799	1200	1100
		2	2061	1989	1848	1100	1000
		3	2111	2039	1892	1000	900
PDQ 2	500kg	1	1837	1766	1647	1500	1400
		2	1899	1827	1703	1400	1300
		3	1957	1885	1755	1300	1200



500kg
WLL

1
person

Customised
& bagged

EN795

The bespoke T-DAVIT is lightweight, portable and manufactured with specific needs in mind.

An extensive range of davits offering up to WLL 500kg with 360° rotation under finger tip control for those difficult locations, giving a wide range of standard height and radius options and available customisation.

Particularly suited to situations with environment constraints (headroom, handrails etc.) with a wide range of configurations available. Designed to comply with manual handling regulations and to avoid assembling the davit at height.

N.B: TYPE W provides Winch & Shackle lifting points.
TYPE S provides Shackle lifting only.



Standard Type W
(Winch and Shackle) T-DAVIT



Standard Type S
(Shackle only) T-DAVIT

T-DAVIT Information:

- **GOODS WLL** Up to 500kg (see table on next page)
- **PERSONNEL WLL** Configurations available up to 150kg
- **1 PERSON FALL ARREST** EN795:2012 certified - as part of an EN363 compliant system
- **ATEX** Suitable for use in ATEX Zone 2 explosive atmospheres
- **LIGHTWEIGHT & PORTABLE**
 - Manual handling compliant
 - Reduced maintenance costs
 - Bagged for easy transportation and storage
- **RAPID ASSEMBLY** Assembly & operation by 1 person, no tools required - just 2 main components
- **RADIUS ADJUSTMENT** Operational radius up to 3000mm - subject to WLL reduction (1900mm maximum for EN795)
- **EASE OF ROTATION** 360° rotation under full load with fingertip control
- **CORROSION RESISTANT** Clean anodised finish to increase wear resistance
- **UNIVERSAL KINGPIN** Mates with all 65mm REID sockets (or sleeves for existing sockets). Also suitable for use with socket extensions
- **SPECIFICATIONS**
 - 2 lifting positions as standard (A&B)
 - Twin shackles for index lifting and/or attachments for winching

Patent pending.

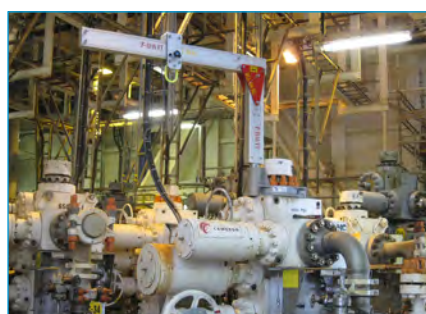
Options & Upgrades:



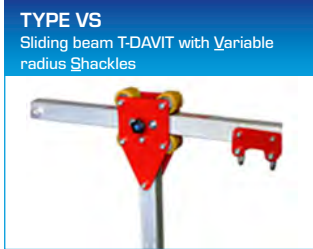
- Integrated wheel carrier for reduced manual handling



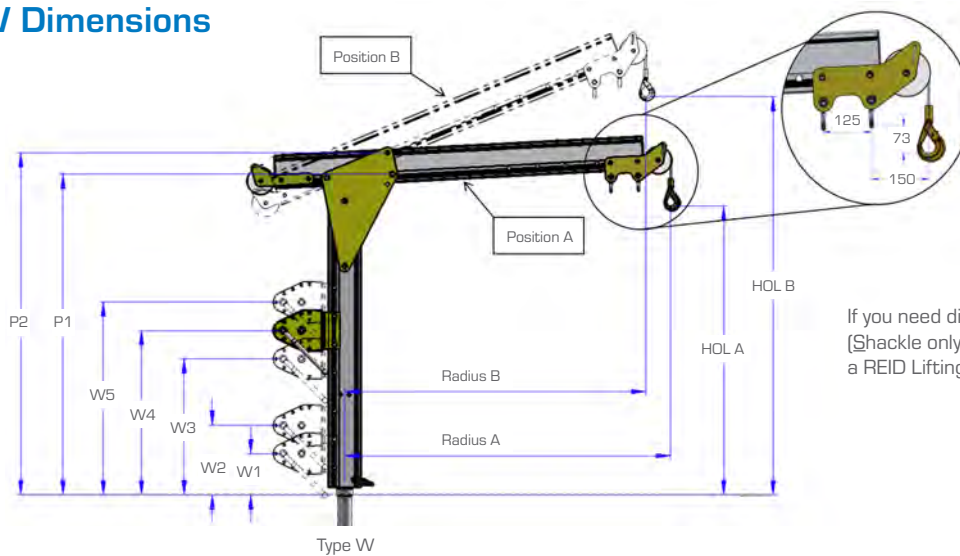
- Beam radius adjustment
- Fall arrest (EN795:2012) and personnel winching



Alternative Variations



Type W Dimensions



If you need dimensions for a Type S (Shackle only) T-DAVIT, please contact a REID Lifting representative.

Beam Option	1		2		3		4	
Position	A	B	A	B	A	B	A	B
Radius (mm)	1000	925	1200	1110	1600	1478	2000	1850
Load Rating 1 (kg)	500		400		300		250	
Load Rating 2 (kg)	500		500		375		300	

Column Option	Height of Lift (HOL) (mm)								Winch Position	P1	P2	
	A	B	A	B	A	B	A	B				
1	839	1151	839	1227	839	1380	839	1532	W1	190	982	1081
									W2	320		
2	1019	1331	1019	1407	1019	1560	1019	1712	W1	190	1162	1261
									W2	320		
									W3	625		
3	1329	1641	1329	1717	1329	1870	1329	2022	W1	190	1472	1571
									W2	320		
									W3	625		
									W4	755		
									W5	885		
4	1644	1956	1644	2032	1644	2185	1644	2337	W3	625	1787	1886
									W4	755		
									W5	885		
5	1954	2266	1954	2342	1954	2495	1954	2647	W5	885	2097	2196

Dimensions are to hook on Winched type above.

SOCKETS & EXTENSIONS

SOCKETS

REID Lifting manufactures a range of 65mm and 95mm standard sockets to suit the needs of clients' davit mounting foundations, designed and tested for *PORTA-DAVIT* and *T-DAVIT* product families with CE requirements for Declaration of Conformity & Incorporation. Customised sockets can be developed for specialist requirements.

- **Flush Mount:**
 - Complete with cover and re-bars, for casting into concrete, and protective cover.
 - Complete with cover for resin bonding into existing concrete.
- **Top Mount:** Suitable for bolting into existing concrete or steel structures – for simplicity or to provide additional davit height and reach.
- **Side Mount:** Suitable for mounting on the side of concrete or steel structures. A brace plate can be supplied for thin-walled concrete.
- **Bridge Mount:** Suitable for bolting into steel structures. Designed to fit open mesh grating or flush with structural steel work.
- **Customised:** Bespoke versions can be developed for non-typical installations.

All sockets are available in galvanised mild steel, passivated 316L stainless steel and yellow painted finish, with customisation available for specialised requirements.

SOCKET EXTENSIONS

Socket extensions are designed to provide additional height of lift, or to reach over obstacles, protective rails or walls for 65mm socket/kingpin products.

Made with lightweight aluminium alloy with handles for lifting and carrying, REID Lifting socket extensions are very easy to use. They simply insert into the existing socket and the standard *T-DAVIT* or *PORTA-DAVIT* is assembled as normal using the extension as its socket.

Socket extension options

Socket extensions are available in three standard sizes and can be customised to requirements:

- 500mm
- 800mm
- 1100mm
- Customised

Socket Extension Information:

- Can be used with 65mm REID davits combined with 65mm fixed sockets
- Increases the height to the lifting eye by 500mm, 800mm or 1100mm as standard
- Portable and lightweight with carrying/lifting handles
- Safe use features
- Maintenance free
- Manual handling compliant

DISCLAIMER: All REID sockets & extensions have been designed, developed and tested for safe use with REID's equipment and form a key part of the integrity of the total system. Should non-standard third party sockets be used, REID Lifting's Declaration of Conformity & Incorporation on the products is negated. i.e. The system becomes the responsibility of the client.



Flush Mount



Top Mount



Side Mount



Bridge Mount



Bespoke



Socket Extensions



Versatile, portable socket base for REID's PORTA-DAVIT 500 systems.

500kg
WLL

1
person

Various configs
& bagged

EN795

A truly innovative extension to the REID socket family to further support the flexible use of the PORTA-DAVIT 500 range. The most convenient socket without any need for a fixed socket installation.

PORTA-BASE Information:

- **GOODS WLL** Up to 500kg at a max. 1000mm radius
- **PERSONNEL WLL** Up to 120kg
- **PORTABLE** Packed in heavy duty protective bags for easy transportation and storage
- **SPECIFICATIONS**
 - Adjustable feet for uneven surfaces with spirit level fitted to each leg
 - For use with 65mm socket diameter
 - Suitable for clean environments



Available as a 90°, 180° and 360°, as well as the 270° counterbalanced version with up to 1000mm radius.

PORTA-BASE is not suitable for use with socket extensions, PORTA-DAVIT QUANTUMs or T-DAVITS. Notified Body Approval Lloyd's Register (0038)



Ultra lightweight and stable lifting structure perfectly designed for lifting heavy submersible pumps.

500kg
1000kg
WLL

1
person

bagged 28kg
bagged 36kg

The strong, yet extremely lightweight, mobile PORTA-QUAD, is available in WLL 500kg and 1000kg models. They are easily carried, assembled and can be used by just 1 person, saving time, manpower and related expense.

PORTA-QUAD Information:

- **GOODS WLL** Up to 500kg or 1000kg (depending on model)
- **LIGHTWEIGHT & PORTABLE**
 - Rapid on site assembly within manual handling guidelines
 - 2 heavy duty carry bags (maximum bag weight 18kg)
- **CORROSION RESISTANT** Clean anodised finish to increase wear resistance
- **SPECIFICATIONS**
 - 360° swivel locking castors for easy manoeuvring
 - Levelling feet option for easy use on most terrains
 - Highly stable structure vs Tripod
 - Can be supplied with directional lock or levelling feet



	WLL 500kg	WLL 1000kg
Base (mm)	1500 x 1500	2000 x 2000
Height to Lifting Eye (mm)	2150	3050
Weight Assembled (kg)	28	36

SPECIALIST SERVICES



Customisation

More than an 'off the shelf' manufacturer, REID Lifting's commitment to creating innovative, efficient and safe lifting systems extends to us welcoming enquiries for customised products to meet specific requirements. Our flexible and effective designs enable customised manufacturing to meet a wide range of requirements.

In addition to this customisation service, we are pleased to work with clients to develop totally bespoke solutions for lifting challenges; jointly develop products for niche applications; develop solution accessories to improve effectiveness or user safety and to work with organisations to 'design in' our products into larger scale projects from an early stage.

Safe assembly, handling & maintenance training

REID Lifting provides safe assembly, operation and maintenance manuals and offers hands on training for all systems, either at our Chepstow facility or at the client's premises. This training is designed to ensure that the client can effectively and safely assemble and operate the equipment in the relevant configuration.

Consultancy services

REID Lifting will be pleased to provide consultancy support for the development of:

- Customised product developments
- Full 'design in' applications
- Bespoke solution development
- Joint product development

Further information and support

Further information and support can be found on our website www.reidlifting.com

Or simply request:

- A presentation or demonstration
- Sales support visit
- Brochures
- Product data sheets
- Joint marketing campaign development – mailers, adverts, exhibition attendance, etc
- Consultancy discussions
- Lunch and learn events

ACCREDITATIONS

Quality and Safety Accreditations

Quality and safety are key themes throughout this document and the REID Lifting ethos.

It is with this in mind that we have undertaken external accreditations to ensure we stay focused on what is important to our clients and users, and ahead of market trends and developments. REID Lifting is continuously audited by Lloyds Register Quality Assurance (LRQA) (CE body no. 0088) for approval of its Integrated Management System combining quality systems management, environmental issues and the Health and Safety practices within the company.

Furthermore our products are subject to type examinations by witnessed testing and review of technical files which are carried out by SGS UK (CE body no. 0120).

(CE) - Conformité Européenne

REID Lifting's products have been designed, tested and approved (as appropriate) to CE requirements. This certifies that REID Lifting's products meet the demands of the European Directives regarding health and safety requirements.

The Queen's Award for Enterprise Innovation:

REID Lifting has been awarded this prestigious award for innovative design and development of lightweight, portable and safe lifting solutions, in both 2006 and 2013.

Testing

Testing and Technical File review are integral parts of our design and manufacturing process. External verification of products is undertaken where appropriate, using government approved Notified Bodies.



All products have been thoroughly type tested at UKAS accredited laboratories. Each system is supplied with a certificate of conformance and individual record of thorough examination or test.

Full product design & development Technical Files are available for inspection.

REID Lifting holds the following certifications

ISO 9001:2008 - Specifies requirements for a quality management system for any organisation that needs to demonstrate its ability to consistently provide products that meets customer and applicable regulatory requirements and aims to enhance customer satisfaction.

ARTICLE 11B - Specifies a quality system to comply with the strict requirements of producing a product to the PPE Directive 89/686/EEC.

ISO 14001:2004 - Specifies the requirements for implementing environmental management systems throughout all areas of the company.

OHSAS 18001:2007 - Occupational health and safety managements systems.

LEEA Membership - REID Lifting Ltd is a full member of the Lifting Equipment Engineers Association (LEEA membership 000897). REID Lifting conforms to the main aims of the association which is to achieve the highest standards of quality and integrity in the operations of members. Entry qualifications are demanding and strictly enforced through technical audits based on the Technical Requirements for Members.





UK

REID Lifting
Unit 1 Severnlink
Newhouse Farm Ind. Estate
Chepstow, Monmouthshire,
NP16 6UN, UK
Tel: +44 (0)1291 620 796
Fax: +44 (0)1291 626 490
enquiries@reidlifting.com
www.reidlifting.com

FRANCE

REID Lifting France
P.A. de Kerboulard
Rue Gutenberg
56250 Saint-Nolff
FRANCE
Tel: +33 (0)297 53 32 99
Fax: +33 (0)297 53 04 86
contact@reidlifting.fr
www.reidlifting.fr

DE & AUT & CH

REID Lifting D-A-CH
Finkernstrasse 26
8280 Kreuzlingen
SWITZERLAND
Tel: +41 (0)71 686 90 40
Fax: +41 (0)71 688 51 69
jesser@reidlifting.de
www.ecolistec.ch
www.reidlifting.de

SWEDEN

JJ Gruppen
Box 74, Rällarvägen 15
184 21 Åkersberga
SWEDEN
Tel: +46 (0)8540 69180
Fax: +46 (0)8540 60566
kamab@jjgruppen.se
www.jjgruppen.se

AUSTRALIA

Vector Lifting
43 Spencer Street
Jandakot, WA 6164
AUSTRALIA
Tel: +61 (0)8 9417 9128
Fax: +61 (0)8 9417 4105
info@vectorlifting.com.au
www.vectorlifting.com.au

USA & CANADA

Thern, Inc.
5712 Industrial Park Road
PO Box 347, Winona,
MN 55987, USA
Tel: +1 507 454 2996
Fax: +1 507 454 5282
info@thern.com
www.thern.com

TEL

+44 (0)1291 620796

EMAIL

sales@reidlifting.com

WEB

www.reidlifting.com



WEB

