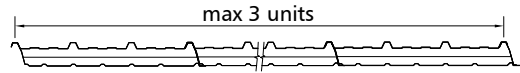


**Filon Products Limited**

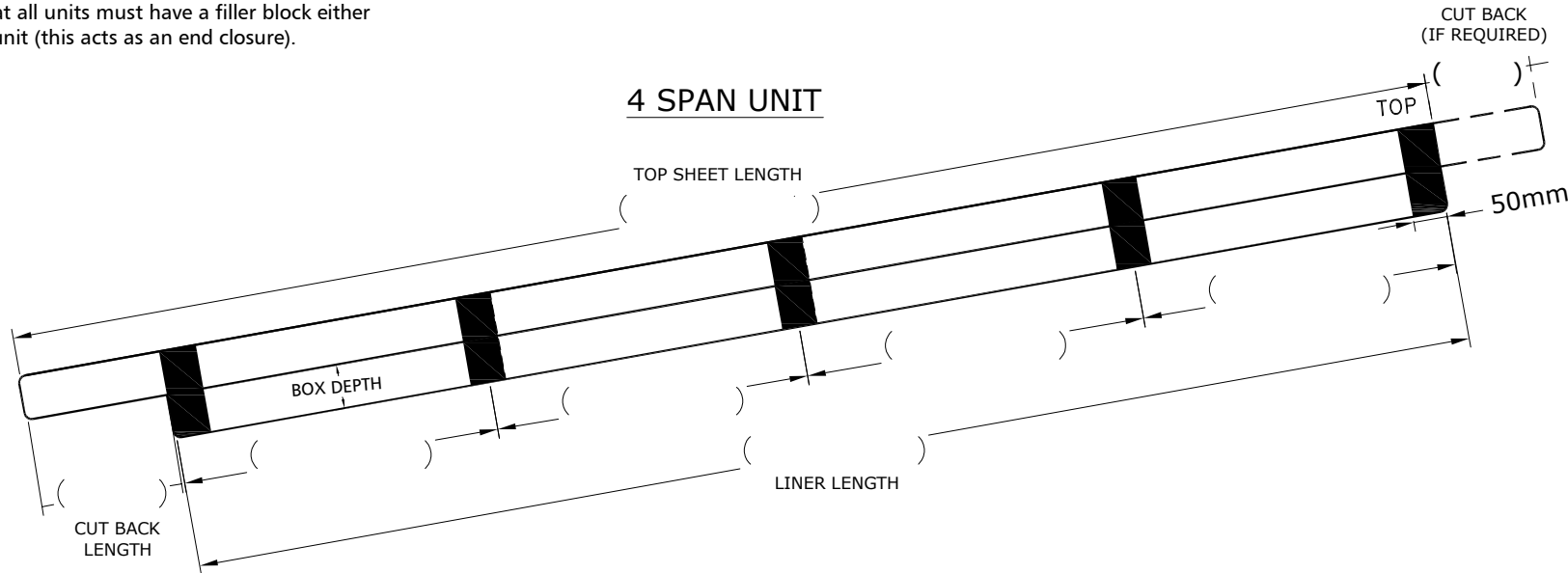
UNIT 3 RING ROAD, ZONE 2 BURNTWOOD BUSINESS PARK  
 BURNTWOOD, STAFFORDSHIRE, ENGLAND WS7 3JQ  
 Tel 01543 687300 Fax 01543 687303  
 sales@filon.co.uk www.filon.co.uk

**CUSTOMER ORDER FORM FOR FACTORY ASSEMBLED INSULATED ROOFLIGHTS (FAIRs)**



**DUE TO MANUFACTURING TOLERANCES WE DO NOT RECOMMEND THAT MORE THAN THREE FAIRS ARE FITTED IN A CONTINUOUS RUN ACROSS THE ROOF WIDTH**

All prices include standard 50mm wide filler blocks, wider filler blocks are available at an additional cost. When calculating number of spans required, please consider that all units must have a filler block either end of the unit (this acts as an end closure).



COMPOSITE SYSTEM PROFILE:	
BOX DEPTH REQ'D:	
QTY REQ'D LEFT TO RIGHT LAY:	
<p>FOR LEFT TO RIGHT LAY AS VIEWED FROM EAVES</p>	
QTY REQ'D RIGHT TO LEFT LAY:	
<p>FOR RIGHT TO LEFT LAY AS VIEWED FROM EAVES</p>	

Please note that we strongly advise against ordering units over 8500mm in length due to handling and logistical issues.

\*For information relating to expected non-fragility periods & Rooflight U values please refer to Filon Technical Data Sheets which are available from our Sales Office & website by visiting: [www.filon.co.uk](http://www.filon.co.uk)

PLEASE NOTE THAT ALL FILON MK3 FAIRS TO SUIT COMPOSITE PANELS ARE FITTED WITH METAL UNDERLAP STRIPS AS STANDARD

**PLEASE TICK REQUIRED NON-FRAGILITY**

*TOP SHEET WEIGHT	
CE24E OUTER SHEET: (minimum weight) Class B to ACR[M]001 (up to 2m span) when new	
CEDR24E OUTER SHEET: Class B to ACR[M]001 (up to 2m span) for 25 years	
CE30E OUTER SHEET: Class B to ACR[M]001 (up to 2m span) for 25 years	
CEDR30E OUTER SHEET: Class B to ACR[M]001 (up to 2.5m span) for 25 years	
CE36E OUTER SHEET: Class B to ACR[M]001 (up to 2.5m span) for 25 years	
SupasafeE OUTER SHEET: Class B to ACR[M]001 for 30 years	

**PLEASE TICK REQUIRED U VALUE**

*U VALUE	
DOUBLE SKIN - 3.0 W/m <sup>2</sup> K : <b>NOT PART L COMPLIANT</b>	
TRIPLE SKIN - STD CONFIGURATION - 1.9 W/m <sup>2</sup> K :	
TRIPLE SKIN - 1.7 W/m <sup>2</sup> K :	
TRIPLE SKIN - 1.3 W/m <sup>2</sup> K :	
OTHER : Please specify U Value req'd	

CUSTOMER NAME:		DATE:	
ORDER NO. :		NAME:	
SPECIAL INSTRUCTIONS:			
DELIVERY ADDRESS:		TOTAL TOP SHEET METREAGE	
		TOTAL LINER METREAGE	