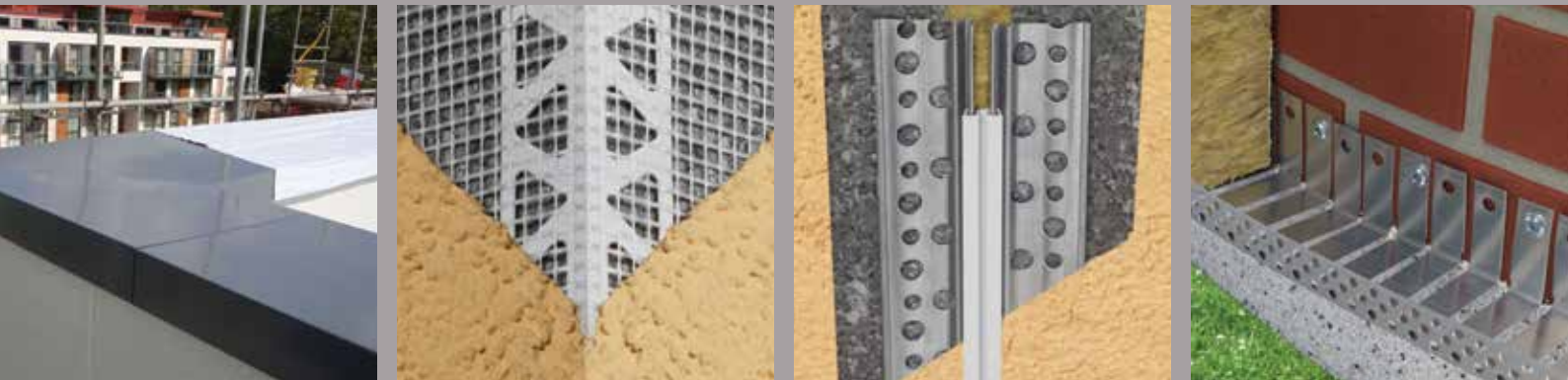
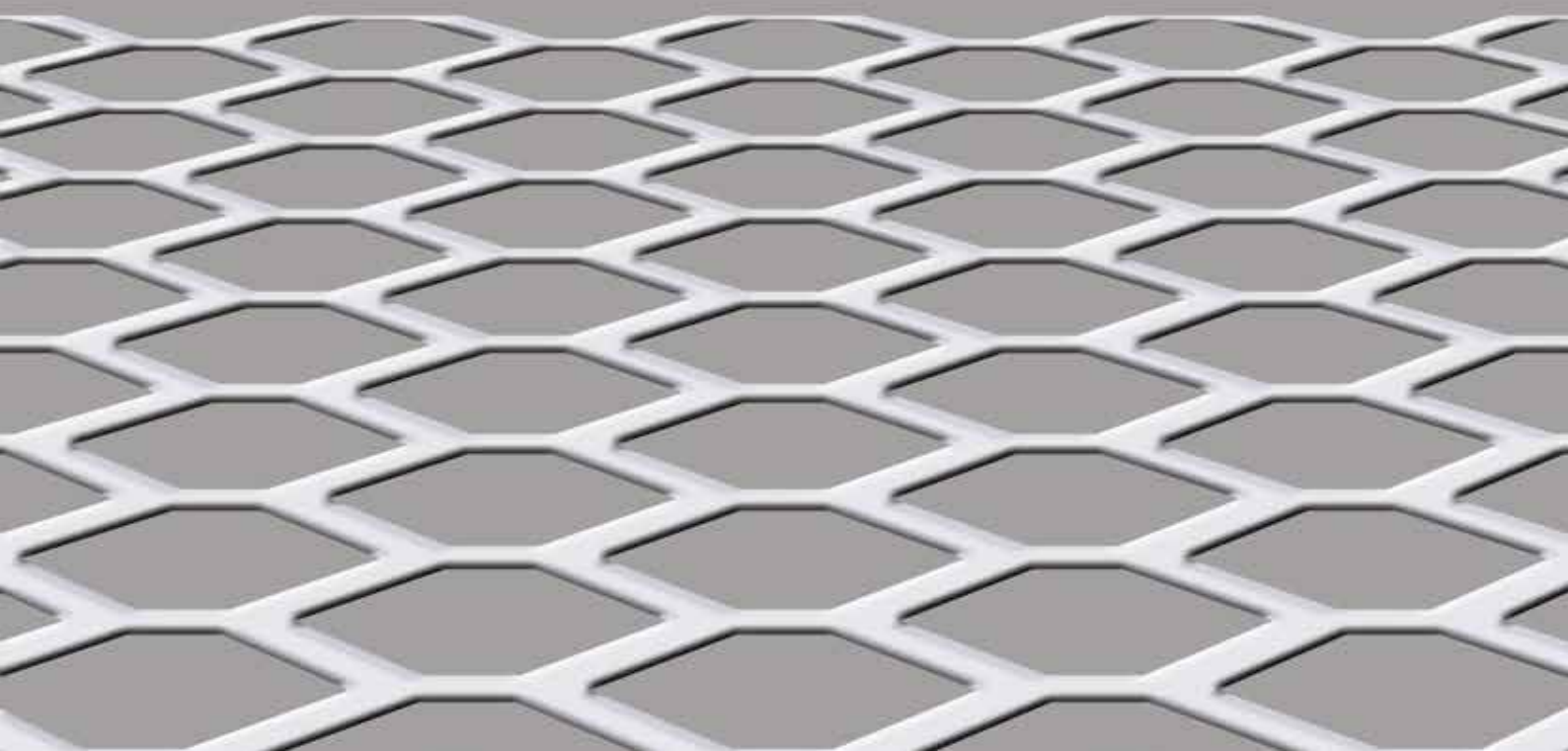


WEMICO



External Wall Insulation Profiles, Render Beads & Custom Fabrication





WEMICO

WESTERN EXPANDED METAL INDUSTRIES COMPANY LIMITED

Established in 1980, Wemico is a market leader in the manufacture and supply of beads and profiles for external wall insulation systems and external rendering.

Being part of the Protektor group of companies, Wemico offers the highest standards of knowledge and service combined with the most comprehensive range of beads, profiles, trims and flashings, leaving the company unrivalled in it's field.

Wemico holds extensive stock levels enabling an excellent level of service, whilst also maintaining uncompromising quality. In addition to this, a specialist fabrication service is available for unique specifications requiring made to measure details.

A professional sales and technical team are on hand to offer advice.

Matthew Lane, Hoo Farm Industrial Estate, Kidderminster, Worcs. DY11 7RA

T: 01562 820123

F: 01562 822012

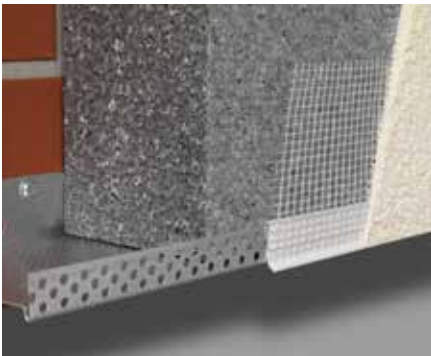
E: sales@wemico.co.uk

www.wemico.com



December 2015

WEMICO RANGE OF PROFILES



PROFILES FOR INSULATION SYSTEMS

| | |
|--|---------|
| SYSTEM STARTER TRACK PROFILES & CLIPS | 4 - 5 |
| SYSTEM STOP PROFILES | 6 |
| SYSTEM STARTER TRACK PROFILES FOR CURVED WALLS | 7 |
| INTEGRATED DRIP BASE PROFILES | 8 |
| HEAVY DUTY 6 SERIES BASE PROFILES | 9 |
| PVC BASE PROFILES | 10 - 11 |
| BRICK SLIP PROFILES | 12 |
| RAIL SYSTEM | 13 |
| MOVEMENT PROFILES | 14 - 15 |
| TOP HAT PROFILES | 16 |



RENDER ONLY BEADS

| | |
|-------------------------------------|---------|
| CORNER BEADS | 17 - 19 |
| STOP BEADS | 20 - 21 |
| WINDOW FRAMESEAL BEADS | 22 |
| BALCONY DRIP / WINDOW HEAD PROFILES | 23 |
| BELLCAST/DRIP BEADS | 24 - 25 |
| MOVEMENT BEADS | 26 - 28 |



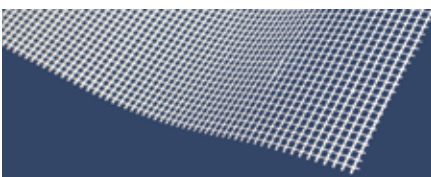
FACADE & VENTILATION PROFILES

| | |
|------------------------|---------|
| FACADE & EDGE PROFILES | 29 |
| VENTILATION PROFILES | 30 - 31 |



TRIMS, FLASHINGS & CUSTOM FABRICATION

| | |
|--------------------------------|---------|
| TRIMS & FLASHINGS | 32 - 33 |
| CUSTOM MADE OVERSILL | 34 |
| CUSTOM FABRICATION | 35 |
| ALUMINIUM COPING | 36 |
| WALL AND CEILING FACADE PANELS | 37 |

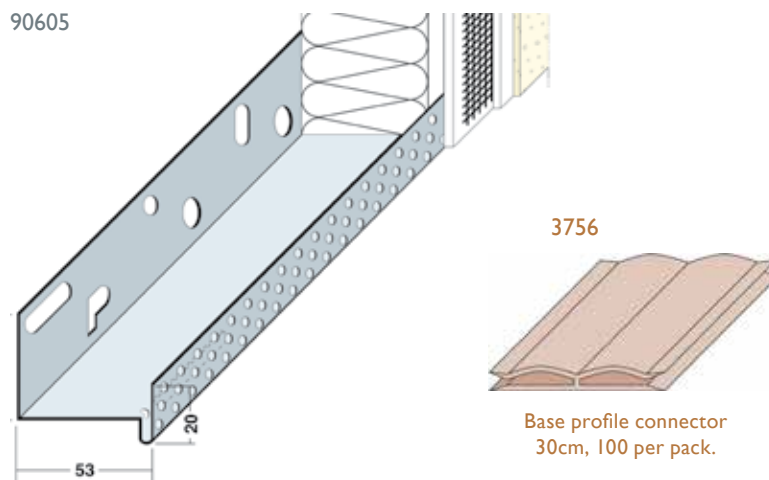


| | |
|-------------------------------------|-----------|
| FIBRE MESH & INSECT MESH | 38 |
|-------------------------------------|-----------|

| | |
|----------------------|-----------|
| PRODUCT INDEX | 39 |
|----------------------|-----------|



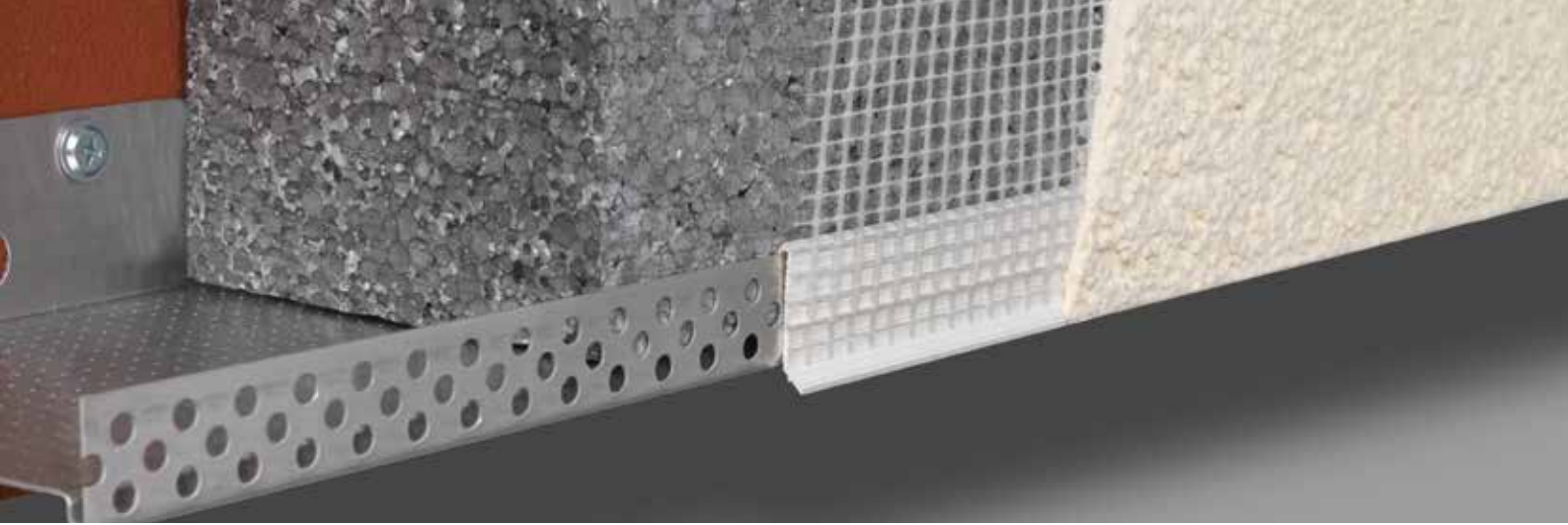
System Starter Track Profiles



Wemico box shaped base profiles for insulation systems, designed for various thicknesses of insulation boards. Aluminium and Stainless Steel - according to recommendations of system manufacturers. Aluminium can be powder coated to any standard RAL colour. Corner profiles are also available to suit.

| Insulation size mm | Clear width mm | Standard Aluminium | Premier 1mm Aluminium | Pre-coated White Alum | Stainless Steel | Length m | Quantity per box |
|--------------------|----------------|--------------------|-----------------------|-----------------------|-----------------|----------|------------------|
| 30 | 33 | 90603 | | | 2143 | 2.5 | 10 |
| 40 | 43 | 90604 | | | 2144 | 2.5 | 10 |
| 50 | 53 | 90605 | | | 2145 | 2.5 | 10 |
| 60 | 63 | 90606 | | | 2146 | 2.5 | 10 |
| 70 | 73 | 90607 | | | 2147 | 2.5 | 10 |
| 80 | 83 | 90608 | | | 2148 | 2.5 | 10 |
| 90 | 93 | 90609 | 91009 | PRE91109 | 2149 | 2.5 | 10 |
| 100 | 103 | 90810 | 91010 | PRE91110 | 2150 | 2.5 | 10 |
| 110 | 113 | 90811 | 91011 | PRE91111 | | 2.5 | 6 |
| 120 | 123 | 90812 | 91012 | PRE91112 | 2112 | 2.5 | 6 |
| 130 | 133 | 90813 | 91013 | PRE91113 | | 2.5 | 6 |
| 140 | 143 | 90814 | 91014 | PRE91114 | 2113 | 2.5 | 6 |
| 150 | 153 | 90815 | 91015 | PRE91115 | | 2.5 | 6 |
| 160 | 163 | 90816 | 91016 | PRE91116 | 2114 | 2.5 | 6 |
| 170 | 173 | | 91017 | PRE91117 | | 2.5 | 6 |
| 180 | 183 | 90818 | 91018 | PRE91118 | | 2.5 | 6 |
| 190 | 193 | | 91019 | PRE91119 | | 2.5 | 6 |
| 200 | 203 | 90820 | 91020 | PRE91120 | | 2.5 | 6 |

Available to order in sizes up to 400mm.



System Starter Track Clips

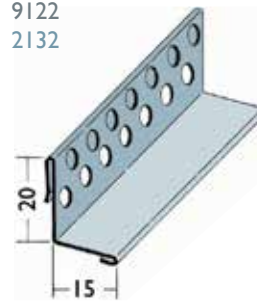
9124
2134



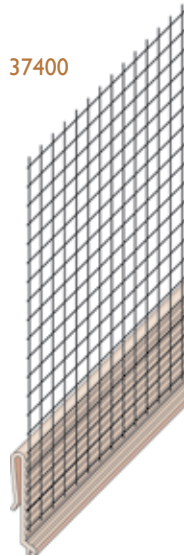
9121
2130



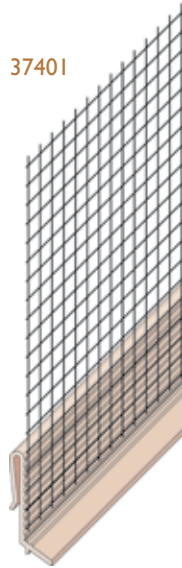
9122
2132



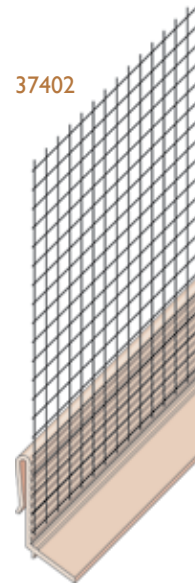
37400



37401



37402



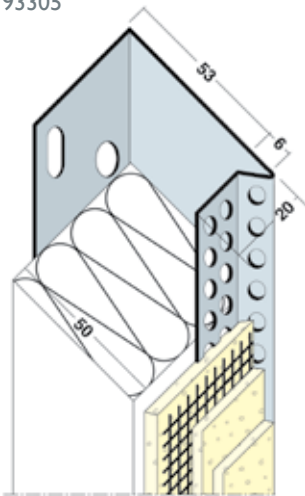
Wemico clips to suit base profiles in a range of render thicknesses.
Available in Stainless Steel, Aluminium and PVC with mesh.

| Render depth mm | Aluminium Ref. number | Stainless Steel Ref. number | PVC Ref. number | Length m | Quantity per box |
|-----------------|-----------------------|-----------------------------|-----------------|----------|------------------|
| 6 | 9124 | 2134 | | 2.5 | 20 |
| 10 | 9121 | 2130 | | 2.5 | 20 |
| 15 | 9122 | 2132 | | 2.5 | 20 |
| 6 | | | 37400 | 2.5 | 15 |
| 10 | | | 37401 | 2.5 | 15 |
| 14 | | | 37402 | 2.5 | 15 |



System Stop Profiles

93305

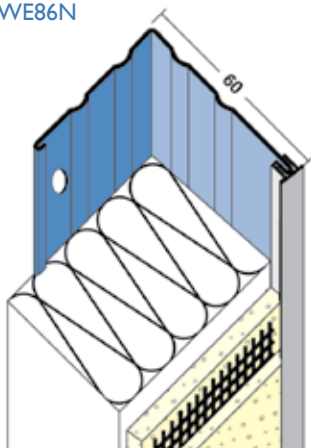


| Insulation size mm | Clear width mm | Aluminium Ref. number | Length m | Quantity per box |
|--------------------|----------------|-----------------------|----------|------------------|
| 40 | 43 | 93304 | 2.5 | 10 |
| 50 | 53 | 93305 | 2.5 | 10 |
| 60 | 63 | 93306 | 2.5 | 10 |
| 70 | 73 | 93307 | 2.5 | 10 |
| 80 | 83 | 93308 | 2.5 | 10 |
| 90 | 93 | 93309 | 2.5 | 10 |
| 100 | 103 | 93310 | 2.5 | 10 |
| 110 | 113 | 93311 | 2.5 | 10 |
| 120 | 123 | 93312 | 2.5 | 10 |

Available to order in sizes of up to 400mm.

Wemico aluminium stop track profiles for insulation systems, designed for various thicknesses of insulation boards. These profiles can be powder coated to any standard RAL colour.

WE86N



| Overall system size mm | Polyester Powder Coated Galvanised Steel Ref. number | Polyester Powder Coated Galv. Steel with PVC Nosing Ref. number | Length m | Stainless Steel Ref. number | Stainless Steel with PVC Nosing Ref. number | Length m |
|------------------------|--|---|----------|-----------------------------|---|----------|
| 30 | WE83 | WE83N | 2.5 | WE83SS | WE83NSS | 2.5 |
| 40 | WE84 | WE84N | 2.5 | WE84SS | WE84NSS | 2.5 |
| 50 | WE85 | WE85N | 3.0 | WE85SS | WE85NSS | 2.5 |
| 60 | WE86 | WE86N | 3.0 | WE86SS | WE86NSS | 2.5 |
| 70 | WE87 | WE87N | 3.0 | WE87SS | WE87NSS | 2.5 |
| 80 | WE88 | WE88N | 3.0 | WE88SS | WE88NSS | 2.5 |
| 90 | WE89 | WE89N | 2.5 | WE89SS | WE89NSS | 2.5 |
| 100 | WE810 | WE810N | 2.5 | WE810SS | WE810NSS | 2.5 |
| 110 | WE811 | WE811N | 2.5 | WE811SS | WE811NSS | 2.5 |
| 120 | WE812 | WE812N | 2.5 | WE812SS | WE812NSS | 2.5 |

Available to order in sizes of up to 400mm.

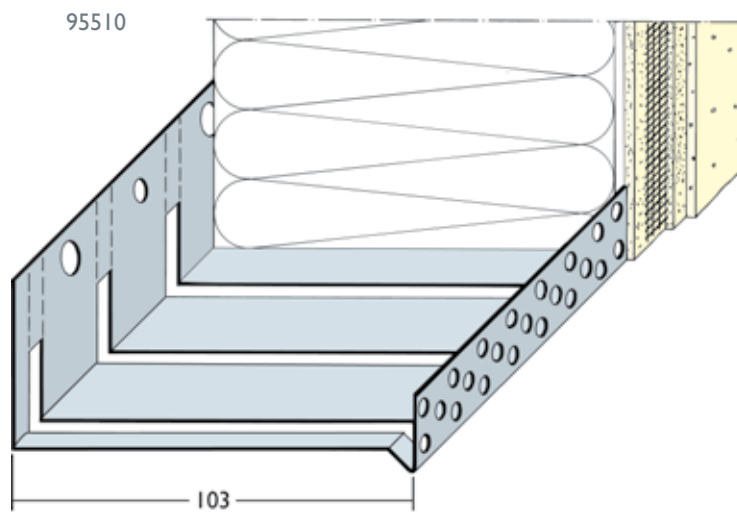
Wemico heavy duty 8 Series stop profiles made from powder coated Galvanised Steel or Stainless Steel with optional PVC nosing which will provide additional protection against abrasion and corrosion.

WEMICO

T: 01562 820123



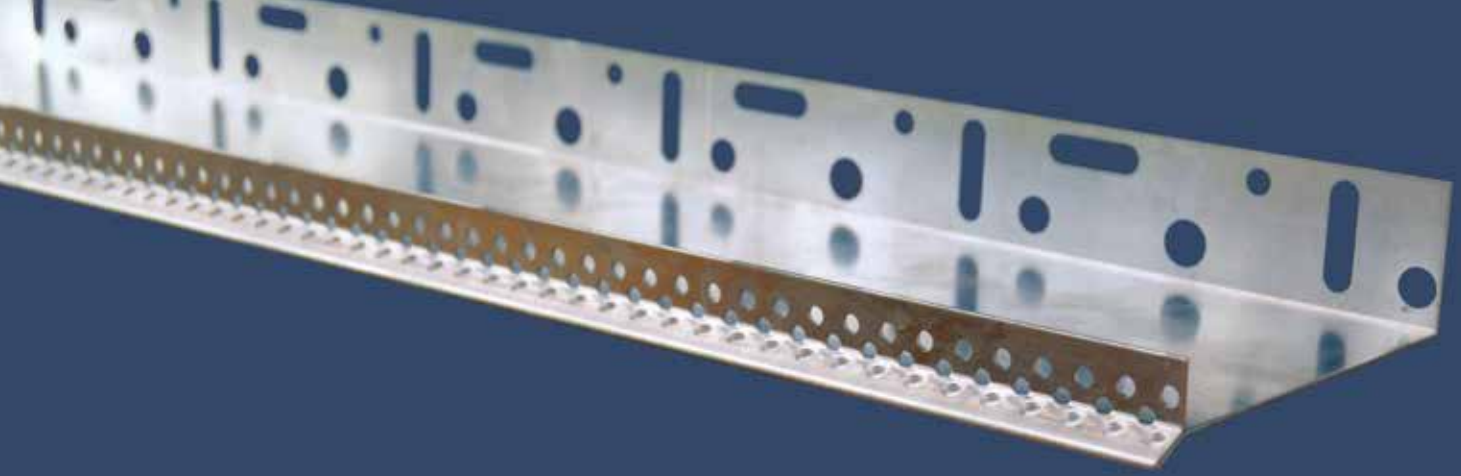
System Starter Track Profiles for Curved Walls



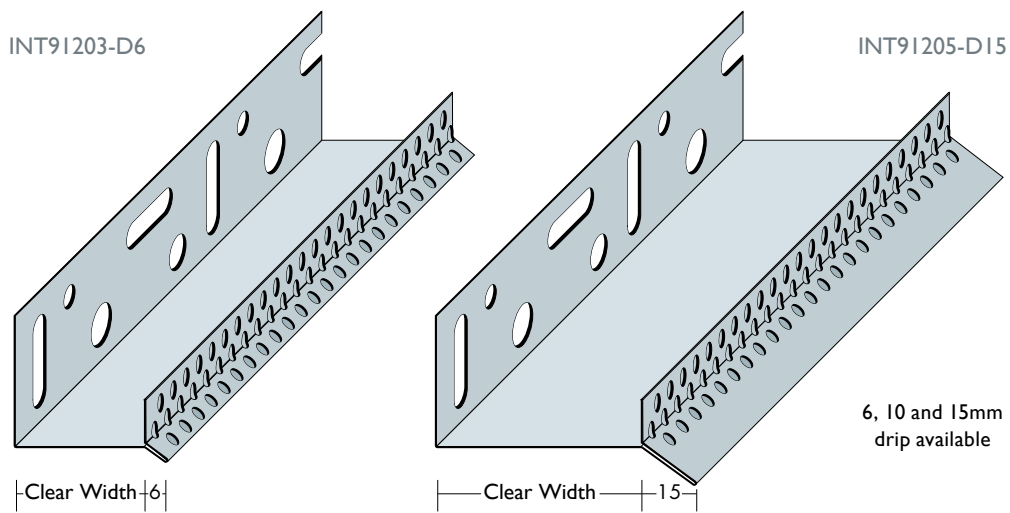
Wemico Starter Track profiles for curved walls. (Slit the back fixing leg and then bend profile around the curve of the wall.)
Observe recommendations of systems manufacturers.

| Insulation size mm | Clear width mm | Aluminium Ref. number | Length m | Quantity per box |
|--------------------|----------------|-----------------------|----------|------------------|
| 30 | 33 | 95503 | 2.5 | 5 |
| 40 | 43 | 95504 | 2.5 | 5 |
| 50 | 53 | 95505 | 2.5 | 5 |
| 60 | 63 | 95506 | 2.5 | 5 |
| 70 | 73 | 95507 | 2.5 | 5 |
| 80 | 83 | 95508 | 2.5 | 5 |
| 90 | 93 | 95509 | 2.5 | 5 |
| 100 | 103 | 95510 | 2.5 | 5 |
| 110 | 113 | 95511 | 2.5 | 5 |
| 120 | 123 | 95512 | 2.5 | 4 |

Available to order in sizes up to 400mm.



Integrated Drip Base Profiles

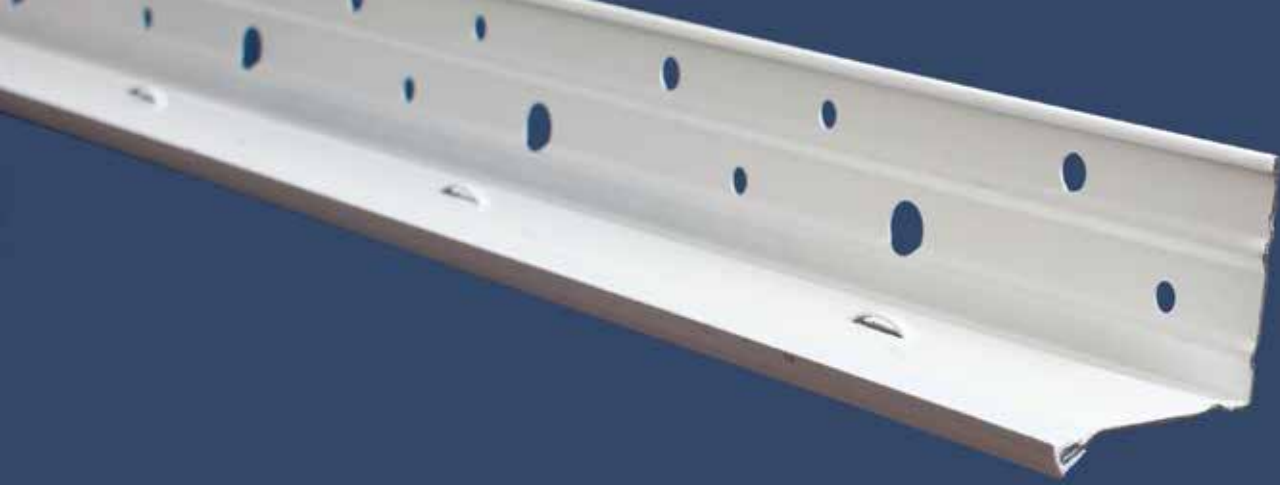


Wemico integrated drip base profiles for insulated systems, designed for various thicknesses of insulation boards and available with a built-in 6, 10 or 15mm drip and in various thicknesses. The profiles are supplied in mill finish aluminium.

| Insulation size | Clear width mm | 6mm Drip 1mm | 10mm Drip 1mm | 15mm Drip 1mm | Length m | Quantity per pack |
|-----------------|----------------|--------------|---------------|---------------|----------|-------------------|
| 30 | 33 | INT91203-D6 | INT91203-D10 | INT91203-D15 | 2.5 | 10 |
| 40 | 43 | INT91204-D6 | INT91204-D10 | INT91204-D15 | 2.5 | 10 |
| 50 | 53 | INT91205-D6 | INT91205-D10 | INT91205-D15 | 2.5 | 10 |
| 60 | 63 | INT91206-D6 | INT91206-D10 | INT91206-D15 | 2.5 | 10 |
| 70 | 73 | INT91207-D6 | INT91207-D10 | INT91207-D15 | 2.5 | 10 |
| 80 | 83 | INT91208-D6 | INT91208-D10 | INT91208-D15 | 2.5 | 10 |
| 90 | 93 | INT91209-D6 | INT91209-D10 | INT91209-D15 | 2.5 | 10 |
| 100 | 103 | INT91210-D6 | INT91210-D10 | INT91210-D15 | 2.5 | 10 |
| 110 | 113 | INT91211-D6 | INT91211-D10 | INT91211-D15 | 2.5 | 10 |
| 120 | 123 | INT91212-D6 | INT91212-D10 | INT91212-D15 | 2.5 | 10 |
| 130 | 133 | INT91213-D6 | INT91213-D10 | INT91213-D15 | 2.5 | 10 |
| 140 | 143 | INT91214-D6 | INT91214-D10 | INT91214-D15 | 2.5 | 10 |
| 150 | 153 | INT91215-D6 | INT91215-D10 | INT91215-D15 | 2.5 | 10 |

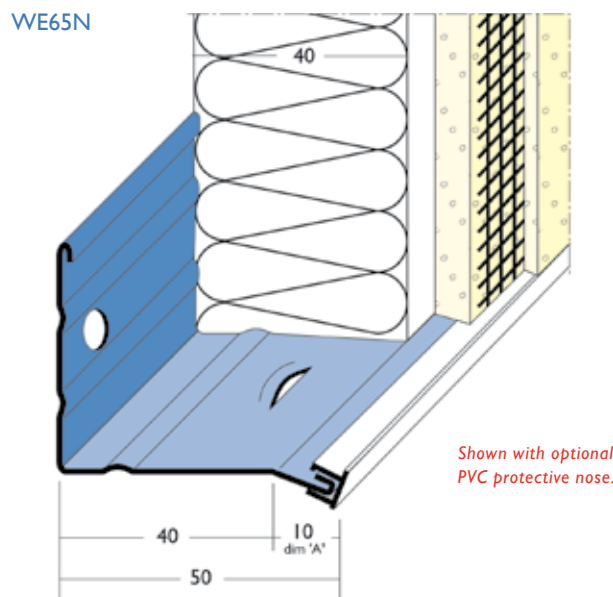
Codes show 1.2mm thick material.

These profiles are also available in 0.8mm and 1.0mm material thickness.



Heavy Duty 6 Series Base Profiles

BASE PROFILE
 available in sizes
 25mm - 300mm
 The drip section increases
 from 10mm to 30mm on
 any Base Profiles over
 70mm deep.



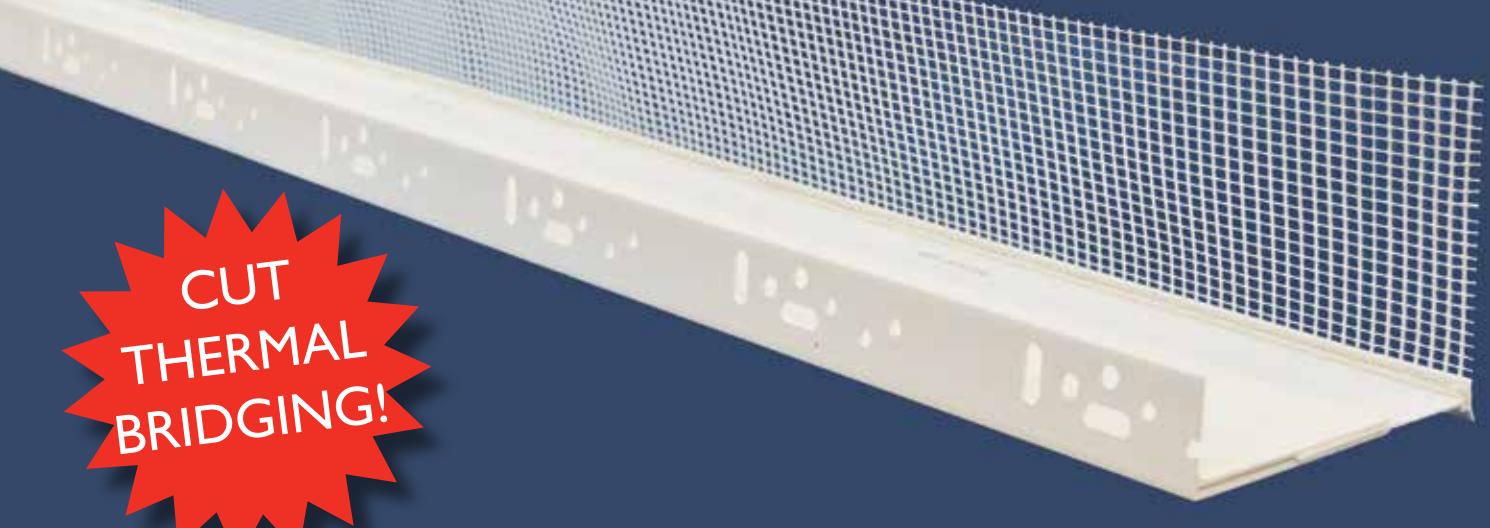
Wemico heavy duty 6 series base profiles for insulated systems made from powder coated Galvanised Steel or Stainless Steel with optional PVC nosing which will provide additional protection against abrasion and corrosion.

External and internal corners and additional sizes made to order.

| Overall system size mm | Polyester Powder Coated Galv. Steel Ref. number | Polyester Powder Coated Galv. Steel with PVC Nosing Ref. number | Length m | Stainless Steel Ref. number | Stainless Steel with PVC Nosing Ref. number | Length m |
|------------------------|---|---|----------|-----------------------------|---|----------|
| 25 | WE625 | WE625N | 2.5 | WE625SS | WE625NSS | 2.5 |
| 30 | WE63 | WE63N | 2.5 | WE63SS | WE63NSS | 2.5 |
| 40 | WE64 | WE64N | 3.0 | WE64SS | WE64NSS | 2.5 |
| 50 | WE65 | WE65N | 3.0 | WE65SS | WE65NSS | 2.5 |
| 60 | WE66 | WE66N | 3.0 | WE66SS | WE66NSS | 2.5 |
| 70 | WE67 | WE67N | 3.0 | WE67SS | WE67NSS | 2.5 |
| 80 | WE68 | WE68N | 3.0 | WE68SS | WE68NSS | 2.5 |
| 90 | WE69 | WE69N | 2.5 | WE69SS | WE69NSS | 2.5 |
| 100 | WE610 | WE610N | 2.5 | WE610SS | WE610NSS | 2.5 |
| 110 | WE611 | WE611N | 2.5 | WE611SS | WE611NSS | 2.5 |
| 120 | WE612 | WE612N | 2.5 | WE612SS | WE612NSS | 2.5 |

Available in larger sizes to order.

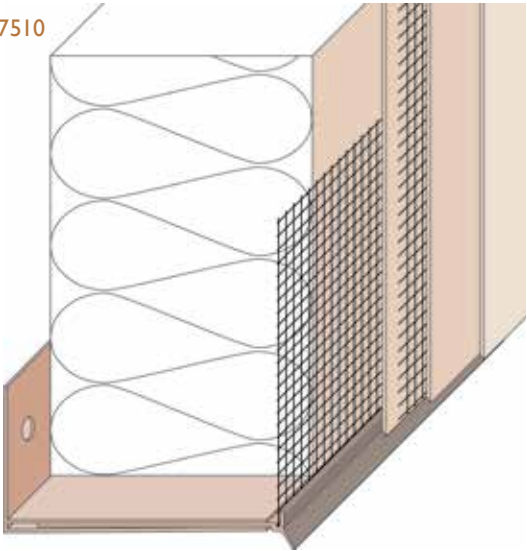
**CUT
THERMAL
BRIDGING!**



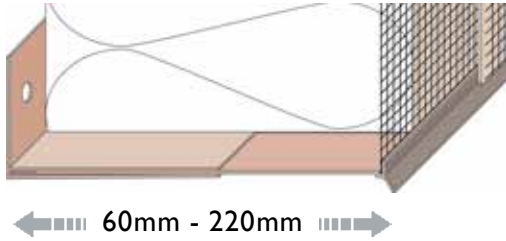
Adjustable PVC Base Profiles

Wemico's range of PVC base rail profiles have been designed to cut thermal bridging and are adjustable to suit insulation thicknesses from 60mm to 220mm.

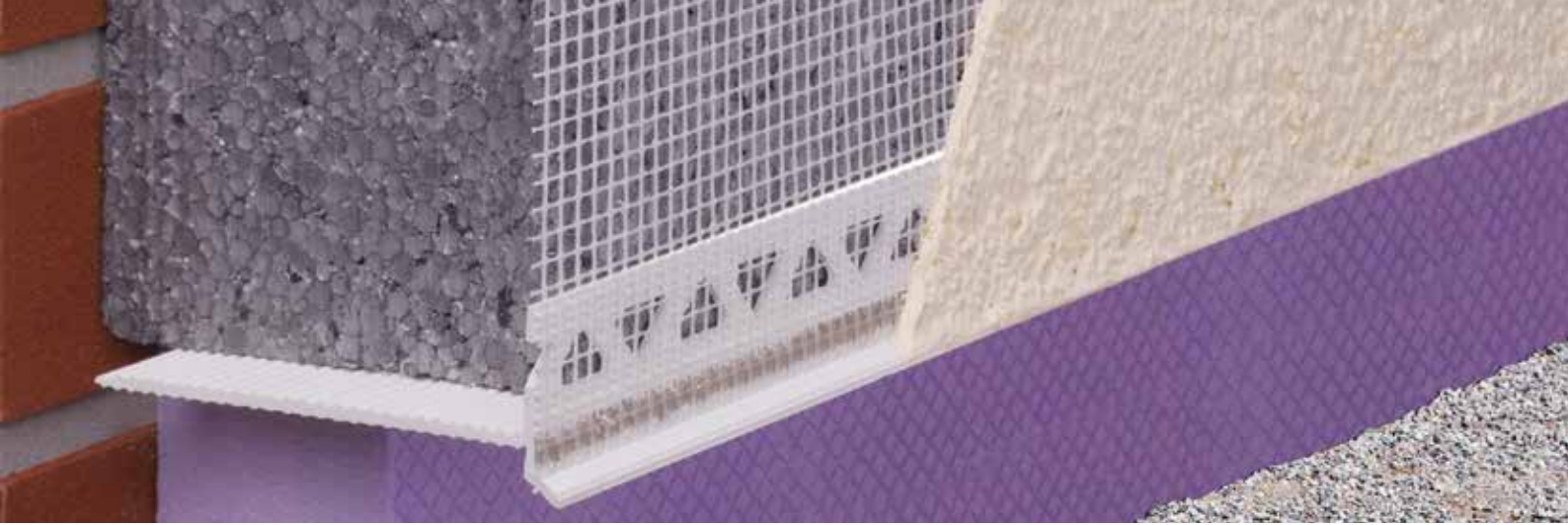
37510



- Adjustable to suit various insulation sizes.
- Helps to avoid thermal bridging.
- Attached mesh aids render adhesion.
- Stocking advantage.
- Robust and shock resistant.
- Maintenance free and rustproof.
- Easy to cut and safer to handle.



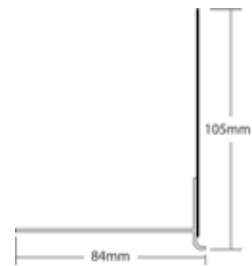
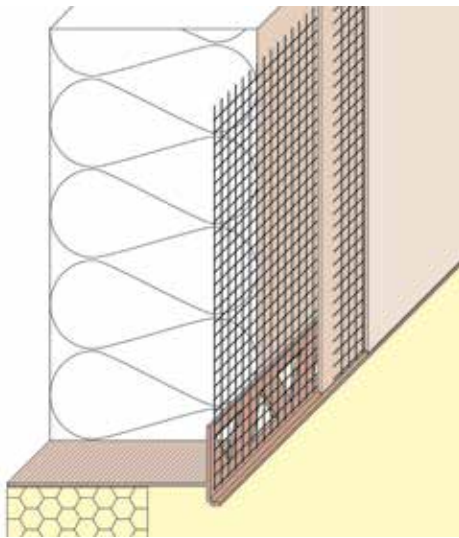
| Width mm | Render depth mm | PVC Ref. number | Length m | Quantity per box |
|-------------|-----------------------|--------------------|-------------|---------------------|
| 60 - 90 | 6 | 37510A | 2.0 | 10 |
| 100 - 160 | 6 | 37510 | 2.0 | 10 |
| 160 - 220 | 6 | 37522 | 2.0 | 10 |



PVC Base Profile

For use between facade and base insulations. Available in a range of render thicknesses.

37500

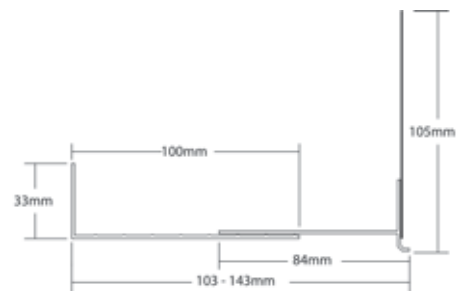
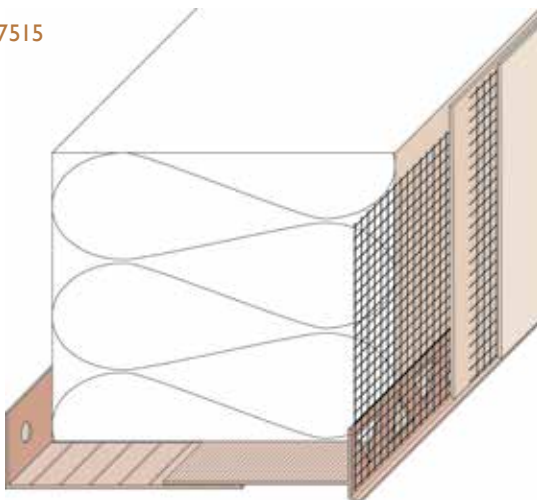


| Render depth mm | PVC Ref. number | Length m | Quantity per box |
|--------------------|--------------------|-------------|---------------------|
| 6 | 37500 | 2.0 | 15 |
| 10 | 37501 | 2.0 | 15 |
| 14 | 37502 | 2.0 | 15 |

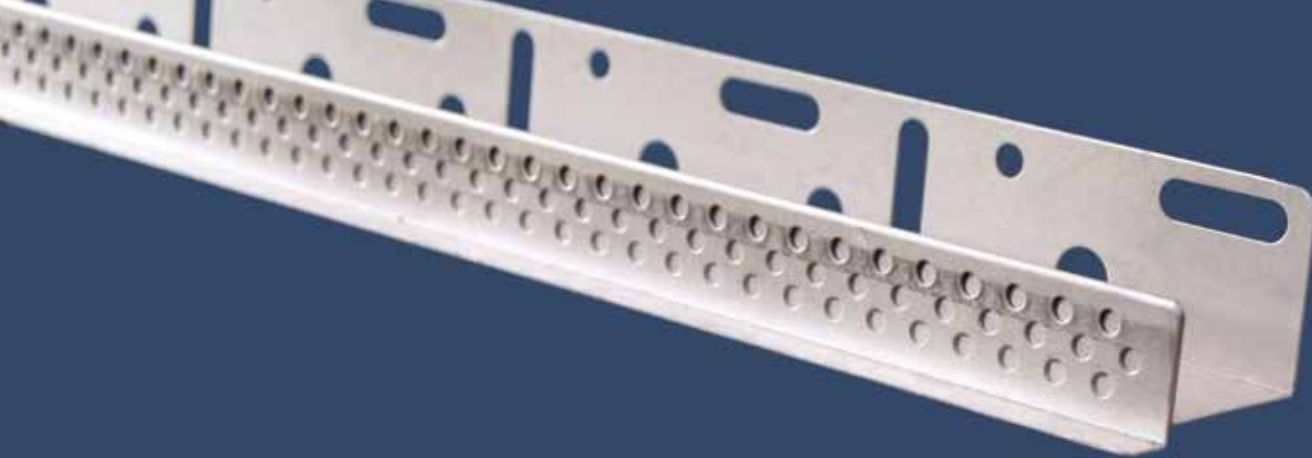
PVC Angle Bracket

For use in conjunction with the 37500 range, to provide support in the absence of any base insulation.

37515

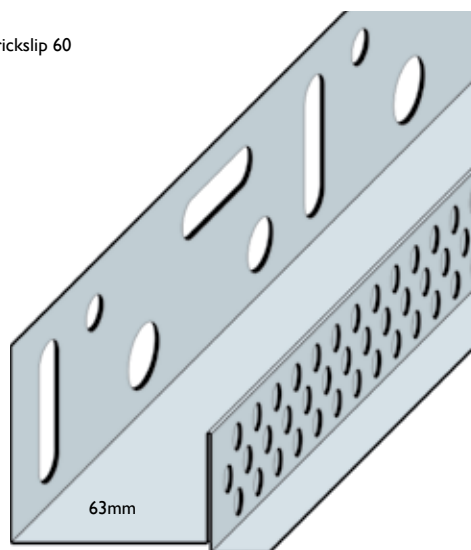


| PVC ANGLE SECTION | PVC Ref. number | Length m | Quantity per box |
|-------------------------|--------------------|-------------|---------------------|
| | 37515 | 2.0 | 15 |



Brick Slip Profiles

Brickslip 60



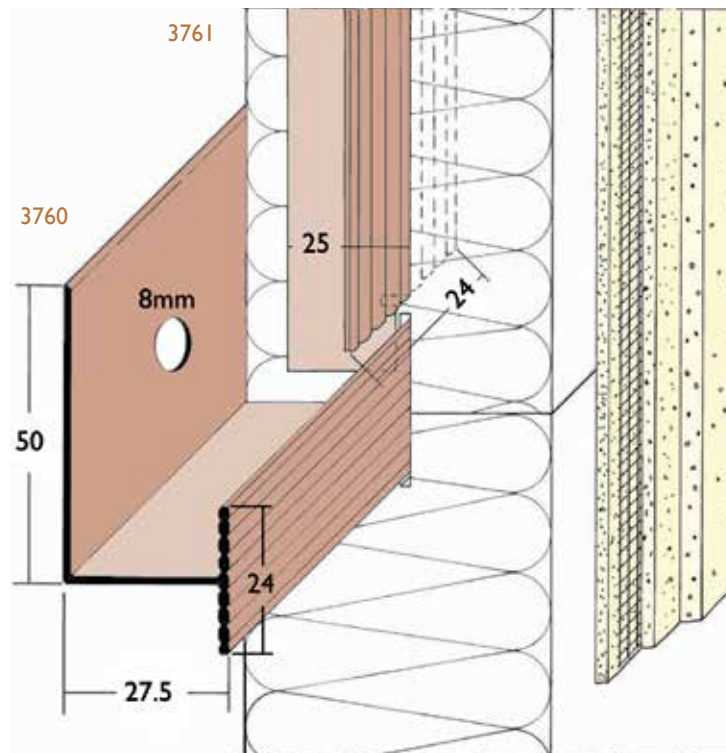
Wemico aluminium brickslip profiles for use in insulation systems finished with a brick slip detail. These profiles can be powder coated to any standard RAL colour.

| Insulation size mm | Clear width mm | Aluminium Ref. number | Length m |
|--------------------|----------------|-----------------------|----------|
| 30 | 33 | Brickslip30 | 2.5 |
| 40 | 43 | Brickslip40 | 2.5 |
| 50 | 53 | Brickslip50 | 2.5 |
| 60 | 63 | Brickslip60 | 2.5 |
| 70 | 73 | Brickslip70 | 2.5 |
| 80 | 83 | Brickslip80 | 2.5 |
| 90 | 93 | Brickslip90 | 2.5 |
| 100 | 103 | Brickslip100 | 2.5 |
| 110 | 113 | Brickslip110 | 2.5 |
| 120 | 123 | Brickslip120 | 2.5 |

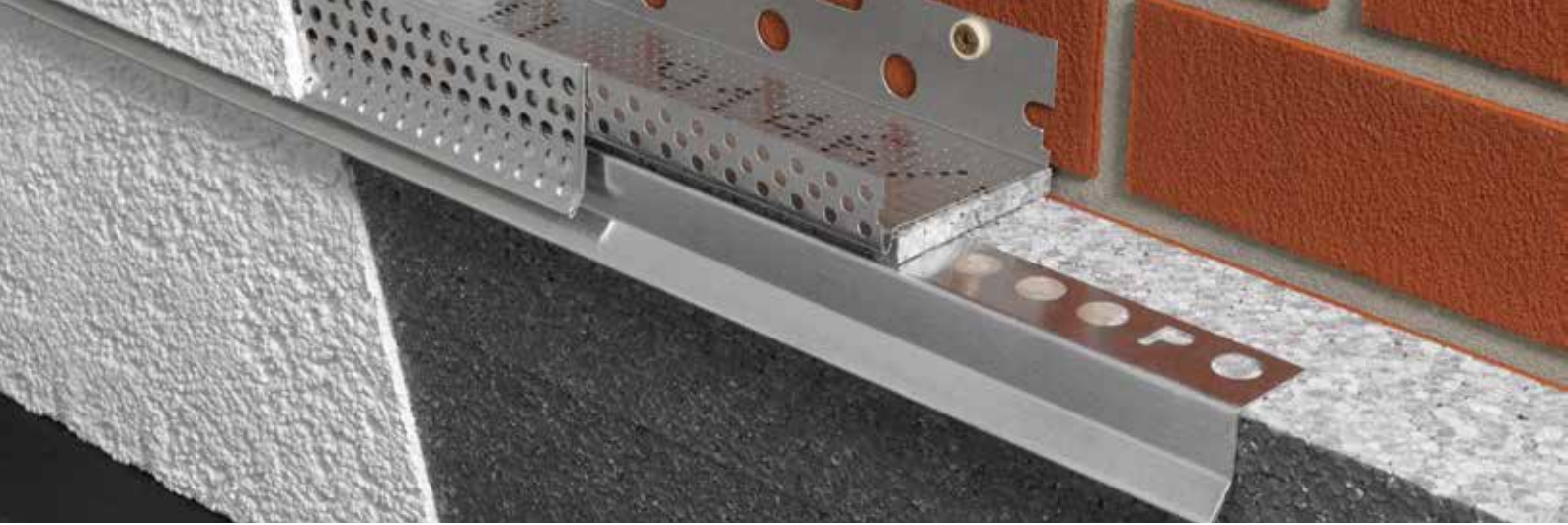
Available in larger sizes to order.



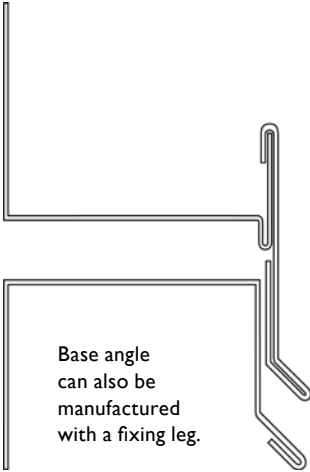
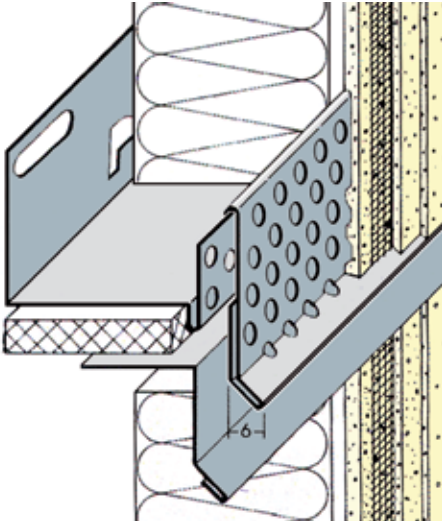
Rail System



| PVC Ref. number | Aluminium Ref. number | Length m | Quantity per box |
|-----------------|-----------------------|-------------------|------------------|
| 3760 | | 2.5 | 25 |
| 3761 | | 49.5 = board 50cm | 100 |
| | 9115 | 47 = board 50cm | 100 |
| | 9116 | 2.0 | 25 |



Full System Horizontal Movement Joints



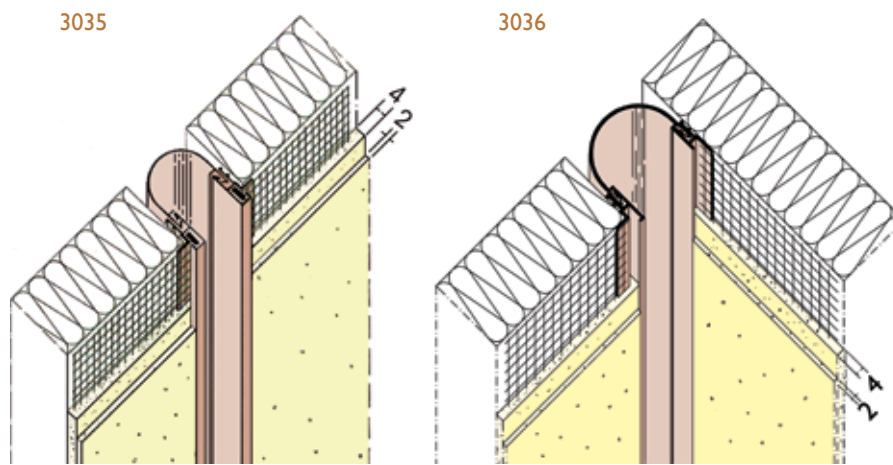
Three part horizontal movement joint to suit insulation systems, incorporating system starter track profiles with a clip and angle section for various insulation and render thicknesses. Aluminium profiles can be powder coated to any standard RAL colour.



| Render depth mm | Aluminium Ref. number | Stainless Steel Ref. number | Length m | Quantity per box |
|-----------------|-----------------------|-----------------------------|----------|------------------|
| 6 | 9181 | | 2.5 | 20 |
| 6 | 9182 | | 2.5 | 20 |
| 6 | | 2151 | 2.5 | 10 |
| 6 | | 2152 | 2.5 | 10 |
| 15 | | 2141 | 2.5 | 10 |
| 15 | | 2142 | 2.5 | 10 |

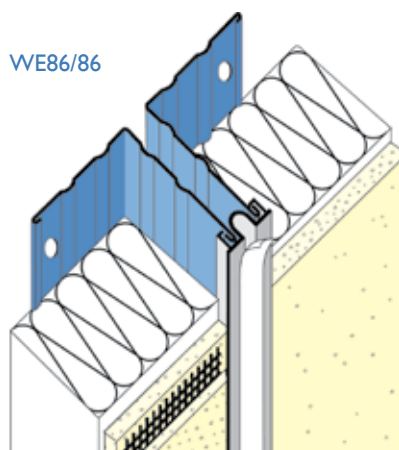


Movement Profiles for Insulation Systems



Wemico expansion joint profiles with soft PVC centre section for insulation systems, with alkali-resistant glassfibre mesh. Movement: +/-5mm. This profile is recommended for vertical use only.

| Render depth mm | PVC Ref. number | Length m | Quantity per box |
|-----------------|-----------------|----------|------------------|
| 6 | 3035 | 2.5 | 25 |
| 6 | 3036 | 2.5 | 25 |

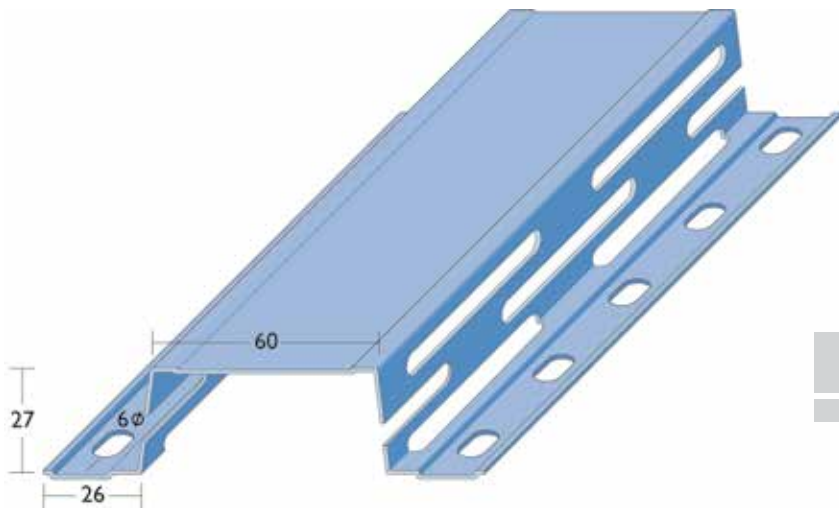


| Overall system size mm | Polyester Powder Coated Galvanised Steel Ref. number | Length m | Stainless Steel Ref. number | Length m | Mesh type |
|------------------------|--|----------|-----------------------------|----------|-----------------|
| 40 | WE84/84 | 3.0 | WE84/84SS | 2.5 | Perforated wing |
| 50 | WE85/85 | 3.0 | WE85/85SS | 2.5 | Perforated wing |
| 60 | WE86/86 | 3.0 | WE86/86SS | 2.5 | Perforated wing |
| 70 | WE87/87 | 3.0 | WE87/87SS | 2.5 | Perforated wing |
| 80 | WE88/88 | 3.0 | WE88/88SS | 2.5 | Perforated wing |
| 90 | WE89/89 | 3.0 | WE89/89SS | 2.5 | Perforated wing |
| 100 | WE810/810 | 3.0 | WE810/810SS | 2.5 | Perforated wing |

Available to order in sizes of up to 400mm.

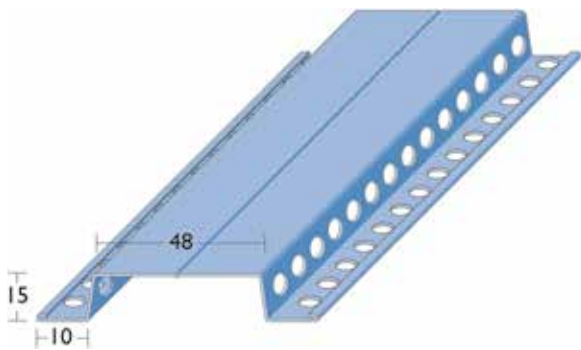


Top Hat Profiles



| Galvanised Steel Ref. number | Length m | No. per bundle |
|------------------------------|----------|----------------|
| 5007 | 3.0 | Single |

Galvanised Steel - available powder coated if required.
Available in various material thicknesses and with or without side slots.

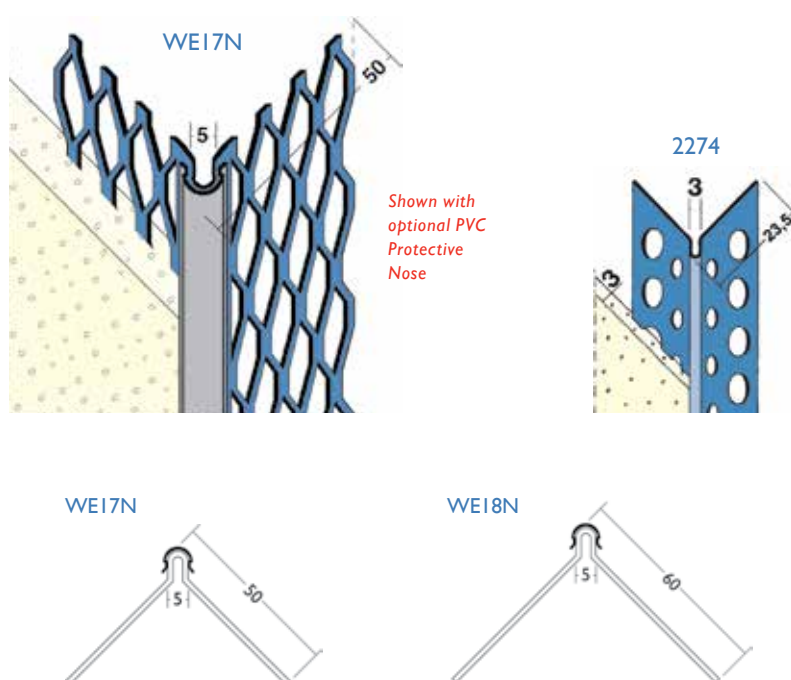


| Galvanised Steel Ref. number | Length m | No. per bundle |
|------------------------------|----------|----------------|
| 5112 | 3.0 | Single |

Galvanised Steel - available powder coated if required.

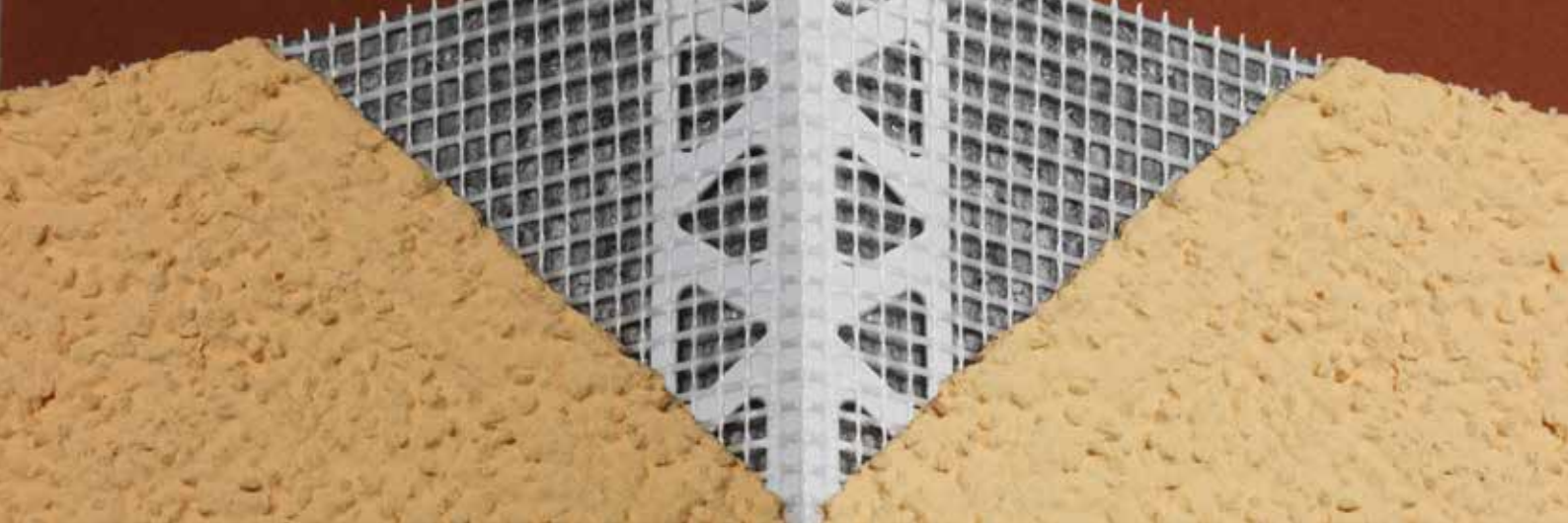


Corner Beads - Powder Coated & Stainless Steel

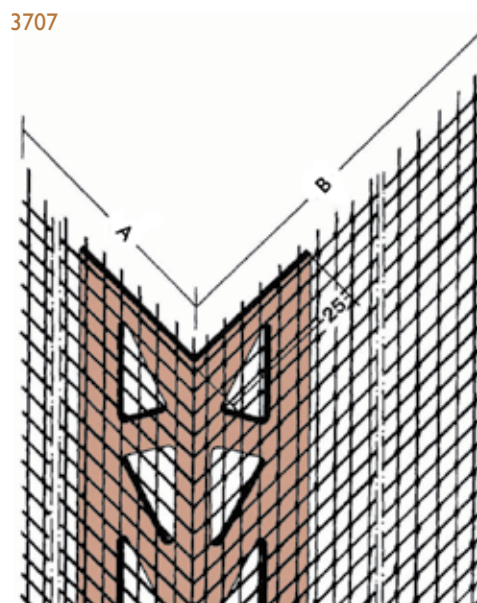


Wemico corner beads made from powder coated Galvanised Steel, Aluminium or Stainless Steel with optional PVC nosing available on certain profiles, which will provide additional protection against abrasion and corrosion.

| Render depth mm | Polyester Powder Coated Galvanised Steel | Polyester Powder Coated Galv. Steel with PVC Nosing | Stainless Steel Ref. number | Stainless Steel with PVC Nosing | Length m |
|-----------------|--|---|-----------------------------|---------------------------------|----------|
| 10-20 | WE17 | WE17N | WE17SS | WE17NSS | 3.0 |
| 10-25 | WE18 | WE18N | WE18SS | WE18NSS | 3.0 |
| 3-20 | | | 2274 | | 2.5 |

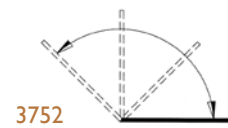


Mesh Wing Corner Beads

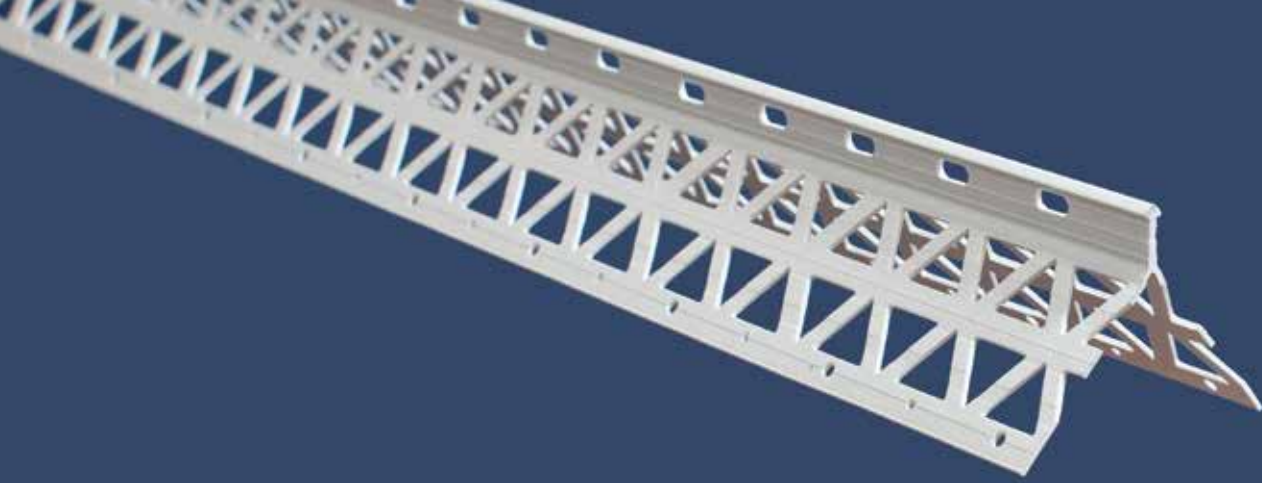


9075/2031/3707 Wemico corner beads made from Aluminium, Stainless Steel and PVC with alkali resistant glassfibre mesh wings.

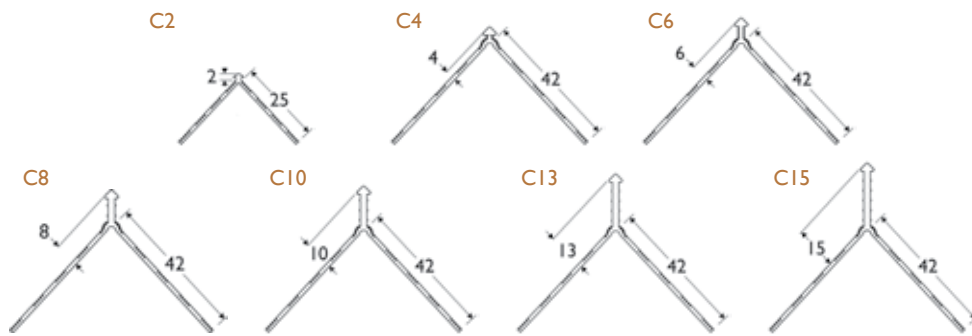
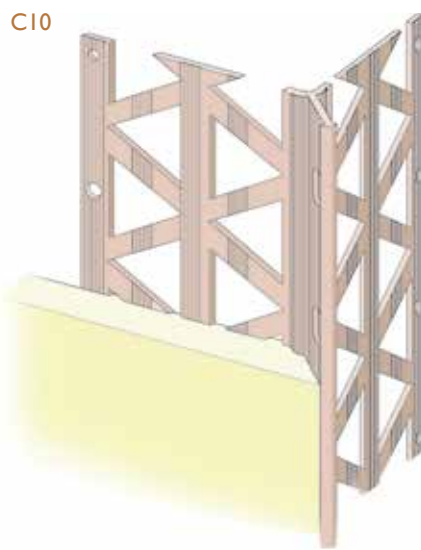
3752 PVC Corner profile is supplied on a 50m roll, which allows it to be cut to the required length and reduces waste. The “fold” enables a range of angles.



| Dimension A mm | Dimension B mm | Aluminium Ref. number | Stainless Steel Ref. number | PVC Ref. number | Length m | Quantity per box |
|-------------------|-------------------|--------------------------|--------------------------------|--------------------|-------------|---------------------|
| 100 | 150 | 9075 | | | 2.5 | 50 |
| 100 | 150 | | 2031 | | 2.5 | 50 |
| 80 | 120 | | | 3799 | 2.5 | 100 |
| 90 | 110 | | | 3752 | 50 roll | 1 roll |
| 100 | 150 | | | 3707 | 2.5 | 50 |



PVC Corner Beads



| Render depth mm | PVC Ref. number | Length m | Quantity per box |
|-----------------|-----------------|----------|------------------|
| 2-3 | C2 | 2.5 | 25 |
| 4-6 | C4 | 2.5 | 25 |
| 6-8 | C6 | 2.5 | 25 |
| 8-10 | C8 | 2.5 | 25 |
| 10-12 | C10 | 2.5 | 25 |
| 13-15 | C13 | 2.5 | 25 |
| 15-17 | C15 | 2.5 | 25 |

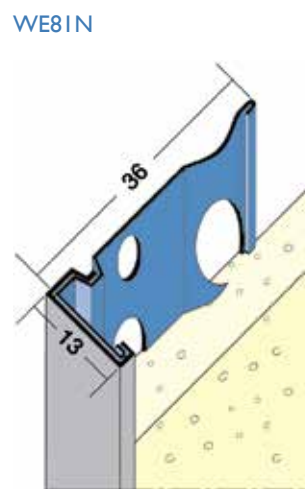
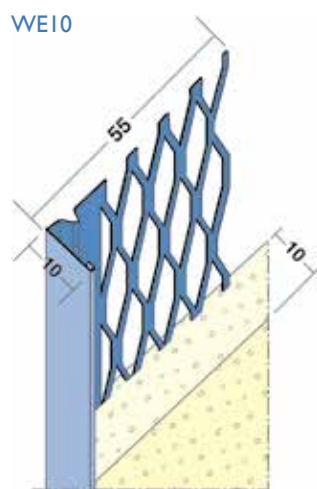
COLOURS

All profiles are available in white and ivory.
10 & 15mm beads are also available in this range of colours.





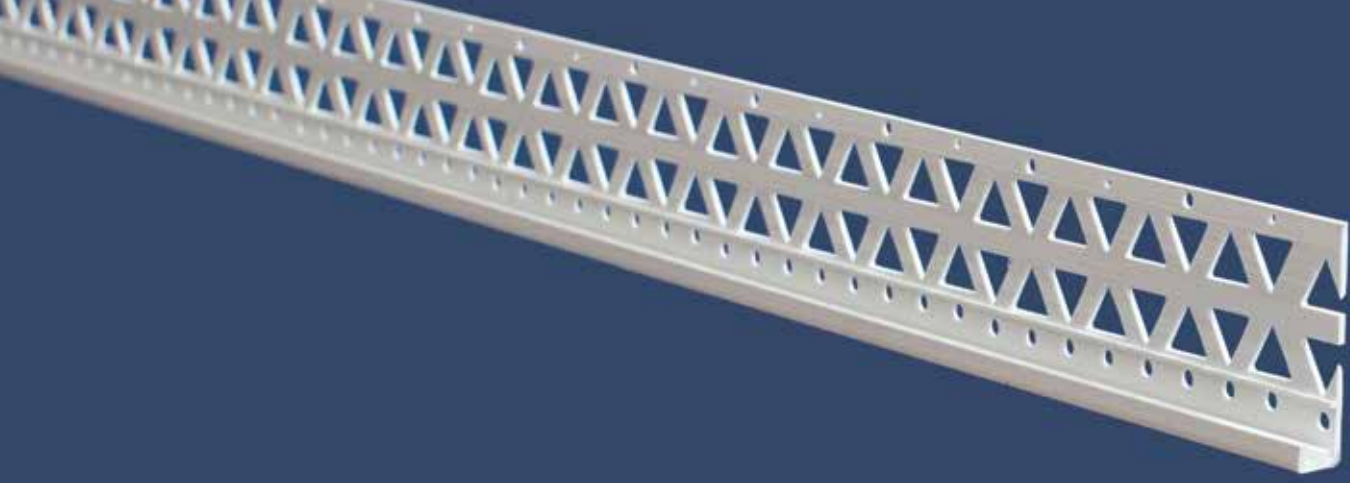
Render Stop Beads



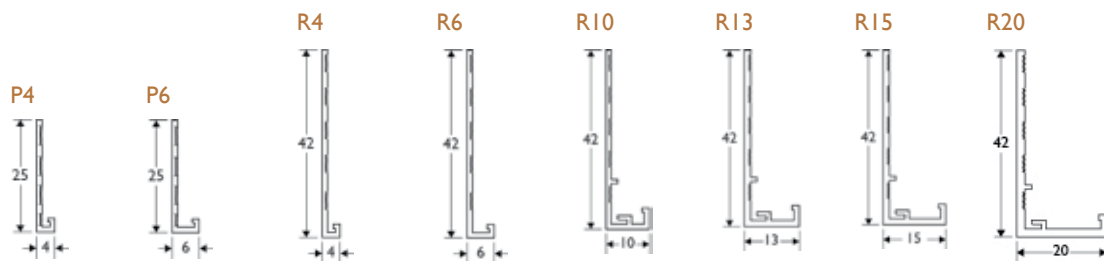
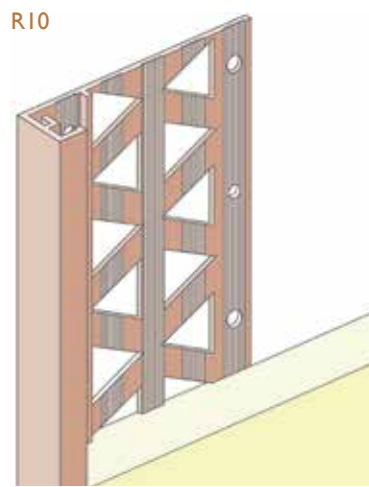
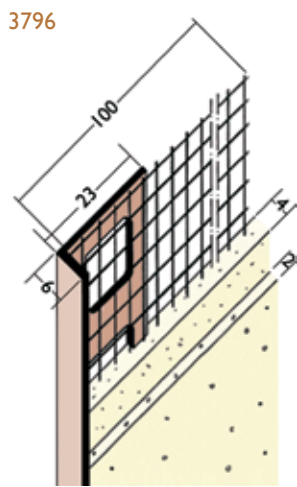
Shown with optional PVC Protective Nose

Wemico stop beads made from powder coated Galvanised Steel or Stainless Steel, in a choice of mesh or perforated wing, with optional PVC nosing which will provide additional protection against abrasion and corrosion.

| Render depth mm | Polyester Powder Coated Galvanised Steel | Polyester Powder Coated Galv. Steel with PVC Nosing | Stainless Steel Ref. number | Stainless Steel with PVC Nosing | Length m | Wing type |
|-----------------|--|---|-----------------------------|---------------------------------|----------|-----------------|
| 10 | WE10 | WE10N | WE10SS | WE10NSS | 3.0 | Mesh wing |
| 13 | WE13 | WE13N | WE13SS | WE13NSS | 3.0 | Mesh wing |
| 16 | WE16 | WE16N | WE16SS | WE16NSS | 3.0 | Mesh wing |
| 20 | WE22 | WE22N | WE22SS | WE22NSS | 3.0 | Mesh wing |
| 6 | WE79 | | WE79SS | | 3.0 | Perforated wing |
| 10 | WE80 | WE80N | WE80SS | WE80NSS | 3.0 | Perforated wing |
| 13 | WE81 | WE81N | WE81SS | WE81NSS | 3.0 | Perforated wing |
| 16 | WE806 | WE806N | WE806SS | WE806NSS | 3.0 | Perforated wing |
| 20 | WE82 | WE82N | WE82SS | WE82NSS | 3.0 | Perforated wing |



PVC Stop Beads



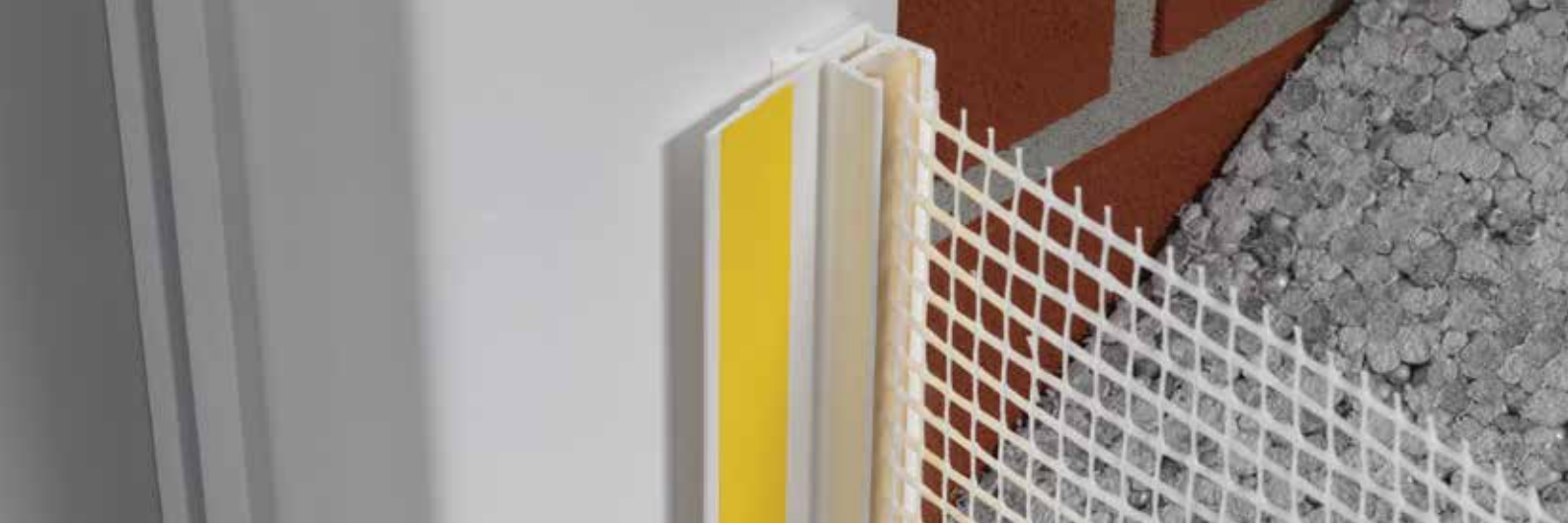
Wemico PVC render stop bead with alkali-resistant glassfibre mesh available in 4 different sizes.

| Render depth mm | PVC Ref. number | Length m | Quantity per box |
|-----------------|-----------------|----------|------------------|
| 3 | 3793 | 2.5 | 50 |
| 6 | 3796 | 2.5 | 50 |
| 11 | 3791 | 2.5 | 40 |
| 14 | 37914 | 2.5 | 40 |

| Render depth mm | PVC Ref. number | Length m | Quantity per box |
|-----------------|-----------------|----------|------------------|
| 4 | P4 | 2.5 | 25 |
| 6-8 | P6 | 2.5 | 25 |
| 4 | R4 | 2.5 | 25 |
| 6-8 | R6 | 2.5 | 25 |
| 10-12 | R10 | 2.5 | 25 |
| 13-15 | R13 | 2.5 | 25 |
| 15-17 | R15 | 2.5 | 25 |
| 20-22 | R20 | 2.5 | 25 |

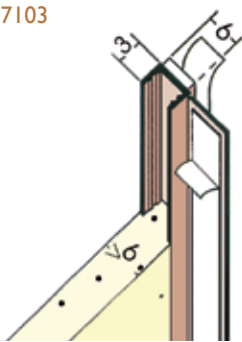
COLOURS: All profiles are available in white and ivory. 10 & 15mm beads are also available in this range of colours.



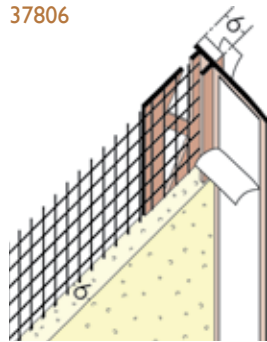


PVC Window Frameseal Beads

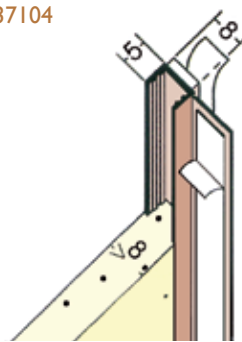
37103



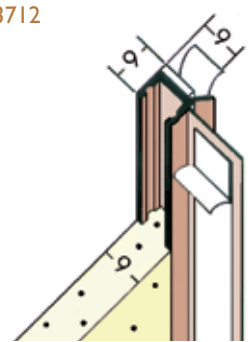
37806



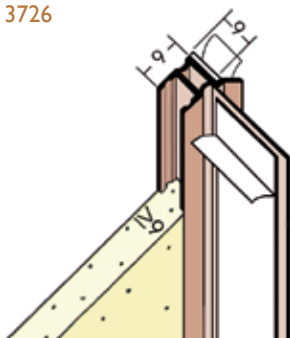
37104



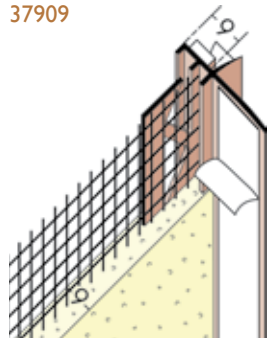
3712



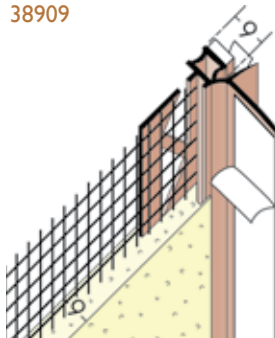
3726



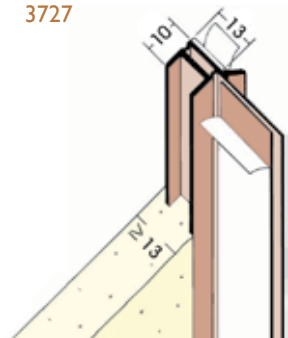
37909



38909



3727



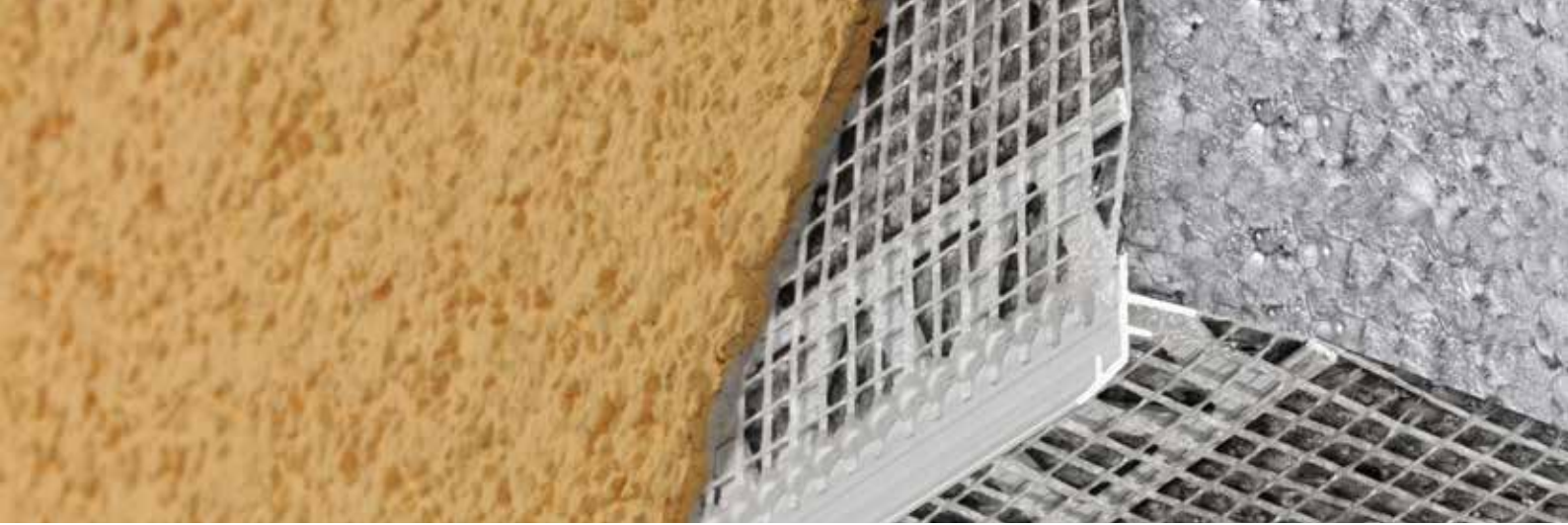
Wemico self adhesive PVC profile for use on window reveals or door frames.

Attached to the frame with a foam tape, the frameseal has an adhesive strip to enable use of a protective film to be applied during the rendering process, which is snapped off on completion.

| Render thickness mm | PVC Ref. number | Length m | Quantity per box |
|------------------------|--------------------|-------------|---------------------|
| 6 | 37103 | 2.6 | 50 |
| 6 | 37806 | 2.6 | 50 |
| 8 | 37104 | 2.6 | 60 |
| 9 | 3712 | 2.6 | 60 |
| 9 | 3726 | 2.6 | 50 |
| 9 | 37909 | 2.6 | 50 |
| 9 | 38909 | 2.6 | 50 |
| 13 | 3727 | 2.6 | 40 |

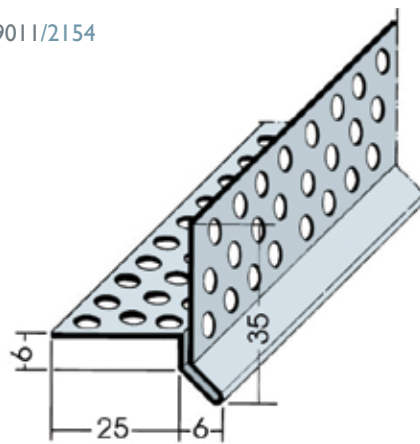
WEMICO

T: 01562 820123

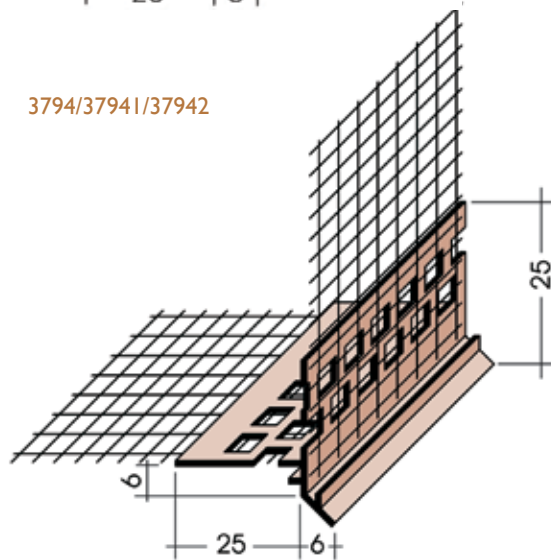


Balcony Drip / Window Head Profiles

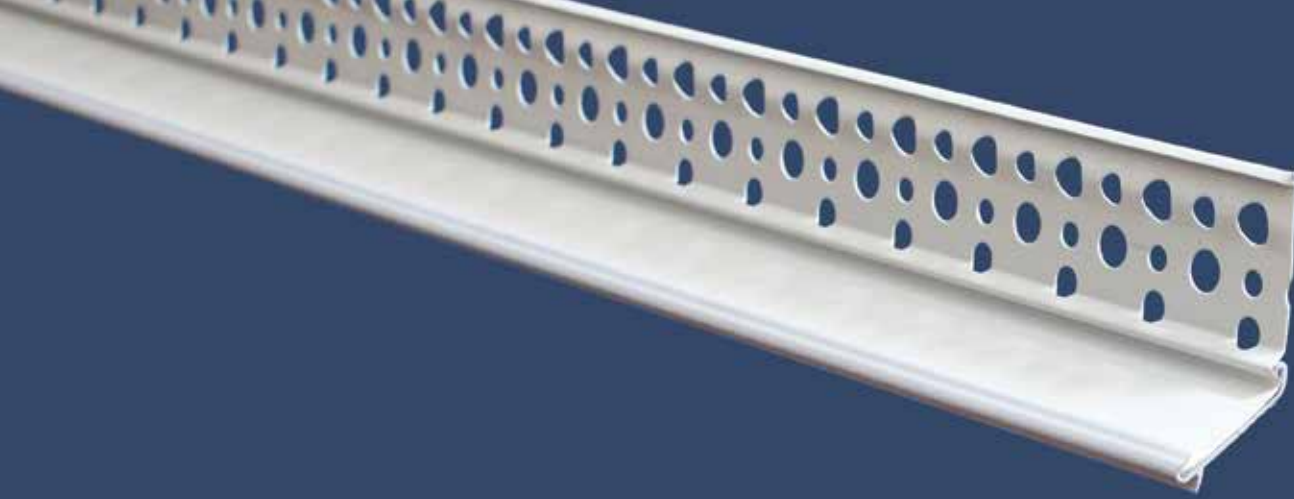
9011/2154



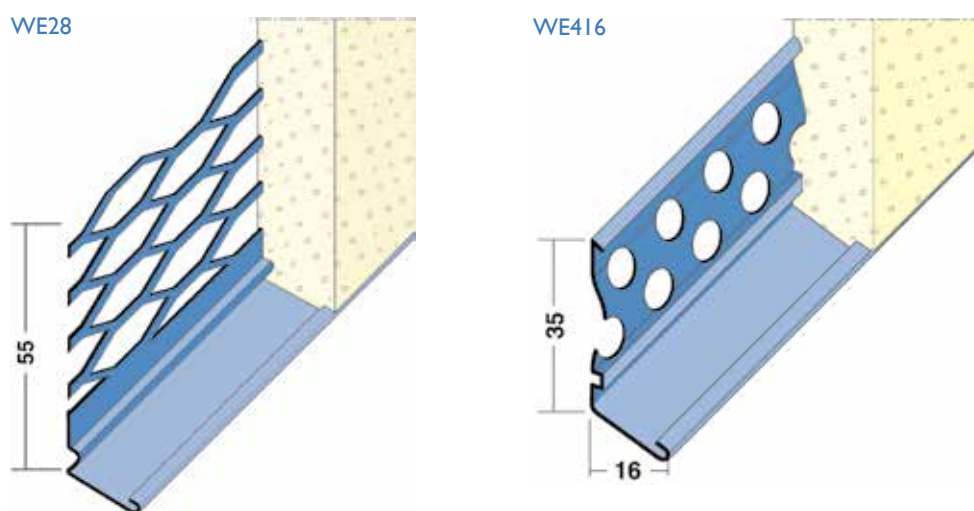
3794/37941/37942



| Render depth mm | Aluminium Ref. number | Stainless Steel Ref. number | PVC Ref. number | Length m | Quantity per box |
|-----------------|-----------------------|-----------------------------|-----------------|----------|------------------|
| 6 | 9011 | 2154 | | 2.5 | 20 |
| 6 | | | 3794 | 2.5 | 10 |
| 10 | | | 37941 | 2.5 | 10 |
| 14 | | | 37942 | 2.5 | 10 |

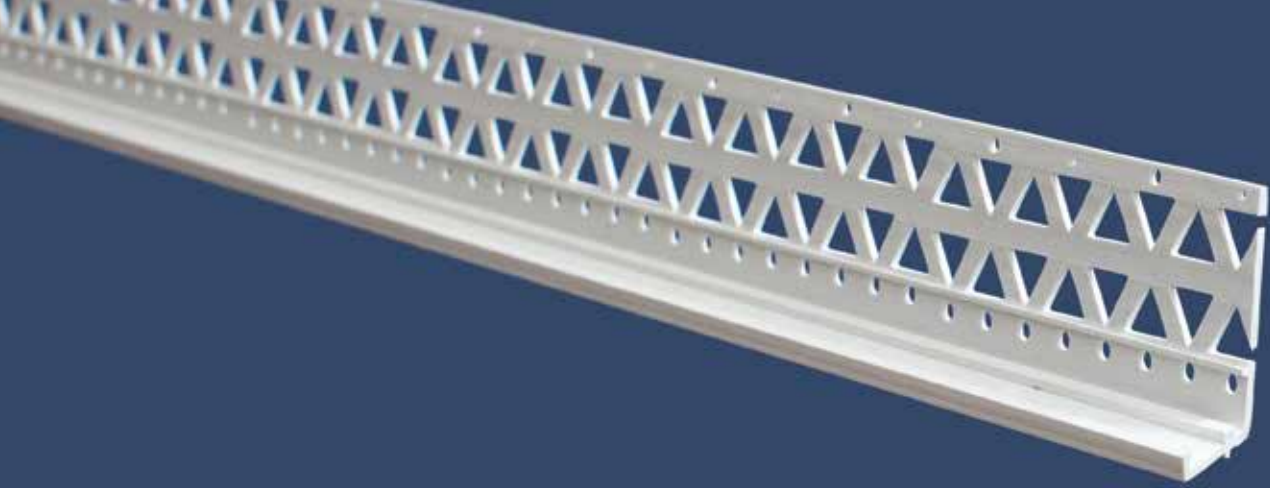


Render Bellcast / Drip Beads

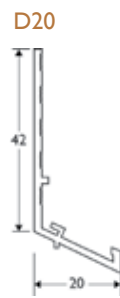
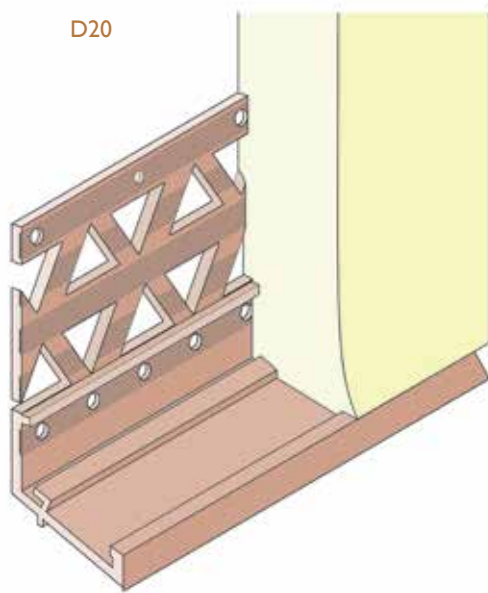


Wemico bellcast beads made from powder coated Galvanised Steel or Stainless Steel, in a choice of mesh or perforated wing, with optional PVC nosing which will provide additional protection against abrasion and corrosion.

| Render depth mm | Polyester Powder Coated Galvanised Steel | Polyester Powder Coated Galv. Steel with PVC Nosing | Stainless Steel Ref. number | Stainless Steel with PVC Nosing | Length m | Wing type |
|-----------------|--|---|-----------------------------|---------------------------------|----------|-----------------|
| 16 | WE28 | WE28N | WE28SS | WE28NSS | 3.0 | Mesh wing |
| 16-20 | WE29 | WE29N | WE29SS | WE29NSS | 3.0 | Mesh wing |
| 10-13 | WE61 | WE61N | WE61SS | WE61NSS | 3.0 | Perforated wing |
| 16-20 | WE62 | WE62N | WE62SS | WE62NSS | 3.0 | Perforated wing |
| 10 | WE410 | WE410N | WE410SS | WE410NSS | 3.0 | Perforated wing |
| 13 | WE413 | WE413N | WE413SS | WE413NSS | 3.0 | Perforated wing |
| 16 | WE416 | WE416N | WE416SS | WE416NSS | 3.0 | Perforated wing |



PVC Bellcast Beads



| Render depth mm | PVC Ref. number | Length m | Quantity per box |
|-----------------|-----------------|----------|------------------|
| 6-12 | D10 | 2.5 | 25 |
| 10-17 | D15 | 2.5 | 25 |
| 13-22 | D20 | 2.5 | 25 |

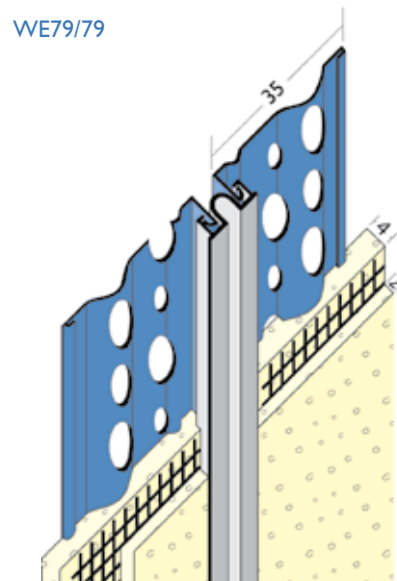
COLOURS

All profiles are available in white and ivory.
15 & 20mm beads are also available in this range of colours.





Movement Beads

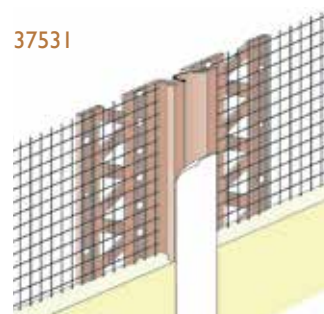
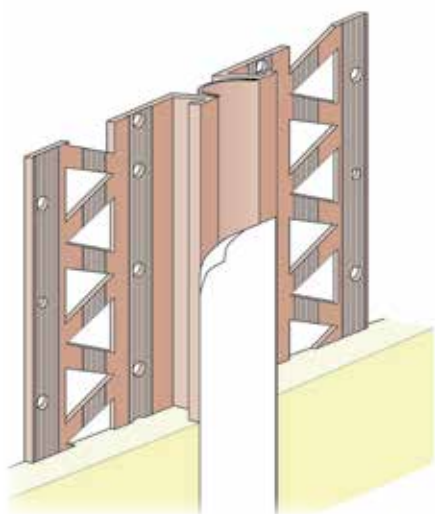


Designed to handle thermal movements, Wemico movement beads are made from powder coated Galvanised Steel or Stainless Steel, in a choice of mesh or perforated wing, with optional PVC nosing which will provide additional protection against abrasion and corrosion.

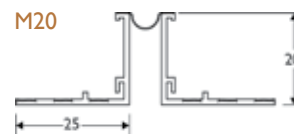
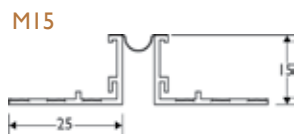
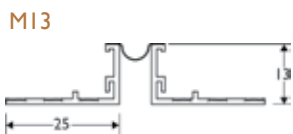
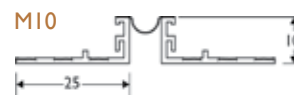
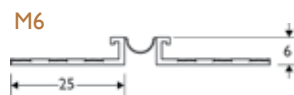
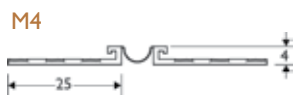
| Render depth mm | Polyester Powder Coated Galv. Steel Ref. number | Length m | Stainless Steel Ref. number | Length m | Mesh type |
|-----------------|---|----------|-----------------------------|----------|-----------------|
| 6 | WE79/79 | 3.0 | WE79/79SS | 3.0 | Perforated wing |
| 10 | WE80/80 | 3.0 | WE80/80SS | 3.0 | Perforated wing |
| 13 | WE81/81 | 3.0 | WE81/81SS | 3.0 | Perforated wing |
| 16 | WE806/806 | 3.0 | WE806/806SS | 3.0 | Perforated wing |
| 20 | WE82/82 | 3.0 | WE82/82SS | 3.0 | Perforated wing |
| 10 | WE10/10 | 3.0 | WE10/10SS | 3.0 | Mesh wing |
| 13 | WE13/13 | 3.0 | WE13/13SS | 3.0 | Mesh wing |
| 16 | WE16/16 | 3.0 | WE16/16SS | 3.0 | Mesh wing |
| 20 | WE22/22 | 3.0 | WE22/22SS | 3.0 | Mesh wing |



PVC Movement Beads



6mm available with Mesh - white only



| Render depth mm | PVC Ref. number | Length m | Quantity per box |
|-----------------|-----------------|----------|------------------|
| 4-6 | M4 | 2.5 | 25 |
| 6-8 | M6 | 2.5 | 25 |
| 10-12 | M10 | 2.5 | 25 |
| 13-15 | M13 | 2.5 | 25 |
| 15-17 | M15 | 2.5 | 25 |
| 20-22 | M20 | 2.5 | 25 |
| 6 | 37531 | 2.75 | 10 |

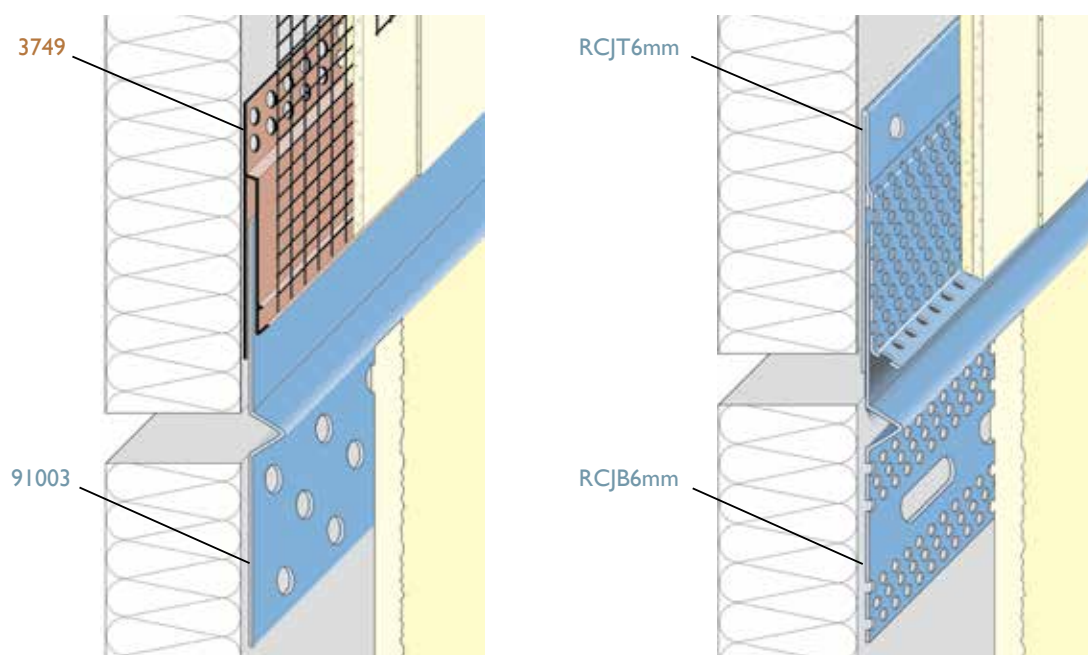
COLOURS

All profiles are available in white and ivory.
10 & 15mm beads are also available in this range of colours.





Render only Compression Joint



Wemico render only compression joint for thin coat render. Ideally suited to timber framed buildings.

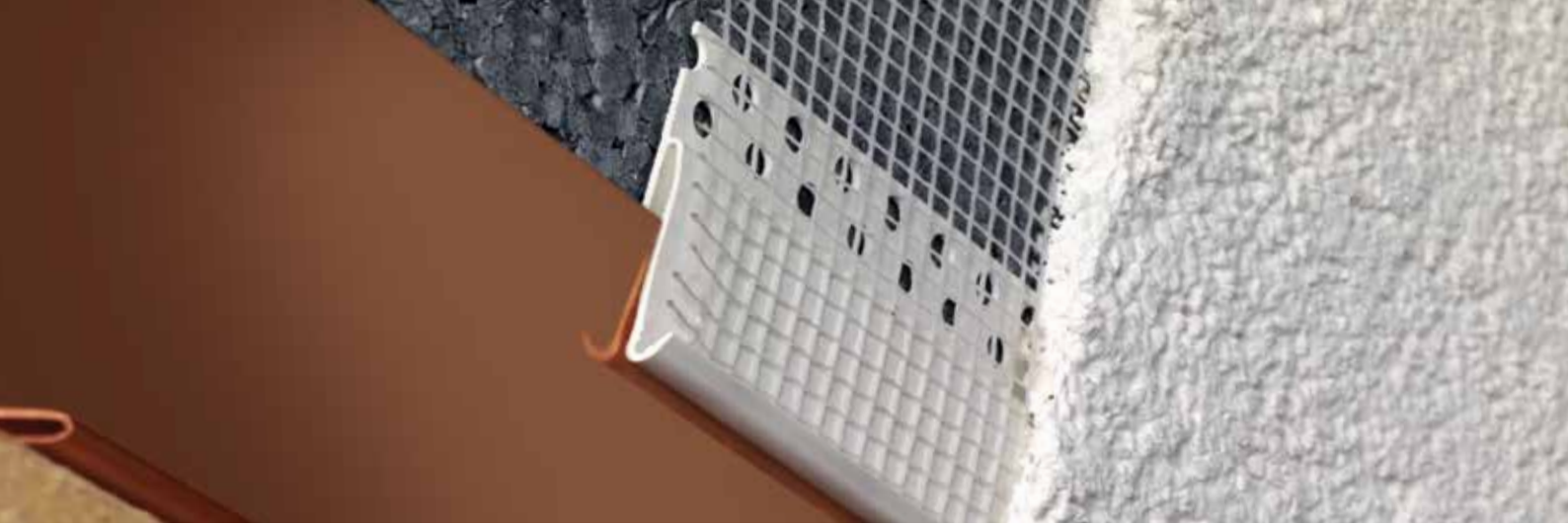
The aluminium base section is supplied pre-coated white, but can be powder coated to any colour if required.

Corner and Joint products are available on request.

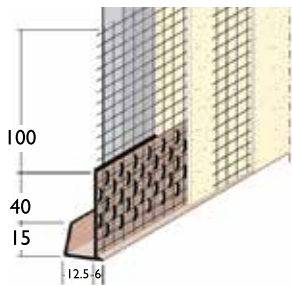
| | Render depth mm | PVC with Mesh Ref. number | Powder Coated Aluminium Ref. number | Length m | Quantity per box |
|--------------|-----------------|---------------------------|-------------------------------------|----------|------------------|
| Top Section | 8 - 10 | 3749 | | 2.5 | 10 |
| Base Section | 8 - 10 | | 91003 | 2.5 | 10 |

| | Render depth mm | Powder Coated Aluminium Ref. number | Length m | Quantity per box |
|--------------|-----------------|-------------------------------------|----------|------------------|
| Top Section | 6 - 9 | RCJT6mm | 2.5 | 10 |
| Base Section | 6 - 9 | RCJB6mm | 2.5 | 10 |

Other sizes made to order.

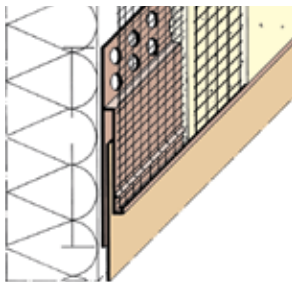


Facade & Edge Profiles

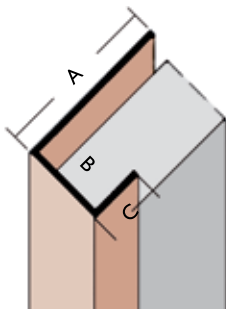


To fit 12.5mm plasterboard

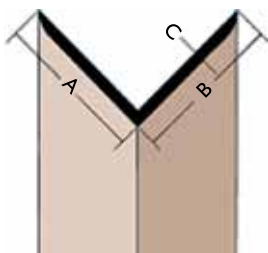
| PVC Ref. number | Length m | No. per bundle |
|-----------------|----------|----------------|
| 37517 | 2.5 | 25 |



| PVC Ref. number | Length m | No. per bundle |
|-----------------|----------|----------------|
| 3749 | 2.5 | 20 |



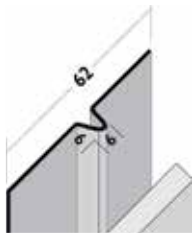
| Dim A | Dim B | Dim C | Colour | PVC Ref. number | Mill finished Aluminium Ref. number | Length m | No. per bundle |
|-------|-------|-------|-------------------|-----------------|-------------------------------------|----------|----------------|
| 42 | 13 | 15 | Black or white | 3563 | | 2.5 | 10 |
| 42 | 20 | 15 | Black or white | 3502 | | 2.5 | 10 |
| 42 | 27 | 15 | Black or white | 3527 | | 2.5 | 10 |
| 40 | 13 | 13 | Mill finish alum. | | 9407 | 2.5 | 10 |
| 40 | 16 | 15 | Mill finish alum. | | 9408 | 2.5 | 10 |
| 40 | 20 | 15 | Mill finish alum. | | 9409 | 2.5 | 10 |
| 20 | 9.5 | 10 | Black or white | 3738 | | 2.5 | 50 |
| 20 | 12.5 | 10 | Black or white | 3741 | | 2.5 | 50 |
| 20 | 15 | 10 | Black or white | 3747 | | 2.5 | 50 |



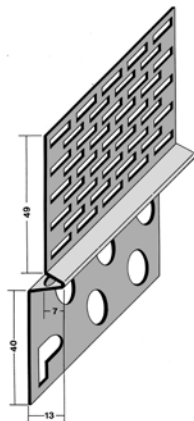
| Dim A | Dim B | Dim C | Colour | PVC Ref. number | Length m | No. per bundle |
|-------|-------|-------|----------------|-----------------|----------|----------------|
| 15 | 20 | 1.5 | Black or white | 3578 | 2.5 | 20 |
| 25 | 25 | 2.0 | Black or white | 3520 | 2.5 | 20 |
| 30 | 30 | 2.5 | Black or white | 3524 | 2.5 | 20 |
| 35 | 35 | 2.5 | Black or white | 3519 | 2.5 | 20 |
| 35 | 35 | 1.5 | Black or white | 3528 | 2.5 | 20 |
| 30 | 60 | 2.0 | Black or white | 3525 | 2.5 | 10 |
| 30 | 90 | 2.5 | Black or white | 3518 | 2.5 | 10 |
| 65 | 65 | 1.5 | Black or white | 3540 | 2.5 | 10 |



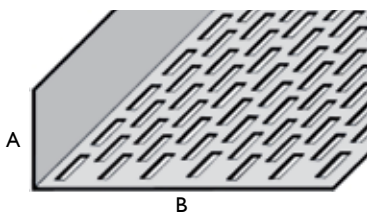
Ventilation Profiles



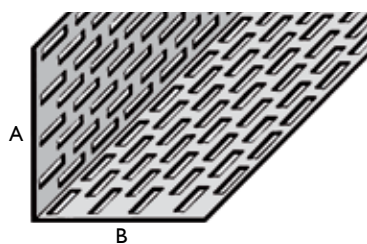
| Mill finished Aluminium Ref. number | Black Coated Aluminium Ref. number | Length m | No. per bundle |
|--|---------------------------------------|-------------|-------------------|
| 9053 | 9042 | 2.5 | 20 |



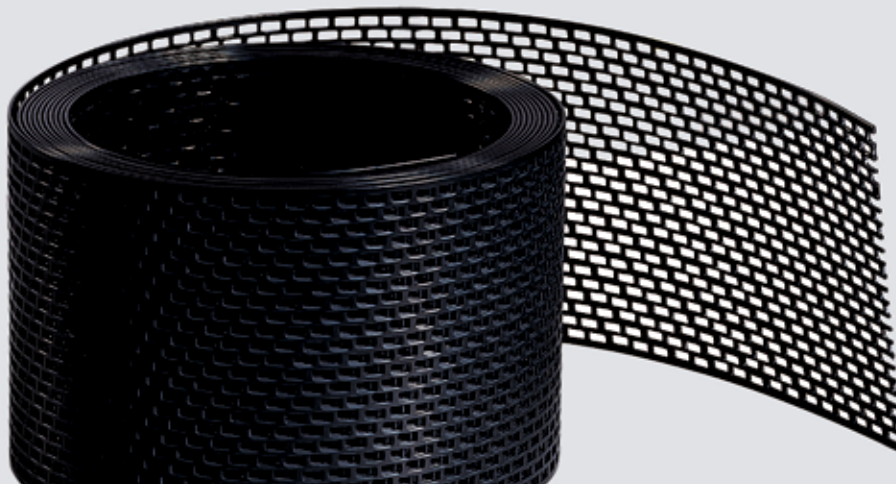
| Render depth mm | Mill finished Aluminium Ref. number | Length m | No. per bundle |
|--------------------|--|-------------|-------------------|
| 13 | 9224 | 2.5 | 20 |



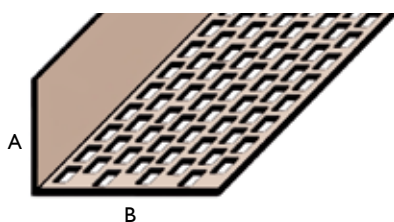
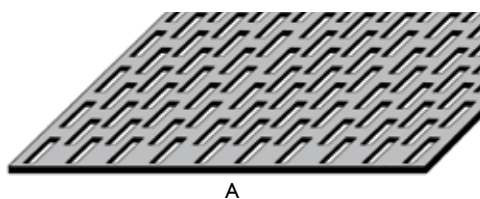
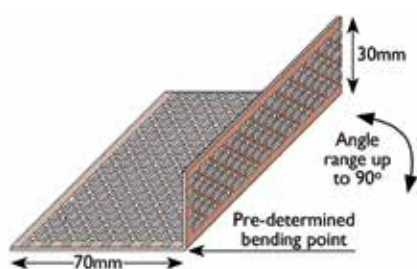
| Dim A | Dim B | Mill finished Aluminium Ref. number | Black coated Aluminium Ref. number | Length m | No. per bundle |
|-------|-------|--|---------------------------------------|-------------|-------------------|
| 30 | 60 | 9330 | 9331 | 2.5 | 10 |
| 30 | 70 | 9072 | 9044 | 2.5 | 20 |
| 30 | 90 | 9306 | | 2.5 | 20 |
| 30 | 100 | 9332 | 9333 | 2.5 | 10 |
| 30 | 120 | 9334 | 9335 | 2.5 | 10 |
| 10 | 50 | 9312 | | 2.5 | 20 |
| 10 | 70 | 9313 | | 2.5 | 20 |
| 10 | 90 | 9314 | | 2.5 | 20 |



| Dim A | Dim B | Mill finished Aluminium Ref. number | Black coated Aluminium Ref. number | Length m | No. per bundle |
|-------|-------|--|---------------------------------------|-------------|-------------------|
| 30 | 30 | 9309 | | 2.5 | 20 |
| 30 | 40 | 9301 | 9300 | 2.5 | 20 |
| 30 | 50 | 9071 | 9043 | 2.5 | 20 |
| 50 | 50 | 9073 | 9046 | 2.5 | 20 |
| 50 | 70 | 9302 | 9303 | 2.5 | 20 |



Ventilation Profiles



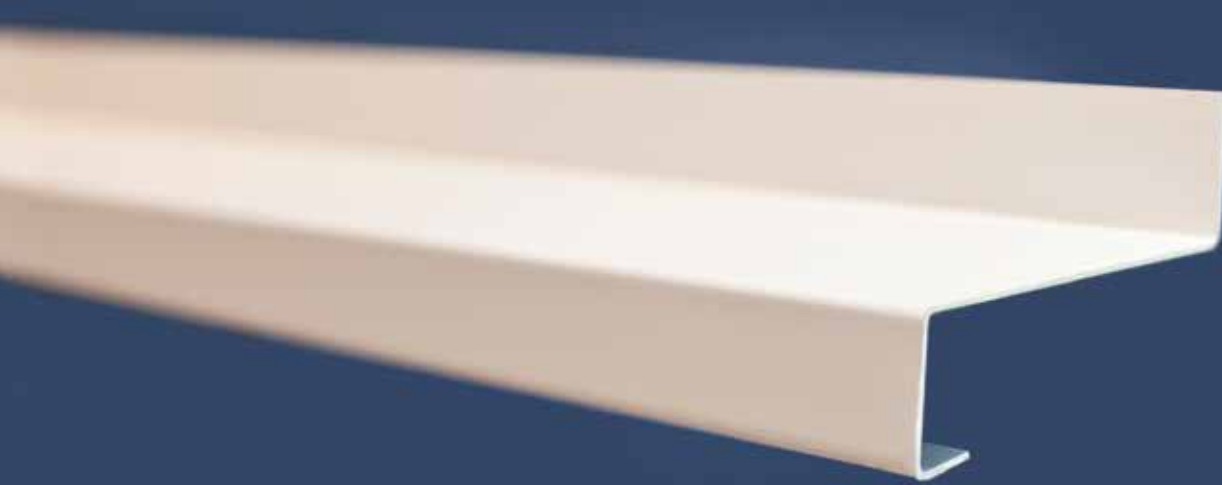
| Dim A | Dim B | Colour | PVC Ref. number | Width mm | Length m |
|-------|-------|----------------|-----------------|----------|----------|
| 70 | 30 | Black or white | 3695 | 100 | 5 |

Can be used as a 100mm ventilation strip or bent to create a 30 x 70mm angle

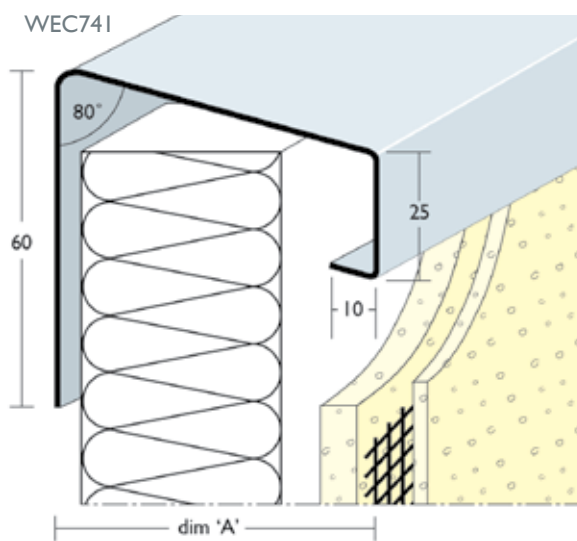
| Dim A | Mill finished Aluminium Ref. number | Black Coated Aluminium Ref. number | Length m | No. per bundle |
|-------|-------------------------------------|------------------------------------|----------|----------------|
| 50 | 9320 | 9321 | 2.5 | 20 |
| 70 | 9040 | 9041 | 2.5 | 20 |
| 80 | 9322 | 9323 | 2.5 | 20 |
| 100 | 9324 | 9325 | 2.5 | 20 |
| 120 | 9095 | 9096 | 2.5 | 20 |

| Dim A | Dim B | Colour | PVC Ref. number | Length m | No. per bundle |
|-------|-------|----------------|-----------------|----------|----------------|
| 25 | 25 | Black or white | 3614 | 2.5 | 20 |
| 30 | 30 | Black or white | 3612 | 2.5 | 20 |
| 30 | 50 | Black or white | 3610 | 2.5 | 20 |
| 30 | 60 | Black or white | 3611 | 2.5 | 10 |
| 30 | 70 | Black or white | 3613 | 2.5 | 10 |
| 30 | 90 | Black or white | 3617 | 2.5 | 10 |

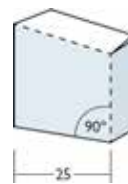
| Dim A | Colour | PVC Ref. number | Length m |
|-------|----------------|-----------------|----------|
| 50 | Black or white | 3686 | 5 |
| 80 | Black or white | 3685 | 5 |
| 100 | Black or white | 3681 | 5 |
| 150 | Black or white | 3682 | 5 |
| 180 | Black or white | 3683 | 5 |
| 50 | Black or white | 3677 | 60 |
| 80 | Black or white | 3678 | 60 |
| 100 | Black or white | 3679 | 60 |



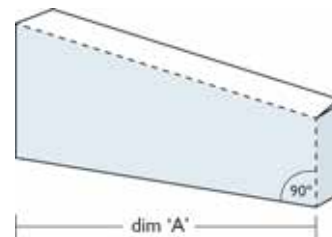
Standard Trims & Flashings



Push fit end cap detail



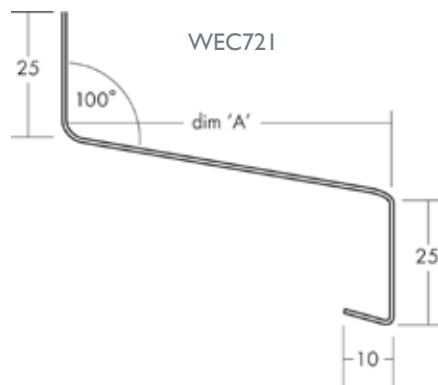
Full end cap detail



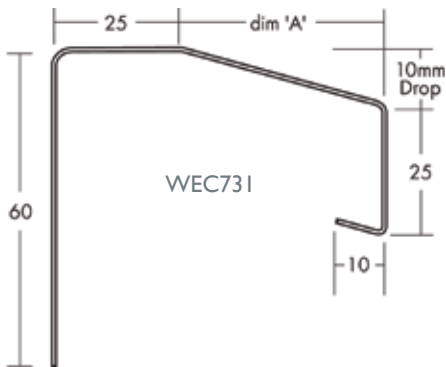
Suitable for most conditions requiring the weathering of external wall insulation systems and rendering. Aluminium white coated with peel-off low tack film to protect the section during transportation and fixing on-site.

Pre-cut lengths, push-fit or welded end caps are available on request. Joining pieces to suit any section can be supplied where continuous lengths of flashings are installed. Clips can be supplied to retain the projecting nose of the section if required.

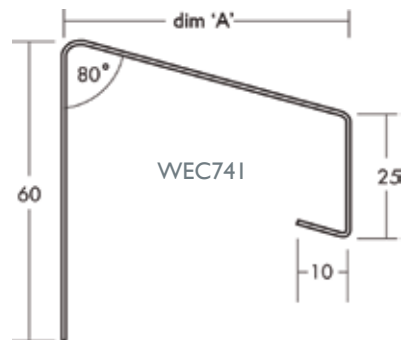
Larger sizes, increased thickness or variations on any of these profiles can be manufactured to your specification, and powder coated to any standard RAL colour.



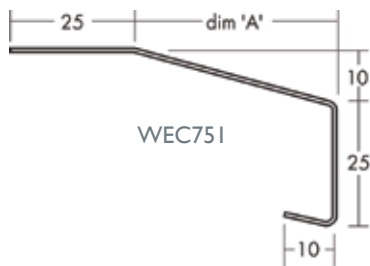
| 'A' mm | White Coated 1.2mm Aluminium | Length m |
|-----------|---------------------------------|-------------|
| 50 | WEC721/50 | 2.5 |
| 60 | WEC721/60 | 2.5 |
| 70 | WEC721/70 | 2.5 |
| 80 | WEC721/80 | 2.5 |
| 90 | WEC721/90 | 2.5 |
| 100 | WEC721/100 | 2.5 |
| 110 | WEC721/110 | 2.5 |
| 120 | WEC721/120 | 2.5 |
| 130 | WEC721/130 | 2.5 |



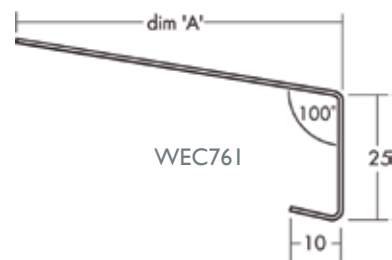
| 'A' mm | Overall width | White Coated 1.2mm Aluminium | Length m |
|--------|---------------|------------------------------|----------|
| 25 | 50 | WEC731/25 | 2.5 |
| 35 | 60 | WEC731/35 | 2.5 |
| 45 | 70 | WEC731/45 | 2.5 |
| 55 | 80 | WEC731/55 | 2.5 |
| 65 | 90 | WEC731/65 | 2.5 |
| 75 | 100 | WEC731/75 | 2.5 |
| 85 | 110 | WEC731/85 | 2.5 |
| 95 | 120 | WEC731/95 | 2.5 |
| 105 | 130 | WEC731/105 | 2.5 |



| 'A' mm | White Coated 1.2mm Aluminium | Length m |
|--------|------------------------------|----------|
| 50 | WEC741/50 | 2.5 |
| 60 | WEC741/60 | 2.5 |
| 70 | WEC741/70 | 2.5 |
| 80 | WEC741/80 | 2.5 |
| 90 | WEC741/90 | 2.5 |
| 100 | WEC741/100 | 2.5 |
| 110 | WEC741/110 | 2.5 |
| 120 | WEC741/120 | 2.5 |
| 130 | WEC741/130 | 2.5 |



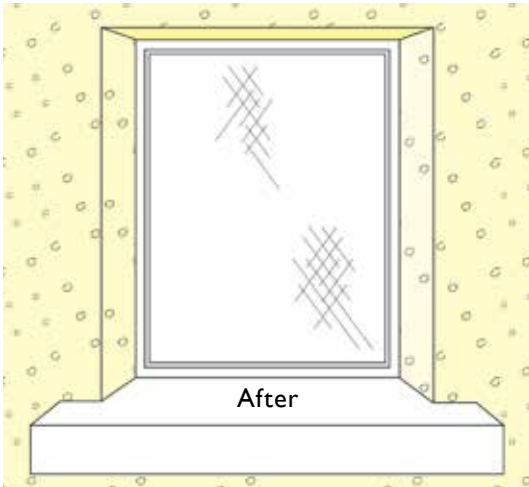
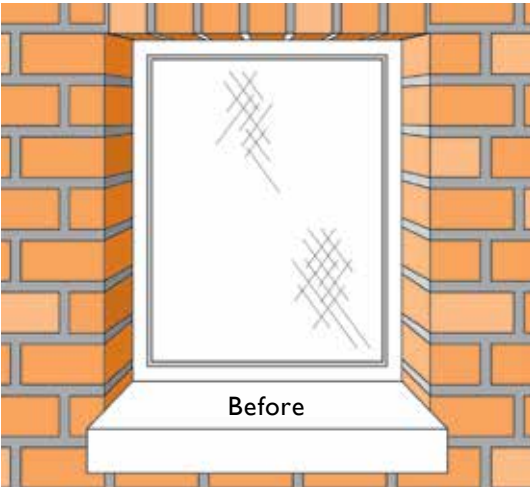
| 'A' mm | Overall width | White Coated 1.2mm Aluminium | Length m |
|--------|---------------|------------------------------|----------|
| 25 | 50 | WEC751/25 | 2.5 |
| 35 | 60 | WEC751/35 | 2.5 |
| 45 | 70 | WEC751/45 | 2.5 |
| 55 | 80 | WEC751/55 | 2.5 |
| 65 | 90 | WEC751/65 | 2.5 |
| 75 | 100 | WEC751/75 | 2.5 |
| 85 | 110 | WEC751/85 | 2.5 |
| 95 | 120 | WEC751/95 | 2.5 |
| 105 | 130 | WEC751/105 | 2.5 |
| 115 | 140 | WEC751/115 | 2.5 |
| 125 | 150 | WEC751/125 | 2.5 |



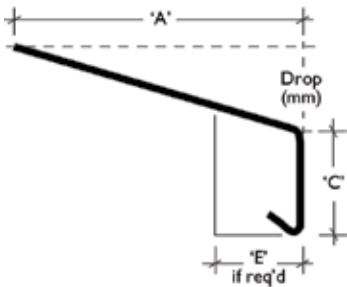
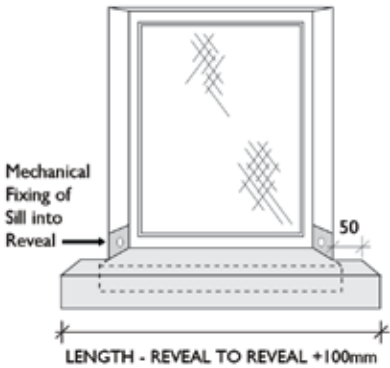
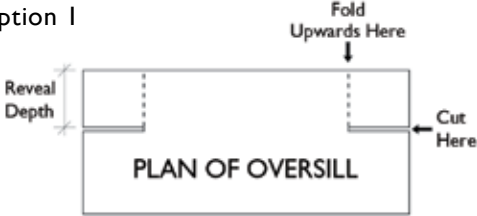
| 'A' mm | White Coated 1.2mm Aluminium | Length m |
|--------|------------------------------|----------|
| 30 | WEC761/30 | 2.5 |
| 40 | WEC761/40 | 2.5 |
| 50 | WEC761/50 | 2.5 |
| 60 | WEC761/60 | 2.5 |
| 70 | WEC761/70 | 2.5 |
| 80 | WEC761/80 | 2.5 |
| 90 | WEC761/90 | 2.5 |
| 100 | WEC761/100 | 2.5 |
| 110 | WEC761/110 | 2.5 |
| 120 | WEC761/120 | 2.5 |
| 130 | WEC761/130 | 2.5 |

Custom made Oversill

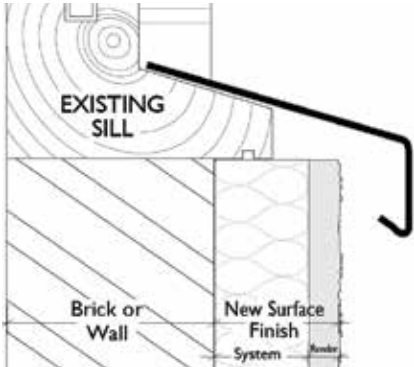
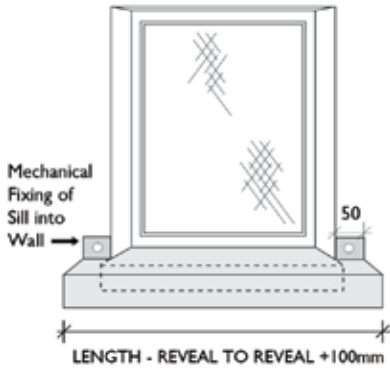
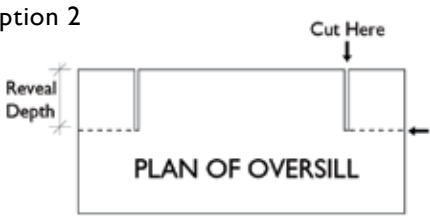
Example based on WE76 type sill



Option 1



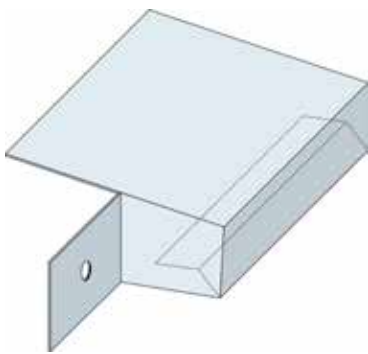
Option 2



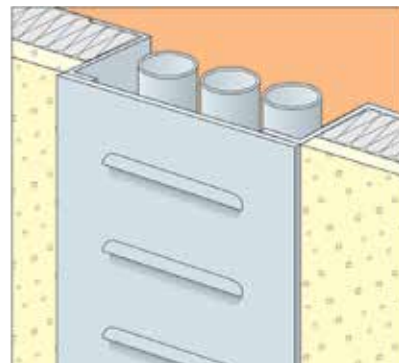
Relevant dimensions (A, C & E) are taken on site ensuring dimension 'A' is sufficient to 'oversail' new surface finish by the required amount. Length is measured reveal to reveal +100mm. Sills to be fixed prior to application of new surface finish, to hide fixing lugs.



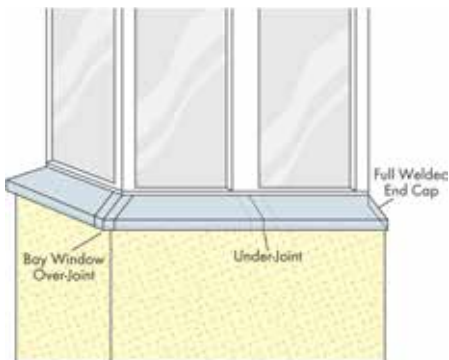
Custom Fabrication



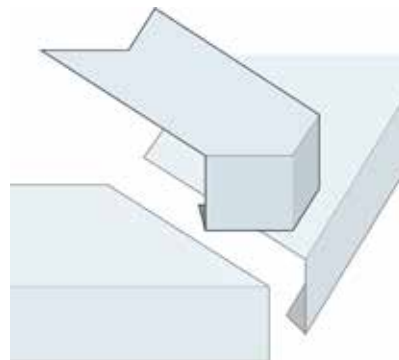
Custom made Sill with Welded Fixing Lug



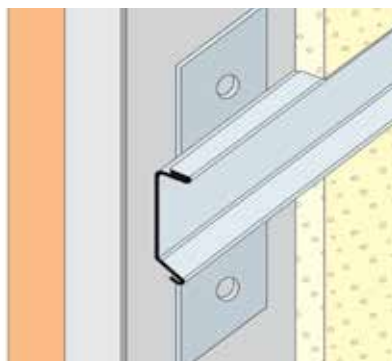
Louvred Panels/Access Panels



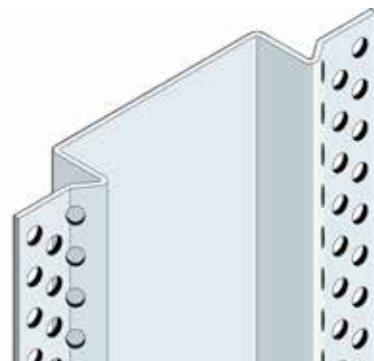
Custom made Sills



Mitred Over-Joint



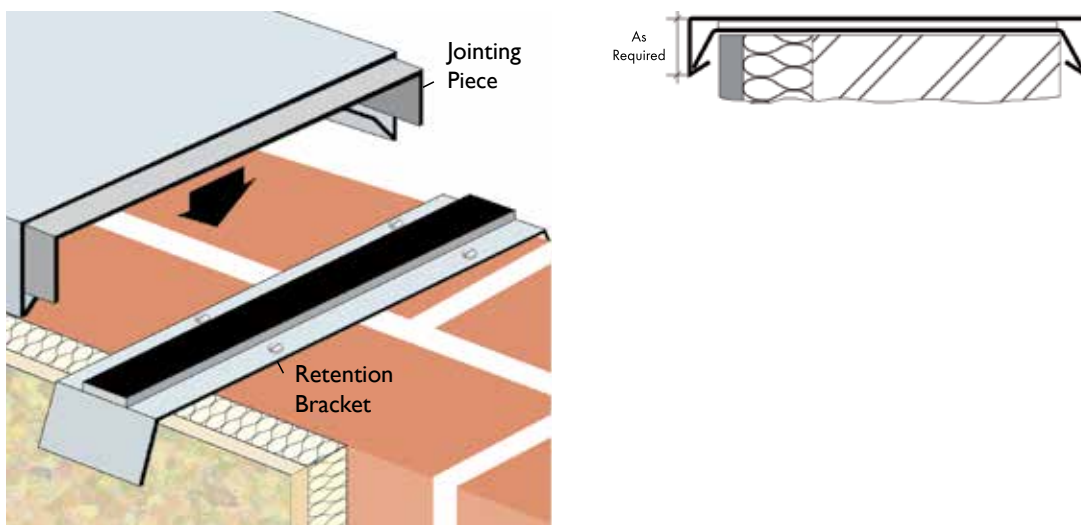
Horizontal Feature Channels



Vertical Feature Channels



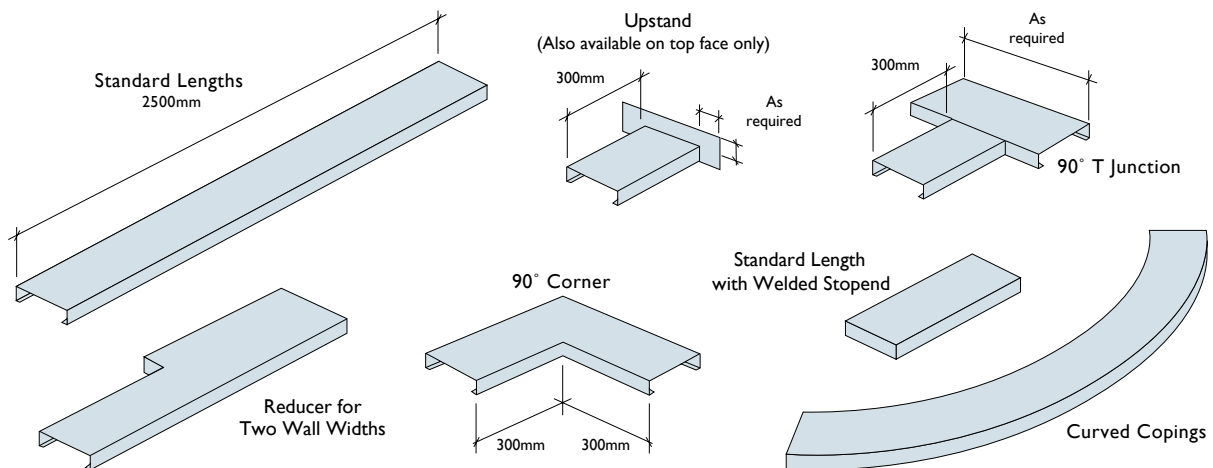
Aluminium Copings



Wemico Aluminium copings are an economical, weatherproof and easily installed finish to parapet and balcony walls with no visible fixings after installation. Retention brackets and joining pieces will ensure true alignment.

Copings are manufactured in Aluminium and can be powder coated to any standard RAL colour. Wemico copings are supplied with peel-off low tack film to protect the section during transportation and fixing.

To fit Wemico copings, secure the retention bracket to the top of the wall at (approx) 600mm centres. Place coping over the bracket and push down firmly to clip into position. A 2-3mm expansion gap should be left between coping sections. Please contact the sales office on 01562 820123 should a site measure be required.



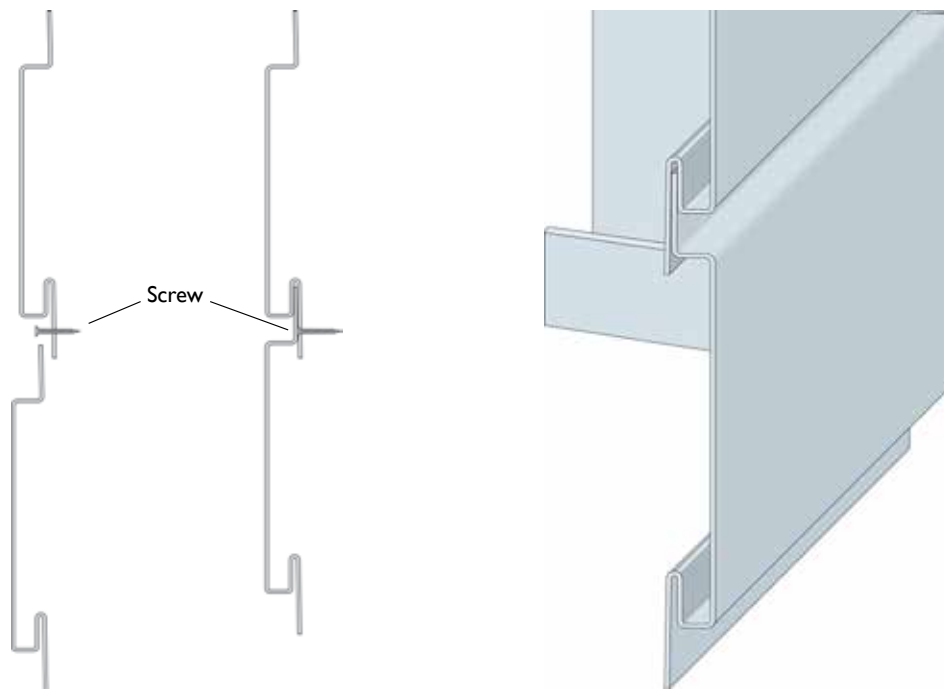
WEMICO

T: 01562 820123



Wall and Ceiling Facade Panels

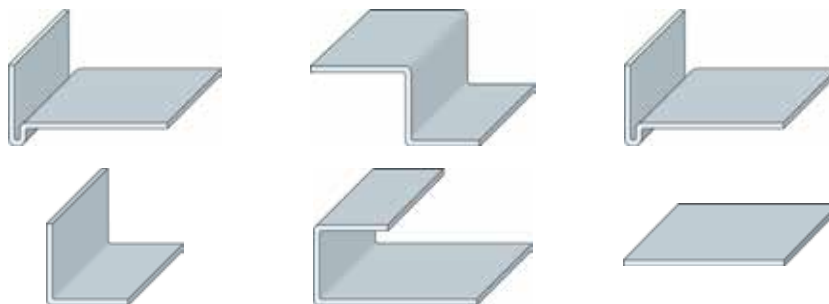
Wemico custom made rain screen cladding panels, made to order. Please contact us for details.

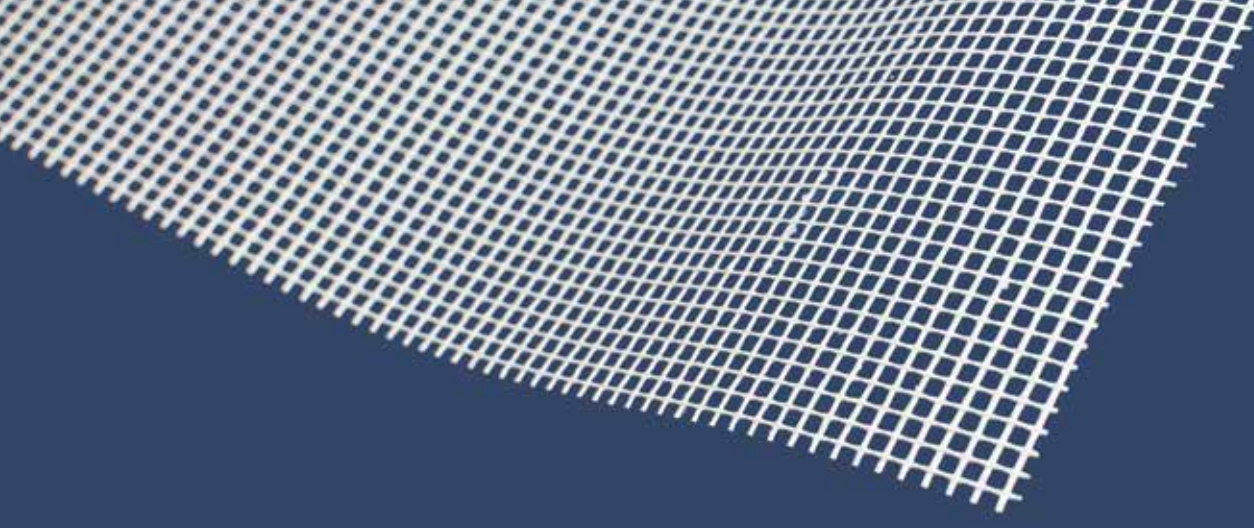


Can't find what you're looking for?

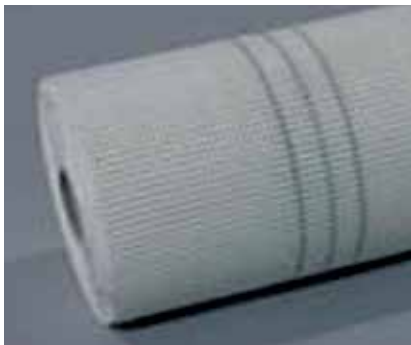
If you can't find the detail that you are looking for, please contact us, as we are able to manufacture a variety of custom profiles.

Any trims, sills, flashings or copings can be fabricated to site requirements from 1.2mm, 1.5mm or 2mm aluminium and powder coated to a standard RAL colour of your choice.





Alkali Resistant Fibre Mesh



| | Mesh aperture mm | Weight | Roll size m |
|-----------------------------|---------------------|---------------------|----------------|
| Alkali resistant fibre mesh | 4 x 4 | 160g/m ² | 50 x 1 |
| Alkali resistant fibre mesh | 6 x 6 | 217g/m ² | 50 x 1 |

Insect Mesh



| | Mesh count per inch | Weight | Wire diameter mm | Roll size m |
|------------------------------|------------------------|---------------------|---------------------|----------------|
| Black fibreglass insect mesh | 18 x 16 | 120g/m ² | | 30 x 1.2 |
| Aluminium insect mesh | 18 x 16 | | 0.28 | 30 x 1.2 |
| Stainless insect mesh | 18 x 14 | | 0.22 | 30 x 1.2 |

WEMICO Product index

| Product Ref No. | Page | Product Ref No. | Page | Product Ref No. | Page | Product Ref No. | Page | Product Ref No. | Page | Product Ref No. | Page | Product Ref No. | Page |
|-----------------|------|-----------------|------|-----------------|------|-----------------|------|-----------------|------|-----------------|------|-----------------|------|
| 2031 | 18 | 37401 | 5 | 90608 | 4 | M20 | 27 | WE413 | 24 | WE806/806SS26 | | WE89N | 6 |
| 2112 | 4 | 37402 | 5 | 90609 | 4 | M4 | 27 | WE413N | 24 | WE806N | 20 | WE89NSS | 6 |
| 2113 | 4 | 37500 | 11 | 90810 | 4 | M6 | 27 | WE413NSS | 24 | WE806NSS | 20 | WE89SS | 6 |
| 2114 | 4 | 37501 | 11 | 90811 | 4 | Mesh | 38 | WE413SS | 24 | WE806SS | 20 | WEC721/100 | 32 |
| 2130 | 5 | 37502 | 11 | 90812 | 4 | P4 | 21 | WE416 | 24 | WE80N | 20 | WEC721/110 | 32 |
| 2132 | 5 | 37510 | 10 | 90813 | 4 | P6 | 21 | WE416N | 24 | WE80NSS | 20 | WEC721/120 | 32 |
| 2134 | 5 | 37510A | 10 | 90814 | 4 | PRE91109 | 4 | WE416NSS | 24 | WE80SS | 20 | WEC721/130 | 32 |
| 2141 | 14 | 37515 | 11 | 90815 | 4 | PRE91110 | 4 | WE416SS | 24 | WE81 | 20 | WEC721/50 | 32 |
| 2142 | 14 | 37517 | 29 | 90816 | 4 | PRE91111 | 4 | WE61 | 24 | WE81/81 | 26 | WEC721/60 | 32 |
| 2143 | 4 | 37522 | 10 | 90818 | 4 | PRE91112 | 4 | WE610 | 9 | WE81/81SS | 26 | WEC721/70 | 32 |
| 2144 | 4 | 37531 | 27 | 90820 | 4 | PRE91113 | 4 | WE610N | 9 | WE810 | 6 | WEC721/80 | 32 |
| 2145 | 4 | 37806 | 22 | 91003 | 28 | PRE91114 | 4 | WE610NSS | 9 | WE810/810 | 15 | WEC721/90 | 32 |
| 2146 | 4 | 37909 | 22 | 91009 | 4 | PRE91115 | 4 | WE610SS | 9 | WE810/810SS | 15 | WEC721/105 | 33 |
| 2147 | 4 | 37914 | 21 | 91010 | 4 | PRE91116 | 4 | WE611 | 9 | WE810N | 6 | WEC731/25 | 33 |
| 2148 | 4 | 37941 | 23 | 91011 | 4 | PRE91117 | 4 | WE611N | 9 | WE810NSS | 6 | WEC731/35 | 33 |
| 2149 | 4 | 37942 | 23 | 91012 | 4 | PRE91118 | 4 | WE611NSS | 9 | WE810SS | 6 | WEC731/45 | 33 |
| 2150 | 4 | 38909 | 22 | 91013 | 4 | PRE91119 | 4 | WE611SS | 9 | WE811 | 6 | WEC731/55 | 33 |
| 2151 | 14 | 5007 | 16 | 91014 | 4 | PRE91120 | 4 | WE612 | 9 | WE811N | 6 | WEC731/65 | 33 |
| 2152 | 14 | 5112 | 16 | 91015 | 4 | R10 | 21 | WE612N | 9 | WE811NSS | 6 | WEC731/75 | 33 |
| 2154 | 23 | 9011 | 23 | 91016 | 4 | R13 | 21 | WE612NSS | 9 | WE811SS | 6 | WEC731/85 | 33 |
| 2274 | 17 | 9040 | 31 | 91017 | 4 | R15 | 21 | WE612SS | 9 | WE812 | 6 | WEC731/95 | 33 |
| 3035 | 15 | 9041 | 31 | 91018 | 4 | R20 | 21 | WE61N | 24 | WE812N | 6 | WEC741/100 | 33 |
| 3036 | 15 | 9042 | 30 | 91019 | 4 | R4 | 21 | WE61NSS | 24 | WE812NSS | 6 | WEC741/110 | 33 |
| 3502 | 29 | 9043 | 30 | 91020 | 4 | R6 | 21 | WE61SS | 24 | WE812SS | 6 | WEC741/120 | 33 |
| 3518 | 29 | 9044 | 30 | 93304 | 6 | RCJB6mm | 28 | WE62 | 24 | WE81N | 20 | WEC741/130 | 33 |
| 3519 | 29 | 9046 | 30 | 93305 | 6 | RCJT6mm | 28 | WE625 | 9 | WE81NSS | 20 | WEC741/50 | 33 |
| 3520 | 29 | 9053 | 30 | 93306 | 6 | WE10 | 20 | WE625N | 9 | WE81SS | 20 | WEC741/60 | 33 |
| 3524 | 29 | 9071 | 30 | 93307 | 6 | WE10/10 | 26 | WE625NSS | 9 | WE82 | 20 | WEC741/70 | 33 |
| 3525 | 29 | 9072 | 30 | 93308 | 6 | WE10/10SS | 26 | WE625SS | 9 | WE82/82 | 26 | WEC741/80 | 33 |
| 3527 | 29 | 9073 | 30 | 93309 | 6 | WE10N | 20 | WE62N | 24 | WE82/82SS | 26 | WEC741/90 | 33 |
| 3528 | 29 | 9075 | 18 | 93310 | 6 | WE10NSS | 20 | WE62NSS | 24 | WE82N | 20 | WEC751/105 | 33 |
| 3540 | 29 | 9095 | 31 | 93311 | 6 | WE10SS | 20 | WE62SS | 24 | WE82NSS | 20 | WEC751/115 | 33 |
| 3563 | 29 | 9096 | 31 | 93312 | 6 | WE13 | 20 | WE63 | 9 | WE82SS | 20 | WEC751/125 | 33 |
| 3578 | 29 | 9115 | 13 | 95503 | 7 | WE13/13 | 26 | WE63N | 9 | WE83 | 6 | WEC751/25 | 33 |
| 3610 | 31 | 9116 | 13 | 95504 | 7 | WE13/13SS | 26 | WE63NSS | 9 | WE83N | 6 | WEC751/35 | 33 |
| 3611 | 31 | 9121 | 5 | 95505 | 7 | WE13N | 20 | WE63SS | 9 | WE83NSS | 6 | WEC751/45 | 33 |
| 3612 | 31 | 9122 | 5 | 95506 | 7 | WE13NSS | 20 | WE64 | 9 | WE83SS | 6 | WEC751/55 | 33 |
| 3613 | 31 | 9124 | 5 | 95507 | 7 | WE13SS | 20 | WE64N | 9 | WE84 | 6 | WEC751/65 | 33 |
| 3614 | 31 | 9181 | 14 | 95508 | 7 | WE16 | 20 | WE64NSS | 9 | WE84/84 | 15 | WEC751/75 | 33 |
| 3617 | 31 | 9182 | 14 | 95509 | 7 | WE16/16 | 26 | WE64SS | 9 | WE84/84SS | 15 | WEC751/85 | 33 |
| 3677 | 31 | 9224 | 30 | 95510 | 7 | WE16/16SS | 26 | WE65 | 9 | WE84N | 6 | WEC751/95 | 33 |
| 3678 | 31 | 9300 | 30 | 95511 | 7 | WE16N | 20 | WE65N | 9 | WE84NSS | 6 | WEC761/100 | 33 |
| 3679 | 31 | 9301 | 30 | 95512 | 7 | WE16NSS | 20 | WE65NSS | 9 | WE84SS | 6 | WEC761/110 | 33 |
| 3681 | 31 | 9302 | 30 | Brickslips | 12 | WE16SS | 20 | WE65SS | 9 | WE85 | 6 | WEC761/120 | 33 |
| 3682 | 31 | 9303 | 30 | C10 | 19 | WE17 | 17 | WE66 | 9 | WE85/85 | 15 | WEC761/130 | 33 |
| 3683 | 31 | 9306 | 30 | C13 | 19 | WE17N | 17 | WE66N | 9 | WE85/85SS | 15 | WEC761/30 | 33 |
| 3685 | 31 | 9309 | 30 | C15 | 19 | WE17NSS | 17 | WE66NSS | 9 | WE85N | 6 | WEC761/40 | 33 |
| 3686 | 31 | 9312 | 30 | C2 | 19 | WE17SS | 17 | WE66SS | 9 | WE85NSS | 6 | WEC761/50 | 33 |
| 3695 | 31 | 9313 | 30 | C4 | 19 | WE18 | 17 | WE67 | 9 | WE85SS | 6 | WEC761/60 | 33 |
| 3707 | 18 | 9314 | 30 | C6 | 19 | WE18N | 17 | WE67N | 9 | WE86 | 6 | WEC761/70 | 33 |
| 3712 | 22 | 9320 | 31 | C8 | 19 | WE18NSS | 17 | WE67NSS | 9 | WE86/86 | 15 | WEC761/80 | 33 |
| 3726 | 22 | 9321 | 31 | D10 | 25 | WE18SS | 17 | WE67SS | 9 | WE86/86SS | 15 | WEC761/90 | 33 |
| 3727 | 22 | 9322 | 31 | D15 | 25 | WE22 | 20 | WE68 | 9 | WE86N | 6 | | |
| 3738 | 29 | 9323 | 31 | D20 | 25 | WE22/22 | 26 | WE68N | 9 | WE86NSS | 6 | | |
| 3741 | 29 | 9324 | 31 | INT91203 | 8 | WE22/22SS | 26 | WE68NSS | 9 | WE86SS | 6 | | |
| 3747 | 29 | 9325 | 31 | INT91204 | 8 | WE22N | 20 | WE68SS | 9 | WE87 | 6 | | |
| 3749 | 28 | 9330 | 30 | INT91205 | 8 | WE22NSS | 20 | WE69 | 9 | WE87/87 | 15 | | |
| 3749 | 29 | 9331 | 30 | INT91206 | 8 | WE22SS | 20 | WE69N | 9 | WE87/87SS | 15 | | |
| 3752 | 18 | 9332 | 30 | INT91207 | 8 | WE28 | 24 | WE69NSS | 9 | WE87N | 6 | | |
| 3756 | 4 | 9333 | 30 | INT91208 | 8 | WE28N | 24 | WE69SS | 9 | WE87NSS | 6 | | |
| 3760 | 13 | 9334 | 30 | INT91209 | 8 | WE28NSS | 24 | WE78 | 17 | WE87SS | 6 | | |
| 3761 | 13 | 9335 | 30 | INT91210 | 8 | WE28SS | 24 | WE79 | 20 | WE88 | 6 | | |
| 3791 | 21 | 9407 | 29 | INT91211 | 8 | WE29 | 24 | WE79/79 | 26 | WE88/88 | 15 | | |
| 3793 | 21 | 9408 | 29 | INT91212 | 8 | WE29N | 24 | WE79/79SS | 26 | WE88/88SS | 15 | | |
| 3794 | 23 | 9409 | 29 | INT91213 | 8 | WE29NSS | 24 | WE79SS | 20 | WE88N | 6 | | |
| 3796 | 21 | 90603 | 4 | INT91214 | 8 | WE29SS | 24 | WE80 | 20 | WE88NSS | 6 | | |
| 3799 | 18 | 90604 | 4 | INT91215 | 8 | WE410 | 24 | WE80/80 | 26 | WE88SS | 6 | | |
| 37103 | 22 | 90605 | 4 | M10 | 27 | WE410N | 24 | WE80/80SS | 26 | WE89 | 6 | | |
| 37104 | 22 | 90606 | 4 | M13 | 27 | WE410NSS | 24 | WE806 | 20 | WE89/89 | 15 | | |
| 37400 | 5 | 90607 | 4 | M15 | 27 | WE410SS | 24 | WE806/806 | 26 | WE89/89SS | 15 | | |



WEMICO

WESTERN EXPANDED METAL
INDUSTRIES COMPANY LIMITED

Matthew Lane, Hoo Farm Industrial Estate
Kidderminster, Worcs. DY11 7RA

T: 01562 820123 F: 01562 822012
E: sales@wemico.co.uk

www.wemico.com

