



**Haulage Systems**



# Haulage Systems from Trainload Limited

Haulage Systems from Trainload Limited use an endless rope haulage system, driven in either direction by a winch unit, through a series of pulleys with the rope attached to either end of a Trolley (Mule) or Buffer Wagon. We can provide a complete haulage system tailored to your requirements, complete with design, manufacture, installation, commissioning and training, or simply supply the haulage equipment you require for installation by your own engineers.



## Why use a Wagon Haulage System?

### »» Reduced Costs

The cost of a wagon haulage system is only a fraction of the cost of a loco and the whole system can be used 24 hours a day, 7 days a week on a shift system, either automatically or by a single operator.

### »» Increased Accuracy

Our haulage systems are designed and built so that the accuracy and repeatability of the positioning and stopping of the wagon mover is within +/- 150mm.

### »» High Levels of Safety

Primary and secondary safety features are considered throughout our design so that in the event of breakdown or malfunction the equipment will "Fail Safe". Also systems can be interlocked with other equipment to stop any movement whilst other operations are being carried out.

### »» Tailored Solutions

Trainload Limited can design a complete haulage system tailored to your requirements including manufacture, installation, commissioning and training.

### »» Reliability

We ensure that all of the equipment we supply is reliable and Trainload Limited has been favoured with several commissions from companies worldwide because of this.

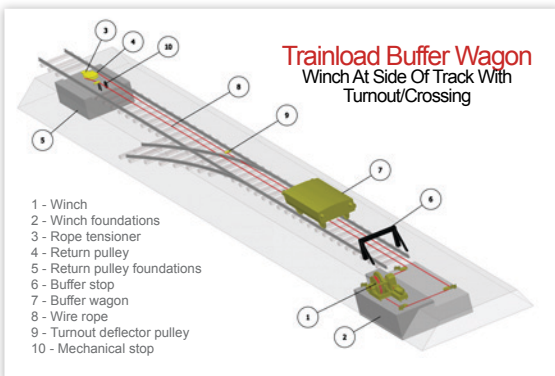
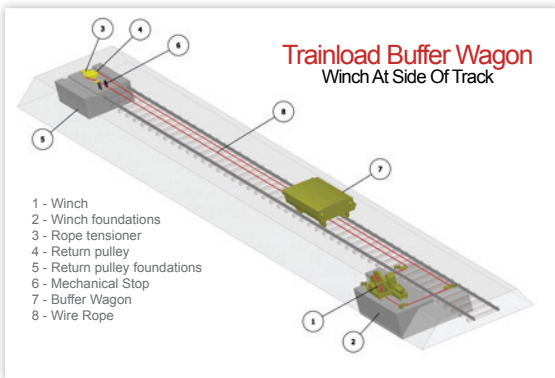
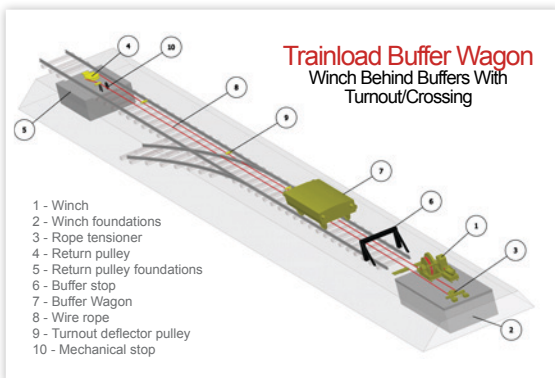
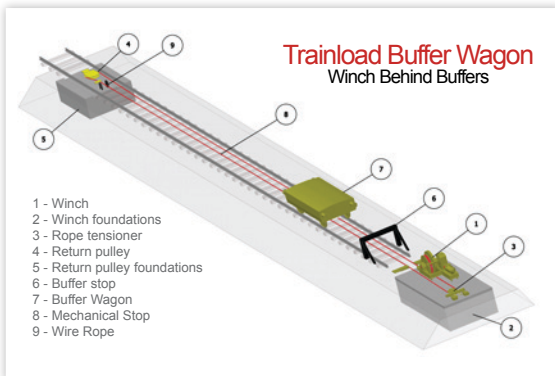
### »» After Sales Service

Trainload Limited has the facility to refurbish old winch systems, which can be undertaken by our specialist engineers. Our full after sales service and spares department includes service, spares, maintenance and maintenance contracts.

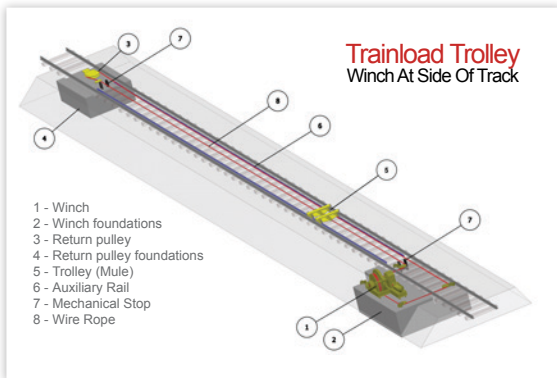
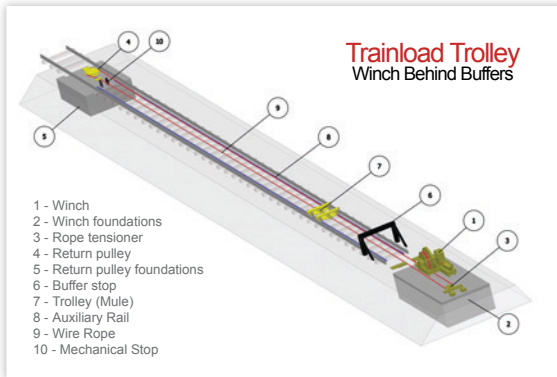
## Buffer Wagon Systems

Buffer wagon systems comprises an endless wire rope passing around pulleys with the two ends of the rope fastened by patent rope clips to the buffer wagon, which couples to the train. The rope is driven by a winch by means of three laps around a smooth surge wheel. The buffer wagon runs on the main rails and attaches to the coupling gear of the end wagon.

- » Maximum Pulling load up to 2000 t
- » Pre-tensioned ropes provide maximum accuracy and avoid excessive run-on
- » Non-slip operation on the surge wheel is ensured by the use of spring or hydraulic dampers
- » For use on a buffer ended track or track with spur siding layout
- » Fitted with either draw hook or automatic coupling to attach/detach automatically



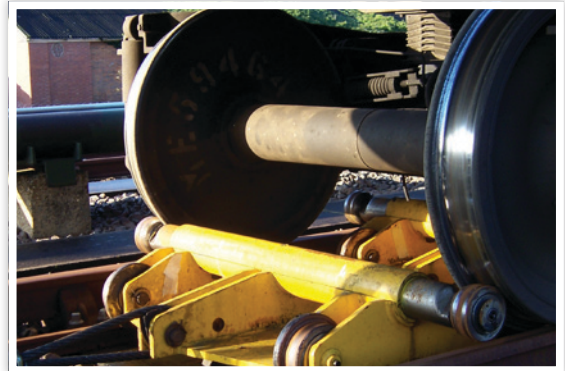
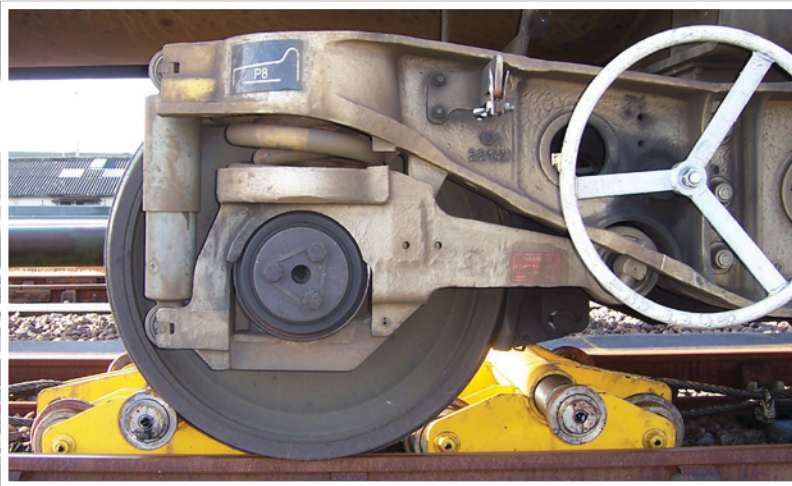




## Trolley (Mule) Systems

A trolley system or mule system is an endless rope haulage system comprising a trolley, which runs on an auxiliary rail, which is situated between the main track rails. The haulage trolley runs along this auxiliary rail and the arms of the trolley/mule can be manually or automatically opened to make contact with the tread of the wagon wheels, then the wagons can be moved into position for loading. Once loading is finished the arms can be manually or automatically retracted so the locomotive can couple up the wagons and take them away, ready for the next rake of wagons.

- » Maximum Pulling load up to 1200 t
- » Trolley systems for loading/unloading on either side of wagons or for loading individually
- » Trolley systems cannot be used where there are turnouts
- » Allow locomotives to pass over the trolley system with a lowered ambush pit for parking
- » Extendable arms with contactor wheels attach to the treads of the running wheels, not the flanges



## About Trainload Limited

Established in 1963, Trainload Limited has been designing safe, economic and cost effective rail loading solutions for their clients worldwide for over 49 years.

Based in the UK, the company commissions wagon haulage (Shunting) systems for a wide range of differing industries from Oil Refineries, through to Petro Chemical Industries, Material Handling Depots, Repair Workshops, Grain terminals, Port Authorities, Refuse Collection Depots, Grain Terminals, Steel Works, Washing Facilities and Wheel Lathe Shops

throughout the world, and has an excellent track record for delivery and commissioning the precise solution to meet their clients requirements.

We have been pleased to supply some of the world leaders in the oil business and state owned companies as well as smaller organisations around the world with our rail loading and unloading systems, some of these installations which were installed over 35 years ago, are still in operation today, a testament to the quality of the design and manufacture.



## Why choose Trainload Limited?

### »» Experience

We have been established since 1963 and have vast experience in the design and installation of cost effective and efficient rail loading systems.

### »» Supply and Installation

Trainload have been pleased to supply some of the world leaders in the oil business with haulage systems and some of these which were installed over 35 years ago are still in operation today.

### »» Health & Safety

We take health and safety very seriously and ensure that all of our employees and sub-contractors follow our guidelines with regards to health, safety and the environment.

### »» Personal Service

To ensure that your solution fits your exact requirements we work with you at every stage of design, installation, training and implementation as well as giving an excellent after sales service.

### »» Maintenance

At Trainload Limited we offer a full after sales service and can offer services, spares, maintenance and maintenance contracts for your rail loading systems





International Rail Loading Specialists

Main Street, Horkstow

North Lincolnshire, DN18 6BL, England

Tel + 44 (0) 1652 618668

Fax + 44 (0) 1652 618668

Email: [enquiries@trainload.co.uk](mailto:enquiries@trainload.co.uk)

Web: [www.trainload.co.uk](http://www.trainload.co.uk)

Vat No 764 1518 28

Company Reg # 4136614