



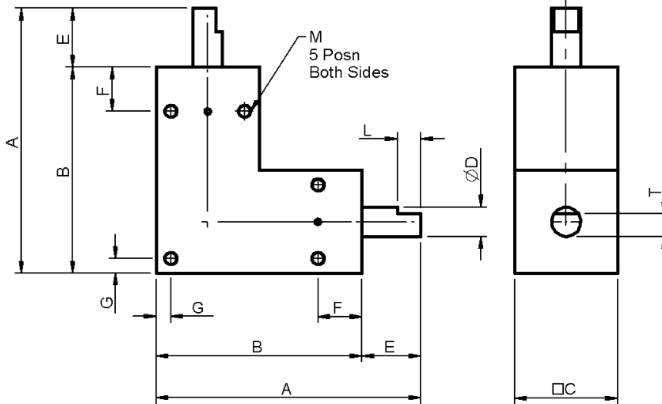
Associated Products

Motors: page 2-1
Couplings: page 8-1
Hardware: page 13-1

All dimensions in mm

Materials:

Body - Anodised aluminium
(ISO AlMg0.7Si, AlMg1SiCu)
Shaft - Stainless steel (SUS303)



Part number selection table

Part Number	Gear Ratio	C	A	B	ØD (h7)	E	F	G	Shaft End		Hole Dims		Backlash (arcmin)	Weight (g)
									T	L	M	Depth		
BS35L-001	1	14	35	27	3	8	4	2	2.7	5	M2	4	20	27
BS45L-001		18	45	33	4	12	5	3	3.3	8	M3	4	15	55
BS65L-001		25	65	50	6	15	12	3.5	-	-	M4	6	15	175
BS80L-001		30	80	60	8	20	15	5	-	-	M5	6	15	290
BS90L-001		35	90	70	10	20	15	5	-	-	M5	7	15	496
BS105L-001		40	105	80	12	25	20	5	-	-	M6	7	15	725
BS65L-002	2	25	65	50	6	15	12	3.5	-	-	M4	6	15	175
BS80L-002		30	80	60	8	20	15	5	-	-	M5	6		290
BS90L-002		35	90	70	10	20	15	5	-	-	M5	7		496
BS105L-002		40	105	80	12	25	20	5	-	-	M6	7		725

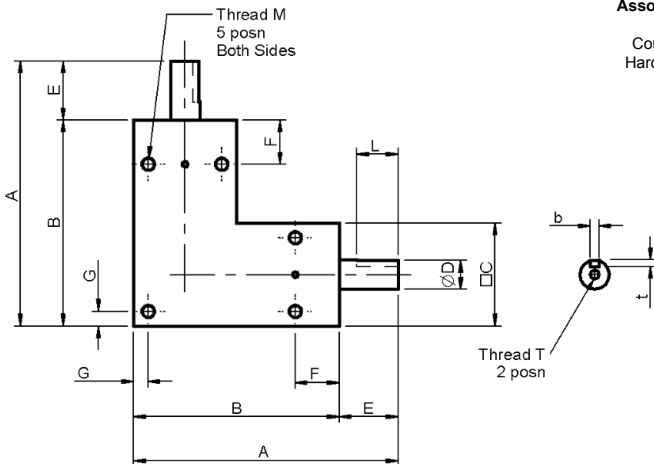
Allowable rated torque table

Part Number	Module	Teeth	Input Torque Ncm at:							
			50rpm	100rpm	250rpm	500rpm	800rpm	1000rpm	1500rpm	2000rpm
BS35L-001	0.4	20	7.1	7.0	6.8	6.5	6.2	6.0	5.5	5.3
BS45L-001	0.5		18.7	18.6	18.1	17.3	16.5	16.0	15.0	14.0
BS65L-001	0.8		73.7	72.6	69.8	65.6	61.0	58.4	52.6	47.9
BS80L-001	1.0		137.9	135.6	129.1	119.5	109.7	104.0	92.0	82.6
BS90L-001	1.25		271.8	266.1	250.4	228.0	205.8	193.3	167.8	148.2
BS105L-001	1.5		442.6	431.6	401.6	360.0	320.1	298.1	254.3	221.9
BS65L-002	0.6	14/28	20.2	20.1	19.7	19.0	18.3	17.8	16.7	15.7
BS80L-002	0.8	13/26	39.8	39.5	38.4	36.8	35.1	34.0	31.5	29.5
BS90L-002	1.0	13/26	77.6	76.7	74.3	70.5	66.4	64.0	58.6	54.4
BS105L-002	1.25	13/26	141.5	139.6	134.0	125.7	116.9	111.7	100.7	91.5



All dimensions in mm

Material:
Body - Aluminium (ISO AlMg0.7Si, AlMg1SiCu) and cast iron castings (JIS G5501)
Shaft - Stainless and carbon steels (SUS303, S45C)



Associated Products

Motors: page 2-1
Couplings: page 8-1
Hardware: page 13-1

Part number selection table

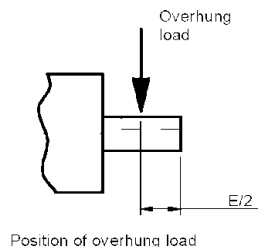
Part Number	Gear Ratio	Body Matl*	C	A	B	ØD	h7	E	F	G	Keyway			Set Screw		Shaft End	
											b	t	L	M	Depth	T	Depth
BSH70L-001	1	AL	27	70	54	6	16	9	4	-	-	-	M4	6	-	-	
BSH85L-001		AL	32	85	64	8	21	10	5	3	1.8	14	M5	7	-	-	
BSH95L-001		AL	36	95	72	10	23	13	5	3	1.8	15	M5	8	-	-	
BSH115L-001		FC	45	115	90	12	25	20	5	4	2.5	20	M5	12	M4	8	

Part Number	Backlash (arcmin)	Maximum Overhang Load (N)	Weight (kg)
BSH70L-001	15	25	0.2
BSH85L-001	15	36	0.4
BSH95L-001	15	58	0.5
BSH115L-001	10	83	1.8

*Body material and surface treatments

(AL) Al Alloy: A6063, A6061, black anodised with stainless steel shaft

(FC) Cast iron: FC200, FC250, black oxide with carbon steel shaft



Allowable rated torque table

Part Number	Module	Teeth	Input Torque Nm at:							
			250rpm	500rpm	800rpm	1000rpm	1500rpm	2000rpm	2500rpm	3000rpm
BSH70L-001	0.8	19	0.89	0.89	0.89	0.89	0.86	0.81	0.77	0.73
BSH85L-001	1.0	19	1.95	1.95	1.95	1.95	1.81	1.69	1.59	1.50
BSH95L-001	1.25	18	3.68	3.68	3.68	3.58	3.30	3.04	2.85	2.77
BSH115L-001	1.5	19	5.23	5.23	5.15	5.01	4.69	4.40	4.25	4.13

i Features and options

- Product overview - see page 3-14