



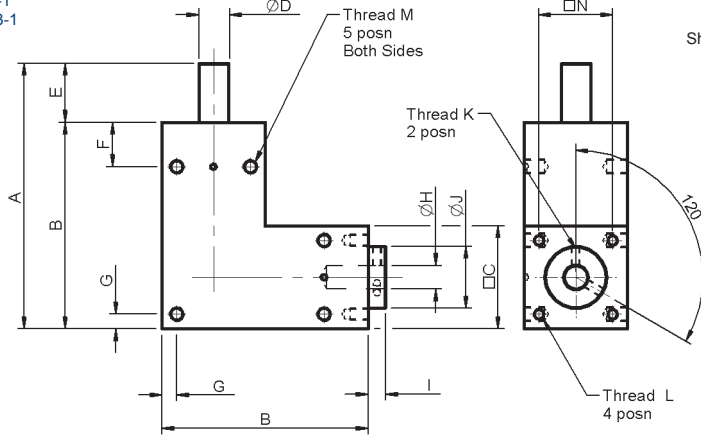
Associated Products

Motors: page 2-1
Couplings: page 8-1
Hardware: page 13-1

All dimensions in mm

Material:

Body - Anodised aluminium
(ISO AlMg0.7Si, AlMg1SiCu)
Shaft - Stainless steel (SUS303)



Part number selection table

Part Number	Gear Ratio	C	A	B	Bore			E	I	ØJ	K	F	G	M	Depth	Set Screw		Weight (g)
					ØD h7	ØH (H7)	Depth									L	N	
BSB65L-001A	1	25	65	50	6	5	15	15	5	16	M3	12	3.5	M4	6	M3	19	169
BSB65L-001B		25	65	50	6	6	15	15	5	16	M3	12	3.5	M4	6	M3	19	167
BSB80L-001A		30	80	60	8	6	19	20	5	19	M3	15	5	M5	6	M3	23	293
BSB80L-001B		30	80	60	8	8	19	20	5	19	M3	15	5	M5	6	M3	23	289
BSB90L-001A		35	90	70	10	8	19	20	6	21	M4	15	5	M5	7	M4	25	465
BSB90L-001B		35	90	70	10	10	19	20	6	21	M4	15	5	M5	7	M4	25	460
BSB105L-001A		40	105	80	12	10	23	25	6	26	M4	20	5	M6	7	M4	30	722
BSB105L-001B		40	105	80	12	12	23	25	6	26	M4	20	5	M6	7	M4	30	713

Backlash: 15arcmin

Allowable rated torque table

Part Number	Module	Teeth	Input Torque Ncm at:							
			50rpm	100rpm	250rpm	500rpm	800rpm	1000rpm	1500rpm	2000rpm
BSB65L-001A/B	0.8	20	73.7	72.6	69.8	65.6	61.0	58.4	52.6	47.9
BSB80L-001A/B	1.0		137.9	135.6	129.1	119.5	109.7	104.0	92.0	82.6
BSB90L-001A/B	1.25		271.8	266.1	250.4	228.0	205.8	193.3	167.8	148.2
BSB105L-001A/B	1.5		442.6	431.6	401.6	360.0	320.1	298.1	254.3	221.9

i Features and options

- Product overview - see page 3-14