



All dimensions in mm

Material:

Body - Anodised aluminium
(ISO AlMg0.7Si, AlMg1SiCu)

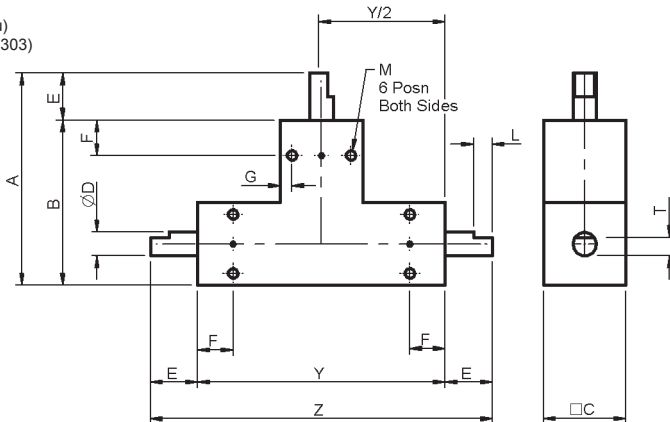
Shaft - Stainless steel (SUS303)

Associated Products

Motors: [page 2-1](#)

Couplings: [page 8-1](#)

Hardware: [page 13-1](#)



Part number selection table

Part Number	Gear Ratio	Z	Y	C	A	B	ØD (h7)	E	F	G	Shaft End		Set Screw		Backlash (arcmin)	Weight (g)
											T	L	M	Depth		
BS45T-001	1	72	48	18	45	33	4	12	5	3.0	3.3	8	M3	4	15	75
BS65T-001		105	75	25	65	50	6	15	12	3.5	-	-	M4	6		246
BS80T-001		130	90	30	80	60	8	20	15	5.0	-	-	M5	6		410
BS90T-001		145	105	35	90	70	10	20	15	5.0	-	-	M5	7		679
BS65T-002	2	105	75	25	65	50	6	15	12	3.5	-	-	M4	6	15	246
BS80T-002		130	90	30	80	60	8	20	15	5.0	-	-	M5	6		410
BS90T-002		145	105	35	90	70	10	20	15	5.0	-	-	M5	7		679

Allowable rated torque table

Part Number	Module	Teeth	Input Torque Ncm at:							
			50rpm	100rpm	250rpm	500rpm	800rpm	1000rpm	1500rpm	2000rpm
BS45T-001	0.5	20	18.7	18.6	18.1	17.3	16.5	16.0	15.0	14.0
BS65T-001	0.8		73.7	72.6	69.8	65.6	61.0	58.4	52.6	47.9
BS80T-001	1.0		137.9	135.6	129.1	119.5	109.7	104.0	92.0	82.6
BS90T-001	1.25		271.8	266.1	250.4	228.0	205.8	193.3	167.8	148.2
BS65T-002	0.6	14/28	20.2	20.1	19.7	19.0	18.3	17.8	16.7	15.7
BS80T-002	0.8	13/26	39.8	39.5	38.4	36.8	35.1	34.0	31.5	29.5
BS90T-002	1.0	13/26	77.6	76.7	74.3	70.5	66.4	64.0	58.6	54.0

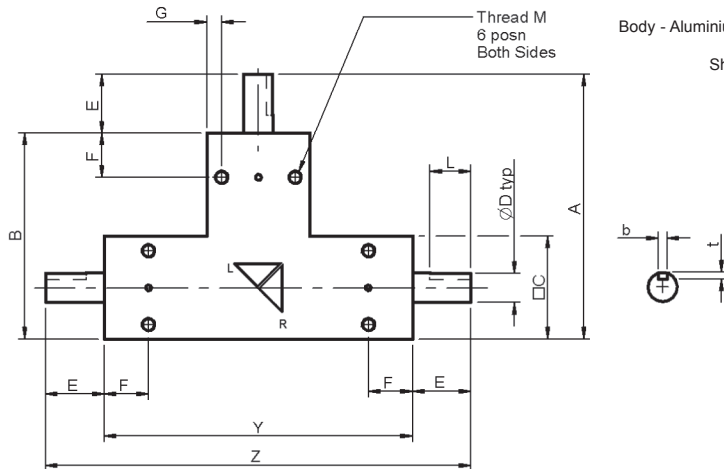
i Features and options

- Product overview - see [page 3-14](#)



Associated Products

Motors: page 2-1
Couplings: page 8-1
Hardware: page 13-1



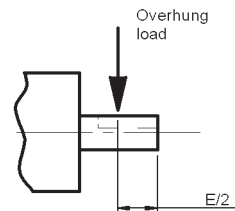
All dimensions in mm
Material:
Body - Aluminium (ISO AlMg0.7Si,
AlMg1SiCu)
Shaft - Stainless steel
(SUS303, S45C)

Part number selection table

Part Number	Gear Ratio	Body Matl*	Z	Y	C	A	B	ØD h7	E	F	G	Keyway			Set Screw	
												b	t	L	M	Depth
BSH70T-001	1	AL	113	81	27	70	54	6	16	9	4	-	-	-	M4	6
BSH85T-001			138	96	32	85	64	8	21	10	5	3	1.8	14	M5	7
BSH95T-001			154	108	36	95	72	10	23	13	5	3	1.8	15	M5	8

Part Number	Backlash (arcmin)	Maximum Overhang Load (N)	Weight (kg)
BSH70T-001	15	25	0.3
BSH85T-001		36	0.5
BSH95T-001		58	0.7

*Body material and surface treatments
(AL) Al Alloy: A6063, A6061, black anodised



Position of overhung load

Allowable rated torque table

Part Number	Module	Teeth	Input Torque Nm at:							
			250rpm	500rpm	800rpm	1000rpm	1500rpm	2000rpm	2500rpm	3000rpm
BSH70T-001	0.8	19	0.89	0.89	0.89	0.89	0.86	0.81	0.77	0.73
BSH85T-001	1.0	19	1.95	1.95	1.95	1.95	1.81	1.69	1.59	1.50
BSH95T-001	1.25	18	3.68	3.68	3.68	3.58	3.30	3.04	2.85	2.77

i Features and options

- Product overview - see page 3-14