



All dimensions in mm

Materials:

Body - Anodised aluminium
(ISO AlMg0.7Si, AlMg1SiCu)

Pinion shaft - SCM435

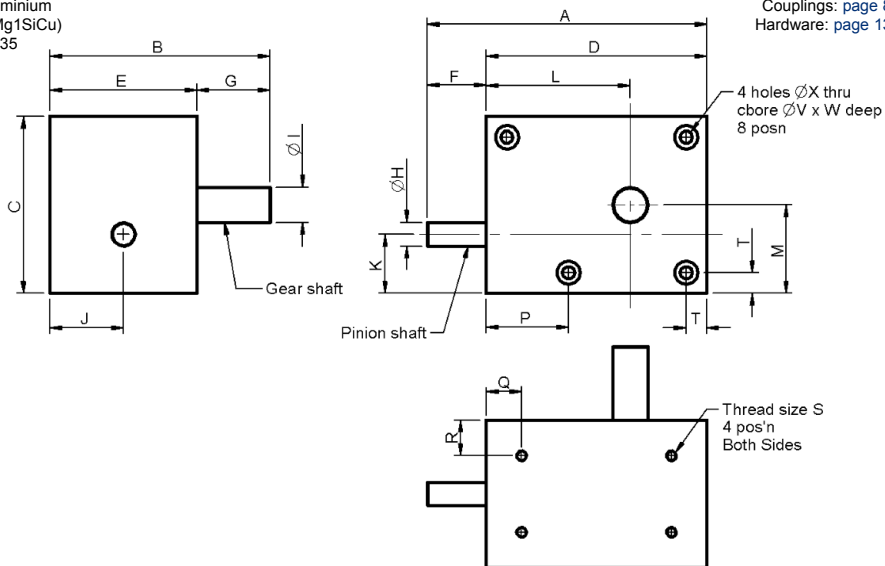
Gear shaft - S45C

Associated Products

Motors: page 2-1

Couplings: page 8-1

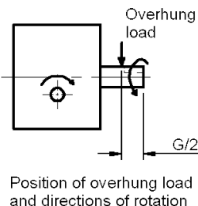
Hardware: page 13-1



Part number selection table

Part Number	Gear Ratio	A	B	C	D	E	F	G	ØH (h7)	ØI (h7)	J	K	L	M	T	P	Q	R
HY70R-005	5	70	58	45	55	40	15	18	6	8	20.0	17.5	36	22.5	5	14	10	10
HY90R-010	10	90	68	60	75	50	15	18	6	8	25.0	20.0	47	30.0	7	26	12	12
HY95R-005	5	95	75	60	75	50	20	25	8	12	25.0	20.0	49	30.0	7	28	12	12
HY120R-010	10	120	80	80	100	55	20	25	8	12	27.5	25.0	62	40.0	10	27	15	12

Part Number	Hole Dims		Drilled Holes & C/Bores			Maximum Overhang Load (N)	Weight (kg)
	S	Depth	Drill Hole ØX	Counter Bore ØV	C/Bore Depth W		
HY70R-005	M3	5	3.2	6.5	3.2	19	0.3
HY90R-010	M4	6	4.2	8.0	4.3	19	0.6
HY95R-005	M4	6	4.2	8.0	4.3	39	0.7
HY120R-010	M5	8	5.2	9.5	5.3	39	1.3



Allowable rated torque table

Part Number	Module	Teeth	Input Torque Ncm at:							
			100rpm	250rpm	500rpm	800rpm	1000rpm	1500rpm	2000rpm	2500rpm
HY70R-005	0.75	8/40	76.0	71.8	66.0	59.0	53.9	44.2	36.6	28.4
HY90R-010	0.71	7/70	75.8	70.8	63.8	56.0	50.7	41.3	34.3	27.3
HY95R-005	1.1	8/40	247.4	232.1	211.8	187.7	170.3	137.7	112.6	86.0
HY120R-010	1.0	7/70	186.3	172.7	155.7	136.6	123.5	100.0	82.7	65.0