

gmd
PENNINE

Aluminium
Rainwater Systems



A well designed rainwater system is essential for all buildings. Aluminium rainwater products are lightweight, corrosion resistant, low maintenance and aesthetically pleasing to the eye.



Controlling the rain

GMD Pennine Limited was established over 20 years ago and has become widely recognised as a market leader in aluminium rainwater products.

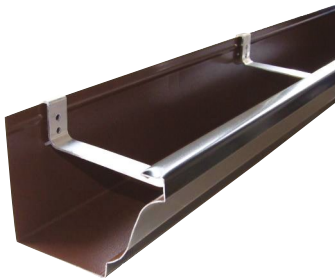
GMD manufacture, supply and distribute high quality cast, extruded and seamless aluminium rainwater systems throughout the UK. We also offer an installation service by our experienced team of fitters across the north west of England.

GMD have a valued client base consisting of local authority, building contractors, trade installers and domestic clients.



Cast Aluminium >

Curved gutters can be produced to meet clients' specific requirements.

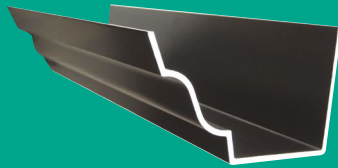


Seamless Guttering

Available in a classic Ogee gutter profile and can be installed in continuous lengths up to 35m with no joints. Hidden brackets concealed inside the gutter provide extra strength with the smooth appearance and clean lines making it an ideal choice for traditional or modern properties alike.

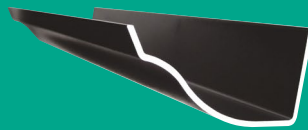
Aluminium Rainwater Solutions

With a wealth of knowledge and expertise, GMD Pennine offer a wide range of high performance aluminium rainwater products to meet your requirements. Traditional or modern, classical or contemporary we have the right solution for your building.



No.46 Ogee Gutter (cast – extruded – seamless)

A decorative ogee gutter profile is a classic design which works well on all types of buildings.



Victorian Ogee (cast)

Designed to emulate cast iron profiles. This traditional profile is ideal for heritage style buildings or to reflect the traditional style on a new building.



Box Gutter (extruded)

A modern gutter profile designed to provide a sleek contemporary look to suit all types of buildings alike. Also can be manufactured to clients' specific requirements.



Deep Beaded Half Round Gutter (cast – extruded)

Traditional half round with attractive beaded edges. The deep profile of the gutter allows an increased flow capacity. Ideal for the larger building.



Beaded Half Round Gutter (cast – extruded)

Traditional half round gutter with attractive beaded edges. Ideal choice for smaller buildings.



Half Round Gutter (cast – extruded)

Economical half round gutter profile. Ideal choice for smaller buildings.



Aluminium rainwater systems are the first choice for designers, architects and engineers as they combine functionality and cost effectiveness with forward looking form and design. The superior recyclability, strength, durability and elegant characteristics of aluminium make it the ideal sustainable material.



Colours

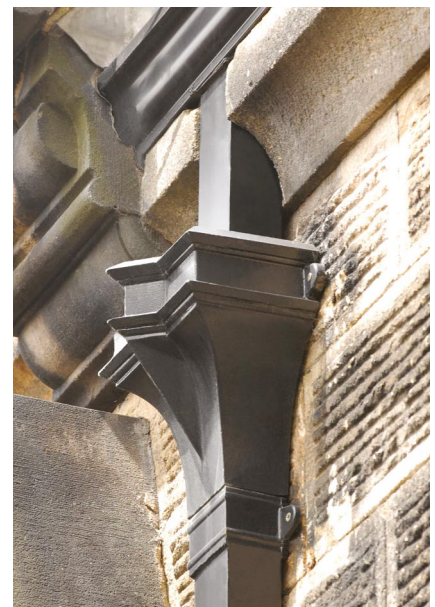
We can supply in either mill finished (uncoated) or with a polyester powder coating (inside and out) in any specific colour to suit your project. Whether you choose a traditional or contemporary finish, polyester powders have excellent covering power, are wear resistant, durable and colourfast.

Downpipes

Downpipes are the most visible part of any rainwater system. Decorative features can be added, particular to heritage buildings to emulate older style cast iron. Modern downpipes can be utilised as a feature of the building by matching the colour of the building. Available round or square.

Hoppers & Embellishments

Hoppers are a decorative feature on any building. We can provide a range of sizes and styles many of which are based on the original Victorian and Edwardian designs. We can recreate any original rain hopper in lightweight aluminium using a sand cast method; ideally suited to restoration and listed building projects. Decorative motifs, dates and emblems can be incorporated on many of the designs. These can be added to a hopper head or downpipe to enhance the look of the building.





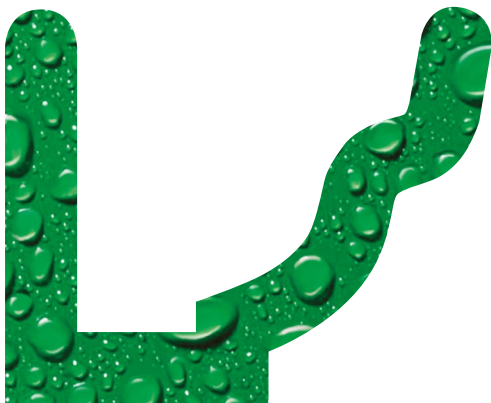
Corrosion Resistance

The natural coating of aluminium oxide provides an effective barrier against atmospheric conditions and chemicals.



Maintenance Free

Offers significant cost savings over other materials that require regular painting.



Recyclable

Once made, aluminium can be recycled time after time saving up to 95% of the energy needed to produce the primary product.



GMD Pennine offer a friendly efficient service by genuine people who care about their customers. Our mission is to provide affordable, high quality, aesthetic rainwater systems with guaranteed durability.

- ✓ **Advice and assistance** – contact our sales department for assistance with your enquiry.
- ✓ **Free, no obligation quotation.**
- ✓ **Quality assurance** – all our work is fully guaranteed.
- ✓ **Buy online** – purchase from our extensive range of aluminium rainwater products at

www.gmdpennine.co.uk



See our complete range of
products or buy online

www.gmdpennine.co.uk



gmd
PENNINE

GMD Pennine Limited
Unit 1, 1 Cross Fold, Blackburn BB2 3HD

T 0845 618 9767
F 01254 678 779
E sales@gmdpennine.co.uk
W www.gmdpennine.co.uk