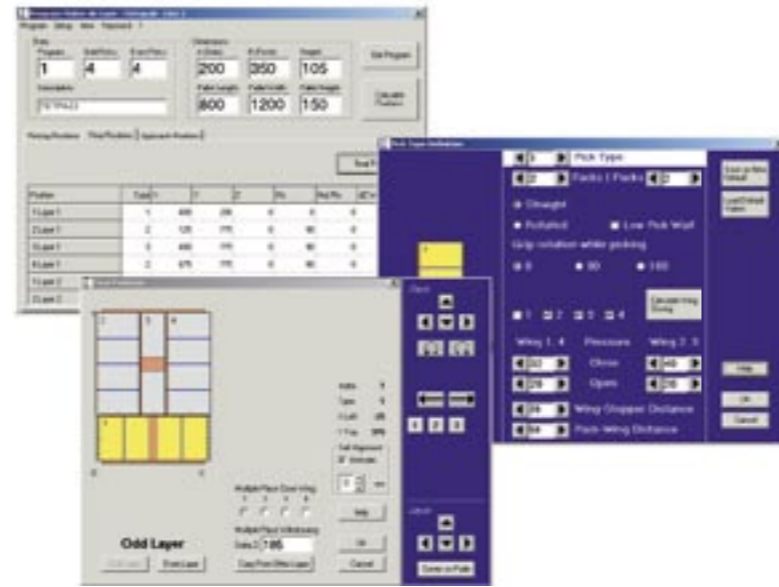


### PALLETISING PROGRAM

OCME has developed Program Maker, which allows to visualize the working programme of the robot to be visualised, simply by entering the main technical data (pack dimension, pallet size, palletising pattern). The software program is very user friendly for the operator.

Further benefits:

- Up to 5 lines can be managed
- Palletising patterns developed by "click and drop"
- New palletising pattern can be easily developed by modifying existing ones
- New palletising program download through a serial port
- Can be used with different brands of robot



### SUPERVISION

The system manages the communication between the LGV and the plant. On the LGV's computer there are 2 processes running. Communications are done by means of a TCP/IP protocol.



#### SuperVision

- Installation communications management (Plc, Pc, As400, SQL)
- Mission priority
- Mission management
- Dynamic allocation of the vehicles
- Manual missions to the vehicles
- Production management (graphics)
- Check-out of all the vehicles conditions
- Synoptic diagram of the system

#### Traffic Manager

- Communications with the vehicles (Radio)
- Vehicles traffic management (Priority, Stopping, etc)

### Why OCME?

- 40 years experience in palletising system
- Very latest technology
- Automatic size changeover
- Integrated system with palletising robot and laser guided shuttle cars
- Long term reliability and performance

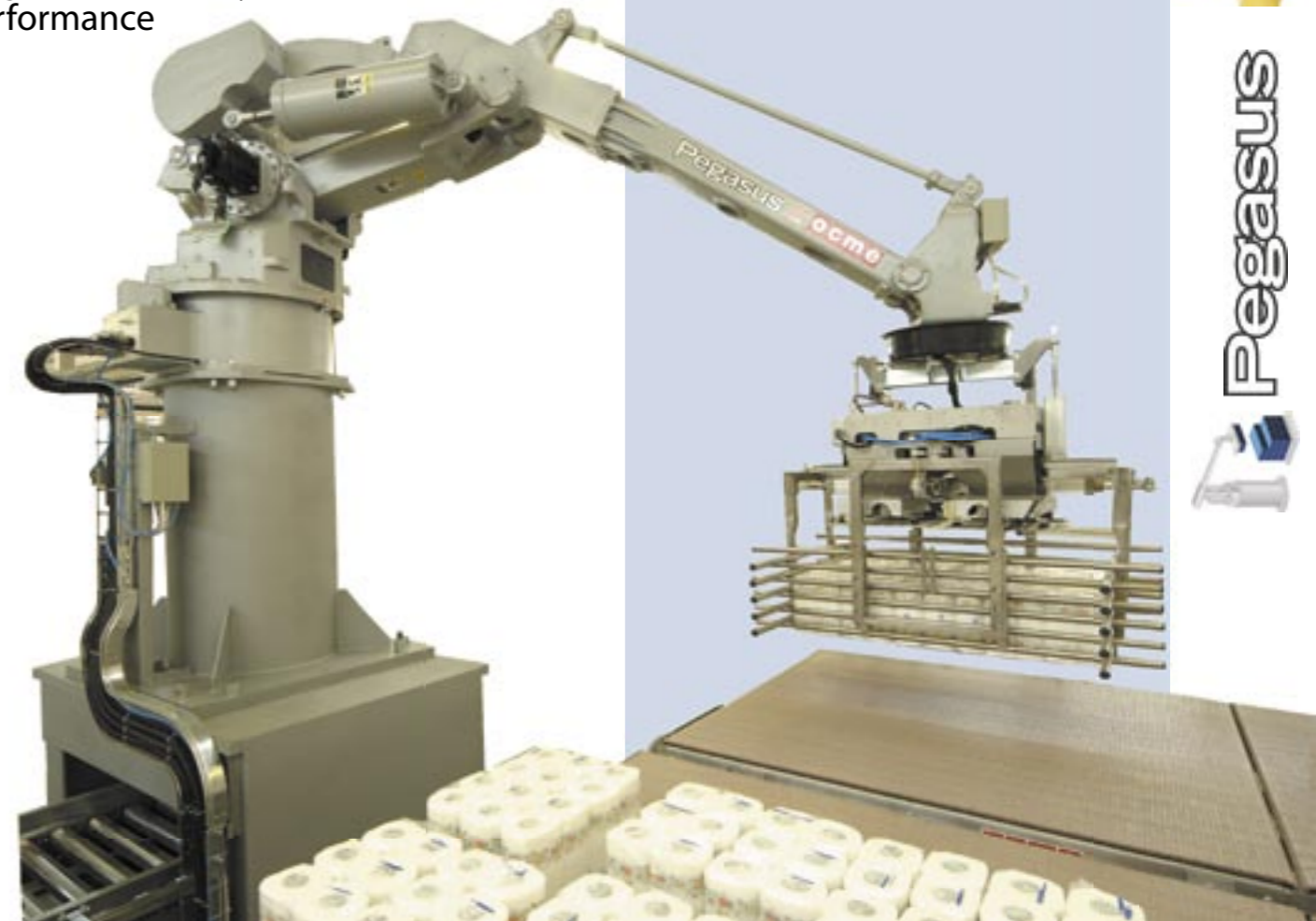


End of line systems  
for Tissue

Auriga



Pegasus



[www.ocme.it](http://www.ocme.it)

Italy: OCME S.r.l.  
Via del Popolo, 20/A  
43122 - Parma (Italy)  
Phone +39-0521-275.111  
Fax +39-0521-272924  
E-mail : info@ocme.it

United Kingdom: OCME UK Ltd.  
King John House, Kingsclere Park  
Kingsclere, Newbury  
BERKSHIRE RG20 4SW  
Phone +44-(0)1635-298171  
Fax +44-(0)1635-297936  
E-mail : sales@ocme.co.uk

USA: OCME AMERICA Corp.  
5300 N.W. 33rd Avenue, Suite 105  
Fort Lauderdale, FL 33309 (USA)  
Phone : +1 - 954- 318 7446  
Fax : +1-954-634 0238  
E-mail: info@ocmeusa.com

France: OCME FRANCE  
42 avenue Montaigne  
75008 Paris - France  
Phone: +33 (0) 6 27 89 36 20  
E-mail: commercial@ocme.fr

China: OCME Packaging Equipment (Jiaxing)  
No.289 Mu Yang Road,  
Jiaxing Economic Development Zone,  
314033 Jiaxing City,  
Zhejiang Province, P.R.China  
Tel.: +86-573-83971680  
Fax: +86-573-83971690  
E-mail: info@ocme.cn



### INTEGRATED SYSTEM WITH BUNDLING MACHINE AND PALLETISER

OCME has developed a palletising system which can be interfaced with a bundling machine without the need for accumulating conveyors. The close-coupled system has these benefits:

- Efficient allocation of the human resources
- Rapid size changeover
- Reduction in floor space
- Automatic size adjustment (bundles, packs, single tier display packs)
- Optimization of the investment



### MULTI PACK GRIPPER

The "multi-pack" gripper has been designed to handle smoothly all package shapes and all palletising patterns without changing parts.

The stability of display pallets is dramatically improved by using the gripper system, because it transfers a group of packs which are already correctly orientated.

Using three independent dams, the gripper even adjusts to form a layer with a non-rectangular profile.

The wide opening capacity of the gripper does not reduce capacity: an independent actuator lets the program choose the correct opening for each pack presented.



### LASER GUIDED SHUTTLE CAR

System entirely designed and developed by Ocme

- Reduced waiting times in between missions (OCME system is up to 4-5 times quicker than other systems available on the market)
- Only commercially available components are used

System very easy to customise

- The programme and the simple operator interface allows shorter start-up times
- High flexibility for route modifications, with reduction of costs
- Easily expanded

High flexibility

- Step-on working surface
- Functioning even with a rough or not fine flat floor
- No civil engineering work required
- Easy and quick installation
- Reflectors can be placed on one side only
- Can run on mixed paths, moving through areas normally not accessible to the laser system

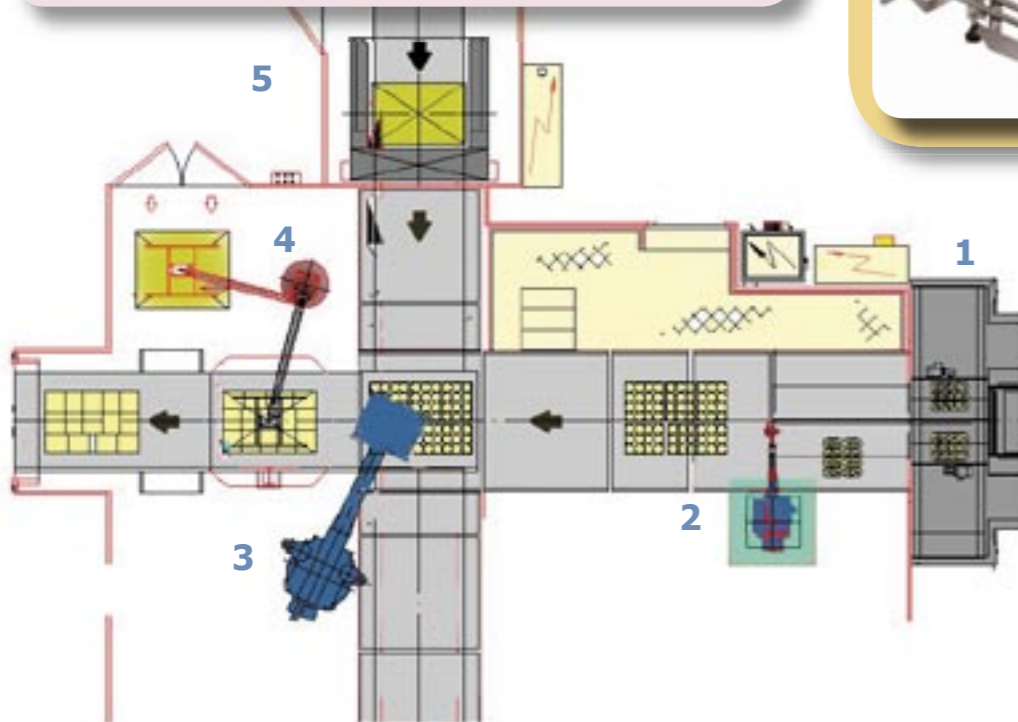
High performance

- High speed (1500 mm/Sec)
- Continuous control of the position
- Fluent movements
- Repeatability of the route +/- 5 mm
- Possibility of picking/placing full pallets up to 4 metres high (depending on the weight of full pallets).



### INTEGRATED SYSTEM WITH LAYER PICKING ROBOT

1. Divider
2. Layer forming robot
3. Layer picking robot
4. Interlayer pad dispenser
5. Empty pallet magazine



### AUTOMATIC SIZE CHANGEOVER

It is not necessary to change any mechanical parts when changing sizes, thanks to the self-adjusting blades available to handle bundles, packs and display packs.

All the parts of the picking heads are to guarantee maximum long term reliability.



### LAYER GRIPPER

The robot system equipped with layer gripper for picking a full layer (OCME patent) is the perfect solution to obtain high speed performances, high flexibility and perfect compactness.

The compactness of the layer can be set in the software program and it can be smoothly applied even if the patterns have gap in the layer and produces tight and steady pallets.

The new OCME system with layer gripper avoids the risk of touching and moving the packs already positioned because the gripper always deposits complete layers each time.

An innovative technology for layer forming allows robot to palletise even the smallest display packs of toilet and kitchen rolls without any loss in efficiency or capacity.

When required, the layer gripper can position the packs precisely and safely in pre-formed trays.