

# UPDATE

Shrink-wrap packers n°3



May 2010



Innovation across the complete range

Important innovations introduced in the range of Vega shrink-wrappers

## “Green” engineering to reduce costs and respect the environment



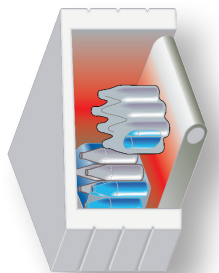
The increased sensitivity of people and markets to environmental themes has carried OCME to develop the new project of shrink-wrap packers working on energy and raw materials savings. The new generation of shrink-wrap packers offers:

- Low consumption shrinking tunnel
- Wide use of high efficiency motors
- Possibility to handle even very thin film (starting from 30 microns)
- Size change with no parts substitution
- High accessibility for operators and maintenance
- Easier maintenance for main assemblies
- “Plug and play” electrical configuration
- Improved operator interface

More info on shrink-wrap packers updates on  
[www.ocme.com](http://www.ocme.com)



# Vega HT



# Improved operator and maintenance management on the machine



## Maximum accessibility

- Full vision safety guards for the complete control of all the machine components
- Operator side free from obstacles
- Control panel sliding on rail for operation in every area of the machine
- Pan-tilt video camera for remote assistance (optional)

## "Plug & play" configuration

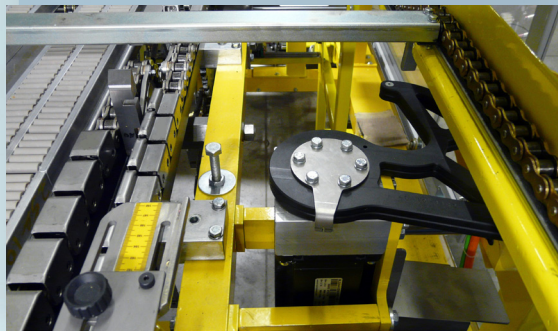
- Main components are already cabled with wires running inside the frame for a faster start-up of the machine
- Electrical panel is mounted on the top of the machine and cables are already connected for faster start-up

## Wide use of servo-motors

- Chain transmissions replaced with direct motorization using servo-motors
- Chains in the selection are motorized with brushless for speed variation at the format change

## Modular machine

- The machine has been constructed to a modular design
- Possibility to build up the machine using different options and solutions
- All the range is manufactured starting from 2 basic frames for more flexibility in production



### Size change without parts replacement



For up to 60 cycles/minute versions, the size change with no pieces substitution is available. Infeed and selection of Vega HT are completely redesigned to permit a size change with no substitution of mechanical pieces. In only 5 minutes two operators can change format and start again in producing a new one.

### Each infeed chain lane is individually motorized



Infeed lanes are individually motorized and adjustable using a handwheel together with channelling blades and blades in the pusher area. Each chain has its own brushless motor (optional). Possibility to replace handwheel with motors to further reduce size change times and manpower.

### Containers selection Version SE



In the area passing from the chain lanes to the pusher a group of photocells detect the exact position of each bottle in every lane and accelerate/decelerate the belt feeding the rows of containers to the belt in the pusher area. An upper group of belts help the transfer pushing on the caps and assure stability during passage between the 2 sections. This device ensures that zero pressure is applied in the accumulation area.

### Easier maintenance



Film cutting and feeding ramp unit is mounted on rails for extraction to allow for maintenance (ie. film cutting blade replacement, cleaning of the rubber coated rollers, film feeding belts substitution, etc.)

### Reel unwinding system and automatic welding



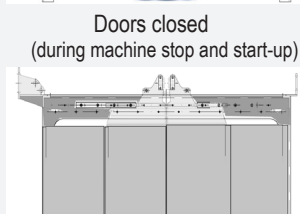
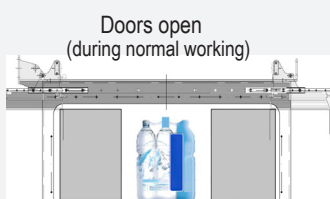
- Automatic splicing unit with "head to head" sealing and check of correct welding
- Reel pins with pneumatical blocking system are motorized with brushless motors to reduce film stress

### Film wrapping unit



Film wrapping unit has been designed to facilitate easy replacement of the belt in case of wear. Machine stop time is reduced to a maximum of 20 minutes.

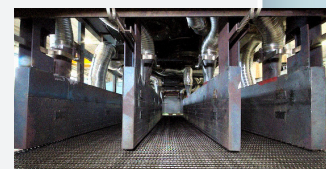
### Low consumption shrinking tunnel



The tunnel is the part of the machine where R&D department applied major efforts, with the aim of reduce consumption and improve quality of the bundle. Main features:

The extra saving kit includes:

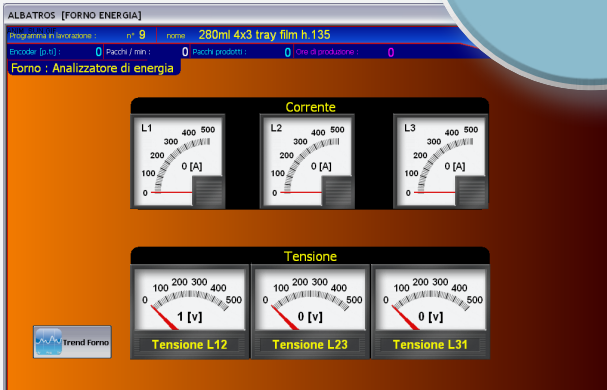
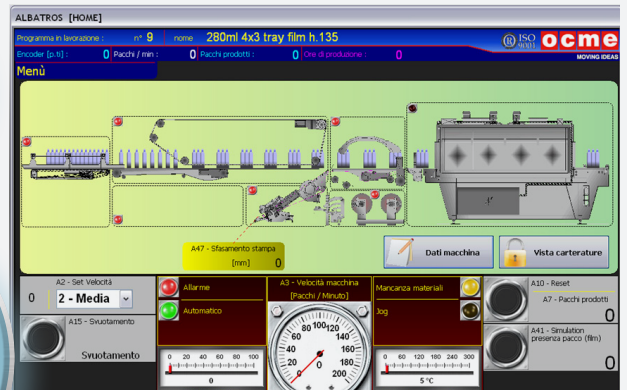
- Channelising pipes for the air flow
- Automatic opening/closing doors at the tunnel infeed and outfeed
- Temperature detector of the mesh conveyor
- Cooling fans with servo motors
- Thermal power adjustable in real time according to the production capacity
- Mesh conveyor speed adjustable in real time according to the production capacity



# Albatros 5

New graphic menu of the Albatros 5 allow to browse through different parts of the machine by simply touching them on the screen. For each part of the assembly, information about the working cycle, operative commands, alarms and data programming are highlighted, limiting the access according to the operator level.

**Easy to use**  
 Operator interface designed even for non-skilled operators with low level of knowledge in automatic machines



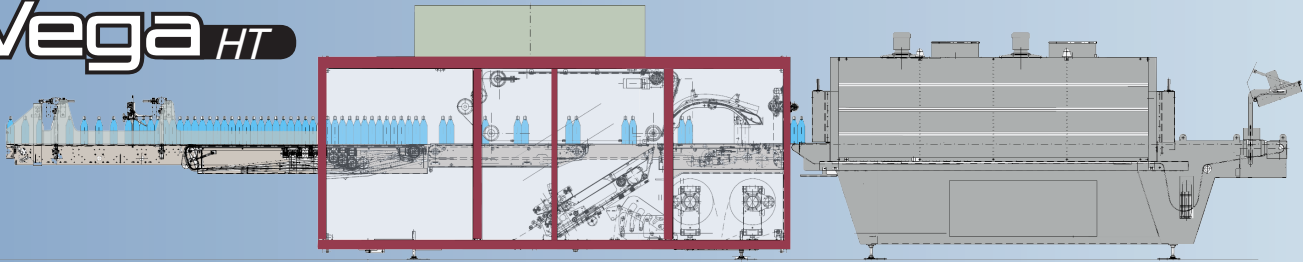
Picture above: Power analyzer

## Main features

- Alarms giving possible causes and remedies
- Programmed maintenance activities are periodically highlighted on the screen with possibility to keep track of them
- Possibility to record non-scheduled maintenance activities
- Guided size change procedure with possibility to customize with notes
- Easy customisation of each starting page according to operator level and preferences (possibility to give customised access through smart card)
- Possibility to have remote assistance with video camera



# Vega HT



## ... a "package" of benefits

- for the operators
- for the reduction of start-up time
- for cost reduction
- for the environment



OCME S.r.l.  
 Via del Popolo, 20/A  
 43122 Parma (Italy)  
 Phone +39-0521-275111  
 e-mail: info@ocme.it

OCME UK Ltd.  
 KingJohnHouse,KingsclerePark  
 Kingsclere-Newbury  
 Berkshire RG20 4SW (UK)  
 Phone:+44-1635-298171  
 e-mail: sales@ocme.co.uk

OCME AMERICA CORP.  
 5300 N.W. 33rd Avenue,  
 Suite 105FortLauderdale  
 FL 33309 (USA)  
 Phone:+1-954-3187446  
 e-mail:info@ocmeusa.com

OCME FRANCE  
 42 avenue Montaigne  
 75008 Paris (France)  
 Phone:+33(0)232.32.20.47  
 e-mail:commercial@ocme.fr

OCME Packaging Equipment (Jiaxing)  
 No.289 Mu Yang Road,  
 Jiaxing Economic Development Zone,  
 314033 Jiaxing City,  
 Zhejiang Province, P.R.China  
 Phone: +86-573-83971680  
 Fax: +86-573-83971690  
 E-mail: info@ocme.cn

OCMEXICO  
 Homero 425 Desp. 2, Torre "B"  
 Col.Chapultepec Morales  
 México D.F., CP 11570  
 Phone: +52-55-52542401 ext. 103  
 Fax: +52-55-52542401 ext. 106  
 E-mail: info@ocme.com.mx