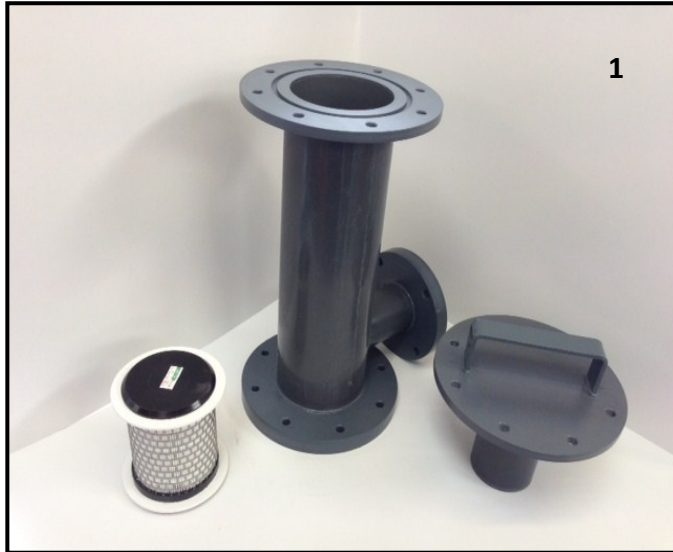


# EMCEL Filters Limited

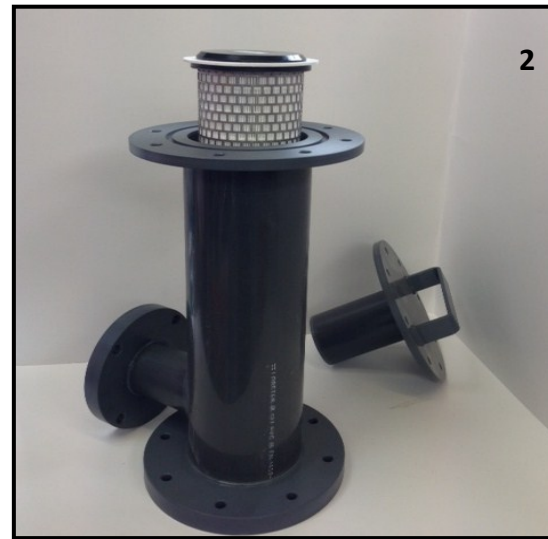
Blatchford Road, Horsham, West Sussex, RH13 5RA, UK

Tel: +44 (0)1403 253215 Fax: +44 (0)1403 217011 [www.emcelfilters.co.uk](http://www.emcelfilters.co.uk)



1

Push-Push HEPA unit. 1 off HEPA Filter (clean) and 1 off unit (containing no filters as yet.)



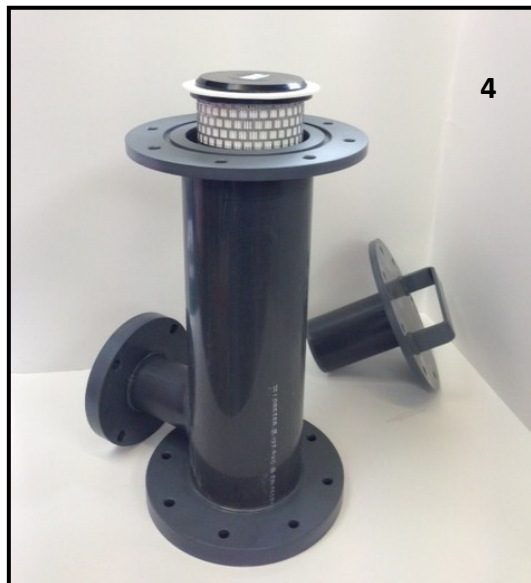
2

1 off HEPA Filter (clean) being pushed into unit .



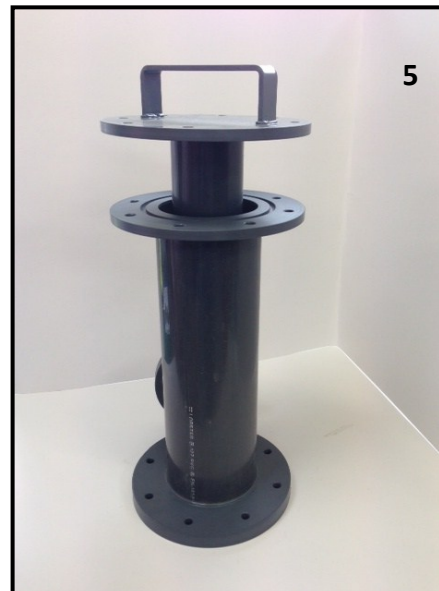
3

HEPA Filter (clean) now in the unit, unit requires 2 HEPA filters in order to be in the correct place. 1 working and 1 on standby.



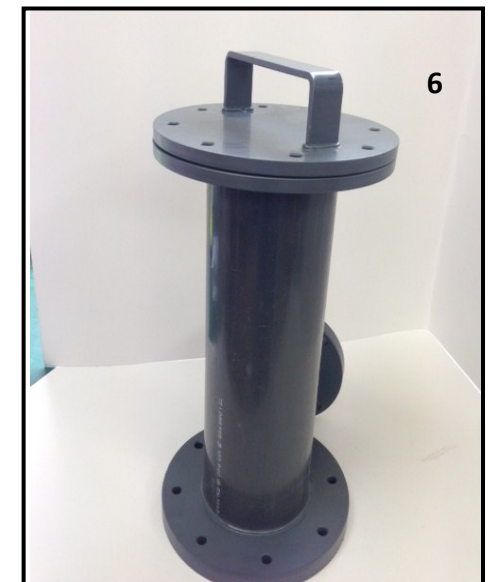
4

The first HEPA Filter is now in the unit, and the second filter is being inserted on top. (this unit is the standby.)



5

Both HEPA filters are now in the unit and the lid is used to push them into position, 1 working and 1 standby.



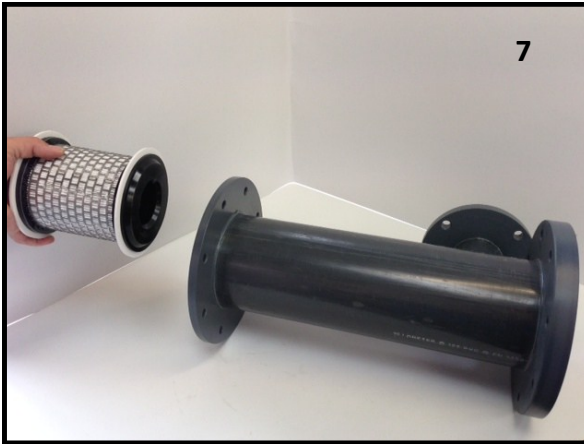
6

Both HEPA filters are now in the unit and when the lid is flush to the top of the unit the filters will be in place.

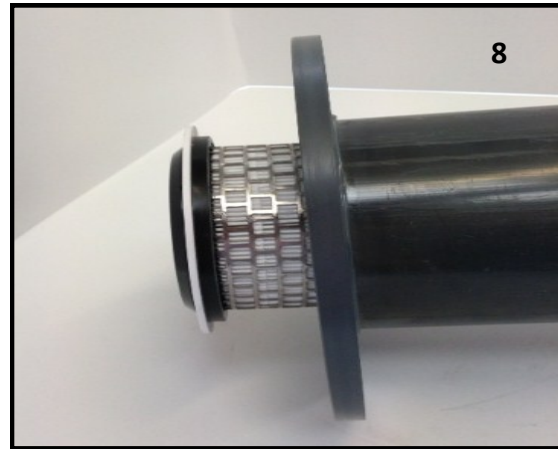
# EMCEL Filters Limited

Blatchford Road, Horsham, West Sussex, RH13 5RA, UK

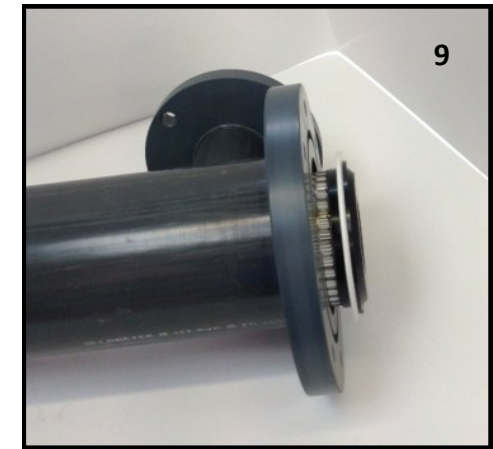
Tel: +44 (0)1403 253215 Fax: +44 (0)1403 217011 [www.emcelfilters.co.uk](http://www.emcelfilters.co.uk)



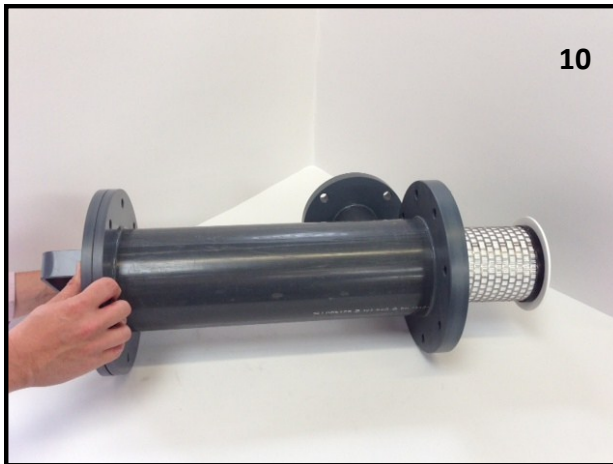
Replacing the dirty filter. When the filter needs replacing simply remove the lid and push another clean standby filter in.



This shows the clean standby filter going in the top of the filter unit.



This shows the dirty filter being pushed from the unit and into the cupboard to which the unit is affixed.



Replacing the lid pushes the clean filters into place and the dirty one out of the unit. It may need a wiggle to remove it entirely.

Please note this unit and the large unit are BOTH to mounted horizontally. These photos and directions are an example only and do not accurately depict the filter units in-situ.

**References for the order and spare parts will be here.**

**Please quote the above number when ordering spares.**

# EMCEL Filters Limited

Blatchford Road, Horsham, West Sussex, RH13 5RA, UK

Tel: +44 (0)1403 253215 Fax: +44 (0)1403 217011 [www.emcelfilters.co.uk](http://www.emcelfilters.co.uk)



Unlike the small unit the large HEPA unit does not have the option to store a standby filter within itself. It will however also be mounted HORIZONTALLY.



One HEPA filter fits into the unit.



To remove and replace the used filter you remove the lid and push the used filter through the unit using the clean filter.



Please note this unit and the large unit are BOTH to mounted horizontally. These photos and directions are an example only and do not accurately depict the filter units in-situ.

**References for the order and spare parts will be here.**

**Please quote the above number when ordering spares.**

Replace the lid and secure. Dispose of the used filter as directed.