



# Cheshunt Fabrications Ltd

Unit 9a & 9b, Quickbury Farm  
Hatfield Heath Road  
Sawbridgeworth  
Hertfordshire  
CM21 9HY

Phone: 01279 600866  
01279 600868

Fax: 020 8609 0050

[www.fabber.co.uk](http://www.fabber.co.uk)

[sales@fabber.co.uk](mailto:sales@fabber.co.uk)

**Quality in the making**



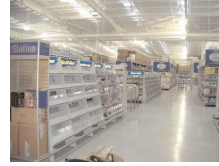
**Architectural**  
Page 3



**Kitchen Appliance**  
Page 5



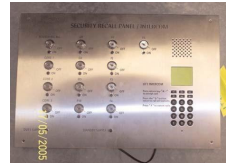
**Display Cabinets**  
Page 6



**Display Racking**  
Page 7



**Stainless steel Cladding**  
Page 8



**Control Panels**  
Page 9



**Special Design Radiators**  
Page 10



**Metal Furniture**  
Page 11



**Display Systems**  
Page 12



**Island Units**  
Page 13



**Bespoke Store Display**  
Page 14



**Supply & Fit Handrail**  
Page 23



**Frames & Housings**  
Page 24



**Conveyor Hoppers**  
Page 25



**Hoppers MS & SS**  
Page 26



**Steel Staircases**  
Page 27



**Industrial Heaters**  
Page 28



**Banking Units**  
Page 29



**Checkouts**  
Page 30



**Building Steelwork**  
Page 32



**Spiral Stairs**  
Page 33



**Swing Boards**  
Page 34



**Enclosures**  
Page 36



**VDU Displays**  
Page 37



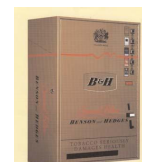
**Units with Audio**  
Page 38



**Banking Security**  
Page 39



**X-Ray Scanners**  
Page 40



**Vending**  
Page 41



**Charger Units**  
Page 43



**Designer Fires**  
Page 44





## Architectural Steel Work



One of our longest serving customers asked us to design, produce and install this stainless steel canopy to their building, ready for an important meeting.

This was a last minute thought from them and we had seven days from conception to completion.

By designing the canopy as a built-in-factory item we were able to reduce our on site erection time to four and half hours. Crane time was just under one hour. Only eight holding down bolts and four connection bolts were required for the whole structural assembly.





[www.fabber.co.uk](http://www.fabber.co.uk)

[sales@fabber.co.uk](mailto:sales@fabber.co.uk)

## Architectural Steel Work







## Stainless Steel Kitchen



All finished 1.2mm 304 satin silicon





## Glass Cabinets

Secure glass manufactured for retail industry



Aluminum extruded framework with chequer plate back panel. Lockable glass doors to front and fixed glass panels to side. Light box to top with illuminated signage. All glass supplied was toughened safety glass.

A variation of the above aluminium glass cabinet to comply with the customer's more specific requirements.







[www.fabber.co.uk](http://www.fabber.co.uk)

[sales@fabber.co.uk](mailto:sales@fabber.co.uk)

## Retail racking

cd, dvd, video, games etc



Designed and manufactured in house to the clients exacting requirements, such as modular design, maximising product exposure, flexible shelving to cater for CDs, DVD's Games & Videos, flat pack for minimal transport costs and quick assembly and manufacturing.

All 1.2mm zintec base fabrications, stainless steel legs and kick rails



[www.fabber.co.uk](http://www.fabber.co.uk)

[sales@fabber.co.uk](mailto:sales@fabber.co.uk)

## Public toilets

fitout in stainless steel



Stainless steel dull polish backed onto mdf and mounted on sub frames.

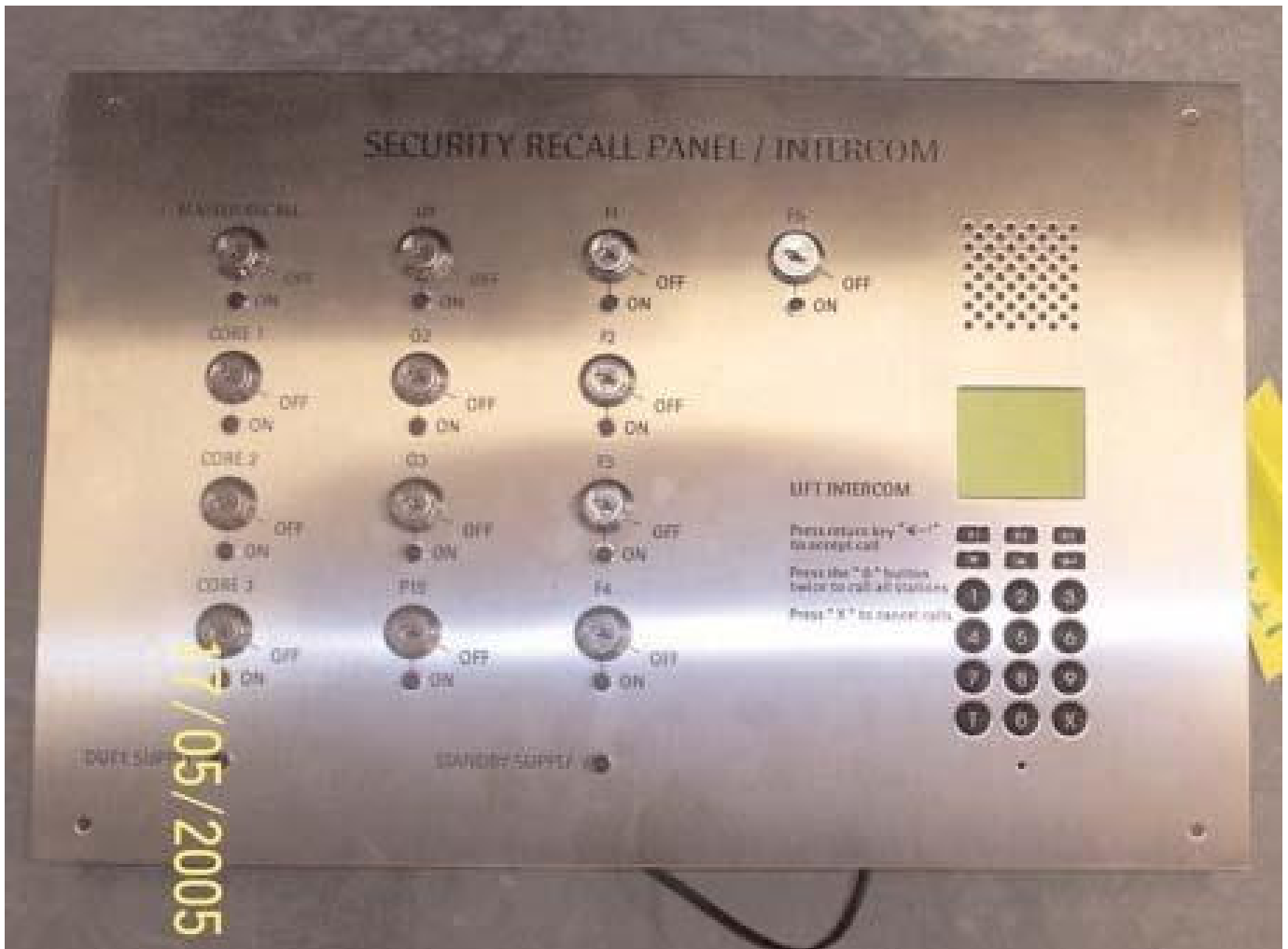




www.fabber.co.uk

sales@fabber.co.uk

## Control panels in stainless steel



Stainless steel control panels made to order to suit varying requirements which is easily controlled with our CAD, CAM design and manufacturing software coordinating with our CNC machines.



[www.fabber.co.uk](http://www.fabber.co.uk)

[sales@fabber.co.uk](mailto:sales@fabber.co.uk)

## Radiators

feature radiator



Stainless steel dull polish towel radiator, other designs are available on request





## Laboratory cabinets

for Saudi Arabia



Laboratory furniture made from zintec coated mild steel sheet and powder coated to customer specification  
Also available in stainless steel for higher standards of hygiene.



## Complete Display Systems



Full racking system design for a major high street store.  
Clients requirements included in-shop storage, maximised faces, browsing, Island units and island listening stations, alternative use of timber inlays for his upmarket store, flexible in-store layout, height restrictions for security and comprehensive floor and wall display coverage.

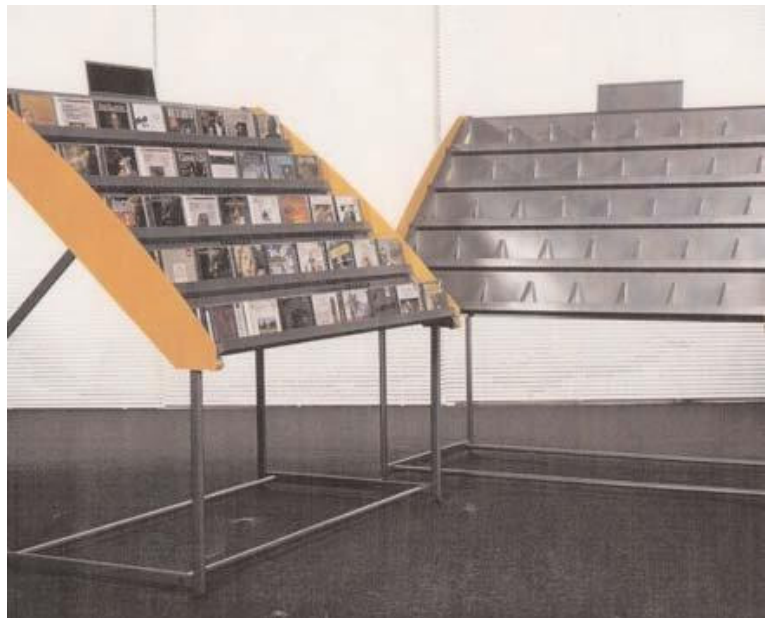
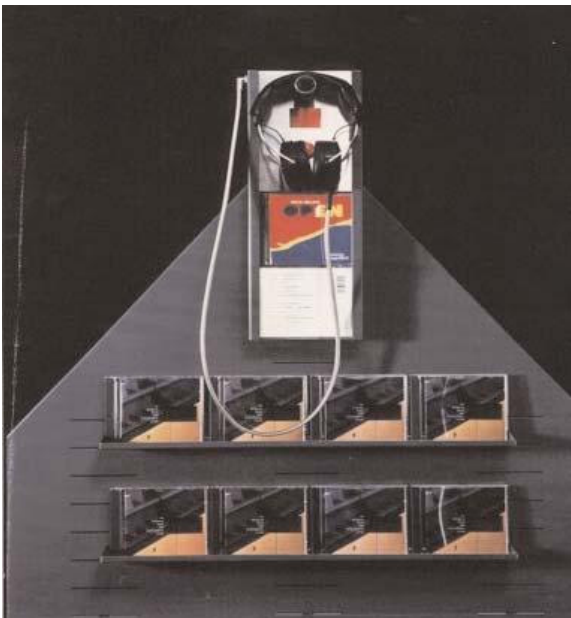
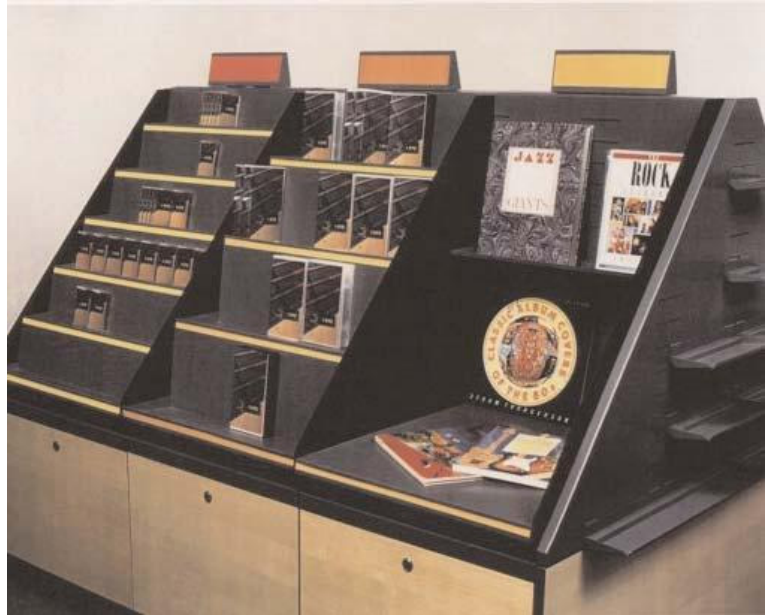
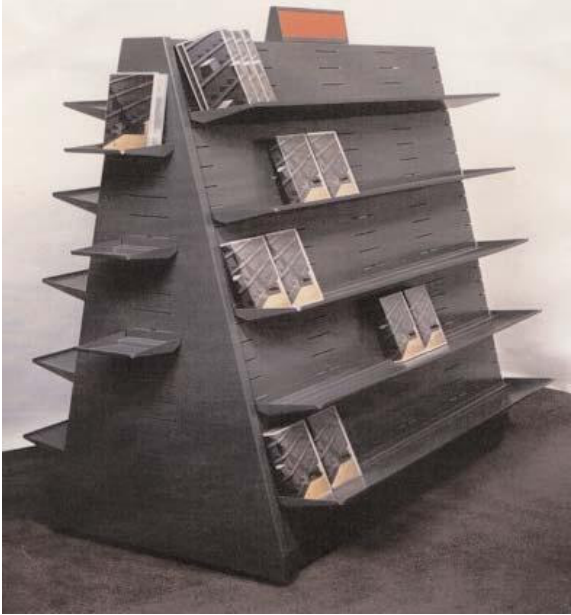
Zinc coated mild steel powder coated to customer specification





## Retail racking systems

Bespoke designs to customer specification



Various designs of racking to suit clients specifications as well as bespoke designs to suit specific requirement



[www.fabber.co.uk](http://www.fabber.co.uk)

[sales@fabber.co.uk](mailto:sales@fabber.co.uk)

## Retail Racking Systems

Complete design package to cater for customer specification



Virgin Mega-store Frankfurt





## Retail Racking Systems



Another view of Virgin Megastore in Frankfurt showing Listening Stations.





[www.fabber.co.uk](http://www.fabber.co.uk)

[sales@fabber.co.uk](mailto:sales@fabber.co.uk)

## Open Frame Support for Economical Display







[www.fabber.co.uk](http://www.fabber.co.uk)

[sales@fabber.co.uk](mailto:sales@fabber.co.uk)

## Corner Designs to Maximise Display





[www.fabber.co.uk](http://www.fabber.co.uk)

[sales@fabber.co.uk](mailto:sales@fabber.co.uk)

## Large Scale Free Standing Display





[www.fabber.co.uk](http://www.fabber.co.uk)

[sales@fabber.co.uk](mailto:sales@fabber.co.uk)

## Display Racking Modular Designed







[www.fabber.co.uk](http://www.fabber.co.uk)    [sales@fabber.co.uk](mailto:sales@fabber.co.uk)

## **Specially Designed Displays**

**Three sided Island Display with Euro-hooks and Fully Adjustable Shelves**





[www.fabber.co.uk](http://www.fabber.co.uk)

[sales@fabber.co.uk](mailto:sales@fabber.co.uk)

## Quick Sell Island Displays and Dump Bins





[www.fabber.co.uk](http://www.fabber.co.uk)    [sales@fabber.co.uk](mailto:sales@fabber.co.uk)

## **Cosmetic Display Tables**

Featuring Machine Turned Polished Shelves







[www.fabber.co.uk](http://www.fabber.co.uk)    [sales@fabber.co.uk](mailto:sales@fabber.co.uk)

## **Stainless Steel/Glass Balustrade**

For offices and retail stores



Stainless Steel rails with toughened safety glass panels.  
Complete service includes site measuring, design, drawings, manufacture and installation.



## Heat Sealing Machines

For bag sealing



Manufacturing from customer's own design and drawings or joint design with the client to suit his requirements and our manufacturing processes in order to achieve an economic product.  
Mild steel powder coated and stainless steel versions.



# Vacuum Conveying Machines

Materials handling and separation (grains)



Mild steel powder coat and  
Stainless steel versions





## Insulated Dryer Hoppers

Materials handling and separation (grains)



With our software package for advanced pattern work, we can produce intricate work in this field in a matter of minutes, making awkward pieces and one off jobs, cost effective.

Double skin dryer hoppers with cavity filled with insulation and supporting framework





[www.fabber.co.uk](http://www.fabber.co.uk)    [sales@fabber.co.uk](mailto:sales@fabber.co.uk)

## Fire Escape







## Space heaters



Industrial Heaters including Body Kits, Heat Exchangers, Combustion Chambers as well as Ducting components.



Mild steel and galvanised steel as well as stainless steel versions.



## Bank Teller Units



Various types of 'Pass through' trays. designed for the security trade. Standard and ballistic rated., and including audio.



## Supermarket Checkouts



Mild steel and stainless steel panel-work for the body and worktop, to various designs of checkout units supplied by a well known company for many of the major supermarket corporations.





[www.fabber.co.uk](http://www.fabber.co.uk)    [sales@fabber.co.uk](mailto:sales@fabber.co.uk)

## Checkouts for Sainsbury's





# Lifts

Primary and secondary steel work



Lift machine room structural steelwork



Lift secondary steel work, complete fit out



## Spiral Staircase







## Swing Sign Frames



Mild steel versions  
(powder coat)  
and stainless steel



[www.fabber.co.uk](http://www.fabber.co.uk)

[sales@fabber.co.uk](mailto:sales@fabber.co.uk)

## Fixed Upright Sign Frames

Floor and Desk Mounted

Large and small ideal for  
Reception Lobbies





## Electrical cabinets



Various power supply cabinets and transformers







## Water and Fire Rated Cabinets and Housings



### Tottenham Court Road Underground Station

Video advertising for passengers travelling on escalators.  
Constructed from 1.5mm 304 Stainless steel, fully welded construction and IP65 rating, LUL fire spec, possibly one of our most challenging projects to date.



## Security products

Stainless steel and mild steel





[www.fabber.co.uk](http://www.fabber.co.uk)

[sales@fabber.co.uk](mailto:sales@fabber.co.uk)

## Security Products

Stainless steel and Mild Steel







## X-ray Screening for Parcels and Baggage



Powder coated mild steel components with protective shielding lead skins  
supplying one of the major international x-ray scanning equipment suppliers.

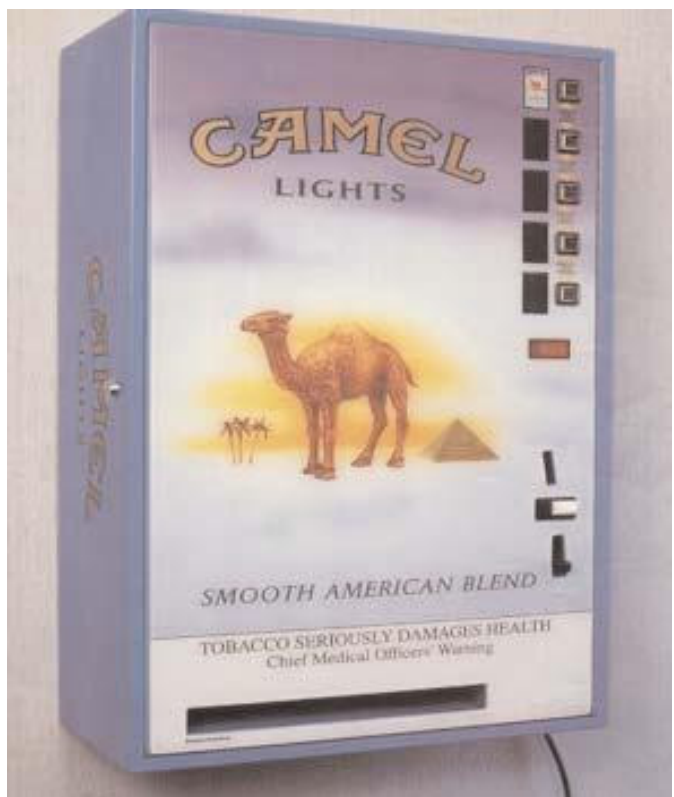


[www.fabber.co.uk](http://www.fabber.co.uk)

[sales@fabber.co.uk](mailto:sales@fabber.co.uk)

## Vending Machines

Wall Mounted Cigarette Vending



Mild Steel and occasional Stainless Steel



[www.fabber.co.uk](http://www.fabber.co.uk)    [sales@fabber.co.uk](mailto:sales@fabber.co.uk)

# Confectionary Vending

Floor Standing Full Height Vending Unit







## Transformers/chargers



Mild steel powder coat and stainless steel versions



## Designer Fireplaces



Designer fireplaces made to bespoke designs in stainless steel and mild steel.