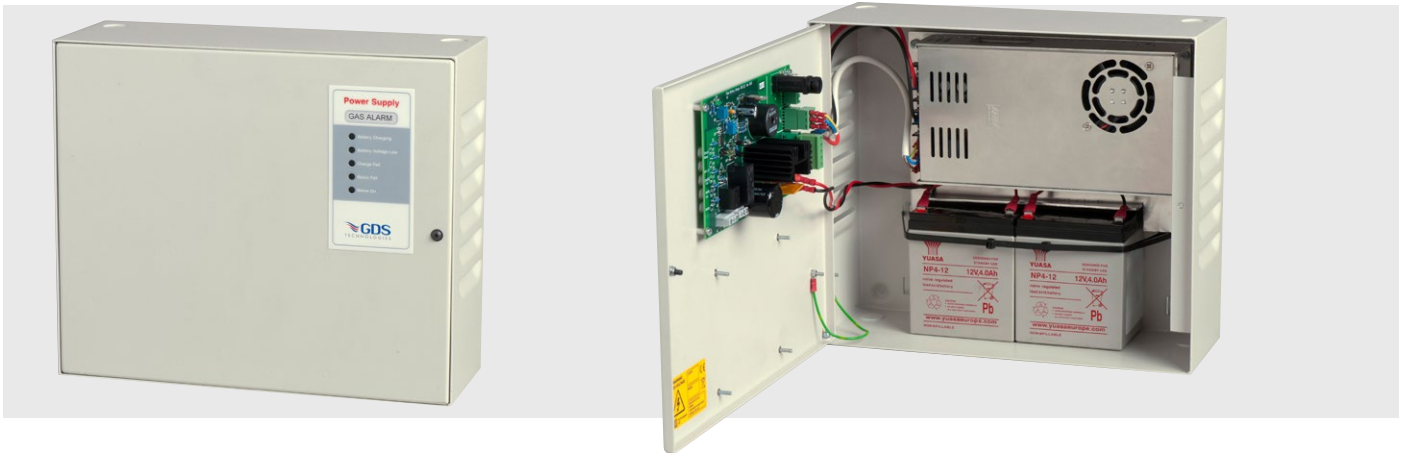


# GDS707

## POWER SUPPLY PULSED BATTERY CHARGER



**Output** 27V Nominal (26~31.5Vdc adjustable)

**Rated Current** 0~11.7A (316W)

**Mains Input** 100-230Vac (terminals J2)

**Frequency Range** 47~63 Hz

**Standard Internal Battery** 24Vdc 4Ah - others available (terminals B+J5 / B-J6)

**Protection** short circuit, overload, over voltage, over temperature (shutdown and automatic recovery)

**Ripple and Noise** (max.) 200mVp-p

**Operating Temperature** -15°C to +50°C

**Battery Charging LED** flashes to show when the battery is charging. The duration of the flashes changes according to how close the battery voltage is to its float value and will be dim and infrequent when fully charged

**Battery Voltage Low LED** will illuminate when the battery voltage is low (at approximately 20 volts)

**Charge Fail LED** shows that battery charging has failed which may be because mains has also failed but could be because the battery has failed or is disconnected

**Mains Fail LED** indicates mains power has been lost

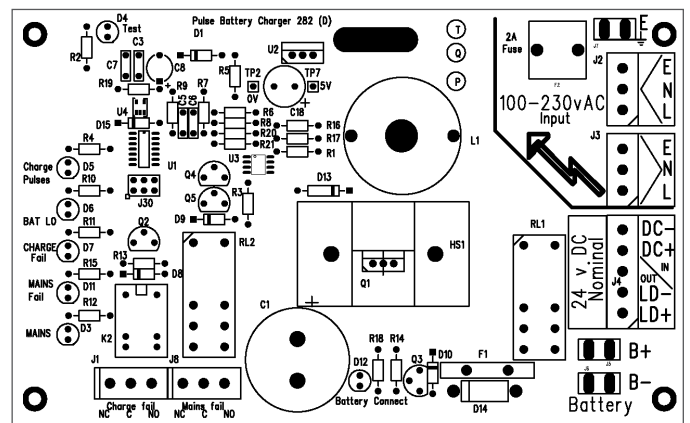
**Mains On LED** is on when mains power is detected

**Test LED** (interior) indicates the version of software at power up with flashes and thereafter shows which of 6 possible states the charger is operating in

**Charge Fail Relay** SPCO rated @ 1A-120Vac – Connection via terminal J1

**Mains Fail Relay** Normally energised SPCO rated @ 1A-250Vac – Connection via terminal J8

State	Test LED Consecutive Flashes	Description
1	☼	Battery Low
2	☼ ☼	Battery Charging
3	☼ ☼ ☼	Measuring Battery Condition
4	☼ ☼ ☼ ☼	Battery Fail
5	☼ ☼ ☼ ☼ ☼	Battery Voltage Too High
6	☼ ☼ ☼ ☼ ☼ ☼	Battery Discharging



**Material** Mild steel 1.2mm

**Finish** Powder coat - texture

**Colour** BS00A01 Ash Grey

**Dimensions** W314 x H264 x D116mm

**Cable Entry** 20mm knock-out entry top/bottom/rear

**IP Rating** IP52

**Mounting** 264x237mm Footprint with 4 M5 Holes

**Weight** 4.9Kg, 8.0Kg (with batteries)

