

[www.agprecision.co.uk](http://www.agprecision.co.uk)





## A&G Precision and Sons

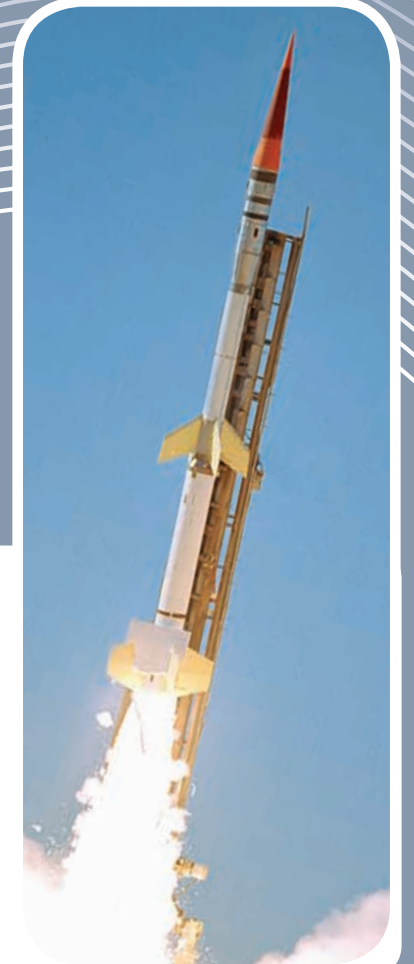
Established in 1989, A&G Precision and Sons Ltd (A&G) have grown to become a respected supplier of precision-engineered components for the aerospace, defence and Formula 1 sectors.

Managing Director Arthur Pinder along with Company Directors Scott Pinder, Michael Pinder and Wayne Richardson are supported by a skilled workforce of over 40 people, operating round-the-clock shifts which allows them to offer a Fast Track Service.

Based at Preesall on Lancashire's Fylde Coast A&G is situated at the centre of the UK's premier aerospace manufacturing cluster and is an integral part of the North West's Aerospace supply chain.

Continued investment in state-of-the-art manufacturing technology has placed A&G at the forefront in the production of complex components. Recent investments include the introduction of 7 Axis Sliding Head Technology for high precision batch work.

In addition to high precision batch components, A&G also provides a range of additional services including prototypes, sub-assembly manufacture and reverse engineering.



## Mission Statement

“A&G wish to be recognised as a rewarding place to work with highly effective skilled people, offering a state-of-the-art facility which is safe and clean, and affords a pleasant working environment. We continue to supply precision components to our customer requirements whilst remaining competitive through the continued investment in our people, technology and process.”



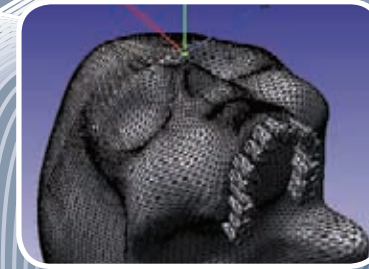
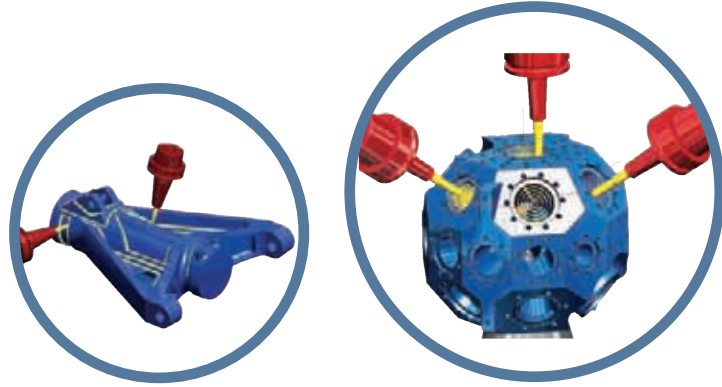
Big Enough To Deliver Small Enough To Care



## Capabilities

A&G has invested heavily in the latest manufacturing technology, facilities and IT infrastructure ensuring it has a significant machining capability.

The use of sophisticated software such as Catia and Open Mind's Hypercad/Hypermill offers complete compatibility with customers most commonly used formats including CatModel, Iges, Step, DWG, e2, e3, VDA, STL & DXF.



## Manufacturing Capability

Significant Investment in the latest manufacturing technology, quality management systems, buildings, IT and infrastructure has established A&G as a key strategic supplier of precision machined components to the UK market.

With significant state of the art multi-axis machining capability the CNC/CAM manufacturing scope has been further enhanced by significant investment in sophisticated design software interfaces which offer complete compatibility with all of the most commonly used CAD formats.







## Quality Management Systems

A&G operate a mature quality management process that is the established way of working. These systems are independently assessed by SGS and are central to delivering the On Time In Full quality products.

The A&G Quality Team have many years experience in the aerospace, defence and automotive sectors documenting, applying and monitoring the quality system to ensure compliance with the relevant quality standards and customer requirements.

In addition to Quality systems approved to ISO 9001 and AS9100, A&G also hold a number of independent customer approvals including:

**BAE Military Air & Information**  
**BAE Part 3**  
**BAE Regional Aircraft**  
**Safran Messier-Bugatti-Dowty**  
**Safran Aircelle**  
**ADS**

A&G's Inspection team monitor compliance from first off's through manufacture until final inspection and release.

First Article Inspections are performed at the company's in-house inspection facility using computerised CMM's which provide comprehensive reports and certification for all components.



Rev C

Regional Aircraft

**BAE SYSTEMS**

Military Air & Information

**BAE SYSTEMS**



## Aircraft Standard Parts

A&G is an approved manufacturer of aerospace 'AS' type fittings both in stainless steel and aluminium. In order to manufacture these flight critical components the company had to pass specific aerospace audits and qualification testing.



Supplying in high or low volume A&G offer a unique proven process that over the years has delivered on time and in full often exceeding customer delivery expectations.

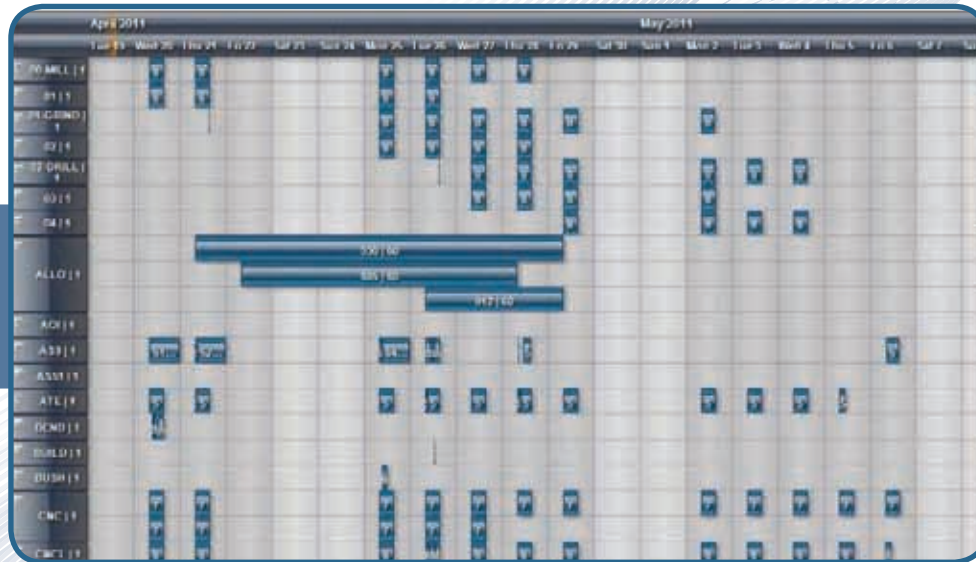
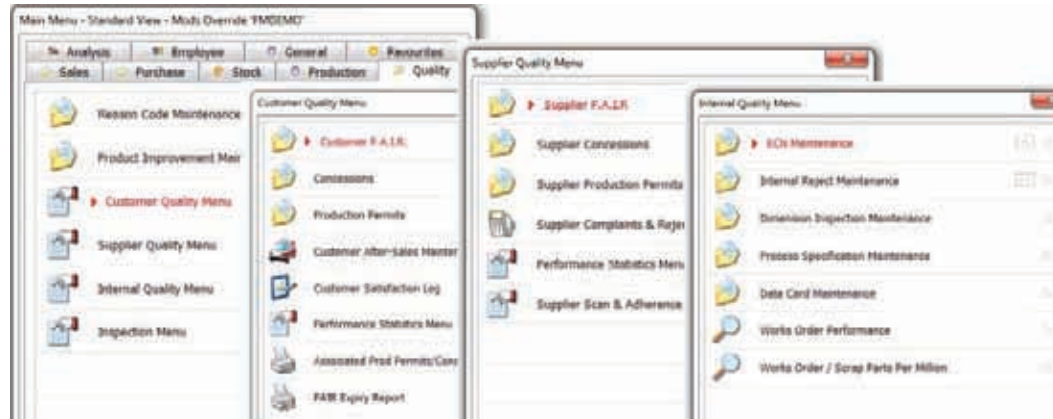


# Production Control

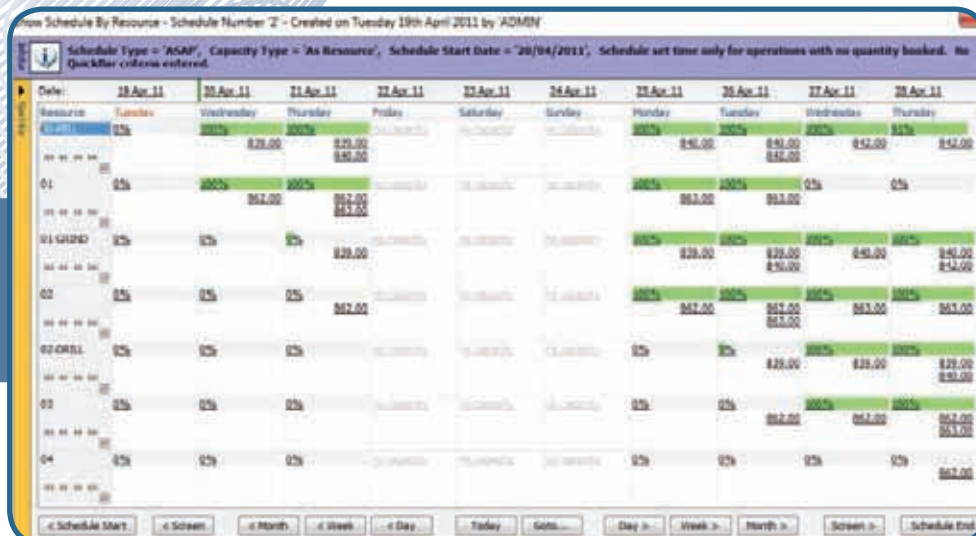
## MRP System

A&G's Factory Master is a quick and reliable production control system providing comprehensive tracking of all orders from quotation to delivery. All processes from the issue of material through machining, treatments to final inspection are closely recorded and monitored to ensure complete traceability.

With all manufacturing activities being monitored in 'Real Time' this MRP system provides complete control of customers orders ensuring on time deliveries.



Capacity Planning



Production Schedule

## Process Flows

For all stages of supply the A&G processes have been documented in the form of 'Process Flows'. These identify the process inputs and outputs, together with the materials and equipment required, the supporting documentation and performance indicators.



**KEY PERFORMANCE INDICATORS**

Treatment Deliveries

Average Monthly Deliveries - Days

YTD Average - Days

Month	Jan-12	Feb-12	Mar-12	Apr-12	May-12	Jun-12	Jul-12	Aug-12	Sep-12	Oct-12	Nov-12	Dec-12
Average Monthly Deliveries - Days	8.0	8.0	8.0	8.0	8.0	8.0	8.0	8.0	8.0	8.0	8.0	8.0
YTD Average - Days	8.0	8.0	8.0	8.0	8.0	8.0	8.0	8.0	8.0	8.0	8.0	8.0

**Performance Indicator**

- 1. Material Deliveries: On Time in Full Material Deliveries - Target 95%
- 2. Treatment Deliveries: On Time in Full Treatment Deliveries - Target 95%
- 3. A&G Supplier Rejects: A&G Supplier Rejects - Target < 1 Per Month



## Equipment Capabilities and Scope

Contained in a modern factory environment A&G has a manufacturing capability and scope which includes;

- 7 axis sliding head CNC lathes
- 3,4 & 5 axis machining centres with up to 2 metre capacity
- CNC turning cells
- Sub assembly manufacture
- Reverse engineering capability
- Prototype manufacture
- Rate manufacturing build to print in a range of materials including Aluminium,

Stainless Steel, Titanium, Inconel, Nylon & Phenolics.

- Product range covering small intricate items through to complex multi-faceted precision components, high Volume batch work to one off prototypes
- Temperature controlled inspection facilities with modern CMM capability.
- Full ERP capability with dedicated to customer order book managers who ensure customer requirements are fully understood and achieved.

### 7 Axis Sliding Head



### 3, 4, & 5 Axis CNC Machining



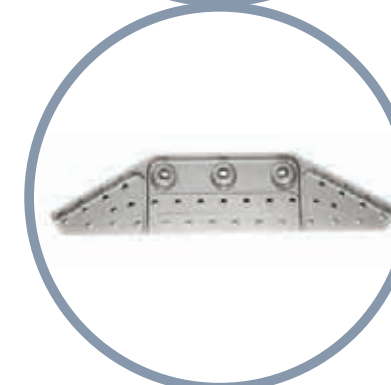
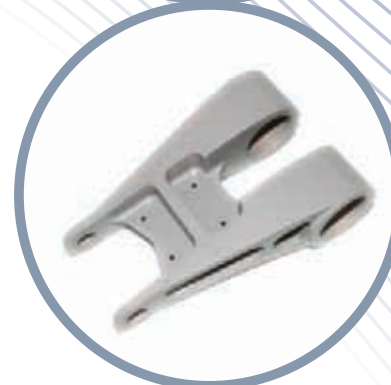
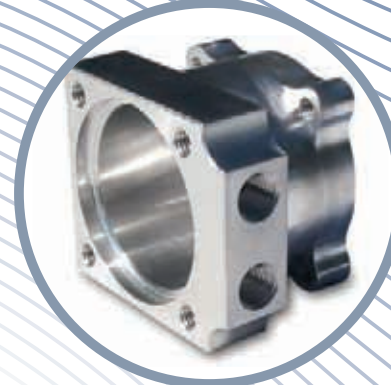
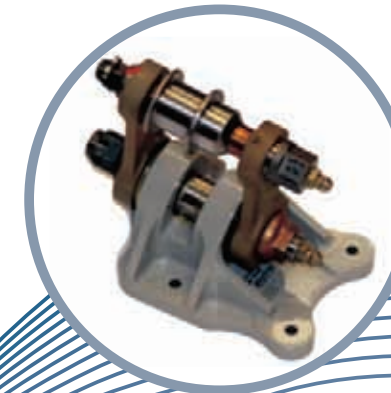
### Twin Pallet & Machining up to 2 Metres Capacity



### Twin Spindle CNC Turn / Mill



## Complete Machining Solution





## Contact Details



**Arthur Pinder**  
Managing Director  
[arthur.pinder@agprecision.co.uk](mailto:arthur.pinder@agprecision.co.uk)



**Scott Pinder**  
Company Director  
[scott.pinder@agprecision.co.uk](mailto:scott.pinder@agprecision.co.uk)



**Michael Pinder**  
Company Director  
[michael.pinder@agprecision.co.uk](mailto:michael.pinder@agprecision.co.uk)



**Wayne Richardson**  
Company Director  
[wayne.richardson@agprecision.co.uk](mailto:wayne.richardson@agprecision.co.uk)



**Andy Cash**  
Business Development Executive  
[andy.cash@agprecision.co.uk](mailto:andy.cash@agprecision.co.uk)



**Ian Walsh**  
Senior Sales Executive  
[ian.walsh@agprecision.co.uk](mailto:ian.walsh@agprecision.co.uk)



**Steve Crew**  
Head of Quality  
[steve.crew@agprecision.co.uk](mailto:steve.crew@agprecision.co.uk)



**Stuart Rothwell**  
Quality Manager  
[stuart.rothwell@agprecision.co.uk](mailto:stuart.rothwell@agprecision.co.uk)



**Anne Irving**  
Accounts Manager  
[accounts@agprecision.co.uk](mailto:accounts@agprecision.co.uk)



A&G Precision and Sons Ltd  
Preesall Mill  
Park Lane  
Poulton-Le-Fylde  
Lancashire  
FY6 0LU