



Our *passion* is enclosures.

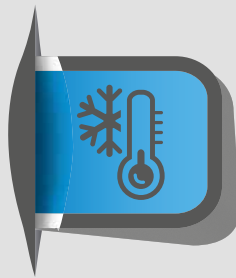
Robust ROLEC enclosures

ROLEC technoPLUS

The PLUS in any environment.



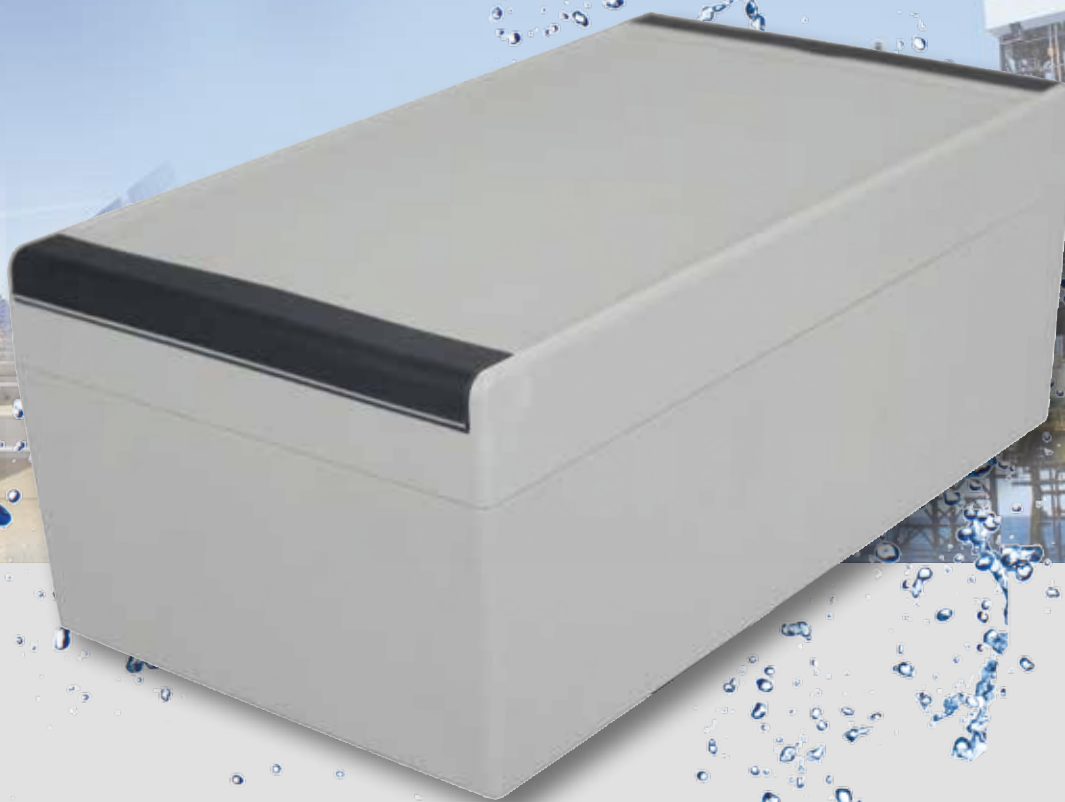
ROLEC Simply better.



ROLEC's initiative for every environment

Sun, rain, cold, snow or wind: only enclosures specially designed for these conditions will resist.

ROLEC's **technoPLUS** enclosures do - under most diverse conditions.



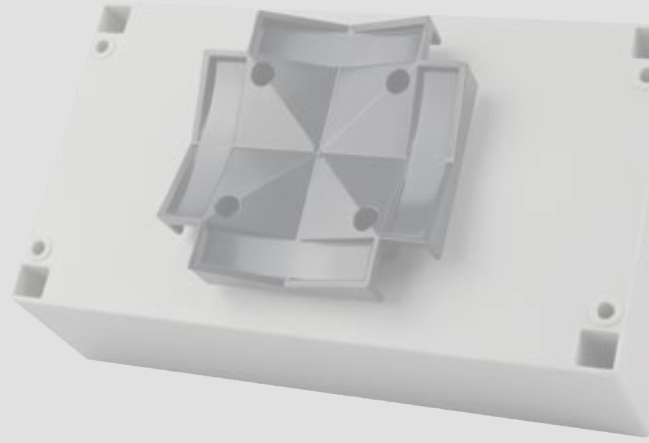
Thermoplastic enclosures - sturdy and weatherproof

technoPLUS enclosures with the special benefits. They have the sophisticated ROLEC design features. The enclosure walls are extra thick, in order to ensure a high degree of stability and sturdy threads. LURAN is a material which resists exterior influences and UV radiation.

ROLEC technoPLUS

Sturdy ROLEC enclosures.

Further development in plastic.



Overview of details



Integrated recesses for membrane keypads



Enclosure fastening with closed lid



Design covers for the perfect look



Integrated lid supports



Mounting domes for self-grooving screws in the lid and the bottom



Optional mast attachment

The task: to supply non metallic enclosures to protect contained electronics. Inside, fulfilling particularly high demands towards general solidity and stability. Outside through especially robust design to assure general weather protection.

The solution: technoPLUS. This enclosure has extra thick walls. This means extra stability and material assuring that boreholes and threads will be stable. The used LURAN material is highly resistant against UV radiation and has proven to be extremely weatherproof. This material will resist

solar irradiation much longer than other plastics. Lid gaskets are made of high quality silicone, which is resistant against most media. Stainless steel lid screws.

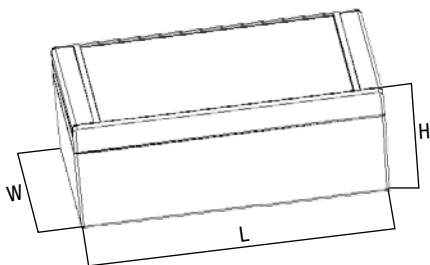
Special features: only ROLEC provides the benefits of technoPLUS enclosures: separate attachment levels for enclosures and lid fastenings. Enclosures may be mounted with closed lids. Including sturdy lid supports. Hiding fastening planes after mounting by means of new, captive design covers. Integrated recesses for membrane keypads.



Delivery overview technoPLUS*

Type	Mat.-No	L	W	H	D	E	g	M	EMV	MH	T	ID	PLUS
TP090	290.090.000	130	90	70	112	44	260	●	●	●	●	□	●
TP092	290.092.000	180	90	70	162	44	330	●	●	●	●	□	●
TP112	290.112.000	160	110	70	142	64	340	●	●	●	●	□	●
TP132	290.132.000	230	130	90	212	84	580	●	●	●	●	□	●
TP172	290.172.000	270	170	90	252	124	760	●	●	●	●	□	●

□ Standard ● Available ○ Not available



Mounting dimensions

*available from middle of 2013

Technical data

Enclosure

ASA LURAN, UV stabilized:
2° mould slope for casting
ejection, internal measures
diminishing circulatory towards
enclosure bottom by 2°.

Integrated recess

1.7 mm recess in the lid for
membrane keypad or front
plates.

Internal mounting

Attachment webs in the bottom
section and attachment domes
in the top section ensure
secure fastening of installed
components.

Mast attachment (optional)

ASA LURAN, UV stabilized
RAL 7016, anthracite grey

Ingress protection

IP 66 / EN 60529
IP 67 / EN 60529 (Optional)

Gasket

Silicone-gasket
(-50°C to +140°C)
EMC-gasket (optional)
(-55°C to +160°C)

Lid screws

Stainless steel 1.4567 (V2A),
captive

Integrated lid supports

Polypropylene (PP), RAL 7040,
window grey

Design covers

latching, polypropylene (PP)
in RAL 7016, anthracite grey

Surface

RAL 7035, light grey



M

Mounting plates



EMV

Shielding



MH

Mast attachment



MB

Mast tie strap *



T

Supporting rails
for terminal blocks



ID

Integrated lid
supports



PLUS

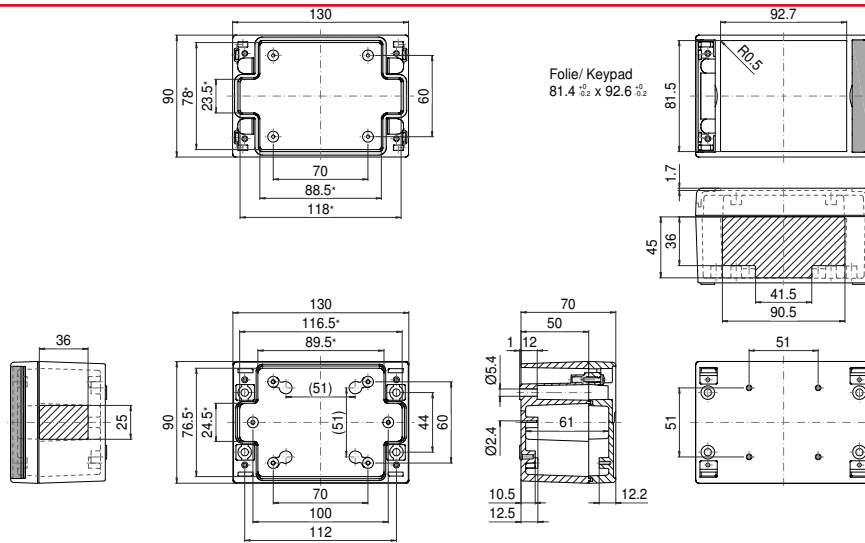
Ingress
protection IP 67

* On request

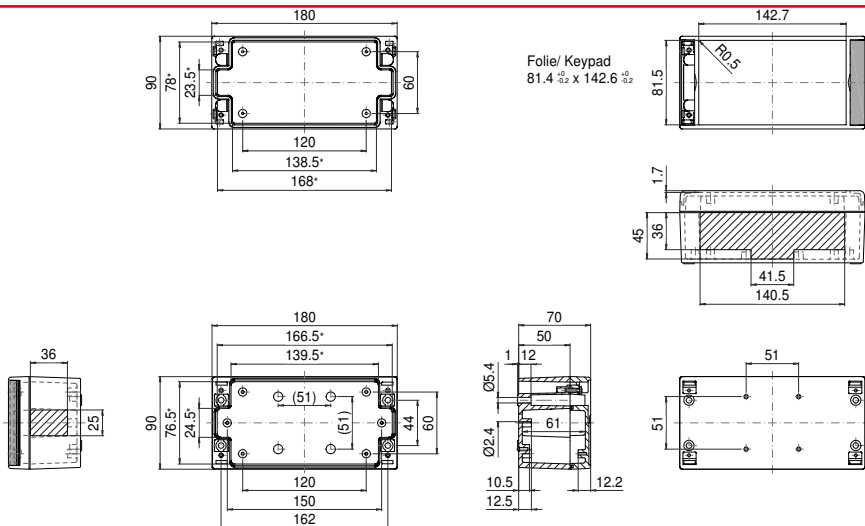
ROLEC Attachment and mounting dimensions

technoPLUS

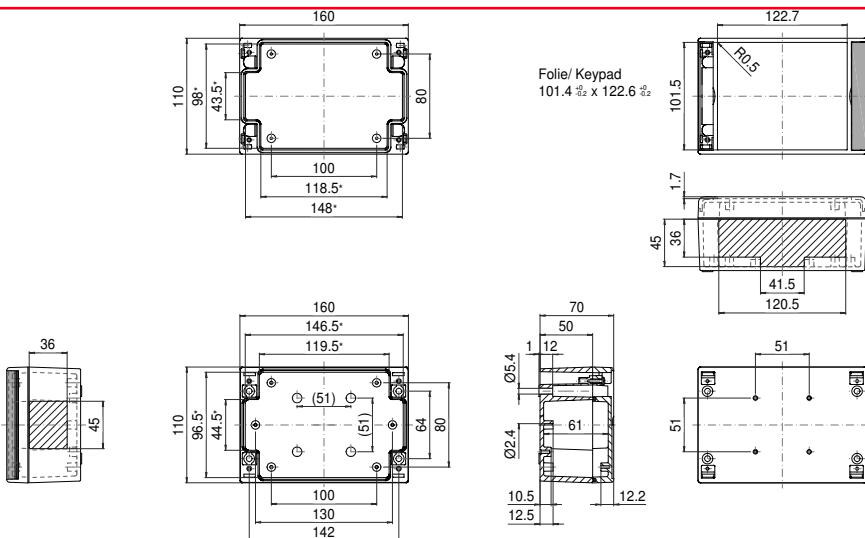
TP 090



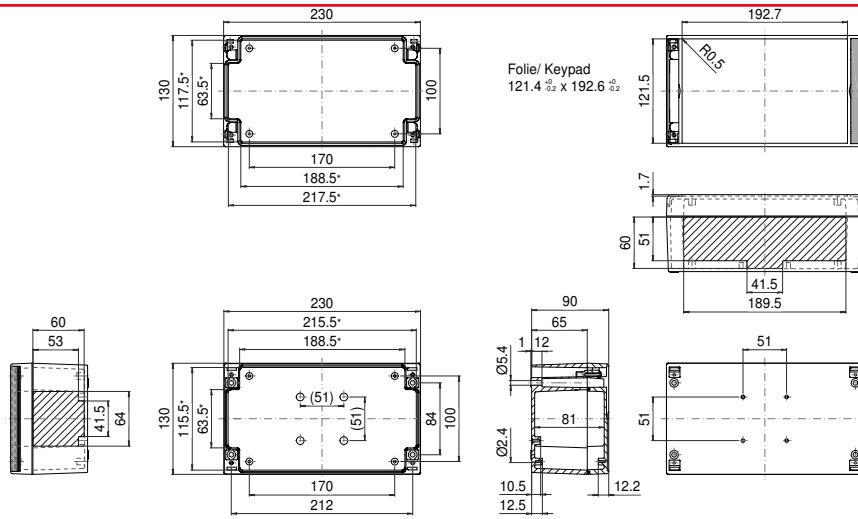
TP 092



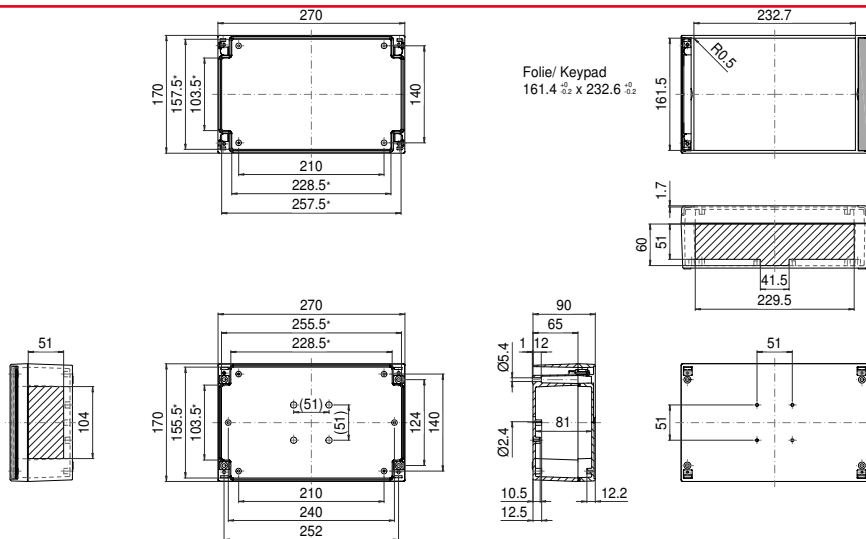
TP 112



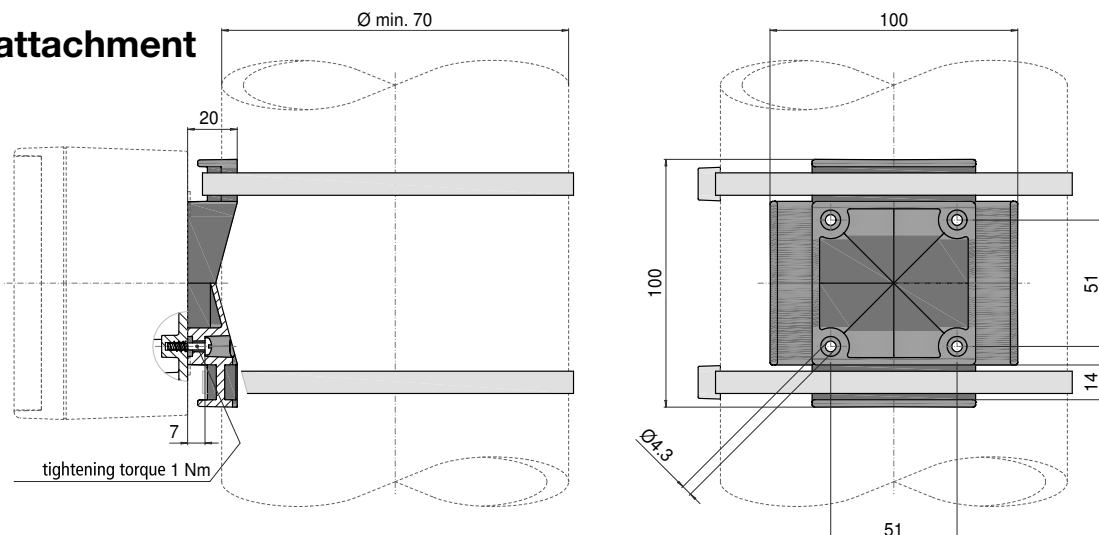
TP 132



TP 172



Mast attachment





Our *passion* is enclosures.

Just-in-time. Ready for installation.

- Drilled.
- Milled.
- Engraved.
- Printed.
- Powder coated.
- Wet painted.
- Equipped.
- Assembled.
- Delivered.

ROLEC
Gehäuse-Systeme GmbH
Kreuzbreite 2
31737 Rinteln

Fon +49 (0) 57 51/ 40 03-0
Fax +49 (0) 57 51/ 40 03-50

info@rolec.de
www.rolec.de

