



Our *passion* is enclosures.

Industrial electronic enclosures from stainless steel.

ROLEC inoCASE.
Quality without compromise.



ROLEC®. Simply better.



ROLEC inoCASE + inoCASEmini – the new benchmark for industrial electronic enclosures from stainless steel.

ROLEC is proud to be leading the development and application of new enclosure concepts. The founders of the company, Friedhelm and Matthias Rose, are pioneers of enclosure technology. They possess decades of experience in the industry.

They have repeatedly succeeded in setting new benchmarks in the further development of familiar enclosure systems for the optimum packaging of modern industrial electronics.

Extensive customer benefits and an advantageous design have always been the most important objectives.

Enclosures from rustproof stainless steel were previously not part of the ROLEC delivery program. However, experiments with this sophisticated material have been taking place for many years.

We did not find a product that met with our expectations for enclosures from stainless steel for the installation of modern industrial electronics. Enclosures from stainless steel are still fastened with holes in the enclosure base. Users are exposed to risk of leaks and damage to components.

The single-channel fastening system - proven millions of times over - employed with the aluNORM enclosure range from aluminium has been adapted for the A2 enclosure: Four welded screw channels in the enclosure corners. The A4 version has separate fastening channels.

inoCASE A2

enclosures obtain an aesthetically pleasing, high gloss surface that is even more resistant to corrosion due to alternative „electropolishing“.



Enclosures from stainless steel - when corrosion-resistance matters!

ROLEC has carried out detailed corrosion and leak-tightness tests and had these verified by independent test centres.

4301/A2 is the world's most commonly used rustproof stainless steel material. Internationally, this quality predominantly bears the designation „304“, the material used in the standard version of the new ROLEC inoCASE enclosure.



ROLEC inoCASE A2
Space-saving single-channel lid and assembly fastening, outside the enclosure interior.



ROLEC inoCASEmini A2
Space-saving single-channel lid and assembly fastening, outside the enclosure interior.



Conventional manufacturers
Fastening of the enclosure with through-holes in the base (inside the enclosure) or external lugs.

inoCASE A4

The inoCASE enclosure in material quality A4 exists for the maximum demands applicable in the pharmaceutical / process control engineering / foodstuffs sectors and other areas.



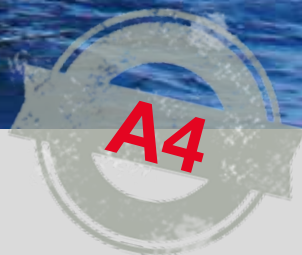
ROLEC inoCASE A4
Assembly with separate fastening channels.



ROLEC inoCASEmini A4
Assembly with separate fastening channels.



ROLEC inoCASEmini
Stainless steel enclosure, standard and electropolished.



ROLEC inoCASE + inoCASEmini – in chlorine-resistant A4 stainless steel. For every environment.

4404 / A4 internationally customarily designated „316L“, is even more resilient. This alloy contains molybdenum for the further enhancement of corrosion resistance, in particular to chloride and seawater.

Applications in areas close to the coast frequently demand the use of higher types of alloys. The marine atmosphere contains components including chloride, which precipitate

on stainless steel parts due to moisture in the air. When the moisture evaporates, salt is left behind and this becomes concentrated due to constant deposition.

Interesting is that parts protected against rain are at particular risk of corrosion in marine areas because the unavoidable deposits are neither diluted nor washed away by rain.

Smooth surfaces prevent corrosion

In addition to the right alloy, the surface characteristics also have a decisive influence on the corrosion resistance. Optimum protection in coastal areas is afforded by clean, bright metallic surfaces that are fully passivated.

ROLEC offers electropolishing as an option with the new inoCASE enclosure. With this process the roughened surface is electrochemically removed.

This results in a highly polished top surface, closed in the micro range and with a new, seamless passive layer. This not only prevents corrosion but also decisively improves the appearance of the enclosure.

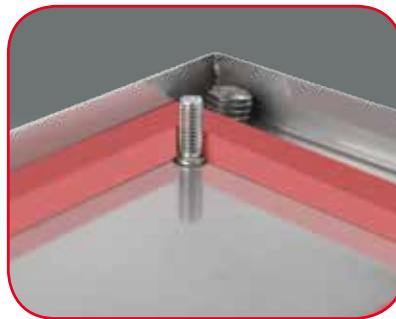
ROLEC inoCASE. 4301 / A2 stainless steel.



Details at a glance



Space-saving single-channel lid and assembly fastening, outside the enclosure interior.



Silicone profile gasket glued into the lid.



Fastening lugs in the enclosure bottom for components.

Processing of standard sizes

All types of processing can be carried out economically with standard sizes on our own „3D“ CNC laser processing centre.

Special sizes

Individual special sizes can be supplied on customer request from 50 units.

Cable glands

Metric cable glands and pressure equalisation elements are available from stock.



Technical data A2

Enclosure

Stainless sheet steel, edged and welded

Alloy 1.4301 (AISI 304) V2A, sheet thickness 1.25mm

Lid screws

Stainless steel (V4A), captive, allen screw

Temperature range

- 40°C to + 80°C

Fastening

Space-saving single-channel technology

Ingress protection

IP 66 EN 60529

Components

Fastening thread M5 in the enclosure bottom

Earthing bolt M5 in the lid

Gasket

Silicone flat gasket

Surface

Polished, grain: 320

Upon inquiry:

Mounting plates

Stainless steel 1.4301

Supporting rails

Stainless steel 1.4301

Ingress protection

IP67 / EN 60529

Surface

Electropolished special coating

ROLEC inoCASEmini. 4301 / A2 stainless steel.



Details at a glance



Space-saving single-channel lid and assembly fastening, outside the enclosure interior.



Silicone gasket glued into the lid, stamped.



Fastening lugs in the enclosure bottom for components.

Processing of standard sizes

All types of processing can be carried out economically with standard sizes on our own „3D“ CNC laser processing centre.

Special sizes

Individual special sizes can be supplied on customer request from 50 units.

Cable glands

Metric cable glands and pressure equalisation elements are available from stock.

Technical data A2mini

Enclosure

Stainless sheet steel, edged and welded

Alloy 1.4301 (AISI 304) V2A, sheet thickness 1.25mm

Lid screws

Stainless steel (V4A), captive, allen screw

Temperature range

- 40°C to + 80°C

Fastening

Space-saving single-channel technology

Ingress protection

IP 66 EN 60529

Components

Fastening thread M4 in the enclosure bottom

Earthing bolt M4 in the lid

Gasket

Silicone flat gasket

Surface

Polished, grain: 320

Upon inquiry:

Mounting plates

Stainless steel 1.4301

Supporting rails

Stainless steel 1.4301

Ingress protection

IP67 / EN 60529

Surface

Electropolished special coating



ROLEC inoCASE. 4404 / A4 stainless steel.



Details at a glance



Separate fastening channels.



Silicone profile gasket glued into the lid.



Fastening lugs in the enclosure bottom for components.

Processing of standard sizes

All types of processing can be carried out economically with standard sizes on our own „3D“ CNC laser processing centre.

Special sizes

Individual special sizes can be supplied on customer request from 50 units.

Cable glands

Metric cable glands and pressure equalisation elements are available from stock.



Technische Daten A4

Enclosure

Stainless sheet steel, edged and welded

Alloy 1.4404 (AISI 316L) V4A, sheet thickness 1.25mm

Lid screws

Stainless steel (V4A), captive, allen screw

Temperature range

- 40°C to + 80°C

Fastening

Separate fastening channels

Ingress protection

IP 66 EN 60529

Components

Fastening thread M5 in the enclosure bottom

Earthing bolt M5 in the lid

Gasket

Silicone flat gasket

Surface

Polished, grain: 320

Upon inquiry:

Mounting plates

Stainless steel 1.4404

Supporting rails

Stainless steel 1.4404

Ingress protection

IP67 / EN 60529

Surface

Electropolished special coating

ROLEC inoCASEmini. 4404 / A4 stainless steel.



Details at a glance



Separate fastening channels.



Silicone profile gasket glued into the lid.



Fastening lugs in the enclosure bottom for components.

Processing of standard sizes

All types of processing can be carried out economically with standard sizes on our own „3D“ CNC laser processing centre.

Special sizes

Individual special sizes can be supplied on customer request from 50 units.

Cable glands

Metric cable glands and pressure equalisation elements are available from stock.

Technische Daten A4mini

Enclosure

Stainless sheet steel, edged and welded

Alloy 1.4404 (AISI 316L) V4A, sheet thickness 1.25mm

Lid screws

Stainless steel (V4A), captive, allen screw

Temperature range

- 40°C to + 80°C

Fastening

Separate fastening channels

Ingress protection

IP 66 EN 60529

Components

Fastening thread M5 in the enclosure bottom

Earthing bolt M5 in the lid

Gasket

Silicone flat gasket

Surface

Polished, grain: 320

Upon inquiry:

Mounting plates

Stainless steel 1.4404

Supporting rails

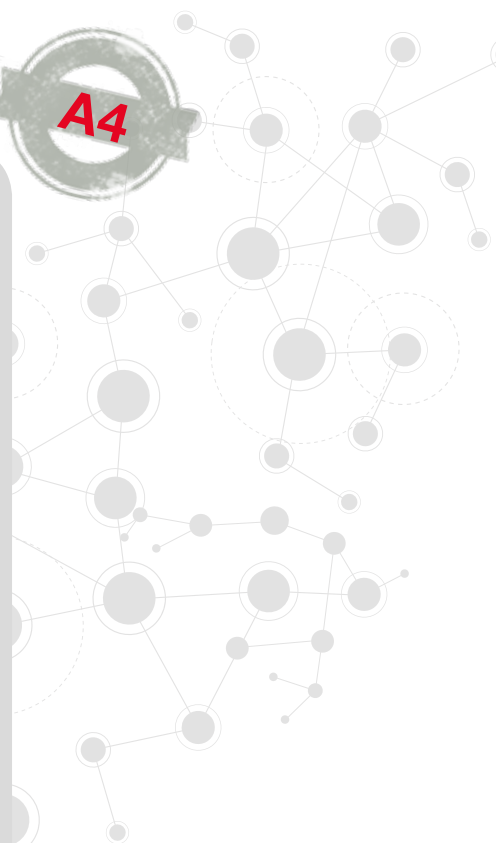
Stainless steel 1.4404

Ingress protection

IP67 / EN 60529

Surface

Electropolished special coating

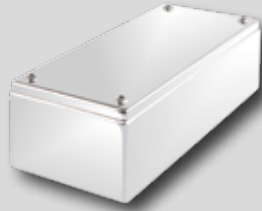


IC 070

IC 093, electropolished

IC 132

IC 300



Mounting plates



Supporting rail



PLUS Ingress protection IP 67

Delivery overview **inoCASE A2** stainless steel



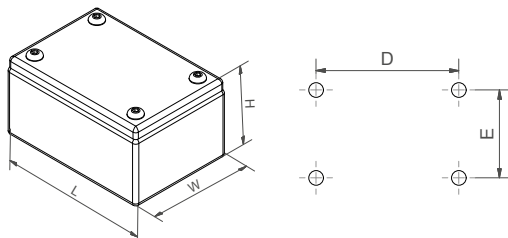
Type	Mat.-No	L	W	H	D	E	g	M	T	Plus	D	EP
IC 110	173.110.000	140	110	60	117	85	1490	●	●	●	□	●
IC 112	173.112.000	200	110	60	177	85	1716	●	●	●	□	●
IC 130	173.130.000	160	130	60	137	105	1100	●	●	●	□	●
IC 132	173.132.000	220	130	60	197	105	1358	●	●	●	□	●
ICF 150	172.150.000	180	150	60	157	125	1230	●	●	●	□	●
IC 150	173.150.000	180	150	90	157	125	1530	●	●	●	□	●
ICF 152	172.152.000	260	150	60	237	125	2029	●	●	●	□	●
IC 152	173.152.000	260	150	90	237	125	2560	●	●	●	□	●
ICF 170	172.170.000	200	170	60	177	145	2190	●	●	●	□	●
IC 170	173.170.000	200	170	90	177	145	2392	●	●	●	□	●
ICF 172	172.172.000	280	170	60	257	145	2506	●	●	●	□	●
IC 172	173.172.000	280	170	90	257	145	2839	●	●	●	□	●
IC 200	173.200.000	230	200	120	207	175	3113	●	●	●	□	●
IC 202	173.202.000	330	200	120	307	175	3792	●	●	●	□	●
IC 250	173.250.000	280	250	120	257	225	3920	●	●	●	□	●
IC 252	173.252.000	380	250	120	357	225	4702	●	●	●	□	●
IC 300	173.300.000	330	300	120	307	275	4829	●	●	●	□	●
IC 302	173.302.000	430	300	120	407	280	5711	●	●	●	□	●

Delivery overview **inoCASEmini A2** stainless steel



Type	Mat.-No	L	W	H	D	E	g	M	T	Plus	D	EP
IC 070	173.070.000	100	70	50	78	48	453	●	●	●	□	●
IC 072	173.072.000	140	70	50	118	48	551	●	●	●	□	●
IC 074	173.074.000	180	70	50	158	48	649	●	●	●	□	●
IC 090	173.090.000	120	90	60	98	68	635	●	●	●	□	●
IC 092	173.092.000	160	90	60	138	68	757	●	●	●	□	●
IC 093	173.093.000	200	90	60	178	68	879	●	●	●	□	●

□ Standard ● Available ○ Not available



ICC 072

ICC 090

ICC 152

ICC 172, electropolished



D Silicone gasket



EP

Electropolishing

Delivery overview **inoCASE A4** stainless steel



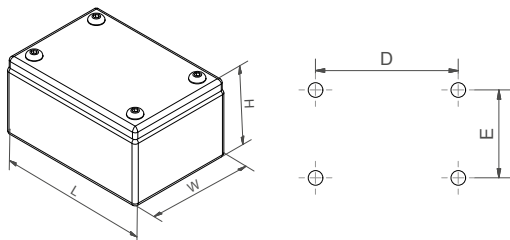
Type	Mat.-No	L	W	H	D	E	g	M	T	Plus	D	EP
ICC 110	175.110.000	140	110	60	120	90	1020	●	●	●	□	●
ICC 112	175.112.000	200	110	60	180	90	1180	●	●	●	□	●
ICC 130	175.130.000	160	130	60	140	110	1100	●	●	●	□	●
ICC 132	175.132.000	220	130	60	200	110	1358	●	●	●	□	●
ICCF 150	174.150.000	180	150	60	160	130	1230	●	●	●	□	●
ICC 150	175.150.000	180	150	90	160	130	1530	●	●	●	□	●
ICCF 152	174.152.000	260	150	60	240	130	2029	●	●	●	□	●
ICC 152	175.152.000	260	150	90	240	130	1875	●	●	●	□	●
ICCF 170	174.170.000	200	170	60	180	150	1680	●	●	●	□	●
ICC 170	175.170.000	200	170	90	180	150	1750	●	●	●	□	●
ICCF 172	174.172.000	280	170	60	260	150	1960	●	●	●	□	●
ICC 172	175.172.000	280	170	90	260	150	2260	●	●	●	□	●
ICC 200	175.200.000	230	200	120	210	180	2580	●	●	●	□	●
ICC 202	175.202.000	330	200	120	310	180	3260	●	●	●	□	●
ICC 250	175.250.000	280	250	120	260	230	3340	●	●	●	□	●
ICC 252	175.252.000	380	250	120	360	230	4190	●	●	●	□	●
ICC 300	175.300.000	330	300	120	310	280	4230	●	●	●	□	●
ICC 302	175.302.000	430	300	120	410	280	5210	●	●	●	□	●

Delivery overview **inoCASEmini A4** stainless steel



Type	Mat.-No	L	W	H	D	E	g	M	T	Plus	D	EP
ICC 070	175.070.000	100	70	50	80	52	380	●	●	●	□	●
ICC 072	175.072.000	140	70	50	120	52	466	●	●	●	□	●
ICC 074	175.074.000	180	70	50	160	52	550	●	●	●	□	●
ICC 090	175.090.000	120	90	60	100	72	539	●	●	●	□	●
ICC 092	175.092.000	160	90	60	140	72	630	●	●	●	□	●
ICC 093	175.093.000	200	90	60	180	72	715	●	●	●	□	●

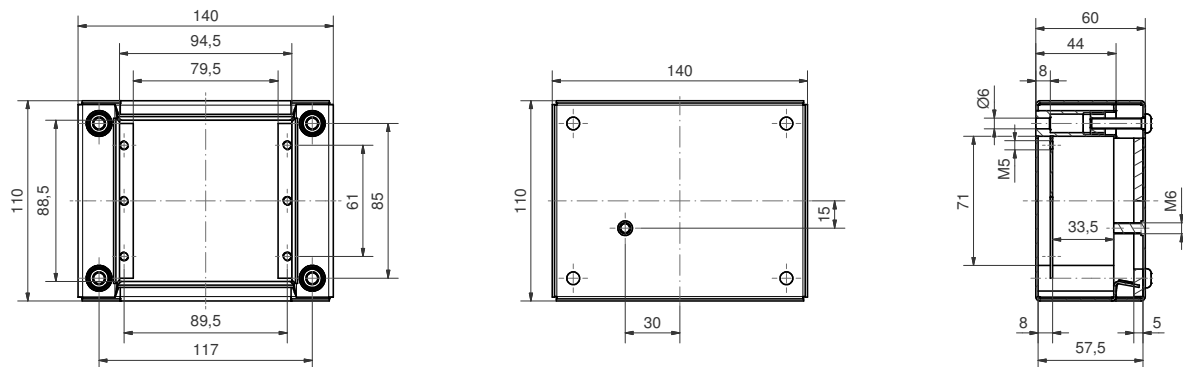
□ Standard ● Available ○ Not available



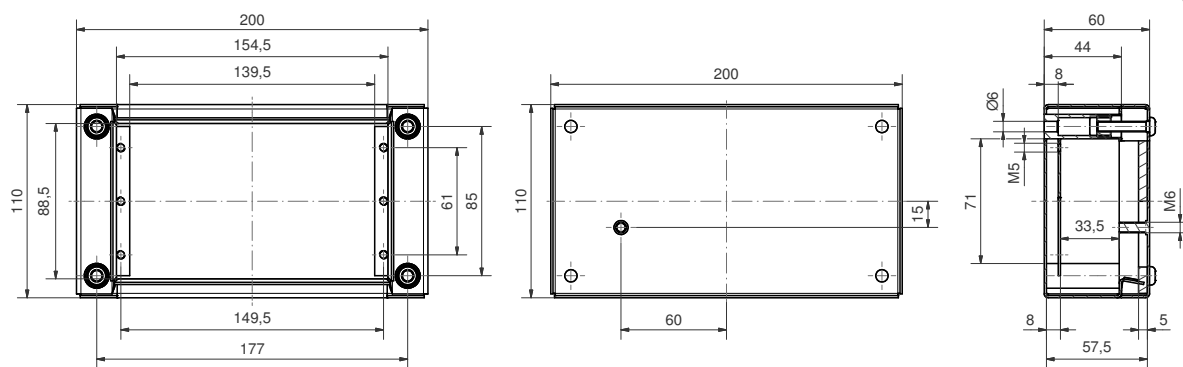
ROLEC Attachment and mounting dimensions

inoCASE A2

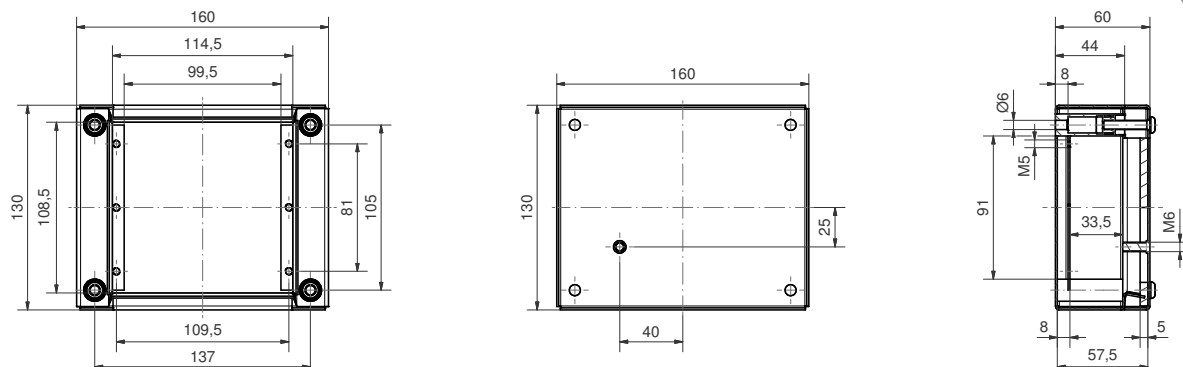
IC 110



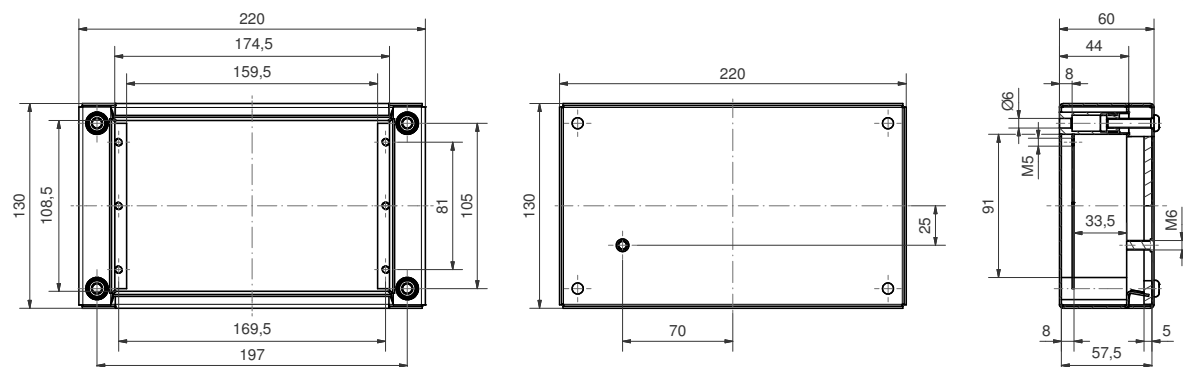
IC 112



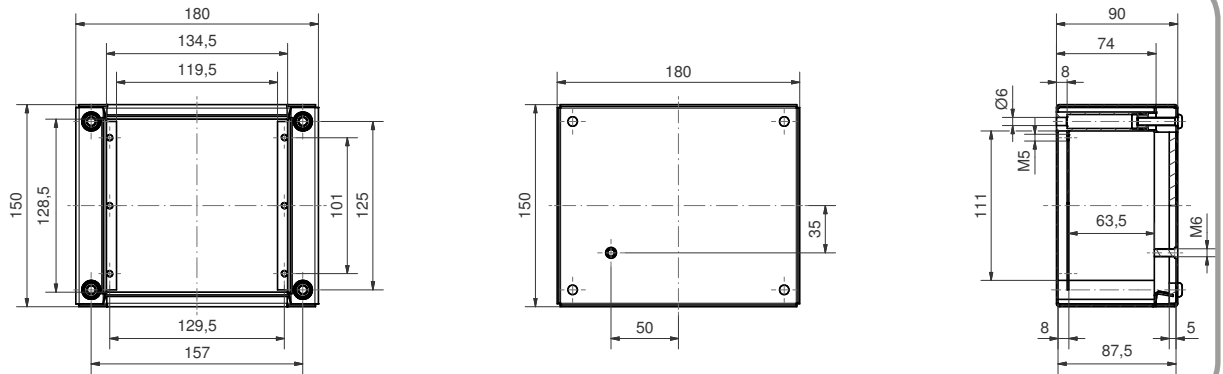
IC 130



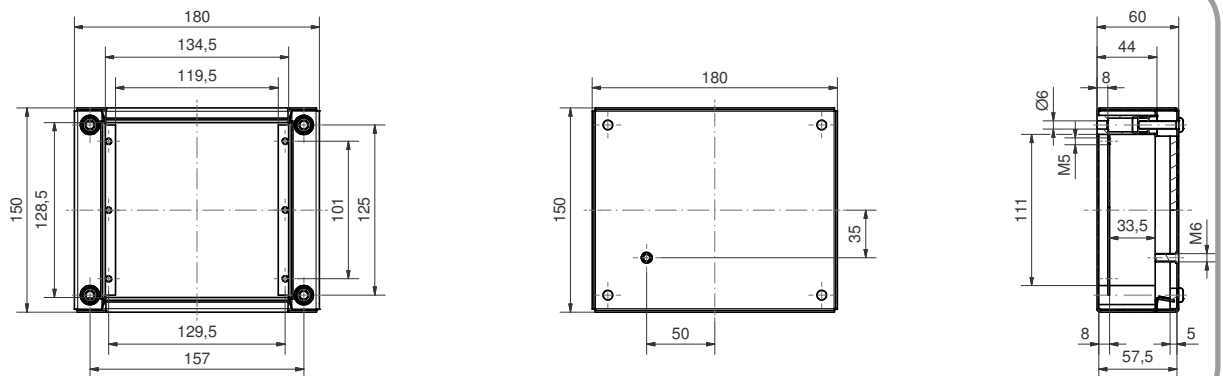
IC 132



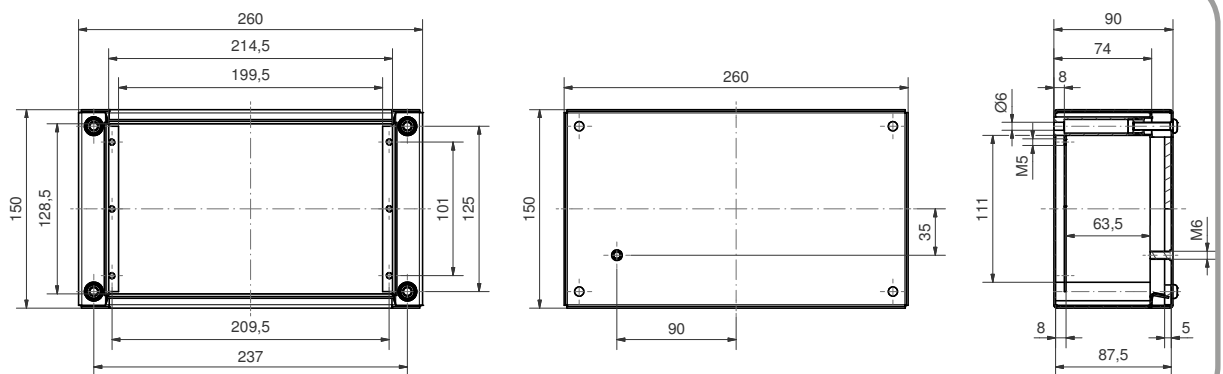
IC 150



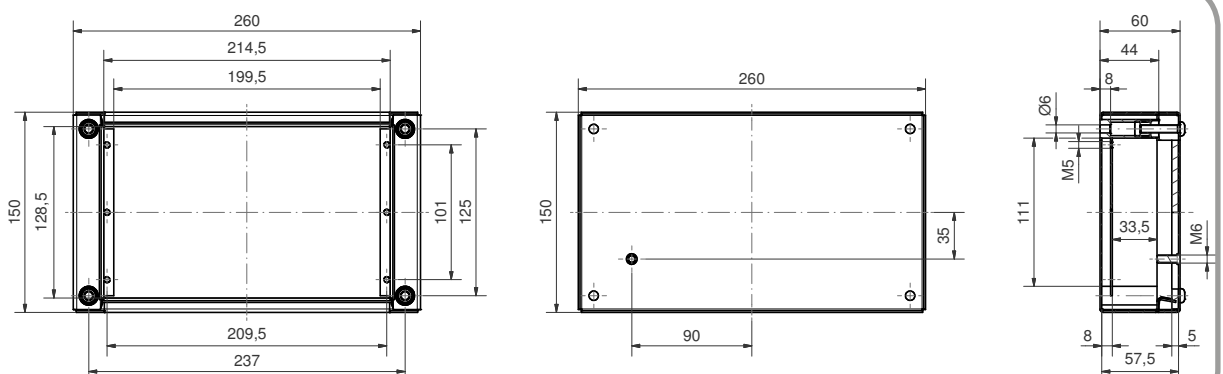
ICF 150



IC 152



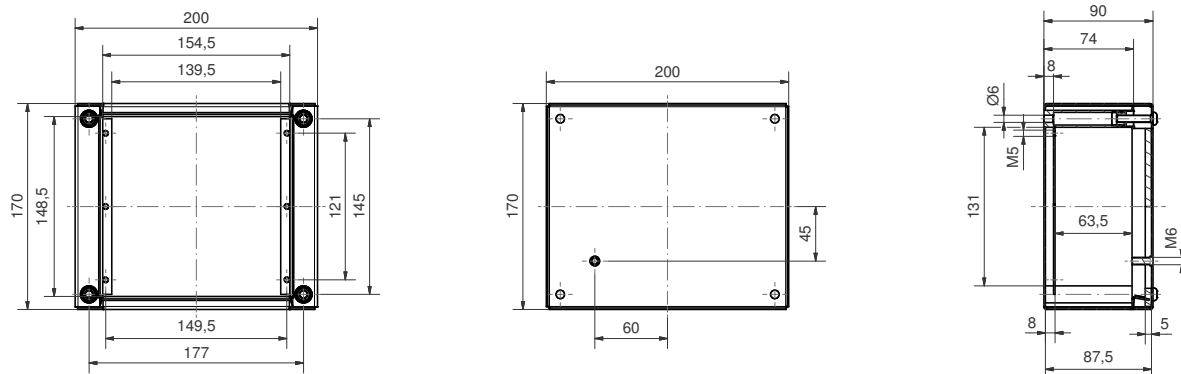
ICF 152



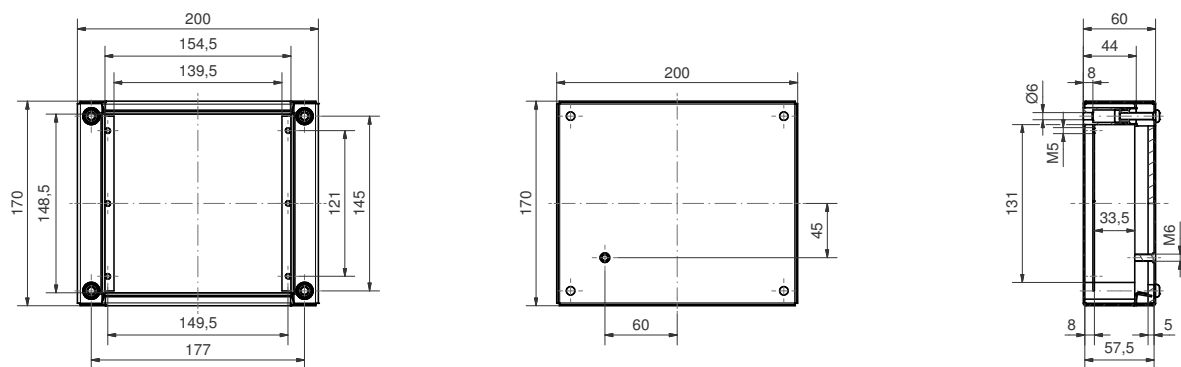
ROLEC Attachment and mounting dimensions

inoCASE A2

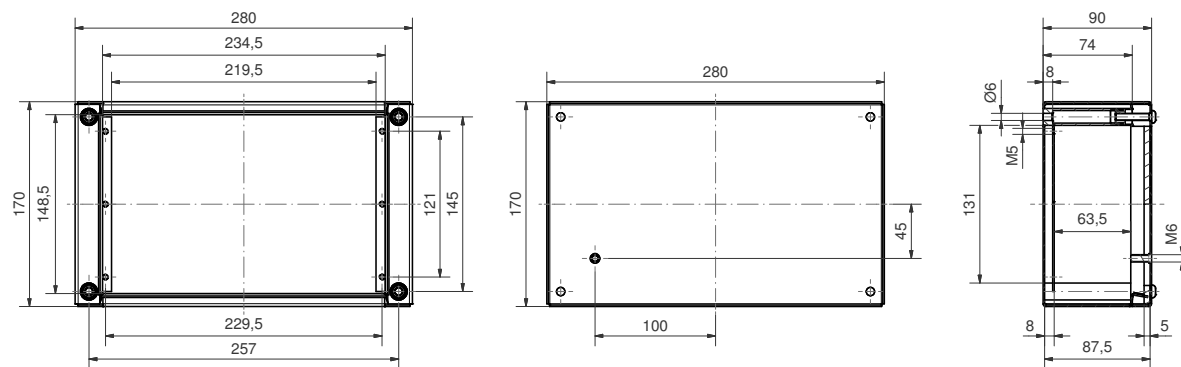
IC 170



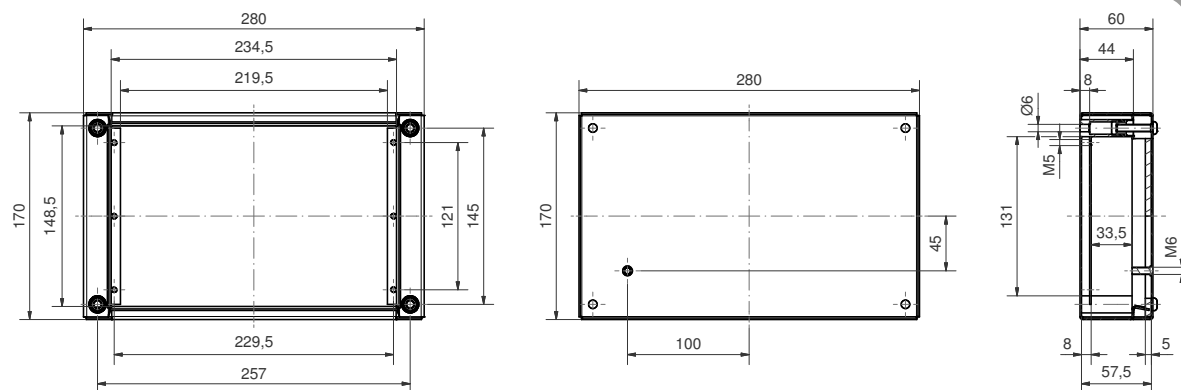
ICF 170



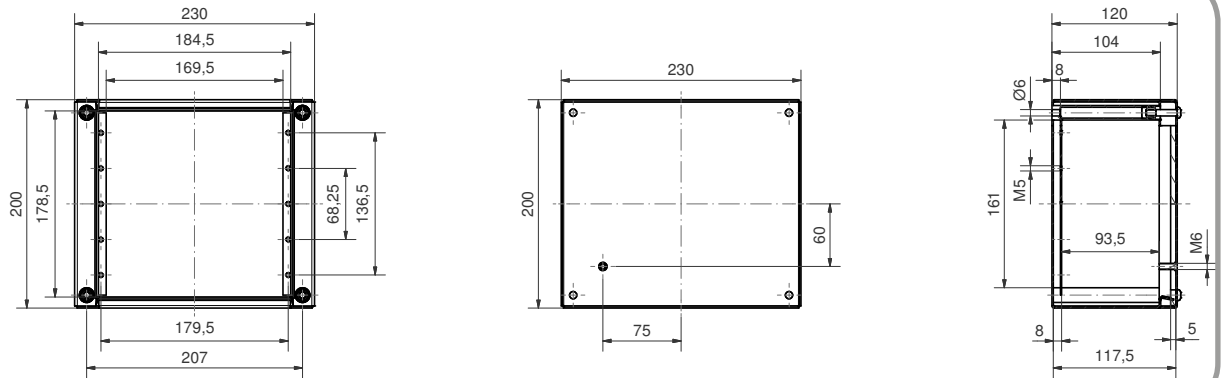
IC 172



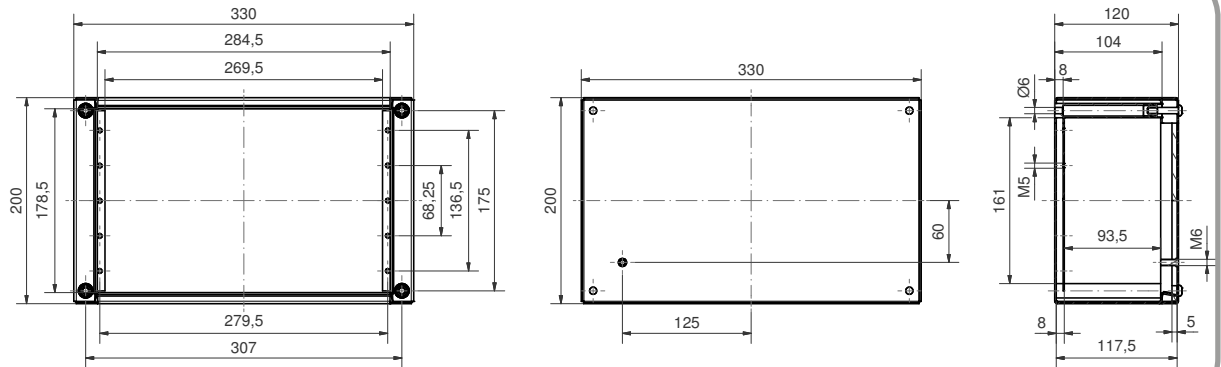
ICF 172



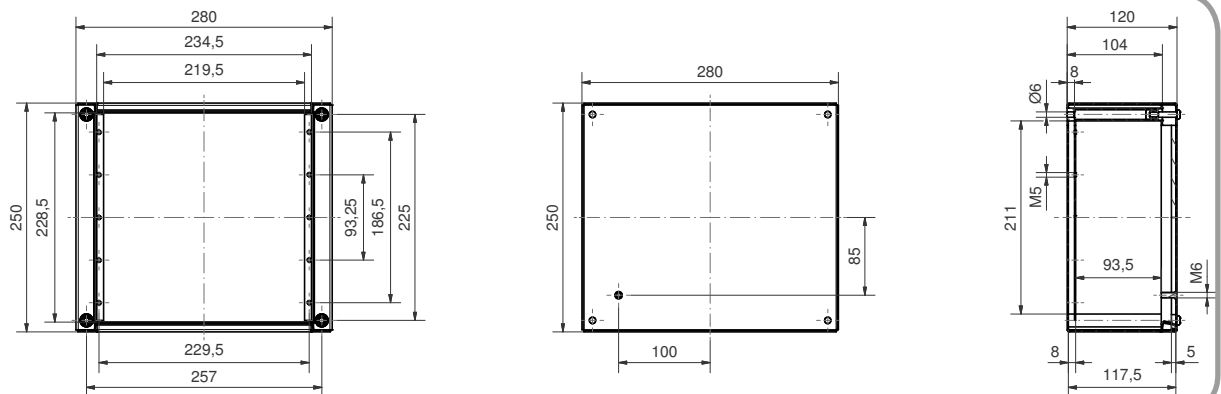
IC 200



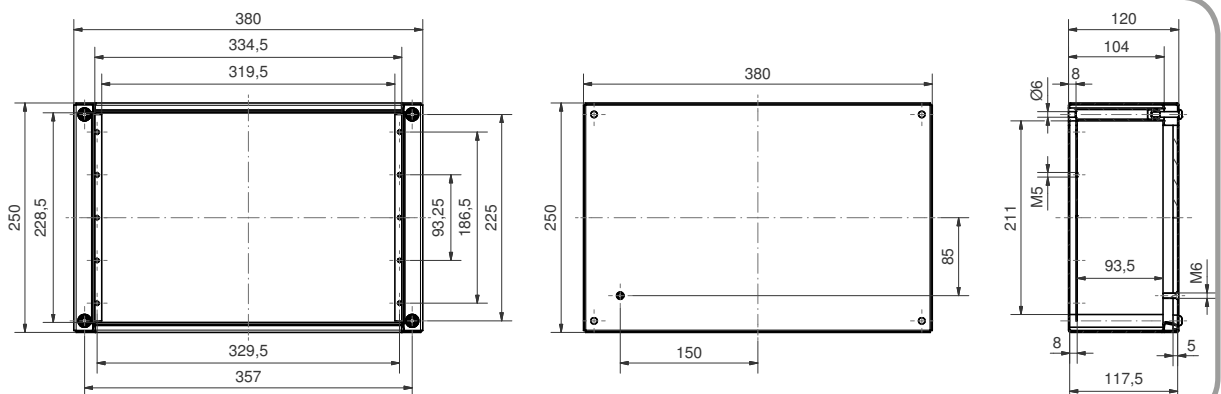
IC 202



IC 250



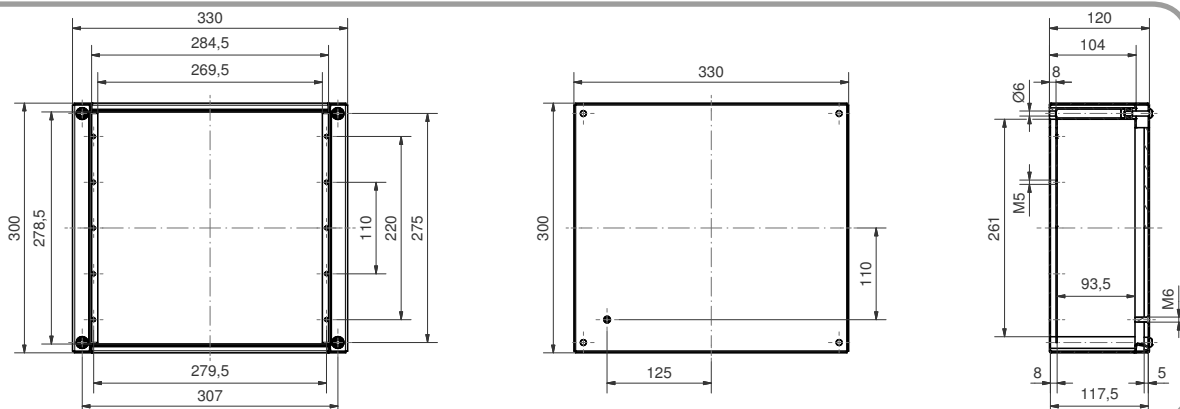
IC 252



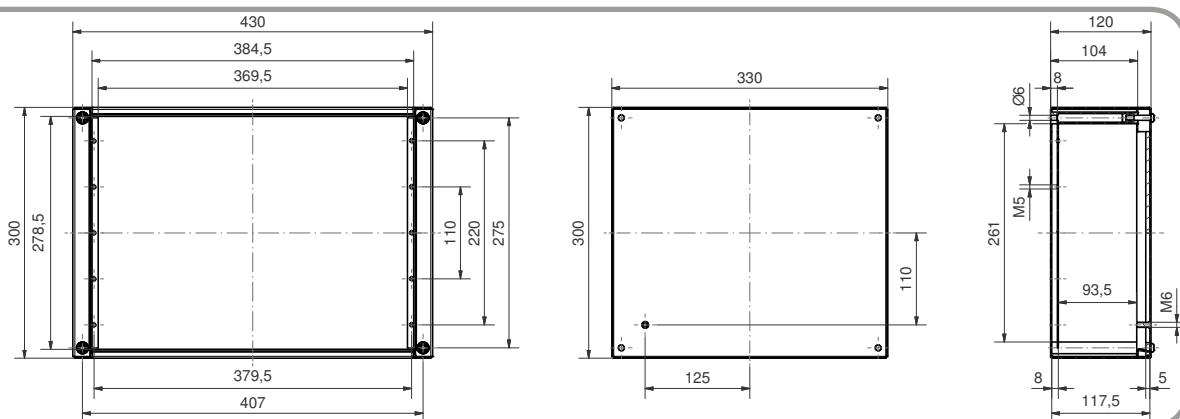
ROLEC Attachment and mounting dimensions

inoCASE A2 / inoCASEmini A2

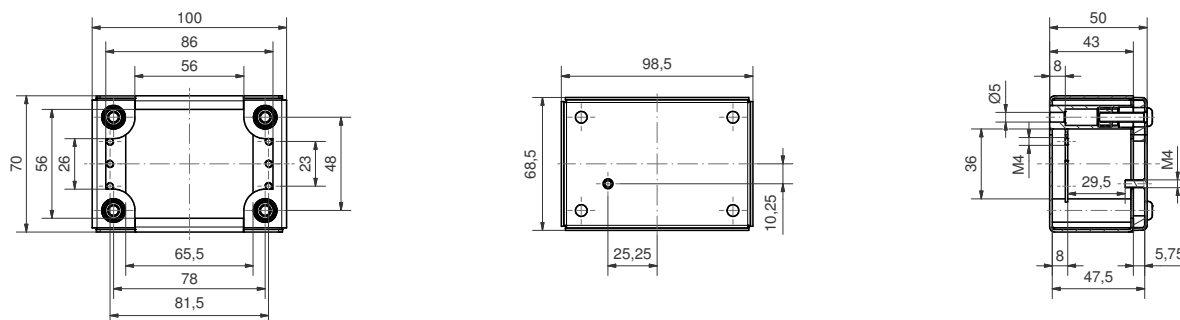
IC 300



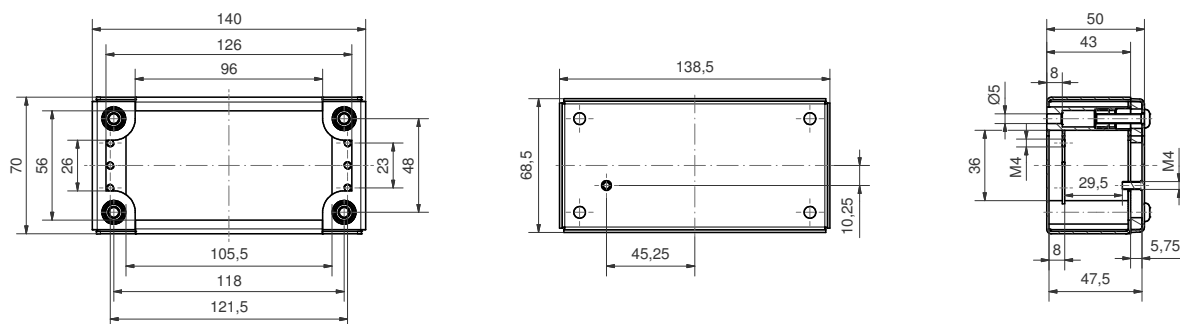
IC 302



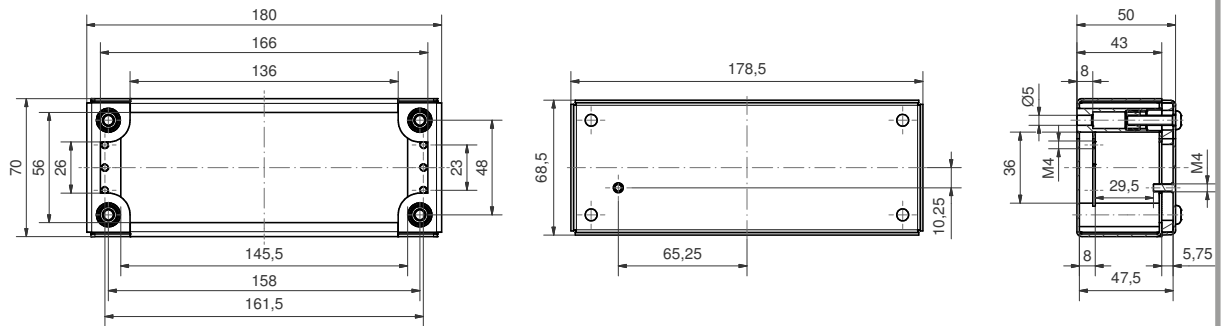
IC 070



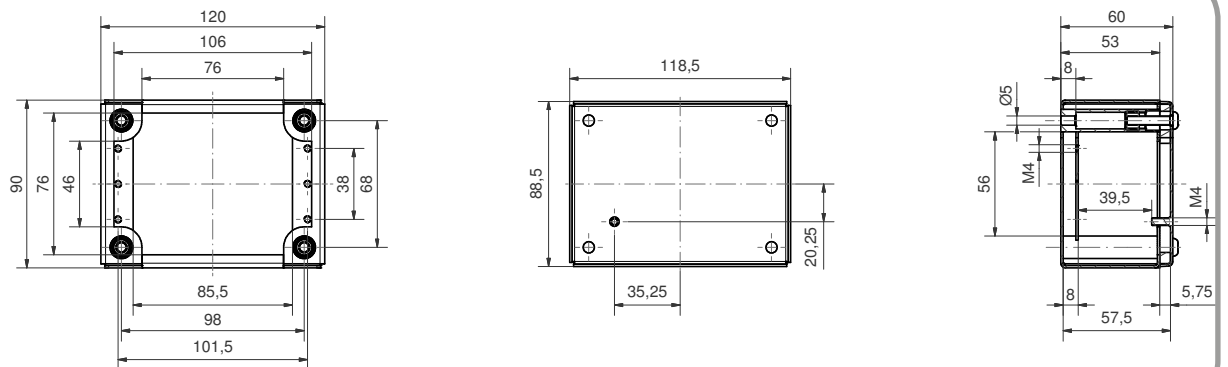
IC 072



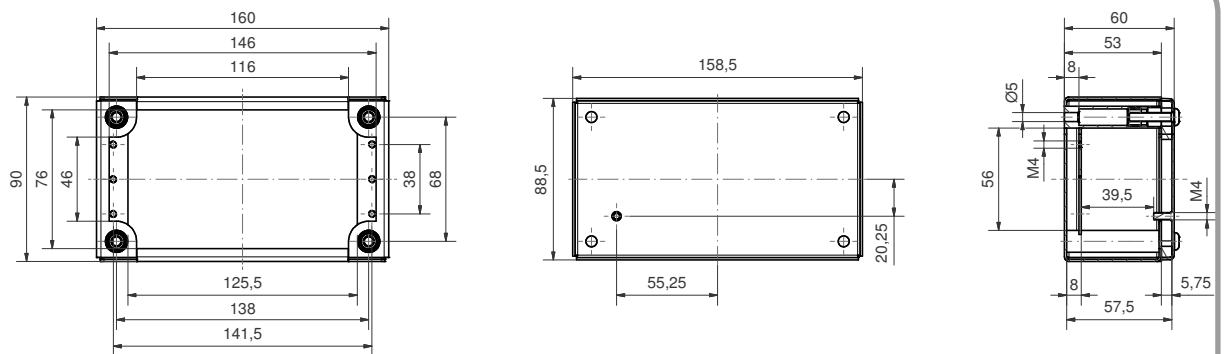
IC 074



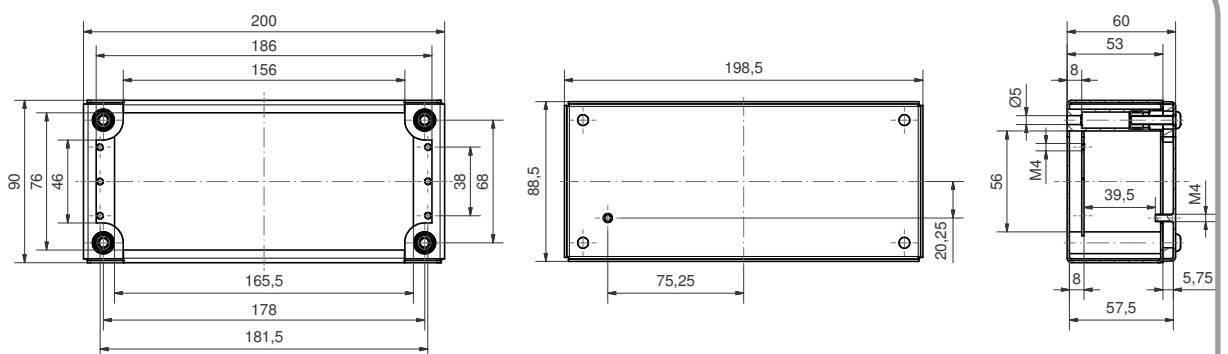
IC 090



IC 092



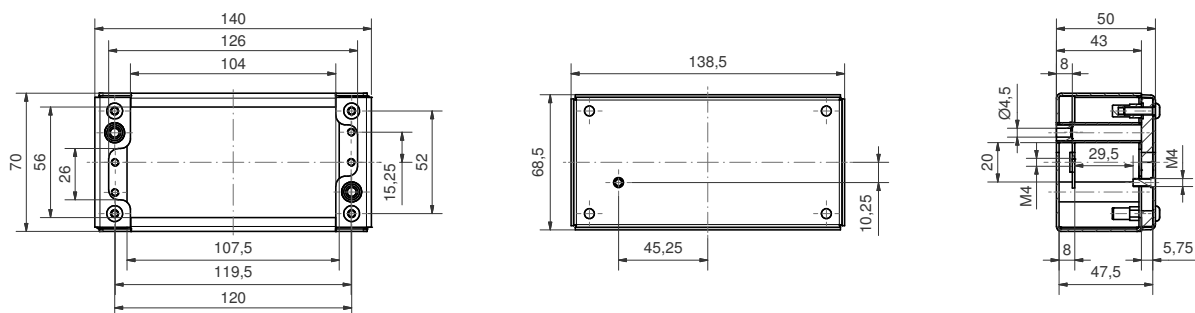
IC 093



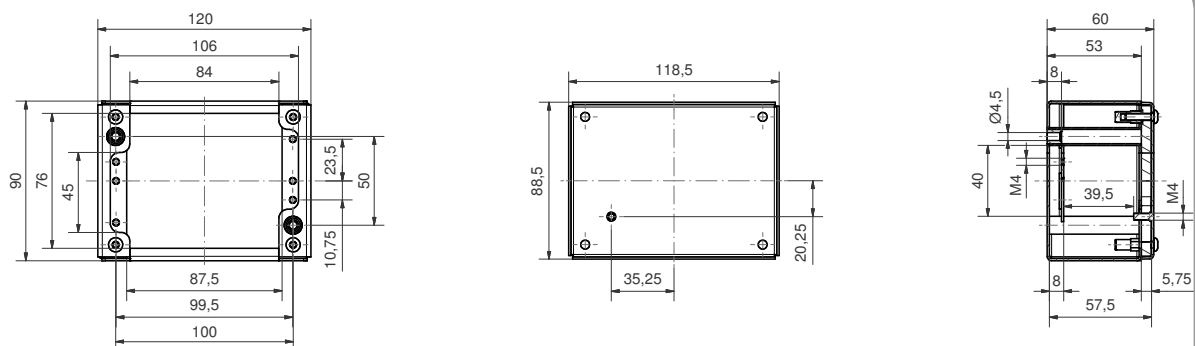
ROLEC Attachment and mounting dimensions

inoCASE A4 / inoCASEmini A4

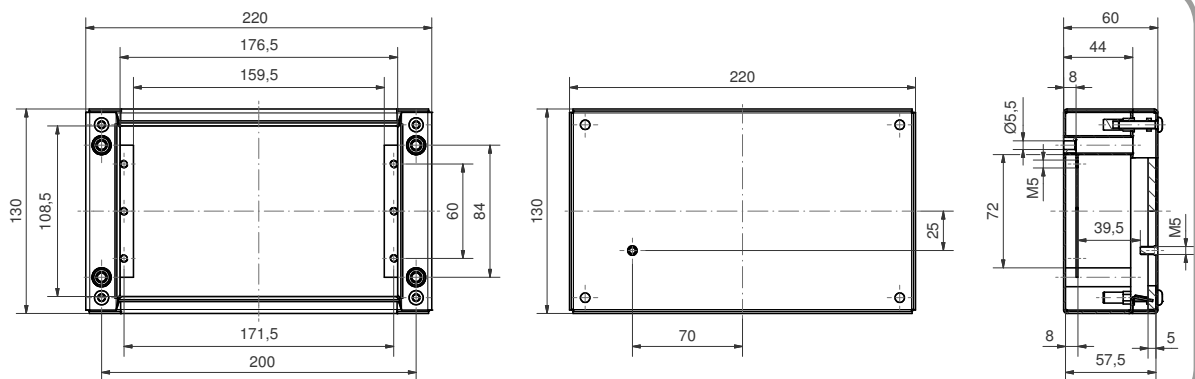
ICC 072



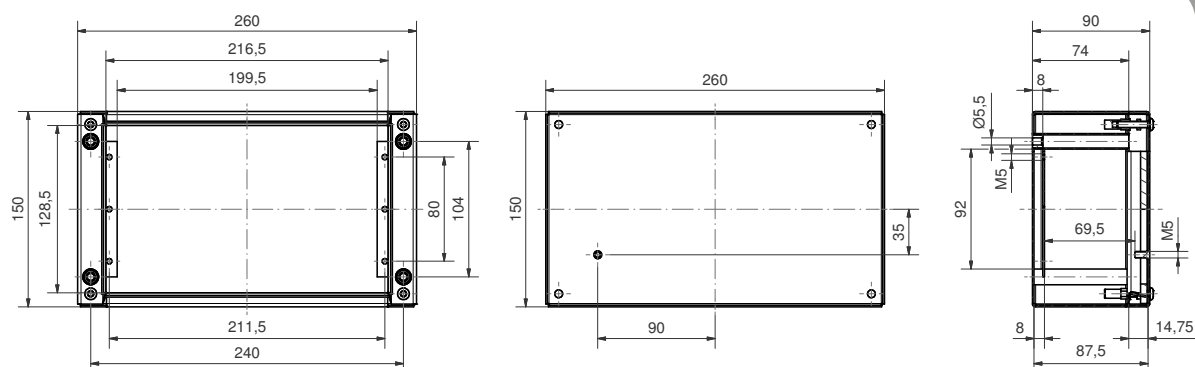
ICC 090



ICC 132



ICC 152





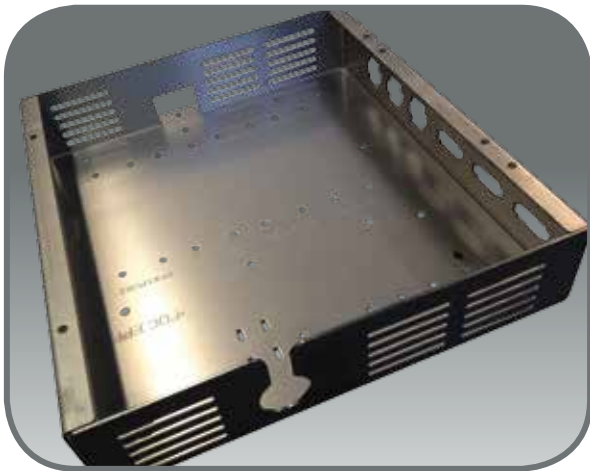
Our *passion* is enclosures.

ROLEC

For special requirements.

Special enclosures

We also supply customer-specific enclosure forms, versions and dimensions in accordance with your requirements in stainless steel.



ROLEC special enclosures
Stainless steel enclosure special solution



ROLEC special enclosures
Stainless steel enclosure distribution box (special solution)



Our *passion* is enclosures.

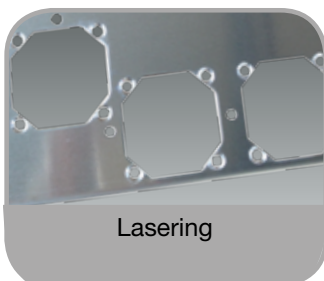


domino TheLASER Prima Power

- Large processing area
- Rapid production
- High flexibility
- 5-side processing

Lasering. Engraving. Painting...

Processing example of an enclosure. The individual alignment was rapidly and effectively completed by the laser centre. The principle is simple: We design our enclosures in accordance with your specifications, ready for immediate integration into your work flow.



Lasering



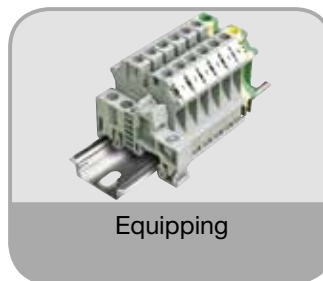
Membrane keypads



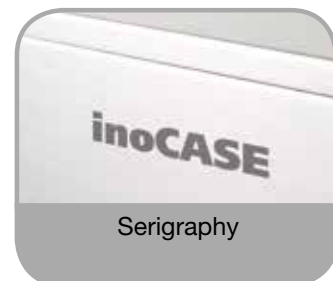
Engraving



Special coating



Equipping



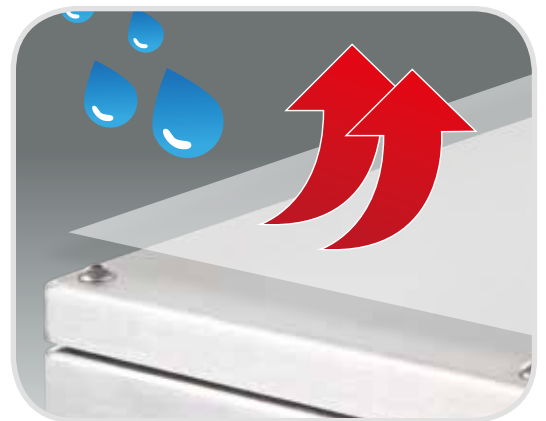
Serigraphy

ROLEC General technical information: Chemical resistance of rustproof stainless steels A2 and A4.



The resistance characteristics may change in practice; the effect of pure agents is rare, admixtures often strengthen or weaken the surface attack. Likewise, residues on the enclosure can also affect the conditions. The most assured way is to carry out testing under application conditions.

We are therefore unable to provide any guarantee in relation to this information.



Chemical resistance of enclosure materials.

Agents	Level of resistance:	
	A2	A4
Acetic acid, cold	1	1
Acetone, all conc.	1	1
Alum 10%, cold	1	1
Alum saturated solution, boiling	2	1
Aluminium acetate	1	1
Aluminium sulphate 10%, cold	1	1
Aluminium sulphate, saturated, cold	2	1
Ammonia solution	1	1
Ammonium carbonate	1	1
Ammonium nitrate	1	1
Ammonium sulphate, cold	1	1
Ammonium sulphite	1	1
Aniline	1	1
Beer	1	1
Benzene	1	1
Benzoic acid	1	1
Benzol	1	1
Boric acid	1	1
Butyric acetate	1	1
Calcium bisulphite, boiling	3	1
Calcium bisulphite, cold	1	1
Calcium hydroxide 10-50%, cold	1	1
Calcium nitrate	1	1
Camphor	1	1
Carbon dioxide	1	1
Carbon disulphide	1	1
Carbon tetrachloride, anhydrous	1	1
Chlorine, dry	1	1
Chloroform, anhydrous	1	1
Chromic acid 10%, boiling	3	2
Chromic acid 10%, cold	1	1
Citric acid, 50%, boiling	4	1
Citric acid, saturated, cold	1	1
Copper acetate	1	1
Copper arsenite	1	1
Copper nitrate	1	1
Copper sulphate	1	1
Creosote	1	1
Developer (photo)	1	1
Ethyl acetate	1	1
Ethyl alcohol, all conc.	1	1
Ethyl ether, boiling	1	1
Fatty acids, 150°C	1	1
Formalin	1	1
Formic acid, cold	1	1
Fruit juices	2	1
Glycerine	1	1
Hydrochloric acid	1	1
Hydrogen peroxide	1	1
Hydrogen sulphide	1	1
Iron nitrate	1	1
Iron sulphate	1	1
Lactic acid, all conc., boiling	3	2
Lactic acid, cold	1	1

Agents	Level of resistance:	
	A2	A4
Latex	1	1
Lime milk	1	1
Linseed oil	1	1
Liquid gases (propane, butane)	1	1
Magnesium sulphate	1	1
Maleic acid	1	1
Mercury	1	1
Mercury amalgam	1	1
Mercury nitrate	1	1
Methyl alcohol	1	1
Molasses	1	1
Nickel sulphate	1	1
Nitric acid up to 60%, cold	1	1
Nitrous acid	2	1
Oils (lubricant and vegetable oils)	1	1
Oxalic acid, 5%, cold	1	1
Phenol, boiling	2	1
Phosphoric acid up to 70%, cold	1	1
Potash	1	1
Potassium bichromate 25%	1	1
Potassium bichromate 25%	1	1
Potassium bitartrate, cold	1	1
Potassium bitartrate, cold	1	1
Potassium cyan	1	1
Potassium nitrate	1	1
Potassium permanganate	1	1
Potassium sulphate	1	1
Salicylic acid	1	1
Soap	1	1
Sodium aluminate	1	1
Sodium bisulphate, boiling	1	1
Sodium bisulphide, boiling	1	1
Sodium carbonate (soda)	1	1
Sodium hydroxide, cold	1	1
Sodium nitrate	1	1
Sodium perchlorate	1	1
Sodium silicate	1	1
Sodium sulphate	1	1
Sodium sulphate	1	1
Sodium sulphide	1	1
Sodium sulphite	1	1
Sugar solution	1	1
Sulphur (melted)	1	1
Sulphur dioxide	1	1
Sulphur, anhydrous	1	1
Sulphuric acid, saturated, 20°C	1	1
Tannic acid	1	1
Tar	1	1
Tartaric acid	1	1
Trichloroethylene	1	1
Viscose	1	1
Waste water without sulphuric acid	1	1
Wine	1	1
Zinc sulphate	1	1

1 = resistant 2 = conditionally resistant 3 = little resistant 4 = non-resistant



Our *passion* is enclosures.

ROLEC®. **Simply better.**

Trend-setting with high quality enclosures
for electro-technology and industrial electronics.

Just in time. Ready for installation.

- Lasered.
- Engraved
- Printed.
- Special coating.
- Equipped.



ROLEC
Gehäuse-Systeme GmbH
Kreuzbreite 2
31737 Rinteln
Fon +49 (0) 57 51/ 40 03-0
Fax +49 (0) 57 51/ 40 03-50
info@rolec.de
www.rolec.de

