



Our *passion* is enclosures.

**ROLEC** Milestones in enclosure technology.

# INNOVATION



**ROLEC®. Simply better.**

## aluDISC

Round industrial electronics enclosure.  
Where round shapes are advantageous.



Scan and find out more



### Conventional enclosures



### Advantages of aluDISC

- Fastening with closed lids
- Exceptional design
- Design covers for assembly level

**ROLEC®. Simply better.**



Our *passion* is enclosures.

## aluPLUS

Unique ROLEC technology.  
In the dimensions of conventional aluminium enclosures.



Scan and find out more

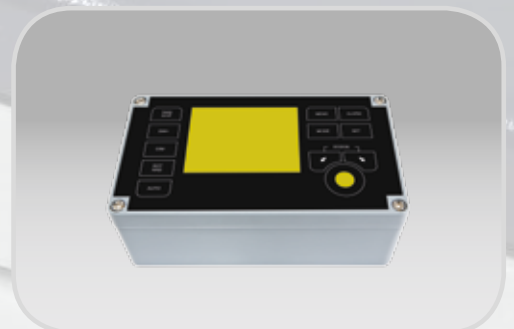


### Advantages of aluPLUS

- Fastening with closed lids
- Compatible with standard enclosures
- Design covers for assembly level

[www.rolec.de](http://www.rolec.de)

### Conventional enclosures



## aluCLIC

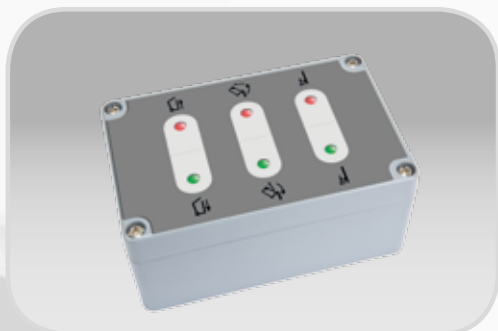
Click on instead of screw on.  
When time is money.



Scan and find out more



### Conventional enclosures



### Advantages of aluCLIC

- Rapid changing through latching
- No lid screws
- Screwed on rear side

**ROLEG®. Simply better.**

Our *passion* is enclosures.

## aluSMART

Industrial enclosure in a smartphone design.  
Minimalistic design for uncompromising  
frontal configuration.



Scan and find out more



### Advantages of aluSMART

- Unique smartphone design
- Fastening on base plate
- Unlimited frontal

[www.rolec.de](http://www.rolec.de)

### Conventional enclosures



## aluCASE

The evolution  
From distributor to electronics enclosure



Scan and find out more



### Conventional enclosures



### Advantages of aluCASE

- Fastening with closed lids
- Design covers for fastening level
- Recess in the lid for membrane keypad

**ROLEG®. Simply better.**

Our *passion* is enclosures.

## **mobilCASE**

Industrial electronics hand-held enclosure  
For mobile controls



Scan and find out more



### **Advantages of mobilCASE**

- Three profile sizes
- Variable lengths
- Integrated power supply

[www.rolec.de](http://www.rolec.de)

### **Conventional enclosures**



## inoCASE

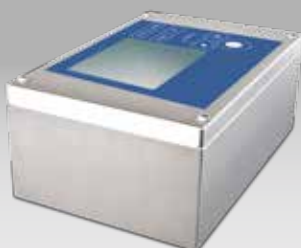
ROLEC technology in stainless steel  
The first industrial electronics enclosure from rustproof steel



Scan and find out more



### Conventional enclosures



### Advantages of inoCASE

- Separate fastening channels
- The first industrial electronics VA enclosure
- Available in V2A (4301) and V4A (4404)

**ROLEC®. Simply better.**



Our *passion* is enclosures.

## starCASE

ROLEC aluCASE technology in plastic  
The benchmark for sophisticated enclosures from thermoplastic



Scan and find out more



## Conventional enclosures



## Advantages of starCASE

- Fastening with closed lid
- Design covers for fastening level
- Recess for membrane keypad

[www.rolec.de](http://www.rolec.de)

## aluDISPLAY

Ultra-flat aesthetic control and display enclosure  
Three profile sizes - variable lengths



Scan and find out more



### Conventional enclosures



### Advantages of aluDISPLAY

- Ultra-flat
- Three profile sizes
- Variable lengths

**ROLEG®. Simply better.**

Our *passion* is enclosures.

## commandCASE

Small Command enclosure from die cast aluminium  
Innovative design, in CASE technology



Scan and find out more



### Advantages of commandCASE

- Ergonomic, elegant and economical
- Integrated design handle
- 3 closure types

[www.rolec.de](http://www.rolec.de)

### Conventional enclosures



## technoPLUS

Stable, robust industrial enclosure,  
also for outdoors  
aluPLUS technology in thermoplastic



Scan and find out more



### Conventional enclosures



### Advantages of technoPLUS

- Particularly well suited for outdoor installation
- Fastening with closed lids
- Highly robust

**ROLEG®. Simply better.**

Our *passion* is enclosures.

## profiPLUS

ROLEC suspension system for enclosures and devices  
Matches with the progressive design of modern machinery



Scan and find out more



### Advantages of profiPLUS

- New elegant design
- Easy to install
- Patented adjustment of the pivoting range

[www.rolec.de](http://www.rolec.de)

### Conventional suspension systems



# ROLEC Enclosures.

Ready for use „Just in time.“

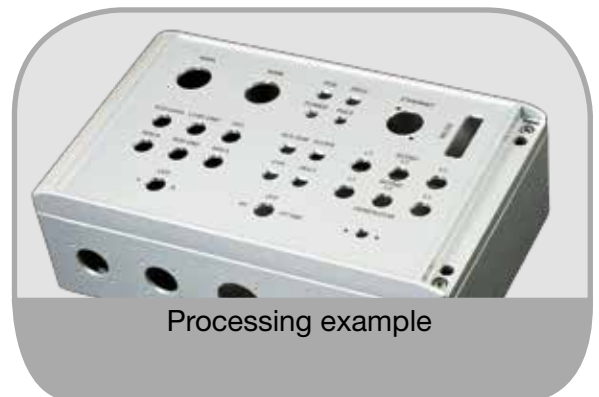
## Electronics and terminal enclosures are supplied ready for installation.

The user need only install the electrical and electronic components and attach to the machine - ROLEC takes care of everything else.

Enclosures are painted in standard colours or in accordance with our customers' wishes. On request we deliver enclosures ready for installation with membrane keypads, terminals and cable glands.

## Drilling. Milling. Engraving... in accordance with your specifications.

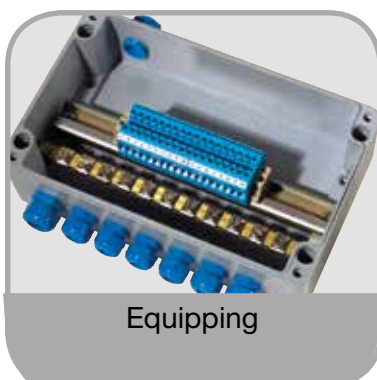
Processing example of an enclosure. The principle is simple: We design our enclosure in accordance with your specifications, ready for immediate integration into your work flow.



# ROLEC

## Finished means finished.

- Drilling
- Milling
- Engraving
- Powder coating
- Lasering
- Serigraphy
- Equipping
- Front plates
- Membrane keypads
- Delivery





Our *passion* is enclosures.

# ROLEC Enclosures for industrial electronics. Unique in technology and design.



ROLEC  
Gehäuse-Systeme GmbH  
Kreuzbreite 2  
31737 Rinteln  
Fon +49 (0) 57 51/ 40 03-0  
Fax +49 (0) 57 51/ 40 03-50  
info@rolec.de  
www.rolec.de  
www.rolec-mobile.de  
MD\_2014-02\_999.00B.101 GB

