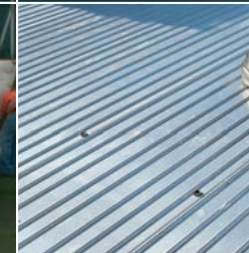
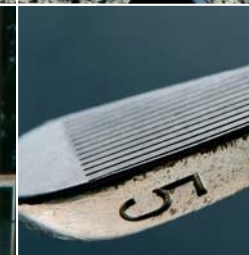
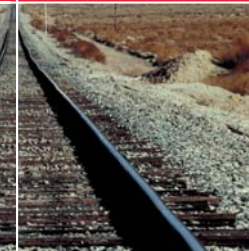
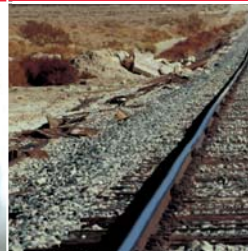


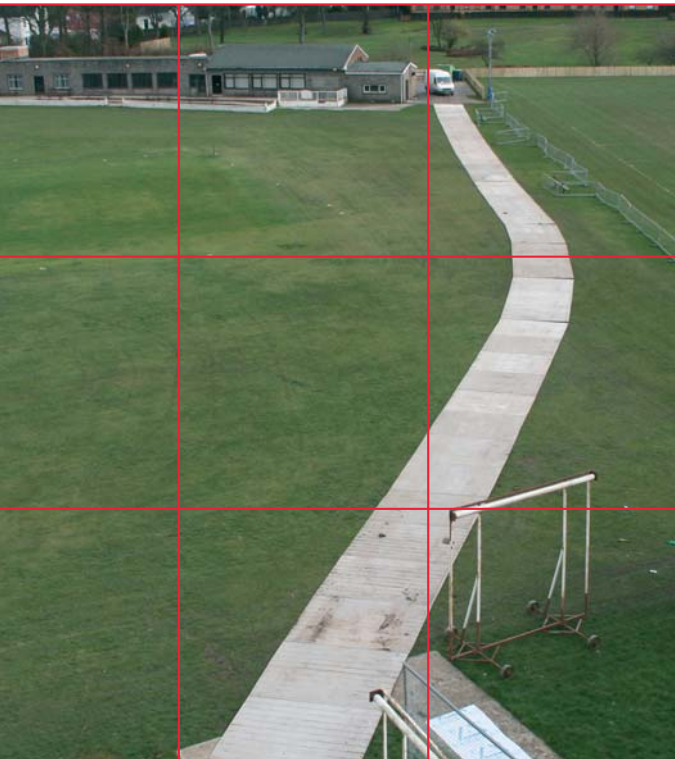
# Portable roadway systems.



***FIELDTRACK LTD***

## Fieldtrack Portable Roadway Specifications:

Heavy Duty Aluminium  
Grade 6082 T6  
Dimensions: 3000mm x 2500mm  
Weight: 250kg



Portable roadway systems have, over the years, become increasingly popular and more widely available in a variety of forms and the Fieldtrack aluminium panel system offer a great blend of strength and functionality that enables a single panel design to be used for pedestrians and also light and heavy duty vehicular traffic.

In developing the Fieldtrack panel system, we have combined the structural strengths demanded of a heavy duty grade product and added a pedestrian-friendly upper surface that compromises neither user, nor product, providing traction to rubber-tired vehicles, sure-footed pedestrian access and solid ground protection.

To minimise the risk of punctures from protruding objects, the Fieldtrack panel incorporates a recessed profile which houses the fixing bolts. In keeping the recess to a minimum quantity, there is less deviation from the continuous upper surface resulting in a safer, pedestrian-friendly, product.

Each Fieldtrack panel measures 3m wide x 2.5m long, ensuring that most road-going vehicles can travel along a single width temporary roadway. For larger vehicles, with a carriage width of more than 2.75m we recommend installing a double width roadway to accommodate the wider wheel configuration and heavier loads that are usually associated with such vehicles.



# Portable roadway systems

Panels can be installed in multiple layers and widths where particularly soft ground or unusually heavy loads are encountered. This will offer greater protection against damage to the underlying ground and prevent unnecessary risks.

Supplying access solutions across many industry sectors, the Fieldtrack panel system is just as likely to be found at a major sporting event as it is crossing the green fields of our countryside between overhead power-line pylons or to a new mobile telecommunications mast.

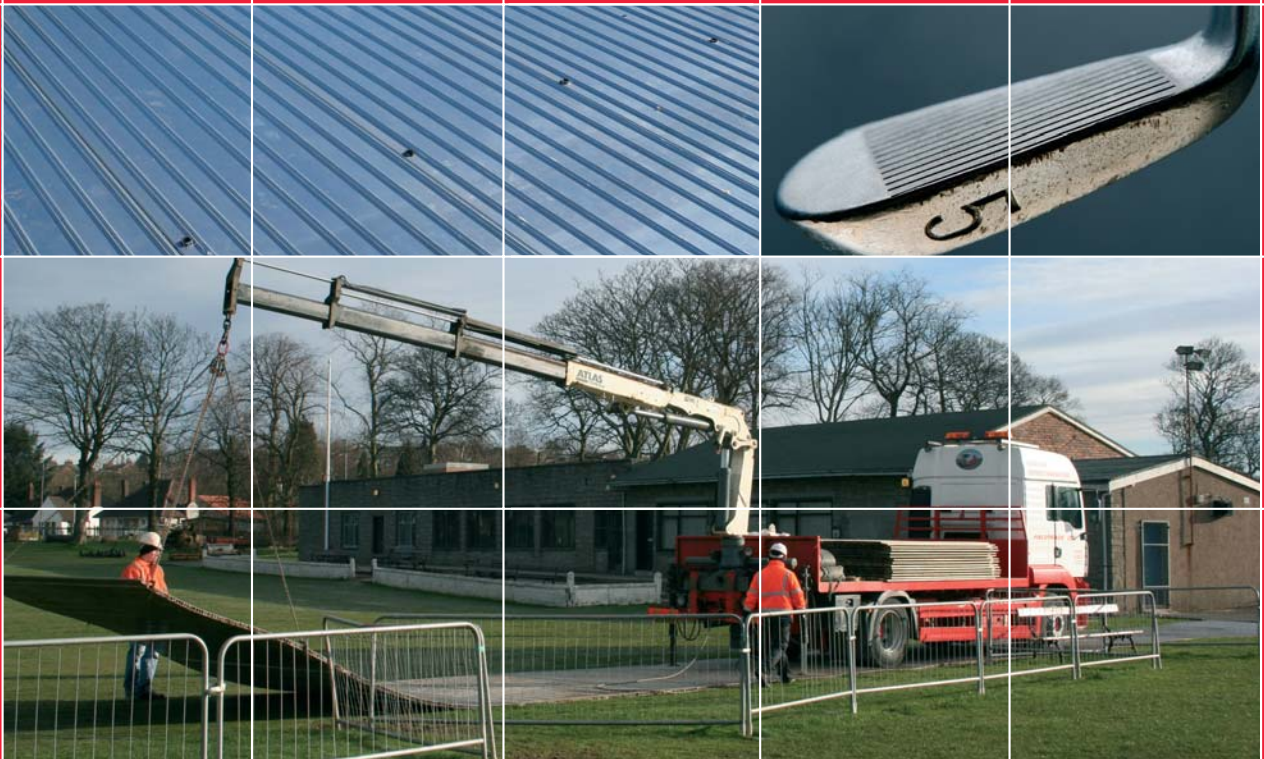


Whether you want to support a large capacity mobile crane or provide visitors to your event with a solid and reliable means of access and egress, the Fieldtrack panel system can deliver all the support you require.

Call us now to discuss your specific requirements on 01555 812812.

**FIELDTRACK LTD**

# Portable roadway systems.



**Fieldtrack Limited**, Manse Road, Forth, Lanark ML11 8AN

Head office: Tel: 01555 812 812 Fax: 01555 812 888 email: [info@fieldtrackltd.co.uk](mailto:info@fieldtrackltd.co.uk)

***FIELDTRACK LTD***

[www.fieldtrackltd.co.uk](http://www.fieldtrackltd.co.uk)