

PLAN ON GUIDES

Steel support bracket

Galvanised steel hood

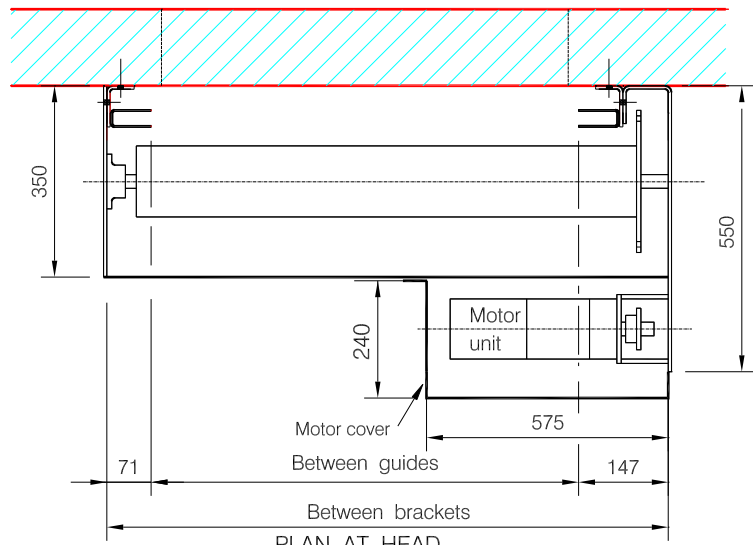
Electric operator with emergency handchain operation. Controlled rate of descent in the event of emergency.

Galvanised 75mm curved steel laths

Steel guide assembly

Galvanised steel bottom rail

Galvanised steel sheet metal coil casing and steel plate assembly



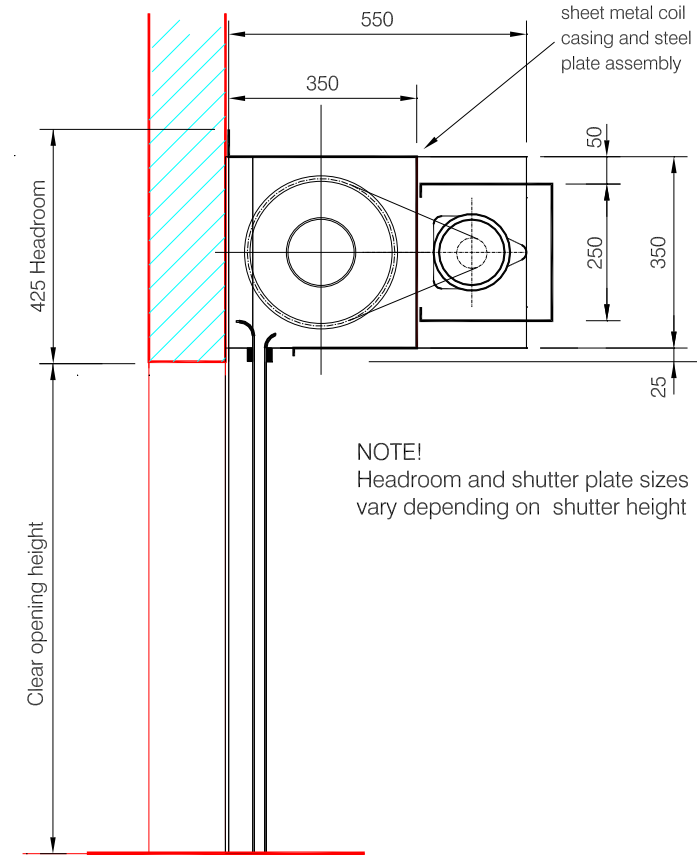
PLAN AT HEAD

3ph. 380/440 V Electric operator by Avon Industrial Doors Ltd Operator complete with travel limits emergency handchain operation and auto solenoid release unit.

Site wiring and commissioning to a live fused isolator (by others) sited within 1 metre of opening on the motor side to be carried out by Avon Industrial Doors Ltd Connection of the solenoid release unit to the alarm system to be undertaken by others.

DESIGN NOTES!

The structure supporting the shutter must be a fire - resistant separating element (to BS 476: Part 20,21,22:1987) having a fire resistance greater or equal to that required of the shutter. The structure must also be capable of supporting the shutter for the required fire resistance period without compromising the fire performance of the shutter.



NOTE!
Headroom and shutter plate sizes vary depending on shutter height

SECTION

AVON INDUSTRIAL DOORS LTD

TITLE: 1 HOUR ELECTRIC FIRE SHUTTER
INBOARD MOTOR - RIGHT HAND

DRAWN: D.J.J.

DRG. No.

DATE: 05 / 03 / 2007

AV 1010