

# A.M.P.-Rose



## 'Pakasnax' Multipack wrapping Machine



# A.M.P.-Rose

Your partner in the confectionery industry



## 'Pakasnax' Multipack wrapping Machine



The Pakasnax machine is a horizontal form fill and seal machine, which has been specifically designed for multi-packing products such as bags of Crisps, Popcorn, Snacks etc.

Packing these products in the multi-pack format presents several challenges, the main ones being retaining the collation during the wrapping process, and keeping the cut-off of the wrapping material to an absolute minimum.

Thanks to the machine design these objectives are achieved, and savings are therefore made by using less wrapping material, and as a result of minimal downtime and by the elimination of waste.

The specific advantages are as follows;  
The film folding box has been designed specifically to control the collation of primary products during the transfer from the infeed into the longitudinal sealing area.

The efficient sealing of the pack's longitudinal seam is achieved by the use of sufficient heat sealing rollers to correctly transfer the heat to the wrapping material without stretching it. For this reason the machine is equipped with a first pair of un-heated driving rollers, plus two further heated pairs of rollers.

Radial adjustments can be made to the first pair of film rollers, thereby ensuring that the finished pack is always tight.

The standard machine is fitted with a no-pack-no-paper sensor. Sensors are also fitted to detect if the collation of products is out of position. This ensures that the end crimp jaws do not destroy the primary bags. If the sensor is activated it will instruct the end crimp jaws to remain in the open position until a correctly positioned collation has been established. Those packs with the collation out of position will pass through the end crimp without being sealed or cut off, and will be rejected by the subsequent check weigher. These rejected bags can then be successfully re-cycled.

The end crimp unit is extremely robust, boasting 60mm diameter shafts on 250mm centres. In addition to this, the film holders can take reels of up to 800mm in width, which allows extremely large packs to be wrapped. The end crimp movement can be adjusted via the operator touch screen, ensuring that the sealing and cut-off is reduced to a minimum.

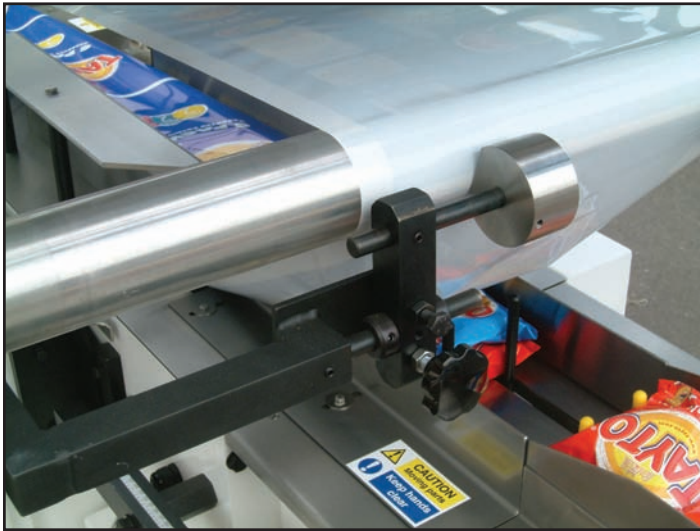
Automatic reel splicing is offered as an option and can give substantial savings in time as well as wrapping material. This feature is particularly beneficial when automatic feeding is used.

A pack-tamping unit is also offered as an optional extra. This unit is fitted on the infeed immediately prior to the folding box. This unit ensures that the collation is gently 'tamped' from the top to ensure a smooth passage through the folding box. This unit is also beneficial when an automatic feeder is fitted.

Another option is a hole punch unit, which can punch either a complete hole or a partial hole (butterfly). This allows the exhaustion of air from the multipack prior to case packing.

Feeding systems incorporating robotic loading can be supplied to make the loading and packaging process completely automatic.

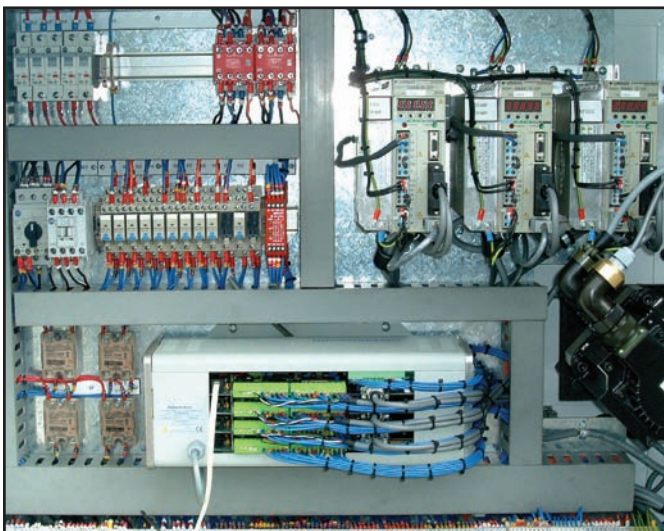
## Machine Speed



The typical production capacity for the machine is 40-50 bags/minute, using manual or robotic feeding. The mechanical speed of the machine is up to 100 bags/minute.

## Machine Specification

- Three axis servo drive system; one drive for the machine infeed, one for the seam seal unit and one for the cross seal unit
- Colour interface screen which is both intuitive and simple to use
- Password protected pages for engineering and machine performance
- Simple size changes are achieved by selecting the appropriate product program from the interface screen
- Temperature controllers for seam seal and cross seal heaters
- Easy access to the drive system, electrical controls and pneumatic system for maintenance
- Fully interlocked guarding and safety features to meet latest standards
- In-line infeed system for manual or automatic loading of the individual bags. The length of the infeed is made to suit the specific application
- Easily removable side covers at the infeed area to allow access for cleaning and maintenance
- Seam seal unit with three sets of sealing rollers - first pair cold, second and third heated, plus one pair of fin turnover rollers
- Pack tightness adjustment on first set of seam seal rollers
- Robust cross sealing unit which can be fitted with various sealing jaw designs
- Print registration system
- Double wrapping material reel holder
- Adjustable machine feet



Advanced 3-axis servo drive system

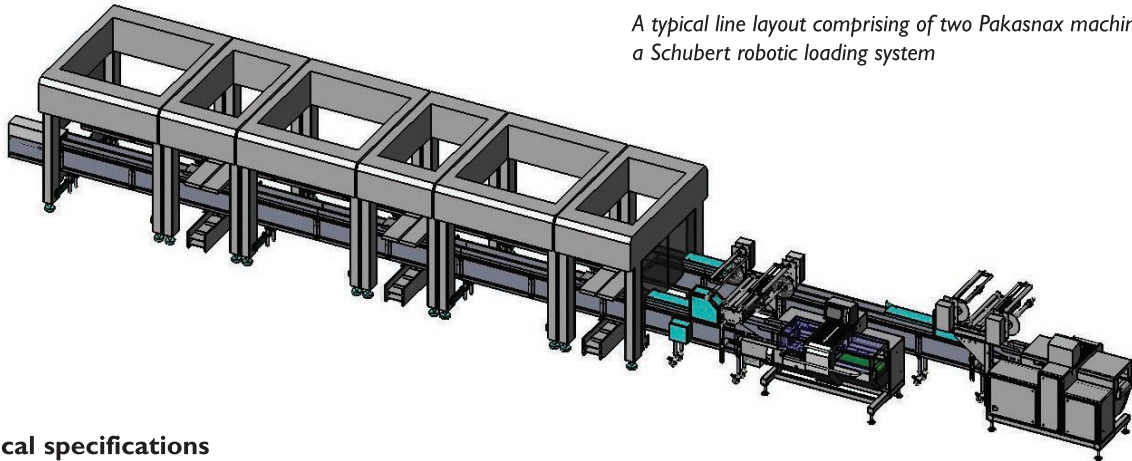


The infeed conveyor can be manually or automatically loaded



### Technical specifications

- Quickly detachable infeed: This feature enables the machine infeed to be quickly removed and replaced by a second infeed which is ready to run an alternative pack format
- Pack tamping unit
- Automatic material splicing unit
- Automatic seam seal release: with this option the heated seam seal rollers automatically open when the machine stops
- Hole punch for removal of air inside pack
- Transverse pattern cross seal jaws (Zig-zag)
- Special cross seal jaws to produce pack header with 'Euroslot' or other hanging facility
- Serrated cut cross-seal knife
- Coding system



A typical line layout comprising of two Pakasnax machines and a Schubert robotic loading system

### Technical specifications

<b>Pack size range:</b>	Length:	200 - 800mm
	Width:	100 - 300mm
	Height:	5 - 175mm
<b>Maximum reel width:</b>	800mm	
<b>Reel dimensions:</b>	Max. reel dia. 400mm. Core dia. 76mm	
<b>Power consumption:</b>	6kw	
<b>Compressed air:</b>	6 bar max.	
<b>Nett weight:</b>	1500kgs	



## A.M.P.-Rose

Represented by;

Somerby Way Heapham Road Industrial Estate  
 Gainsborough Lincs DN21 1RZ England.  
 Tel: +44 (0) 1427 611969  
 Fax: +44 (0) 1427 616854  
 e-mail: sales@amp-rose.com  
 website: www.amp-rose.com