

radicon 

with you at every turn



A close-up photograph of a worker in a high-visibility, light-colored jacket with reflective stripes. The worker is focused on a large, complex industrial gearbox, with their hands positioned on a gear assembly. The scene is lit with warm, golden light, creating a professional and industrial atmosphere. The background is slightly blurred, emphasizing the worker and the machinery.

# SERVICE AND REPAIR

Radicon service engineers are ready and waiting 24 hours a day, 365 days a year, to provide the following services anytime, anywhere in the world.

On-Site Services

Repairs, Overhauls & Upgrades

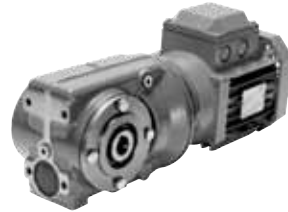
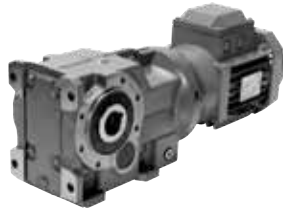
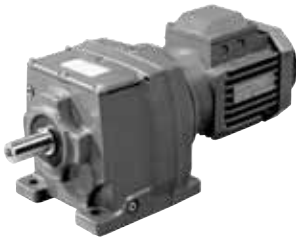
Drop in Replacement Gearboxes

Asset Management

Our dedicated service and repair engineers have the necessary expertise and experience to provide simple repair services through to complex overhaul projects in any industry on any brand of gearbox.

By working in partnership with you the customer our aim is to not only repair but to identify the root cause of your production problems, and work on upgrading and improving your process eliminating downtime and lowering your costs

**24/7 Call Out: 07808 093 048**



### SERIES M IN LINE HELICAL GEARED MOTORS AND REDUCERS

### SERIES K RIGHT ANGLE HELICAL BEVEL HELICAL GEARED MOTORS AND REDUCERS

### SERIES C RIGHT ANGLE HELICAL WORM GEARED MOTORS AND REDUCERS

### SERIES F PARALLEL SHAFT MOUNT HELICAL GEARED MOTORS AND REDUCERS

Proven design geared motors with dry connection between motor and gearbox for easy removal of the motor.

Key dimensions throughout the range are interchangeable with many manufacturers allowing easy installation into existing applications.

Available with Drywell System for maximum protection against oil contamination on vertical shaft mixing and aerating applications.

Available with market leader KIBO tapered bushing system to allow trouble free removal of hollow shaft and gearboxes.

**Unit Sizes:**  
01, 02, 03, 04, 05, 06, 07, 08, 09, 10, 13, and 14  
**Input Power:**  
Up to 90kW  
**Output Torque:**  
Up to 11,000Nm  
**Gear Ratios:**  
3.6/1 to 58/1 in two stage, upto 16200/1 in combined form  
**Motor Sizes:**  
IEC Frames from 63 to 280

**Unit Sizes:**  
03, 04, 05, 06, 07, 08, 09, 10, and 12  
**Input Power:**  
Up to 90kW  
**Output Torque:**  
Up to 12,300Nm  
**Gear Ratios:**  
8.0/1 to 160/1 in three stage, up to 35000/1 in combined form  
**Motor Sizes:**  
IEC Frames from 63 to 280

**Unit Sizes:**  
03, 04, 05, 06, 07, 08, 09, and 10  
**Input Power:**  
Up to 45kW  
**Output Torque:**  
Up to 10,000Nm  
**Gear Ratios:**  
8.0/1 to 250/1 in two stage, up to 60000/1 in combined form  
**Motor Sizes:**  
IEC Frames from 63 to 225

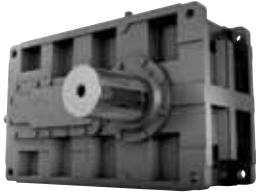
**Unit Sizes:**  
02, 03, 04, 05, 06, 07, 08, 09, 10, 11 and 12  
**Input Power:**  
Up to 110 kw  
**Output Torque:**  
Up to 16,500 Nm  
**Gear Ratios:**  
5.0/1 to 100/1 in 2 stage, up to 5600/1 in combined form  
**Hollow shaft:**  
25 mm to 100 mm  
**Motor Sizes:**  
IEC Frames from 63 to 225

## THROUGH LIFE COSTS

Whether you use drive and linear motion systems in your plant production line, or are a machine builder wishing to offer your customer the most reliable machine possible, we recognise the importance of minimising through-life cost.

A combination of rugged reliability, providing maximum life span and userfriendly design, enabling easy maintenance, ensures that the products we offer are easy to live with, giving you peace of mind and allowing you to focus on the important areas of your day to day business.





### SERIES G HELICAL PARALLEL SHAFT AND BEVEL HELICAL RIGHT ANGLE DRIVE GEAR UNITS

Incorporating 3 stage high integrity sealing, split gear case design for easy maintenance.

### SERIES J HELICAL SHAFT MOUNT SPEED REDUCERS

Available with unique KIBO® tapered bushing system to allow trouble free removal of hollow shaft gearboxes.

### SERIES A WORM GEARBOXES

The Series A range of units can be mounted in the worm under, worm over and outputshaft vertical mounting positions and provide a choice of shaft arrangements.

### SERIES BD SCREWJACKS

Supplied as individual products or engineered into complete linear motion packages, Suitable for numerous applications including linear motion, positioning, pressing and load adjustment.

**Unit Sizes:**  
14, 15, 16, 17, 18, 19, 21, 22  
**Input Power:**  
Up to 1,500kW  
**Output Torque:**  
Up to 162,000Nm  
**Gear Ratios:**  
6.3/1 to 315/1/1 in multistage, up to 70000/1 in combined form  
**Output Shaft:**  
Up to 240mm diameter  
**Motor Sizes:**  
IEC Frames from 200 to 315

**Unit Sizes:**  
11/12, 21/22, 31/32, 51/52, 71/72, 100, 110, 125, 140, 160, 190  
**Input Power:**  
Up to 618kW  
**Output Torque:**  
Up to 57,800Nm  
**Gear Ratios:**  
5:1 to 20:1  
**Hollow shaft:**  
35 to 190mm  
**Motor Sizes:**  
IEC Frames B3 from 90 to 200

**Unit Sizes:**  
410, 510, 610, 730, 860, 1002, 1252, 1602, 2002, 10, 12, 14\*  
\*Larger and special units available upon request.  
**Input Power:**  
Up to 718kW  
**Output Torque:**  
Up to 104,000Nm  
**Gear Ratios:**  
from 5:1 to 70:1 single reduction and 4900/1 in double reduction format  
**Output Shaft:**  
190mm

**Unit Sizes:**  
27, 40, 58, 66, 86, 100, 125, 200  
**Load Capacity:**  
1 Kg to 100 tonnes  
**Linear Speed:**  
up to 5m/min Stainless Steel construction available

## CUSTOMISED & SYSTEM SOLUTIONS

We recognise that a standard off the shelf product is not always the best solution for our customers needs. The design principles which we incorporate into our product range enable a high degree of product flexibility, enabling many alternative solutions to be offered.

Our experienced sales and engineering teams are able to provide both complete drive and linear motion system packages as well as a full customisation service, providing a specific product modification to meet your exact needs.



## ROLOID GEAR PUMPS

## SERIES X COUPLINGS

## WEG ELECTRIC MOTORS

## CONDITION MONITORING

Suitable for pumping a wide variety of liquids which have a lubricating property, in applications such as Engines, Compressors, Gearboxes, Rolling Mills, Machine Tools, Process Plant, Pumping Sets and Turbines. HST version specifically designed for screw compressor applications.

**Unit Sizes:**  
9, 7, 6, 5, 4, 3, 2.5, 2, 1.5  
**Flow Rate:**  
up to 2500 litres/min

A comprehensive range of shaft couplings, incorporating, gear type, pin and bush type, Nylicon and mechanical torque limiting type, allowing both parallel offset and angular misalignment, virtually maintenance free, offering excellent durability and machinery protection.

**Unit Sizes:**  
Accommodating shaft size up to 540mm dia.  
**Load Capacity:**  
Up to 1,100,000Nm

\*\* Not available Atex certified

As a preferred supply partner with Weg, Radicon now supply electric motors to complete the power transmission package. The range covers standard IEC motors from stock to medium and high voltage bespoke engineered motors. WEG's specialism in custom built medium and high voltage motors for drop in replacements are an ideal fit for the custom and drop in replacement range of gearboxes Radicon supply.

**W22 IEC Motors**  
**Unit Frame Sizes:**  
63 – 355\*  
\*Medium/High voltage available on request.  
**Unit Powers:**  
0.12kW – 500kW

In conjunction with Radicon Service & Repair Partner PCMS, a full range of condition monitoring services are now available to complement the product range.

**Services include, but are not limited to:**

- Gearbox health inspections
- Remote data analysis
- Oil analysis
- Vibration analysis & balancing
- Alignment checks
- Infrared thermography
- Ultrasonic testing
- Stress wave analysis
- Preventative maintenance packages

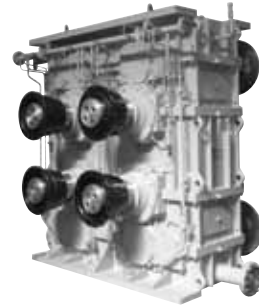
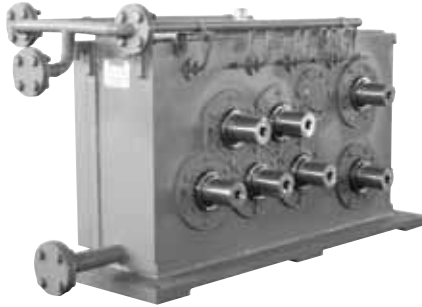
## APPLICATION EXPERTISE AT YOUR SERVICE

An unrivalled depth of customer application expertise stretching back over 150 years enables us to provide the optimum solution for your drive requirements. Our team of Application Engineers are available to review your needs, understand your problems and recommend the best possible drive or linear system solution to maximise the operation of your equipment and minimise the through life cost.

**Atex** - All our products can be supplied Atex certified on normal lead times \*\*



## DROP IN GEARBOX REPLACEMENTS



Radicon now has the capability to design, engineer and supply special gearboxes to replace any brand of gearbox whether current or obsolete with the minimum of modification and production downtime.

Utilising a wealth of experience and knowledge Radicon is able to engineer gearboxes on a 'like-for-like' basis with the option to increase power and torque whilst occupying the same footprint as the existing gearbox.

Drop in replacement gearboxes can be designed for mounting in the precise configuration of the original gearboxes, but incorporate technology that ensures they require less maintenance and are easier to maintain for whole life cost benefits.

With the ability to engineer gearboxes to the exact current gearbox specifications, the main obstacle to upgrading is eliminated as the new gearboxes occupy the exact same footprint and minimise downtime and costly plant layout modifications.

## DROP IN REPLACEMENTS

Radicon is able to offer drop in gearboxes for any brand of gearbox either current or obsolete, including, but not limited to the following brands:

**David Brown**

**Falk**

**Siemens Flender**

**Renold**

**Hansen**

**SEW**

**Santasalo**

**TGW**

## ENTRY ROLL GEARBOX



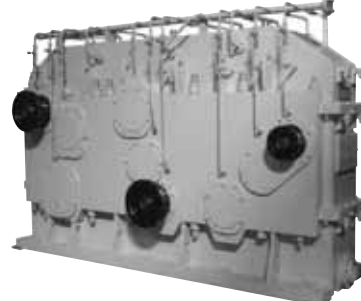
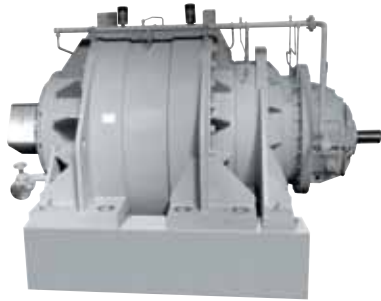
Radicon recently supplied a drop in replacement to a major UK End User for the manufacture of steel. The requirement was for an existing gearbox to be replaced without any modifications to the surrounding mounting base and equipment.

Single helical gearbox with a ratio of 1/1  
A single extension solid input shaft and double output shafts  
Transmits 17kW at a speed of 263 RPM

To ensure suitability to withstand the duty the gearbox offers a service factor of 8.24 for strength in accordance with AGMA 2001-B88 selection criteria.



## CUSTOM MANUFACTURED GEARBOXES



Radicon can offer a high quality range of custom engineered gearboxes into a wide range of industries and applications. Major investment in the business coupled with our design, engineering experience and industry expertise ensures our custom engineered gearboxes reach the highest standards of quality, reliability and durability.

Radicon's dedicated team of application engineer's work in partnership with each customer to ensure our products are the optimal solution for each individual customer, while still delivering high quality and reliable products that the Radicon business is renowned for.

## INDUSTRIES & PRODUCT RANGE

### Power Generation

- Cooling Tower Drives
- Coal Pulveriser Drives
- Air Preheater Drives

### Cement

- Mill Drives
- Retrofit Replacements

### Steel

- Coiler/Uncoiler & Pay-Off Reel Gearboxes
- Rolling Mill Drives
- Speed Changing Gearboxes

### Material Handling

- Ladle Crane Hoist Gearboxes
- Travel & Cross Travel Drives
- Heavy Duty Conveyor Drives

### Rubber & Plastics

- Banbury Mixer Drives
- Calendar Drives

### Sugar

- Planetary Gearboxes
- Sugar Mill Drives
- Dual Tandem Mill Gearboxes

## FSUO 8" Worm Gear Reducer



Radicon recently supplied a drop in replacement to Celsa Steel, a major UK manufacturer of steel products. Celsa were having reliability issues with an old Renold gearbox. The constant downtime was costing over £30,000 an hour and having major implications on productivity as the unit needs to be running 24/7.

The replacement Elecon FSUO 8" Worm Gear Reducer was a more cost effective solution than repairing the current Renold unit and was installed with minimum disruption to operation.

**"The cost-effective solution that Radicon provided has enabled us to order a similar unit to be held in storage to ensure we have no more costly production outages"**

Andy Donovan (Mechanical Engineer, Celsa Steel UK)

**Radicon** believes in engineering quality relationships with our customers that strengthen what we can achieve together. Our business and the people within our business are committed to building long lasting partnerships that are as reliable as our products and as smooth as our service.

Radicon and sister company Benzlers are now part of Elecon Engineering, Asia's largest and fastest growing gear manufacturer. This partnership means that we can offer our customers an enhanced range of standard and bespoke engineering solutions including drop in replacements, all supplied with the product quality and engineering expertise demanded from and delivered by the Radicon business.

**Radicon - with you at every turn**

benzlers   
radicon 

**Benzlers**

Denmark +45 36 34 03 00  
Finland +358 9 340 1716  
Germany +49 800-350 4000  
Italy +39 02 824 3511  
Sweden +46 42 186800  
The Netherlands +31 77 324 59 00  
[www.benzlers.com](http://www.benzlers.com)

**Radicon**

Thailand +66 3845 9044  
United Kingdom +44 (0) 1484 465 800  
USA +1 847 593 9910  
[www.radicon.com](http://www.radicon.com)